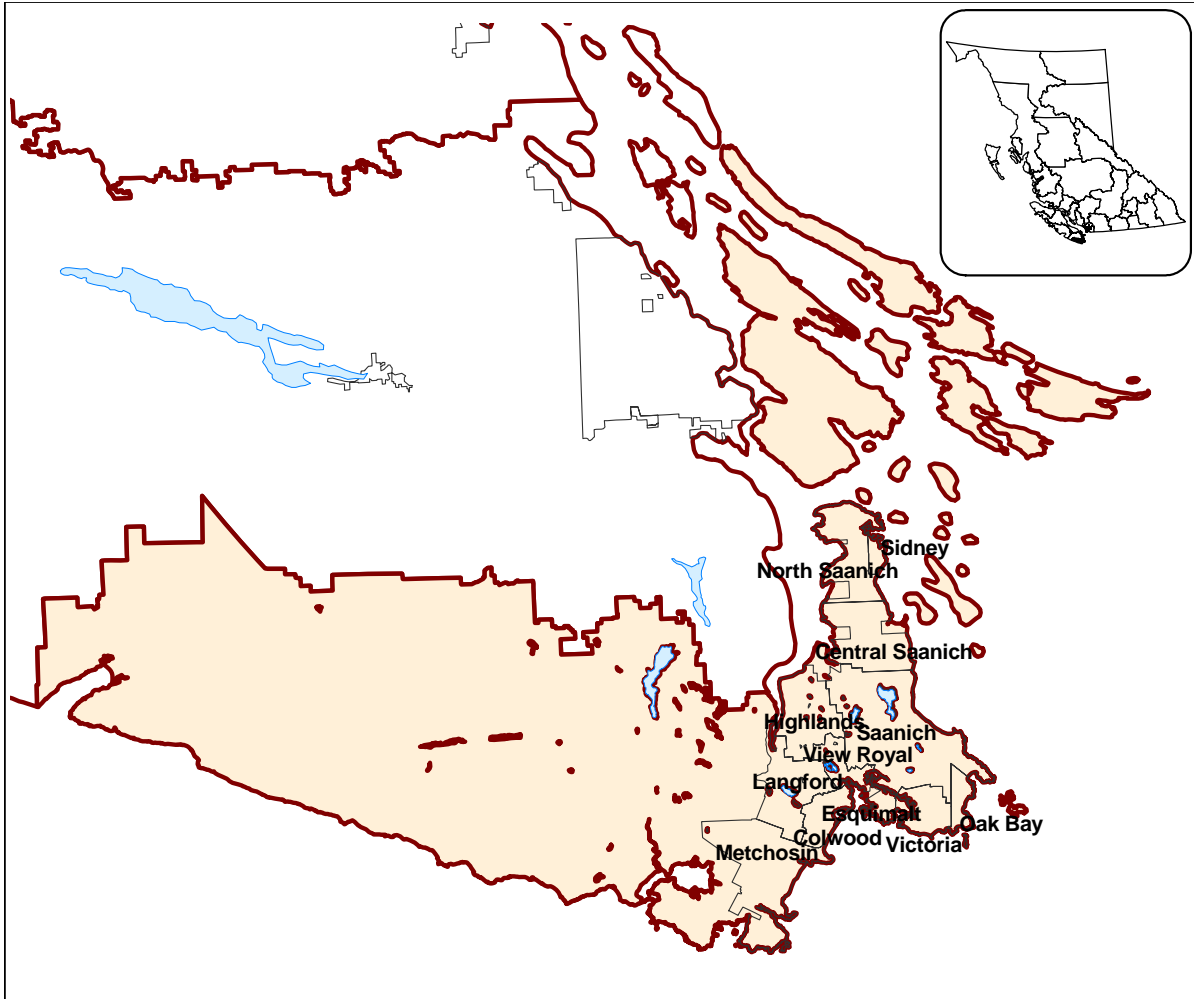


**STATISTICAL PROFILE**



	<u>2006 CENSUS POPULATION</u>		<u>LAND AREA</u>		<u>POPULATION DENSITY</u>
	<u>Number</u>	<u>% of Region</u>	<u>Sq. Km.</u>	<u>% of Region</u>	<u>Persons per Sq.Km.</u>
Saanich, DM	108,265	31.4%	103.4	4.4%	1,046.7
Victoria, C	78,057	22.6%	19.7	0.8%	3,965.5
Langford, DM	22,459	6.5%	39.6	1.7%	567.8
Oak Bay, DM	17,908	5.2%	10.4	0.4%	1,724.7
Esquimalt, DM	16,840	4.9%	7.0	0.3%	2,391.1
Central Saanich, DM	15,745	4.6%	41.4	1.8%	380.1
Colwood, C	14,687	4.3%	17.8	0.8%	826.8
Sidney, T	11,315	3.3%	5.0	0.2%	2,243.8
North Saanich, DM	10,823	3.1%	37.1	1.6%	291.4
Sooke, DM	9,704	2.8%	50.0	2.1%	194.0
View Royal, T	8,768	2.5%	14.5	0.6%	605.4
Metchosin, DM	4,795	1.4%	71.3	3.0%	67.2
Rest of Region	25,798	7.5%	1,923.7	82.2%	12.7
<b>Total Region</b>	<b>345,164</b>	<b>100.0%</b>	<b>2,341.0</b>	<b>100.0%</b>	<b>147.4</b>
Total BC	4,113,487		924,815.4		4.4
<b>Region as a % of BC</b>	<b>8.4%</b>		<b>0.3%</b>		

NOTE: BC Total Land Area for RD's is different to that of LHA's due to different accounting for water bodies.  
 Please see the Glossary at <http://www.bcstats.gov.bc.ca/data/sep/index.asp>.

# REGIONAL DISTRICT 17 - CAPITAL

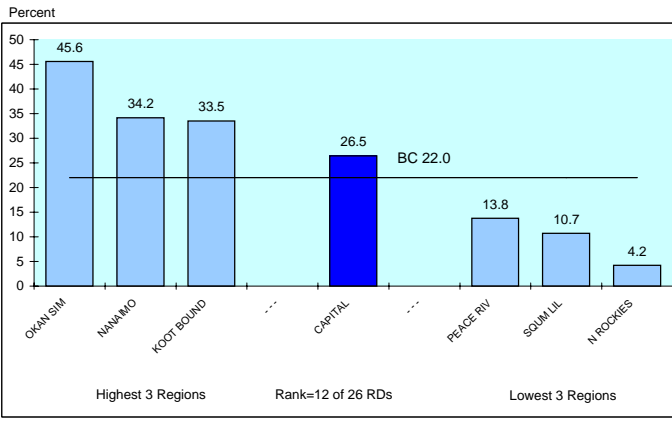
## DEMOGRAPHIC PROFILE

2008

### AGE STRUCTURE

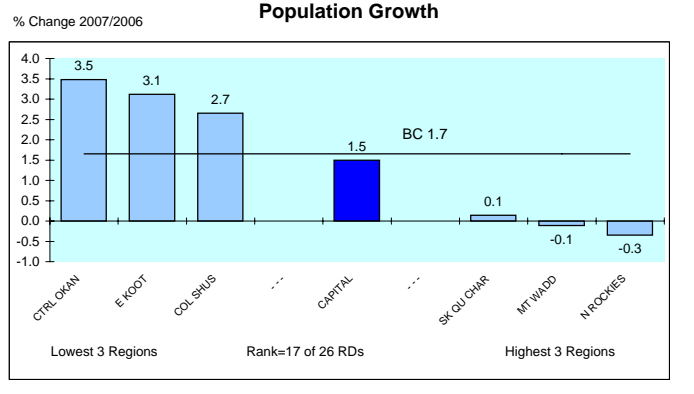
	CAPITAL		CAPITAL		B.C.	
	2008	2008	2018	2008	2018	2018
Population Estimate	(Percent Distribution)					
0-17 years	60,890	16.7	15.3	19.5	18.0	
18-24 years	36,116	9.9	7.6	9.6	7.8	
25-64 years	203,672	55.9	54.8	56.4	56.1	
65+ years	63,430	17.4	22.3	14.5	18.1	
<b>Total</b>	<b>364,108</b>	<b>100.0</b>	<b>100.0</b>	<b>100.0</b>	<b>100.0</b>	<b>100.0</b>
Dependency Rate (%)						
Child		25.4	24.5	29.5	28.2	
<b>Elderly</b>		<b>26.5</b>	<b>35.8</b>	<b>22.0</b>	<b>28.3</b>	
<b>Total</b>		<b>51.8</b>	<b>60.2</b>	<b>51.5</b>	<b>56.5</b>	

#### Elderly Dependency Rate - 2008



### POPULATION GROWTH

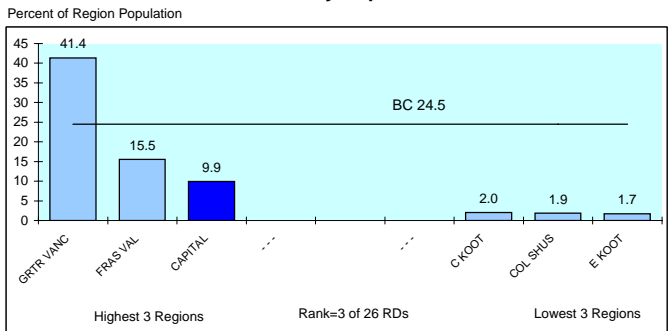
	CAPITAL	B.C.
Annual Average Population Percent Change		
<b>Last year</b>	<b>1.5</b>	<b>1.7</b>
Last 5 years	1.1	1.3
Last 10 years	0.8	1.0



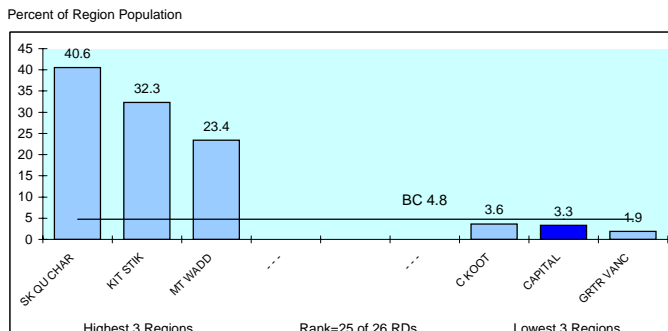
### ETHNIC IDENTITY

	CAPITAL	CAPITAL	B.C.
2006	(Percent Distribution)		
<b>Total Visible Minorities</b>	<b>34,310</b>	<b>9.9</b>	<b>24.5</b>
Single Origins	33,380	9.7	28.1
Chinese	12,390	3.6	9.9
South Asian	7,305	2.1	6.4
Filipino	2,800	0.8	6.4
Japanese	2,395	0.7	0.9
Other	8,490	2.5	4.6
Multiple Origins	930	0.3	0.6
<b>Total Aboriginal People</b>	<b>11,365</b>	<b>3.3</b>	<b>4.8</b>
Rest of Population	299,489	86.8	70.7
<b>Total</b>	<b>345,164</b>	<b>100.0</b>	<b>100.0</b>

#### Visible Minority Population - 2006



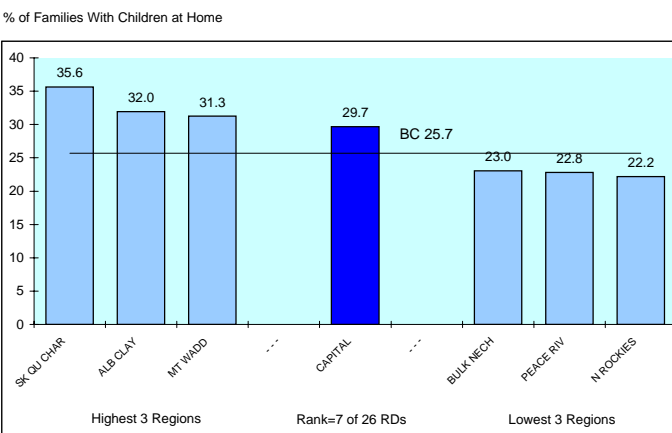
#### Aboriginal Identity - 2006



### FAMILY STRUCTURE

	CAPITAL	CAPITAL	B.C.
Total Census Families - 2006	96,485	(Percent Distribution)	
No Children at Home	45,345	47.0	41.3
Children at Home	51,140	53.0	58.7
Families with Children			
Couples	35,970	70.3	74.3
<b>Lone Parents</b>	<b>15,170</b>	<b>29.7</b>	<b>25.7</b>
Avg Number of Children		1.7	1.8
		(% of Total in Economic Families)	
Unattached Individuals	67,345	25.0	17.9

#### Lone Parent Families as a % of Families With Children at Home - 2006



## INDICATORS OF ECONOMIC HARDSHIP

### INCOME LEVELS

	<u>CAPITAL</u>	<u>B.C.</u>
Average Family Income 2005 (\$) (see Glossary)		
All Census Families	84,032	80,511
Husband/Wife	90,795	86,574
Female Lone Parent	45,869	43,491
Income Distribution Among Families		
< \$20,000	5.7	8.0
\$20,000 - \$79,999	53.1	53.8
\$80,000+	41.1	38.1
Incidence of Low Income in Economic Families	8.2	13.3
Income Inequality Measure	21.4	20.7
<b>Income Share of Bottom Half (poorest) of Households*</b>		
	<b>21.4</b>	<b>20.7</b>

**Income Share of Poorest Households\* - 2005**

Region	Percent
GRTR VANC	19.6
SK OU CHAR	21.3
CAPITAL	21.4
BC	20.7
KOOT BOUND	23.0
COL SHUS	23.7
N ROCKIES	24.4

3 Most Unequal Regions: GRTR VANC, SK OU CHAR, CAPITAL (Rank=3 of 26 RDs)

3 Least Unequal Regions: KOOT BOUND, COL SHUS, N ROCKIES

\* The proportion of each region's household income that accrues to households earning less than the median income. In a situation of perfect equality, the bottom half (poorest) households would receive 50% of the total income.

### INCOME DEPENDENCY

	<u>CAPITAL</u>	<u>B.C.</u>
Composition of Total Income - 2005		
Employment	72.7	77.1
Government Transfers	9.0	9.6
Other	18.3	13.4
Income Dependency 2005		
Forestry	1%	7%
Mining	1%	3%
Construction	6%	8%
Gov't transfer payments	14%	15%
Tourism	6%	6%
Public Sector	38%	26%

**Income Dependency on Forestry, Mining & Fishing\* - 2005**

Region	Percent
N ROCKIES	50.0
BULK NECH	44.0
PEACE RIV	39.0
BC	11.0
CTRL OKAN	6.0
GRTR VANC	5.0
CAPITAL	2.0

Worst 3 Regions: N ROCKIES, BULK NECH, PEACE RIV (Rank=26 of 26 RDs)

Best 3 Regions: CTRL OKAN, GRTR VANC, CAPITAL

BC data is a Weighted Average of LHAs/RDs

### HOUSING COSTS

	<u>CAPITAL</u>	<u>B.C.</u>
Households (Occupied non-farm non-reserve) - 2006		
% Renting	34.7	30.4
Gross Rent or Major Monthly Payment (\$)		
Tenants	820	828
Owners	1063	1059
% Paying 30% or More of Their Income on Housing Costs		
Tenants	43.8	43.4
Owners	21.0	22.7
Total	<b>29.0</b>	<b>29.0</b>

**Households Paying 30% or More on Housing Costs - 2005**

Region	Percent of Households
SOUM LIL	33.0
GRTR VANC	32.7
FRAS VAL	29.3
CAPITAL	29.0
BC	29.0
KIT STIK	17.6
BULK NECH	15.5
N ROCKIES	14.5

Worst 3 Regions: SOUM LIL, GRTR VANC, FRAS VAL (Rank=4 of 26 RDs)

Best 3 Regions: KIT STIK, BULK NECH, N ROCKIES

### INCOME ASSISTANCE

	<u>CAPITAL</u>	<u>B.C.</u>
% of Population Receiving IA Benefits* - September 2008		
Total (0-64)	3.7	3.8
Children (0-18)	2.7	3.3
Youth (19-24)	2.5	3.0
By Duration		
>1 Year	2.8	2.7
<1 Year	0.9	1.2
% of Income Assistance Caseload that are Single Parent Families*		
	11.6	13.9
% of Population 19-64 on Income Assistance* and are Employable		
<b>Total</b>	<b>0.7</b>	<b>0.8</b>
By Duration		
>1 Year	0.3	0.3
<1 Year	0.4	0.5
* All Income Assistance recipients include the disabled but exclude Aboriginal persons on reserve.		
% of OAS Recipients Receiving Max. Gov't Income Supp. - 2008		
Total	1.2	3.3
Males	0.9	2.7
Females	1.2	3.3

**% of Population 19-64 Receiving Income Assistance\* and are Employable - September 2008**

Region	Percent of Population 19-65
SK OU CHAR	3.7
KIT STIK	2.5
ALB CLAY	2.0
CAPITAL	0.7
BC	0.8
E KOOT	0.5
N ROCKIES	0.3
SOUM LIL	0.2

Worst 3 Regions: SK OU CHAR, KIT STIK, ALB CLAY (Rank=21 of 26 RDs)

Best 3 Regions: N ROCKIES, SOUM LIL, CAPITAL

\*Heavy dependency on the primary sector increases the vulnerability of a region to swings in the economic cycle resulting in economic hardship

# REGIONAL DISTRICT 17 - CAPITAL

2008

## INDICATORS OF LABOUR MARKET ISSUES

### LABOUR DEMAND

	<u>CAPITAL</u>	<u>B.C.</u>
Labour Force 2006		
Industrial Structure (% Distribution)		
Goods		
Primary	1.6	4.4
Manufacturing	7.1	7.6
Construction	4.1	8.6
Services	74.5	74.4
Non-Government	12.7	5.0
Government	100.0	100.0
Occupational Structure (% Distribution)		
Management:	10.9	10.5
Professional Occupations in:		
Business & Finance	2.7	2.5
Natural & Applied Sciences	1.4	1.5
Health	4.3	3.4
Social sciences (excl. teachers)	3.1	2.9
Teachers	3.4	2.7
Art & Culture	1.5	1.3
<b>Total</b>	<b>16.4</b>	<b>14.4</b>
Technical Trades & Assorted Other High Skilled Occupations in:		
Finance & Insurance Admin.	3.1	2.2
Techs In Natural & Appl. Sciences	3.9	3.7
Techs. In Health	2.2	2.2
Paraprofs. in Soc Sci Educ etc	2.1	1.5
Techs in Art Culture & Rec.	2.1	2.0
Skilled Sales & Service	4.3	4.7
Trades & Skilled Transp & Equip Ops.	10.5	12.8
<b>Total</b>	<b>28.2</b>	<b>29.1</b>
Intermediate & Lesser Skilled Occups*	44.6	46.0

\* High Skilled Occupations in Primary Manufacturing and Protective Services could not be separated out so are included in Intermediate & Lesser Skilled Occupations.

### LABOUR SUPPLY

	<u>CAPITAL</u>	<u>B.C.</u>
% of Population 20+ With Post Secondary Qualifications - 2006		
Total	66.7	61.8
With Post Secondary Certificate or Diploma	32.4	31.5
<b>With University Degree</b>	<b>29.0</b>	<b>24.1</b>
% Distribution by Field of Study		
Educational, Recreational & Counselling	7.7	7.5
Fine & Applied Arts	4.4	4.2
Humanities & Related	6.4	5.6
Social Sciences & Related	13.2	10.5
Commerce, Managmnt & Business Admin	18.7	21.0
Agricultural & Biological Sciences/Tech	4.4	3.5
Engineering & Applied Sciences	4.5	4.1
Engineering & Applied Science Tech/Trades	16.7	21.1
Health Professions, Sciences & Tech	15.8	14.2
Mathematics & Physical Sciences	5.8	5.5
No Specialization & All Other n.e.c	2.2	2.6
	100.0	100.0

% of Population 20+ With a University Degree - 2006	
Region	Percent
N ROCKIES	9.5
ALB CLAY	10.0
PEACE RIV.	10.2
---	---
---	---
SQUIM LIL	20.6
<b>CAPITAL</b>	<b>29.0</b>
GRTR VANC	30.7

Worst 3 Regions      Rank=25 of 26 RDs      Best 3 Regions

### UNEMPLOYMENT

	<u>CAPITAL</u>	<u>B.C.</u>
Employment Insurance Beneficiaries Sept. 2008		
Total Beneficiaries 19-64 Years of Age	4,453	69,154
Percent Female	65.4	63.6
Percent 19-24 Years Old	11.0	11.4
Total Beneficiaries as a Percent of Population 19-64		
Sep /08	1.9	2.4
Jun /08	1.8	2.5
Mar /08	1.9	2.9
Dec /07	2.0	3.1
Sep /07	1.7	2.2
<b>Most recent 4 quarter average</b>	<b>1.9</b>	<b>2.8</b>

EI Beneficiaries - 4 Quarter Average to September 2008	
Region	% of Population 19-64
SK QU CHAR	6.8
BULK MECH	6.4
KIT STIK	5.3
---	---
---	---
GRTR VANC	2.1
SUNSH CST	2.1
<b>CAPITAL</b>	<b>1.9</b>

Worst 3 Regions      Rank=26 of 26 RDs      Best 3 Regions

### OTHER

	<u>CAPITAL</u>	<u>B.C.</u>
Labour Force 2006		
Participation Rate		
Males	69.8	70.7
Females	61.4	60.7
Total	65.4	65.6
% Full Year, Full Time Workers	47.9	46.5
% Self Employed	14.9	14.1
<b>Average Employment Income (\$) - 2005</b>	<b>34,646</b>	<b>34,978</b>
Average Employment Income of Full-Year Full-Time Workers (\$)		
Males	54,713	57,772
Females	42,111	41,073
Ratio of Female to Male Income	77.0	71.1

Average Employment Income (\$) - 2005	
Region	Dollars
C KOOT	27,766
OKAN SIM	27,820
ALB CLAY	28,388
---	---
<b>CAPITAL</b>	<b>34,646</b>
---	---
GRTR VANC	37,627
PEACE RIV	39,232
N ROCKIES	47,674

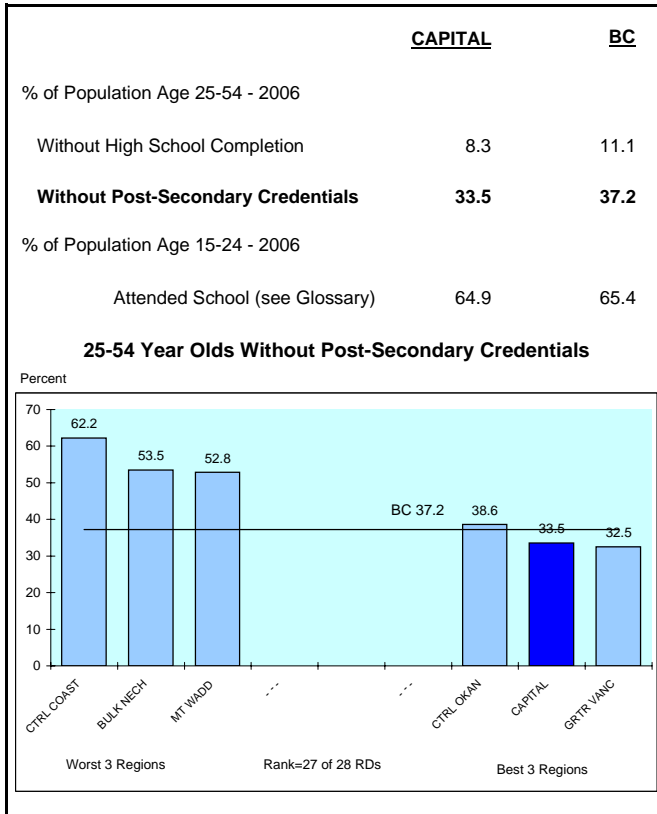
Worst 3 Regions      Rank=21 of 26 RDs      Best 3 Regions

# REGIONAL DISTRICT 17 - CAPITAL

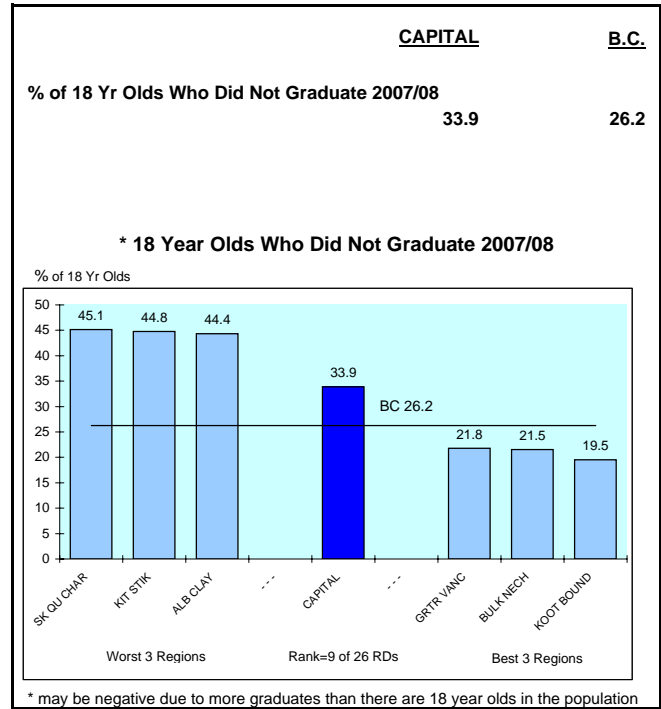
2008

## INDICATORS OF EDUCATION CONCERNS

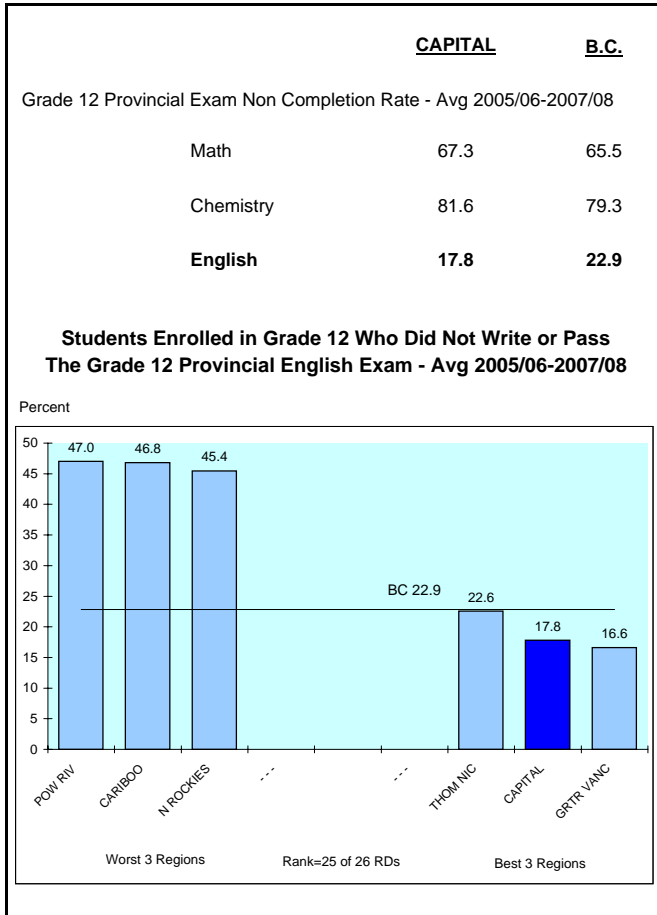
### GENERAL EDUCATION



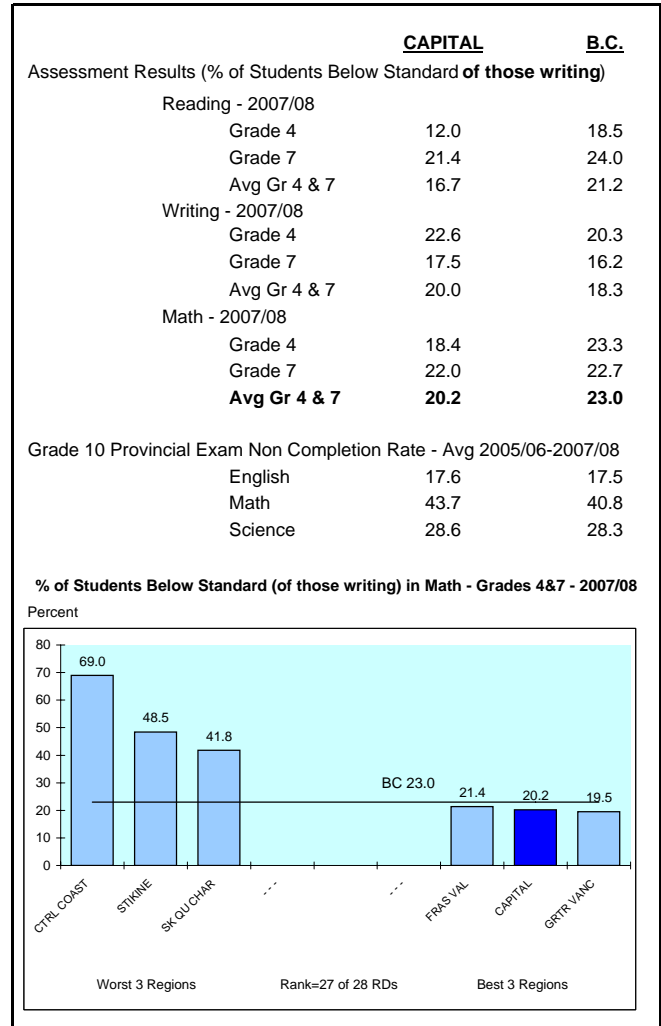
### HIGH SCHOOL



### PROVINCIAL EXAMS



### TEST SCORES



# REGIONAL DISTRICT 17 - CAPITAL

2008

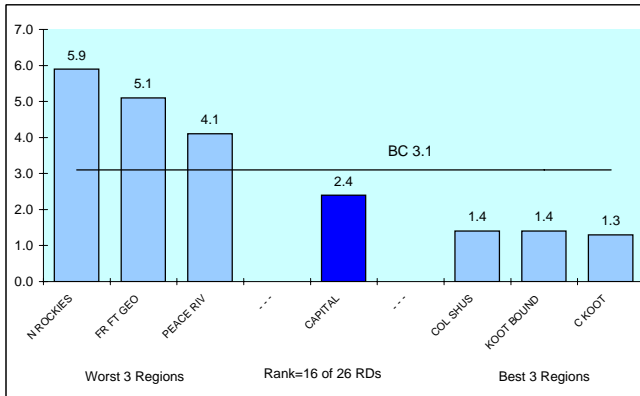
## INDICATORS OF CRIME

### SERIOUS CRIME

	<u>CAPITAL</u>	<u>B.C.</u>
Serious Crime Rate - Avg 2004-2006		
Violent	2.4	3.1
Property	8.6	11.7
Total Serious	11.0	14.8
Number of Serious Crimes Per Police Officer	7.6	10.9
Serious Juvenile (Age 12-17) Crime Rate - Avg 2004-2006		
Violent	2.4	2.5
Property	1.8	2.0
Total Serious	4.2	4.5

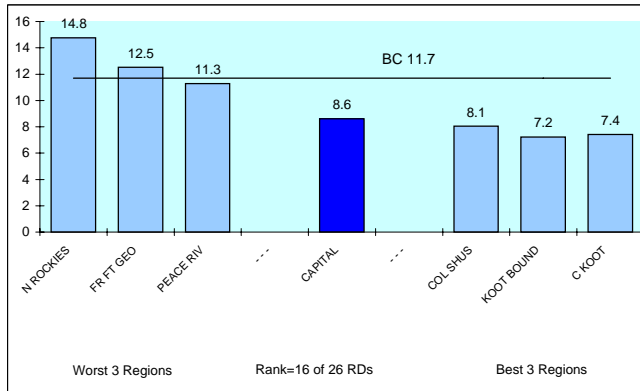
#### Serious Violent Crime Rate - 2004-2006

Offences per 1,000 Population



#### Serious Property Crime Rate - 2004-2006

Offences per 1,000 Population



### OTHER INDICATORS OF CRIME

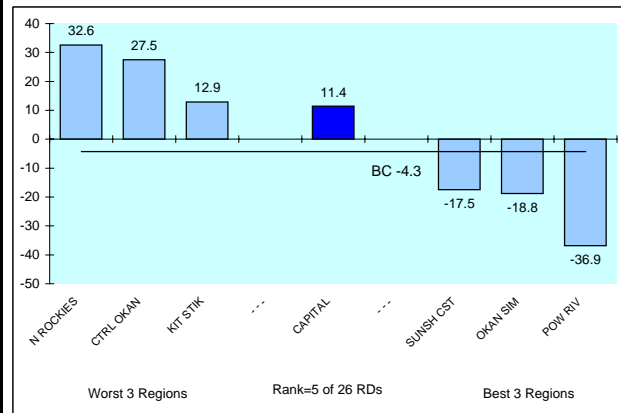
	<u>CAPITAL</u>	<u>B.C.</u>
Crime Rate - Avg 2004-2006		
Motor Vehicle Theft	3.2	8.0

### CHANGE IN CRIME RATE

	<u>CAPITAL</u>	<u>B.C.</u>
Change in Serious Crime Rate - Avg 2004-06 / Avg 2001-03		
Violent	0.0	8.0
Property	14.8	-7.1
Total Serious	11.4	-4.3

#### Change in Total Serious Crime Rate

% Change Avg 04-06/Avg 01-03

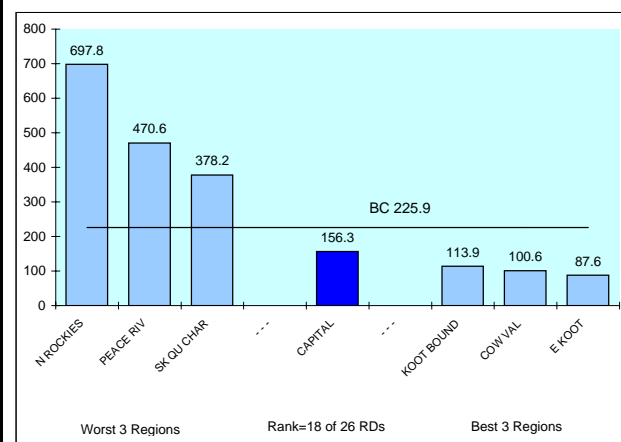


### SERIOUS DRUG CRIME

	<u>CAPITAL</u>	<u>B.C.</u>
Indicators of Serious Drug Crime - Avg 2004-2006		
Non-Cannabis Drug Offences (Offences per 100,000 Pop)	156.3	225.9
Juvenile (12-17) Non-Cannabis Drug Charges (Charges per 100,000 Pop Age 12-17)	72.3	47.0
Illicit Drug Deaths - Avg 2005-2007 (Deaths per 100,000 Pop Age 19-64)	7.3	7.2

#### Non-Cannabis Drug Offences - Avg 2004-2006

Offences per 100,000



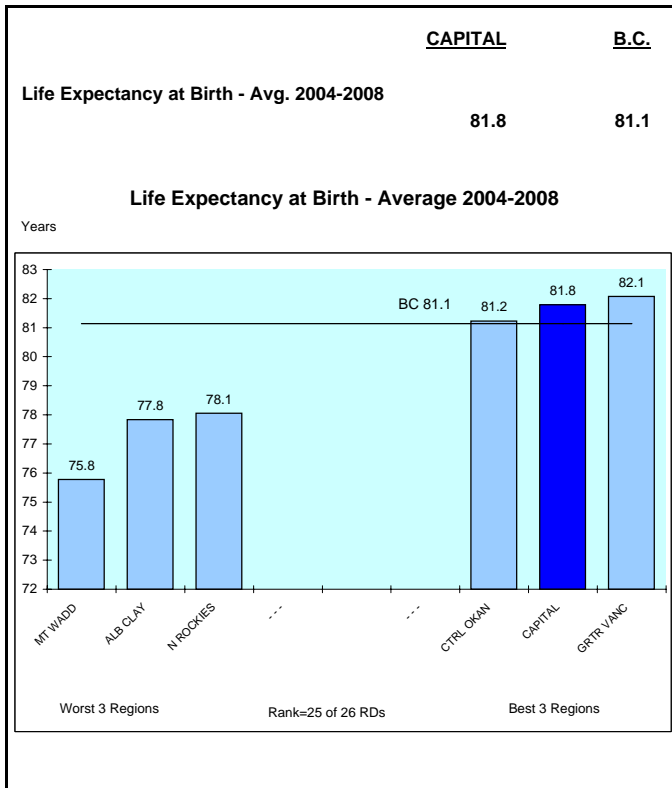
NOTE: Crime Rate = # of Offences(Charges for Juveniles) Per 1,000 Population unless otherwise noted.

# REGIONAL DISTRICT 17 - CAPITAL

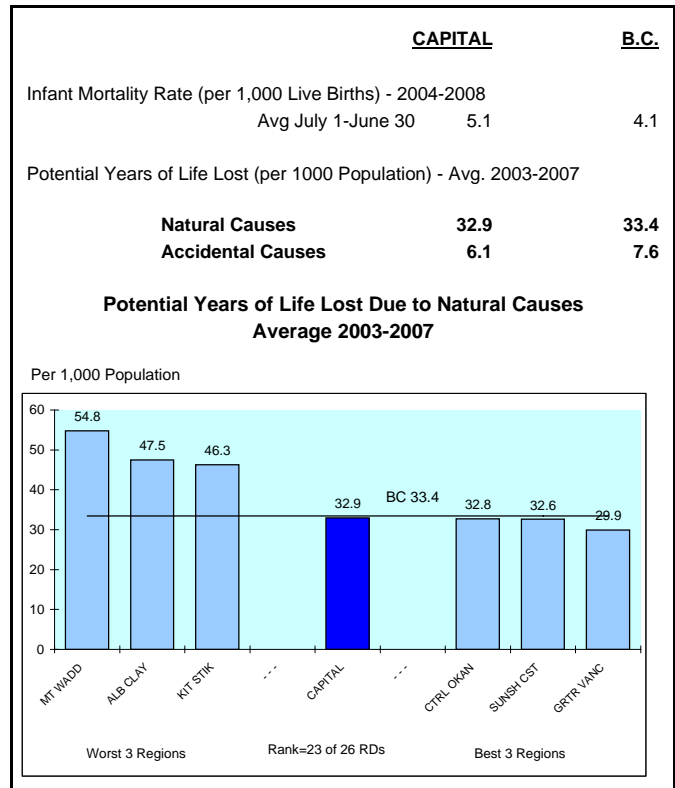
2008

## INDICATORS OF HEALTH PROBLEMS

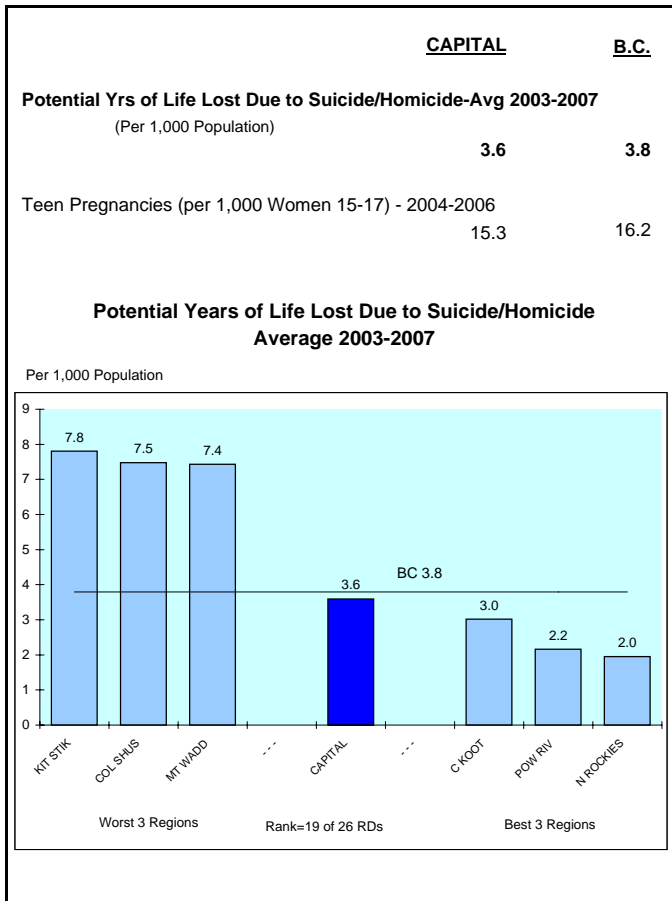
### GENERAL HEALTH



### PHYSICAL HEALTH

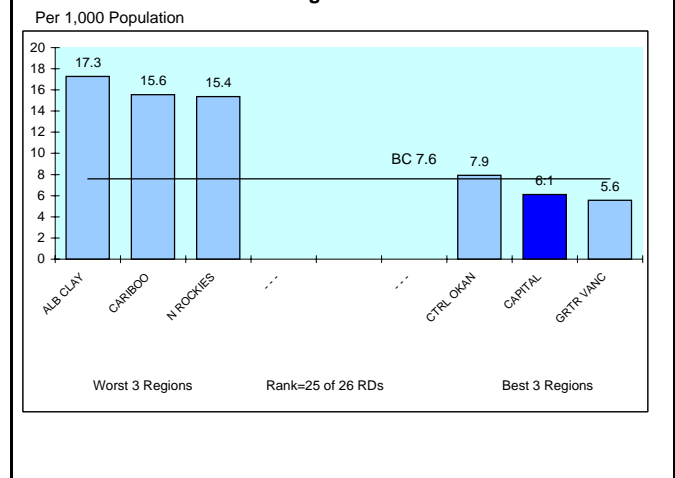


### MENTAL HEALTH



### Potential Years of Life Lost Due to Accidental Causes

**Average 2003-2007**



### ALCOHOL SALES\*

	<b>CAPITAL</b>	<b>B.C.</b>
<b>Per Capita Alcohol Sales - 2008</b>		
(Per Population Age 19+)		
Dollars Spent (\$)	891	805
Litres Consumed	122	112
<b>% Distribution of Litres Sold</b>		
Spirits	6.1	6.5
Wine	17.4	14.5
Beer/Cider/Coolers	76.5	78.9

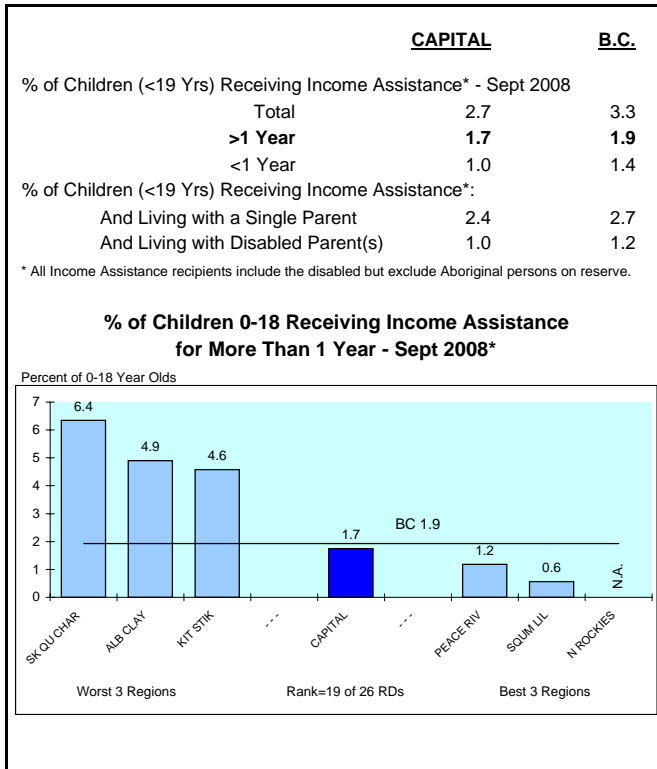
\* Represents sales per resident population 19+, therefore high tourist areas will be overstated

# REGIONAL DISTRICT 17 - CAPITAL

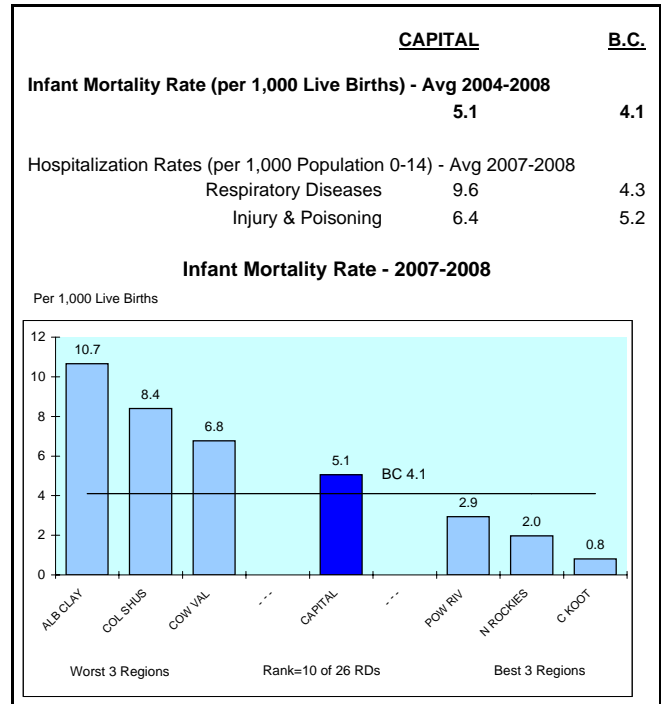
2008

## INDICATORS OF CHILDREN AT RISK

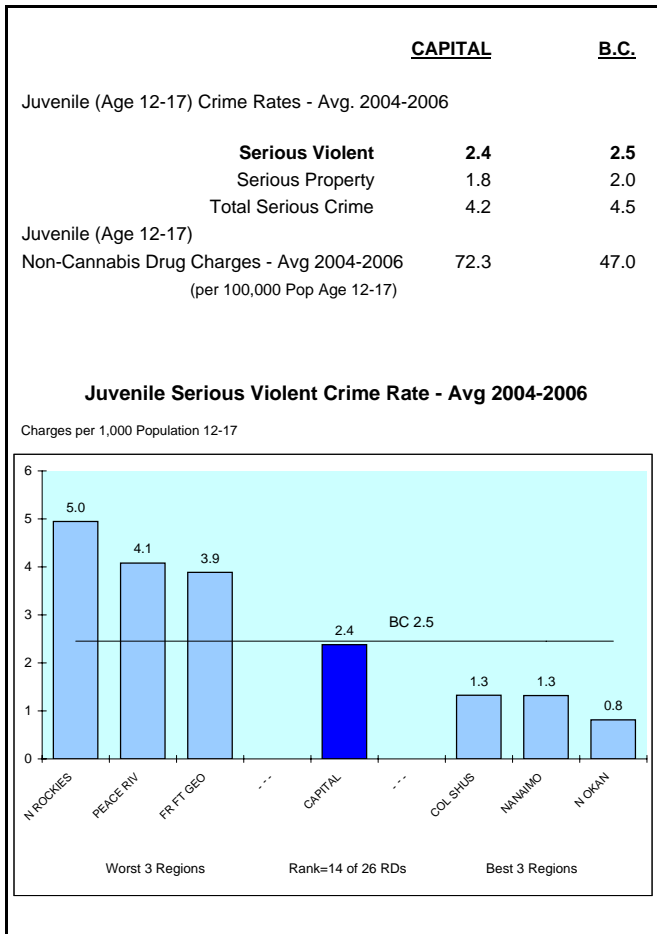
### INCOME ASSISTANCE



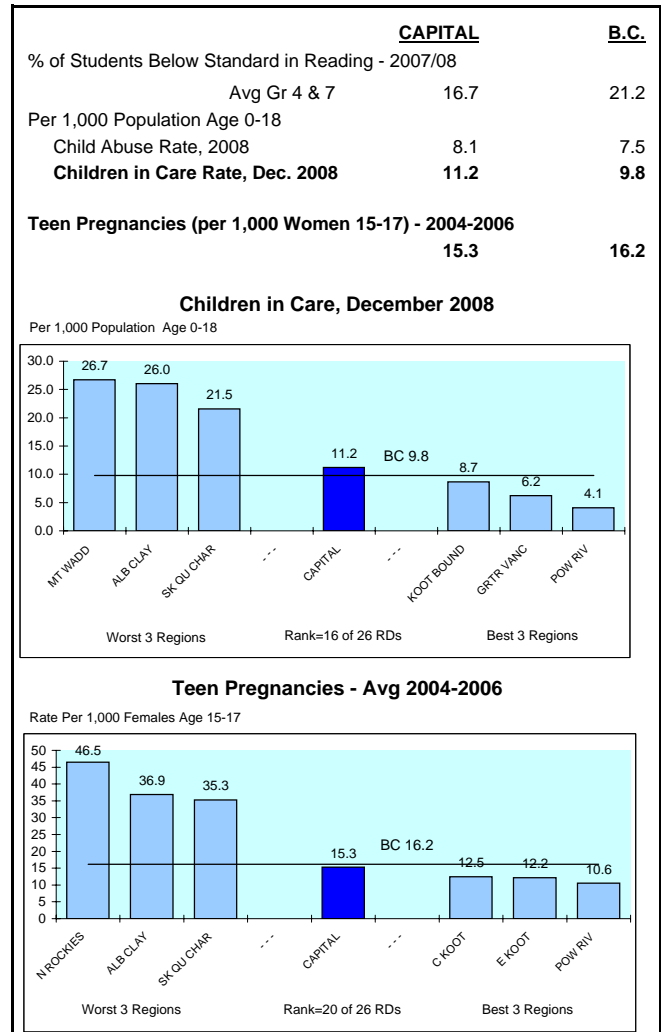
### HEALTH



### CRIME



### OTHER



# REGIONAL DISTRICT 17 - CAPITAL

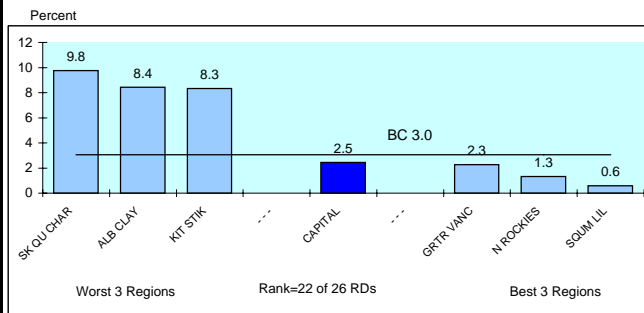
2008

## INDICATORS OF YOUTH AT RISK

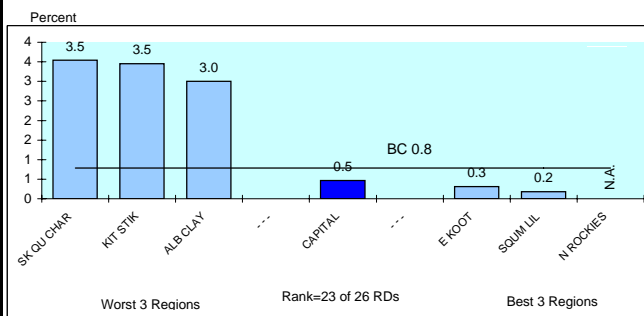
### INCOME ASSISTANCE

	<u>CAPITAL</u>	<u>B.C.</u>
% of Youth (Age 19-24) Receiving Income Assistance* - Sept 2008		
<b>Total</b>	<b>2.5</b>	<b>3.0</b>
> 1 Year	1.5	1.7
<1 Year	0.9	1.3
% of Youth (Age 19-24) on Income Assistance and Single Parents	0.5	0.6
% of Youth (Age 19-24) on Income Assistance and Employable		
<b>Total</b>	<b>0.5</b>	<b>0.8</b>

#### % of Youth 19-24 Receiving Income Assistance - September 2008



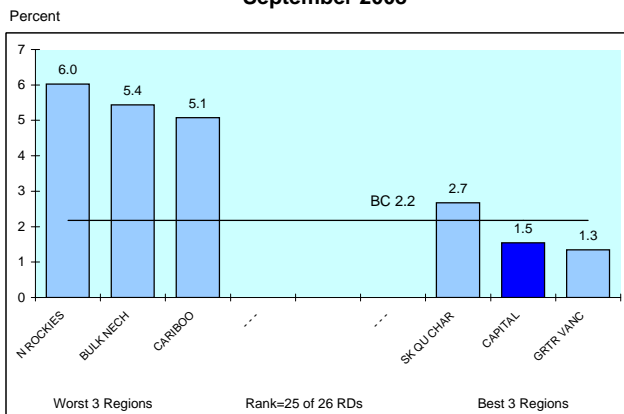
#### % of Youth 19-24 Receiving Income Assistance Who Are Employable



\* All Income Assistance recipients include the disabled but exclude Aboriginal persons on reserve.

### UNEMPLOYMENT

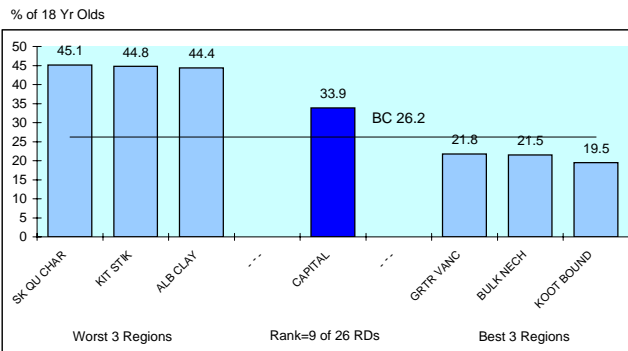
	<u>CAPITAL</u>	<u>B.C.</u>
Employment Insurance Beneficiaries Age 19-24 - Sept 2008	1.5	2.2
Population 19-24 Receiving Employment Insurance September 2008		



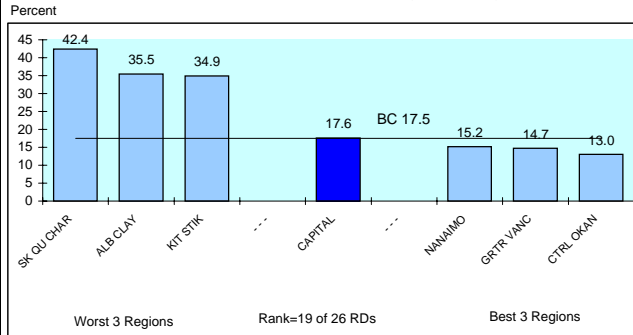
### EDUCATION

	<u>CAPITAL</u>	<u>B.C.</u>
% of 18 Yr Olds Who Did Not Graduate - 2007/08	33.9	26.2
Grade 12 Provincial Exam Non Completion Rate - Avg 2005/06-2007/08		
English	17.8	22.9
Chemistry	81.6	79.3
Math	67.3	65.5
Grade 10 Provincial Exam Non Completion Rate - Avg 2005/06-2007/08		
<b>English</b>	<b>17.6</b>	<b>17.5</b>

#### 18 Year Olds Who Did Not Graduate - 2007/08



#### Gr. 10 Prov. Exam Non-Completion Rate - English - Avg 2005/06-2007/08



### OTHER

	<u>CAPITAL</u>	<u>B.C.</u>
Total Juvenile Serious Crime Rate - Avg 2004-2006 (Offences per 1,000 Pop Age 12-17)	4.2	4.5
Non-Cannabis Juvenile Drug Offences - Avg 2004-2006 (Offences per 100,000 Pop Age 12-17)	72.3	47.0
Hospitalization rates from Motor Vehicle Accidents, 2007/08 (Per 1,000 Pop Age 15-24)	1.6	1.7

#### Hospitalization Rates from Motor Vehicle Accidents - 2007/08

Per 1,000 Population Age 15-24

