

**STATISTICAL PROFILE**



	<b>2006 CENSUS POPULATION</b>		<b>LAND AREA</b>		<b>POPULATION DENSITY</b>
	<u>Number</u>	<u>% of Region</u>	<u>Sq. Km.</u>	<u>% of Region</u>	<u>Persons per Sq.Km.</u>
Williams Lake, C	10,744	17.3%	33.1	0.0%	324.4
Quesnel, C	9,326	15.0%	35.3	0.0%	263.9
100 Mile House, DM	1,885	3.0%	51.3	0.1%	36.7
Wells, DM	236	0.4%	159.1	0.2%	1.5
Rest of Region	39,999	64.3%	80,350.4	99.7%	0.5
<b>Total Region</b>	<b>62,190</b>	<b>100.0%</b>	<b>80,629.3</b>	<b>100.0%</b>	<b>0.8</b>
Total BC	4,113,487		924,815.4		4.4
<b>Region as a % of BC</b>	<b>1.5%</b>		<b>8.7%</b>		

NOTE: BC Total Land Area for RD's is different to that of LHA's due to different accounting for water bodies.  
 Please see the Glossary at <http://www.bcstats.gov.bc.ca/data/sep/index.asp>.

# REGIONAL DISTRICT 41 - CARIBOO

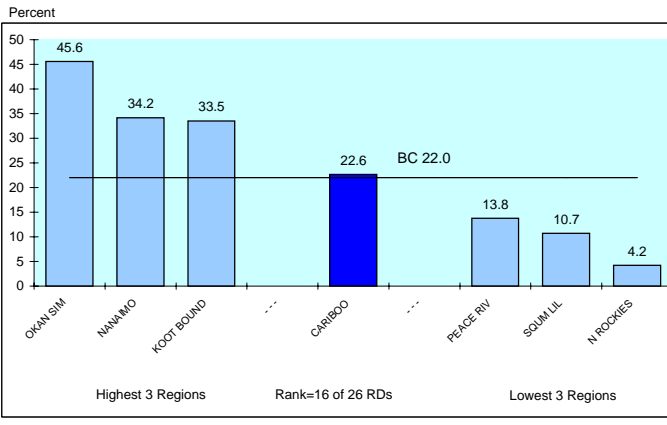
## DEMOGRAPHIC PROFILE

2008

### AGE STRUCTURE

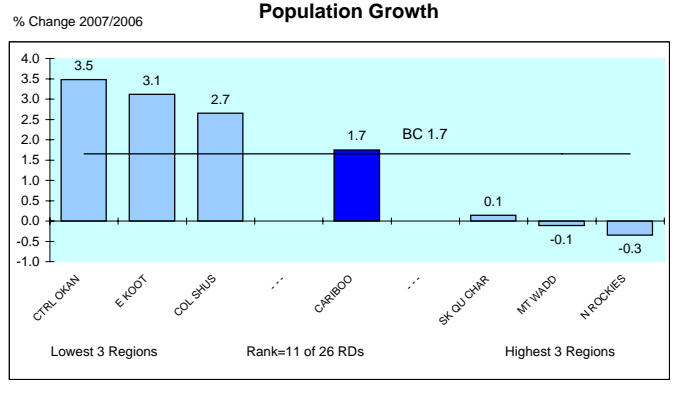
	CARIBOO		CARIBOO		B.C.	
	2008	2008	2018	2008	2018	2018
Population Estimate			(Percent Distribution)			
0-17 years	13,576	21.1	17.6	19.5	18.0	
18-24 years	5,849	9.1	7.8	9.6	7.8	
25-64 years	35,660	55.3	52.4	56.4	56.1	
65+ years	9,395	14.6	22.3	14.5	18.1	
<b>Total</b>	<b>64,480</b>	<b>100.0</b>	<b>100.0</b>	<b>100.0</b>	<b>100.0</b>	<b>100.0</b>
Dependency Rate (%)						
Child		32.7	29.2	29.5	28.2	
<b>Elderly</b>		<b>22.6</b>	<b>37.0</b>	<b>22.0</b>	<b>28.3</b>	
<b>Total</b>		<b>55.3</b>	<b>66.2</b>	<b>51.5</b>	<b>56.5</b>	

#### Elderly Dependency Rate - 2008



### POPULATION GROWTH

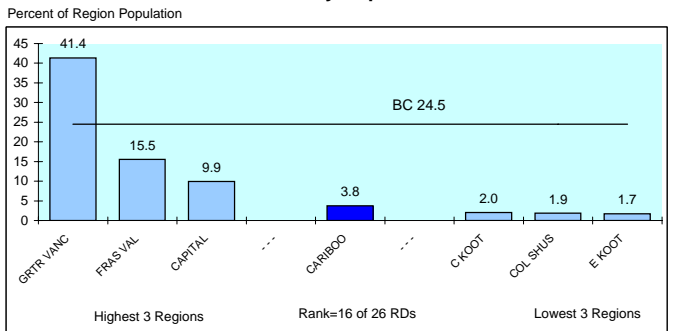
	CARIBOO	B.C.
Annual Average Population Percent Change		
<b>Last year</b>	<b>1.7</b>	<b>1.7</b>
Last 5 years	-0.1	1.3
Last 10 years	-0.8	1.0



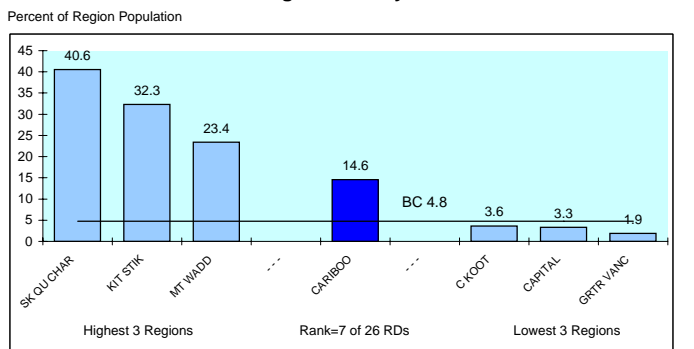
### ETHNIC IDENTITY

	CARIBOO	CARIBOO	B.C.
2006	2006	2006	2006
		(Percent Distribution)	
<b>Total Visible Minorities</b>	<b>2,345</b>	<b>3.8</b>	<b>24.5</b>
Single Origins	2,315	3.7	28.1
Chinese	325	0.5	9.9
South Asian	1,400	2.3	6.4
Filipino	160	0.3	6.4
Japanese	150	0.2	0.9
Other	280	0.5	4.6
Multiple Origins	30	0.0	0.6
<b>Total Aboriginal People</b>	<b>9,085</b>	<b>14.6</b>	<b>4.8</b>
Rest of Population	50,760	81.6	70.7
<b>Total</b>	<b>62,190</b>	<b>100.0</b>	<b>100.0</b>

#### Visible Minority Population - 2006



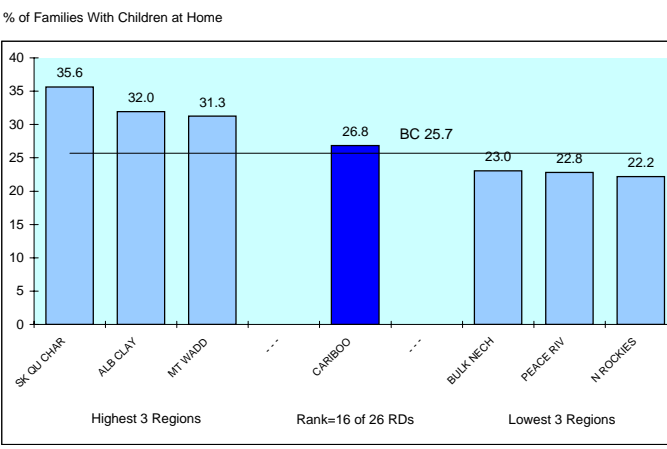
#### Aboriginal Identity - 2006



### FAMILY STRUCTURE

	CARIBOO	CARIBOO	B.C.
2006	2006	2006	2006
		(Percent Distribution)	
Total Census Families - 2006	18,575		
No Children at Home	8,905	47.9	41.3
Children at Home	9,670	52.1	58.7
Families with Children			
Couples	7,070	73.1	74.3
<b>Lone Parents</b>	<b>2,595</b>	<b>26.8</b>	<b>25.7</b>
Avg Number of Children		1.8	1.8
		(% of Total in Economic Families)	
Unattached Individuals	8,145	15.3	17.9

#### Lone Parent Families as a % of Families With Children at Home - 2006



## INDICATORS OF ECONOMIC HARDSHIP

### INCOME LEVELS

	<u>CARIBOO</u>	<u>B.C.</u>
Average Family Income 2005 (\$) (see Glossary)		
All Census Families	69,064	80,511
Husband/Wife	73,978	86,574
Female Lone Parent	36,300	43,491
Income Distribution Among Families		
< \$20,000	9.5	8.0
\$20,000 - \$79,999	58.0	53.8
\$80,000+	32.5	38.1
Incidence of Low Income in Economic Families	9.4	13.3
Income Inequality Measure	21.7	20.7
<b>Income Share of Bottom Half (poorest) of Households*</b>	<b>21.7</b>	<b>20.7</b>

**Income Share of Poorest Households\* - 2005**

Region	Percent
GRTR VANC	19.6
SK OU CHAR	21.3
CAPITAL	21.4
CARIBOO	21.7
BC	20.7
KOOT BOUND	23.0
COL SHUS	23.7
N ROCKIES	24.4

3 Most Unequal Regions Rank=4 of 26 RDs 3 Least Unequal Regions

\* The proportion of each region's household income that accrues to households earning less than the median income. In a situation of perfect equality, the bottom half (poorest) households would receive 50% of the total income.

### HOUSING COSTS

	<u>CARIBOO</u>	<u>B.C.</u>
Households (Occupied non-farm non-reserve) - 2006		
% Renting	22.2	30.4
Gross Rent or Major Monthly Payment (\$)		
Tenants	573	828
Owners	691	1059
% Paying 30% or More of Their Income on Housing Costs		
Tenants	37.4	43.4
Owners	13.2	22.7
Total	<b>18.6</b>	<b>29.0</b>

**Households Paying 30% or More on Housing Costs - 2005**

Region	Percent of Households
SKOU LIL	33.0
GRTR VANC	32.7
FRAS VAL	29.3
CARIBOO	18.6
BC	29.0
KIT STIK	17.6
BULK NECH	15.5
N ROCKIES	14.5

Worst 3 Regions Rank=22 of 26 RDs Best 3 Regions

### INCOME DEPENDENCY

	<u>CARIBOO</u>	<u>B.C.</u>
Composition of Total Income - 2005		
Employment	78.0	77.1
Government Transfers	12.0	9.6
Other	10.0	13.4
Income Dependency 2005		
Forestry	34%	7%
Mining	4%	3%
Construction	6%	8%
Gov't transfer payments	16%	15%
Tourism	4%	6%
Public Sector	20%	26%

**Income Dependency on Forestry, Mining & Fishing\* - 2005**

Region	Percent
N ROCKIES	50.0
BULK NECH	44.0
PEACE RIV	39.0
CARIBOO	38.0
BC	11.0
CTRL OKAN	6.0
GRTR VANC	5.0
CAPITAL	2.0

Worst 3 Regions Rank=5 of 26 RDs Best 3 Regions

BC data is a Weighted Average of LHAs/RDs

### INCOME ASSISTANCE

	<u>CARIBOO</u>	<u>B.C.</u>
% of Population Receiving IA Benefits* - September 2008		
Total (0-64)	5.1	3.8
Children (0-18)	5.0	3.3
Youth (19-24)	6.1	3.0
By Duration		
>1 Year	3.4	2.7
<1 Year	1.7	1.2
% of Income Assistance Caseload that are Single Parent Families*	18.1	13.9
% of Population 19-64 on Income Assistance* and are Employable	<b>1.1</b>	<b>0.8</b>
By Duration		
>1 Year	0.4	0.3
<1 Year	0.8	0.5
* All Income Assistance recipients include the disabled but exclude Aboriginal persons on reserve.		
% of OAS Recipients Receiving Max. Gov't Income Supp. - 2008		
Total	3.6	3.3
Males	3.1	2.7
Females	3.6	3.3
<b>% of Population 19-64 Receiving Income Assistance* and are Employable - September 2008</b>		

**% of Population 19-64 Receiving Income Assistance\* and are Employable - September 2008**

Region	Percent of Population 19-65
SK OU CHAR	3.7
KIT STIK	2.5
ALB CLAY	2.0
CARIBOO	1.1
BC	0.8
E KOOT	0.5
N ROCKIES	0.3
SKOU LIL	0.2

Worst 3 Regions Rank=9 of 26 RDs Best 3 Regions

\*Heavy dependency on the primary sector increases the vulnerability of a region to swings in the economic cycle resulting in economic hardship

# REGIONAL DISTRICT 41 - CARIBOO

2008

## INDICATORS OF LABOUR MARKET ISSUES

### LABOUR DEMAND

	CARIBOO	B.C.
Labour Force 2006		
Industrial Structure (% Distribution)		
Goods		
Primary	15.7	4.4
Manufacturing	7.2	7.6
Construction	14.9	8.6
Services		
Non-Government	57.3	74.4
Government	4.9	5.0
	100.0	100.0
Occupational Structure (% Distribution)		
Management:	7.2	10.5
Professional Occupations in:		
Business & Finance	1.1	2.5
Natural & Applied Sciences	1.7	1.5
Health	2.0	3.4
Social sciences (excl. teachers)	2.7	2.9
Teachers	1.8	2.7
Art & Culture	1.0	1.3
<b>Total</b>	<b>10.2</b>	<b>14.4</b>
Technical Trades & Assorted Other High Skilled Occupations in:		
Finance & Insurance Admin.	1.5	2.2
Techs In Natural & Appl. Sciences	3.5	3.7
Techs. In Health	2.2	2.2
Paraprofs. in Soc Sci Educ etc	0.5	1.5
Techs in Art Culture & Rec.	1.0	2.0
Skilled Sales & Service	3.6	4.7
Trades & Skilled Transp & Equip Ops.	18.6	12.8
<b>Total</b>	<b>30.8</b>	<b>29.1</b>
Intermediate & Lesser Skilled Occups*	51.7	46.0

\* High Skilled Occupations in Primary Manufacturing and Protective Services could not be separated out so are included in Intermediate & Lesser Skilled Occupations.

### LABOUR SUPPLY

	CARIBOO	B.C.
% of Population 20+ With Post Secondary Qualifications - 2006		
Total	47.4	61.8
With Post Secondary Certificate or Diploma	33.0	31.5
<b>With University Degree</b>	<b>10.5</b>	<b>24.1</b>
% Distribution by Field of Study		
Educational, Recreational & Counselling	9.3	7.5
Fine & Applied Arts	2.0	4.2
Humanities & Related	2.7	5.6
Social Sciences & Related	6.7	10.5
Commerce, Managmnt & Business Admin	17.6	21.0
Agricultural & Biological Sciences/Tech	2.0	3.5
Engineering & Applied Sciences	1.8	4.1
Engineering & Applied Science Tech/Trades	28.2	21.1
Health Professions, Sciences & Tech	14.5	14.2
Mathematics & Physical Sciences	6.8	5.5
No Specialization & All Other n.e.c	8.4	2.6
	100.0	100.0

% of Population 20+ With a University Degree - 2006	
Region	Percent
N ROCKIES	9.5
ALB CLAY	10.0
PEACE RIV.	10.2
CARIBOO	10.5
SQUIM LIL	20.6
CAPITAL	29.0
GRTR VANC	30.7

BC 24.1

Worst 3 Regions      Rank=4 of 26 RDs      Best 3 Regions

### UNEMPLOYMENT

	CARIBOO	B.C.
Employment Insurance Beneficiaries Sept. 2008		
Total Beneficiaries 19-64 Years of Age	1,548	69,154
Percent Female	56.7	63.6
Percent 19-24 Years Old	15.8	11.4
Total Beneficiaries as a Percent of Population 19-64		
Sep /08	3.8	2.4
Jun /08	4.8	2.5
Mar /08	5.3	2.9
Dec /07	4.4	3.1
Sep /07	3.4	2.2
<b>Most recent 4 quarter average</b>	<b>4.6</b>	<b>2.8</b>

EI Beneficiaries - 4 Quarter Average to September 2008	
Region	% of Population 19-64
SK QU CHAR	6.8
BULK MECH	6.4
KIT STIK	5.3
CARIBOO	4.6
GRTR VANC	2.1
SUNSH CST	2.1
CAPITAL	1.9

BC 2.8

Worst 3 Regions      Rank=6 of 26 RDs      Best 3 Regions

### OTHER

	CARIBOO	B.C.
Labour Force 2006		
Participation Rate		
Males	70.5	70.7
Females	60.6	60.7
Total	65.6	65.6
% Full Year, Full Time Workers	44.6	46.5
% Self Employed	15.1	14.1
<b>Average Employment Income (\$) - 2005</b>	<b>32,589</b>	<b>34,978</b>
Average Employment Income of Full-Year Full-Time Workers (\$)		
Males	54,167	57,772
Females	34,813	41,073
Ratio of Female to Male Income	64.3	71.1

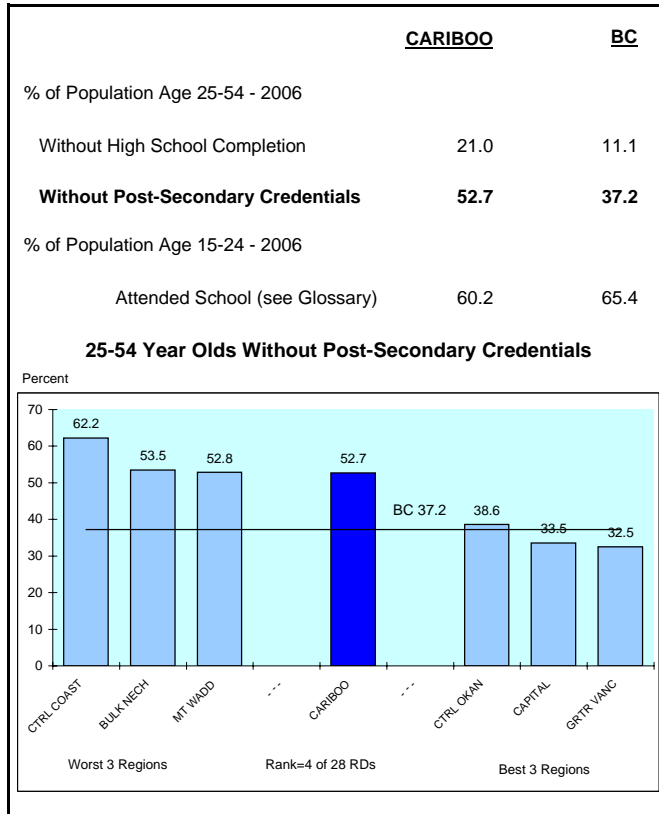
Average Employment Income (\$) - 2005	
Region	Dollars
C KOOT	27,766
OKAN SIM	27,820
ALB CLAY	28,388
CARIBOO	32,589
GRTR VANC	37,627
PEACE RIV	39,232
N ROCKIES	47,674

BC 34,978

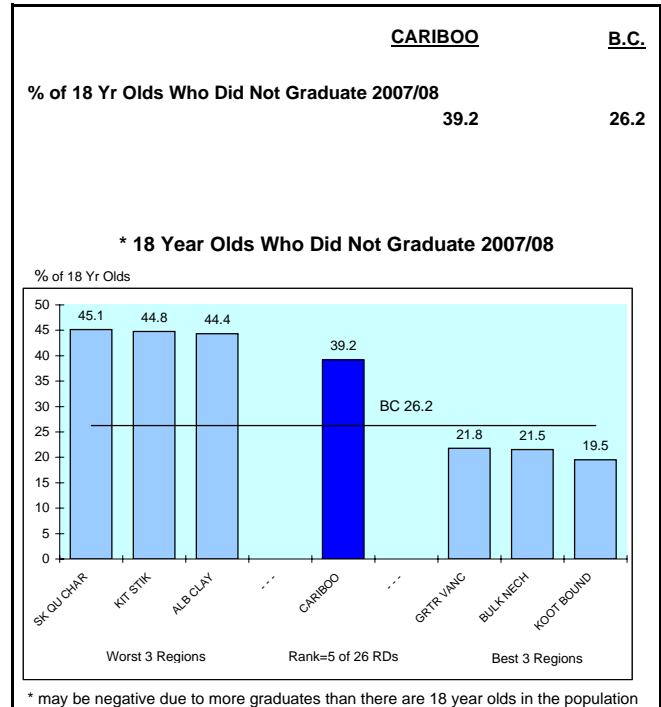
Worst 3 Regions      Rank=17 of 26 RDs      Best 3 Regions

## INDICATORS OF EDUCATION CONCERNS

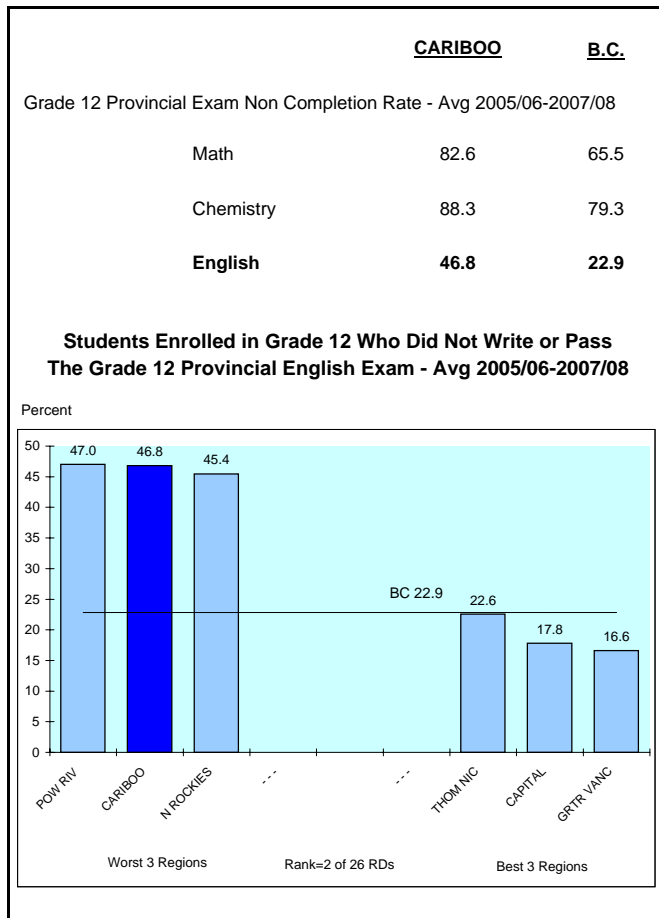
### GENERAL EDUCATION



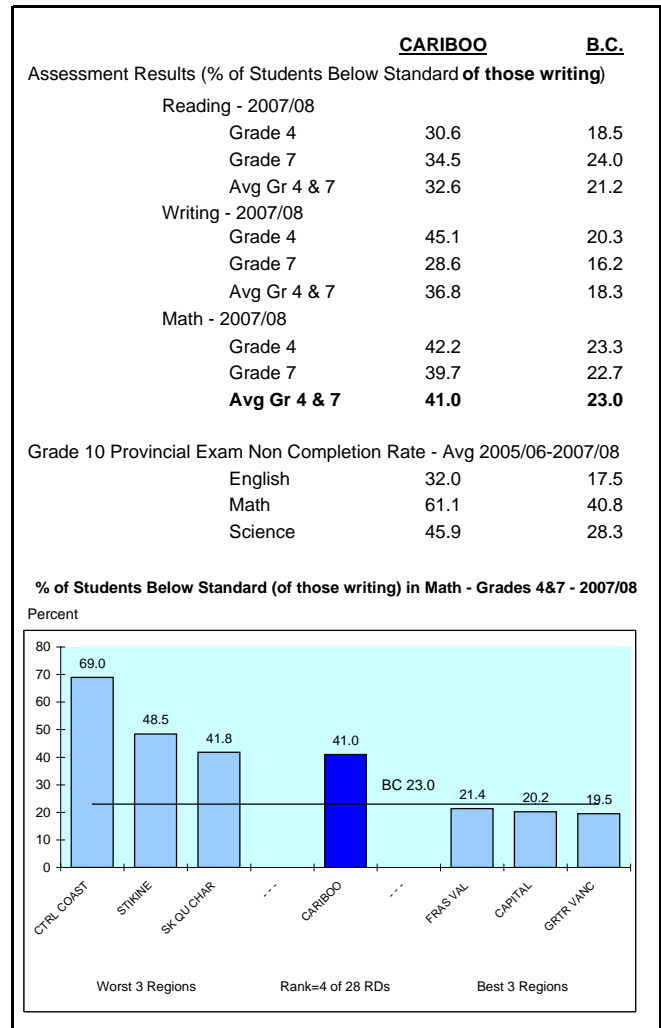
### HIGH SCHOOL



### PROVINCIAL EXAMS



### TEST SCORES

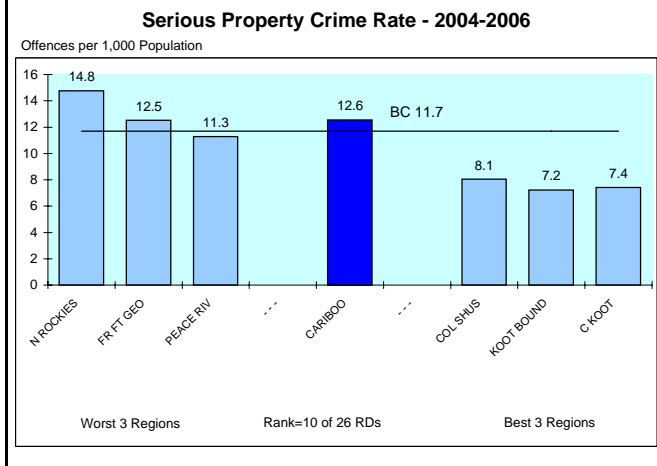
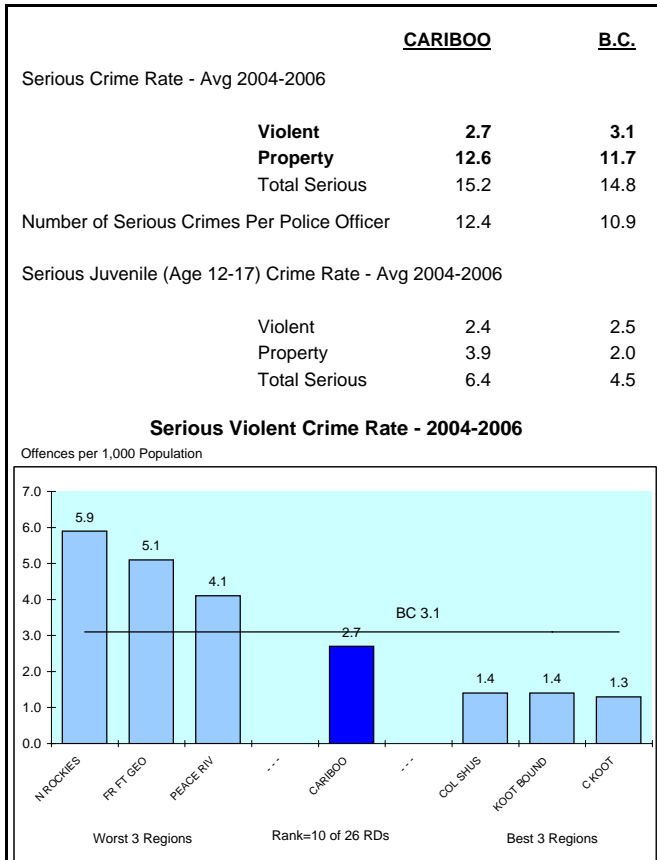


# REGIONAL DISTRICT 41 - CARIBOO

2008

## INDICATORS OF CRIME

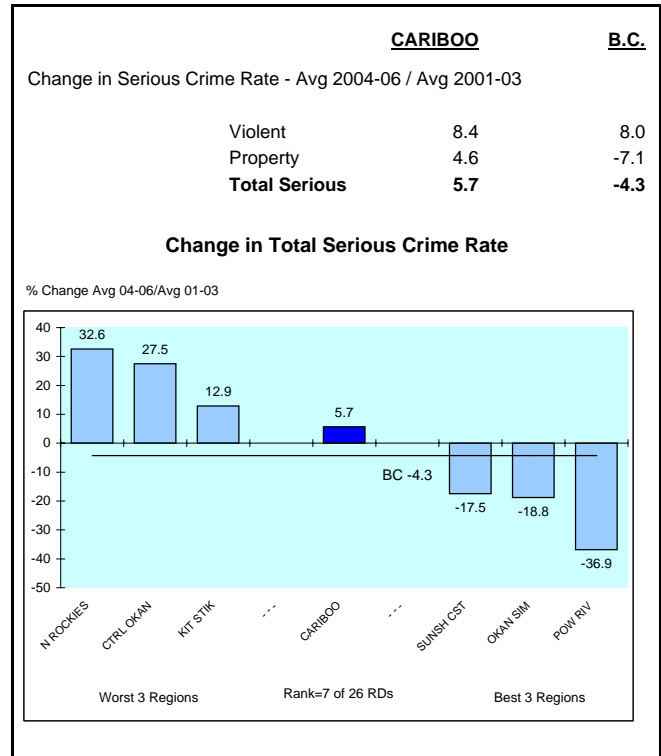
### SERIOUS CRIME



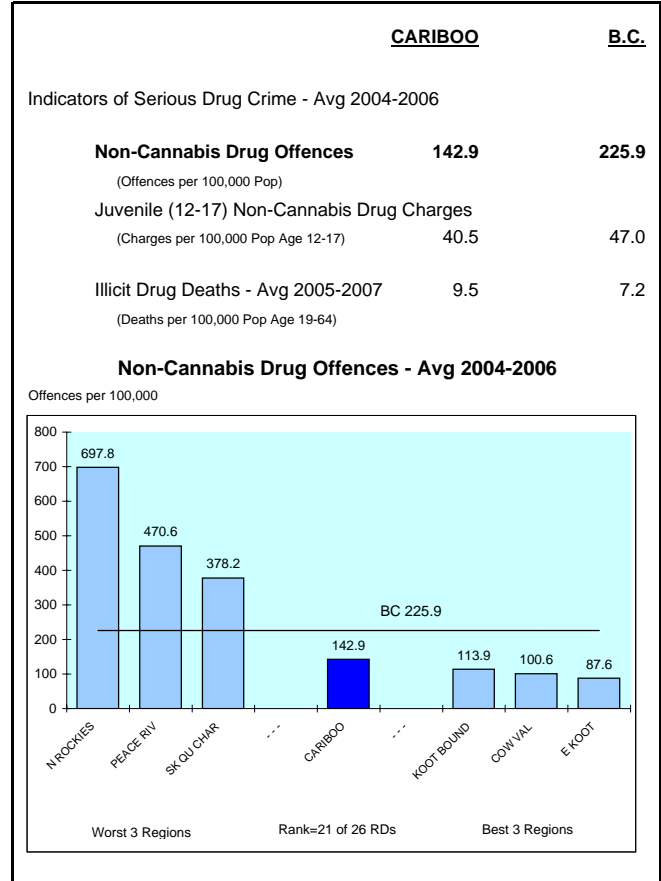
### OTHER INDICATORS OF CRIME

	<u>CARIBOO</u>	<u>B.C.</u>
Crime Rate - Avg 2004-2006		
<b>Motor Vehicle Theft</b>	5.3	8.0

### CHANGE IN CRIME RATE



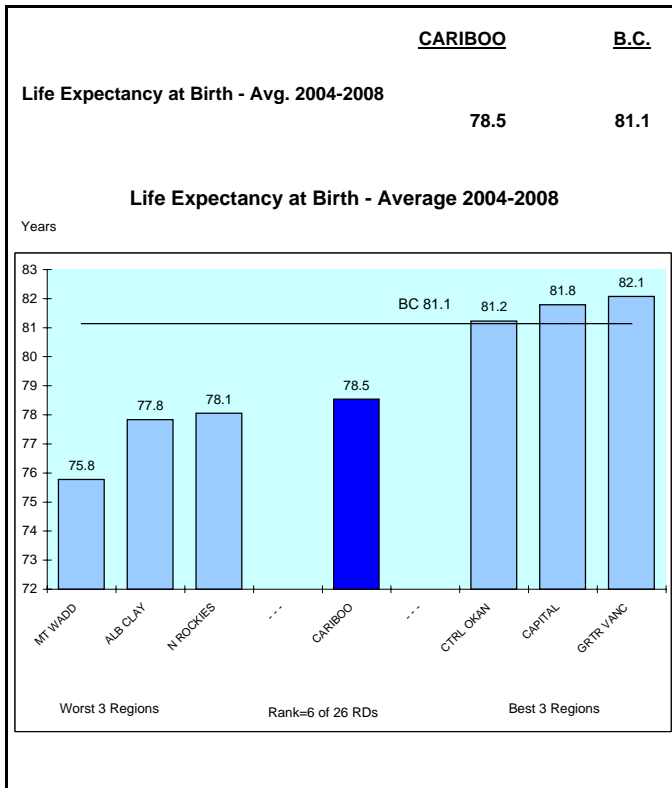
### SERIOUS DRUG CRIME



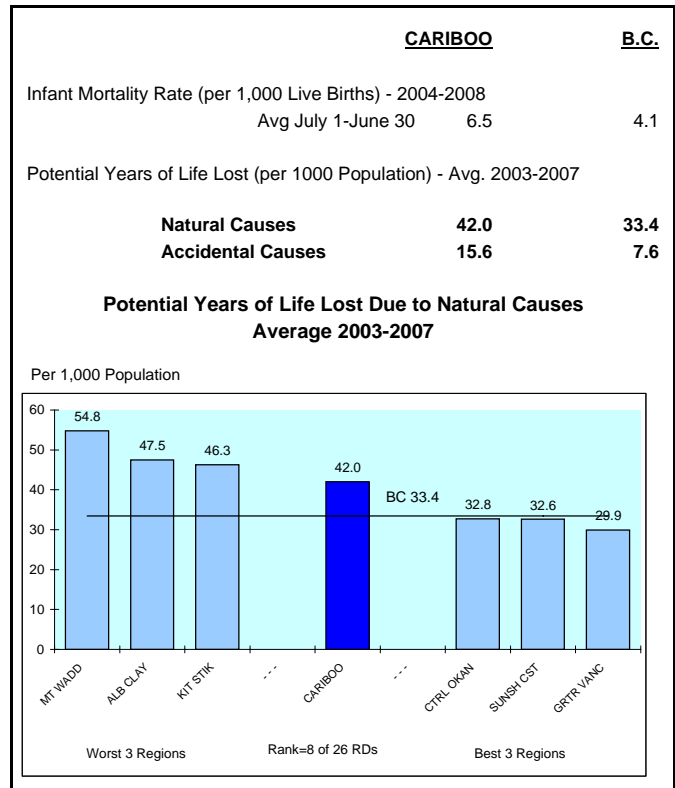
NOTE: Crime Rate = # of Offences(Charges for Juveniles) Per 1,000 Population unless otherwise noted.

## INDICATORS OF HEALTH PROBLEMS

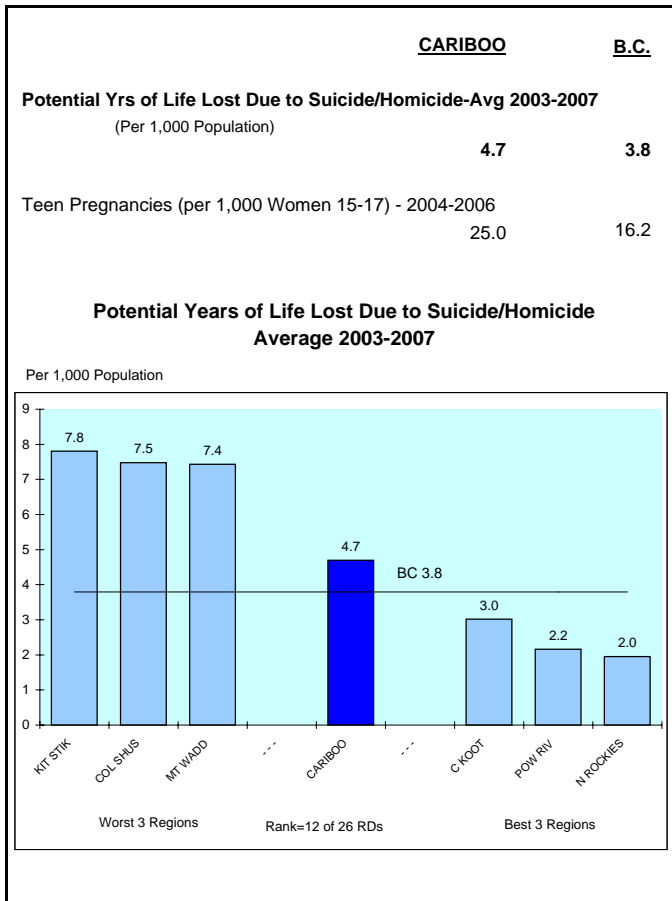
### GENERAL HEALTH



### PHYSICAL HEALTH

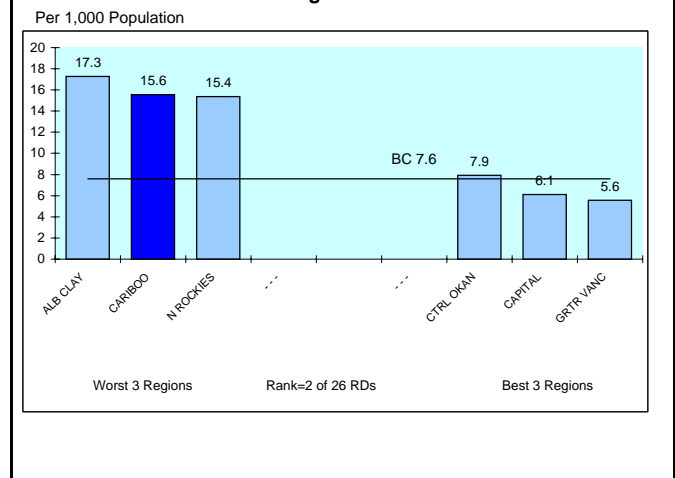


### MENTAL HEALTH



### Potential Years of Life Lost Due to Accidental Causes

Average 2003-2007



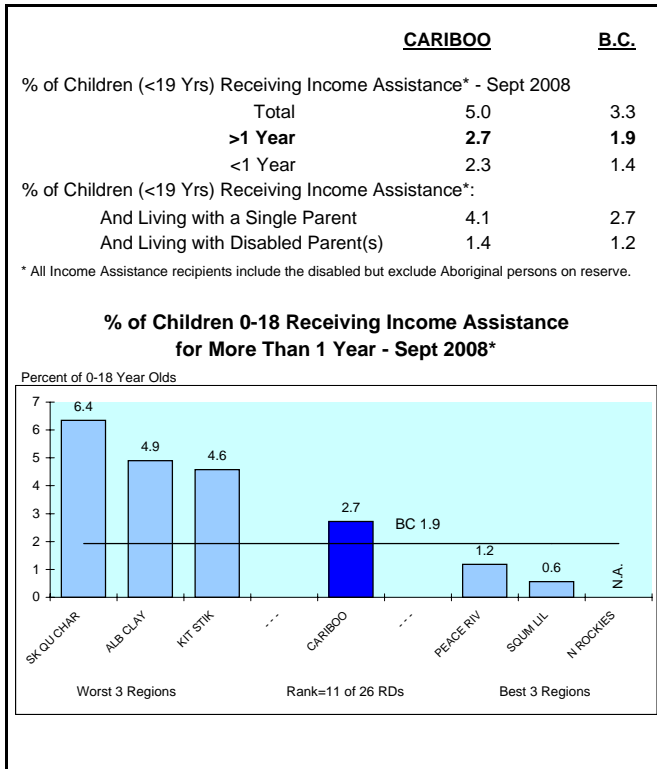
### ALCOHOL SALES\*

	<b>CARIBOO</b>	<b>B.C.</b>
<b>Per Capita Alcohol Sales - 2008</b> (Per Population Age 19+)		
Dollars Spent (\$)	899	805
Litres Consumed	145	112
<b>% Distribution of Litres Sold</b>		
Spirits	6.8	6.5
Wine	8.3	14.5
Beer/Cider/Coolers	84.9	78.9

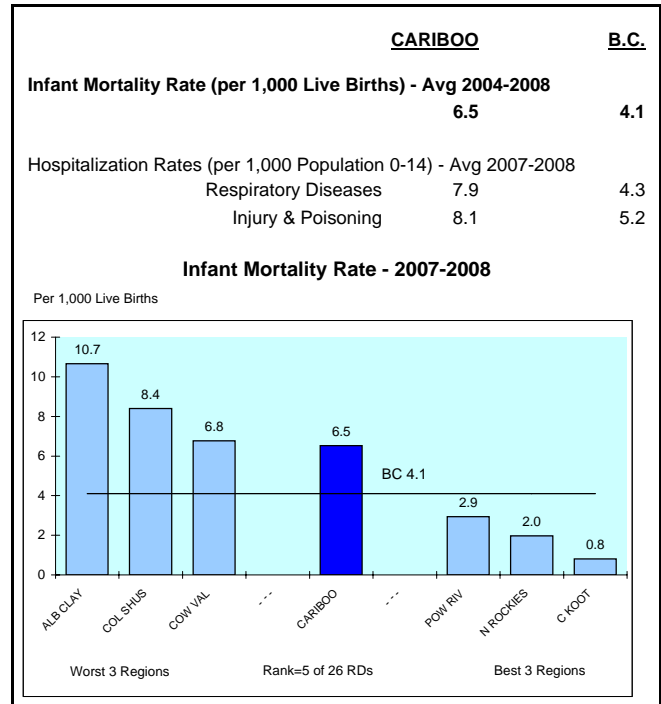
\* Represents sales per resident population 19+, therefore high tourist areas will be overstated

## INDICATORS OF CHILDREN AT RISK

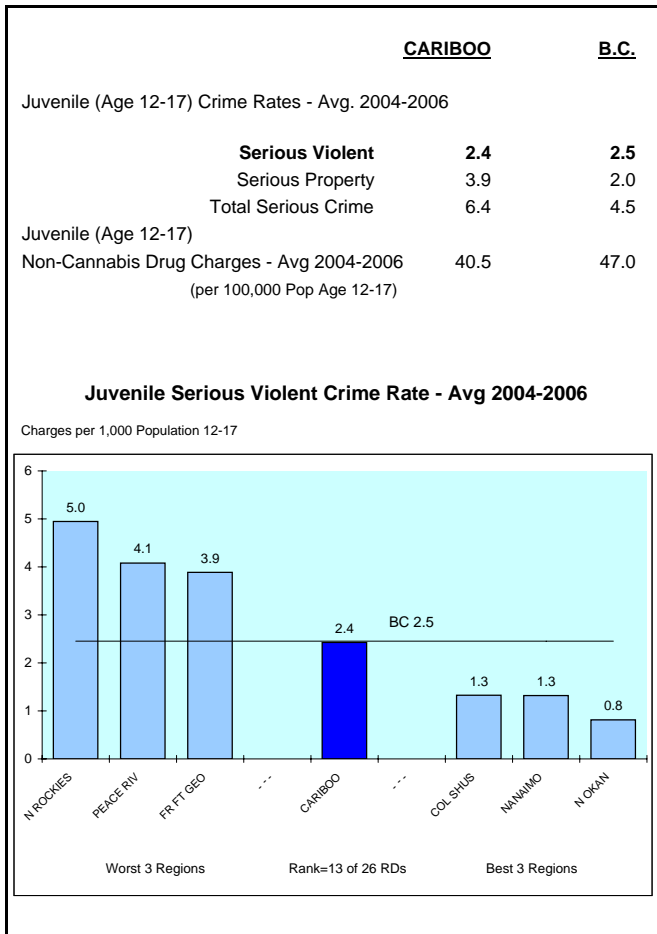
### INCOME ASSISTANCE



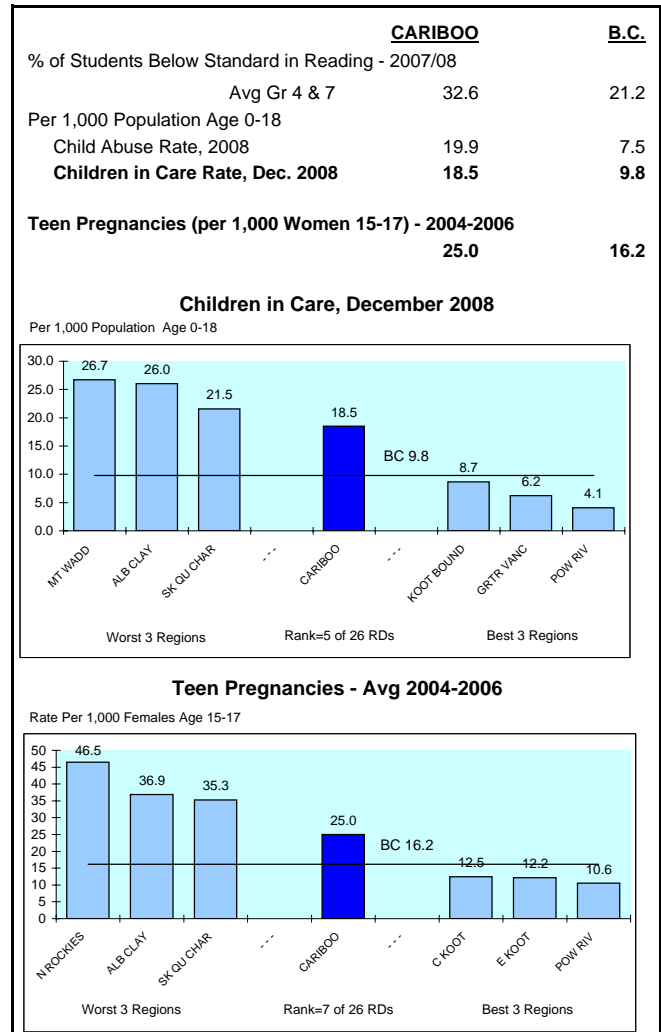
### HEALTH



### CRIME



### OTHER



# REGIONAL DISTRICT 41 - CARIBOO

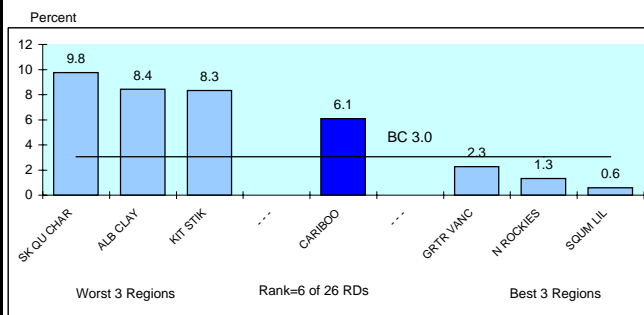
2008

## INDICATORS OF YOUTH AT RISK

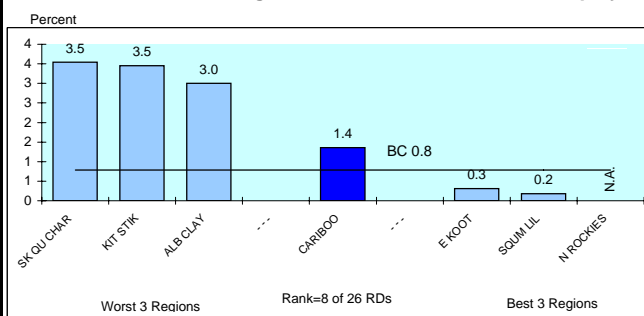
### INCOME ASSISTANCE

	<u>CARIBOO</u>	<u>B.C.</u>
% of Youth (Age 19-24) Receiving Income Assistance* - Sept 2008		
<b>Total</b>	<b>6.1</b>	<b>3.0</b>
> 1 Year	3.6	1.7
<1 Year	2.5	1.3
% of Youth (Age 19-24) on Income Assistance and Single Parents	1.6	0.6
% of Youth (Age 19-24) on Income Assistance and Employable		
<b>Total</b>	<b>1.4</b>	<b>0.8</b>

#### % of Youth 19-24 Receiving Income Assistance - September 2008



#### % of Youth 19-24 Receiving Income Assistance Who Are Employable

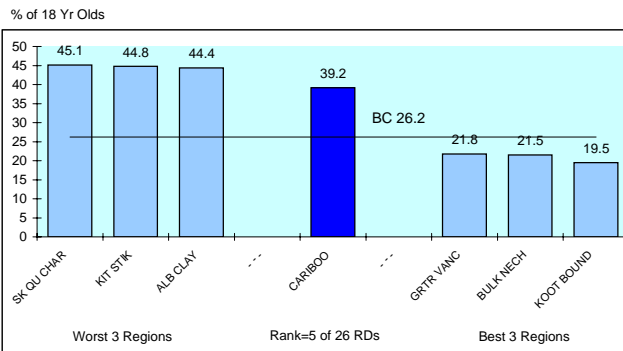


\* All Income Assistance recipients include the disabled but exclude Aboriginal persons on reserve.

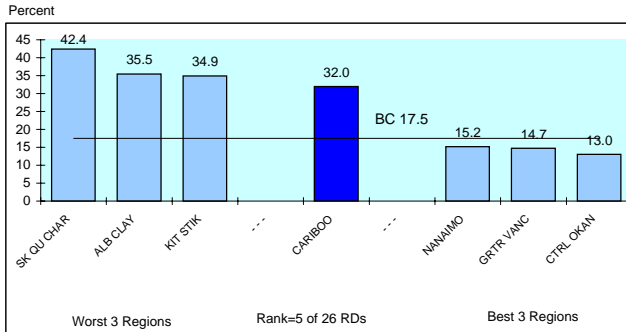
### EDUCATION

	<u>CARIBOO</u>	<u>B.C.</u>
% of 18 Yr Olds Who Did Not Graduate - 2007/08	<b>39.2</b>	<b>26.2</b>
Grade 12 Provincial Exam Non Completion Rate - Avg 2005/06-2007/08		
English	46.8	22.9
Chemistry	88.3	79.3
Math	82.6	65.5
Grade 10 Provincial Exam Non Completion Rate - Avg 2005/06-2007/08		
<b>English</b>	<b>32.0</b>	<b>17.5</b>

#### 18 Year Olds Who Did Not Graduate - 2007/08



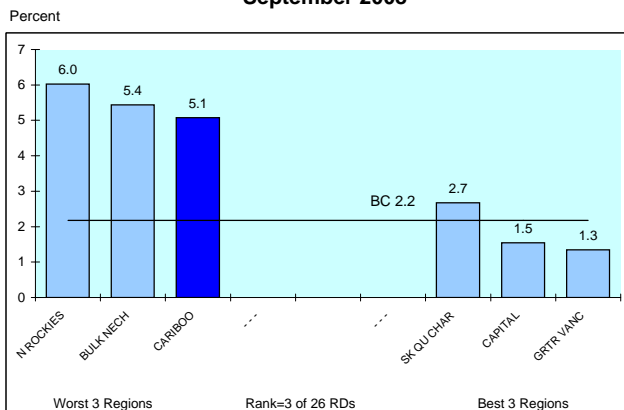
#### Gr. 10 Prov. Exam Non-Completion Rate - English - Avg 2005/06-2007/08



### UNEMPLOYMENT

	<u>CARIBOO</u>	<u>B.C.</u>
Employment Insurance Beneficiaries Age 19-24 - Sept 2008	<b>5.1</b>	<b>2.2</b>

#### Population 19-24 Receiving Employment Insurance September 2008



### OTHER

	<u>CARIBOO</u>	<u>B.C.</u>
Total Juvenile Serious Crime Rate - Avg 2004-2006 (Offences per 1,000 Pop Age 12-17)	6.4	4.5
Non-Cannabis Juvenile Drug Offences - Avg 2004-2006 (Offences per 100,000 Pop Age 12-17)	40.5	47.0
Hospitalization rates from Motor Vehicle Accidents, 2007/08 (Per 1,000 Pop Age 15-24)	<b>4.8</b>	<b>1.7</b>

#### Hospitalization Rates from Motor Vehicle Accidents - 2007/08

Per 1,000 Population Age 15-24

