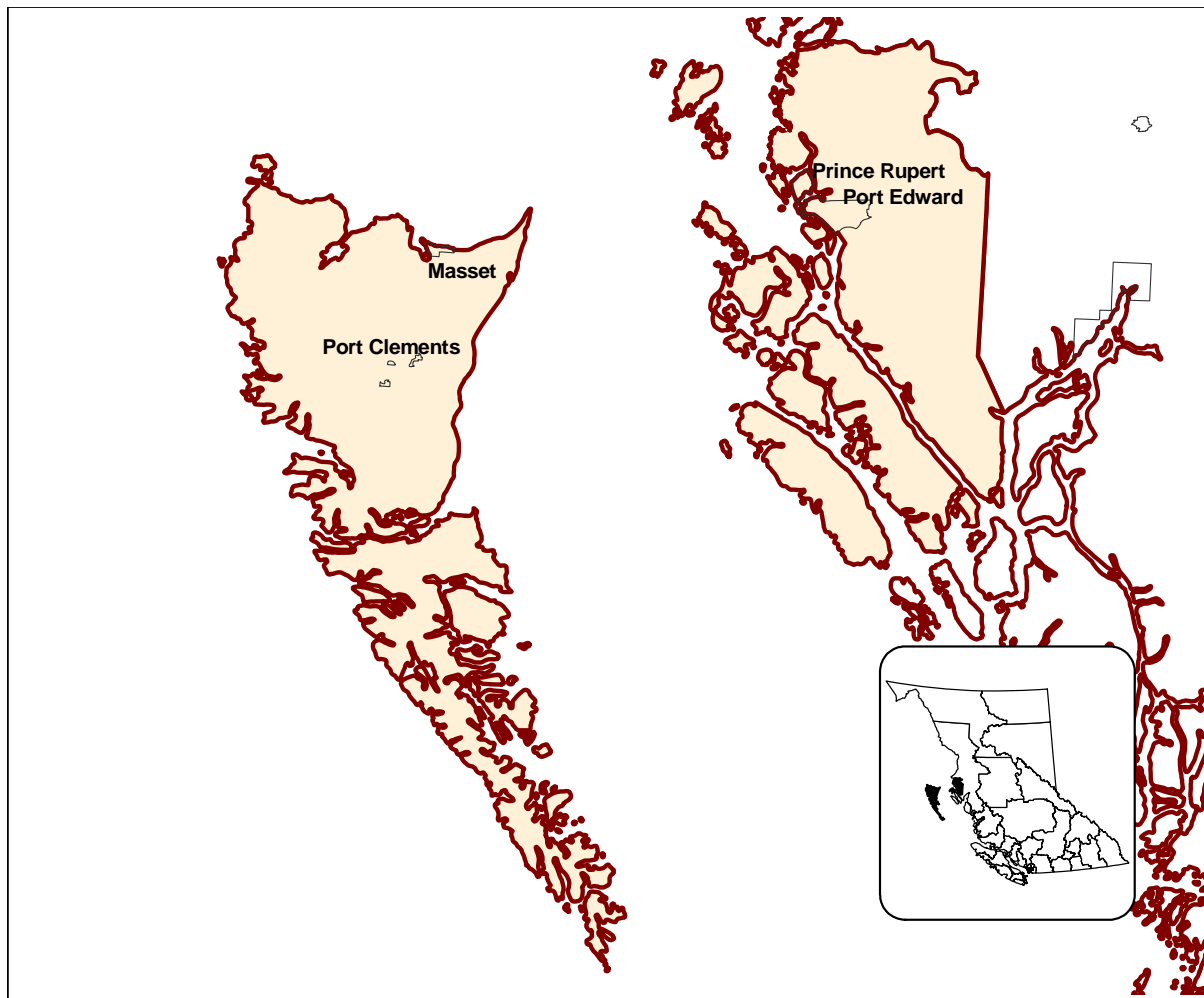


STATISTICAL PROFILE



	2006 CENSUS POPULATION		LAND AREA		POPULATION DENSITY
	Number	% of Region	Sq. Km.	% of Region	Persons per Sq.Km.
Prince Rupert, C	12,815	65.2%	54.9	0.3%	233.4
Masset, VL	940	4.8%	19.4	0.1%	48.3
Port Edward, DM	577	2.9%	168.1	0.8%	3.4
Port Clements, VL	440	2.2%	13.6	0.1%	32.4
Rest of Region	4,892	24.9%	19,615.8	98.7%	0.2
<b>Total Region</b>	<b>19,664</b>	<b>100.0%</b>	<b>19,871.8</b>	<b>100.0%</b>	<b>1.0</b>
Total BC	4,113,487		924,815.4		4.4
<b>Region as a % of BC</b>	<b>0.5%</b>		<b>2.1%</b>		

NOTE: BC Total Land Area for RD's is different to that of LHA's due to different accounting for water bodies.  
Please see the Glossary at <http://www.bcstats.gov.bc.ca/data/sep/index.asp>.

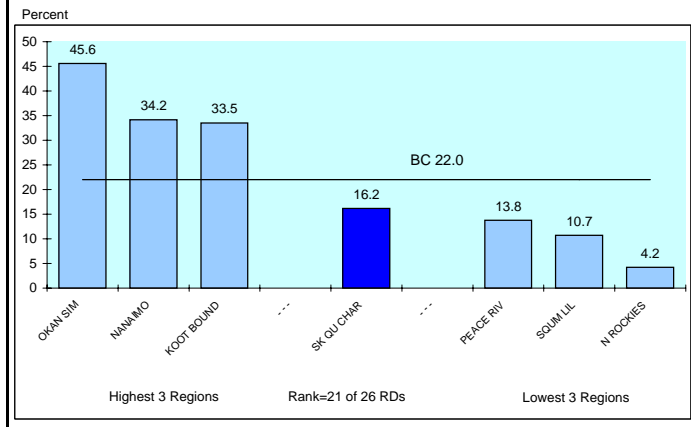
# REGIONAL DISTRICT 47 - SKEENA-QUEEN CHARLOTTE DEMOGRAPHIC PROFILE

2008

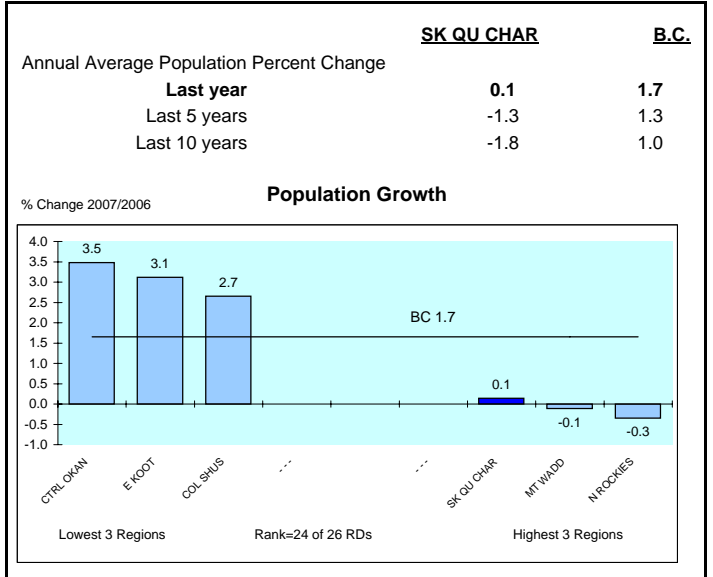
## AGE STRUCTURE

	<u>SK QU CHAR</u>		<u>SK QU CHAR</u>		<u>B.C.</u>	
	2008	2008	2018	2008	2018	2018
Population Estimate			(Percent Distribution)			
0-17 years	4,688	23.9	19.6	19.5	18.0	
18-24 years	1,971	10.0	8.7	9.6	7.8	
25-64 years	10,908	55.5	54.1	56.4	56.1	
65+ years	2,082	10.6	17.6	14.5	18.1	
<b>Total</b>	<b>19,649</b>	<b>100.0</b>	<b>100.0</b>	<b>100.0</b>	<b>100.0</b>	
Dependency Rate (%)						
Child		36.4	31.1	29.5	28.2	
<b>Elderly</b>		<b>16.2</b>	<b>28.0</b>	<b>22.0</b>	<b>28.3</b>	
<b>Total</b>		<b>52.6</b>	<b>59.2</b>	<b>51.5</b>	<b>56.5</b>	

### Elderly Dependency Rate - 2008



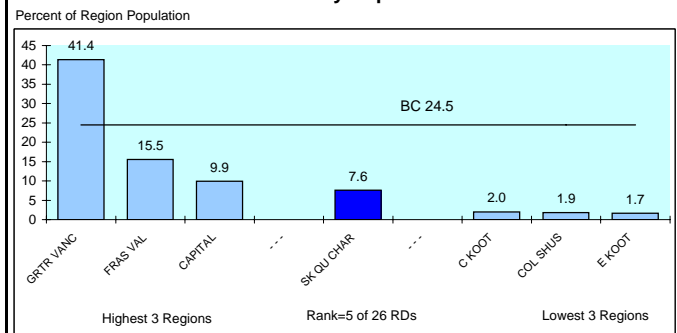
## POPULATION GROWTH



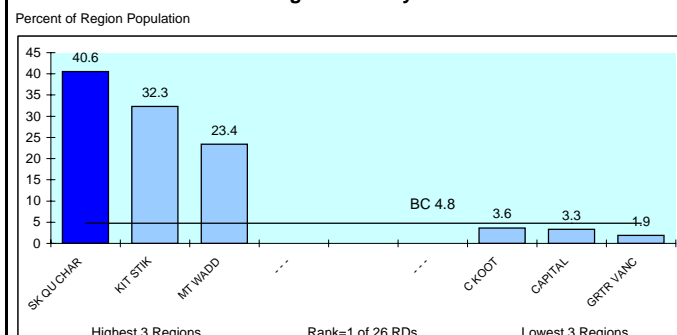
## ETHNIC IDENTITY

	<u>SK QU CHAR</u>	<u>SK QU CHAR</u>	<u>B.C.</u>
		(Percent Distribution)	
2006			
<b>Total Visible Minorities</b>	<b>1,500</b>	<b>7.6</b>	<b>24.5</b>
Single Origins	1,475	7.5	28.1
Chinese	305	1.6	9.9
South Asian	540	2.7	6.4
Filipino	210	1.1	6.4
Japanese	95	0.5	0.9
Other	325	1.7	4.6
Multiple Origins	25	0.1	0.6
<b>Total Aboriginal People</b>	<b>7,980</b>	<b>40.6</b>	<b>4.8</b>
Rest of Population	10,184	51.8	70.7
<b>Total</b>	<b>19,664</b>	<b>100.0</b>	<b>100.0</b>

### Visible Minority Population - 2006



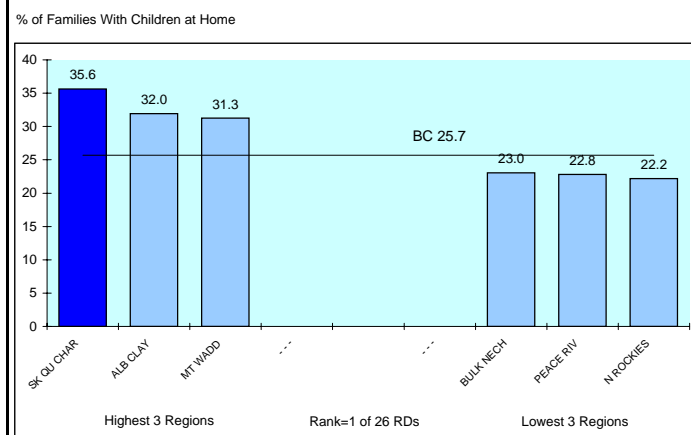
### Aboriginal Identity - 2006



## FAMILY STRUCTURE

	<u>SK QU CHAR</u>	<u>SK QU CHAR</u>	<u>B.C.</u>
		(Percent Distribution)	
Total Census Families - 2006	5,535		
No Children at Home	1,970	35.6	41.3
Children at Home	3,565	64.4	58.7
Families with Children			
Couples	2,295	64.4	74.3
<b>Lone Parents</b>	<b>1,270</b>	<b>35.6</b>	<b>25.7</b>
Avg Number of Children		1.8	1.8
		(% of Total in Economic Families)	
Unattached Individuals	2,855	17.2	17.9

### Lone Parent Families as a % of Families With Children at Home - 2006



## INDICATORS OF ECONOMIC HARDSHIP

### INCOME LEVELS

	<u>SK QU CHAR</u>	<u>B.C.</u>
Average Family Income 2005 (\$) (see Glossary)		
All Census Families	63,248	80,511
Husband/Wife	71,763	86,574
Female Lone Parent	31,808	43,491
Income Distribution Among Families		
< \$20,000	12.4	8.0
\$20,000 - \$79,999	57.8	53.8
\$80,000+	29.7	38.1
Incidence of Low Income in Economic Families	13.8	13.3
Income Inequality Measure	13.8	13.3
<b>Income Share of Bottom Half (poorest) of Households*</b>	<b>21.3</b>	<b>20.7</b>

**Income Share of Poorest Households\* - 2005**

Region	Percent
GRTR VANC	19.6
SK QU CHAR	21.3
CAPITAL	21.4
BC	20.7
KOOT BOUND	23.0
COL SHUS	23.7
N ROCKIES	24.4

3 Most Unequal Regions      Rank=2 of 26 RDs      3 Least Unequal Regions

\* The proportion of each region's household income that accrues to households earning less than the median income. In a situation of perfect equality, the bottom half (poorest) households would receive 50% of the total income.

### HOUSING COSTS

	<u>SK QU CHAR</u>	<u>B.C.</u>
Households (Occupied non-farm non-reserve) - 2006		
% Renting	36.2	30.4
Gross Rent or Major Monthly Payment (\$)		
Tenants	551	828
Owners	784	1059
% Paying 30% or More of Their Income on Housing Costs		
Tenants	31.0	43.4
Owners	17.0	22.7
Total	<b>22.1</b>	<b>29.0</b>

**Households Paying 30% or More on Housing Costs - 2005**

Region	Percent of Households
SQUIM LIL	33.0
GRTR VANC	32.7
FRAS VAL	29.3
SK QU CHAR	22.1
BC	29.0
KIT STIK	17.6
BULK NECH	15.5
N ROCKIES	14.5

Worst 3 Regions      Rank=14 of 26 RDs      Best 3 Regions

### INCOME DEPENDENCY

	<u>SK QU CHAR</u>	<u>B.C.</u>
Composition of Total Income - 2005		
Employment	76.1	77.1
Government Transfers	15.7	9.6
Other	8.3	13.4
Income Dependency 2005		
Forestry	7%	7%
Mining	1%	3%
Construction	3%	8%
Gov't transfer payments	19%	15%
Tourism	9%	6%
Public Sector	31%	26%

**Income Dependency on Forestry, Mining & Fishing\* - 2005**

Region	Percent
N ROCKIES	50.0
BULK NECH	44.0
PEACE RIV	39.0
SK QU CHAR	21.0
BC	11.0
CTRL OKAN	6.0
GRTR VANC	5.0
CAPITAL	2.0

Worst 3 Regions      Rank=12 of 26 RDs      Best 3 Regions

BC data is a Weighted Average of LHAs/RDs

### INCOME ASSISTANCE

	<u>SK QU CHAR</u>	<u>B.C.</u>
% of Population Receiving IA Benefits* - September 2008		
Total (0-64)	9.6	3.8
Children (0-18)	12.7	3.3
Youth (19-24)	9.8	3.0
By Duration		
>1 Year	5.6	2.7
<1 Year	4.0	1.2
% of Income Assistance Caseload that are Single Parent Families*	24.1	13.9
% of Population 19-64 on Income Assistance* and are Employable		
<b>Total</b>	<b>3.7</b>	<b>0.8</b>
By Duration		
>1 Year	1.5	0.3
<1 Year	2.2	0.5
* All Income Assistance recipients include the disabled but exclude Aboriginal persons on reserve.		
% of OAS Recipients Receiving Max. Gov't Income Supp. - 2008		
Total	2.2	3.3
Males	2.4	2.7
Females	2.2	3.3

**% of Population 19-64 Receiving Income Assistance\* and are Employable - September 2008**

Region	Percent of Population 19-65
SK QU CHAR	3.7
KIT STIK	2.5
ALB CLAY	2.0
BC	0.8
E KOOT	0.5
N ROCKIES	0.3
SQUIM LIL	0.2

Worst 3 Regions      Rank=1 of 26 RDs      Best 3 Regions

\*Heavy dependency on the primary sector increases the vulnerability of a region to swings in the economic cycle resulting in economic hardship

## INDICATORS OF LABOUR MARKET ISSUES

### LABOUR DEMAND

	<u>SK QU CHAR</u>	<u>B.C.</u>
Labour Force 2006		
Industrial Structure (% Distribution)		
Goods		
Primary	11.4	4.4
Manufacturing	5.0	7.6
Construction	9.3	8.6
Services	65.4	74.4
Non-Government	8.9	5.0
Government	100.0	100.0
Occupational Structure (% Distribution)		
Management:	8.2	10.5
Professional Occupations in:		
Business & Finance	1.0	2.5
Natural & Applied Sciences	1.1	1.5
Health	1.4	3.4
Social sciences (excl. teachers)	4.4	2.9
Teachers	1.8	2.7
Art & Culture	1.4	1.3
<b>Total</b>	<b>11.2</b>	<b>14.4</b>
Technical Trades & Assorted Other High Skilled Occupations in:		
Finance & Insurance Admin.	1.4	2.2
Techs In Natural & Appl. Sciences	4.7	3.7
Techs. In Health	2.7	2.2
Paraprofs. in Soc Sci Educ etc	0.7	1.5
Techs in Art Culture & Rec.	1.7	2.0
Skilled Sales & Service	4.0	4.7
Trades & Skilled Transp & Equip Ops.	12.7	12.8
<b>Total</b>	<b>27.9</b>	<b>29.1</b>
Intermediate & Lesser Skilled Occups*	52.8	46.0

\* High Skilled Occupations in Primary Manufacturing and Protective Services could not be separated out so are included in Intermediate & Lesser Skilled Occupations.

### LABOUR SUPPLY

	<u>SK QU CHAR</u>	<u>B.C.</u>
% of Population 20+ With Post Secondary Qualifications - 2006		
Total	47.7	61.8
With Post Secondary Certificate or Diploma	30.4	31.5
<b>With University Degree</b>	<b>13.8</b>	<b>24.1</b>
% Distribution by Field of Study		
Educational, Recreational & Counselling	11.1	7.5
Fine & Applied Arts	2.4	4.2
Humanities & Related	4.6	5.6
Social Sciences & Related	7.0	10.5
Commerce, Managmnt & Business Admin	16.3	21.0
Agricultural & Biological Sciences/Tech	3.8	3.5
Engineering & Applied Sciences	3.5	4.1
Engineering & Applied Science Tech/Trades	25.5	21.1
Health Professions, Sciences & Tech	11.4	14.2
Mathematics & Physical Sciences	9.2	5.5
No Specialization & All Other n.e.c	4.9	2.6
<b>Total</b>	<b>99.8</b>	<b>100.0</b>

% of Population 20+ With a University Degree - 2006	
Region	Percent
N/ROOKIES	9.5
ALB CLAY	10.0
PEACE RIV	10.2
SK QU CHAR	13.8
SQUIM LIL	20.6
CAPITAL	29.0
GRTR VANC	30.7

BC 24.1

Worst 3 Regions      Rank=14 of 26 RDs      Best 3 Regions

### UNEMPLOYMENT

	<u>SK QU CHAR</u>	<u>B.C.</u>
Employment Insurance Beneficiaries Sept. 2008		
Total Beneficiaries 19-64 Years of Age	461	69,154
Percent Female	51.2	63.6
Percent 19-24 Years Old	9.5	11.4
Total Beneficiaries as a Percent of Population 19-64		
Sep /08	3.7	2.4
Jun /08	4.8	2.5
Mar /08	9.5	2.9
Dec /07	9.4	3.1
Sep /07	4.1	2.2
<b>Most recent 4 quarter average</b>	<b>6.8</b>	<b>2.8</b>

EI Beneficiaries - 4 Quarter Average to September 2008	
Region	% of Population 19-64
SK QU CHAR	6.8
BULK MECH	6.4
KIT STIK	5.3
GRTR VANC	2.1
SUNSH CST	2.1
CAPITAL	1.9

BC 2.8

Worst 3 Regions      Rank=1 of 26 RDs      Best 3 Regions

### OTHER

	<u>SK QU CHAR</u>	<u>B.C.</u>
Labour Force 2006		
Participation Rate		
Males	71.7	70.7
Females	65.6	60.7
Total	68.7	65.6
% Full Year, Full Time Workers	36.4	46.5
% Self Employed	10.9	14.1
<b>Average Employment Income (\$) - 2005</b>	<b>28,785</b>	<b>34,978</b>
Average Employment Income of Full-Year Full-Time Workers (\$)		
Males	51,045	57,772
Females	37,324	41,073
Ratio of Female to Male Income	73.1	71.1

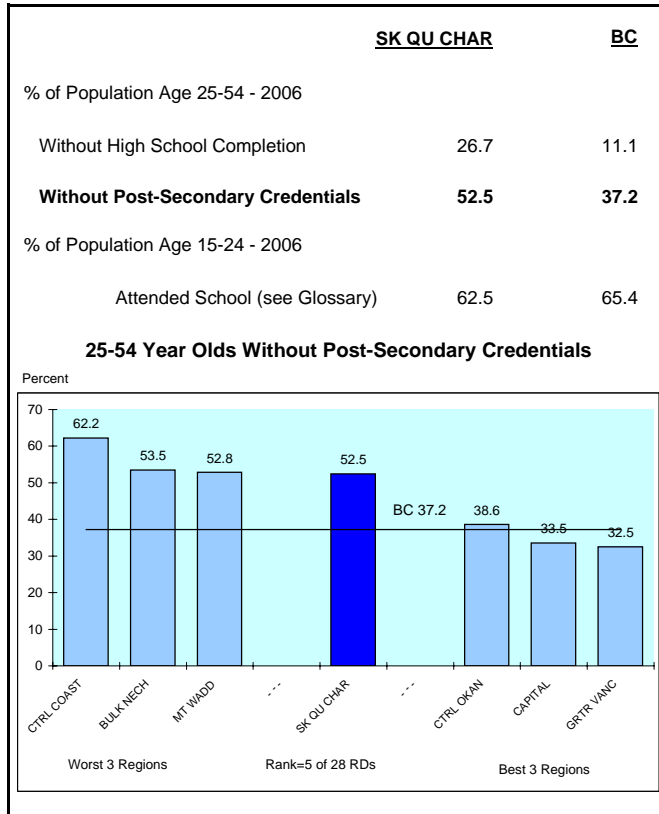
Average Employment Income (\$) - 2005	
Region	Dollars
CKROOT	27,766
OKAN SIM	27,820
ALB CLAY	28,388
SK QU CHAR	28,785
GRTR VANC	37,627
PEACE RIV	39,232
N/ROOKIES	47,674

BC 34,978

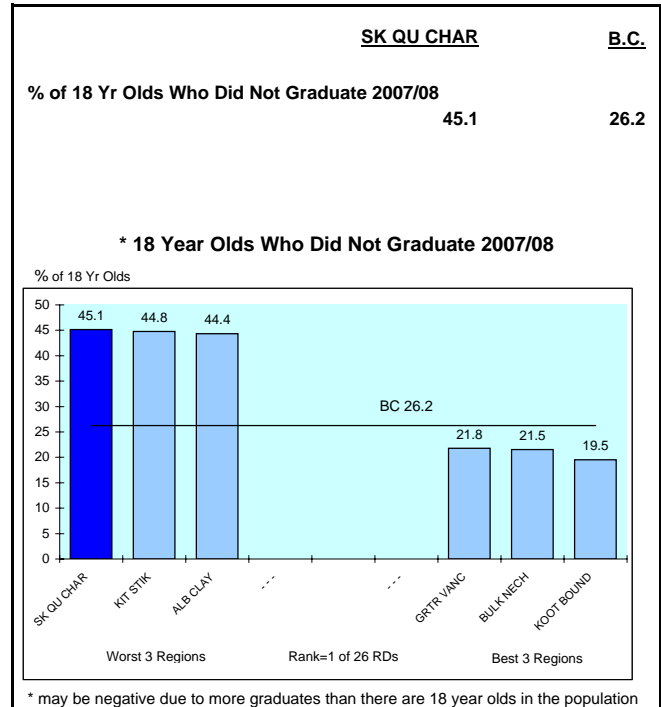
Worst 3 Regions      Rank=5 of 26 RDs      Best 3 Regions

## INDICATORS OF EDUCATION CONCERNS

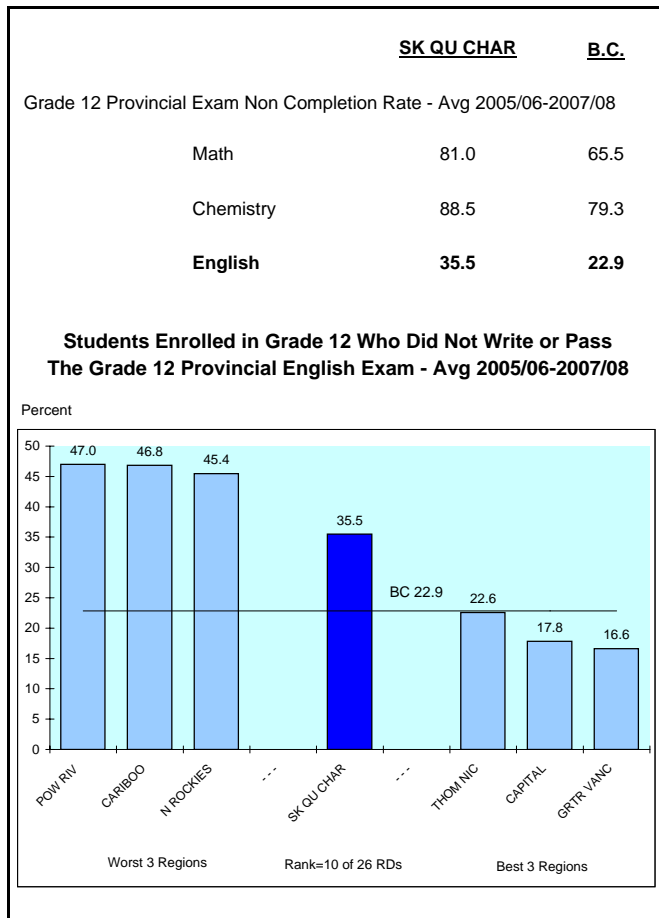
### GENERAL EDUCATION



### HIGH SCHOOL



### PROVINCIAL EXAMS



### TEST SCORES



## INDICATORS OF CRIME

### SERIOUS CRIME

**SK QU CHAR** **B.C.**

Serious Crime Rate - Avg 2004-2006

Violent	2.9	3.1
Property	13.0	11.7
Total Serious	15.8	14.8

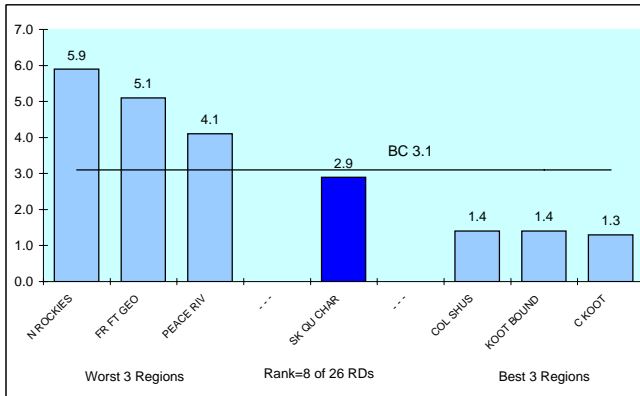
Number of Serious Crimes Per Police Officer 6.9 10.9

Serious Juvenile (Age 12-17) Crime Rate - Avg 2004-2006

Violent	3.9	2.5
Property	6.9	2.0
Total Serious	10.8	4.5

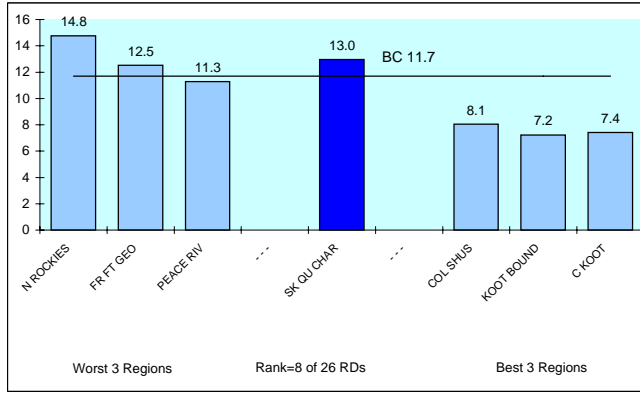
#### Serious Violent Crime Rate - 2004-2006

Offences per 1,000 Population



#### Serious Property Crime Rate - 2004-2006

Offences per 1,000 Population



### OTHER INDICATORS OF CRIME

**SK QU CHAR** **B.C.**

Crime Rate - Avg 2004-2006

Motor Vehicle Theft	2.0	8.0
---------------------	-----	-----

### CHANGE IN CRIME RATE

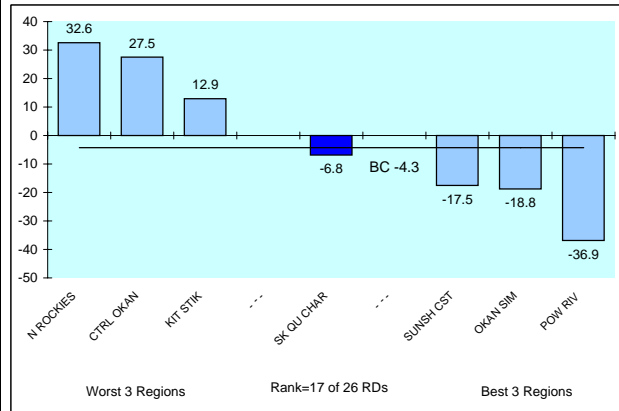
**SK QU CHAR** **B.C.**

Change in Serious Crime Rate - Avg 2004-06 / Avg 2001-03

Violent	-34.1	8.0
Property	2.9	-7.1
Total Serious	-6.8	-4.3

#### Change in Total Serious Crime Rate

% Change Avg 04-06/Avg 01-03



### SERIOUS DRUG CRIME

**SK QU CHAR** **B.C.**

Indicators of Serious Drug Crime - Avg 2004-2006

**Non-Cannabis Drug Offences 378.2 225.9**

(Offences per 100,000 Pop)

**Juvenile (12-17) Non-Cannabis Drug Charges 33.6 47.0**

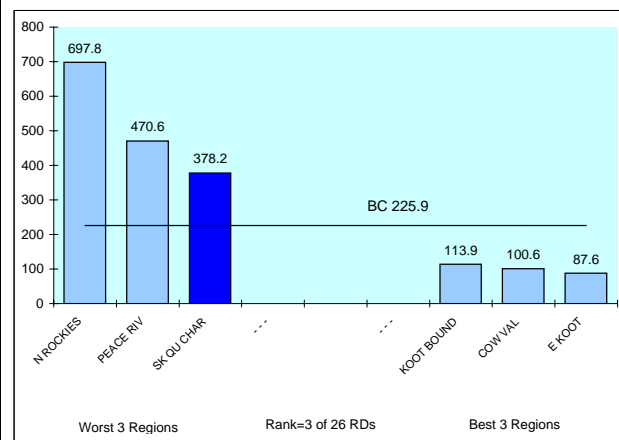
(Charges per 100,000 Pop Age 12-17)

**Illicit Drug Deaths - Avg 2005-2007 7.5 7.2**

(Deaths per 100,000 Pop Age 19-64)

#### Non-Cannabis Drug Offences - Avg 2004-2006

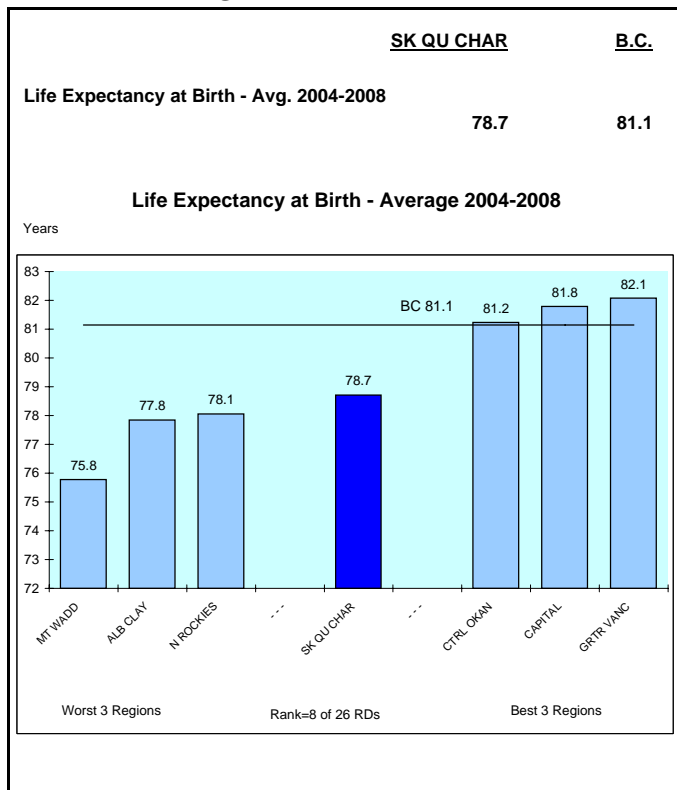
Offences per 100,000



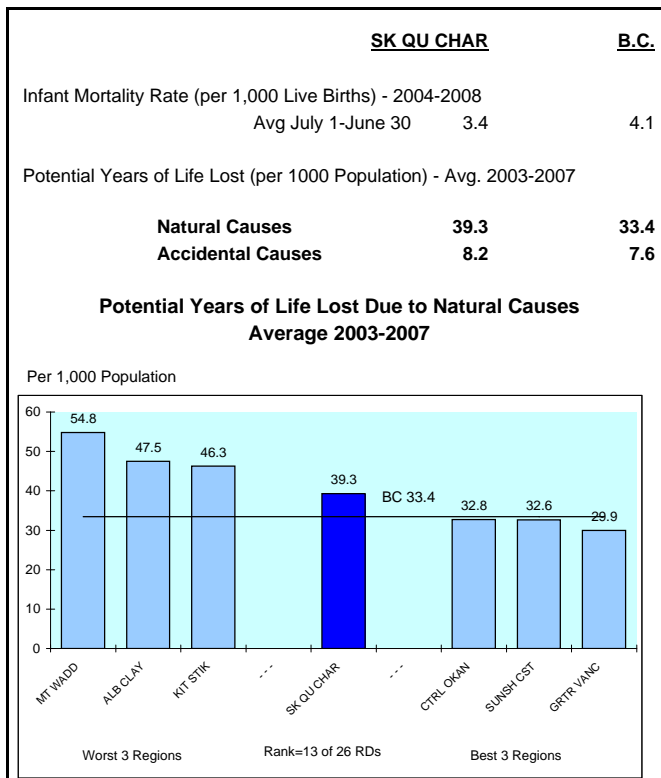
NOTE: Crime Rate = # of Offences(Charges for Juveniles) Per 1,000 Population unless otherwise noted.

## INDICATORS OF HEALTH PROBLEMS

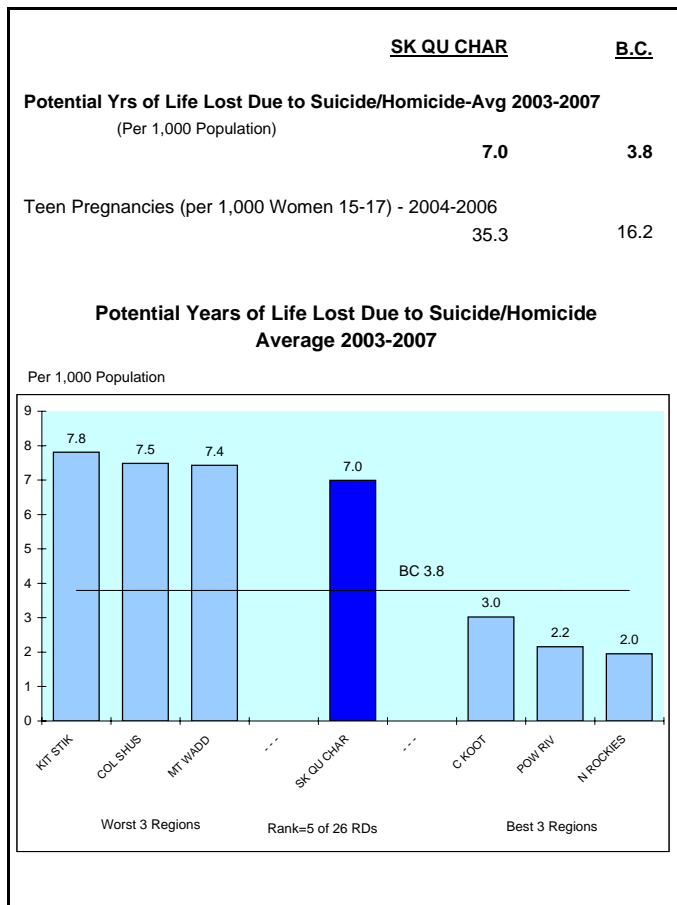
### GENERAL HEALTH



### PHYSICAL HEALTH

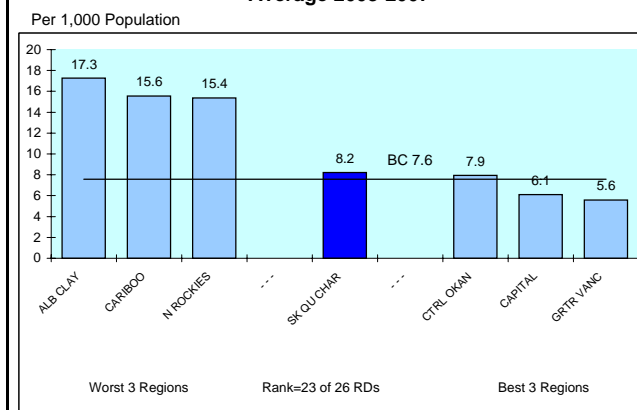


### MENTAL HEALTH



### Potential Years of Life Lost Due to Accidental Causes

Average 2003-2007



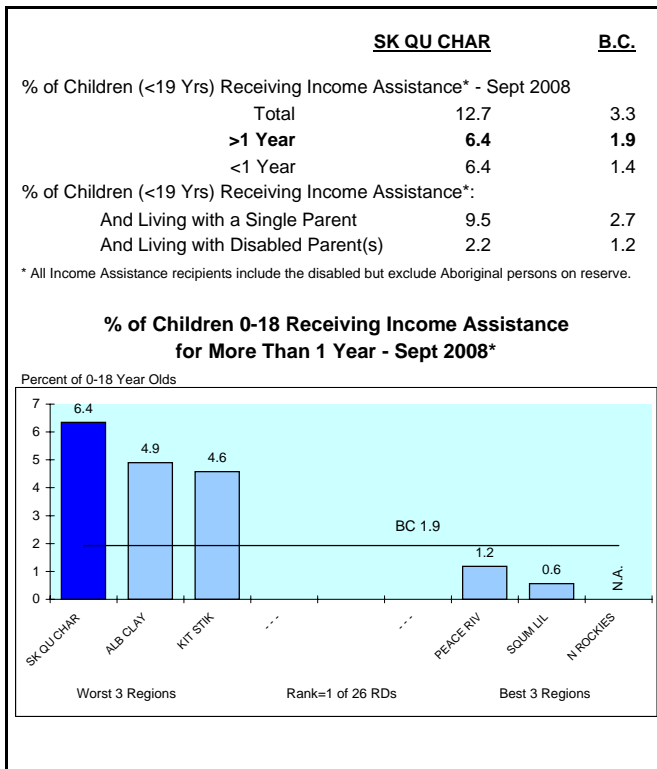
### ALCOHOL SALES\*

	SK QU CHAR	B.C.
<b>Per Capita Alcohol Sales - 2008</b> (Per Population Age 19+)		
Dollars Spent (\$)	1113	805
Litres Consumed	175	112
<b>% Distribution of Litres Sold</b>		
Spirits	6.2	6.5
Wine	9.6	14.5
Beer/Cider/Coolers	84.2	78.9

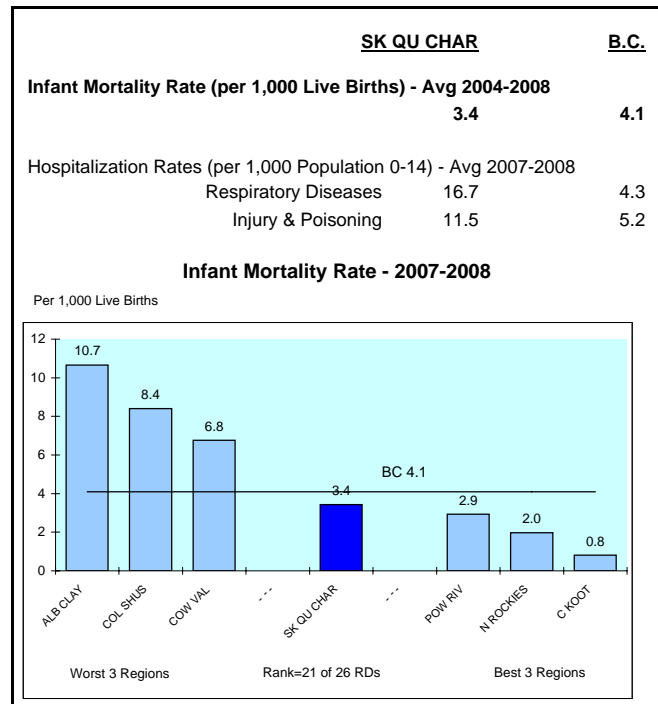
\* Represents sales per resident population 19+, therefore high tourist areas will be overstated

## INDICATORS OF CHILDREN AT RISK

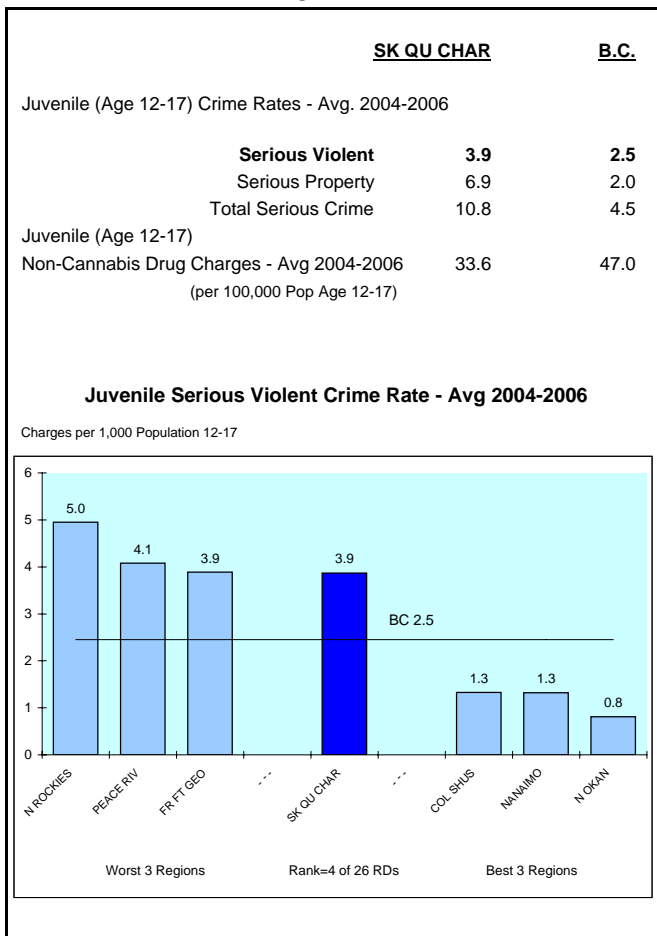
### INCOME ASSISTANCE



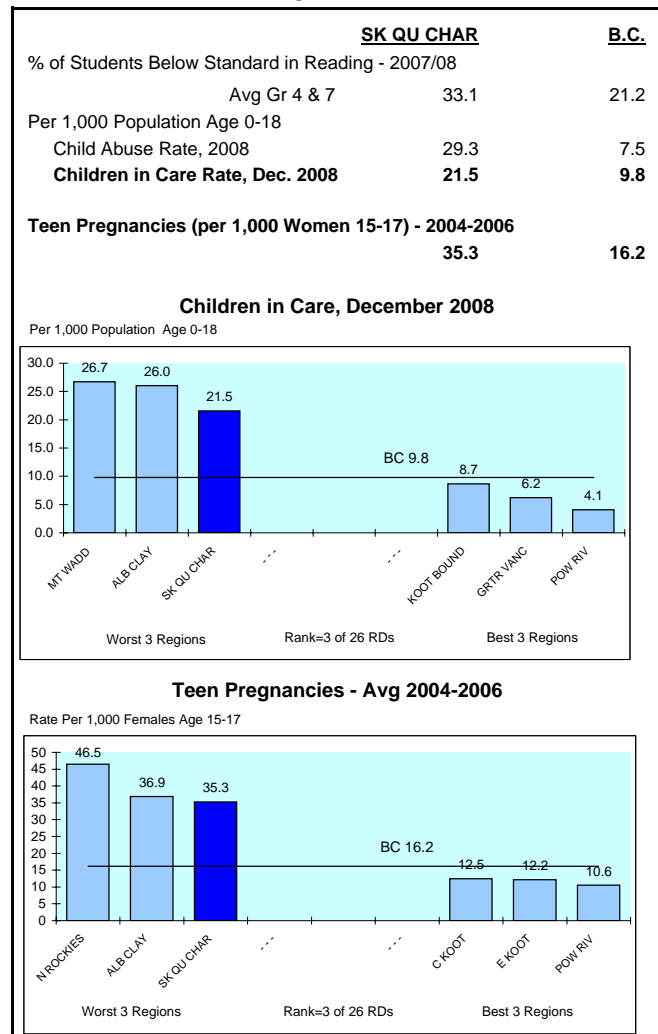
### HEALTH



### CRIME

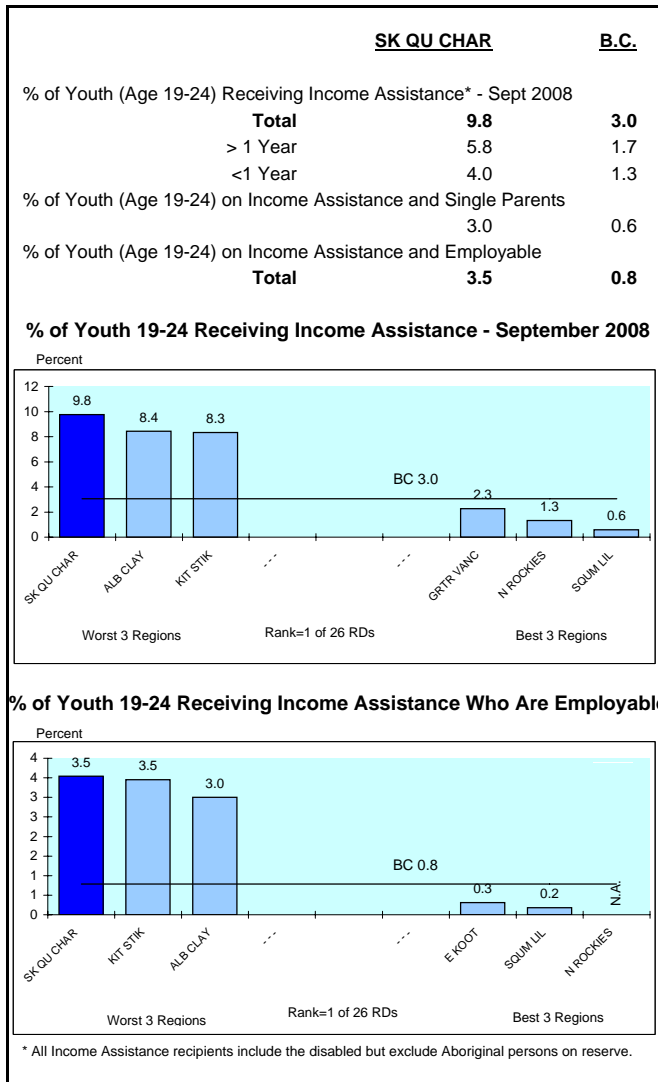


### OTHER

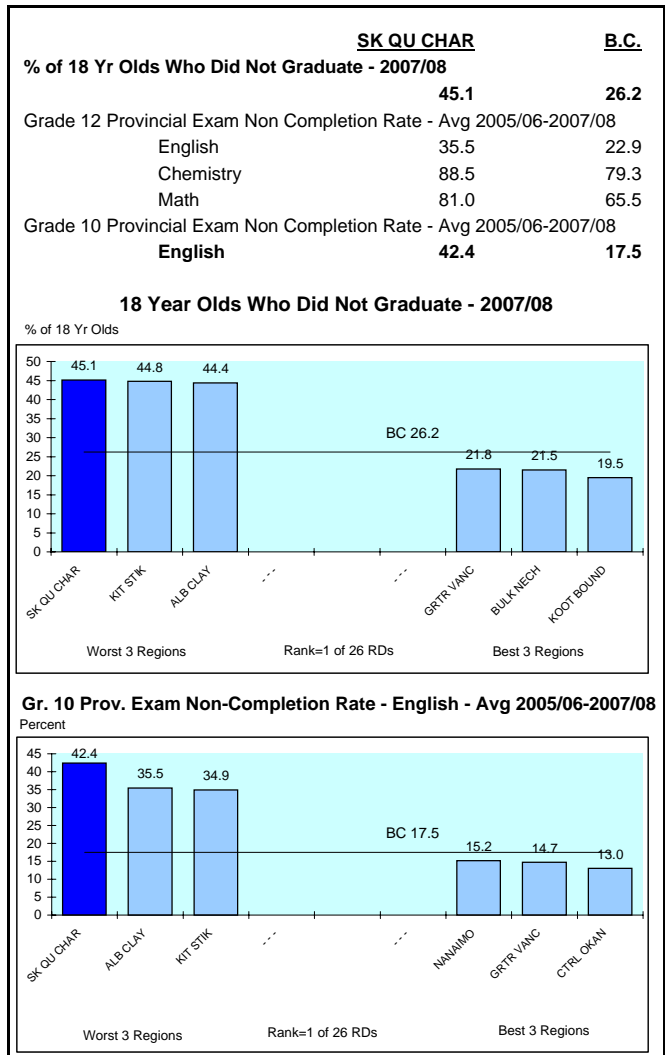


## INDICATORS OF YOUTH AT RISK

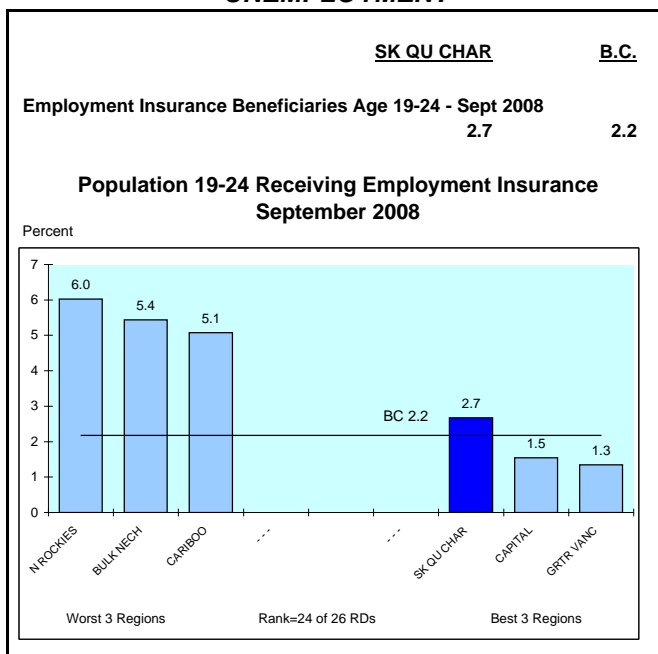
### INCOME ASSISTANCE



### EDUCATION



### UNEMPLOYMENT



### OTHER

