

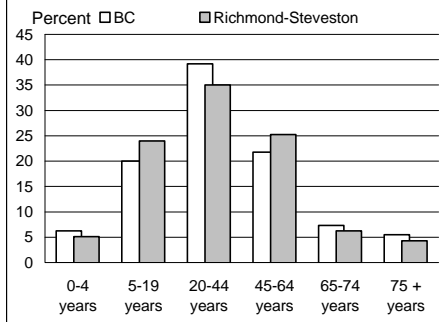
# Richmond-Steveston

Provincial Electoral District (PED)

## Population by Age Group

	Richmond-Steveston	BC
<b>Total population</b> (as of May 14, 1996)	42,432	3,724,500
Percent of BC	1.1	100.0
<b>Aged 20+ years</b>	30,035	2,745,785
Percent of total population	70.8	73.7

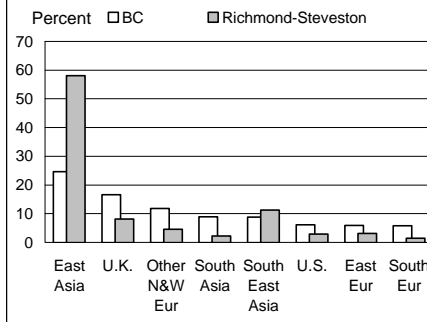
### Population by Age Group



## Immigrant Population

	Richmond-Steveston	BC
<b>Non-Immigrants</b>	23,455	2,756,530
% born in BC	67.9	63.2
% born other provinces	31.9	36.8
<b>Immigrants</b>	18,195	903,190
% of population	42.9	24.2

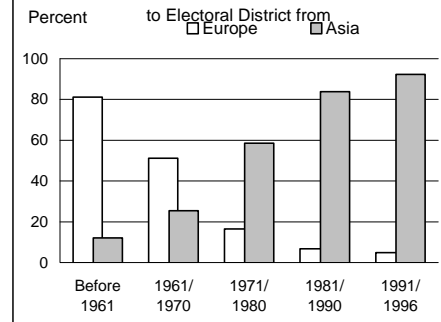
### Birthplace of Immigrant Population



## Changing Face of Immigrants

	Richmond-Steveston	BC
<b>Ever immigrants</b>	18,195	903,190
% born in Europe	17.8	40.1
% born in Asia	72.7	44.4
<b>Immigrants since 1981</b>	12,225	402,475
% born in Europe	5.6	16.0
% born in Asia	88.9	69.8

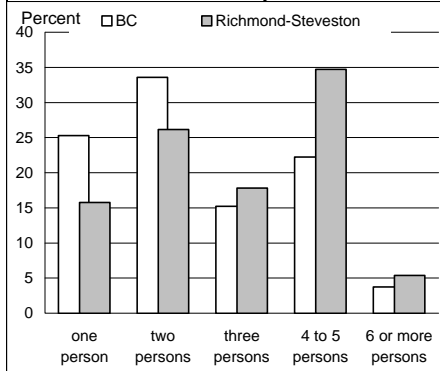
### Percent of Immigrants from Europe and Asia



## Private Households

	Richmond-Steveston	BC
<b>Total private households</b>	13,720	1,424,635
% single person h'sholds	22.7	38.9
<b>Total families</b>	11,610	1,008,440
% with children	72.2	60.8
% lone parent family	11.6	13.8

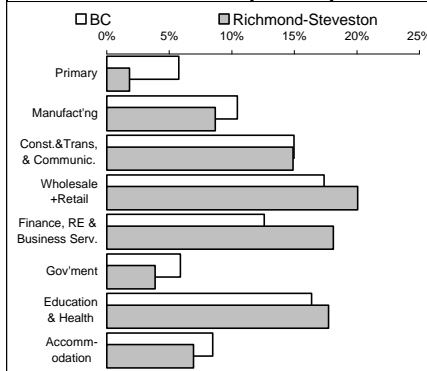
### Households by Size



## Experienced Labour Force

	Richmond-Steveston	BC
Population 15+ years	33,545	2,954,700
<b>Labour force</b>	21,150	1,960,665
Participation rate	63.0	66.4
Unemployment rate	6.7	9.6
Males	6.7	9.8
Females	6.0	9.2

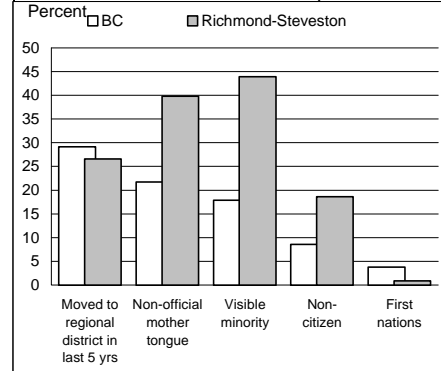
### Labour Force by Industry



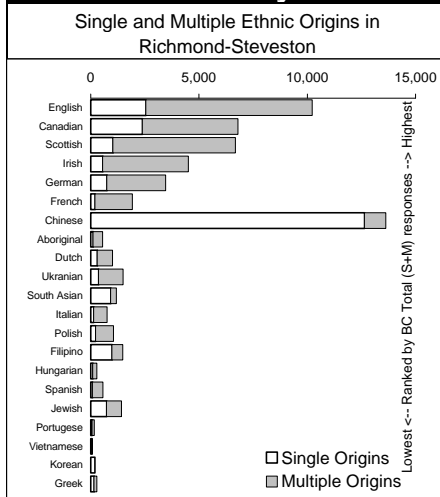
## Education & Social Groups

	Richmond-Steveston	BC
<b>% of population 15+ yrs having attained . . .</b>		
Less than high school grad.	25.9	31.1
High school graduation	12.8	12.9
Trade certificate	2.4	3.5
Some university	14.1	11.9
University degree	20.4	13.6

### Selected Social Groups



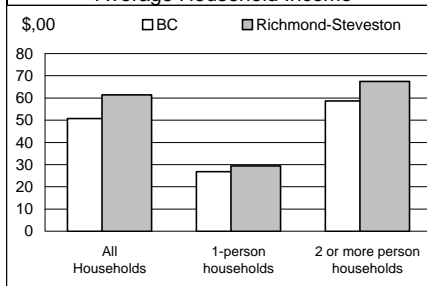
## Ethnicity



## Income

	Richmond-Steveston	BC
<b>Average Total Income</b>		
All 15 yrs+ with income	\$28,054	\$26,295
Males	\$35,144	\$32,457
Females	\$21,319	\$20,028
<b>Avg. Employment Income</b>	\$29,965	\$27,480

### Average Household Income



## Election Results

<b>General election May 28, 1996</b>	
Winning party and margin	<b>LIB 4,602</b>
Registered voters	23,006
Percent who voted	74.36

<b>Previous election</b>	
Winning party and margin	<b>LIB 610</b>

### Results of general election May 28, 1996

	Party	Votes
Geoff Plant	LIB	9,643
Gail Paquette	NDP	5,041
Pat Young	PDA	919
Shirley Abraham-Kirk	RP	556
Allan Warnke	IND	450
Brian Gold	GP	188
Gary Cross	CP	99
Gordon Neuls	SC	88
Nancy Stewart	NLP	38

This report is derived by summing data for Federal Electoral District enumeration areas (FED EAs) that constitute the Provincial Electoral District. EAs crossing PED boundaries are judged to be in only one PED. Since data for a number of FED EAs is suppressed and data for all others is randomly rounded to preserve privacy of individuals, PED figures here will not match data published elsewhere that have been rounded after first aggregating unsuppressed and unrounded FED EA data.