

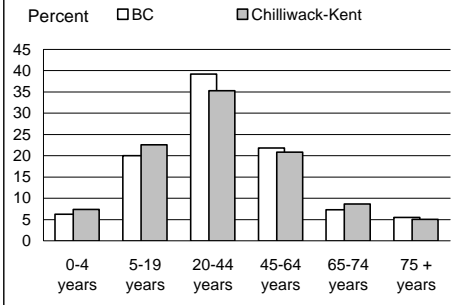
1996 Census Profile  
**Chilliwack-Kent**  
 Provincial Electoral District

11

**Population by Age Group**

	Chilliwack-Kent	BC
<b>Total population</b>		
(as of May 14, 1996)	43,323	3,724,500
Percent of BC	1.2	100.0
<b>Aged 20+ years</b>	30,295	2,746,395
Percent of total population	69.9	73.7

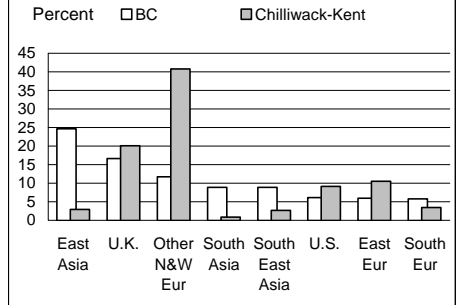
**Population by Age Group**



**Immigrant Population**

	Chilliwack-Kent	BC
<b>Non-Immigrants</b>	35,055	2,756,530
% born in BC	62.4	63.2
% born other provinces	37.5	36.8
<b>Immigrants</b>	6,155	903,190
% of population	14.2	24.2

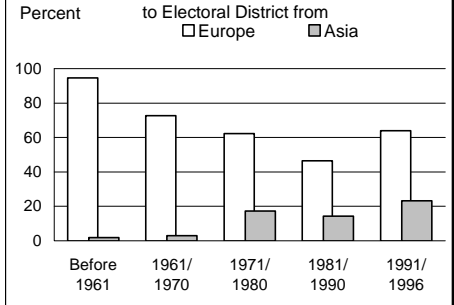
**Birthplace of Immigrant Population**



**Changing Face of Immigrants**

	Chilliwack-Kent	BC
<b>Ever immigrants</b>	6,155	903,190
% born in Europe	74.7	40.1
% born in Asia	7.4	44.4
<b>Immigrants since 1981</b>	1,410	402,475
% born in Europe	53.2	16.0
% born in Asia	17.7	69.8

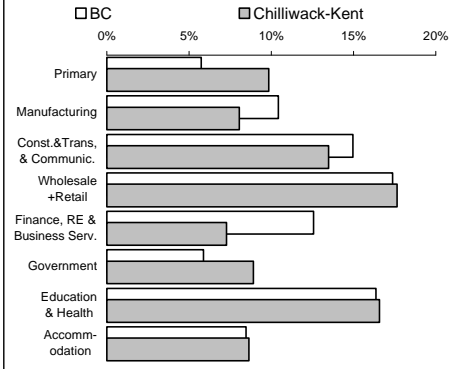
**Percent of Immigrants from Europe and Asia**



**Experienced Labour Force**

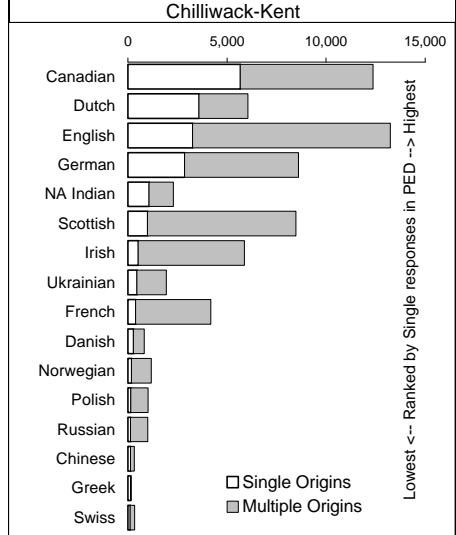
	Chilliwack-Kent	BC
Population 15+ years	31,980	2,954,705
<b>Labour force</b>	20,305	1,960,665
Participation rate	63.5	66.4
Unemployment rate	9.7	9.6
Males	9.9	9.8
Females	9.7	9.2

**Labour Force by Industry**



**Ethnicity**

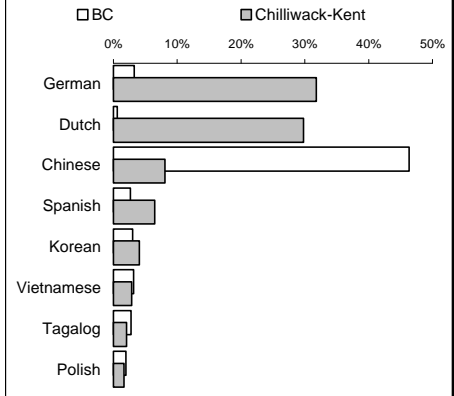
**Single and Multiple Ethnic Origins in Chilliwack-Kent**



**Home Language**

	Chilliwack-Kent	BC
<b>% reporting home language . . .</b>		
Single response (one language)	99.2	98.0
English	95.7	85.4
Non-official (see chart)	2.8	12.1
Multiple response	0.8	2.0

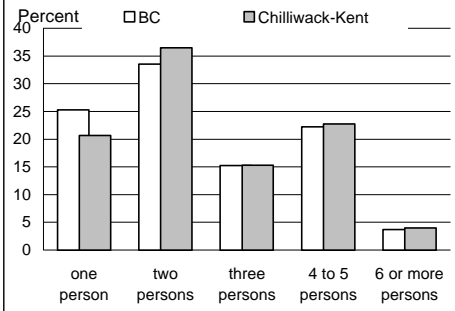
**Single Non-official Home Language (Distribution)**



**Private Households**

	Chilliwack-Kent	BC
<b>Total private households</b>	15,615	1,424,635
% single person h'seholds	20.7	25.3
<b>Total families</b>	11,790	1,008,440
% with children	58.7	60.8
% lone parent family	14.5	13.8

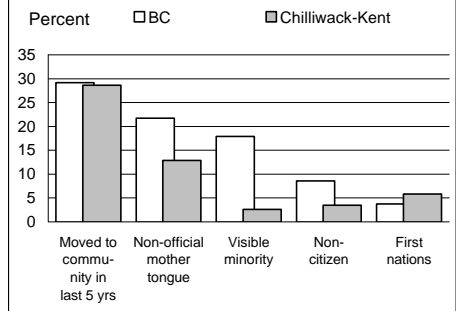
**Households by Size**



**Education & Social Groups**

	Chilliwack-Kent	BC
<b>% of population 15+ yrs having attained . . .</b>		
Less than high school grad.	36.2	31.1
High school graduation	13.8	12.9
Trade certificate	4.1	3.5
Some university	10.6	11.9
University degree	7.1	13.6

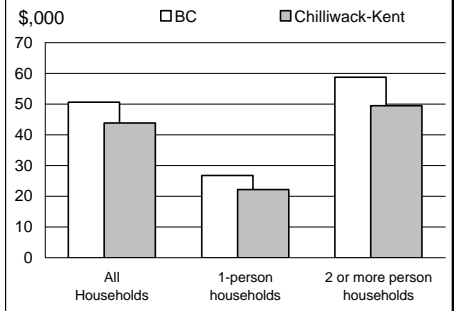
**Selected Social Groups**



**Income**

	Chilliwack-Kent	BC
<b>Average Total Income</b>		
All 15 yrs+ with income	\$23,107	\$26,295
Males	\$29,181	\$32,457
Females	\$16,836	\$20,028
<b>Avg. Employment Income</b>	\$24,041	\$27,480

**Average Household Income**



This report is derived by summing data for Federal Electoral District enumeration areas (FED EAs) that constitute the Provincial Electoral District (PED). EAs crossing PED boundaries are allocated to only one PED. Since data for a number of FED EAs

is suppressed and data for all others is randomly rounded to preserve privacy of individuals, the sum of data for all PEDs will not total to BC figures here that have been rounded after first aggregating unsuppressed and unrounded FED EA data.