

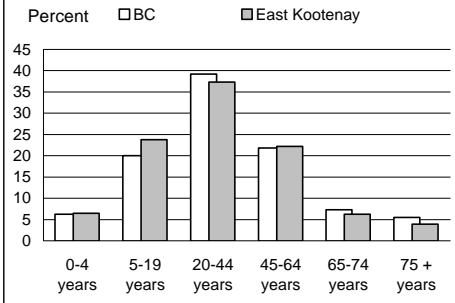
1996 Census Profile
East Kootenay
 Provincial Electoral District

19

Population by Age Group

	East Kootenay	BC
Total population		
(as of May 14, 1996)	38,222	3,724,500
Percent of BC	1.0	100.0
Aged 20+ years	26,605	2,746,395
Percent of total population	69.6	73.7

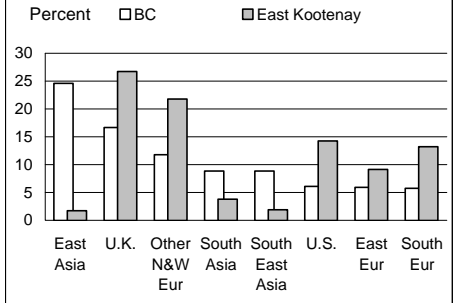
Population by Age Group



Immigrant Population

	East Kootenay	BC
Non-Immigrants	34,285	2,756,530
% born in BC	59.4	63.2
% born other provinces	40.5	36.8
Immigrants	3,440	903,190
% of population	9.0	24.2

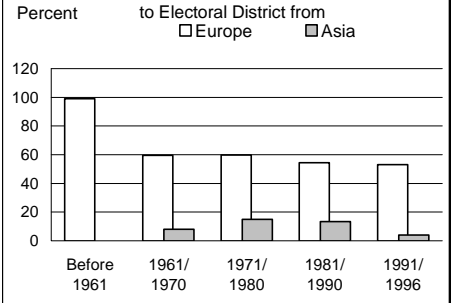
Birthplace of Immigrant Population



Changing Face of Immigrants

	East Kootenay	BC
Ever immigrants	3,440	903,190
% born in Europe	70.3	40.1
% born in Asia	7.6	44.4
Immigrants since 1981	695	402,475
% born in Europe	54.0	16.0
% born in Asia	10.1	69.8

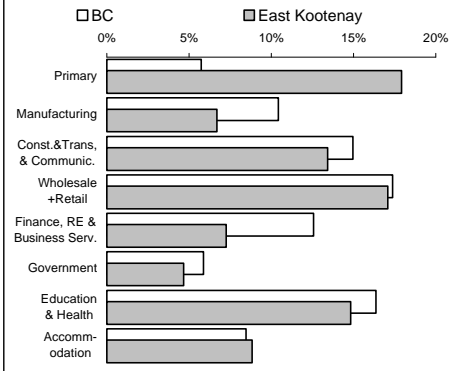
Percent of Immigrants from Europe and Asia



Experienced Labour Force

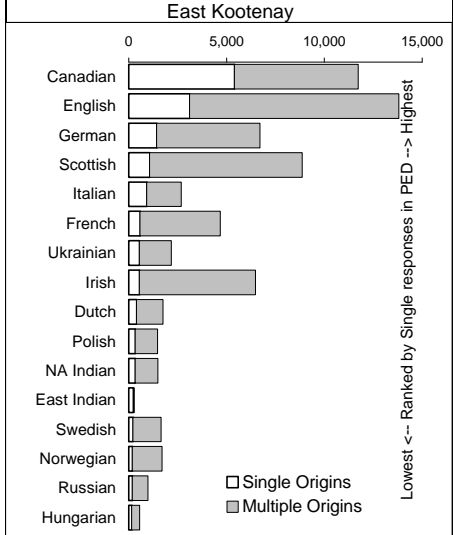
	East Kootenay	BC
Population 15+ years	29,325	2,954,705
Labour force	20,030	1,960,665
Participation rate	68.3	66.4
Unemployment rate	11.4	9.6
Males	12.3	9.8
Females	10.1	9.2

Labour Force by Industry



Ethnicity

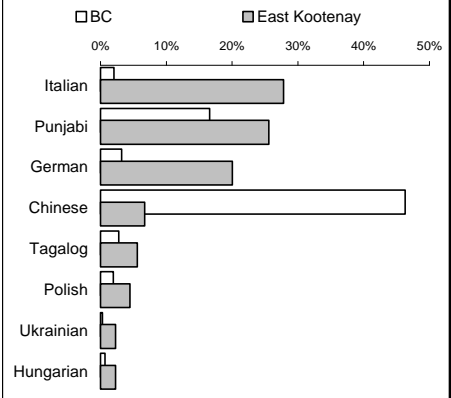
Single and Multiple Ethnic Origins in East Kootenay



Home Language

	East Kootenay	BC
% reporting home language . . .		
Single response (one language)	99.2	98.0
English	96.2	85.4
Non-official (see chart)	1.8	12.1
Multiple response	0.8	2.0

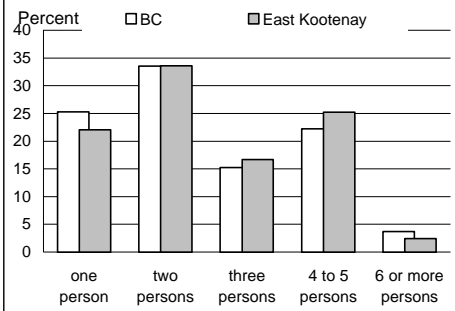
Single Non-official Home Language (Distribution)



Private Households

	East Kootenay	BC
Total private households	14,420	1,424,635
% single person h'seholds	22.1	25.3
Total families	10,765	1,008,440
% with children	62.1	60.8
% lone parent family	12.9	13.8

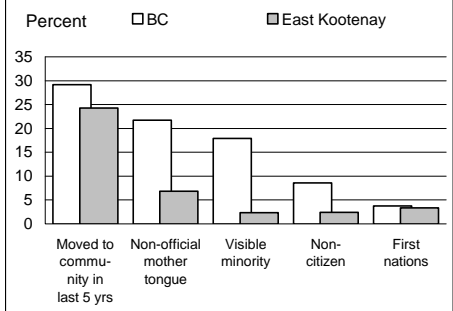
Households by Size



Education & Social Groups

	East Kootenay	BC
% of population 15+ yrs having attained . . .		
Less than high school grad.	33.5	31.1
High school graduation	13.6	12.9
Trade certificate	4.7	3.5
Some university	9.0	11.9
University degree	7.7	13.6

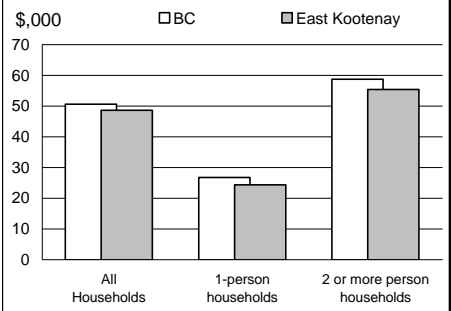
Selected Social Groups



Income

	East Kootenay	BC
Average Total Income		
All 15 yrs+ with income	\$25,909	\$26,295
Males	\$34,216	\$32,457
Females	\$16,864	\$20,028
Avg. Employment Income	\$27,014	\$27,480

Average Household Income



This report is derived by summing data for Federal Electoral District enumeration areas (FED EAs) that constitute the Provincial Electoral District (PED). EAs crossing PED boundaries are allocated to only one PED. Since data for a number of FED EAs is suppressed and data for all others is randomly rounded to preserve privacy of individuals, the sum of data for all PEDs will not total to BC figures here that have been rounded after first aggregating unsuppressed and unrounded FED EA data.