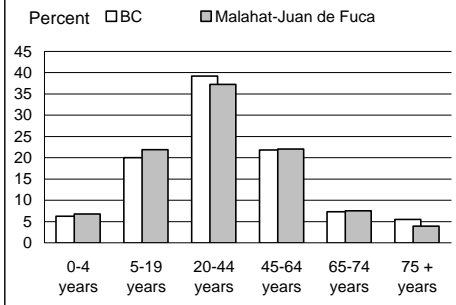


Population by Age Group

	Malahat-Juan de Fuca	BC
Total population (as of May 14, 1996)	47,335	3,724,500
Percent of BC	1.3	100.0
Aged 20+ years	33,495	2,746,395
Percent of total population	70.8	73.7

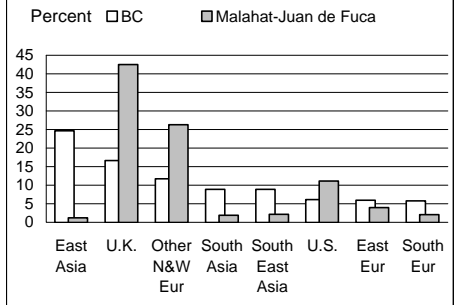
Population by Age Group



Immigrant Population

	Malahat-Juan de Fuca	BC
Non-Immigrants	40,005	2,756,530
% born in BC	61.8	63.2
% born other provinces	38.3	36.8
Immigrants	6,450	903,190
% of population	13.6	24.2

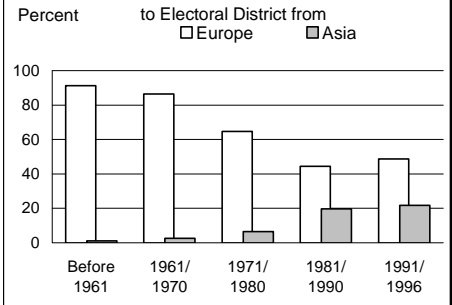
Birthplace of Immigrant Population



Changing Face of Immigrants

	Malahat-Juan de Fuca	BC
Ever immigrants	6,450	903,190
% born in Europe	76.0	40.1
% born in Asia	6.9	44.4
Immigrants since 1981	1,285	402,475
% born in Europe	46.3	16.0
% born in Asia	20.6	69.8

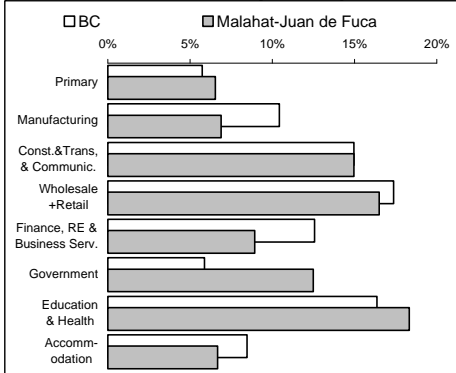
Percent of Immigrants from Europe and Asia



Experienced Labour Force

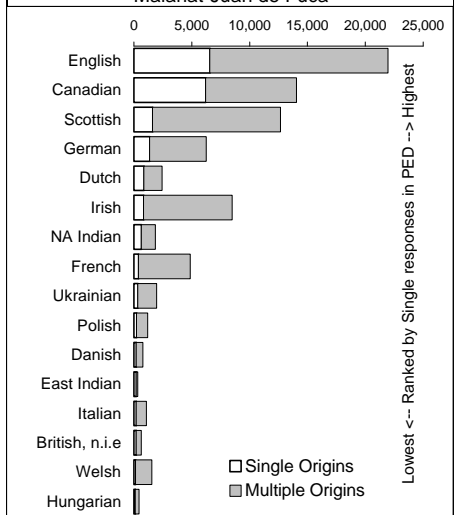
	Malahat-Juan de Fuca	BC
Population 15+ years	36,575	2,954,705
Labour force	24,840	1,960,665
Participation rate	67.9	66.4
Unemployment rate	8.6	9.6
Males	9.4	9.8
Females	7.4	9.2

Labour Force by Industry



Ethnicity

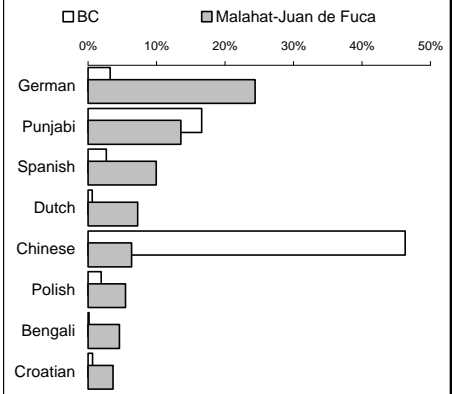
Single and Multiple Ethnic Origins in Malahat-Juan de Fuca



Home Language

	Malahat-Juan de Fuca	BC
% reporting home language . . .		
Single response (one language)	98.9	98.0
English	95.1	85.4
Non-official (see chart)	3.6	12.1
Multiple response	1.0	2.0

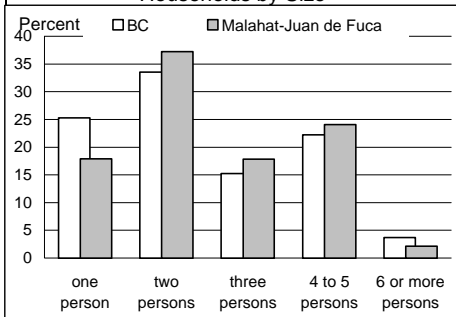
Single Non-official Home Language (Distribution)



Private Households

	Malahat-Juan de Fuca	BC
Total private households	17,600	1,424,635
% single person h'seholds	17.9	25.3
Total families	13,980	1,008,440
% with children	57.8	60.8
% lone parent family	12.5	13.8

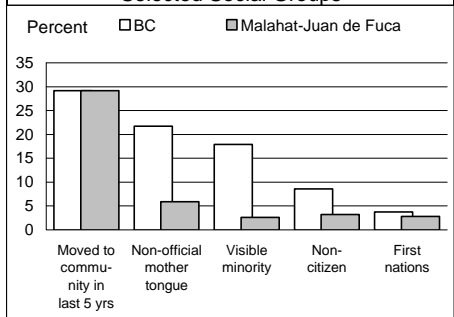
Households by Size



Education & Social Groups

	Malahat-Juan de Fuca	BC
% of population 15+ yrs having attained . . .		
Less than high school grad.	29.9	31.1
High school graduation	13.8	12.9
Trade certificate	4.7	3.5
Some university	10.9	11.9
University degree	9.6	13.6

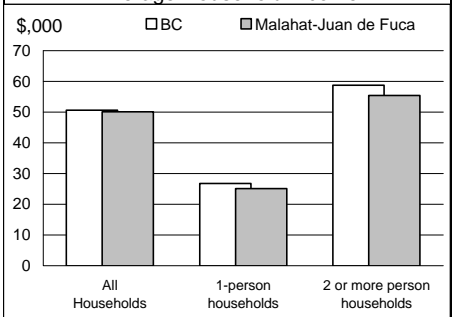
Selected Social Groups



Income

	Malahat-Juan de Fuca	BC
Average Total Income		
All 15 yrs+ with income	\$25,677	\$26,295
Males	\$31,004	\$32,457
Females	\$20,137	\$20,028
Avg. Employment Income	\$25,587	\$27,480

Average Household Income



This report is derived by summing data for Federal Electoral District enumeration areas (FED EAs) that constitute the Provincial Electoral District (PED). EAs crossing PED boundaries are allocated to only one PED. Since data for a number of FED EAs

is suppressed and data for all others is randomly rounded to preserve privacy of individuals, the sum of data for all PEDs will not total to BC figures here that have been rounded after first aggregating unsuppressed and unrounded FED EA data.