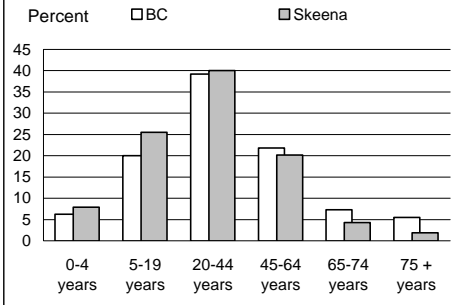


1996 Census Profile  
**Skeena**  
 Provincial Electoral District

**Population by Age Group**

	Skeena	BC
<b>Total population</b> (as of May 14, 1996)	34,211	3,724,500
Percent of BC	0.9	100.0
<b>Aged 20+ years</b>	22,700	2,746,395
Percent of total population	66.4	73.7

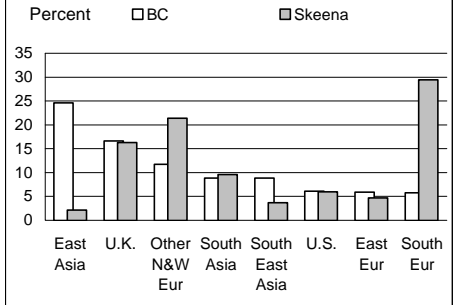
**Population by Age Group**



**Immigrant Population**

	Skeena	BC
<b>Non-Immigrants</b>	26,750	2,756,530
% born in BC	70.0	63.2
% born other provinces	30.0	36.8
<b>Immigrants</b>	5,305	903,190
% of population	15.5	24.2

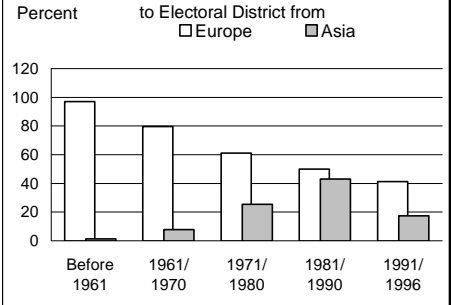
**Birthplace of Immigrant Population**



**Changing Face of Immigrants**

	Skeena	BC
<b>Ever immigrants</b>	5,305	903,190
% born in Europe	72.9	40.1
% born in Asia	15.5	44.4
<b>Immigrants since 1981</b>	955	402,475
% born in Europe	47.1	16.0
% born in Asia	34.6	69.8

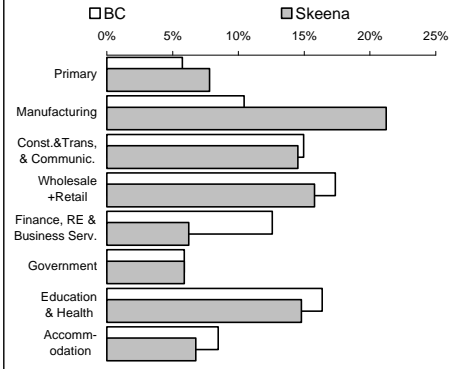
**Percent of Immigrants from Europe and Asia**



**Experienced Labour Force**

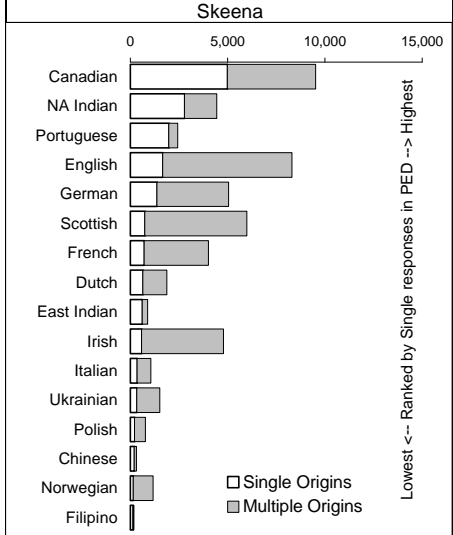
	Skeena	BC
Population 15+ years	25,295	2,954,705
<b>Labour force</b>	18,085	1,960,665
Participation rate	71.5	66.4
Unemployment rate	10.6	9.6
Males	10.8	9.8
Females	10.4	9.2

**Labour Force by Industry**



**Ethnicity**

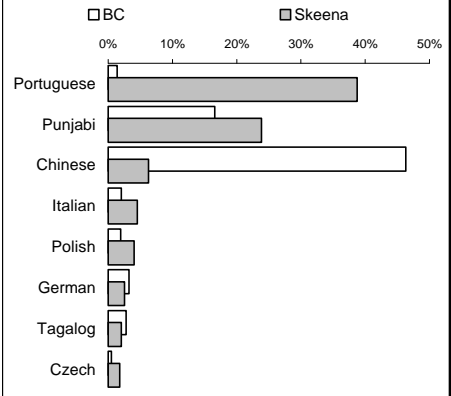
**Single and Multiple Ethnic Origins in Skeena**



**Home Language**

	Skeena	BC
<b>% reporting home language . . .</b>		
Single response (one language)	99.0	98.0
English	93.1	85.4
Non-official (see chart)	5.6	12.1
Multiple response	1.0	2.0

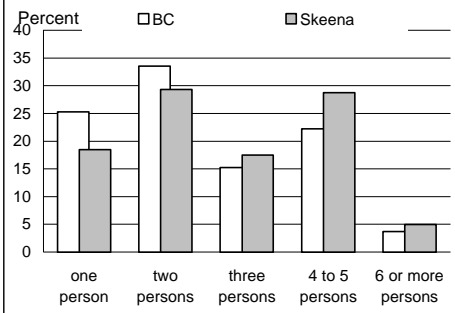
**Single Non-official Home Language (Distribution)**



**Private Households**

	Skeena	BC
<b>Total private households</b>	11,735	1,424,635
% single person h'seholds	18.4	25.3
<b>Total families</b>	9,265	1,008,440
% with children	68.5	60.8
% lone parent family	13.8	13.8

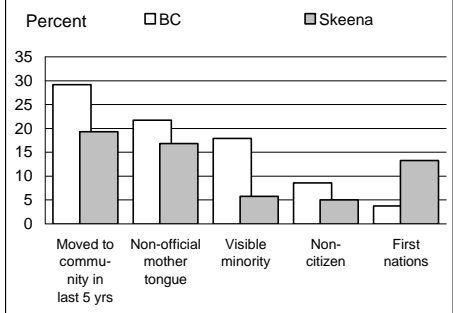
**Households by Size**



**Education & Social Groups**

	Skeena	BC
<b>% of population 15+ yrs having attained . . .</b>		
Less than high school grad.	37.9	31.1
High school graduation	15.0	12.9
Trade certificate	3.2	3.5
Some university	8.7	11.9
University degree	6.7	13.6

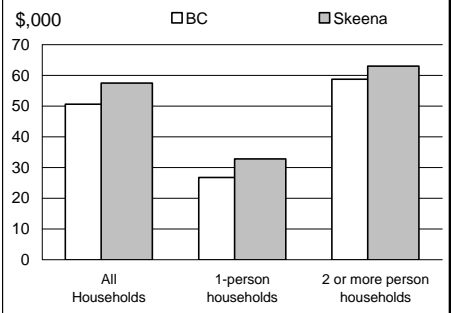
**Selected Social Groups**



**Income**

	Skeena	BC
<b>Average Total Income</b>		
All 15 yrs+ with income	\$29,417	\$26,295
Males	\$38,374	\$32,457
Females	\$18,964	\$20,028
<b>Avg. Employment Income</b>	\$31,482	\$27,480

**Average Household Income**



This report is derived by summing data for Federal Electoral District enumeration areas (FED EAs) that constitute the Provincial Electoral District (PED). EAs crossing PED boundaries are allocated to only one PED. Since data for a number of FED EAs

is suppressed and data for all others is randomly rounded to preserve privacy of individuals, the sum of data for all PEDs will not total to BC figures here that have been rounded after first aggregating unsuppressed and unrounded FED EA data.