

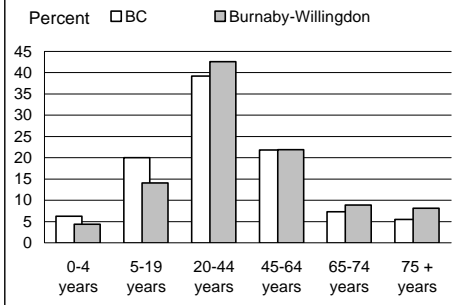
1996 Census Profile
Burnaby-Willingdon
 Provincial Electoral District

7

Population by Age Group

	Burnaby-Willingdon	BC
Total population (as of May 14, 1996)	48,224	3,724,500
Percent of BC	1.3	100.0
Aged 20+ years	39,280	2,746,395
Percent of total population	81.5	73.7

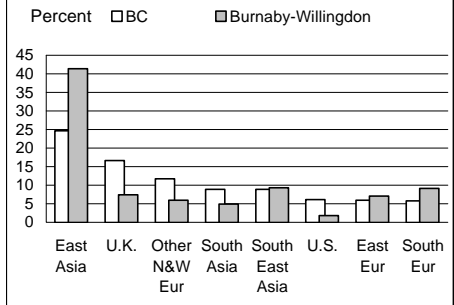
Population by Age Group



Immigrant Population

	Burnaby-Willingdon	BC
Non-Immigrants	25,500	2,756,530
% born in BC	64.3	63.2
% born other provinces	35.5	36.8
Immigrants	20,535	903,190
% of population	42.6	24.2

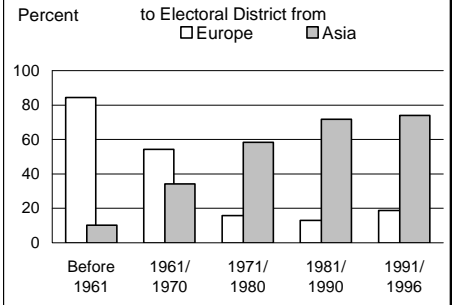
Birthplace of Immigrant Population



Changing Face of Immigrants

	Burnaby-Willingdon	BC
Ever immigrants	20,535	903,190
% born in Europe	29.8	40.1
% born in Asia	58.5	44.4
Immigrants since 1981	12,230	402,475
% born in Europe	17.1	16.0
% born in Asia	73.3	69.8

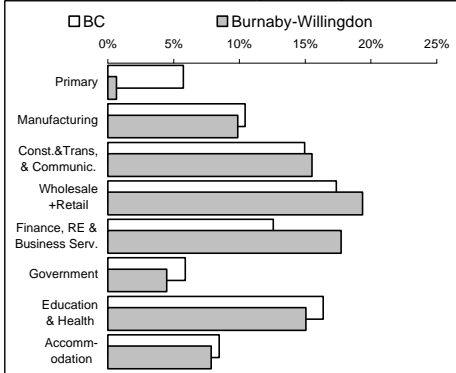
Percent of Immigrants from Europe and Asia



Experienced Labour Force

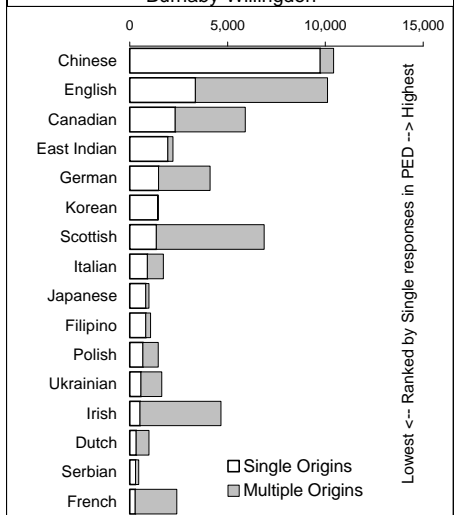
	Burnaby-Willingdon	BC
Population 15+ years	41,135	2,954,705
Labour force	24,755	1,960,665
Participation rate	60.2	66.4
Unemployment rate	9.6	9.6
Males	9.1	9.8
Females	9.8	9.2

Labour Force by Industry



Ethnicity

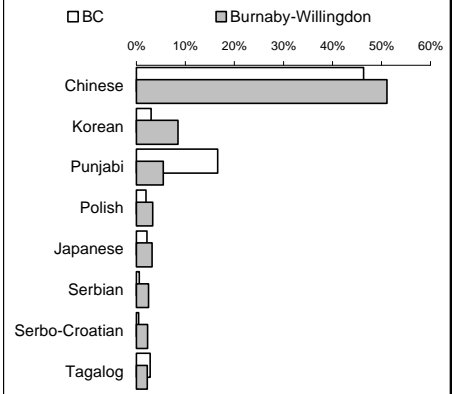
Single and Multiple Ethnic Origins in Burnaby-Willingdon



Home Language

	Burnaby-Willingdon	BC
% reporting home language . . .		
Single response (one language)	97.4	98.0
English	77.6	85.4
Non-official (see chart)	19.3	12.1
Multiple response	2.5	2.0

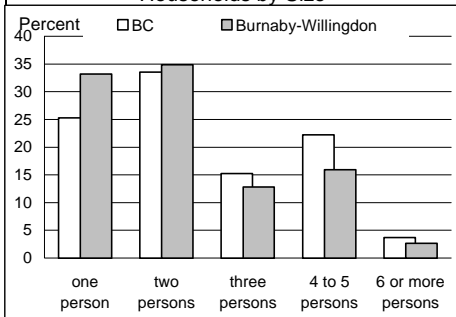
Single Non-official Home Language (Distribution)



Private Households

	Burnaby-Willingdon	BC
Total private households	20,580	1,424,635
% single person h'seholds	33.2	25.3
Total families	12,155	1,008,440
% with children	55.3	60.8
% lone parent family	12.6	13.8

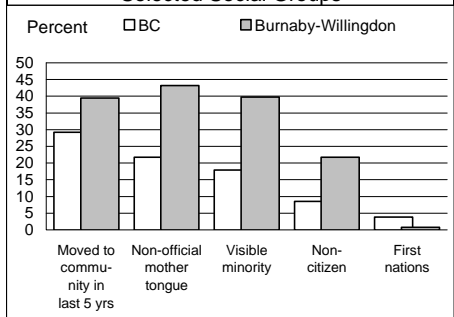
Households by Size



Education & Social Groups

	Burnaby-Willingdon	BC
% of population 15+ yrs having attained . . .		
Less than high school grad.	27.1	31.1
High school graduation	12.5	12.9
Trade certificate	2.7	3.5
Some university	13.6	11.9
University degree	16.7	13.6

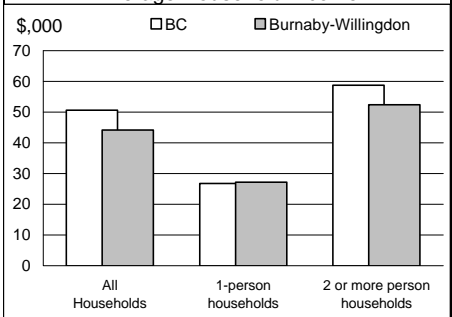
Selected Social Groups



Income

	Burnaby-Willingdon	BC
Average Total Income		
All 15 yrs+ with income	\$24,101	\$26,295
Males	\$27,879	\$32,457
Females	\$20,428	\$20,028
Avg. Employment Income	\$26,468	\$27,480

Average Household Income



This report is derived by summing data for Federal Electoral District enumeration areas (FED EAs) that constitute the Provincial Electoral District (PED). EAs crossing PED boundaries are allocated to only one PED. Since data for a number of FED EAs is suppressed and data for all others is randomly rounded to preserve privacy of individuals, the sum of data for all PEDs will not total to BC figures here that have been rounded after first aggregating unsuppressed and unrounded FED EA data.