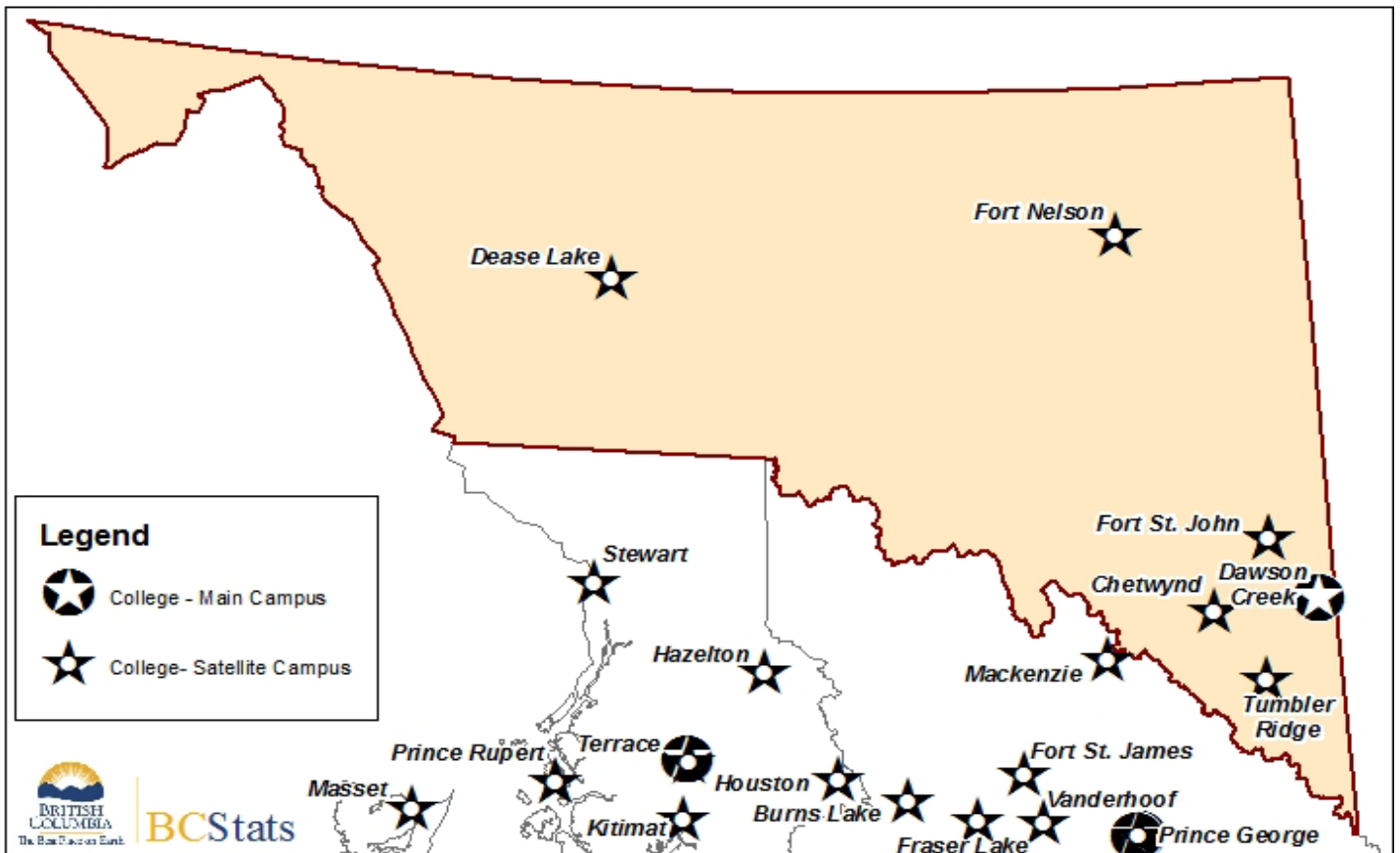


*British Columbia: Regional Employment Projection Model*  
**INDUSTRY AND OCCUPATION PROJECTIONS: 2008 to 2013**  
*Northern Lights College Region*



Geographic Location of Population				
Major Cities	Population <u>2006 Census</u>	% of <u>Region</u>	Land <u>Area</u>	Population <u>Density</u>
			<i>Sq Km</i>	<i>Persons per Sq Km</i>
Fort St. John, C	17,402	26.3	22.7	765.3
Dawson Creek, C	10,994	16.6	22.3	492.6
Fort Nelson, T	4,514	6.8	13.3	340.4
Chetwynd, DM	2,633	4.0	64.3	40.9
Tumbler Ridge, DM	2,454	3.7	1,574.5	1.6
Taylor, DM	1,384	2.1	16.6	83.3
Hudson's Hope, DM	1,012	1.5	869.4	1.2
Pouce Coupe, VL	739	1.1	2.1	358.7
Rest of region	25,065	37.9	361,179.1	0.1
<b>Total Region</b>	<b>66,197</b>	<b>100.0</b>	<b>363,764.2</b>	<b>0.2</b>
<b>Region as % of BC</b>	<b>1.6</b>		<b>39.3</b>	
<b>Youth age 15-29</b>	<b>14,740</b>			
<b>Youth in Region as % of BC</b>	<b>1.9</b>			

## **Note to Users**

**All assumptions relating to employment are based on past conditions, modified wherever possible to take into consideration future changes. The resulting employment projections are not necessarily what will be, but rather what could be, given the realization of these conditions. It is certainly possible that unforeseen changes in factors such as economic development, government policy, or land use and zoning will affect future employment. Consequently, the projections should only be regarded as one possible scenario on the future size and distribution of the workforce.**

It is important for users to understand that the same set of industries and occupations are reported for each of the 12 College Regions, regardless of the importance of these industries to any particular regional economy. Some of these industries, while significant to the province overall, may have a very small presence in a particular region. For example, the Beverage Manufacturing industry could show up as the highest growth rate for each region of the province because the wine industry is expected to grow, but this would mean the Okanagan College Region would gain hundreds of jobs while the Northwest would gain 5 to 10 jobs at the most. For this reason, growth rates should be viewed in the context of the size of the occupational or industry grouping to clarify the number of jobs being created or lost and the potential impact the change would have on the local economy.

For information on the Regional Districts contained in the College Regions, see [Appendix 3: REGIONAL DISTRICT TO COLLEGE REGION CONVERSION FOR REPM](#).

The December 2008 version of the Major Projects Inventory was used in the development of the employment projections for the 2008-2013 version of the REPM. A full listing of all the Major Projects under construction or at the proposal stage can be found at [http://www.bcstats.gov.bc.ca/pubs/pr\\_mproj.asp](http://www.bcstats.gov.bc.ca/pubs/pr_mproj.asp)

## **Regional Employment Projection Model (REPM)**

### **Contents**

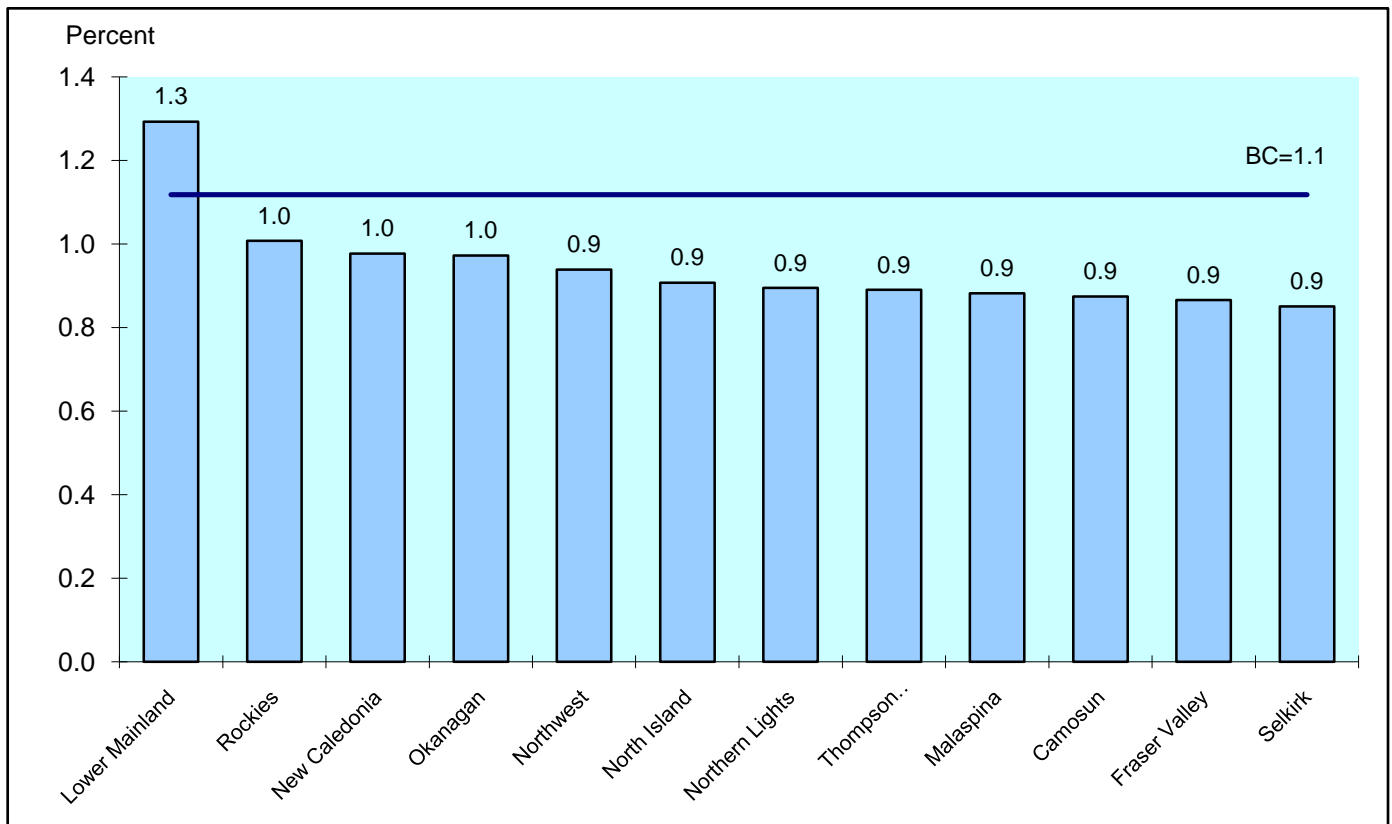
1. Projected Annual Growth in Employment Demand by College Region
2. Projected Annual Growth in Employment Demand. Comparison between Industries
3. Industrial Structure Compared with BC. Percent Share of Employment by Industry
4. Projected Annual Growth in Employment Demand. Comparison between Occupations
5. Occupational Structure Compared with BC. Percent Share of Employment by Occupation
6. Projected Annual Growth Rates in Occupational Demand, 2-digit occupation

### **Appendices**

1. Summary of the Methodology for the BC REPM
2. COPS Industry Conversion for REPM
3. Regional District to College Region Conversion for REPM
4. Projected Annual Growth Rates in Occupational Demand (3-digit)
5. Projected Annual Growth Rates in Occupational Demand (4-digit)

Funding for this project was made possible through the Labour Market Information initiative under the Canada-British Columbia Labour Market Agreement (LMA), which is administered for B.C. by the Ministry of Advanced Education and Labour Market Development.

## Projected Annual Growth in Employment Demand by College Region\*



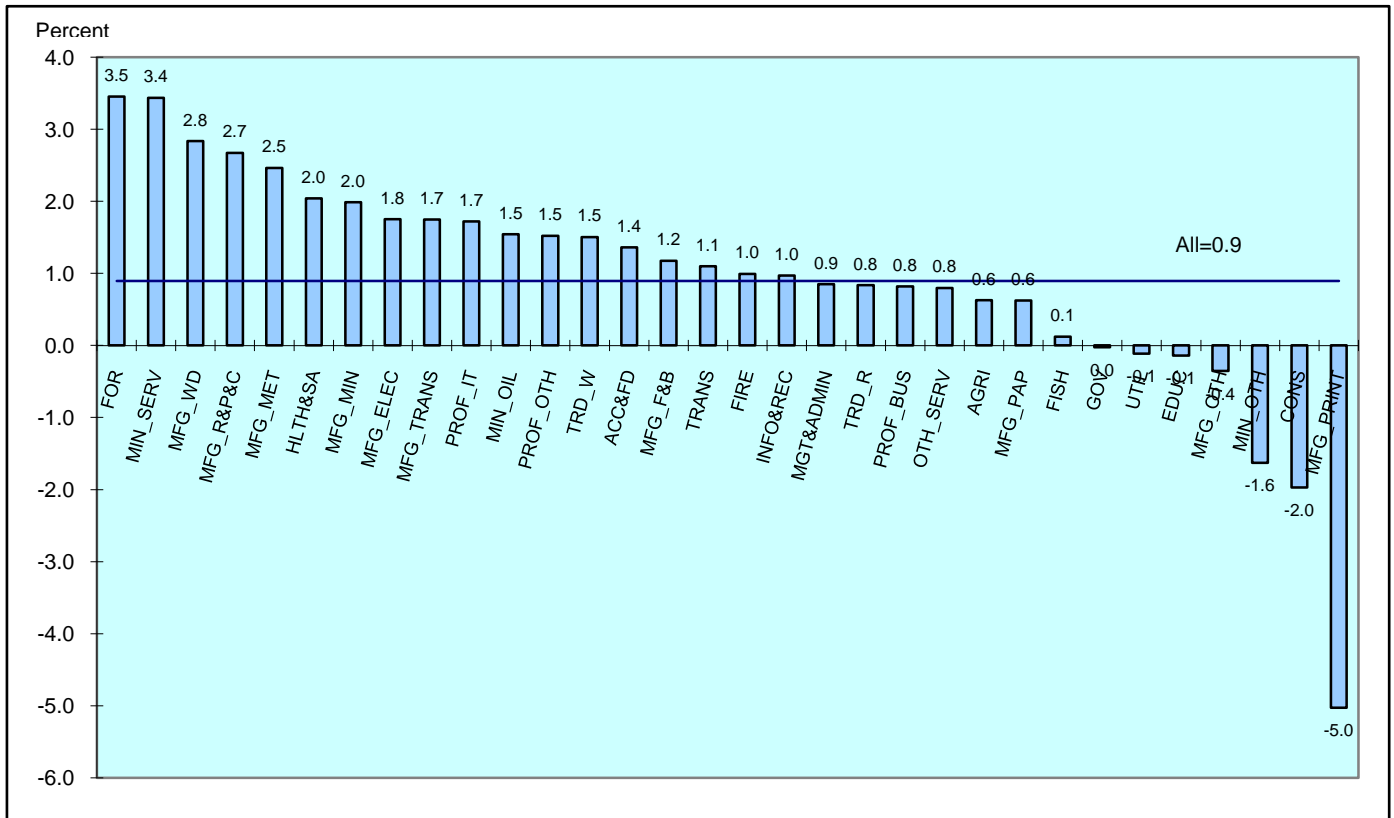
<u>College Region*</u>	<u>Estimated Employment</u>		<u>Avg Annual %</u>
	<u>2008</u>	<u>2013</u>	<u>Chng Over 5</u>
			<u>Years</u>
			<u>2008 to 2013</u>
Camosun	198,090	206,750	0.9
Fraser Valley	135,090	140,940	0.9
Lower Mainland	1,249,300	1,330,070	1.3
Malaspina	111,810	116,750	0.9
New Caledonia	76,330	80,060	1.0
North Island	76,880	80,370	0.9
<b>Northern Lights</b>	<b>44,800</b>	<b>46,810</b>	<b>0.9</b>
Northwest	38,710	40,530	0.9
Okanagan	202,660	212,520	1.0
Rockies	45,290	47,570	1.0
Selkirk	41,410	43,170	0.9
Thompson Rivers	93,310	97,470	0.9
<b>Total</b>	<b>2,313,700</b>	<b>2,443,000</b>	<b>1.1</b>

\* See Appendix 3 for details on the Regional Districts included in the College Regions.

# Northern Lights College Region

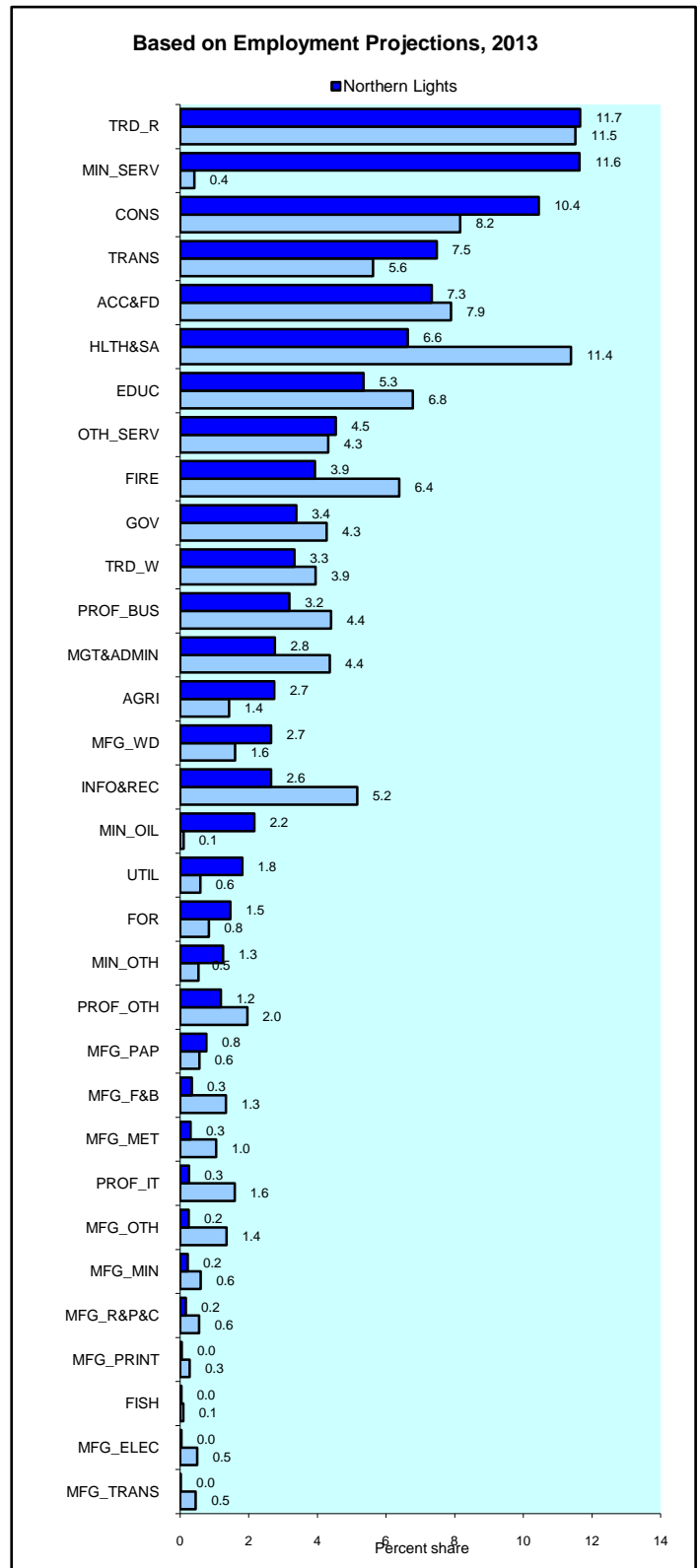
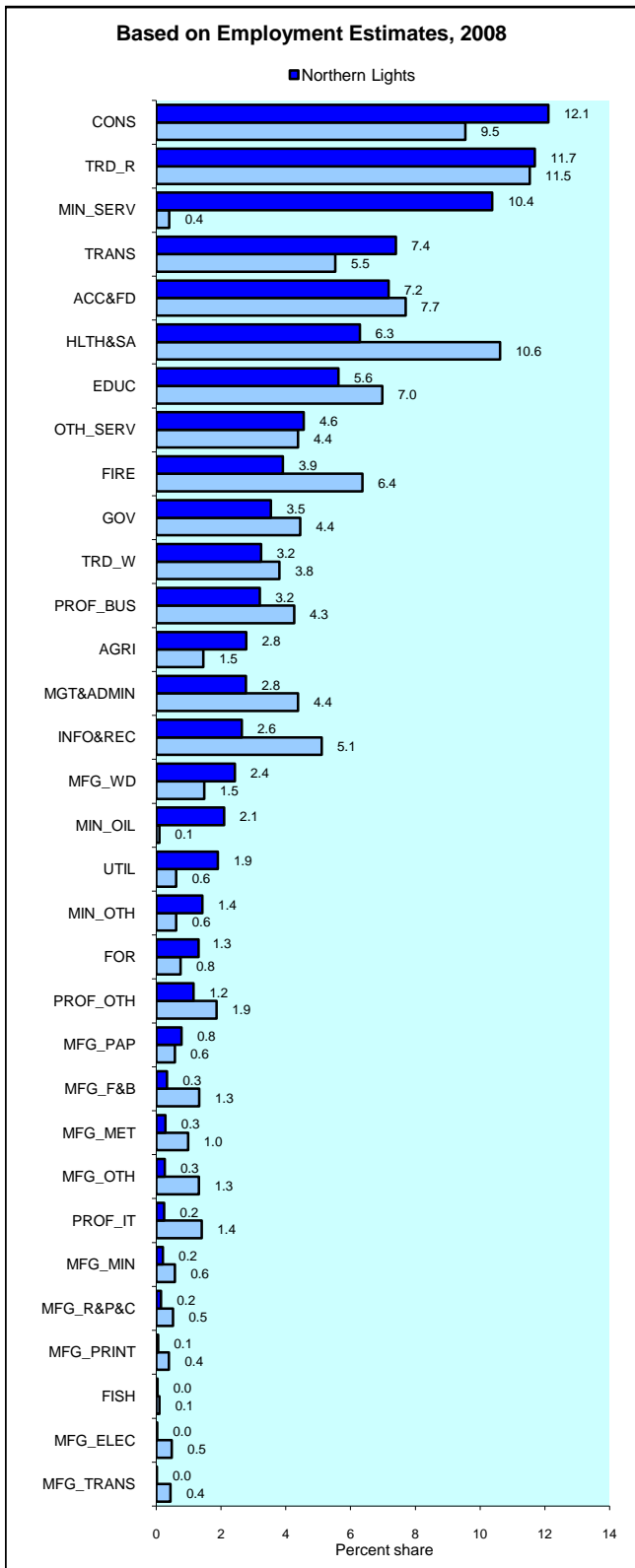
## Projected Annual Growth in Employment Demand

### Comparison Between Industries



	Avg Annual % Chng Over 5 Years				Avg Annual % Chng Over 5 Years		
	Estimated Employment 2008	Estimated Employment 2013	2008 to 2013		Estimated Employment 2008	Estimated Employment 2013	2008 to 2013
<b>Goods Producing Ind</b>				<b>Service Producing Ind.</b>			
Agriculture	1,250	1,280	0.6	Trade--Wholesale	1,450	1,560	1.5
Forestry	580	690	3.5	Trade--Retail	5,240	5,460	0.8
Fishing, Hunting, & Trapping	20	20	0.1	Transportation	3,320	3,500	1.1
Oil & Gas	940	1,010	1.5	Finance, Insurance, R.E.	1,750	1,840	1.0
Mining (non Oil & Gas)	640	590	-1.6	Prof--Bus Services	1,430	1,490	0.8
Services to Mining	4,650	5,450	3.4	Prof--Computer Systems	110	120	1.7
Utilities	850	850	-0.1	Prof--Other Services	520	560	1.5
Construction	5,420	4,890	-2.0	Management/Admin/Other Supp	1,240	1,290	0.9
Mfg--Food & Beverages	150	160	1.2	Education	2,520	2,500	-0.1
Mfg--Wood Products	1,090	1,240	2.8	Health & Social Assist.	2,820	3,100	2.0
Mfg--Paper Products	350	360	0.6	Information, Culture, Rec	1,180	1,240	1.0
Mfg--Printing	30	20	-5.0	Accom & Food Services	3,210	3,430	1.4
Mfg--Rubber, Plas. Chem	70	80	2.7	Services--other	2,040	2,120	0.8
Mfg--Mineral Products	90	100	2.0	Government	1,590	1,580	0.0
Mfg--Metal Fab & Machinery	130	140	2.5				
Mfg--Comp, Electronic, Elect	10	20	1.8	<b>Total Service Producing</b>	<b>28,420</b>	<b>29,800</b>	<b>1.0</b>
Mfg--Transportation Eq.	10	10	1.7				
Mfg--Other	120	110	-0.4	<b>Total, all industries</b>	<b>44,800</b>	<b>46,810</b>	<b>0.9</b>
<b>Total Goods Producing</b>	<b>16,390</b>	<b>17,010</b>	<b>0.8</b>				

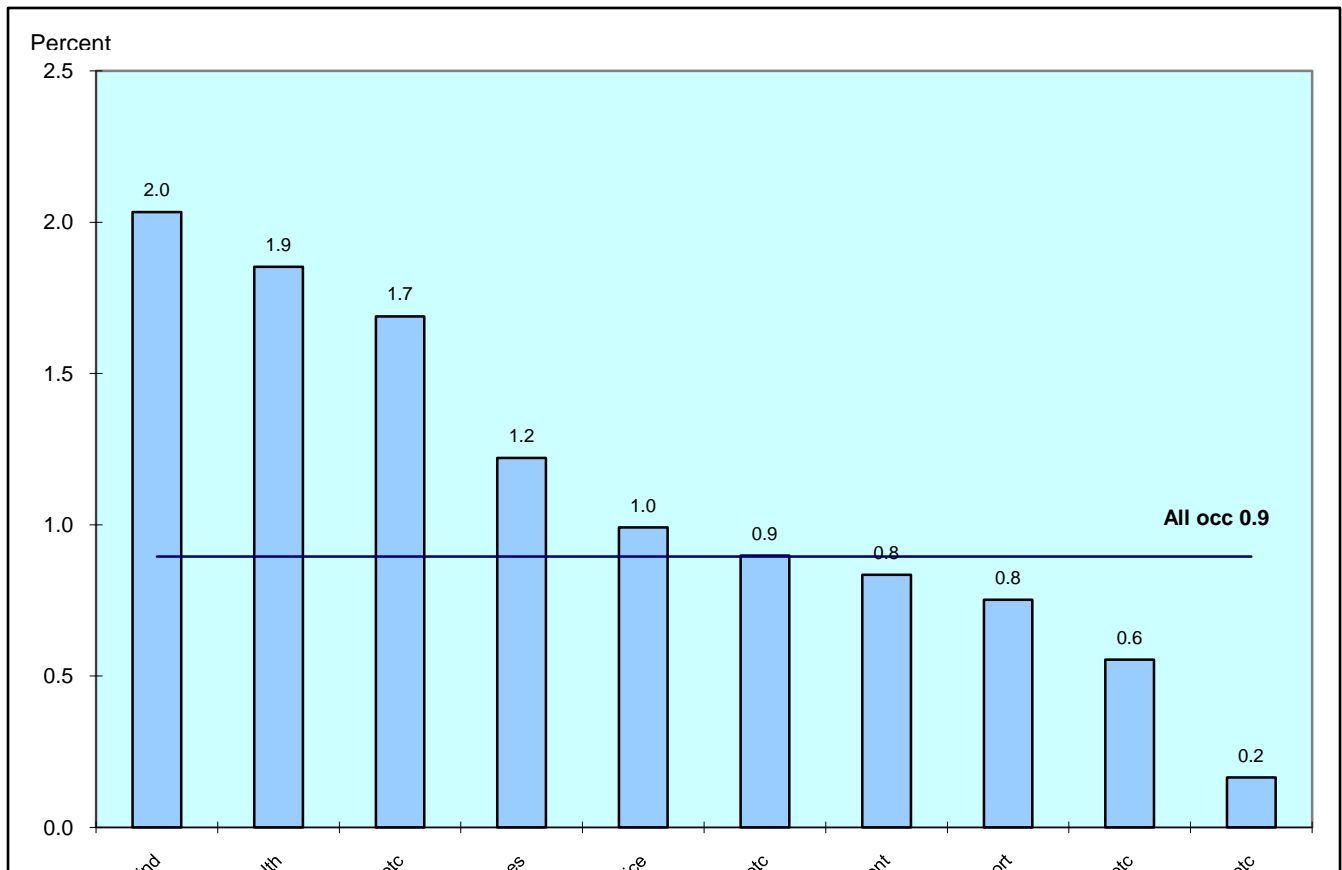
# Northern Lights College Region Industrial Structure Compared with BC Percent Share of Employment by Industry



# Northern Lights College Region

## Projected Annual Growth in Employment Demand

### Comparison Between Occupations

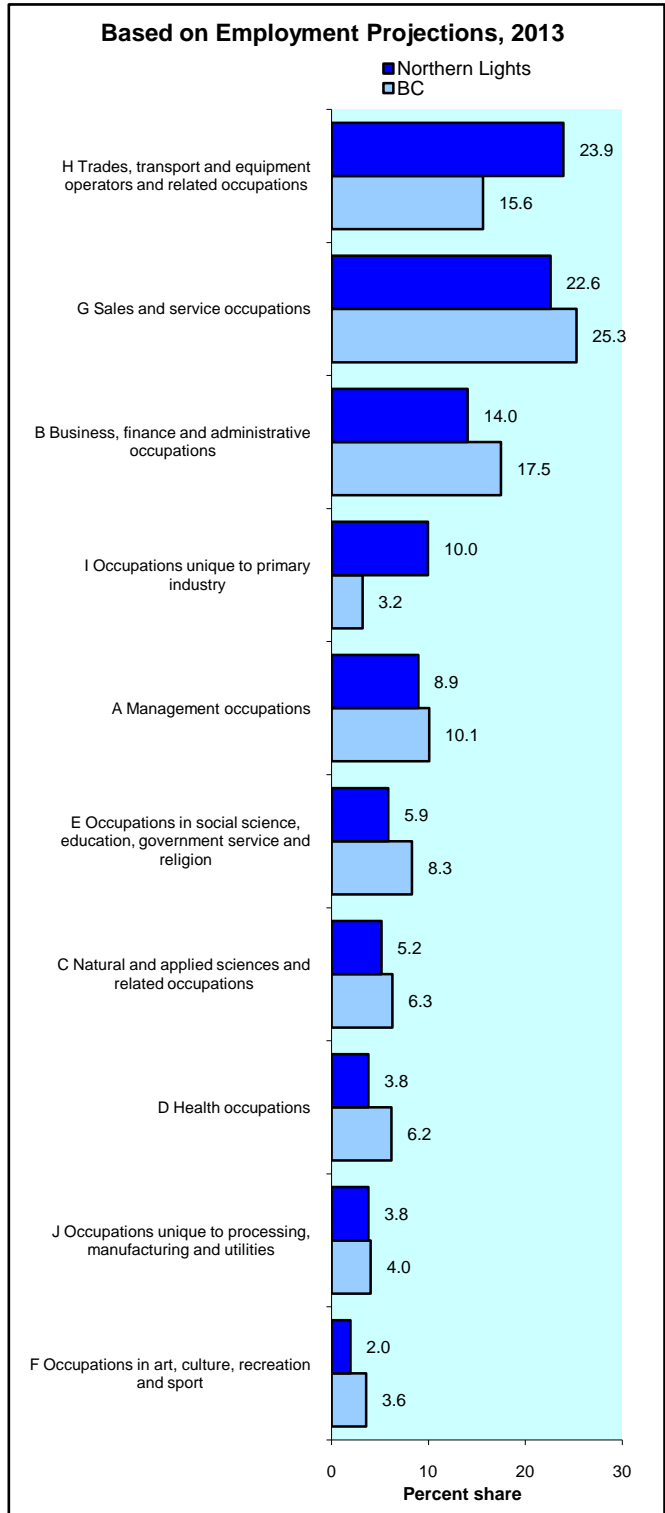
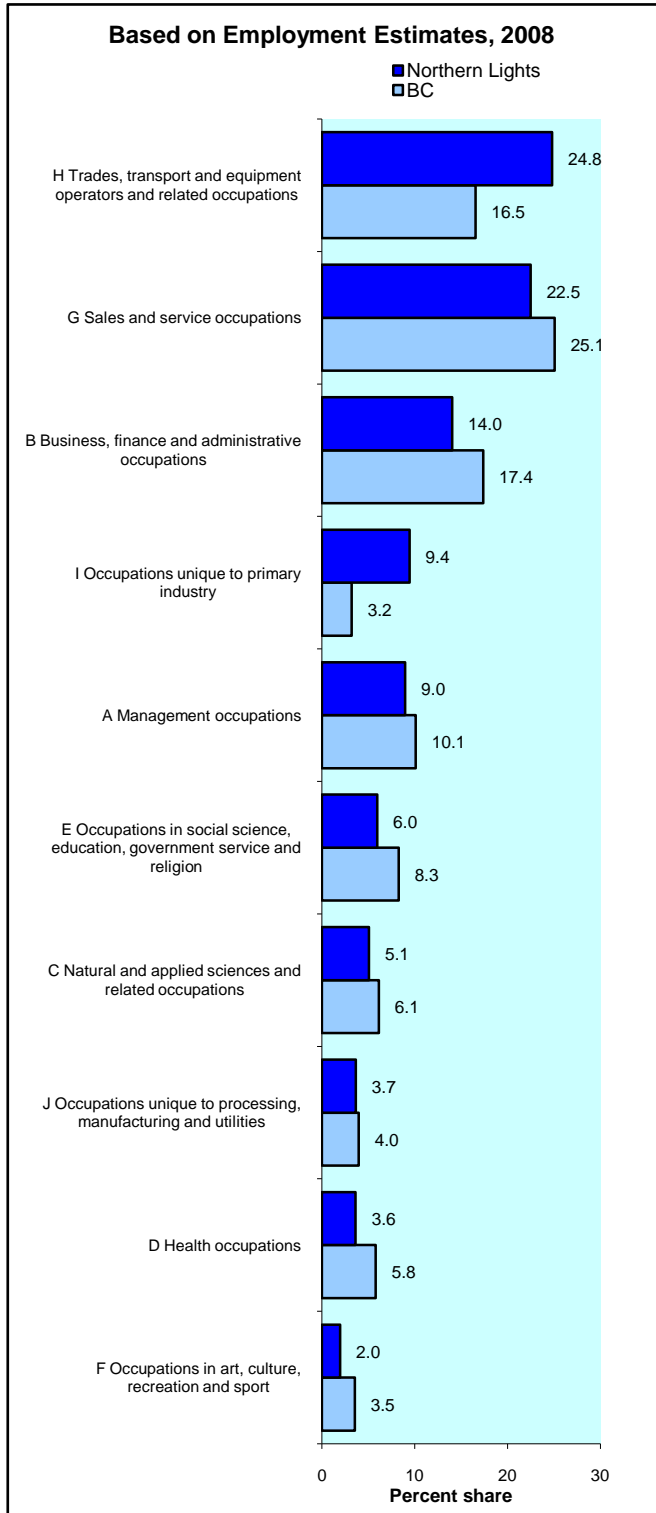


	Estimated Employment		Avg Annual % Chng Over 5 Years
	2008	2013	2008 to 2013
All occupations	44,800	46,810	<b>0.9</b>
A Management occupations	4,020	4,190	<b>0.8</b>
B Business finance and administrative occupations	6,290	6,570	<b>0.9</b>
C Natural and applied sciences and related occupations	2,270	2,410	<b>1.2</b>
D Health occupations	1,630	1,780	<b>1.9</b>
E Occupations in social science, education, government serv, & religion	2,670	2,740	<b>0.6</b>
F Occupations in art culture recreation and sport	880	910	<b>0.8</b>
G Sales and service occupations	10,070	10,570	<b>1.0</b>
H Trades transport and equipment operators and related occupations	11,110	11,200	<b>0.2</b>
I Occupations unique to primary industry	4,230	4,660	<b>2.0</b>
J Occupations unique to processing manufacturing and utilities	1,640	1,780	<b>1.7</b>

# Northern Lights College Region

## Occupational Structure Compared with BC

### Percent Share of Employment by Occupation



# Northern Lights College Region

## Projected Annual Growth Rates in Occupational Demand

	Estimated Employment		Avg Annual % Chng Over 5 Years
	<u>2008</u>	<u>2013</u>	<u>2008 to 2013</u>
All occupations	44,800	46,810	0.9
A0 Senior management occupations	340	360	1.1
A1 Specialist managers	640	670	1.2
A2 Managers in retail trade food and accommodation services	1,440	1,510	1.0
A3 Other managers n.e.c.	1,610	1,650	0.5
B0 Professional occupations in business and finance	620	640	0.9
B1 Finance and insurance administration occupations	830	860	0.8
B2 Secretaries	790	820	0.7
B3 Administrative and regulatory occupations	780	810	0.8
B4 Clerical supervisors	160	170	1.1
B5 Clerical occupations	3,120	3,270	1.0
C0 Professional occupations in natural and applied sciences	830	880	1.3
C1 Technical occupations related to natural and applied sciences	1,440	1,530	1.2
D0 Professional occupations in health	270	290	1.7
D1 Nurse supervisors and registered nurses	440	480	2.0
D2 Technical and related occupations in health	430	470	1.8
D3 Assisting occupations in support of health services	490	540	1.9
E0 Judges, lawyers, psychologists, social workers, ministers of religion & policy/program officers	620	650	0.9
E1 Teachers and professors	1,310	1,300	-0.1
E2 Paralegals, social services workers & occup. in educ. & religion n.e.c.	720	780	1.4
F0 Professional occupations in art and culture	310	320	0.7
F1 Technical occupations in art, culture, recreation and sport	570	590	0.8
G0 Sales and service supervisors	320	340	1.0
G1 Wholesale, technical, insurance, real estate sales specialists & retail, wholesale and grain buyers	640	680	1.2
G2 Retail salespersons and sales clerks	1,920	2,010	0.9
G3 Cashiers	860	890	0.9
G4 Chefs and cooks	690	730	1.4
G5 Occupations in food and beverage service	660	700	1.3
G6 Occupations in protective services	460	470	0.5
G7 Occup. in travel & accommodation incl. attendants in recreation & sport	400	420	1.1
G8 Childcare and home support workers	700	730	0.7
G9 Sales and service occupations n.e.c.	3,430	3,600	1.0
H0 Contractors and supervisors in trades and transportation	590	590	-0.1
H1 Construction trades	2,330	2,180	-1.3
H2 Stationary engineers, power stn operators & electrical trades & telecom.	760	750	-0.4
H3 Machinists, metal forming, shaping and erecting occupations	500	520	0.9
H4 Mechanics	1,350	1,420	1.0
H5 Other trades n.e.c.	370	370	0.0
H6 Heavy equipment and crane operators including drillers	1,040	1,060	0.3
H7 Transport equipment operators & related workers, excl. labourers	2,520	2,680	1.2
H8 Trades helpers, construction and transport labourers & related	1,640	1,630	-0.1
I0 Occupations unique to agriculture, excluding labourers	1,080	1,120	0.7

# Northern Lights College Region

## Projected Annual Growth Rates in Occupational Demand

	Estimated Employment		Avg Annual % Chng Over 5 Years
	<u>2008</u>	<u>2013</u>	<u>2008 to 2013</u>
I1 Occup. unique to forestry ops, mining, oil & gas extraction, fishing excl. labourers	1,720	1,960	2.8
I2 Primary production labourers	1,430	1,590	2.2
J0 Supervisors in manufacturing	150	170	1.6
J1 Machine operators in manufacturing	870	940	1.6
J2 Assemblers in manufacturing	160	170	1.6
J3 Labourers in processing, manufacturing and utilities	470	520	1.9

## **Appendix 1**

### **Summary of Methodology for the British Columbia Regional Employment Projection Model (REPM)**

## **Summary of Methodology for the British Columbia Regional Employment Projection Model (REPM)**

### **Overview**

The methodology used in the model is based on previous work on community dependencies carried out by BC Stats. The fundamental premise is that the economy of a region can be represented by income flows that can be classified as “basic” (or driver) and “non-basic” (or induced) depending on the source of the income. Basic income is the result of employment income generated from “basic jobs” plus investment income.

Included among basic jobs are those that are financed from resources emanating from outside the region. These jobs are labelled as “direct jobs” and are found in industries that export their product internationally, nationally or to other regions within B.C. Typically, export industries are in the goods producing sector, e.g., the primary and manufacturing industries. However, with globalization, certain industries in the service producing sector are increasingly exporting their products; examples of this would be port facilities (categorized in the Water Transport industry), the Financial and Insurance industries, and High Technology Business Service industries (such as Engineering), etc. As well, the metropolitan regions provide retail and wholesale trade services to the outlying regions of B.C. and many local economies provide tourism services such as accommodation, food, and recreation services to residents from other regions (both inside and outside the province).

Another less obvious component of direct jobs are those in the public sector. Education, health and government jobs are generated through tax revenues from the Federal or Provincial governments so those industries rely on general tax revenues coming from outside the region<sup>1</sup>.

The other component of basic jobs is classified as “indirect jobs”. The model calculates indirect employment effects from employment changes in direct jobs. For example, when direct jobs are created in a local sawmill, indirect jobs will be created in the “upstream” industries that supply goods and services that go into the production of lumber such as the logging industry, the equipment manufacturing industry, etc., and in the “downstream” industries that get the lumber to market such as the transportation industry, and the wholesale trade industry, etc. The model calculates these indirect jobs using multipliers based on inter-industry linkages from the British Columbia Input-Output Model. The sum of the direct jobs and the indirect jobs are labelled basic jobs. The wages and salaries earned from these basic jobs are the major component of basic income.

The other component of basic income is principally investment income and transfer payments which are assumed to come from outside the local community. Private pensions comprise a large percent of investment income, while Canada Pension Plan and Old Age Security payments form a large percent of transfer payments. Therefore, the growth in the senior population is used as an indicator of changes in this non-salary/non-wage component of basic income.

---

<sup>1</sup> For the purpose of the model, tax payments are treated as an income flow-out of the regional economy and are deducted from total income so are not connected with any particular industry.

Up to this point, the model has calculated the number of basic jobs by industry and the total basic income of the local region. The next step is to calculate the number of jobs created as a result of the expenditure of this basic income by the local population on household goods and services such as retail trades, restaurants, transportation, residential construction, etc. These induced jobs are called “non-basic jobs” and are calculated using a multiplier based on an income to non-basic jobs ratio derived from the British Columbia Input-Output Model. The final result is a count of the number of non-basic jobs by industry which is then added to the basic jobs to derive total jobs by industry by region.

The final component of the model is to convert the industry employment levels into occupation employment levels. To this end, fixed occupation-to-industry ratios, based on the 2006 Census of Canada data, are applied. Three different ratio structures are used: one for the Vancouver Census Metropolitan Area, one for the Victoria Census Metropolitan Area, and one for the “Rest of Province”.

## **Data Sources**

The current version of the model is benchmarked to the 2006 Census employment by Regional District (RD), and estimates are projected forward to the most up-to-date annual employment data from the Labour Force Survey (LFS). The growth rates for the direct industries from the LFS at the provincial level are used to project growth down to the RD level and then the sub-provincial growth rates are refined using standard variables that indicate differential growth between the regions. The population estimates and projections produced by BC Stats are an important data source for this purpose. For example, the employment growth in the education sector is largely dictated by the projected K-12 and post-secondary population growth in the relevant age groups. Government Services industry grows in line with the total population growth as does the social assistance industry. Employment in the health sector is primarily governed by the growth in the total population and, in particular, by the growth in the seniors’ population. The industries that have components in the tourism sector are differentiated according to the sub-provincial growth rates in tax revenues derived from room rentals. A further important determining factor of sub-region direct employment growth in the private sector is the major projects underway in the timeframe.

The output from the model is benchmarked to the LFS industry employment numbers at the B.C. level, as well as to the LFS regional employment numbers for the Development Regions and the Victoria and Vancouver Census Metropolitan Areas. Once the model is updated to the most current employment levels, then the forecast is produced for five years out. The industrial employment projections from the Canadian Occupational Projection System (COPS) are now used as the source data for the industrial growth, benchmarked to the British Columbia Ministry of Finance’s employment growth rate projections for the goods producing sector and the service producing sector. These growth rates are used in determining both the growth rates in the direct employment and as a benchmark to reconcile the industrial employment generated by the model. The allocation of the provincial growth pattern forecast among the regions is done the same way as the estimates. Population forecasts by Regional District and the information on planned capital projects from the BC Major Projects Inventory are used as the drivers. The one exception is there are no forecasts available

for Room Tax Revenue so, for the tourism industries, the new completed major projects in the food and accommodation sector are integrated into the model.

Currently, there is a demand for economic forecasts by occupation at the College Region level. College Regions are aggregations of sub-sets of Regional Districts. Occupational forecasts are produced at the College Region and the provincial level only. The accompanying appendices contain a conversion table which outlines which Regional District belongs to which College Region.

## **Updating**

The intent is to update the Regional Employment Projection Model annually, based on another year of LFS data plus a new COPS forecast. The multiplier coefficients used to calculate indirect employment, non-basic employment, and occupational employment are to be updated every five years when regional updated Census data becomes available. At that time, the Regional District employment data by industry will also be re-benchmarked.

The model is only as good as the input data assumptions. Reliance on good quality data from COPS is very important. Users of the data who perceive any problems with the assumptions in the model or question the quality of any of the data series we are using, should contact Cathy Stock, Director, Labour and Social Statistics, at (250) 953-3703 or [Cathy.Stock@gov.bc.ca](mailto:Cathy.Stock@gov.bc.ca).

July 2009

## Appendix 2

### REPM INDUSTRY

### COPS INDUSTRY

ACC&FD	31 Accommodation and food services
AGRIC	1 Agriculture
BEVMFG	9 Food and Beverage Products
BUS_HI	25 Computer System Design Services
BUS_HI	24 Professional Business Services
BUS_HI	26 Other Professional Services
BUS_LO	27 Management, Administrative and Other Support
BUS_LO	24 Professional Business Services
BUS_LO	26 Other Professional Services
COMMUNICA	30 Information, culture and recreation
CONSTRUCT	8 Construction
EDUCATION	28 Educational Services
FIRE	23 Finance, Insurance, Real Estate and Leasing
FISHING	3 Fishing, Hunting and Trapping
FISHMFG	9 Food and Beverage Products
FOODMFG	9 Food and Beverage Products
FORESTLOG	2 Forestry and Logging with support activities
GOVT	33 Public administration
HEALTH	29 Health Care and Social Assistance
MINING	5 Mining (except Oil and Gas)
MINING	6 Support Activities for Mining and Oil & Gas Extraction
MINMFG	14 Manufactured Mineral Products
OTHMFG	12 Printing and Related Support Activities
OTHMFG	13 Rubber, Plastics and Chemicals
OTHMFG	14 Manufactured Mineral Products
OTHMFG	15 Metal Fabrication and Machinery (excluding electrical)
OTHMFG	16 Computer, Electronic and Electrical Products
OTHMFG	17 Transportation Equipment Manufacturing
OTHMFG	18 Other Manufacturing
OTHSERV	29 Health Care and Social Assistance
OTHSERV	32 Other services
PAPERPULP	11 Paper Manufacturing
PETROL	4 Oil and Gas Extraction
PETROL	6 Support Activities for Mining and Oil and Gas Extraction
PETROLMFG	19 Other Manufacturing
RETAIL	21 Retail Trade
TRANOTHER	22 Transportation and Warehousing
TRANRAIL	22 Transportation and Warehousing
TRANTRUCK	22 Transportation and Warehousing
TRANWATER	22 Transportation and Warehousing
UTILITIES	7 Utilities
WDOTHER	10 Wood Product Manufacturing
WDSAWMILLS	10 Wood Product Manufacturing
WHOLESALE	20 Wholesale Trade

### Appendix 3

#### REGIONAL DISTRICT TO COLLEGE REGION CONVERSION FOR REPM

<b>COLLEGE REGION REGIONAL</b>	<b>REGIONAL DISTRICT #</b>	<b>REGIONAL DISTRICT NAME</b>	<b>% of REGIONAL DISTRICT</b>
CAMOSUN	17	Capital	100
FRASER VALLEY	9	Fraser Valley	100
LOWER MAINLAND	15	Greater Vancouver	100
LOWER MAINLAND	29	Sunshine Coast	100
LOWER MAINLAND	31	Squamish Lillooet	87
MALASPINA	19	Cowichan Valley	100
MALASPINA	21	Nanaimo	100
MALASPINA	27	Powell River	100
NEW CALEDONIA	41	Cariboo	37
NEW CALEDONIA	51	Bulkley Nechako	61
NEW CALEDONIA	53	Fraser-Fort George	100
NORTH ISLAND	23	Alberni-Clayoquot	100
NORTH ISLAND	25	Comox Strathcona	100
NORTH ISLAND	43	Mount Waddington	100
NORTH ISLAND	45	Central Coast	100
NORTHERN LIGHTS	49	Kitimat Stikine	2
NORTHERN LIGHTS	55	Peace River	100
NORTHERN LIGHTS	57	Stikine	100
NORTHERN LIGHTS	59	Northern Rockies	100
NORTHWEST	47	Skeena-Queen Charlotte	100
NORTHWEST	49	Kitimat Stikine	98
NORTHWEST	51	Bulkley Nechako	39
OKANAGAN	7	Okanagan- Similkameen	100
OKANAGAN	35	Central Okanagan	100
OKANAGAN	37	North Okanagan	100
OKANAGAN	39	Columbia Shushwap	85
ROCKIES	1	East Kootenay	100
ROCKIES	3	Central Kootenays	20
ROCKIES	39	Columbia Shushwap	15
SELKIRK	3	Central Kootenay	80
SELKIRK	5	Kootenay Boundary	100
THOMPSON RIVERS	31	Squamish Lillooet	13
THOMPSON RIVERS	33	Thompson Nicola	100
THOMPSON RIVERS	41	Cariboo	63

*Prepared by: BC Stats*

## **Appendix 4**

### **Projected Annual Growth Rates in Occupational Demand (3-digit)**

# Northern Lights College Region

## Projected Annual Growth Rates in Occupational Demand

	Estimated Employment		Avg Annual % Chng Over 5 Years
	<u>2008</u>	<u>2013</u>	<u>2008 to 2013</u>
All occupations	44,800	46,810	0.9
A01 Legislators and senior management	340	360	1.1
A11 Administrative services managers	240	250	1.0
A12 Managers in engineering, architecture, science and information systems	50	50	0.7
A13 Sales, marketing and advertising managers	240	260	1.5
A14 Facility operation and maintenance managers	110	110	1.1
A21 Managers in retail trade	1,000	1,050	0.9
A22 Managers in food service and accommodation	430	460	1.4
A30 Managers in financial and business services	270	280	0.9
A31 Managers in communication (except broadcasting)	20	20	1.1
A32 Managers in health, education, social and community services	180	180	0.5
A33 Managers in public administration	20	20	0.3
A34 Managers in art, culture, recreation and sport	50	50	0.9
A35 Managers in protective service	50	50	1.0
A36 Managers in other services	90	90	1.0
A37 Managers in construction and transportation	520	490	-1.2
A38 Managers in primary production (except agriculture)	290	330	2.7
A39 Managers in manufacturing and utilities	140	140	0.7
B01 Auditors, accountants and investment professionals	490	510	0.9
B02 Human resources and business service professionals	120	130	1.0
B11 Finance and insurance administrative occupations	830	860	0.8
B21 Secretaries, recorders and transcriptionists	790	820	0.7
B31 Administrative and regulatory occupations	780	810	0.8
B41 Clerical supervisors	160	170	1.1
B51 Clerical occupations, general office skills	1,030	1,080	1.0
B52 Office equipment operators	100	110	1.4
B53 Finance and insurance clerks	590	620	0.9
B54 Administrative support clerks	210	210	0.9
B55 Library, correspondence and related information clerks	390	410	0.7
B56 Mail and message distribution occupations	300	310	1.0
B57 Recording, scheduling and distributing occupations	500	530	1.1
C01 Physical science professionals	100	110	2.2
C02 Life science professionals	150	160	1.4
C03 Civil, mechanical, electrical and chemical engineers	200	210	0.7
C04 Other engineers	150	160	1.6
C05 Architects, urban planners and land surveyors	100	110	1.0
C06 Mathematicians, statisticians and actuaries	0	0	1.5
C07 Computer and information systems professionals	150	160	1.2
C11 Technical occupations in physical sciences	210	230	2.0
C12 Technical occupations in life sciences	210	220	1.1
C13 Technical occupations in civil, mechanical and industrial engineering	90	90	0.0
C14 Technical occupations in electronics and electrical engineering	270	290	1.1
C15 Technical occupations in architecture, drafting, surveying and mapping	130	140	0.9
C16 Other technical inspectors and regulatory officers	190	210	1.4
C17 Transportation officers and controllers	220	230	1.1
C18 Technical occupations in computer and information systems	120	130	0.9
D01 Physicians, dentists and veterinarians	130	150	1.9

# Northern Lights College Region

## Projected Annual Growth Rates in Occupational Demand

	Estimated Employment		Avg Annual % Chng Over 5 Years
	<u>2008</u>	<u>2013</u>	<u>2008 to 2013</u>
D02 Optometrists, chiropractors and other health diagnosing and treating professionals	20	20	2.0
D03 Pharmacists, dietitians and nutritionists	60	60	1.1
D04 Therapy and assessment professionals	60	60	1.8
D11 Nurse supervisors and registered nurses	440	480	2.0
D21 Medical technologists and technicians (except dental health)	130	140	1.9
D22 Technical occupations in dental health care	30	30	1.8
D23 Other technical occupations in health care (except dental)	260	290	1.8
D31 Assisting occupations in support of health services	490	540	1.9
E01 Judges, lawyers and Quebec notaries	100	110	0.8
E02 Psychologists, social workers, counsellors, clergy and probation officers	280	300	1.1
E03 Policy and program officers, researchers and consultants	240	250	0.7
E11 University professors and assistants	120	120	-0.1
E12 College and other vocational instructors	200	200	0.1
E13 Secondary and elementary school teachers and educational counsellors	1,000	990	-0.1
E21 Paralegals, social services workers and occupations in education and religion, n.e.c.	730	780	1.4
F01 Librarians, archivists, conservators and curators	20	20	0.9
F02 Writing, translating and public relations professionals	120	130	0.8
F03 Creative and performing artists	160	170	0.5
F11 Technical occupations in libraries, archives, museums and art galleries	40	40	0.6
F12 Photographers, graphic arts technicians and technical and co-ordinating occupations in motion pictures, broadcasting and the performing arts	70	80	1.1
F13 Announcers and other performers	20	20	1.0
F14 Creative designers and craftspersons	190	200	0.7
F15 Athletes, coaches, referees and related occupations	240	250	0.8
G01 Sales and service supervisors	320	340	1.0
G11 Sales representatives, wholesale trade	290	310	1.4
G12 Technical sales specialists, wholesale trade	80	80	1.3
G13 Insurance and real estate sales occupations and buyers	270	280	0.9
G21 Retail salespersons and sales clerks	1,920	2,000	0.9
G31 Cashiers	850	890	0.9
G41 Chefs and cooks	690	740	1.4
G51 Occupations in food and beverage service	660	700	1.3
G61 Police officers and firefighters	180	180	0.4
G62 Other occupations in protective service	150	150	0.1
G63 Security guards and related occupations	130	140	1.0
G71 Occupations in travel and accommodation	200	210	1.2
G72 Tour and recreational guides and casino occupations	90	90	1.0
G73 Other occupations in travel, accommodation, amusement and recreation	110	110	1.2
G81 Child care and home support workers	700	730	0.7
G91 Technical occupations in personal service	220	230	0.8
G92 Other occupations in personal service	150	160	0.9
G93 Cleaners	1,340	1,400	0.9
G94 Butchers and bakers, retail and wholesale	160	170	1.0
G96 Food counter attendants, kitchen helpers and related occupations	830	890	1.3
G97 Other sales and related occupations	630	650	0.9
G98 Other elemental service occupations	100	100	0.9

# Northern Lights College Region

## Projected Annual Growth Rates in Occupational Demand

	Estimated Employment		Avg Annual % Chng Over 5 Years
	<u>2008</u>	<u>2013</u>	<u>2008 to 2013</u>
H01 Contractors and supervisors, trades and related workers	560	550	-0.1
H02 Supervisors, railway and motor transportation occupations	50	50	1.4
H11 Plumbers, pipefitters and gas fitters	420	420	0.0
H12 Carpenters and cabinetmakers	1,010	930	-1.6
H13 Masonry and plastering trades	340	310	-1.8
H14 Other construction trades	560	520	-1.3
H21 Electrical trades and telecommunications occupations	680	660	-0.5
H22 Stationary engineers and power station and system operators	80	80	0.8
H31 Machinists and related occupations	40	50	1.3
H32 Metal forming, shaping and erecting trades	440	460	0.8
H41 Machinery and transportation equipment mechanics (except motor vehicle)	790	840	1.1
H42 Automotive service technicians	490	510	0.9
H43 Other mechanics	80	80	0.6
H51 Upholsterers, tailors, shoe repairers, jewellers and related occupations	50	50	0.7
H52 Printing press operators, commercial divers and other trades and related occupations, n.e.c.	70	70	1.2
H53 Other installers, repairers and servicers	270	260	-0.4
H61 Heavy equipment operators	930	950	0.3
H62 Crane operators, drillers and blasters	110	110	0.6
H71 Motor vehicle and transit drivers	2,280	2,420	1.2
H72 Train crew operating occupations	90	100	1.1
H73 Other transport equipment operators and related workers	150	150	1.0
H81 Longshore workers and material handlers	520	560	1.3
H82 Trades helpers and labourers	1,010	970	-0.9
H83 Public works and other labourers, n.e.c.	100	100	0.5
I01 Contractors, operators and supervisors in agriculture, horticulture and aquaculture	590	610	0.6
I02 Agriculture and horticulture workers	490	510	0.7
I11 Supervisors, logging and forestry	30	40	3.0
I12 Supervisors, mining, oil and gas	280	310	2.2
I13 Underground miners, oil and gas drillers and related workers	590	670	2.8
I14 Mine service workers and operators in oil and gas drilling	510	590	3.1
I15 Logging machinery operators	120	130	3.2
I16 Logging and forestry workers	160	190	2.7
I17 Fishing vessel masters and skippers and fishermen/women	10	10	0.2
I18 Other fishing and trapping occupations	0	10	0.7
I21 Primary production labourers	1,430	1,580	2.2
J01 Supervisors, processing occupations	140	150	1.7
J02 Supervisors, assembly and fabrication	10	10	1.6
J11 Central control and process operators in manufacturing and processing	270	290	1.7
J12 Machine operators and related workers in metal and mineral products processing	30	30	0.4
J13 Machine operators and related workers in chemical, plastic and rubber processing	90	90	0.2
J14 Machine operators and related workers in pulp and paper production and wood processing	280	320	2.4
J15 Machine operators and related workers in textile processing	10	10	0.7

# Northern Lights College Region

## Projected Annual Growth Rates in Occupational Demand

	Estimated Employment		Avg Annual % Chng Over 5 Years
	<u>2008</u>	<u>2013</u>	<u>2008 to 2013</u>
J16 Machine operators and related workers in fabric, fur and leather products manufacturing	20	20	0.4
J17 Machine operators and related workers in food, beverage and tobacco processing	60	60	1.1
J18 Printing machine operators and related occupations	40	40	0.2
J19 Machining, metalworking, woodworking and related machine operators	60	60	1.6
J21 Mechanical, electrical and electronics assemblers	20	30	1.3
J22 Other assembly and related occupations	120	130	1.6
J31 Labourers in processing, manufacturing and utilities	470	510	1.9

## **Appendix 5**

### **Projected Annual Growth Rates in Occupational Demand (4-digit)**

# Northern Lights College Region

## Projected Annual Growth Rates in Occupational Demand

	Estimated Employment		Avg Annual % Chng Over 5 Years
	2008	2013	2008 to 2013
All occupations	44,800	46,810	0.9
A Management occupations	4,020	4,190	0.8
A0 Senior management occupations	340	360	1.1
A01 Legislators and senior management	340	360	1.1
A011 Legislators	20	20	0.0
A012 Senior government managers and officials	30	30	0.0
A013 Senior managers - Financial, communications and other business services	50	50	1.1
A014 Senior managers - Health, education, social and community services and membership organizations	30	30	1.0
A015 Senior managers - Trade, broadcasting and other services, n.e.c.	50	50	1.1
A016 Senior managers - Goods production, utilities, transportation and construction	150	160	1.5
A1 Specialist managers	640	670	1.2
A11 Administrative services managers	240	250	1.0
A111 Financial managers	100	110	1.0
A112 Human resources managers	50	50	0.9
A113 Purchasing managers	10	10	0.5
A114 Other administrative services managers	80	90	1.2
A12 Managers in engineering, architecture, science and information systems	50	50	0.7
A121 Engineering managers	20	20	0.5
A122 Computer and information systems managers	30	30	0.9
A123 Architecture and science managers	10	20	2.1
A13 Sales, marketing and advertising managers	240	260	1.5
A131 Sales, marketing and advertising managers	240	250	1.5
A14 Facility operation and maintenance managers	110	110	1.1
A141 Facility operation and maintenance managers	100	110	1.0
A2 Managers in retail trade, food and accommodation services	1,440	1,510	1.0
A21 Managers in retail trade	1,000	1,050	0.9
A211 Retail trade managers	1,010	1,050	0.9
A22 Managers in food service and accommodation	430	460	1.4
A221 Restaurant and food service managers	250	270	1.3
A222 Accommodation service managers	180	190	1.4
A3 Other managers, n.e.c.	1,610	1,650	0.5
A30 Managers in financial and business services	270	280	0.9
A301 Insurance, real estate and financial brokerage managers	160	160	0.9
A302 Banking, credit and other investment managers	110	110	1.0
A303 Other business services managers	10	10	1.0
A31 Managers in communication (except broadcasting)	20	20	1.1
A311 Telecommunication carriers managers	10	10	1.1
A312 Postal and courier services managers	20	20	1.1
A32 Managers in health, education, social and community services	180	180	0.5
A321 Managers in health care	30	30	1.9
A322 Administrators - Post-secondary education and vocational training	20	20	-0.1
A323 School principals and administrators of elementary and secondary education	90	90	-0.1
A324 Managers in social, community and correctional services	30	40	1.3
A33 Managers in public administration	20	20	0.3

# Northern Lights College Region

## Projected Annual Growth Rates in Occupational Demand

	Estimated Employment		Avg Annual % Chng Over 5 Years
	2008	2013	2008 to 2013
A331 Government managers - Health and social policy development and program administration	-	-	-
A332 Government managers - Economic analysis, policy development and program administration	10	10	0.2
A333 Government managers - Education policy development and program administration	-	-	-
A334 Other managers in public administration	10	10	0.1
A34 Managers in art, culture, recreation and sport	50	50	0.9
A341 Library, archive, museum and art gallery managers	10	10	0.8
A342 Managers - Publishing, motion pictures, broadcasting and performing arts	10	10	0.9
A343 Recreation, sports and fitness program and service directors	30	30	0.8
A35 Managers in protective service	50	50	1.0
A351 Commissioned police officers	-	-	-
A352 Fire chiefs and senior firefighting officers	20	20	2.4
A353 Commissioned officers, armed forces	30	30	0.0
A36 Managers in other services	90	90	1.0
A361 Other services managers	80	80	0.8
A37 Managers in construction and transportation	520	490	-1.2
A371 Construction managers	300	280	-1.4
A372 Residential home builders and renovators	150	140	-1.8
A373 Transportation managers	70	70	1.0
A38 Managers in primary production (except agriculture)	290	330	2.7
A381 Primary production managers (except agriculture)	290	330	2.7
A39 Managers in manufacturing and utilities	140	140	0.7
A391 Manufacturing managers	80	80	1.2
A392 Utilities managers	60	50	0.0
B Business, finance and administrative occupations	6,290	6,570	0.9
B0 Professional occupations in business and finance	620	640	0.9
B01 Auditors, accountants and investment professionals	490	510	0.9
B011 Financial auditors and accountants	320	330	0.9
B012 Financial and investment analysts	30	30	0.9
B013 Securities agents, investment dealers and brokers	30	30	0.9
B014 Other financial officers	110	120	1.0
B02 Human resources and business service professionals	120	130	1.0
B021 Specialists in human resources	50	50	0.7
B022 Professional occupations in business services to management	70	80	1.3
B1 Finance and insurance administration occupations	830	860	0.8
B11 Finance and insurance administrative occupations	830	860	0.8
B111 Bookkeepers	670	700	0.8
B112 Loan officers	70	70	1.0
B113 Insurance adjusters and claims examiners	40	40	0.9
B114 Insurance underwriters	10	10	1.0
B115 Assessors, valuers and appraisers	30	30	0.7
B116 Customs, ship and other brokers	10	10	1.0
B2 Secretaries	790	820	0.7
B21 Secretaries, recorders and transcriptionists	790	820	0.7
B211 Secretaries (except legal and medical)	680	700	0.7

# Northern Lights College Region

## Projected Annual Growth Rates in Occupational Demand

	Estimated Employment		Avg Annual % Chng Over 5 Years
	2008	2013	2008 to 2013
B212 Legal secretaries	80	80	0.8
B213 Medical secretaries	10	10	1.8
B214 Court recorders and medical transcriptionists	20	20	1.3
B3 Administrative and regulatory occupations	780	810	0.8
B31 Administrative and regulatory occupations	780	810	0.8
B311 Administrative officers	490	510	0.9
B312 Executive assistants	40	40	0.5
B313 Personnel and recruitment officers	20	20	0.4
B314 Property administrators	120	130	0.8
B315 Purchasing agents and officers	50	50	0.4
B316 Conference and event planners	20	20	0.8
B317 Court officers and justices of the peace	-	-	-
B318 Immigration, employment insurance and revenue officers	30	30	0.0
B4 Clerical supervisors	160	170	1.1
B41 Clerical supervisors	160	170	1.1
B411 Supervisors, general office and administrative support clerks	20	20	0.7
B412 Supervisors, finance and insurance clerks	30	30	0.8
B413 Supervisors, library, correspondence and related information clerks	30	30	0.8
B414 Supervisors, mail and message distribution occupations	30	30	1.1
B415 Supervisors, recording, distributing and scheduling occupations	50	50	1.5
B5 Clerical occupations	3,120	3270	1.0
B51 Clerical occupations, general office skills	1,030	1080	1.0
B511 General office clerks	610	640	0.8
B513 Records management and filing clerks	40	40	0.9
B514 Receptionists and switchboard operators	370	400	1.2
B52 Office equipment operators	100	110	1.4
B522 Data entry clerks	80	90	1.5
B523 Desktop publishing operators and related occupations	-	-	-
B524 Telephone operators	20	20	0.9
B53 Finance and insurance clerks	590	620	0.9
B531 Accounting and related clerks	270	280	0.9
B532 Payroll clerks	60	60	0.8
B533 Customer service representatives - Financial services	220	230	1.0
B534 Banking, insurance and other financial clerks	50	50	1.0
B535 Collectors	10	10	0.7
B54 Administrative support clerks	210	210	0.9
B541 Administrative clerks	180	190	0.9
B542 Personnel clerks	10	20	0.8
B543 Court clerks	10	10	0.0
B55 Library, correspondence and related information clerks	390	410	0.7
B551 Library clerks	20	20	0.8
B552 Correspondence, publication and related clerks	10	10	0.8
B553 Customer service, information and related clerks	290	300	0.8
B554 Survey interviewers and statistical clerks	70	70	0.3
B56 Mail and message distribution occupations	300	310	1.0
B561 Mail, postal and related clerks	90	100	1.1
B562 Letter carriers	100	110	1.1

# Northern Lights College Region

## Projected Annual Growth Rates in Occupational Demand

	Estimated Employment		Avg Annual % Chng Over 5 Years
	2008	2013	2008 to 2013
B563 Couriers, messengers and door-to-door distributors	110	110	1.0
B57 Recording, scheduling and distributing occupations	500	530	1.1
B571 Shippers and receivers	170	180	1.3
B572 Storekeepers and parts clerks	110	120	1.1
B573 Production clerks	20	20	0.6
B574 Purchasing and inventory clerks	90	90	1.0
B575 Dispatchers and radio operators	100	110	1.2
B576 Transportation route and crew schedulers	10	10	1.0
C Natural and applied sciences and related occupations	2,270	2410	1.2
C0 Professional occupations in natural and applied sciences	830	880	1.3
C01 Physical science professionals	100	110	2.2
C011 Physicists and astronomers	-	-	-
C012 Chemists	10	10	1.1
C013 Geologists, geochemists and geophysicists	80	90	2.4
C014 Meteorologists	-	-	-
C015 Other professional occupations in physical sciences	10	10	1.7
C02 Life science professionals	150	160	1.4
C021 Biologists and related scientists	50	50	0.6
C022 Forestry professionals	80	80	1.8
C023 Agricultural representatives, consultants and specialists	20	20	1.8
C03 Civil, mechanical, electrical and chemical engineers	200	210	0.7
C031 Civil engineers	100	100	0.2
C032 Mechanical engineers	50	50	0.9
C033 Electrical and electronics engineers	30	30	0.4
C034 Chemical engineers	20	20	1.6
C04 Other engineers	150	160	1.6
C041 Industrial and manufacturing engineers	20	20	1.0
C042 Metallurgical and materials engineers	-	-	-
C043 Mining engineers	30	30	1.1
C044 Geological engineers	20	20	0.8
C045 Petroleum engineers	60	70	2.4
C046 Aerospace engineers	-	-	-
C047 Computer engineers (except software engineers)	20	20	1.3
C048 Other professional engineers, n.e.c.	-	10	-
C05 Architects, urban planners and land surveyors	100	110	1.0
C051 Architects	20	20	0.2
C052 Landscape architects	-	-	-
C053 Urban and land use planners	20	20	0.3
C054 Land surveyors	60	60	1.5
C06 Mathematicians, statisticians and actuaries	-	-	-
C061 Mathematicians, statisticians and actuaries	-	-	-
C07 Computer and information systems professionals	150	160	1.2
C071 Information systems analysts and consultants	60	60	0.9
C072 Database analysts and data administrators	10	10	1.1
C073 Software engineers and designers	10	10	1.1
C074 Computer programmers and interactive media developers	50	50	1.1
C075 Web designers and developers	30	30	1.2

# Northern Lights College Region

## Projected Annual Growth Rates in Occupational Demand

	Estimated Employment		Avg Annual % Chng Over 5 Years
	2008	2013	2008 to 2013
C1 Technical occupations related to natural and applied sciences	1,440	1,530	1.2
C11 Technical occupations in physical sciences	210	230	2.0
C111 Chemical technologists and technicians	40	50	0.4
C112 Geological and mineral technologists and technicians	150	170	2.5
C113 Meteorological technicians	-	-	-
C12 Technical occupations in life sciences	210	220	1.1
C121 Biological technologists and technicians	40	40	0.8
C122 Agricultural and fish products inspectors	10	10	0.5
C123 Forestry technologists and technicians	90	100	1.8
C124 Conservation and fishery officers	20	20	0.2
C125 Landscape and horticultural technicians and specialists	40	40	0.8
C13 Technical occupations in civil, mechanical and industrial engineering	90	90	0.0
C131 Civil engineering technologists and technicians	30	30	0.3
C132 Mechanical engineering technologists and technicians	20	20	0.5
C133 Industrial engineering and manufacturing technologists and technicians	10	10	0.9
C134 Construction estimators	40	40	-0.5
C14 Technical occupations in electronics and electrical engineering	270	290	1.1
C141 Electrical and electronics engineering technologists and technicians	70	70	0.6
C142 Electronic service technicians (household and business equipment)	130	140	1.1
C143 Industrial instrument technicians and mechanics	60	70	2.0
C144 Aircraft instrument, electrical and avionics mechanics, technicians and inspectors	20	20	0.9
C15 Technical occupations in architecture, drafting, surveying and mapping	130	140	0.9
C151 Architectural technologists and technicians	10	10	0.5
C152 Industrial designers	10	10	0.5
C153 Drafting technologists and technicians	70	70	0.6
C154 Land survey technologists and technicians	10	10	0.5
C155 Mapping and related technologists and technicians	30	40	1.6
C16 Other technical inspectors and regulatory officers	190	210	1.4
C161 Non-destructive testers and inspectors	40	40	2.6
C162 Engineering inspectors and regulatory officers	20	20	2.3
C163 Inspectors in public and environmental health and occupational health and safety	90	100	1.6
C164 Construction inspectors	50	60	0.2
C17 Transportation officers and controllers	220	230	1.1
C171 Air pilots, flight engineers and flying instructors	110	120	1.2
C172 Air traffic control and related occupations	20	20	1.0
C173 Deck officers, water transport	60	70	1.1
C174 Engineer officers, water transport	20	20	1.0
C175 Railway traffic controllers and marine traffic regulators	-	-	-
C18 Technical occupations in computer and information systems	120	130	0.9
C181 Computer network technicians	50	50	0.8
C182 User support technicians	80	80	1.0
C183 Systems testing technicians	-	-	-
D Health occupations	1,630	1,780	1.9
D0 Professional occupations in health	270	290	1.7
D01 Physicians, dentists and veterinarians	130	150	1.9

# Northern Lights College Region

## Projected Annual Growth Rates in Occupational Demand

	Estimated Employment		Avg Annual % Chng Over 5 Years
	2008	2013	2008 to 2013
D011 Specialist physicians	30	30	2.0
D012 General practitioners and family physicians	60	60	2.0
D013 Dentists	20	30	2.0
D014 Veterinarians	20	20	1.5
D02 Optometrists, chiropractors and other health diagnosing and treating professionals	20	20	2.0
D021 Optometrists	-	10	-
D022 Chiropractors	10	10	2.0
D023 Other professional occupations in health diagnosing and treating	-	-	-
D03 Pharmacists, dietitians and nutritionists	60	60	1.1
D031 Pharmacists	50	50	0.9
D032 Dietitians and nutritionists	10	10	1.9
D04 Therapy and assessment professionals	60	60	1.8
D041 Audiologists and speech-language pathologists	10	10	1.0
D042 Physiotherapists	20	30	2.0
D043 Occupational therapists	10	20	2.0
D044 Other professional occupations in therapy and assessment	10	10	1.6
D1 Nurse supervisors and registered nurses	440	480	2.0
D11 Nurse supervisors and registered nurses	440	480	2.0
D111 Head nurses and supervisors	10	10	1.9
D112 Registered nurses	430	470	2.0
D2 Technical and related occupations in health	430	470	1.8
D21 Medical technologists and technicians (except dental health)	130	140	1.9
D211 Medical laboratory technologists and pathologists' assistants	30	30	2.0
D212 Medical laboratory technicians	30	30	2.0
D213 Veterinary and animal health technologists and technicians	30	30	1.5
D214 Respiratory therapists, clinical perfusionists and cardio-pulmonary technologists	10	10	1.9
D215 Medical radiation technologists	30	30	2.0
D216 Medical sonographers	-	-	-
D217 Cardiology technologists	-	-	-
D218 Electroencephalographic and other diagnostic technologists, n.e.c.	-	-	-
D219 Other medical technologists and technicians (except dental health)	-	-	-
D22 Technical occupations in dental health care	30	30	1.8
D221 Denturists	-	-	-
D222 Dental hygienists and dental therapists	20	30	2.0
D223 Dental technologists, technicians and laboratory bench workers	10	10	1.3
D23 Other technical occupations in health care (except dental)	260	290	1.8
D231 Opticians	10	10	1.3
D232 Midwives and practitioners of natural healing	10	20	1.8
D233 Licensed practical nurses	70	80	2.0
D234 Ambulance attendants and other paramedical occupations	120	130	1.9
D235 Other technical occupations in therapy and assessment	50	50	1.3
D3 Assisting occupations in support of health services	490	540	1.9
D31 Assisting occupations in support of health services	490	540	1.9
D311 Dental assistants	70	80	2.0
D312 Nurse aides, orderlies and patient service associates	310	340	2.0
D313 Other assisting occupations in support of health services	110	110	1.3
E Occupations in social science, education, government service and religion	2,670	2,740	0.6

# Northern Lights College Region

## Projected Annual Growth Rates in Occupational Demand

	Estimated Employment		Avg Annual % Chng Over 5 Years
	2008	2013	2008 to 2013
E0 Judges, lawyers, psychologists, social workers, ministers of religion, and policy and program officers	620	650	0.9
E01 Judges, lawyers and Quebec notaries	100	110	0.8
E011 Judges	-	-	-
E012 Lawyers and Quebec notaries	100	110	0.8
E02 Psychologists, social workers, counsellors, clergy and probation officers	280	300	1.1
E021 Psychologists	20	20	1.2
E022 Social workers	90	90	1.2
E023 Family, marriage and other related counsellors	60	70	1.7
E024 Ministers of religion	100	100	0.8
E025 Probation and parole officers and related occupations	20	20	0.1
E03 Policy and program officers, researchers and consultants	240	250	0.7
E031 Natural and applied science policy researchers, consultants and program officers	30	30	0.6
E032 Economists and economic policy researchers and analysts	10	10	0.5
E033 Business development officers and marketing researchers and consultants	60	60	0.9
E034 Social policy researchers, consultants and program officers	30	30	0.6
E035 Education policy researchers, consultants and program officers	30	30	0.0
E036 Recreation, sports and fitness program supervisors and consultants	30	30	1.0
E037 Program officers unique to government	20	20	0.0
E038 Other professional occupations in social science, n.e.c.	10	10	1.0
E039 Health policy researchers, consultants and program officers	20	30	1.3
E1 Teachers and professors	1,310	1,300	-0.1
E11 University professors and assistants	120	120	-0.1
E111 University professors	70	70	-0.1
E112 Post-secondary teaching and research assistants	50	50	-0.1
E12 College and other vocational instructors	200	200	0.1
E121 College and other vocational instructors	200	200	0.1
E13 Secondary and elementary school teachers and educational counsellors	1,000	990	-0.1
E131 Secondary school teachers	350	350	-0.1
E132 Elementary school and kindergarten teachers	590	590	-0.1
E133 Educational counsellors	50	50	-0.1
E2 Paralegals, social services workers and occupations in education and religion, n.e.c.	720	780	1.4
E21 Paralegals, social services workers and occupations in education and religion, n.e.c.	730	780	1.4
E211 Paralegal and related occupations	70	70	0.8
E212 Community and social service workers	260	280	1.5
E213 Employment counsellors	40	40	0.9
E214 Instructors and teachers of persons with disabilities	10	10	0.5
E215 Other instructors	50	50	0.0
E216 Other religious occupations	20	20	0.8
E217 Early childhood educators and assistants	290	310	1.9
F Occupations in art, culture, recreation and sport	880	910	0.8
F0 Professional occupations in art and culture	310	320	0.7
F01 Librarians, archivists, conservators and curators	20	20	0.9
F011 Librarians	20	20	0.9
F012 Conservators and curators	-	-	-

# Northern Lights College Region

## Projected Annual Growth Rates in Occupational Demand

	Estimated Employment		Avg Annual % Chng Over 5 Years
	2008	2013	2008 to 2013
F013 Archivists	-	-	-
F02 Writing, translating and public relations professionals	120	130	0.8
F021 Authors and writers	50	50	1.3
F022 Editors	20	20	0.9
F023 Journalists	20	20	0.8
F024 Professional occupations in public relations and communications	40	40	0.8
F025 Translators, terminologists and interpreters	10	10	0.6
F03 Creative and performing artists	160	170	0.5
F031 Producers, directors, choreographers and related occupations	10	10	1.0
F032 Conductors, composers and arrangers	-	-	-
F033 Musicians and singers	70	70	0.1
F034 Dancers	20	20	-0.1
F035 Actors and comedians	10	10	1.0
F036 Painters, sculptors and other visual artists	50	60	0.9
F1 Technical occupations in art, culture, recreation and sport	570	590	0.8
F11 Technical occupations in libraries, archives, museums and art galleries	40	40	0.6
F111 Library and archive technicians and assistants	30	30	0.4
F112 Technical occupations related to museums and art galleries	10	10	0.9
F12 Photographers, graphic arts technicians and technical and co-ordinating occupations in motion pictures, broadcasting and the performing arts	70	80	1.1
F121 Photographers	30	40	1.4
F122 Film and video camera operators	10	10	1.0
F123 Graphic arts technicians	-	-	-
F124 Broadcast technicians	10	10	0.5
F125 Audio and video recording technicians	10	10	0.6
F126 Other technical and co-ordinating occupations in motion pictures, broadcasting and the performing arts	10	10	0.9
F127 Support occupations in motion pictures, broadcasting and the performing arts	10	10	0.8
F13 Announcers and other performers	20	20	1.0
F131 Announcers and other broadcasters	20	20	1.0
F132 Other performers	-	-	-
F14 Creative designers and craftspersons	190	200	0.7
F141 Graphic designers and illustrators	70	80	0.5
F142 Interior designers	40	40	0.6
F143 Theatre, fashion, exhibit and other creative designers	10	10	0.9
F144 Artisans and craftspersons	70	80	0.9
F145 Patternmakers - Textile, leather and fur products	-	-	-
F15 Athletes, coaches, referees and related occupations	240	250	0.8
F151 Athletes	10	10	0.9
F152 Coaches	30	30	0.4
F153 Sports officials and referees	20	20	0.9
F154 Program leaders and instructors in recreation, sport and fitness	190	190	0.8
G Sales and service occupations	10,070	10,570	1.0
G0 Sales and service supervisors	320	340	1.0
G01 Sales and service supervisors	320	340	1.0
G011 Retail trade supervisors	170	180	0.9
G012 Food service supervisors	90	100	1.3

# Northern Lights College Region

## Projected Annual Growth Rates in Occupational Demand

	Estimated Employment		Avg Annual % Chng Over 5 Years
	2008	2013	2008 to 2013
G013 Executive housekeepers	20	20	1.2
G014 Dry cleaning and laundry supervisors	-	-	-
G015 Cleaning supervisors	20	20	0.6
G016 Other service supervisors	20	20	1.1
G1 Wholesale, technical, insurance, real estate sales specialists, and retail, wholesale and grain buyers	640	680	1.2
G11 Sales representatives, wholesale trade	290	310	1.4
G111 Sales representatives, wholesale trade (non-technical)	290	310	1.4
G12 Technical sales specialists, wholesale trade	80	80	1.3
G121 Technical sales specialists, wholesale trade	80	90	1.5
G13 Insurance and real estate sales occupations and buyers	270	280	0.9
G131 Insurance agents and brokers	120	120	1.0
G132 Real estate agents and salespersons	110	110	0.7
G133 Retail and wholesale buyers	40	40	1.1
G134 Grain elevator operators	-	-	-
G2 Retail salespersons and sales clerks	1,920	2,010	0.9
G21 Retail salespersons and sales clerks	1,920	2,000	0.9
G211 Retail salespersons and sales clerks	1,920	2,000	0.9
G3 Cashiers	860	890	0.9
G31 Cashiers	850	890	0.9
G311 Cashiers	860	890	0.9
G4 Chefs and cooks	690	730	1.4
G41 Chefs and cooks	690	740	1.4
G411 Chefs	100	110	1.3
G412 Cooks	590	630	1.4
G5 Occupations in food and beverage service	660	700	1.3
G51 Occupations in food and beverage service	660	700	1.3
G511 Maitres d'hôtel and hosts/hostesses	50	60	1.3
G512 Bartenders	100	100	1.3
G513 Food and beverage servers	510	540	1.4
G6 Occupations in protective services	460	470	0.5
G61 Police officers and firefighters	180	180	0.4
G611 Police officers (except commissioned)	110	110	0.0
G612 Firefighters	70	70	1.1
G62 Other occupations in protective service	150	150	0.1
G621 Sheriffs and bailiffs	10	10	0.4
G622 Correctional service officers	50	50	0.0
G623 By-law enforcement and other regulatory officers, n.e.c.	20	20	0.2
G624 Other ranks, armed forces	50	50	0.0
G625 Other protective service occupations	20	20	0.4
G63 Security guards and related occupations	130	140	1.0
G631 Security guards and related occupations	130	140	1.0
G7 Occupations in travel and accommodation, including attendants in recreation and sport	400	420	1.1
G71 Occupations in travel and accommodation	200	210	1.2
G711 Travel counsellors	40	50	0.9
G712 Purser and flight attendants	10	10	1.1
G713 Airline sales and service agents	30	40	1.1

# Northern Lights College Region

## Projected Annual Growth Rates in Occupational Demand

	Estimated Employment		Avg Annual % Chng Over 5 Years
	2008	2013	2008 to 2013
G714 Ticket agents, cargo service representatives and related clerks (except airline)	10	20	1.1
G715 Hotel front desk clerks	100	100	1.4
G72 Tour and recreational guides and casino occupations	90	90	1.0
G721 Tour and travel guides	30	30	0.9
G722 Outdoor sport and recreational guides	40	40	1.0
G723 Casino occupations	30	30	1.0
G73 Other occupations in travel, accommodation, amusement and recreation	110	110	1.2
G731 Operators and attendants in amusement, recreation and sport	90	100	1.2
G732 Other attendants in accommodation and travel	10	10	1.2
G8 Child care and home support workers	700	730	0.7
G81 Child care and home support workers	700	730	0.7
G811 Visiting homemakers, housekeepers and related occupations	210	220	1.6
G812 Elementary and secondary school teacher assistants	300	300	-0.1
G814 Babysitters, nannies and parents' helpers	190	200	1.1
G9 Sales and service occupations, n.e.c.	3,430	3,600	1.0
G91 Technical occupations in personal service	220	230	0.8
G911 Hairstylists and barbers	210	220	0.8
G912 Funeral directors and embalmers	10	10	0.8
G92 Other occupations in personal service	150	160	0.9
G921 Image, social and other personal consultants	10	10	0.9
G922 Estheticians, electrologists and related occupations	80	90	0.8
G923 Pet groomers and animal care workers	50	50	0.9
G924 Other personal service occupations	-	-	-
G93 Cleaners	1,340	1,400	0.9
G931 Light duty cleaners	510	540	1.1
G932 Specialized cleaners	160	170	1.2
G933 Janitors, caretakers and building superintendents	670	690	0.6
G94 Butchers and bakers, retail and wholesale	160	170	1.0
G941 Butchers, meat cutters and fishmongers, retail and wholesale	70	70	0.9
G942 Bakers	90	90	1.0
G96 Food counter attendants, kitchen helpers and related occupations	830	890	1.3
G961 Food counter attendants, kitchen helpers and related occupations	830	890	1.3
G97 Other sales and related occupations	630	650	0.9
G971 Service station attendants	130	140	0.8
G972 Grocery clerks and store shelf stockers	400	420	0.9
G973 Other elemental sales occupations	90	100	1.0
G98 Other elemental service occupations	100	100	0.9
G981 Dry cleaning and laundry occupations	50	50	1.1
G982 Ironing, pressing and finishing occupations	10	10	0.8
G983 Other elemental service occupations	40	40	0.7
H Trades, transport and equipment operators and related occupations	11,110	11,200	0.2
H0 Contractors and supervisors in trades and transportation	590	590	-0.1
H01 Contractors and supervisors, trades and related workers	560	550	-0.1
H011 Supervisors, machinists and related occupations	10	20	2.2
H012 Contractors and supervisors, electrical trades and telecommunications occupations	60	60	-0.2

# Northern Lights College Region

## Projected Annual Growth Rates in Occupational Demand

	Estimated Employment		Avg Annual % Chng Over 5 Years
	2008	2013	2008 to 2013
H013 Contractors and supervisors, pipefitting trades	30	40	1.0
H014 Contractors and supervisors, metal forming, shaping and erecting trades	20	20	-0.2
H015 Contractors and supervisors, carpentry trades	80	80	-1.0
H016 Contractors and supervisors, mechanic trades	70	70	1.1
H017 Contractors and supervisors, heavy construction equipment crews	160	160	0.4
H018 Supervisors, printing and related occupations	-	-	-
H019 Contractors and supervisors, other construction trades, installers, repairers and servicers	110	100	-1.7
H02 Supervisors, railway and motor transportation occupations	50	50	1.4
H021 Supervisors, railway transport operations	10	10	1.1
H022 Supervisors, motor transport and other ground transit operators	30	40	1.5
H1 Construction trades	2,330	2,180	-1.3
H11 Plumbers, pipefitters and gas fitters	420	420	0.0
H111 Plumbers	180	170	-1.5
H112 Steamfitters, pipefitters and sprinkler system installers	190	210	1.6
H113 Gas fitters	50	50	-0.6
H12 Carpenters and cabinetmakers	1,010	930	-1.6
H121 Carpenters	970	890	-1.7
H122 Cabinetmakers	40	40	-0.8
H13 Masonry and plastering trades	340	310	-1.8
H131 Bricklayers	60	50	-1.8
H132 Concrete finishers	50	50	-1.8
H133 Tilesetters	40	40	-1.9
H134 Plasterers, drywall installers and finishers and lathers	190	170	-1.9
H14 Other construction trades	560	520	-1.3
H141 Roofers and shinglers	120	110	-1.9
H142 Glaziers	30	30	-0.7
H143 Insulators	80	80	0.9
H144 Painters and decorators	240	220	-1.6
H145 Floor covering installers	90	80	-1.6
H2 Stationary engineers, power station operators and electrical trades and telecommunications occupations	760	750	-0.4
H21 Electrical trades and telecommunications occupations	680	660	-0.5
H211 Electricians (except industrial and power system)	310	280	-1.8
H212 Industrial electricians	160	170	1.3
H213 Power system electricians	50	50	-0.1
H214 Electrical power line and cable workers	100	100	-0.4
H215 Telecommunications line and cable workers	20	20	0.3
H216 Telecommunications installation and repair workers	30	30	0.7
H217 Cable television service and maintenance technicians	10	10	0.8
H22 Stationary engineers and power station and system operators	80	80	0.8
H221 Stationary engineers and auxiliary equipment operators	50	50	1.1
H222 Power systems and power station operators	30	30	-0.1
H3 Machinists, metal forming, shaping and erecting occupations	500	520	0.9
H31 Machinists and related occupations	40	50	1.3
H311 Machinists and machining and tooling inspectors	40	40	1.3
H312 Tool and die makers	-	-	-
H32 Metal forming, shaping and erecting trades	440	460	0.8

# Northern Lights College Region

## Projected Annual Growth Rates in Occupational Demand

	Estimated Employment		Avg Annual % Chng Over 5 Years
	2008	2013	2008 to 2013
H321 Sheet metal workers	60	60	-1.3
H322 Boilermakers	30	30	2.0
H323 Structural metal and platework fabricators and fitters	20	20	0.6
H324 Ironworkers	30	30	-1.2
H325 Blacksmiths and die setters	-	-	-
H326 Welders and related machine operators	300	320	1.4
H4 Mechanics	1,350	1,420	1.0
H41 Machinery and transportation equipment mechanics (except motor vehicle)	790	840	1.1
H411 Construction millwrights and industrial mechanics (except textile)	360	390	1.6
H412 Heavy-duty equipment mechanics	290	310	1.0
H413 Refrigeration and air conditioning mechanics	50	40	-1.4
H414 Railway carmen/women	10	20	1.2
H415 Aircraft mechanics and aircraft inspectors	60	60	1.1
H416 Machine fitters	10	10	2.1
H417 Textile machinery mechanics and repairers	-	-	-
H418 Elevator constructors and mechanics	10	10	-1.6
H42 Automotive service technicians	490	510	0.9
H421 Automotive service technicians, truck and bus mechanics and mechanical repairers	410	420	0.9
H422 Motor vehicle body repairers	80	80	0.8
H43 Other mechanics	80	80	0.6
H431 Oil and solid fuel heating mechanics	-	-	-
H432 Electric appliance servicers and repairers	20	20	0.4
H433 Electrical mechanics	10	10	0.4
H434 Motorcycle and other related mechanics	10	10	1.0
H435 Other small engine and equipment mechanics	30	30	0.9
H5 Other trades, n.e.c.	370	370	0.0
H51 Upholsterers, tailors, shoe repairers, jewellers and related occupations	50	50	0.7
H511 Upholsterers	10	10	0.7
H512 Tailors, dressmakers, furriers and milliners	20	20	0.6
H513 Shoe repairers and shoemakers	-	-	-
H514 Jewellers, watch repairers and related occupations	10	10	0.8
H52 Printing press operators, commercial divers and other trades and related occupations, n.e.c.	70	70	1.2
H521 Printing press operators	10	10	-1.0
H522 Commercial divers	10	10	0.7
H523 Other trades and related occupations	50	60	1.6
H53 Other installers, repairers and servicers	270	260	-0.4
H531 Residential and commercial installers and servicers	140	130	-1.3
H532 Waterworks and gas maintenance workers	40	40	0.5
H533 Automotive mechanical installers and servicers	50	50	0.8
H534 Pest controllers and fumigators	-	10	-
H535 Other repairers and servicers	40	40	0.9
H6 Heavy equipment and crane operators, including drillers	1,040	1,060	0.3
H61 Heavy equipment operators	930	950	0.3
H611 Heavy equipment operators (except crane)	880	890	0.3
H612 Public works maintenance equipment operators	60	60	0.5
H62 Crane operators, drillers and blasters	110	110	0.6

# Northern Lights College Region

## Projected Annual Growth Rates in Occupational Demand

	Estimated Employment		Avg Annual % Chng Over 5 Years
	2008	2013	2008 to 2013
H621 Crane operators	40	40	-0.5
H622 Drillers and blasters - Surface mining, quarrying and construction	50	60	1.6
H623 Water well drillers	20	20	0.5
H7 Transportation equipment operators and related workers, excluding labourers	2,520	2,680	1.2
H71 Motor vehicle and transit drivers	2,280	2,420	1.2
H711 Truck drivers	1,700	1,810	1.3
H712 Bus drivers and subway and other transit operators	190	200	0.9
H713 Taxi and limousine drivers and chauffeurs	120	120	1.1
H714 Delivery and courier service drivers	270	290	1.2
H72 Train crew operating occupations	90	100	1.1
H721 Railway and yard locomotive engineers	40	40	1.1
H722 Railway conductors and brakemen/women	50	50	1.1
H73 Other transport equipment operators and related workers	150	150	1.0
H731 Railway yard workers	10	10	1.3
H732 Railway track maintenance workers	30	40	1.0
H733 Deck crew, water transport	60	60	1.0
H734 Engine room crew, water transport	-	-	-
H735 Lock and cable ferry operators and related occupations	20	20	0.9
H736 Boat operators	10	10	1.3
H737 Air transport ramp attendants	10	10	1.1
H8 Trades helpers, construction and transportation labourers and related occupations	1,640	1,630	-0.1
H81 Longshore workers and material handlers	520	560	1.3
H811 Longshore workers	30	40	0.9
H812 Material handlers	490	520	1.3
H82 Trades helpers and labourers	1,010	970	-0.9
H821 Construction trades helpers and labourers	960	920	-1.0
H822 Other trades helpers and labourers	50	50	0.7
H83 Public works and other labourers, n.e.c.	100	100	0.5
H831 Public works and maintenance labourers	80	80	0.3
H832 Railway and motor transport labourers	30	40	1.4
I Occupations unique to primary industry	4,230	4,660	2.0
I0 Occupations unique to agriculture, excluding labourers	1,080	1,120	0.7
I01 Contractors, operators and supervisors in agriculture, horticulture and aquaculture	590	610	0.6
I011 Farmers and farm managers	480	490	0.6
I012 Agricultural and related service contractors and managers	-	-	-
I013 Farm supervisors and specialized livestock workers	30	30	0.6
I014 Nursery and greenhouse operators and managers	20	20	0.9
I015 Landscaping and grounds maintenance contractors and managers	30	30	0.7
I016 Supervisors, landscape and horticulture	20	20	0.6
I017 Aquaculture operators and managers	10	10	0.6
I02 Agriculture and horticulture workers	490	510	0.7
I021 General farm workers	370	380	0.7
I022 Nursery and greenhouse workers	130	140	0.8
I1 Occupations unique to forestry operations, mining, oil and gas extraction and fishing, excluding labourers	1,720	1,960	2.8
I11 Supervisors, logging and forestry	30	40	3.0
I111 Supervisors, logging and forestry	30	40	3.0

# Northern Lights College Region

## Projected Annual Growth Rates in Occupational Demand

	Estimated Employment		Avg Annual % Chng Over 5 Years
	2008	2013	2008 to 2013
I12 Supervisors, mining, oil and gas	280	310	2.2
I121 Supervisors, mining and quarrying	50	50	-1.5
I122 Supervisors, oil and gas drilling and service	230	270	3.0
I13 Underground miners, oil and gas drillers and related workers	590	670	2.8
I131 Underground production and development miners	220	250	2.3
I132 Oil and gas well drillers, servicers, testers and related workers	370	430	3.1
I14 Mine service workers and operators in oil and gas drilling	510	590	3.1
I141 Underground mine service and support workers	80	90	2.6
I142 Oil and gas well drilling workers and services operators	430	490	3.2
I15 Logging machinery operators	120	130	3.2
I151 Logging machinery operators	120	130	3.2
I16 Logging and forestry workers	160	190	2.7
I161 Chain saw and skidder operators	120	140	3.1
I162 Silviculture and forestry workers	40	40	1.6
I17 Fishing vessel masters and skippers and fishermen/women	10	10	0.2
I171 Fishing masters and officers	-	-	-
I172 Fishing vessel skippers and fishermen/women	10	10	0.2
I18 Other fishing and trapping occupations	-	10	-
I181 Fishing vessel deckhands	-	-	-
I182 Trappers and hunters	10	10	3.4
I2 Primary production labourers	1,430	1,590	2.2
I21 Primary production labourers	1,430	1,580	2.2
I211 Harvesting labourers	80	80	0.6
I212 Landscaping and grounds maintenance labourers	420	430	0.8
I213 Aquaculture and marine harvest labourers	20	20	0.6
I214 Mine labourers	90	100	2.0
I215 Oil and gas drilling, servicing and related labourers	720	830	3.1
I216 Logging and forestry labourers	110	130	2.7
J Occupations unique to processing, manufacturing and utilities	1,640	1,780	1.7
J0 Supervisors in manufacturing	150	170	1.6
J01 Supervisors, processing occupations	140	150	1.7
J011 Supervisors, mineral and metal processing	20	20	2.8
J012 Supervisors, petroleum, gas and chemical processing and utilities	50	50	0.5
J013 Supervisors, food, beverage and tobacco processing	-	-	-
J014 Supervisors, plastic and rubber products manufacturing	-	-	-
J015 Supervisors, forest products processing	60	70	2.2
J016 Supervisors, textile processing	-	-	-
J02 Supervisors, assembly and fabrication	10	10	1.6
J021 Supervisors, motor vehicle assembling	-	-	-
J022 Supervisors, electronics manufacturing	-	-	-
J023 Supervisors, electrical products manufacturing	-	-	-
J024 Supervisors, furniture and fixtures manufacturing	-	-	-
J025 Supervisors, fabric, fur and leather products manufacturing	-	-	-
J026 Supervisors, other mechanical and metal products manufacturing	-	-	-
J027 Supervisors, other products manufacturing and assembly	-	-	-
J1 Machine operators in manufacturing	870	940	1.6
J11 Central control and process operators in manufacturing and processing	270	290	1.7

# Northern Lights College Region

## Projected Annual Growth Rates in Occupational Demand

	Estimated Employment		Avg Annual % Chng Over 5 Years
	2008	2013	2008 to 2013
J111 Central control and process operators, mineral and metal processing	20	20	1.0
J112 Petroleum, gas and chemical process operators	220	240	1.9
J113 Pulping control operators	10	10	0.7
J114 Papermaking and coating control operators	20	20	0.6
J12 Machine operators and related workers in metal and mineral products processing	30	30	0.4
J121 Machine operators, mineral and metal processing	10	10	-0.4
J122 Foundry workers	-	-	-
J123 Glass forming and finishing machine operators and glass cutters	-	-	-
J124 Concrete, clay and stone forming operators	10	10	1.2
J125 Inspectors and testers, mineral and metal processing	10	10	0.3
J13 Machine operators and related workers in chemical, plastic and rubber processing	90	90	0.2
J131 Chemical plant machine operators	-	-	-
J132 Plastics processing machine operators	10	10	2.3
J133 Rubber processing machine operators and related workers	-	-	-
J134 Water and waste plant operators	80	80	-0.1
J14 Machine operators and related workers in pulp and paper production and wood processing	280	320	2.4
J141 Sawmill machine operators	130	150	2.8
J142 Pulp mill machine operators	30	30	0.7
J143 Papermaking and finishing machine operators	10	10	0.8
J144 Other wood processing machine operators	50	50	2.5
J145 Paper converting machine operators	-	-	-
J146 Lumber graders and other wood processing inspectors and graders	60	70	2.6
J15 Machine operators and related workers in textile processing	10	10	0.7
J151 Textile fibre and yarn preparation machine operators	-	-	-
J152 Weavers, knitters and other fabric-making occupations	10	10	0.9
J153 Textile dyeing and finishing machine operators	-	-	-
J154 Textile inspectors, graders and samplers	-	-	-
J16 Machine operators and related workers in fabric, fur and leather products manufacturing	20	20	0.4
J161 Sewing machine operators	10	10	0.4
J162 Fabric, fur and leather cutters	-	-	-
J163 Hide and pelt processing workers	-	-	-
J164 Inspectors and testers, fabric, fur and leather products manufacturing	-	-	-
J17 Machine operators and related workers in food, beverage and tobacco processing	60	60	1.1
J171 Process control and machine operators, food and beverage processing	30	30	1.1
J172 Industrial butchers and meat cutters, poultry preparers and related workers	10	10	1.0
J173 Fish plant workers	20	20	1.2
J174 Tobacco processing machine operators	-	-	-
J175 Testers and graders, food and beverage processing	10	10	1.0
J18 Printing machine operators and related occupations	40	40	0.2
J181 Printing machine operators	10	10	-0.5
J182 Camera, platemaking and other pre-press occupations	-	-	-
J183 Binding and finishing machine operators	-	-	-
J184 Photographic and film processors	30	30	0.9
J19 Machining, metalworking, woodworking and related machine operators	60	60	1.6
J191 Machining tool operators	-	10	-
J192 Forging machine operators	-	-	-

# Northern Lights College Region

## Projected Annual Growth Rates in Occupational Demand

	Estimated Employment		Avg Annual % Chng Over 5 Years
	2008	2013	2008 to 2013
J193 Woodworking machine operators	50	50	2.0
J194 Metalworking machine operators	10	10	1.7
J196 Other metal products machine operators	-	-	-
J197 Other products machine operators	-	-	-
J2 Assemblers in manufacturing	160	170	1.6
J21 Mechanical, electrical and electronics assemblers	20	30	1.3
J211 Aircraft assemblers and aircraft assembly inspectors	-	-	-
J212 Motor vehicle assemblers, inspectors and testers	10	10	1.1
J213 Electronics assemblers, fabricators, inspectors and testers	-	-	-
J214 Assemblers and inspectors, electrical appliance, apparatus and equipment manufacturing	-	-	-
J215 Assemblers, fabricators and inspectors, industrial electrical motors and transformers	-	-	-
J216 Mechanical assemblers and inspectors	-	10	-
J217 Machine operators and inspectors, electrical apparatus manufacturing	-	-	-
J22 Other assembly and related occupations	120	130	1.6
J221 Boat assemblers and inspectors	10	10	0.8
J222 Furniture and fixture assemblers and inspectors	30	30	1.2
J223 Other wood products assemblers and inspectors	50	60	2.6
J224 Furniture finishers and refinishers	10	10	0.4
J225 Plastic products assemblers, finishers and inspectors	10	10	2.5
J226 Painters and coaters, industrial	10	10	0.5
J227 Plating, metal spraying and related operators	-	-	-
J228 Other assemblers and inspectors	10	10	1.0
J3 Labourers in processing, manufacturing and utilities	470	520	1.9
J31 Labourers in processing, manufacturing and utilities	470	510	1.9
J311 Labourers in mineral and metal processing	10	10	1.1
J312 Labourers in metal fabrication	20	20	2.6
J313 Labourers in chemical products processing and utilities	10	10	0.5
J314 Labourers in wood, pulp and paper processing	280	310	2.4
J315 Labourers in rubber and plastic products manufacturing	10	10	2.6
J316 Labourers in textile processing	-	-	-
J317 Labourers in food, beverage and tobacco processing	60	70	1.1
J318 Labourers in fish processing	10	10	1.1
J319 Other labourers in processing, manufacturing and utilities	70	70	1.3