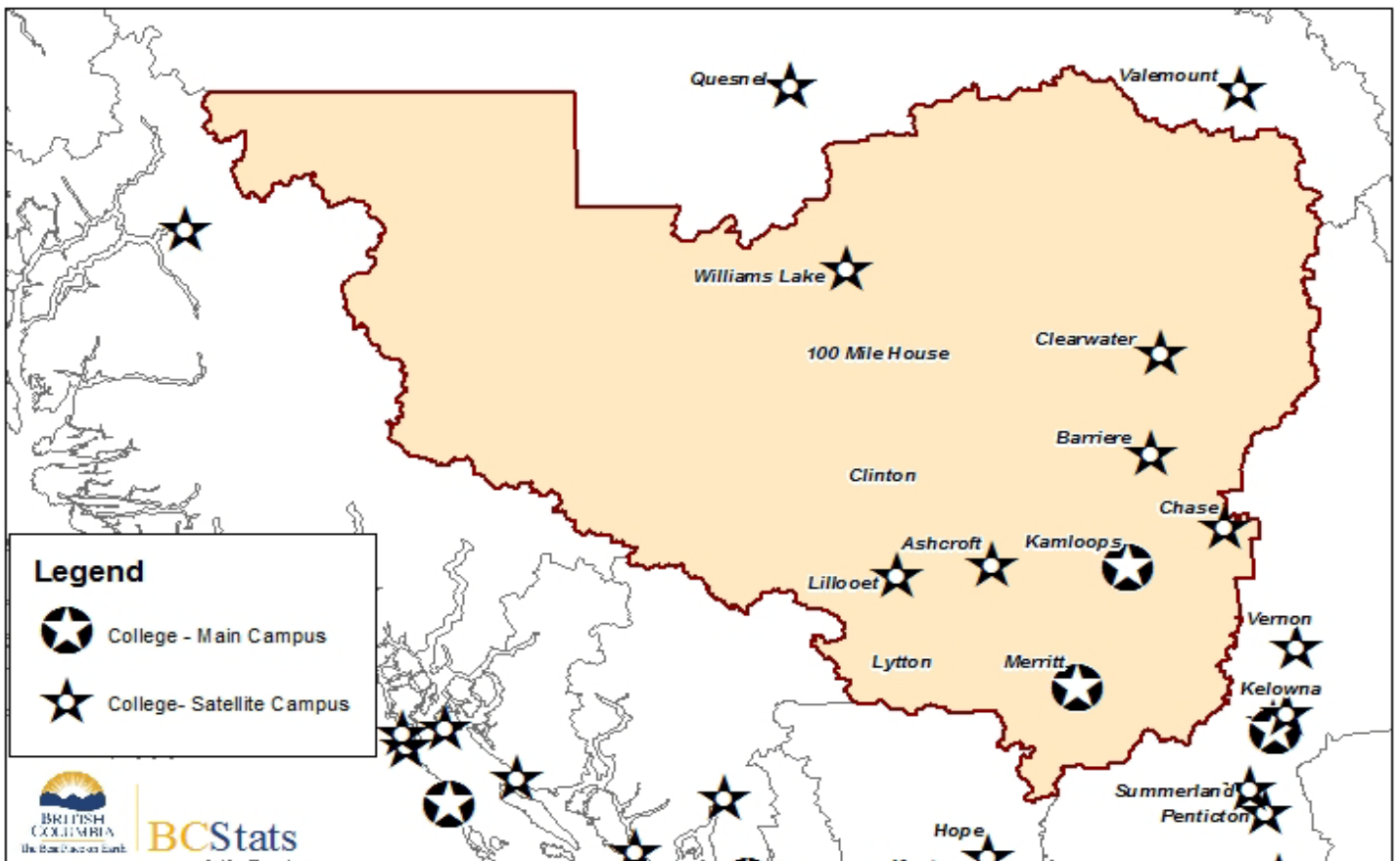


British Columbia: Regional Employment Projection Model
INDUSTRY AND OCCUPATION PROJECTIONS: 2008 to 2013
Thompson Rivers College Region



Geographic Location of Population				
Major Cities	Population 2006 Census	% of Region	Land Area <i>Sq Km</i>	Population Density <i>Persons per Sq Km</i>
Kamloops, C	80,376	48.4	297.3	270.4
Williams Lake, C	10,744	6.5	33.1	324.5
Merritt, C	6,998	4.2	24.9	280.6
Chase, VL	2,409	1.4	3.8	642.4
Lillooet, DM	2,324	1.4	27.8	83.5
Logan Lake, DM	2,162	1.3	325.4	6.6
100 Mile House, DM	1,885	1.1	51.3	36.7
Ashcroft, VL	1,664	1.0	51.5	32.3
Cache Creek, VL	1,037	0.6	10.6	98.1
Clinton, VL	578	0.3	4.4	132.6
Lytton, VL	235	0.1	6.7	35.0
Rest of region	55,780	33.6	112,706.1	0.5
Total Region	166,192	100.0	113,542.9	1.5
Region as % of BC	4.0		12.3	
Youth age 15-29	30,315			
Youth in Region as % of BC	3.9			

Note to Users

All assumptions relating to employment are based on past conditions, modified wherever possible to take into consideration future changes. The resulting employment projections are not necessarily what will be, but rather what could be, given the realization of these conditions. It is certainly possible that unforeseen changes in factors such as economic development, government policy, or land use and zoning will affect future employment. Consequently, the projections should only be regarded as one possible scenario on the future size and distribution of the workforce.

It is important for users to understand that the same set of industries and occupations are reported for each of the 12 College Regions, regardless of the importance of these industries to any particular regional economy. Some of these industries, while significant to the province overall, may have a very small presence in a particular region. For example, the Beverage Manufacturing industry could show up as the highest growth rate for each region of the province because the wine industry is expected to grow, but this would mean the Okanagan College Region would gain hundreds of jobs while the Northwest would gain 5 to 10 jobs at the most. For this reason, growth rates should be viewed in the context of the size of the occupational or industry grouping to clarify the number of jobs being created or lost and the potential impact the change would have on the local economy.

For information on the Regional Districts contained in the College Regions, see [Appendix 3: REGIONAL DISTRICT TO COLLEGE REGION CONVERSION FOR REPM](#).

The December 2008 version of the Major Projects Inventory was used in the development of the employment projections for the 2008-2013 version of the REPM. A full listing of all the Major Projects under construction or at the proposal stage can be found at http://www.bcstats.gov.bc.ca/pubs/pr_mproj.asp

Regional Employment Projection Model (REPM)

Contents

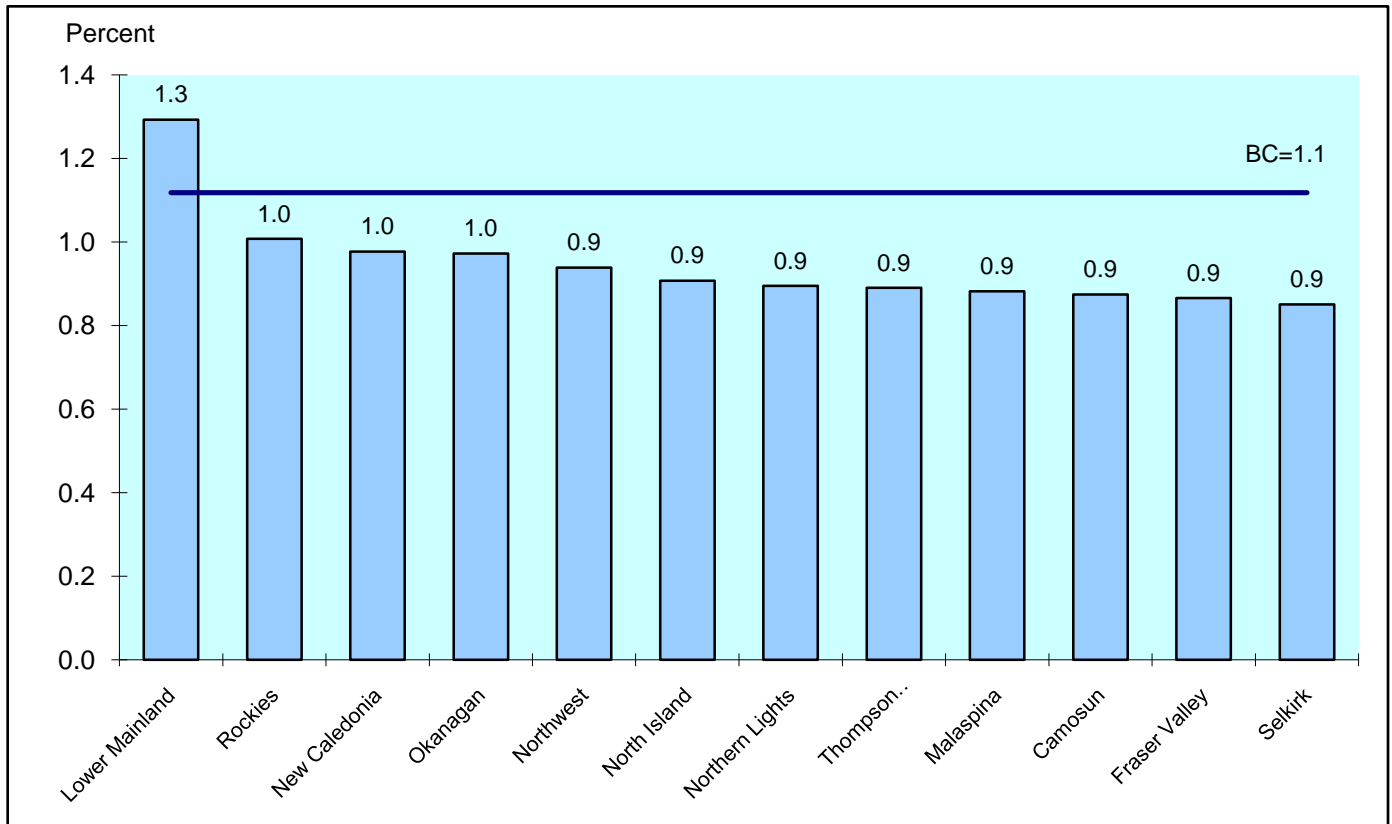
1. Projected Annual Growth in Employment Demand by College Region
2. Projected Annual Growth in Employment Demand. Comparison between Industries
3. Industrial Structure Compared with BC. Percent Share of Employment by Industry
4. Projected Annual Growth in Employment Demand. Comparison between Occupations
5. Occupational Structure Compared with BC. Percent Share of Employment by Occupation
6. Projected Annual Growth Rates in Occupational Demand, 2-digit occupation

Appendices

1. Summary of the Methodology for the BC REPM
2. COPS Industry Conversion for REPM
3. Regional District to College Region Conversion for REPM
4. Projected Annual Growth Rates in Occupational Demand (3-digit)
5. Projected Annual Growth Rates in Occupational Demand (4-digit)

Funding for this project was made possible through the Labour Market Information initiative under the Canada-British Columbia Labour Market Agreement (LMA), which is administered for B.C. by the Ministry of Advanced Education and Labour Market Development.

Projected Annual Growth in Employment Demand by College Region*



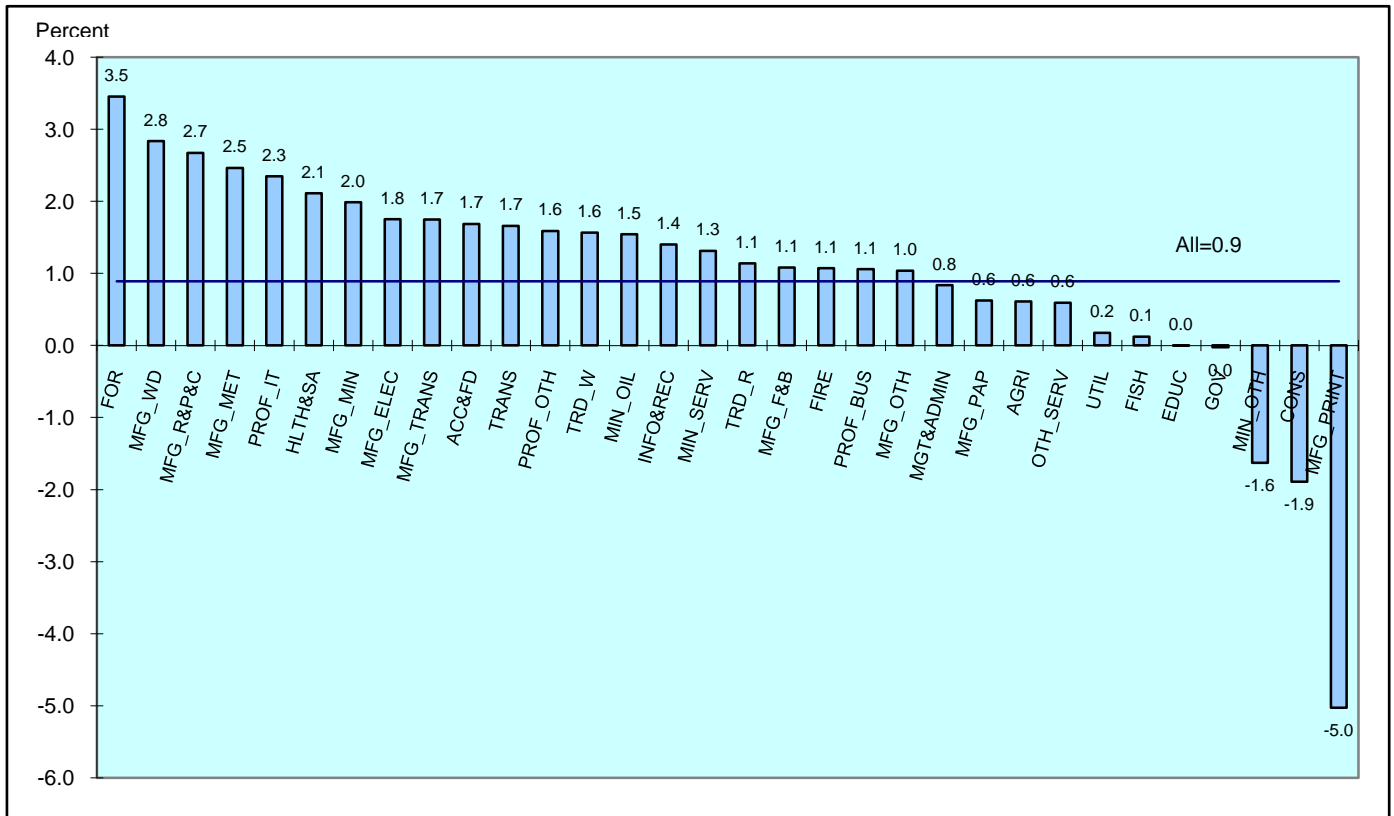
<u>College Region*</u>	<u>Estimated Employment</u>		<u>Avg Annual %</u>
	<u>2008</u>	<u>2013</u>	<u>Chng Over 5</u>
			<u>Years</u>
			<u>2008 to 2013</u>
Camosun	198,090	206,750	0.9
Fraser Valley	135,090	140,940	0.9
Lower Mainland	1,249,300	1,330,070	1.3
Malaspina	111,810	116,750	0.9
New Caledonia	76,330	80,060	1.0
North Island	76,880	80,370	0.9
Northern Lights	44,800	46,810	0.9
Northwest	38,710	40,530	0.9
Okanagan	202,660	212,520	1.0
Rockies	45,290	47,570	1.0
Selkirk	41,410	43,170	0.9
Thompson Rivers	93,310	97,470	0.9
Total	2,313,700	2,443,000	1.1

* See Appendix 3 for details on the Regional Districts included in the College Regions.

Thompson Rivers College Region

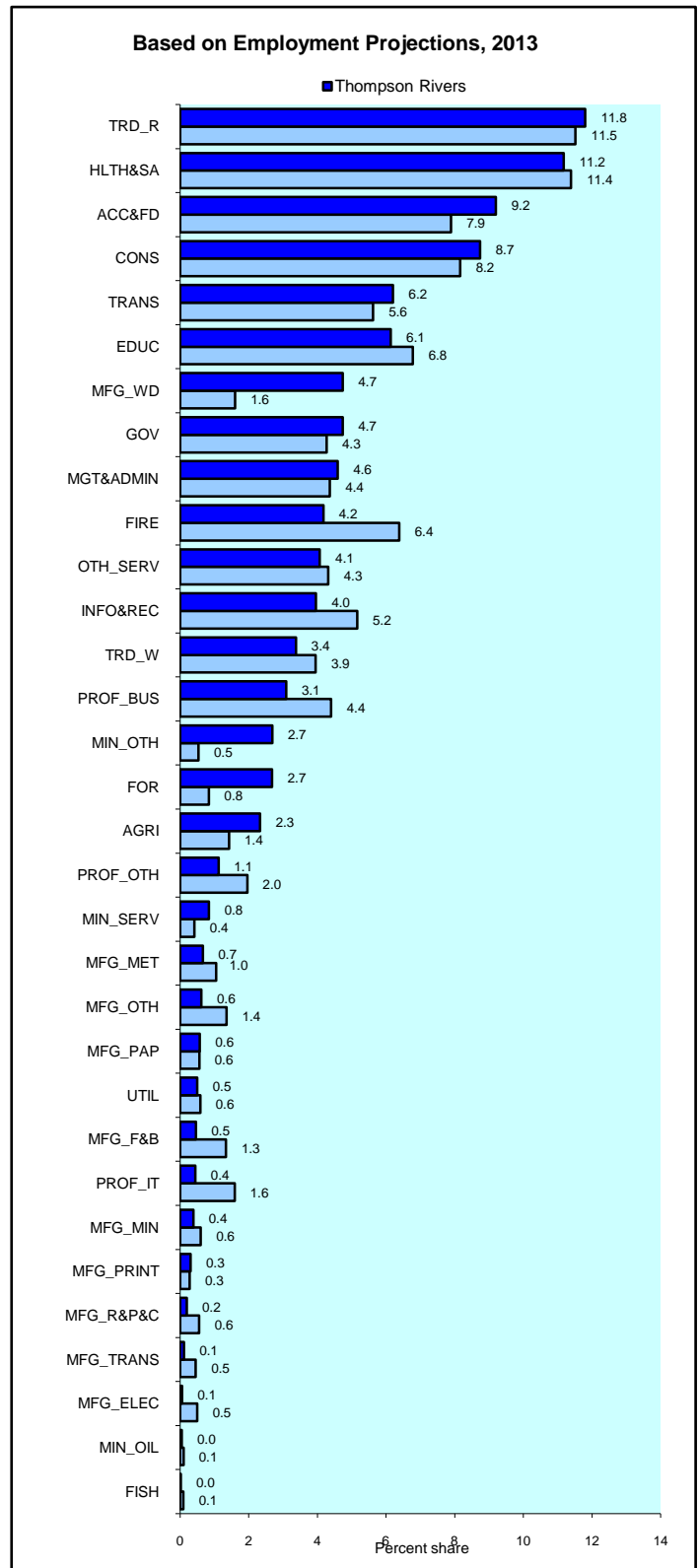
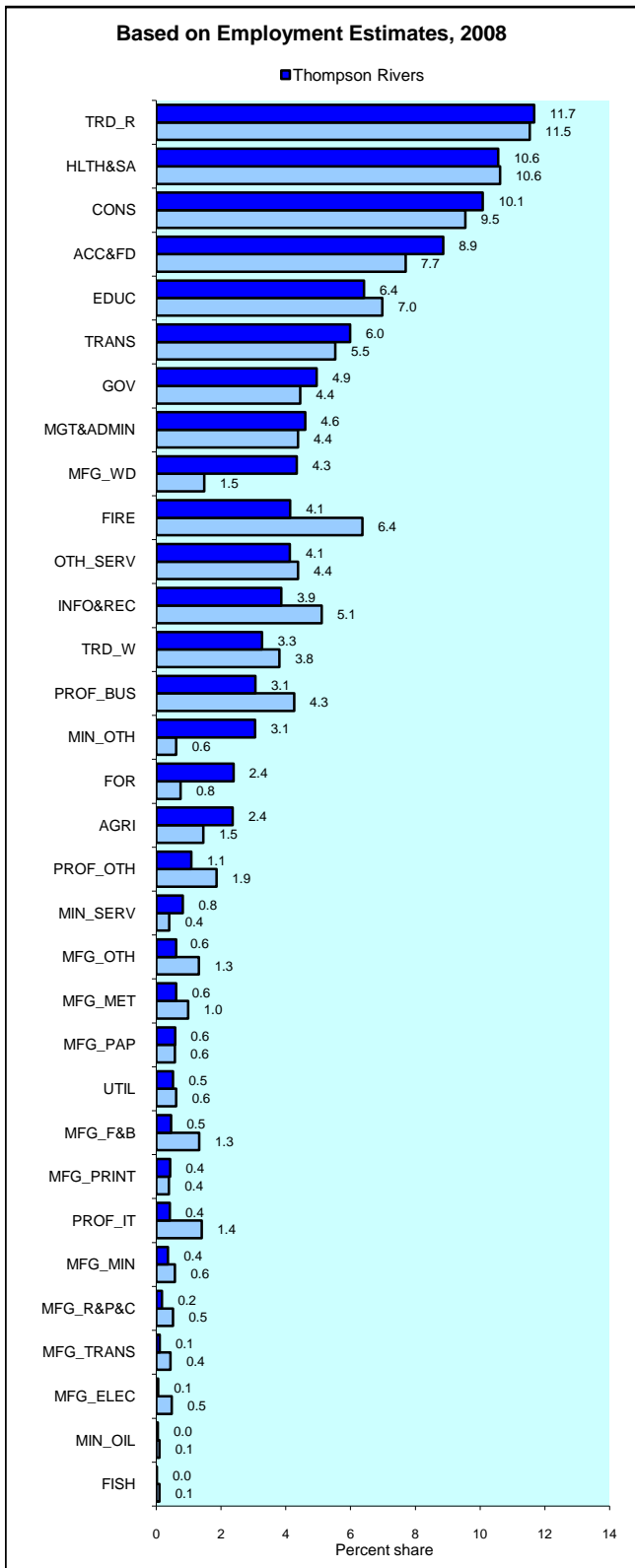
Projected Annual Growth in Employment Demand

Comparison Between Industries



	Avg Annual % Chng Over 5 Years				Avg Annual % Chng Over 5 Years		
	Estimated Employment 2008	Estimated Employment 2013	2008 to 2013		Estimated Employment 2008	Estimated Employment 2013	2008 to 2013
Goods Producing Ind				Service Producing Ind.			
Agriculture	2,200	2,270	0.6	Trade--Wholesale	3,050	3,290	1.6
Forestry	2,230	2,610	3.5	Trade--Retail	10,890	11,500	1.1
Fishing, Hunting, & Trapping	20	20	0.1	Transportation	5,580	6,050	1.7
Oil & Gas	40	50	1.5	Finance, Insurance, R.E.	3,860	4,070	1.1
Mining (non Oil & Gas)	2,850	2,620	-1.6	Prof--Bus Services	2,860	3,010	1.1
Services to Mining	770	820	1.3	Prof--Computer Systems	390	430	2.3
Utilities	480	480	0.2	Prof--Other Services	1,010	1,090	1.6
Construction	9,410	8,520	-1.9	Management/Admin/Other Supp	4,290	4,470	0.8
Mfg--Food & Beverages	430	450	1.1	Education	5,980	5,980	0.0
Mfg--Wood Products	4,050	4,620	2.8	Health & Social Assist.	9,850	10,890	2.1
Mfg--Paper Products	540	560	0.6	Information, Culture, Rec	3,600	3,860	1.4
Mfg--Printing	400	300	-5.0	Accom & Food Services	8,270	8,960	1.7
Mfg--Rubber, Plas. Chem	170	190	2.7	Services--other	3,850	3,970	0.6
Mfg--Mineral Products	340	370	2.0	Government	4,620	4,610	0.0
Mfg--Metal Fab & Machinery	570	640	2.5				
Mfg--Comp, Electronic, Elect	50	60	1.8	Total Service Producing	68,100	72,190	1.2
Mfg--Transportation Eq.	100	110	1.7				
Mfg--Other	570	600	1.0	Total, all industries	93,310	97,470	0.9
Total Goods Producing	25,210	25,280	0.1				

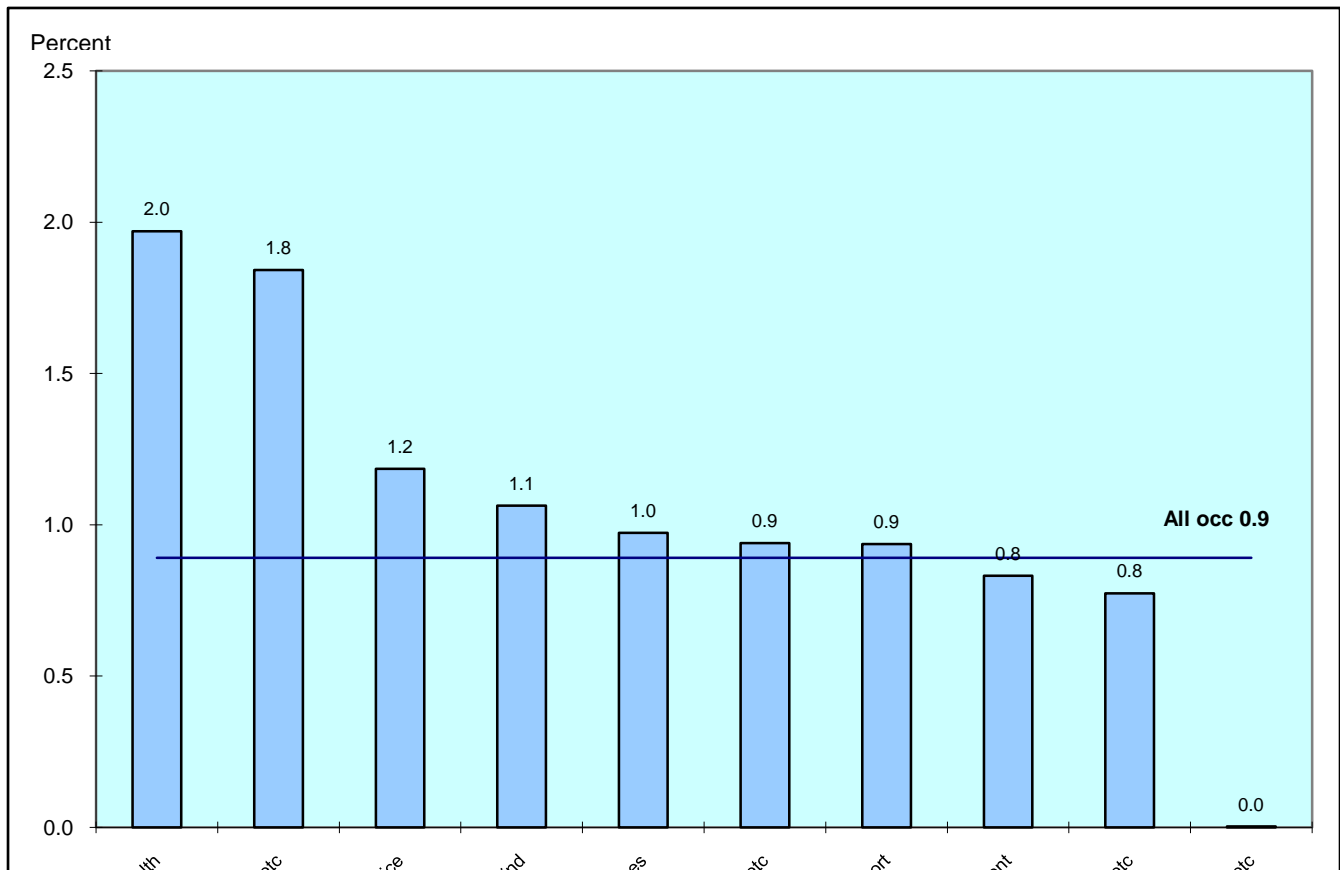
Thompson Rivers College Region Industrial Structure Compared with BC Percent Share of Employment by Industry



Thompson Rivers College Region

Projected Annual Growth in Employment Demand

Comparison Between Occupations

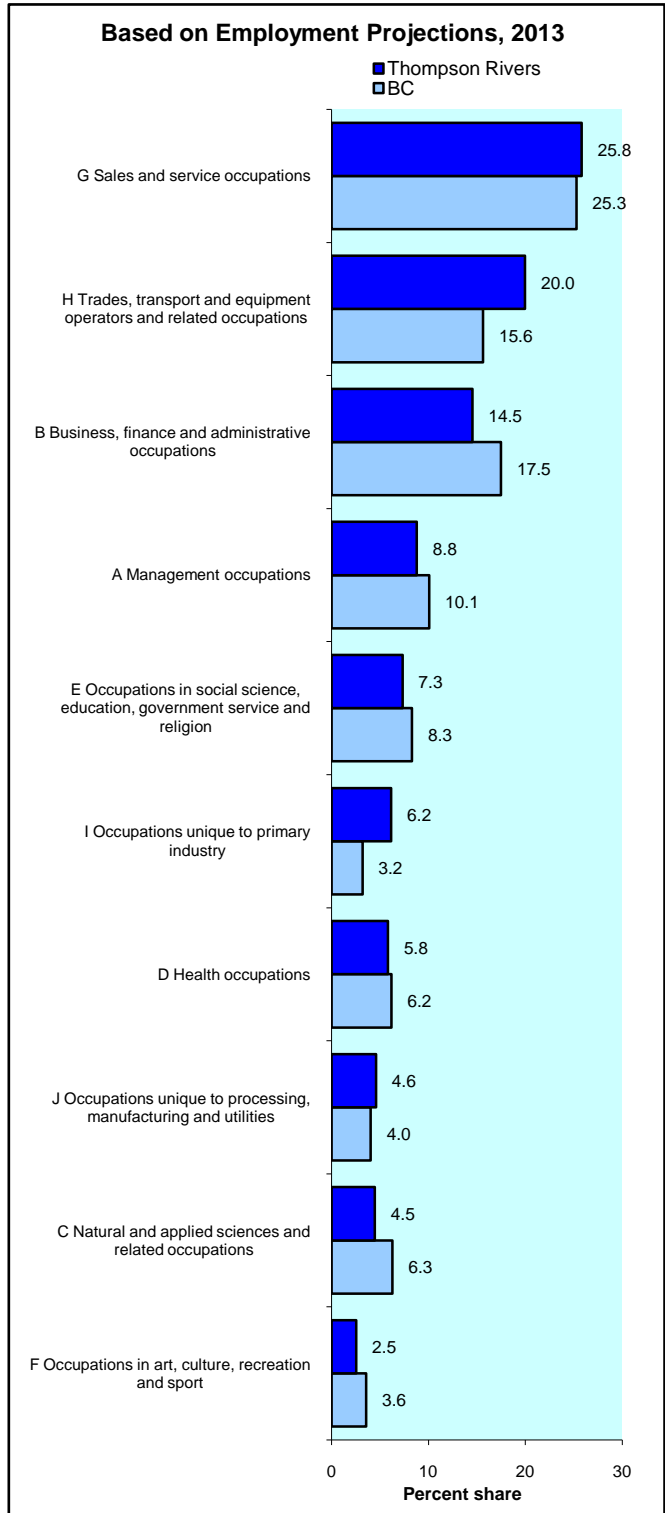
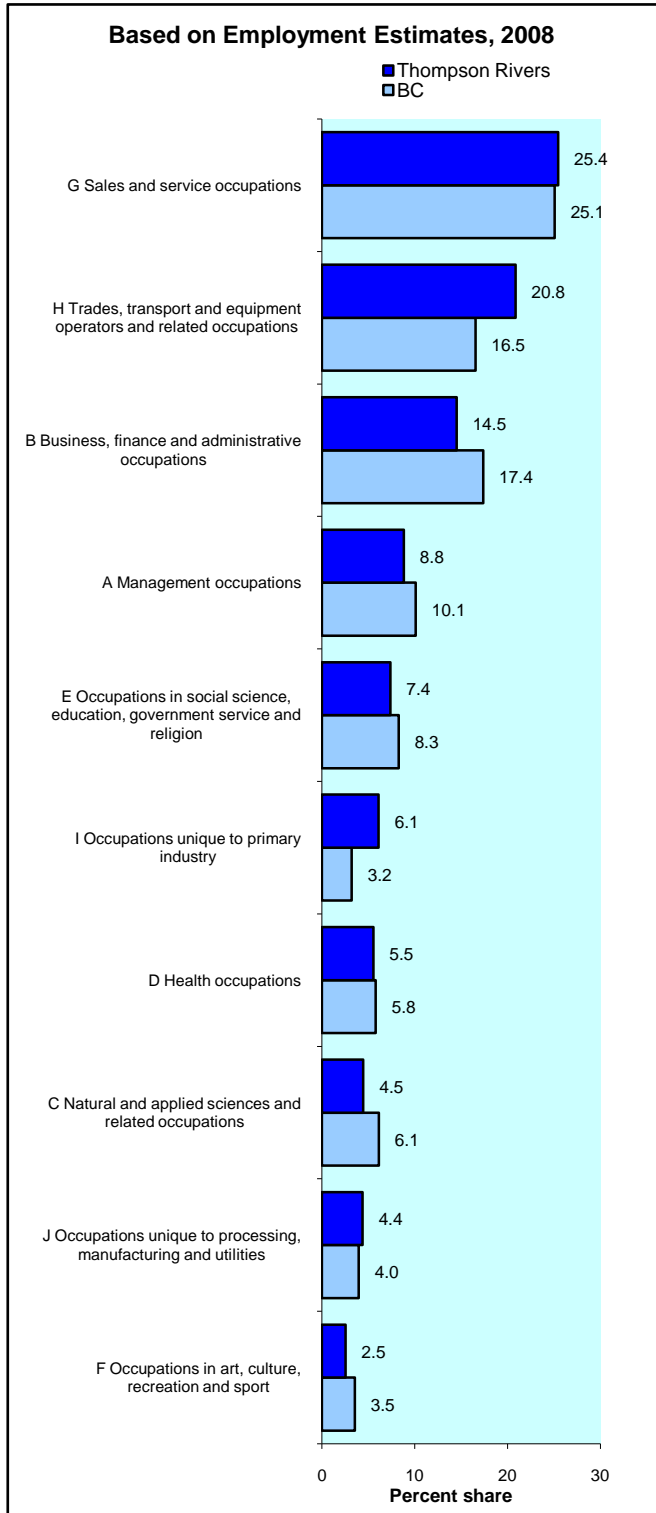


	Estimated Employment		Avg Annual % Chng Over 5 Years
	2008	2013	2008 to 2013
All occupations	93,310	97,470	0.9
A Management occupations	8,230	8,580	0.8
B Business finance and administrative occupations	13,540	14,170	0.9
C Natural and applied sciences and related occupations	4,160	4,360	1.0
D Health occupations	5,160	5,670	2.0
E Occupations in social science, education, government serv, & religion	6,880	7,140	0.8
F Occupations in art culture recreation and sport	2,370	2,480	0.9
G Sales and service occupations	23,730	25,140	1.2
H Trades transport and equipment operators and related occupations	19,460	19,460	0.0
I Occupations unique to primary industry	5,700	6,000	1.1
J Occupations unique to processing manufacturing and utilities	4,090	4,460	1.8

Thompson Rivers College Region

Occupational Structure Compared with BC

Percent Share of Employment by Occupation



Thompson Rivers College Region

	Estimated Employment		Avg Annual % Chng Over 5 Years
	<u>2008</u>	<u>2013</u>	<u>2008 to 2013</u>
	All occupations	93,310	97,470
A0 Senior management occupations	660	680	0.7
A1 Specialist managers	1,340	1,420	1.1
A2 Managers in retail trade food and accommodation services	3,220	3,420	1.3
A3 Other managers n.e.c.	3,020	3,060	0.3
B0 Professional occupations in business and finance	1,330	1,400	1.0
B1 Finance and insurance administration occupations	1,620	1,690	0.9
B2 Secretaries	1,560	1,610	0.6
B3 Administrative and regulatory occupations	1,680	1,750	0.7
B4 Clerical supervisors	350	370	1.0
B5 Clerical occupations	7,000	7,360	1.0
C0 Professional occupations in natural and applied sciences	1,530	1,610	1.0
C1 Technical occupations related to natural and applied sciences	2,630	2,750	1.0
D0 Professional occupations in health	830	900	1.9
D1 Nurse supervisors and registered nurses	1,520	1,670	2.0
D2 Technical and related occupations in health	1,260	1,380	1.9
D3 Assisting occupations in support of health services	1,570	1,720	2.0
E0 Judges, lawyers, psychologists, social workers, ministers of religion & policy/program officers	1,570	1,650	1.1
E1 Teachers and professors	3,110	3,120	0.1
E2 Paralegals, social services workers & occup. in educ. & religion n.e.c.	2,200	2,370	1.6
F0 Professional occupations in art and culture	830	870	0.9
F1 Technical occupations in art, culture, recreation and sport	1,540	1,610	0.9
G0 Sales and service supervisors	760	810	1.3
G1 Wholesale, technical, insurance, real estate sales specialists & retail, wholesale and grain buyers	1,380	1,460	1.1
G2 Retail salespersons and sales clerks	4,050	4,270	1.1
G3 Cashiers	1,860	1,970	1.2
G4 Chefs and cooks	1,710	1,850	1.7
G5 Occupations in food and beverage service	1,700	1,840	1.7
G6 Occupations in protective services	1,280	1,300	0.3
G7 Occup. in travel & accommodation incl. attendants in recreation & sport	1,010	1,080	1.4
G8 Childcare and home support workers	1,810	1,890	0.9
G9 Sales and service occupations n.e.c.	8,190	8,680	1.2
H0 Contractors and supervisors in trades and transportation	910	880	-0.6
H1 Construction trades	3,940	3,660	-1.4
H2 Stationary engineers, power stn operators & electrical trades & telecom.	1,200	1,180	-0.4
H3 Machinists, metal forming, shaping and erecting occupations	880	900	0.5
H4 Mechanics	2,620	2,710	0.7
H5 Other trades n.e.c.	830	840	0.1
H6 Heavy equipment and crane operators including drillers	1,680	1,610	-0.8
H7 Transport equipment operators & related workers, excl. labourers	4,260	4,530	1.3
H8 Trades helpers, construction and transport labourers & related	3,140	3,150	0.1
I0 Occupations unique to agriculture, excluding labourers	2,040	2,110	0.7

Thompson Rivers College Region

Projected Annual Growth Rates in Occupational Demand

	Estimated Employment		Avg Annual % Chng Over 5 Years
	<u>2008</u>	<u>2013</u>	<u>2008 to 2013</u>
I1 Occup. unique to forestry ops, mining, oil & gas extraction, fishing excl. labourers	1,670	1,790	1.4
I2 Primary production labourers	1,990	2,110	1.1
J0 Supervisors in manufacturing	310	340	2.1
J1 Machine operators in manufacturing	1,880	2,030	1.6
J2 Assemblers in manufacturing	480	530	1.9
J3 Labourers in processing, manufacturing and utilities	1,430	1,570	2.1

Appendix 1

Summary of Methodology for the British Columbia Regional Employment Projection Model (REPM)

Summary of Methodology for the British Columbia Regional Employment Projection Model (REPM)

Overview

The methodology used in the model is based on previous work on community dependencies carried out by BC Stats. The fundamental premise is that the economy of a region can be represented by income flows that can be classified as “basic” (or driver) and “non-basic” (or induced) depending on the source of the income. Basic income is the result of employment income generated from “basic jobs” plus investment income.

Included among basic jobs are those that are financed from resources emanating from outside the region. These jobs are labelled as “direct jobs” and are found in industries that export their product internationally, nationally or to other regions within B.C. Typically, export industries are in the goods producing sector, e.g., the primary and manufacturing industries. However, with globalization, certain industries in the service producing sector are increasingly exporting their products; examples of this would be port facilities (categorized in the Water Transport industry), the Financial and Insurance industries, and High Technology Business Service industries (such as Engineering), etc. As well, the metropolitan regions provide retail and wholesale trade services to the outlying regions of B.C. and many local economies provide tourism services such as accommodation, food, and recreation services to residents from other regions (both inside and outside the province).

Another less obvious component of direct jobs are those in the public sector. Education, health and government jobs are generated through tax revenues from the Federal or Provincial governments so those industries rely on general tax revenues coming from outside the region¹.

The other component of basic jobs is classified as “indirect jobs”. The model calculates indirect employment effects from employment changes in direct jobs. For example, when direct jobs are created in a local sawmill, indirect jobs will be created in the “upstream” industries that supply goods and services that go into the production of lumber such as the logging industry, the equipment manufacturing industry, etc., and in the “downstream” industries that get the lumber to market such as the transportation industry, and the wholesale trade industry, etc. The model calculates these indirect jobs using multipliers based on inter-industry linkages from the British Columbia Input-Output Model. The sum of the direct jobs and the indirect jobs are labelled basic jobs. The wages and salaries earned from these basic jobs are the major component of basic income.

The other component of basic income is principally investment income and transfer payments which are assumed to come from outside the local community. Private pensions comprise a large percent of investment income, while Canada Pension Plan and Old Age Security payments form a large percent of transfer payments. Therefore, the growth in the senior population is used as an indicator of changes in this non-salary/non-wage component of basic income.

¹ For the purpose of the model, tax payments are treated as an income flow-out of the regional economy and are deducted from total income so are not connected with any particular industry.

Up to this point, the model has calculated the number of basic jobs by industry and the total basic income of the local region. The next step is to calculate the number of jobs created as a result of the expenditure of this basic income by the local population on household goods and services such as retail trades, restaurants, transportation, residential construction, etc. These induced jobs are called “non-basic jobs” and are calculated using a multiplier based on an income to non-basic jobs ratio derived from the British Columbia Input-Output Model. The final result is a count of the number of non-basic jobs by industry which is then added to the basic jobs to derive total jobs by industry by region.

The final component of the model is to convert the industry employment levels into occupation employment levels. To this end, fixed occupation-to-industry ratios, based on the 2006 Census of Canada data, are applied. Three different ratio structures are used: one for the Vancouver Census Metropolitan Area, one for the Victoria Census Metropolitan Area, and one for the “Rest of Province”.

Data Sources

The current version of the model is benchmarked to the 2006 Census employment by Regional District (RD), and estimates are projected forward to the most up-to-date annual employment data from the Labour Force Survey (LFS). The growth rates for the direct industries from the LFS at the provincial level are used to project growth down to the RD level and then the sub-provincial growth rates are refined using standard variables that indicate differential growth between the regions. The population estimates and projections produced by BC Stats are an important data source for this purpose. For example, the employment growth in the education sector is largely dictated by the projected K-12 and post-secondary population growth in the relevant age groups. Government Services industry grows in line with the total population growth as does the social assistance industry. Employment in the health sector is primarily governed by the growth in the total population and, in particular, by the growth in the seniors' population. The industries that have components in the tourism sector are differentiated according to the sub-provincial growth rates in tax revenues derived from room rentals. A further important determining factor of sub-region direct employment growth in the private sector is the major projects underway in the timeframe.

The output from the model is benchmarked to the LFS industry employment numbers at the B.C. level, as well as to the LFS regional employment numbers for the Development Regions and the Victoria and Vancouver Census Metropolitan Areas. Once the model is updated to the most current employment levels, then the forecast is produced for five years out. The industrial employment projections from the Canadian Occupational Projection System (COPS) are now used as the source data for the industrial growth, benchmarked to the British Columbia Ministry of Finance's employment growth rate projections for the goods producing sector and the service producing sector. These growth rates are used in determining both the growth rates in the direct employment and as a benchmark to reconcile the industrial employment generated by the model. The allocation of the provincial growth pattern forecast among the regions is done the same way as the estimates. Population forecasts by Regional District and the information on planned capital projects from the BC Major Projects Inventory are used as the drivers. The one exception is there are no forecasts available

for Room Tax Revenue so, for the tourism industries, the new completed major projects in the food and accommodation sector are integrated into the model.

Currently, there is a demand for economic forecasts by occupation at the College Region level. College Regions are aggregations of sub-sets of Regional Districts. Occupational forecasts are produced at the College Region and the provincial level only. The accompanying appendices contain a conversion table which outlines which Regional District belongs to which College Region.

Updating

The intent is to update the Regional Employment Projection Model annually, based on another year of LFS data plus a new COPS forecast. The multiplier coefficients used to calculate indirect employment, non-basic employment, and occupational employment are to be updated every five years when regional updated Census data becomes available. At that time, the Regional District employment data by industry will also be re-benchmarked.

The model is only as good as the input data assumptions. Reliance on good quality data from COPS is very important. Users of the data who perceive any problems with the assumptions in the model or question the quality of any of the data series we are using, should contact Cathy Stock, Director, Labour and Social Statistics, at (250) 953-3703 or Cathy.Stock@gov.bc.ca.

July 2009

Appendix 2

REPM INDUSTRY

COPS INDUSTRY

ACC&FD	31 Accommodation and food services
AGRIC	1 Agriculture
BEVMFG	9 Food and Beverage Products
BUS_HI	25 Computer System Design Services
BUS_HI	24 Professional Business Services
BUS_HI	26 Other Professional Services
BUS_LO	27 Management, Administrative and Other Support
BUS_LO	24 Professional Business Services
BUS_LO	26 Other Professional Services
COMMUNICA	30 Information, culture and recreation
CONSTRUCT	8 Construction
EDUCATION	28 Educational Services
FIRE	23 Finance, Insurance, Real Estate and Leasing
FISHING	3 Fishing, Hunting and Trapping
FISHMFG	9 Food and Beverage Products
FOODMFG	9 Food and Beverage Products
FORESTLOG	2 Forestry and Logging with support activities
GOVT	33 Public administration
HEALTH	29 Health Care and Social Assistance
MINING	5 Mining (except Oil and Gas)
MINING	6 Support Activities for Mining and Oil & Gas Extraction
MINMFG	14 Manufactured Mineral Products
OTHMFG	12 Printing and Related Support Activities
OTHMFG	13 Rubber, Plastics and Chemicals
OTHMFG	14 Manufactured Mineral Products
OTHMFG	15 Metal Fabrication and Machinery (excluding electrical)
OTHMFG	16 Computer, Electronic and Electrical Products
OTHMFG	17 Transportation Equipment Manufacturing
OTHMFG	18 Other Manufacturing
OTHSERV	29 Health Care and Social Assistance
OTHSERV	32 Other services
PAPERPULP	11 Paper Manufacturing
PETROL	4 Oil and Gas Extraction
PETROL	6 Support Activities for Mining and Oil and Gas Extraction
PETROLMFG	19 Other Manufacturing
RETAIL	21 Retail Trade
TRANOTHER	22 Transportation and Warehousing
TRANRAIL	22 Transportation and Warehousing
TRANTRUCK	22 Transportation and Warehousing
TRANWATER	22 Transportation and Warehousing
UTILITIES	7 Utilities
WDOTHER	10 Wood Product Manufacturing
WDSAWMILLS	10 Wood Product Manufacturing
WHOLESALE	20 Wholesale Trade

Appendix 3

REGIONAL DISTRICT TO COLLEGE REGION CONVERSION FOR REPM

COLLEGE REGION REGIONAL	REGIONAL DISTRICT #	REGIONAL DISTRICT NAME	% of REGIONAL DISTRICT
CAMOSUN	17	Capital	100
FRASER VALLEY	9	Fraser Valley	100
LOWER MAINLAND	15	Greater Vancouver	100
LOWER MAINLAND	29	Sunshine Coast	100
LOWER MAINLAND	31	Squamish Lillooet	87
MALASPINA	19	Cowichan Valley	100
MALASPINA	21	Nanaimo	100
MALASPINA	27	Powell River	100
NEW CALEDONIA	41	Cariboo	37
NEW CALEDONIA	51	Bulkley Nechako	61
NEW CALEDONIA	53	Fraser-Fort George	100
NORTH ISLAND	23	Alberni-Clayoquot	100
NORTH ISLAND	25	Comox Strathcona	100
NORTH ISLAND	43	Mount Waddington	100
NORTH ISLAND	45	Central Coast	100
NORTHERN LIGHTS	49	Kitimat Stikine	2
NORTHERN LIGHTS	55	Peace River	100
NORTHERN LIGHTS	57	Stikine	100
NORTHERN LIGHTS	59	Northern Rockies	100
NORTHWEST	47	Skeena-Queen Charlotte	100
NORTHWEST	49	Kitimat Stikine	98
NORTHWEST	51	Bulkley Nechako	39
OKANAGAN	7	Okanagan- Similkameen	100
OKANAGAN	35	Central Okanagan	100
OKANAGAN	37	North Okanagan	100
OKANAGAN	39	Columbia Shushwap	85
ROCKIES	1	East Kootenay	100
ROCKIES	3	Central Kootenays	20
ROCKIES	39	Columbia Shushwap	15
SELKIRK	3	Central Kootenay	80
SELKIRK	5	Kootenay Boundary	100
THOMPSON RIVERS	31	Squamish Lillooet	13
THOMPSON RIVERS	33	Thompson Nicola	100
THOMPSON RIVERS	41	Cariboo	63

Prepared by: BC Stats

Appendix 4

Projected Annual Growth Rates in Occupational Demand (3-digit)

Thompson Rivers College Region

Projected Annual Growth Rates in Occupational Demand

	Estimated Employment		Avg Annual % Chng Over 5 Years
	<u>2008</u>	<u>2013</u>	<u>2008 to 2013</u>
All occupations	93,310	97,470	0.9
A01 Legislators and senior management	660	680	0.7
A11 Administrative services managers	510	530	0.9
A12 Managers in engineering, architecture, science and information systems	120	130	1.1
A13 Sales, marketing and advertising managers	500	530	1.4
A14 Facility operation and maintenance managers	220	230	1.0
A21 Managers in retail trade	2,130	2,240	1.1
A22 Managers in food service and accommodation	1,090	1,180	1.6
A30 Managers in financial and business services	600	630	1.0
A31 Managers in communication (except broadcasting)	40	40	1.5
A32 Managers in health, education, social and community services	460	480	0.7
A33 Managers in public administration	50	50	0.4
A34 Managers in art, culture, recreation and sport	130	140	1.2
A35 Managers in protective service	100	100	0.0
A36 Managers in other services	190	200	0.8
A37 Managers in construction and transportation	890	840	-1.1
A38 Managers in primary production (except agriculture)	240	240	0.6
A39 Managers in manufacturing and utilities	310	320	1.0
B01 Auditors, accountants and investment professionals	1,040	1,090	1.0
B02 Human resources and business service professionals	290	310	1.1
B11 Finance and insurance administrative occupations	1,620	1,690	0.9
B21 Secretaries, recorders and transcriptionists	1,560	1,610	0.7
B31 Administrative and regulatory occupations	1,690	1,750	0.7
B41 Clerical supervisors	350	370	1.0
B51 Clerical occupations, general office skills	2,420	2,550	1.1
B52 Office equipment operators	210	220	0.7
B53 Finance and insurance clerks	1,290	1,360	1.0
B54 Administrative support clerks	480	500	0.9
B55 Library, correspondence and related information clerks	1,030	1,070	0.8
B56 Mail and message distribution occupations	570	610	1.4
B57 Recording, scheduling and distributing occupations	990	1,050	1.2
C01 Physical science professionals	100	100	0.3
C02 Life science professionals	370	400	1.5
C03 Civil, mechanical, electrical and chemical engineers	330	340	0.6
C04 Other engineers	170	170	0.3
C05 Architects, urban planners and land surveyors	180	180	0.5
C06 Mathematicians, statisticians and actuaries	0	0	1.6
C07 Computer and information systems professionals	380	410	1.5
C11 Technical occupations in physical sciences	210	210	0.0
C12 Technical occupations in life sciences	570	610	1.4
C13 Technical occupations in civil, mechanical and industrial engineering	180	180	0.1
C14 Technical occupations in electronics and electrical engineering	440	450	0.8
C15 Technical occupations in architecture, drafting, surveying and mapping	280	290	1.0
C16 Other technical inspectors and regulatory officers	250	260	0.4
C17 Transportation officers and controllers	370	400	1.5
C18 Technical occupations in computer and information systems	330	350	1.2
D01 Physicians, dentists and veterinarians	440	480	2.0

Thompson Rivers College Region

Projected Annual Growth Rates in Occupational Demand

	Estimated Employment		Avg Annual % Chng Over 5 Years
	<u>2008</u>	<u>2013</u>	<u>2008 to 2013</u>
D02 Optometrists, chiropractors and other health diagnosing and treating professionals	60	60	2.1
D03 Pharmacists, dietitians and nutritionists	140	150	1.5
D04 Therapy and assessment professionals	190	210	1.9
D11 Nurse supervisors and registered nurses	1,520	1,670	2.0
D21 Medical technologists and technicians (except dental health)	410	450	2.0
D22 Technical occupations in dental health care	120	130	2.0
D23 Other technical occupations in health care (except dental)	730	790	1.8
D31 Assisting occupations in support of health services	1,570	1,720	2.0
E01 Judges, lawyers and Quebec notaries	220	230	1.0
E02 Psychologists, social workers, counsellors, clergy and probation officers	770	820	1.2
E03 Policy and program officers, researchers and consultants	580	600	0.8
E11 University professors and assistants	280	280	0.0
E12 College and other vocational instructors	470	480	0.3
E13 Secondary and elementary school teachers and educational counsellors	2,370	2,370	0.0
E21 Paralegals, social services workers and occupations in education and religion, n.e.c.	2,200	2,370	1.6
F01 Librarians, archivists, conservators and curators	70	80	1.3
F02 Writing, translating and public relations professionals	320	340	1.0
F03 Creative and performing artists	440	460	0.8
F11 Technical occupations in libraries, archives, museums and art galleries	110	110	1.0
F12 Photographers, graphic arts technicians and technical and co-ordinating occupations in motion pictures, broadcasting and the performing arts	190	200	1.2
F13 Announcers and other performers	60	60	1.4
F14 Creative designers and craftspersons	520	530	0.6
F15 Athletes, coaches, referees and related occupations	670	700	1.1
G01 Sales and service supervisors	760	810	1.3
G11 Sales representatives, wholesale trade	620	660	1.1
G12 Technical sales specialists, wholesale trade	180	190	1.4
G13 Insurance and real estate sales occupations and buyers	580	610	1.0
G21 Retail salespersons and sales clerks	4,050	4,270	1.1
G31 Cashiers	1,860	1,970	1.2
G41 Chefs and cooks	1,710	1,850	1.7
G51 Occupations in food and beverage service	1,700	1,840	1.7
G61 Police officers and firefighters	460	460	0.0
G62 Other occupations in protective service	430	440	0.1
G63 Security guards and related occupations	380	400	1.0
G71 Occupations in travel and accommodation	500	540	1.4
G72 Tour and recreational guides and casino occupations	250	260	1.3
G73 Other occupations in travel, accommodation, amusement and recreation	260	280	1.3
G81 Child care and home support workers	1,810	1,890	0.9
G91 Technical occupations in personal service	420	430	0.6
G92 Other occupations in personal service	290	310	0.8
G93 Cleaners	3,400	3,580	1.0
G94 Butchers and bakers, retail and wholesale	350	380	1.3
G96 Food counter attendants, kitchen helpers and related occupations	2,170	2,350	1.6
G97 Other sales and related occupations	1,330	1,400	1.1
G98 Other elemental service occupations	220	230	1.1

Thompson Rivers College Region

Projected Annual Growth Rates in Occupational Demand

	Estimated Employment		Avg Annual % Chng Over 5 Years
	<u>2008</u>	<u>2013</u>	<u>2008 to 2013</u>
H01 Contractors and supervisors, trades and related workers	850	810	-0.8
H02 Supervisors, railway and motor transportation occupations	60	70	1.2
H11 Plumbers, pipefitters and gas fitters	530	500	-1.2
H12 Carpenters and cabinetmakers	1,870	1,750	-1.4
H13 Masonry and plastering trades	600	550	-1.7
H14 Other construction trades	940	870	-1.5
H21 Electrical trades and telecommunications occupations	1,100	1,070	-0.5
H22 Stationary engineers and power station and system operators	110	110	1.0
H31 Machinists and related occupations	120	130	1.7
H32 Metal forming, shaping and erecting trades	760	780	0.3
H41 Machinery and transportation equipment mechanics (except motor vehicle)	1,550	1,590	0.6
H42 Automotive service technicians	910	950	0.8
H43 Other mechanics	160	160	0.8
H51 Upholsterers, tailors, shoe repairers, jewellers and related occupations	110	110	0.7
H52 Printing press operators, commercial divers and other trades and related occupations, n.e.c.	230	240	0.4
H53 Other installers, repairers and servicers	490	490	-0.1
H61 Heavy equipment operators	1,520	1,460	-0.8
H62 Crane operators, drillers and blasters	150	150	-0.4
H71 Motor vehicle and transit drivers	3,830	4,070	1.2
H72 Train crew operating occupations	160	170	1.6
H73 Other transport equipment operators and related workers	270	290	1.5
H81 Longshore workers and material handlers	1,250	1,350	1.6
H82 Trades helpers and labourers	1,670	1,570	-1.2
H83 Public works and other labourers, n.e.c.	220	230	0.7
I01 Contractors, operators and supervisors in agriculture, horticulture and aquaculture	1,130	1,170	0.7
I02 Agriculture and horticulture workers	900	940	0.7
I11 Supervisors, logging and forestry	120	140	3.1
I12 Supervisors, mining, oil and gas	250	240	-1.1
I13 Underground miners, oil and gas drillers and related workers	310	300	-0.7
I14 Mine service workers and operators in oil and gas drilling	140	150	0.2
I15 Logging machinery operators	420	490	3.3
I16 Logging and forestry workers	390	440	2.7
I17 Fishing vessel masters and skippers and fishermen/women	20	20	0.3
I18 Other fishing and trapping occupations	10	10	1.0
I21 Primary production labourers	1,990	2,110	1.1
J01 Supervisors, processing occupations	270	300	2.2
J02 Supervisors, assembly and fabrication	40	40	2.0
J11 Central control and process operators in manufacturing and processing	150	150	0.4
J12 Machine operators and related workers in metal and mineral products processing	120	120	0.3
J13 Machine operators and related workers in chemical, plastic and rubber processing	90	90	0.9
J14 Machine operators and related workers in pulp and paper production and wood processing	940	1,070	2.6
J15 Machine operators and related workers in textile processing	20	20	0.6

Thompson Rivers College Region

Projected Annual Growth Rates in Occupational Demand

	Estimated Employment		Avg Annual % Chng Over 5 Years
	<u>2008</u>	<u>2013</u>	<u>2008 to 2013</u>
J16 Machine operators and related workers in fabric, fur and leather products manufacturing	50	60	1.0
J17 Machine operators and related workers in food, beverage and tobacco processing	160	160	1.1
J18 Printing machine operators and related occupations	150	140	-1.7
J19 Machining, metalworking, woodworking and related machine operators	200	220	2.0
J21 Mechanical, electrical and electronics assemblers	70	70	1.6
J22 Other assembly and related occupations	420	460	2.0
J31 Labourers in processing, manufacturing and utilities	1,430	1,570	2.1

Appendix 5

Projected Annual Growth Rates in Occupational Demand (4-digit)

Thompson Rivers College Region

Projected Annual Growth Rates in Occupational Demand

	Estimated Employment		Avg Annual % Chng Over 5 Years
	2008	2013	2008 to 2013
All occupations	93,310	97,470	0.9
A Management occupations	8,230	8,580	0.8
A0 Senior management occupations	660	680	0.7
A01 Legislators and senior management	660	680	0.7
A011 Legislators	70	70	0.0
A012 Senior government managers and officials	80	80	0.1
A013 Senior managers - Financial, communications and other business services	120	120	1.3
A014 Senior managers - Health, education, social and community services and membership organizations	80	90	1.1
A015 Senior managers - Trade, broadcasting and other services, n.e.c.	120	120	1.3
A016 Senior managers - Goods production, utilities, transportation and construction	190	190	0.5
A1 Specialist managers	1,340	1,420	1.1
A11 Administrative services managers	510	530	0.9
A111 Financial managers	200	210	0.9
A112 Human resources managers	100	110	1.0
A113 Purchasing managers	30	30	0.8
A114 Other administrative services managers	170	180	0.9
A12 Managers in engineering, architecture, science and information systems	120	130	1.1
A121 Engineering managers	40	40	0.6
A122 Computer and information systems managers	70	70	1.3
A123 Architecture and science managers	20	20	1.1
A13 Sales, marketing and advertising managers	500	530	1.4
A131 Sales, marketing and advertising managers	500	530	1.4
A14 Facility operation and maintenance managers	220	230	1.0
A141 Facility operation and maintenance managers	220	230	1.0
A2 Managers in retail trade, food and accommodation services	3,220	3,420	1.3
A21 Managers in retail trade	2,130	2,240	1.1
A211 Retail trade managers	2,130	2,240	1.1
A22 Managers in food service and accommodation	1,090	1,180	1.6
A221 Restaurant and food service managers	650	700	1.7
A222 Accommodation service managers	430	470	1.6
A3 Other managers, n.e.c.	3,020	3,060	0.3
A30 Managers in financial and business services	600	630	1.0
A301 Insurance, real estate and financial brokerage managers	340	360	1.0
A302 Banking, credit and other investment managers	230	250	1.1
A303 Other business services managers	30	30	1.0
A31 Managers in communication (except broadcasting)	40	40	1.5
A311 Telecommunication carriers managers	20	20	1.4
A312 Postal and courier services managers	30	30	1.6
A32 Managers in health, education, social and community services	460	480	0.7
A321 Managers in health care	90	100	2.0
A322 Administrators - Post-secondary education and vocational training	50	50	0.0
A323 School principals and administrators of elementary and secondary education	220	220	0.0
A324 Managers in social, community and correctional services	100	100	1.4
A33 Managers in public administration	50	50	0.4

Thompson Rivers College Region

Projected Annual Growth Rates in Occupational Demand

	Estimated Employment		Avg Annual % Chng Over 5 Years
	2008	2013	2008 to 2013
A331 Government managers - Health and social policy development and program administration	10	10	0.9
A332 Government managers - Economic analysis, policy development and program administration	20	20	0.2
A333 Government managers - Education policy development and program administration	-	-	-
A334 Other managers in public administration	20	20	0.2
A34 Managers in art, culture, recreation and sport	130	140	1.2
A341 Library, archive, museum and art gallery managers	30	30	1.2
A342 Managers - Publishing, motion pictures, broadcasting and performing arts	30	40	1.4
A343 Recreation, sports and fitness program and service directors	70	80	1.1
A35 Managers in protective service	100	100	0.0
A351 Commissioned police officers	10	10	0.0
A352 Fire chiefs and senior firefighting officers	20	20	0.2
A353 Commissioned officers, armed forces	70	70	0.0
A36 Managers in other services	190	200	0.8
A361 Other services managers	190	200	0.8
A37 Managers in construction and transportation	890	840	-1.1
A371 Construction managers	500	460	-1.5
A372 Residential home builders and renovators	270	250	-1.6
A373 Transportation managers	120	130	1.5
A38 Managers in primary production (except agriculture)	240	240	0.6
A381 Primary production managers (except agriculture)	240	240	0.5
A39 Managers in manufacturing and utilities	310	320	1.0
A391 Manufacturing managers	250	260	1.1
A392 Utilities managers	60	60	0.4
B Business, finance and administrative occupations	13,540	14,170	0.9
B0 Professional occupations in business and finance	1,330	1,400	1.0
B01 Auditors, accountants and investment professionals	1,040	1,090	1.0
B011 Financial auditors and accountants	660	700	1.0
B012 Financial and investment analysts	60	60	1.0
B013 Securities agents, investment dealers and brokers	70	70	0.9
B014 Other financial officers	250	260	1.0
B02 Human resources and business service professionals	290	310	1.1
B021 Specialists in human resources	130	130	0.7
B022 Professional occupations in business services to management	160	170	1.4
B1 Finance and insurance administration occupations	1,620	1690	0.9
B11 Finance and insurance administrative occupations	1,620	1690	0.9
B111 Bookkeepers	1,280	1330	0.8
B112 Loan officers	150	150	1.1
B113 Insurance adjusters and claims examiners	90	100	1.0
B114 Insurance underwriters	20	20	1.0
B115 Assessors, valuers and appraisers	70	80	0.7
B116 Customs, ship and other brokers	10	10	1.5
B2 Secretaries	1,560	1610	0.6
B21 Secretaries, recorders and transcriptionists	1,560	1610	0.7
B211 Secretaries (except legal and medical)	1,290	1320	0.5

Thompson Rivers College Region

Projected Annual Growth Rates in Occupational Demand

	Estimated Employment		Avg Annual % Chng Over 5 Years
	2008	2013	2008 to 2013
B212 Legal secretaries	160	170	1.0
B213 Medical secretaries	40	40	1.9
B214 Court recorders and medical transcriptionists	70	70	1.4
B3 Administrative and regulatory occupations	1,680	1750	0.7
B31 Administrative and regulatory occupations	1,690	1750	0.7
B311 Administrative officers	1,000	1050	0.8
B312 Executive assistants	90	90	0.6
B313 Personnel and recruitment officers	50	50	0.5
B314 Property administrators	270	280	0.9
B315 Purchasing agents and officers	120	120	0.5
B316 Conference and event planners	50	50	1.1
B317 Court officers and justices of the peace	10	10	0.0
B318 Immigration, employment insurance and revenue officers	100	100	0.0
B4 Clerical supervisors	350	370	1.0
B41 Clerical supervisors	350	370	1.0
B411 Supervisors, general office and administrative support clerks	50	60	0.9
B412 Supervisors, finance and insurance clerks	70	80	0.8
B413 Supervisors, library, correspondence and related information clerks	90	90	0.9
B414 Supervisors, mail and message distribution occupations	60	60	1.6
B415 Supervisors, recording, distributing and scheduling occupations	80	80	1.1
B5 Clerical occupations	7,000	7360	1.0
B51 Clerical occupations, general office skills	2,420	2550	1.1
B511 General office clerks	1,290	1340	0.8
B513 Records management and filing clerks	110	120	1.2
B514 Receptionists and switchboard operators	1,020	1100	1.5
B52 Office equipment operators	210	220	0.7
B522 Data entry clerks	140	150	0.8
B523 Desktop publishing operators and related occupations	20	20	-0.9
B524 Telephone operators	50	50	1.1
B53 Finance and insurance clerks	1,290	1360	1.0
B531 Accounting and related clerks	560	580	0.9
B532 Payroll clerks	140	140	1.1
B533 Customer service representatives - Financial services	480	510	1.1
B534 Banking, insurance and other financial clerks	110	110	1.1
B535 Collectors	20	20	0.8
B54 Administrative support clerks	480	500	0.9
B541 Administrative clerks	420	440	1.0
B542 Personnel clerks	40	40	0.9
B543 Court clerks	20	20	0.0
B55 Library, correspondence and related information clerks	1,030	1070	0.8
B551 Library clerks	70	70	1.2
B552 Correspondence, publication and related clerks	20	20	1.1
B553 Customer service, information and related clerks	750	780	0.9
B554 Survey interviewers and statistical clerks	190	200	0.3
B56 Mail and message distribution occupations	570	610	1.4
B561 Mail, postal and related clerks	160	170	1.6
B562 Letter carriers	170	180	1.7

Thompson Rivers College Region

Projected Annual Growth Rates in Occupational Demand

	Estimated Employment		Avg Annual % Chng Over 5 Years
	2008	2013	2008 to 2013
B563 Couriers, messengers and door-to-door distributors	240	250	1.2
B57 Recording, scheduling and distributing occupations	990	1050	1.2
B571 Shippers and receivers	360	380	1.5
B572 Storekeepers and parts clerks	220	230	1.1
B573 Production clerks	50	50	1.0
B574 Purchasing and inventory clerks	180	190	1.1
B575 Dispatchers and radio operators	170	180	1.0
B576 Transportation route and crew schedulers	10	10	1.4
C Natural and applied sciences and related occupations	4,160	4360	1.0
C0 Professional occupations in natural and applied sciences	1,530	1610	1.0
C01 Physical science professionals	100	100	0.3
C011 Physicists and astronomers	-	-	-
C012 Chemists	10	10	1.3
C013 Geologists, geochemists and geophysicists	60	60	0.3
C014 Meteorologists	10	10	0.7
C015 Other professional occupations in physical sciences	20	20	-0.5
C02 Life science professionals	370	400	1.5
C021 Biologists and related scientists	120	120	0.6
C022 Forestry professionals	230	250	2.1
C023 Agricultural representatives, consultants and specialists	20	20	0.6
C03 Civil, mechanical, electrical and chemical engineers	330	340	0.6
C031 Civil engineers	190	190	0.5
C032 Mechanical engineers	70	80	1.1
C033 Electrical and electronics engineers	40	40	0.7
C034 Chemical engineers	20	20	0.4
C04 Other engineers	170	170	0.3
C041 Industrial and manufacturing engineers	30	30	0.6
C042 Metallurgical and materials engineers	-	-	-
C043 Mining engineers	50	50	-1.1
C044 Geological engineers	20	30	0.9
C045 Petroleum engineers	20	20	1.0
C046 Aerospace engineers	-	-	-
C047 Computer engineers (except software engineers)	30	30	1.1
C048 Other professional engineers, n.e.c.	10	10	0.9
C05 Architects, urban planners and land surveyors	180	180	0.5
C051 Architects	40	40	0.5
C052 Landscape architects	10	10	0.9
C053 Urban and land use planners	50	50	0.3
C054 Land surveyors	90	90	0.5
C06 Mathematicians, statisticians and actuaries	-	-	-
C061 Mathematicians, statisticians and actuaries	-	-	-
C07 Computer and information systems professionals	380	410	1.5
C071 Information systems analysts and consultants	150	160	1.3
C072 Database analysts and data administrators	20	20	1.4
C073 Software engineers and designers	20	30	1.7
C074 Computer programmers and interactive media developers	120	130	1.4
C075 Web designers and developers	70	80	1.8

Thompson Rivers College Region

Projected Annual Growth Rates in Occupational Demand

	Estimated Employment		Avg Annual % Chng Over 5 Years
	2008	2013	2008 to 2013
C1 Technical occupations related to natural and applied sciences	2,630	2,750	1.0
C11 Technical occupations in physical sciences	210	210	0.0
C111 Chemical technologists and technicians	90	90	0.4
C112 Geological and mineral technologists and technicians	120	120	-0.4
C113 Meteorological technicians	10	10	0.7
C12 Technical occupations in life sciences	570	610	1.4
C121 Biological technologists and technicians	90	90	0.8
C122 Agricultural and fish products inspectors	20	20	0.4
C123 Forestry technologists and technicians	290	320	2.1
C124 Conservation and fishery officers	70	70	0.3
C125 Landscape and horticultural technicians and specialists	100	110	0.9
C13 Technical occupations in civil, mechanical and industrial engineering	180	180	0.1
C131 Civil engineering technologists and technicians	60	60	0.6
C132 Mechanical engineering technologists and technicians	40	40	0.6
C133 Industrial engineering and manufacturing technologists and technicians	20	20	1.4
C134 Construction estimators	60	60	-1.0
C14 Technical occupations in electronics and electrical engineering	440	450	0.8
C141 Electrical and electronics engineering technologists and technicians	80	80	0.6
C142 Electronic service technicians (household and business equipment)	270	280	0.9
C143 Industrial instrument technicians and mechanics	60	60	0.7
C144 Aircraft instrument, electrical and avionics mechanics, technicians and inspectors	30	40	1.2
C15 Technical occupations in architecture, drafting, surveying and mapping	280	290	1.0
C151 Architectural technologists and technicians	20	20	0.7
C152 Industrial designers	20	20	1.1
C153 Drafting technologists and technicians	140	150	1.0
C154 Land survey technologists and technicians	20	20	0.6
C155 Mapping and related technologists and technicians	70	70	1.5
C16 Other technical inspectors and regulatory officers	250	260	0.4
C161 Non-destructive testers and inspectors	20	20	1.0
C162 Engineering inspectors and regulatory officers	20	20	0.7
C163 Inspectors in public and environmental health and occupational health and safety	120	120	0.7
C164 Construction inspectors	110	100	-0.1
C17 Transportation officers and controllers	370	400	1.5
C171 Air pilots, flight engineers and flying instructors	180	200	1.6
C172 Air traffic control and related occupations	40	40	1.5
C173 Deck officers, water transport	100	110	1.5
C174 Engineer officers, water transport	40	50	1.4
C175 Railway traffic controllers and marine traffic regulators	-	10	-
C18 Technical occupations in computer and information systems	330	350	1.2
C181 Computer network technicians	120	130	1.0
C182 User support technicians	210	220	1.2
C183 Systems testing technicians	10	10	1.9
D Health occupations	5,160	5,670	2.0
D0 Professional occupations in health	830	900	1.9
D01 Physicians, dentists and veterinarians	440	480	2.0

Thompson Rivers College Region

Projected Annual Growth Rates in Occupational Demand

	Estimated Employment		Avg Annual % Chng Over 5 Years
	2008	2013	2008 to 2013
D011 Specialist physicians	110	120	2.1
D012 General practitioners and family physicians	200	220	2.1
D013 Dentists	80	90	2.1
D014 Veterinarians	40	40	1.5
D02 Optometrists, chiropractors and other health diagnosing and treating professionals	60	60	2.1
D021 Optometrists	20	20	2.1
D022 Chiropractors	30	40	2.1
D023 Other professional occupations in health diagnosing and treating	10	10	2.1
D03 Pharmacists, dietitians and nutritionists	140	150	1.5
D031 Pharmacists	110	110	1.3
D032 Dietitians and nutritionists	30	40	2.0
D04 Therapy and assessment professionals	190	210	1.9
D041 Audiologists and speech-language pathologists	40	40	1.3
D042 Physiotherapists	80	90	2.1
D043 Occupational therapists	50	50	2.1
D044 Other professional occupations in therapy and assessment	30	30	1.8
D1 Nurse supervisors and registered nurses	1,520	1,670	2.0
D11 Nurse supervisors and registered nurses	1,520	1,670	2.0
D111 Head nurses and supervisors	40	50	2.0
D112 Registered nurses	1,480	1,630	2.0
D2 Technical and related occupations in health	1,260	1,380	1.9
D21 Medical technologists and technicians (except dental health)	410	450	2.0
D211 Medical laboratory technologists and pathologists' assistants	90	100	2.1
D212 Medical laboratory technicians	100	110	2.1
D213 Veterinary and animal health technologists and technicians	60	70	1.6
D214 Respiratory therapists, clinical perfusionists and cardio-pulmonary technologists	30	30	2.0
D215 Medical radiation technologists	90	100	2.1
D216 Medical sonographers	10	10	2.1
D217 Cardiology technologists	10	10	2.1
D218 Electroencephalographic and other diagnostic technologists, n.e.c.	-	-	-
D219 Other medical technologists and technicians (except dental health)	10	10	1.7
D22 Technical occupations in dental health care	120	130	2.0
D221 Denturists	10	10	1.6
D222 Dental hygienists and dental therapists	80	90	2.1
D223 Dental technologists, technicians and laboratory bench workers	30	30	1.7
D23 Other technical occupations in health care (except dental)	730	790	1.8
D231 Opticians	40	40	1.7
D232 Midwives and practitioners of natural healing	50	50	1.9
D233 Licensed practical nurses	250	280	2.1
D234 Ambulance attendants and other paramedical occupations	270	290	1.7
D235 Other technical occupations in therapy and assessment	130	140	1.4
D3 Assisting occupations in support of health services	1,570	1,720	2.0
D31 Assisting occupations in support of health services	1,570	1,720	2.0
D311 Dental assistants	250	280	2.1
D312 Nurse aides, orderlies and patient service associates	1,030	1,140	2.1
D313 Other assisting occupations in support of health services	280	300	1.6
E Occupations in social science, education, government service and religion	6,880	7,140	0.8

Thompson Rivers College Region

Projected Annual Growth Rates in Occupational Demand

	Estimated Employment		Avg Annual % Chng Over 5 Years
	2008	2013	2008 to 2013
E0 Judges, lawyers, psychologists, social workers, ministers of religion, and policy and program officers	1,570	1,650	1.1
E01 Judges, lawyers and Quebec notaries	220	230	1.0
E011 Judges	10	10	0.0
E012 Lawyers and Quebec notaries	210	220	1.0
E02 Psychologists, social workers, counsellors, clergy and probation officers	770	820	1.2
E021 Psychologists	50	60	1.4
E022 Social workers	280	290	1.3
E023 Family, marriage and other related counsellors	200	220	1.8
E024 Ministers of religion	190	200	0.6
E025 Probation and parole officers and related occupations	50	50	0.1
E03 Policy and program officers, researchers and consultants	580	600	0.8
E031 Natural and applied science policy researchers, consultants and program officers	60	60	0.7
E032 Economists and economic policy researchers and analysts	20	20	0.6
E033 Business development officers and marketing researchers and consultants	130	130	1.0
E034 Social policy researchers, consultants and program officers	80	80	0.8
E035 Education policy researchers, consultants and program officers	60	60	0.1
E036 Recreation, sports and fitness program supervisors and consultants	90	90	1.2
E037 Program officers unique to government	50	50	0.0
E038 Other professional occupations in social science, n.e.c.	30	30	1.1
E039 Health policy researchers, consultants and program officers	70	80	1.5
E1 Teachers and professors	3,110	3,120	0.1
E11 University professors and assistants	280	280	0.0
E111 University professors	160	160	0.0
E112 Post-secondary teaching and research assistants	110	110	0.1
E12 College and other vocational instructors	470	480	0.3
E121 College and other vocational instructors	470	480	0.3
E13 Secondary and elementary school teachers and educational counsellors	2,370	2,370	0.0
E131 Secondary school teachers	840	840	0.0
E132 Elementary school and kindergarten teachers	1,410	1,410	0.0
E133 Educational counsellors	120	120	0.1
E2 Paralegals, social services workers and occupations in education and religion, n.e.c.	2,200	2,370	1.6
E21 Paralegals, social services workers and occupations in education and religion, n.e.c.	2,200	2,370	1.6
E211 Paralegal and related occupations	140	150	1.0
E212 Community and social service workers	810	880	1.7
E213 Employment counsellors	110	120	1.0
E214 Instructors and teachers of persons with disabilities	30	30	0.7
E215 Other instructors	130	130	0.1
E216 Other religious occupations	40	40	0.7
E217 Early childhood educators and assistants	940	1,040	2.0
F Occupations in art, culture, recreation and sport	2,370	2,480	0.9
F0 Professional occupations in art and culture	830	870	0.9
F01 Librarians, archivists, conservators and curators	70	80	1.3
F011 Librarians	60	60	1.3
F012 Conservators and curators	10	10	1.4

Thompson Rivers College Region

Projected Annual Growth Rates in Occupational Demand

	Estimated Employment		Avg Annual % Chng Over 5 Years
	2008	2013	2008 to 2013
F013 Archivists	-	-	-
F02 Writing, translating and public relations professionals	320	340	1.0
F021 Authors and writers	110	120	1.1
F022 Editors	60	60	1.0
F023 Journalists	50	50	0.9
F024 Professional occupations in public relations and communications	80	80	1.0
F025 Translators, terminologists and interpreters	20	20	0.7
F03 Creative and performing artists	440	460	0.8
F031 Producers, directors, choreographers and related occupations	40	50	1.4
F032 Conductors, composers and arrangers	10	10	0.9
F033 Musicians and singers	170	180	0.4
F034 Dancers	40	40	0.1
F035 Actors and comedians	20	20	1.4
F036 Painters, sculptors and other visual artists	160	170	1.3
F1 Technical occupations in art, culture, recreation and sport	1,540	1,610	0.9
F11 Technical occupations in libraries, archives, museums and art galleries	110	110	1.0
F111 Library and archive technicians and assistants	80	80	0.8
F112 Technical occupations related to museums and art galleries	30	40	1.3
F12 Photographers, graphic arts technicians and technical and co-ordinating occupations in motion pictures, broadcasting and the performing arts	190	200	1.2
F121 Photographers	70	70	1.5
F122 Film and video camera operators	20	20	1.4
F123 Graphic arts technicians	10	10	0.2
F124 Broadcast technicians	10	10	1.1
F125 Audio and video recording technicians	20	30	1.0
F126 Other technical and co-ordinating occupations in motion pictures, broadcasting and the performing arts	20	20	1.3
F127 Support occupations in motion pictures, broadcasting and the performing arts	30	30	0.8
F13 Announcers and other performers	60	60	1.4
F131 Announcers and other broadcasters	50	50	1.4
F132 Other performers	10	10	1.5
F14 Creative designers and craftspersons	520	530	0.6
F141 Graphic designers and illustrators	220	210	-0.2
F142 Interior designers	70	80	0.9
F143 Theatre, fashion, exhibit and other creative designers	30	30	1.1
F144 Artisans and craftspersons	200	210	1.3
F145 Patternmakers - Textile, leather and fur products	-	-	-
F15 Athletes, coaches, referees and related occupations	670	700	1.1
F151 Athletes	20	20	1.3
F152 Coaches	70	70	0.6
F153 Sports officials and referees	60	70	1.2
F154 Program leaders and instructors in recreation, sport and fitness	520	550	1.1
G Sales and service occupations	23,730	25,140	1.2
G0 Sales and service supervisors	760	810	1.3
G01 Sales and service supervisors	760	810	1.3
G011 Retail trade supervisors	370	390	1.2
G012 Food service supervisors	230	250	1.6

Thompson Rivers College Region

Projected Annual Growth Rates in Occupational Demand

	Estimated Employment		Avg Annual % Chng Over 5 Years
	2008	2013	2008 to 2013
G013 Executive housekeepers	50	50	1.5
G014 Dry cleaning and laundry supervisors	10	10	1.2
G015 Cleaning supervisors	50	50	0.8
G016 Other service supervisors	60	60	1.4
G1 Wholesale, technical, insurance, real estate sales specialists, and retail, wholesale and grain buyers	1,380	1,460	1.1
G11 Sales representatives, wholesale trade	620	660	1.1
G111 Sales representatives, wholesale trade (non-technical)	620	660	1.1
G12 Technical sales specialists, wholesale trade	180	190	1.4
G121 Technical sales specialists, wholesale trade	170	190	1.5
G13 Insurance and real estate sales occupations and buyers	580	610	1.0
G131 Insurance agents and brokers	260	270	1.1
G132 Real estate agents and salespersons	230	240	0.8
G133 Retail and wholesale buyers	90	100	1.2
G134 Grain elevator operators	-	-	-
G2 Retail salespersons and sales clerks	4,050	4,270	1.1
G21 Retail salespersons and sales clerks	4,050	4,270	1.1
G211 Retail salespersons and sales clerks	4,050	4,270	1.1
G3 Cashiers	1,860	1,970	1.2
G31 Cashiers	1,860	1,970	1.2
G311 Cashiers	1,860	1,970	1.2
G4 Chefs and cooks	1,710	1,850	1.7
G41 Chefs and cooks	1,710	1,850	1.7
G411 Chefs	250	280	1.6
G412 Cooks	1,450	1,570	1.7
G5 Occupations in food and beverage service	1,700	1,840	1.7
G51 Occupations in food and beverage service	1,700	1,840	1.7
G511 Maitres d'hôtel and hosts/hostesses	140	150	1.6
G512 Bartenders	250	270	1.6
G513 Food and beverage servers	1,310	1,420	1.7
G6 Occupations in protective services	1,280	1,300	0.3
G61 Police officers and firefighters	460	460	0.0
G611 Police officers (except commissioned)	330	330	0.0
G612 Firefighters	130	130	0.1
G62 Other occupations in protective service	430	440	0.1
G621 Sheriffs and bailiffs	30	30	0.4
G622 Correctional service officers	150	150	0.0
G623 By-law enforcement and other regulatory officers, n.e.c.	60	60	0.2
G624 Other ranks, armed forces	140	140	0.0
G625 Other protective service occupations	60	60	0.5
G63 Security guards and related occupations	380	400	1.0
G631 Security guards and related occupations	380	400	1.0
G7 Occupations in travel and accommodation, including attendants in recreation and sport	1,010	1,080	1.4
G71 Occupations in travel and accommodation	500	540	1.4
G711 Travel counsellors	140	150	0.9
G712 Purser and flight attendants	20	20	1.7
G713 Airline sales and service agents	60	60	1.6

Thompson Rivers College Region

Projected Annual Growth Rates in Occupational Demand

	Estimated Employment		Avg Annual % Chng Over 5 Years
	2008	2013	2008 to 2013
G714 Ticket agents, cargo service representatives and related clerks (except airline)	30	30	1.6
G715 Hotel front desk clerks	250	270	1.7
G72 Tour and recreational guides and casino occupations	250	260	1.3
G721 Tour and travel guides	70	80	1.1
G722 Outdoor sport and recreational guides	100	110	1.3
G723 Casino occupations	80	80	1.4
G73 Other occupations in travel, accommodation, amusement and recreation	260	280	1.3
G731 Operators and attendants in amusement, recreation and sport	230	240	1.3
G732 Other attendants in accommodation and travel	30	30	1.6
G8 Child care and home support workers	1,810	1,890	0.9
G81 Child care and home support workers	1,810	1,890	0.9
G811 Visiting homemakers, housekeepers and related occupations	660	720	1.8
G812 Elementary and secondary school teacher assistants	720	720	0.0
G814 Babysitters, nannies and parents' helpers	430	450	1.1
G9 Sales and service occupations, n.e.c.	8,190	8,680	1.2
G91 Technical occupations in personal service	420	430	0.6
G911 Hairstylists and barbers	400	410	0.6
G912 Funeral directors and embalmers	20	20	0.6
G92 Other occupations in personal service	290	310	0.8
G921 Image, social and other personal consultants	30	30	0.9
G922 Estheticians, electrologists and related occupations	160	170	0.7
G923 Pet groomers and animal care workers	100	110	0.8
G924 Other personal service occupations	10	10	0.8
G93 Cleaners	3,400	3,580	1.0
G931 Light duty cleaners	1,390	1,490	1.3
G932 Specialized cleaners	310	320	0.9
G933 Janitors, caretakers and building superintendents	1,700	1,770	0.8
G94 Butchers and bakers, retail and wholesale	350	380	1.3
G941 Butchers, meat cutters and fishmongers, retail and wholesale	150	160	1.2
G942 Bakers	210	220	1.3
G96 Food counter attendants, kitchen helpers and related occupations	2,170	2,350	1.6
G961 Food counter attendants, kitchen helpers and related occupations	2,170	2,350	1.7
G97 Other sales and related occupations	1,330	1,400	1.1
G971 Service station attendants	270	290	1.1
G972 Grocery clerks and store shelf stockers	840	890	1.2
G973 Other elemental sales occupations	220	230	1.1
G98 Other elemental service occupations	220	230	1.1
G981 Dry cleaning and laundry occupations	110	120	1.2
G982 Ironing, pressing and finishing occupations	20	20	0.8
G983 Other elemental service occupations	90	100	1.0
H Trades, transport and equipment operators and related occupations	19,460	19,460	0.0
H0 Contractors and supervisors in trades and transportation	910	880	-0.6
H01 Contractors and supervisors, trades and related workers	850	810	-0.8
H011 Supervisors, machinists and related occupations	20	20	1.3
H012 Contractors and supervisors, electrical trades and telecommunications occupations	80	80	-1.1

Thompson Rivers College Region

Projected Annual Growth Rates in Occupational Demand

	Estimated Employment		Avg Annual % Chng Over 5 Years
	2008	2013	2008 to 2013
H013 Contractors and supervisors, pipefitting trades	30	30	-1.1
H014 Contractors and supervisors, metal forming, shaping and erecting trades	50	50	0.3
H015 Contractors and supervisors, carpentry trades	130	120	-1.3
H016 Contractors and supervisors, mechanic trades	110	110	0.8
H017 Contractors and supervisors, heavy construction equipment crews	210	200	-0.5
H018 Supervisors, printing and related occupations	20	20	-3.9
H019 Contractors and supervisors, other construction trades, installers, repairers and servicers	200	180	-1.5
H02 Supervisors, railway and motor transportation occupations	60	70	1.2
H021 Supervisors, railway transport operations	20	20	1.7
H022 Supervisors, motor transport and other ground transit operators	40	50	1.1
H1 Construction trades	3,940	3,660	-1.4
H11 Plumbers, pipefitters and gas fitters	530	500	-1.2
H111 Plumbers	310	290	-1.6
H112 Steamfitters, pipefitters and sprinkler system installers	150	150	-0.5
H113 Gas fitters	60	60	-1.0
H12 Carpenters and cabinetmakers	1,870	1,750	-1.4
H121 Carpenters	1,740	1,610	-1.5
H122 Cabinetmakers	140	140	0.4
H13 Masonry and plastering trades	600	550	-1.7
H131 Bricklayers	100	100	-1.6
H132 Concrete finishers	90	80	-1.7
H133 Tilesetters	70	70	-1.8
H134 Plasterers, drywall installers and finishers and lathers	330	300	-1.7
H14 Other construction trades	940	870	-1.5
H141 Roofers and shinglers	210	190	-1.8
H142 Glaziers	70	70	-0.3
H143 Insulators	70	60	-1.3
H144 Painters and decorators	430	400	-1.6
H145 Floor covering installers	160	150	-1.3
H2 Stationary engineers, power station operators and electrical trades and telecommunications occupations	1,200	1,180	-0.4
H21 Electrical trades and telecommunications occupations	1,100	1,070	-0.5
H211 Electricians (except industrial and power system)	540	490	-1.7
H212 Industrial electricians	270	280	0.6
H213 Power system electricians	30	30	0.2
H214 Electrical power line and cable workers	80	80	-0.5
H215 Telecommunications line and cable workers	50	50	1.0
H216 Telecommunications installation and repair workers	90	100	1.2
H217 Cable television service and maintenance technicians	30	40	1.3
H22 Stationary engineers and power station and system operators	110	110	1.0
H221 Stationary engineers and auxiliary equipment operators	90	90	1.1
H222 Power systems and power station operators	20	20	0.2
H3 Machinists, metal forming, shaping and erecting occupations	880	900	0.5
H31 Machinists and related occupations	120	130	1.7
H311 Machinists and machining and tooling inspectors	110	120	1.6
H312 Tool and die makers	10	10	2.1
H32 Metal forming, shaping and erecting trades	760	780	0.3

Thompson Rivers College Region

Projected Annual Growth Rates in Occupational Demand

	Estimated Employment		Avg Annual % Chng Over 5 Years
	2008	2013	2008 to 2013
H321 Sheet metal workers	120	110	-0.8
H322 Boilermakers	30	30	1.0
H323 Structural metal and platework fabricators and fitters	60	70	1.0
H324 Ironworkers	70	60	-0.8
H325 Blacksmiths and die setters	-	-	-
H326 Welders and related machine operators	490	510	0.6
H4 Mechanics	2,620	2,710	0.7
H41 Machinery and transportation equipment mechanics (except motor vehicle)	1,550	1,590	0.6
H411 Construction millwrights and industrial mechanics (except textile)	660	700	1.1
H412 Heavy-duty equipment mechanics	640	640	0.3
H413 Refrigeration and air conditioning mechanics	90	90	-1.2
H414 Railway carmen/women	30	30	1.8
H415 Aircraft mechanics and aircraft inspectors	110	110	1.5
H416 Machine fitters	10	10	0.2
H417 Textile machinery mechanics and repairers	-	-	-
H418 Elevator constructors and mechanics	10	10	-1.4
H42 Automotive service technicians	910	950	0.8
H421 Automotive service technicians, truck and bus mechanics and mechanical repairers	760	800	0.9
H422 Motor vehicle body repairers	150	150	0.7
H43 Other mechanics	160	160	0.8
H431 Oil and solid fuel heating mechanics	10	10	-0.6
H432 Electric appliance servicers and repairers	40	40	0.4
H433 Electrical mechanics	20	20	0.5
H434 Motorcycle and other related mechanics	20	30	1.1
H435 Other small engine and equipment mechanics	60	60	1.1
H5 Other trades, n.e.c.	830	840	0.1
H51 Upholsterers, tailors, shoe repairers, jewellers and related occupations	110	110	0.7
H511 Upholsterers	30	30	0.8
H512 Tailors, dressmakers, furriers and milliners	50	60	0.6
H513 Shoe repairers and shoemakers	-	-	-
H514 Jewellers, watch repairers and related occupations	20	20	1.0
H52 Printing press operators, commercial divers and other trades and related occupations, n.e.c.	230	240	0.4
H521 Printing press operators	60	50	-3.2
H522 Commercial divers	20	20	0.7
H523 Other trades and related occupations	160	170	1.9
H53 Other installers, repairers and servicers	490	490	-0.1
H531 Residential and commercial installers and servicers	260	250	-1.0
H532 Waterworks and gas maintenance workers	30	30	0.0
H533 Automotive mechanical installers and servicers	110	110	0.9
H534 Pest controllers and fumigators	20	20	0.6
H535 Other repairers and servicers	80	80	1.1
H6 Heavy equipment and crane operators, including drillers	1,680	1,610	-0.8
H61 Heavy equipment operators	1,520	1,460	-0.8
H611 Heavy equipment operators (except crane)	1,420	1,350	-1.0
H612 Public works maintenance equipment operators	110	120	0.9
H62 Crane operators, drillers and blasters	150	150	-0.4

Thompson Rivers College Region

Projected Annual Growth Rates in Occupational Demand

	Estimated Employment		Avg Annual % Chng Over 5 Years
	2008	2013	2008 to 2013
H621 Crane operators	80	80	0.0
H622 Drillers and blasters - Surface mining, quarrying and construction	50	50	-0.7
H623 Water well drillers	20	20	-1.5
H7 Transportation equipment operators and related workers, excluding labourers	4,260	4,530	1.3
H71 Motor vehicle and transit drivers	3,830	4,070	1.2
H711 Truck drivers	2,750	2,910	1.2
H712 Bus drivers and subway and other transit operators	350	370	1.3
H713 Taxi and limousine drivers and chauffeurs	200	220	1.6
H714 Delivery and courier service drivers	530	570	1.4
H72 Train crew operating occupations	160	170	1.6
H721 Railway and yard locomotive engineers	70	80	1.6
H722 Railway conductors and brakemen/women	90	90	1.7
H73 Other transport equipment operators and related workers	270	290	1.5
H731 Railway yard workers	10	10	1.9
H732 Railway track maintenance workers	60	60	1.6
H733 Deck crew, water transport	110	120	1.5
H734 Engine room crew, water transport	10	10	1.4
H735 Lock and cable ferry operators and related occupations	40	40	1.4
H736 Boat operators	20	30	1.9
H737 Air transport ramp attendants	20	20	1.5
H8 Trades helpers, construction and transportation labourers and related occupations	3,140	3,150	0.1
H81 Longshore workers and material handlers	1,250	1,350	1.6
H811 Longshore workers	60	60	1.3
H812 Material handlers	1,190	1,280	1.6
H82 Trades helpers and labourers	1,670	1,570	-1.2
H821 Construction trades helpers and labourers	1,590	1,490	-1.2
H822 Other trades helpers and labourers	80	80	0.4
H83 Public works and other labourers, n.e.c.	220	230	0.7
H831 Public works and maintenance labourers	180	190	0.5
H832 Railway and motor transport labourers	40	50	1.5
I Occupations unique to primary industry	5,700	6,000	1.1
I0 Occupations unique to agriculture, excluding labourers	2,040	2,110	0.7
I01 Contractors, operators and supervisors in agriculture, horticulture and aquaculture	1,130	1,170	0.7
I011 Farmers and farm managers	850	870	0.6
I012 Agricultural and related service contractors and managers	-	-	-
I013 Farm supervisors and specialized livestock workers	60	60	0.7
I014 Nursery and greenhouse operators and managers	40	40	1.2
I015 Landscaping and grounds maintenance contractors and managers	90	100	0.8
I016 Supervisors, landscape and horticulture	60	70	0.9
I017 Aquaculture operators and managers	30	30	0.6
I02 Agriculture and horticulture workers	900	940	0.7
I021 General farm workers	650	670	0.6
I022 Nursery and greenhouse workers	260	270	0.9
I1 Occupations unique to forestry operations, mining, oil and gas extraction and fishing, excluding labourers	1,670	1,790	1.4
I11 Supervisors, logging and forestry	120	140	3.1
I111 Supervisors, logging and forestry	120	140	3.1

Thompson Rivers College Region

Projected Annual Growth Rates in Occupational Demand

	Estimated Employment		Avg Annual % Chng Over 5 Years
	2008	2013	2008 to 2013
I12 Supervisors, mining, oil and gas	250	240	-1.1
I121 Supervisors, mining and quarrying	210	200	-1.5
I122 Supervisors, oil and gas drilling and service	40	50	1.2
I13 Underground miners, oil and gas drillers and related workers	310	300	-0.7
I131 Underground production and development miners	240	230	-1.2
I132 Oil and gas well drillers, servicers, testers and related workers	60	70	1.2
I14 Mine service workers and operators in oil and gas drilling	140	150	0.2
I141 Underground mine service and support workers	70	70	-0.9
I142 Oil and gas well drilling workers and services operators	70	70	1.2
I15 Logging machinery operators	420	490	3.3
I151 Logging machinery operators	420	490	3.3
I16 Logging and forestry workers	390	440	2.7
I161 Chain saw and skidder operators	270	310	3.0
I162 Silviculture and forestry workers	120	130	1.9
I17 Fishing vessel masters and skippers and fishermen/women	20	20	0.3
I171 Fishing masters and officers	-	-	-
I172 Fishing vessel skippers and fishermen/women	20	20	0.3
I18 Other fishing and trapping occupations	10	10	1.0
I181 Fishing vessel deckhands	10	10	0.4
I182 Trappers and hunters	-	-	-
I2 Primary production labourers	1,990	2,110	1.1
I21 Primary production labourers	1,990	2,110	1.1
I211 Harvesting labourers	140	150	0.6
I212 Landscaping and grounds maintenance labourers	1,200	1,250	0.9
I213 Aquaculture and marine harvest labourers	30	30	0.6
I214 Mine labourers	120	110	-1.3
I215 Oil and gas drilling, servicing and related labourers	120	130	1.1
I216 Logging and forestry labourers	380	440	3.0
J Occupations unique to processing, manufacturing and utilities	4,090	4,460	1.8
J0 Supervisors in manufacturing	310	340	2.1
J01 Supervisors, processing occupations	270	300	2.2
J011 Supervisors, mineral and metal processing	20	20	1.7
J012 Supervisors, petroleum, gas and chemical processing and utilities	30	40	0.8
J013 Supervisors, food, beverage and tobacco processing	10	10	1.1
J014 Supervisors, plastic and rubber products manufacturing	-	-	-
J015 Supervisors, forest products processing	200	220	2.5
J016 Supervisors, textile processing	-	-	-
J02 Supervisors, assembly and fabrication	40	40	2.0
J021 Supervisors, motor vehicle assembling	-	-	-
J022 Supervisors, electronics manufacturing	-	-	-
J023 Supervisors, electrical products manufacturing	-	-	-
J024 Supervisors, furniture and fixtures manufacturing	10	10	1.5
J025 Supervisors, fabric, fur and leather products manufacturing	-	-	-
J026 Supervisors, other mechanical and metal products manufacturing	10	10	1.9
J027 Supervisors, other products manufacturing and assembly	10	10	2.4
J1 Machine operators in manufacturing	1,880	2,030	1.6
J11 Central control and process operators in manufacturing and processing	150	150	0.4

Thompson Rivers College Region

Projected Annual Growth Rates in Occupational Demand

	Estimated Employment		Avg Annual % Chng Over 5 Years
	2008	2013	2008 to 2013
J111 Central control and process operators, mineral and metal processing	60	60	-0.4
J112 Petroleum, gas and chemical process operators	40	50	1.2
J113 Pulping control operators	10	10	0.8
J114 Papermaking and coating control operators	30	30	0.7
J12 Machine operators and related workers in metal and mineral products processing	120	120	0.3
J121 Machine operators, mineral and metal processing	60	60	-0.5
J122 Foundry workers	10	10	1.9
J123 Glass forming and finishing machine operators and glass cutters	10	10	1.9
J124 Concrete, clay and stone forming operators	20	20	1.2
J125 Inspectors and testers, mineral and metal processing	20	20	0.2
J13 Machine operators and related workers in chemical, plastic and rubber processing	90	90	0.9
J131 Chemical plant machine operators	10	10	-0.1
J132 Plastics processing machine operators	20	20	2.3
J133 Rubber processing machine operators and related workers	10	10	1.6
J134 Water and waste plant operators	60	60	0.2
J14 Machine operators and related workers in pulp and paper production and wood processing	940	1,070	2.6
J141 Sawmill machine operators	490	560	2.8
J142 Pulp mill machine operators	50	50	0.8
J143 Papermaking and finishing machine operators	20	20	1.1
J144 Other wood processing machine operators	150	170	2.7
J145 Paper converting machine operators	10	10	0.9
J146 Lumber graders and other wood processing inspectors and graders	220	250	2.7
J15 Machine operators and related workers in textile processing	20	20	0.6
J151 Textile fibre and yarn preparation machine operators	-	-	-
J152 Weavers, knitters and other fabric-making occupations	20	20	1.2
J153 Textile dyeing and finishing machine operators	10	-	-
J154 Textile inspectors, graders and samplers	-	-	-
J16 Machine operators and related workers in fabric, fur and leather products manufacturing	50	60	1.0
J161 Sewing machine operators	50	50	1.0
J162 Fabric, fur and leather cutters	-	-	-
J163 Hide and pelt processing workers	-	-	-
J164 Inspectors and testers, fabric, fur and leather products manufacturing	-	-	-
J17 Machine operators and related workers in food, beverage and tobacco processing	160	160	1.1
J171 Process control and machine operators, food and beverage processing	70	80	1.1
J172 Industrial butchers and meat cutters, poultry preparers and related workers	20	20	1.0
J173 Fish plant workers	50	50	1.1
J174 Tobacco processing machine operators	-	-	-
J175 Testers and graders, food and beverage processing	20	20	1.0
J18 Printing machine operators and related occupations	150	140	-1.7
J181 Printing machine operators	40	40	-2.7
J182 Camera, platemaking and other pre-press occupations	20	20	-3.9
J183 Binding and finishing machine operators	30	20	-3.8
J184 Photographic and film processors	60	60	1.0
J19 Machining, metalworking, woodworking and related machine operators	200	220	2.0
J191 Machining tool operators	20	20	1.2
J192 Forging machine operators	-	-	-

Thompson Rivers College Region

Projected Annual Growth Rates in Occupational Demand

	Estimated Employment		Avg Annual % Chng Over 5 Years
	2008	2013	2008 to 2013
J193 Woodworking machine operators	140	150	2.1
J194 Metalworking machine operators	30	40	1.9
J196 Other metal products machine operators	10	10	0.9
J197 Other products machine operators	-	-	-
J2 Assemblers in manufacturing	480	530	1.9
J21 Mechanical, electrical and electronics assemblers	70	70	1.6
J211 Aircraft assemblers and aircraft assembly inspectors	-	-	-
J212 Motor vehicle assemblers, inspectors and testers	20	20	1.3
J213 Electronics assemblers, fabricators, inspectors and testers	10	10	1.8
J214 Assemblers and inspectors, electrical appliance, apparatus and equipment manufacturing	10	10	1.7
J215 Assemblers, fabricators and inspectors, industrial electrical motors and transformers	-	-	-
J216 Mechanical assemblers and inspectors	20	20	2.0
J217 Machine operators and inspectors, electrical apparatus manufacturing	-	-	-
J22 Other assembly and related occupations	420	460	2.0
J221 Boat assemblers and inspectors	20	20	1.3
J222 Furniture and fixture assemblers and inspectors	100	100	1.7
J223 Other wood products assemblers and inspectors	180	200	2.7
J224 Furniture finishers and refinishers	40	40	1.0
J225 Plastic products assemblers, finishers and inspectors	10	20	2.5
J226 Painters and coaters, industrial	30	40	1.1
J227 Plating, metal spraying and related operators	-	-	-
J228 Other assemblers and inspectors	30	30	1.6
J3 Labourers in processing, manufacturing and utilities	1,430	1,570	2.1
J31 Labourers in processing, manufacturing and utilities	1,430	1,570	2.1
J311 Labourers in mineral and metal processing	50	50	1.0
J312 Labourers in metal fabrication	40	40	1.7
J313 Labourers in chemical products processing and utilities	20	20	0.9
J314 Labourers in wood, pulp and paper processing	930	1,060	2.6
J315 Labourers in rubber and plastic products manufacturing	20	20	2.6
J316 Labourers in textile processing	10	10	1.7
J317 Labourers in food, beverage and tobacco processing	150	150	1.2
J318 Labourers in fish processing	30	30	1.1
J319 Other labourers in processing, manufacturing and utilities	190	190	0.5