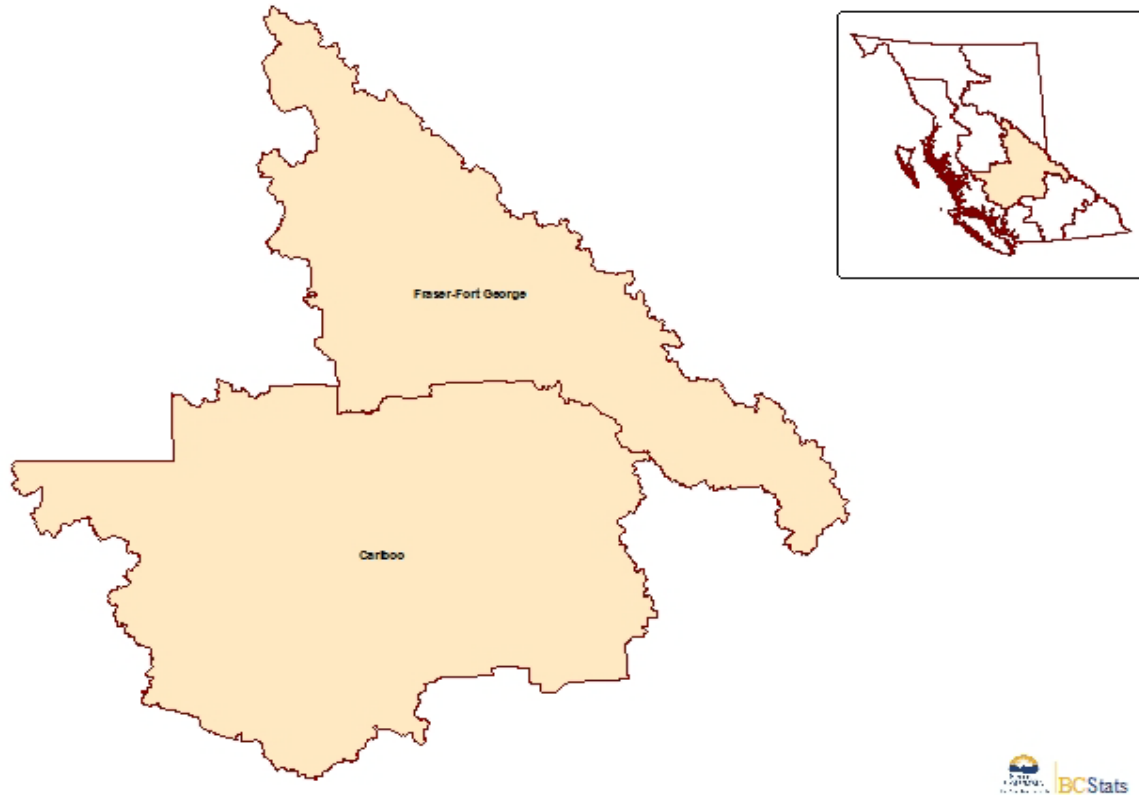


British Columbia: Regional Employment Projection Model

INDUSTRY AND OCCUPATION PROJECTIONS: 2008 to 2013
Cariboo Development Region



Geographic Location of Population				
Major Cities	Population 2006 Census	% of Region	Land Area Sq Km	Population Density Persons per Sq Km
Prince George, C	70981	46.0	316.0	224.6
Williams Lake, C	10,744	7.0	33.1	324.5
Quesnel, C	9,326	6.0	35.3	263.9
Mackenzie, DM	4,539	2.9	159.1	28.5
100 Mile House, DM	1,885	1.2	51.3	36.7
Valemount, VL	1,018	0.7	5.0	205.2
McBride, VL	660	0.4	4.4	149.0
Wells, DM	236	0.2	159.2	1.5
Rest of region	55,065	35.7	130,571.8	0.4
Total Region	154,454	100.0	131,335.2	1.2
Region as % of BC	3.8		14.2	
Youth age 15-29	29,795			
Youth in Region as % of BC	3.8			

Prepared by: **BC Stats**

Note to Users

All assumptions relating to employment are based on past conditions, modified wherever possible to take into consideration future changes. The resulting employment projections are not necessarily what will be, but rather what could be, given the realization of these conditions. It is certainly possible that unforeseen changes in factors such as economic development, government policy, or land use and zoning will affect future employment. Consequently, the projections should only be regarded as one possible scenario on the future size and distribution of the workforce.

It is important for users to understand that the same set of industries and occupations are reported for each of the 7 Development Regions, regardless of the importance of these industries to any particular regional economy. Some of these industries, while significant to the province overall, may have a very small presence in a particular region. For example, the Beverage Manufacturing industry could show up as the highest growth rate for each region of the province because the wine industry is expected to grow, but this would mean the Thompson-Okanagan Development Region would gain hundreds of jobs while the Northeast would gain 5 to 10 jobs at the most. For this reason, growth rates should be viewed in the context of the size of the occupational or industry grouping to clarify the number of jobs being created or lost and the potential impact the change would have on the local economy.

For information on the Regional Districts contained in the Development Regions, see [Appendix 3: REGIONAL DISTRICT TO DEVELOPMENT REGION CONVERSION](#)

The December 2008 version of the Major Projects Inventory was used in the development of the employment projections for the 2008-2013 version of the REPM. A full listing of all the Major Projects under construction or at the proposal stage can be found at http://www.bcstats.gov.bc.ca/pubs/pr_mproj.asp

Regional Employment Projection Model (REPM)

Contents

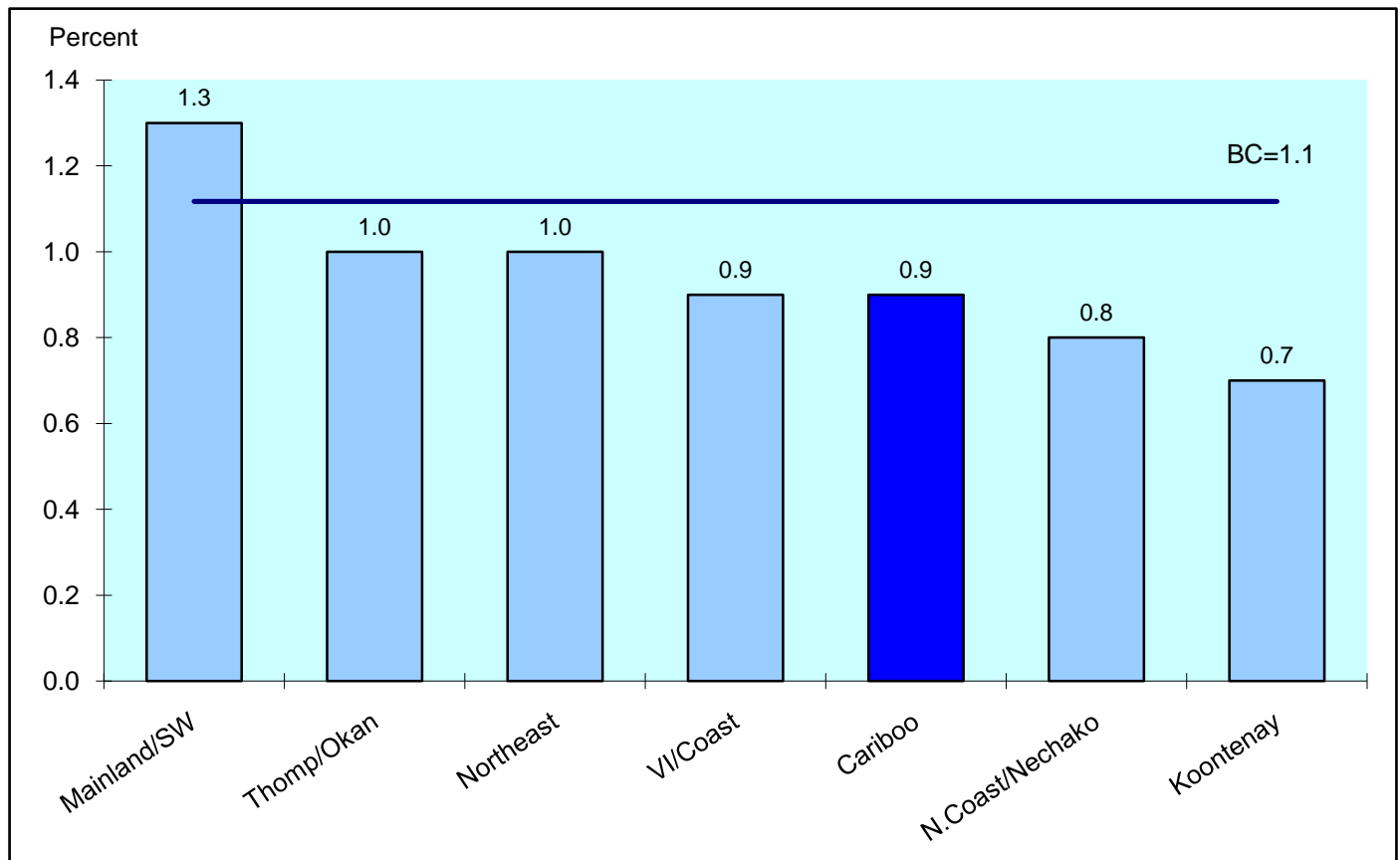
1. Projected Annual Growth in Employment Demand by Development Region
2. Projected Annual Growth in Employment Demand. Comparison between Industries
3. Industrial Structure Compared with BC. Percent Share of Employment by Industry
4. Projected Annual Growth in Employment Demand. Comparison between Occupations
5. Occupational Structure Compared with BC. Percent Share of Employment by Occupation
6. Projected Annual Growth Rates in Occupational Demand, 2-digit occupation

Appendices

1. Summary of the Methodology for the BC REPM
2. COPS Industry Conversion for REPM
3. Regional District to Development Region Conversion for REPM
4. Projected Annual Growth Rates in Occupational Demand (3-digit)
5. Projected Annual Growth Rates in Occupational Demand (4-digit)

Funding for this project was made possible through the Labour Market Information initiative under the Canada-British Columbia Labour Market Agreement (LMA), which is administered for B.C. by the Ministry of Advanced Education and Labour Market Development.

Projected Annual Growth in Employment Demand by Development Region*



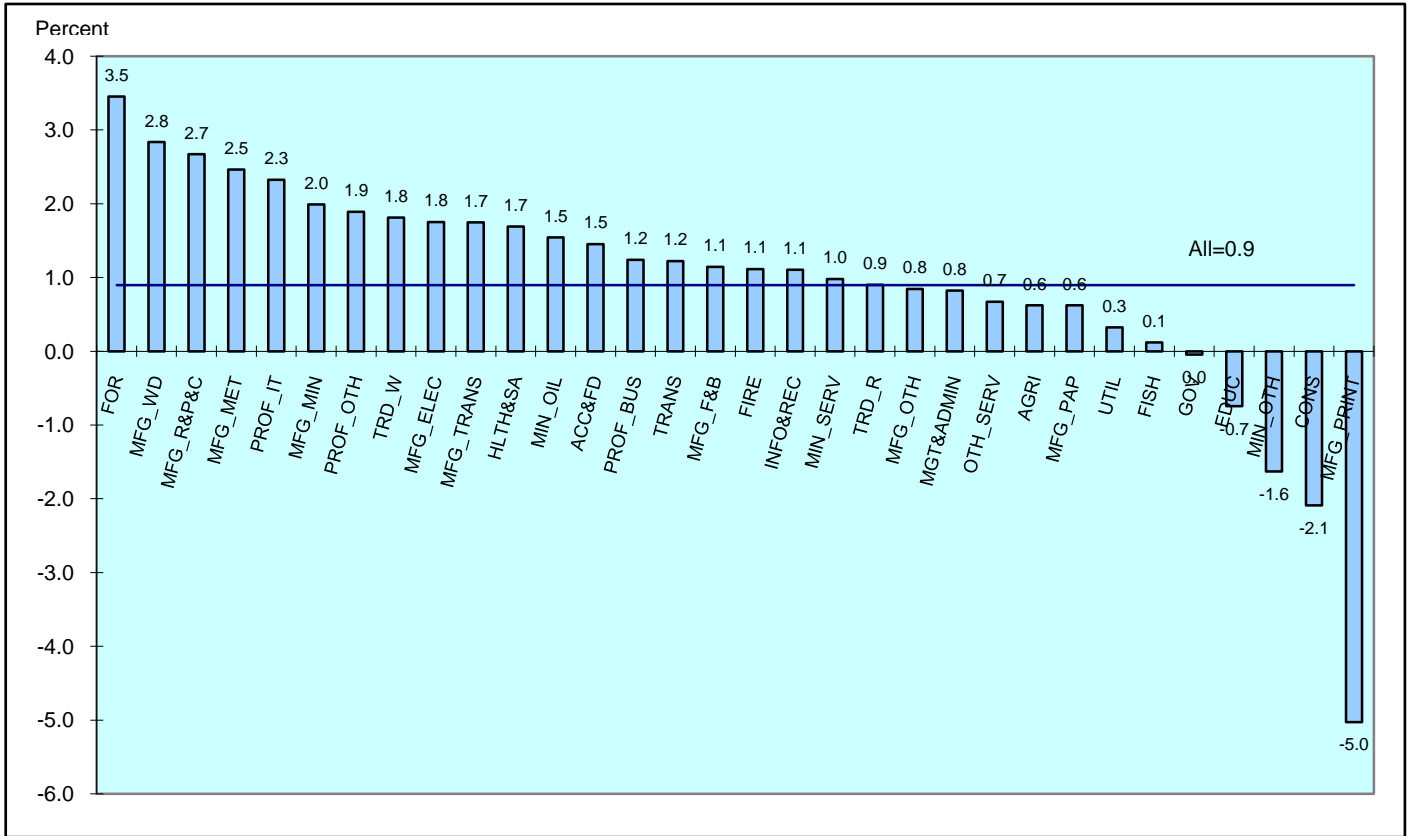
<u>Development Region*</u>	<u>Estimated Employment</u>		<u>Avg Annual % Chng Over 5 Years</u>
	<u>2008</u>	<u>2013</u>	<u>2008 to 2013</u>
Vancouver Island/Coast	391,580	408,700	0.9
Mainland/Southwest	1,397,840	1,485,380	1.3
Thompson-Okanagan	263,110	276,880	1.0
Kootenay	81,900	84,780	0.7
Cariboo	86,070	89,930	0.9
North Coast & Nechako	50,260	52,320	0.8
Northeast	42,940	45,010	1.0
Total	2,313,700	2,443,000	1.1

* See Appendix 3 for details on the Regional Districts included in the Development Regions.

Cariboo Development Region

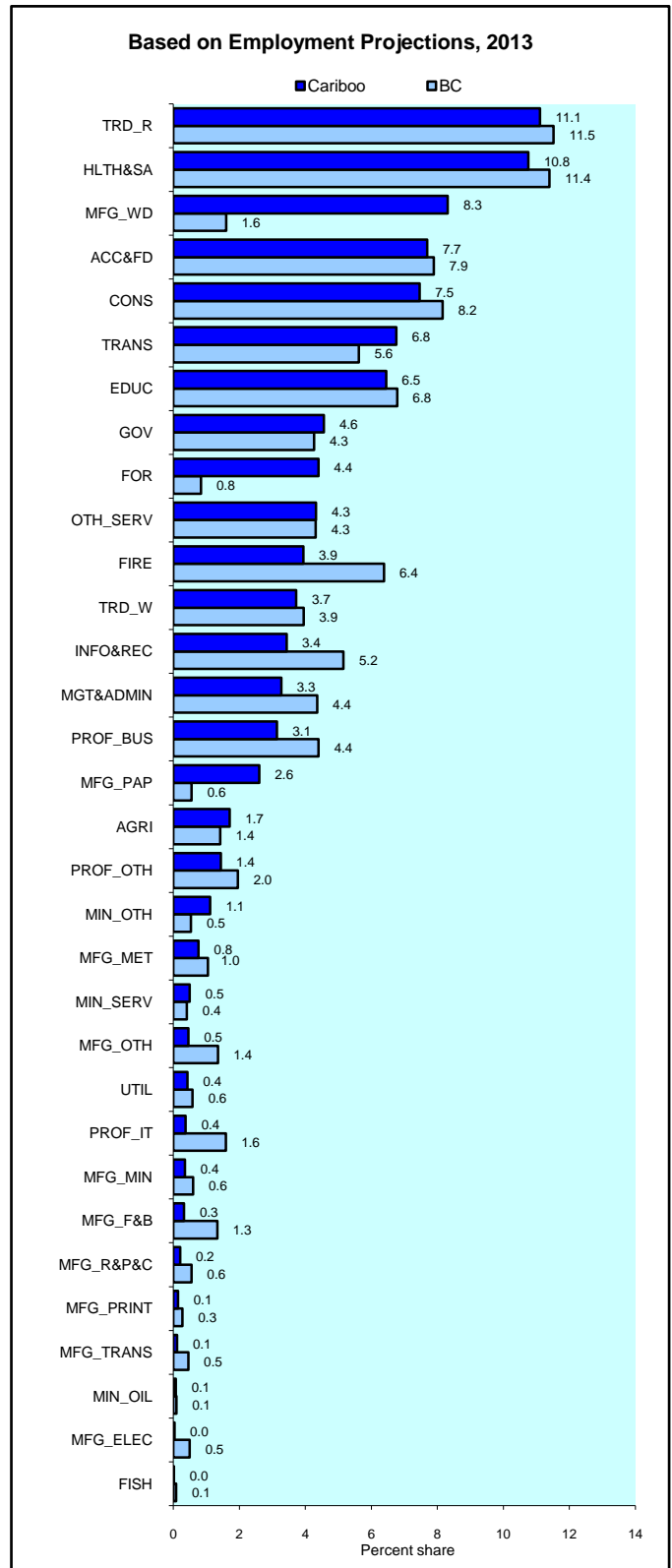
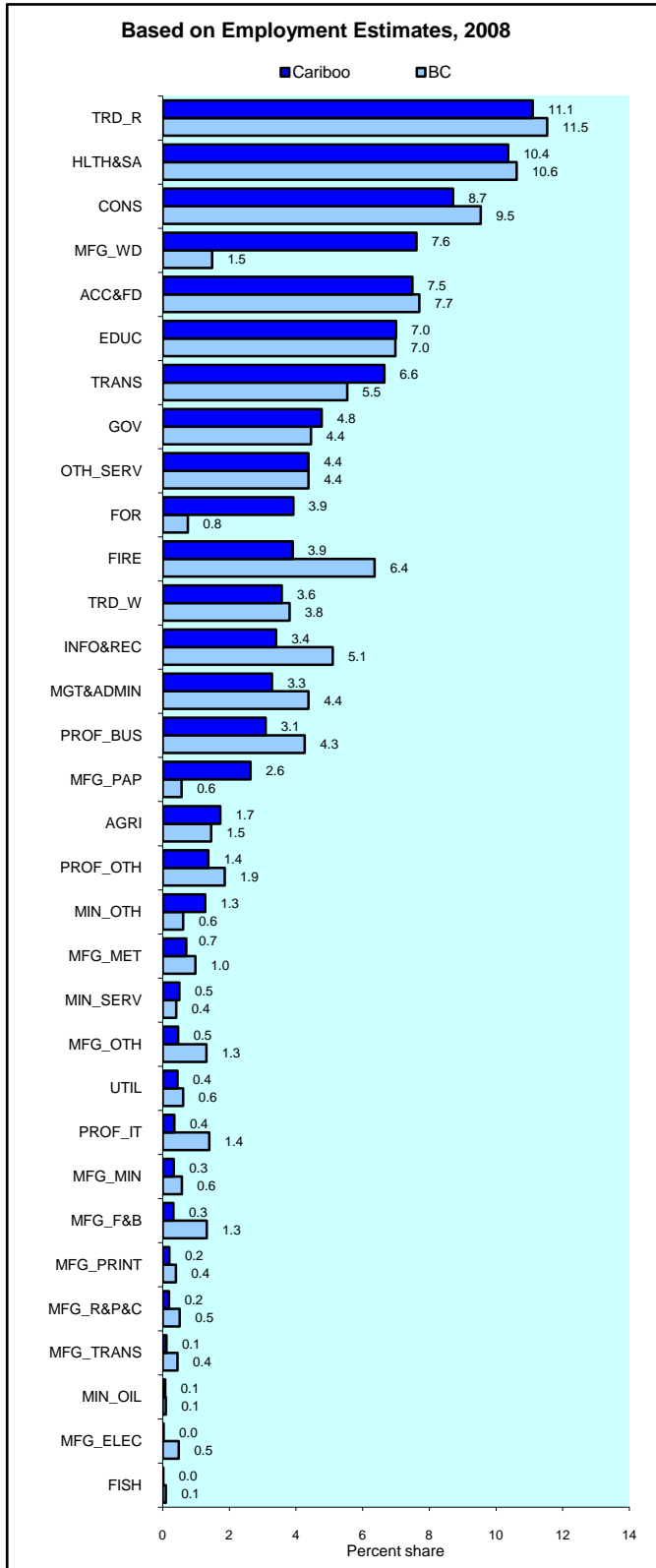
Projected Annual Growth in Employment Demand

Comparison Between Industries



	Avg Annual % Chng Over 5 Years				Avg Annual % Chng Over 5 Years		
	Estimated Employment			Estimated Employment			
Goods Producing Ind	2008	2013	2008 to 2013	Service Producing Ind.	2008	2013	2008 to 2013
Agriculture	1,490	1,540	0.6	Trade--Wholesale	3,070	3,350	1.8
Forestry	3,370	3,950	3.5	Trade--Retail	9,550	9,990	0.9
Fishing, Hunting, & Trapping	20	20	0.1	Transportation	5,720	6,070	1.2
Oil & Gas	70	70	1.5	Finance, Insurance, R.E.	3,350	3,540	1.1
Mining (non Oil & Gas)	1,100	1,010	-1.6	Prof--Bus Services	2,660	2,830	1.2
Services to Mining	430	450	1.0	Prof--Computer Systems	300	340	2.3
Utilities	380	390	0.3	Prof--Other Services	1,180	1,290	1.9
Construction	7,500	6,710	-2.1	Management/Admin/Other :	2,820	2,940	0.8
Mfg--Food & Beverages	280	290	1.1	Education	6,030	5,800	-0.7
Mfg--Wood Products	6,550	7,480	2.8	Health & Social Assist.	8,920	9,670	1.7
Mfg--Paper Products	2,270	2,340	0.6	Information, Culture, Rec	2,920	3,090	1.1
Mfg--Printing	170	130	-5.0	Accom & Food Services	6,440	6,910	1.5
Mfg--Rubber, Plas. Chem	170	190	2.7	Services--other	3,770	3,890	0.7
Mfg--Mineral Products	290	320	2.0	Government	4,110	4,100	0.0
Mfg--Metal Fab & Machinery	610	680	2.5				
Mfg--Comp, Electronic, Elect	30	30	1.8	Total Service Producing	60,860	63,810	1.0
Mfg--Transportation Eq.	100	110	1.7				
Mfg--Other	390	410	0.8	Total, all industries	86,070	89,930	0.9
Total Goods Producing	25,210	26,120	0.7				

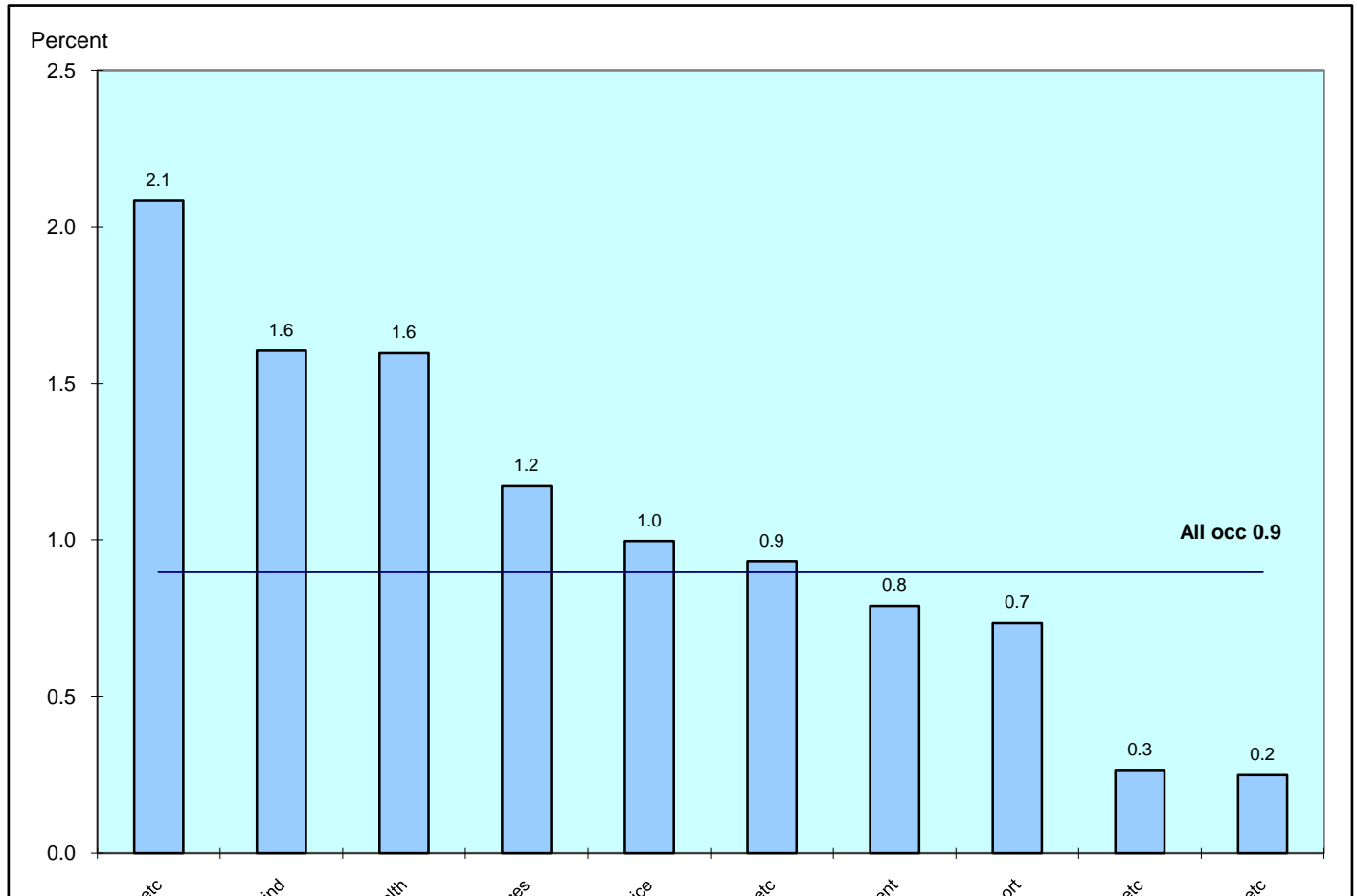
Cariboo Development Region Industrial Structure Compared with BC Percent Share of Employment by Industry



Cariboo Development Region

Projected Annual Growth in Employment Demand

Comparison Between Occupations

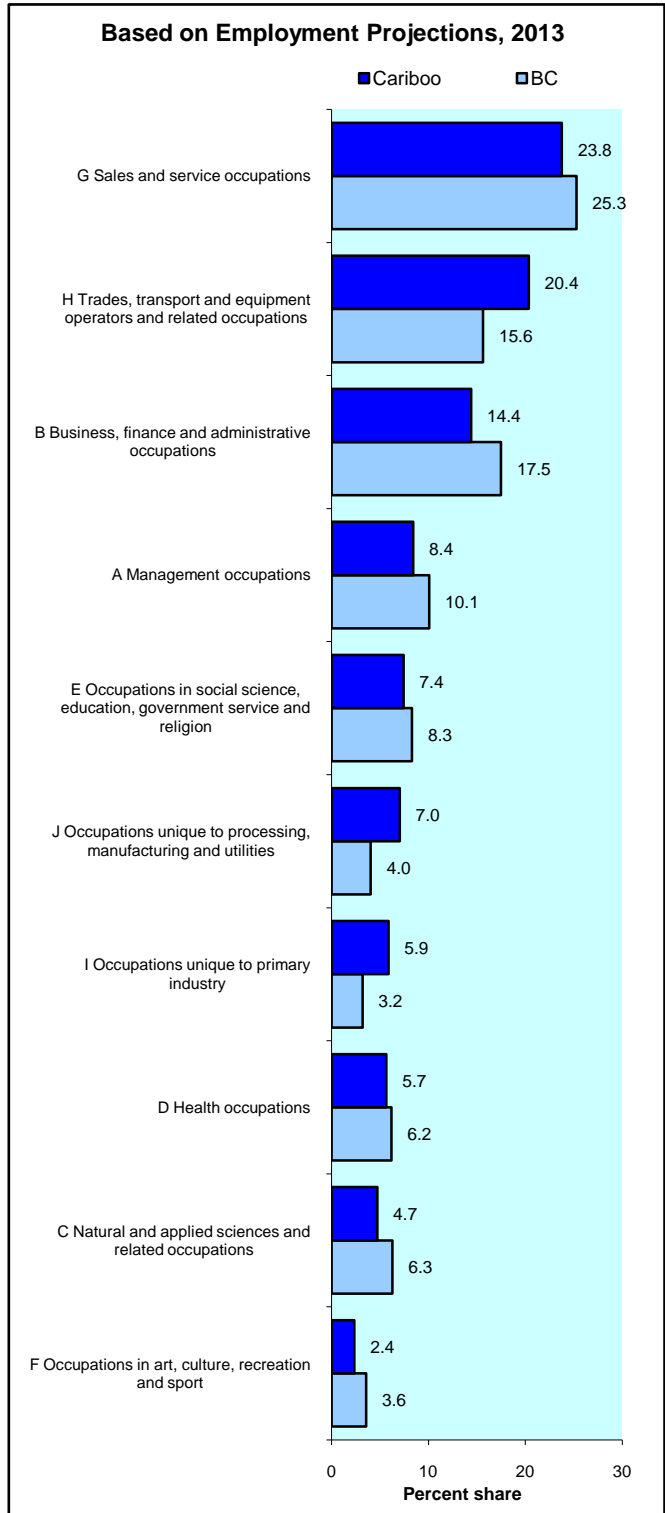
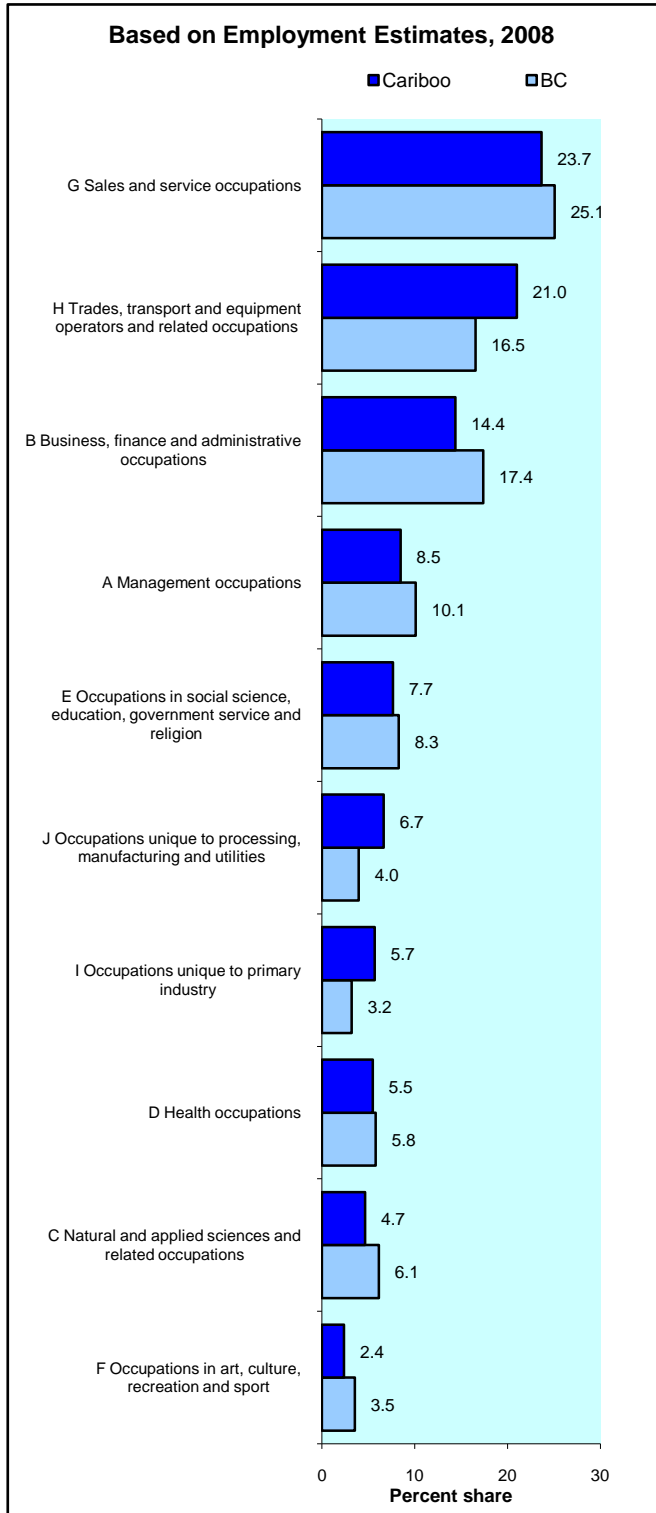


	Estimated Employment		Avg Annual % Chng Over 5 Years
	2008	2013	2008 to 2013
All occupations	86,070	89,930	0.9
A Management occupations	7,290	7,580	0.8
B Business finance and administrative occupations	12,370	12,950	0.9
C Natural and applied sciences and related occupations	4,010	4,240	1.2
D Health occupations	4,710	5,090	1.6
E Occupations in social science, education, government serv, & religion	6,590	6,680	0.3
F Occupations in art culture recreation and sport	2,050	2,120	0.7
G Sales and service occupations	20,360	21,380	1.0
H Trades transport and equipment operators and related occupations	18,080	18,300	0.2
I Occupations unique to primary industry	4,890	5,280	1.6
J Occupations unique to processing manufacturing and utilities	5,730	6,320	2.1

Cariboo Development Region

Occupational Structure Compared with BC

Percent Share of Employment by Occupation



Cariboo Development Region

Projected Annual Growth Rates in Occupational Demand

	Estimated Employment		Avg Annual % Chng Over 5 Years
	<u>2008</u>	<u>2013</u>	<u>2008 to 2013</u>
	All occupations	86,070	89,930
A0 Senior management occupations	590	620	0.8
A1 Specialist managers	1,260	1,340	1.2
A2 Managers in retail trade food and accommodation services	2,730	2,880	1.1
A3 Other managers n.e.c.	2,700	2,740	0.3
B0 Professional occupations in business and finance	1,260	1,330	1.1
B1 Finance and insurance administration occupations	1,470	1,540	1.0
B2 Secretaries	1,430	1,480	0.6
B3 Administrative and regulatory occupations	1,510	1,570	0.8
B4 Clerical supervisors	310	330	1.0
B5 Clerical occupations	6,370	6,690	1.0
C0 Professional occupations in natural and applied sciences	1,480	1,570	1.3
C1 Technical occupations related to natural and applied sciences	2,530	2,670	1.1
D0 Professional occupations in health	760	820	1.6
D1 Nurse supervisors and registered nurses	1,370	1,490	1.6
D2 Technical and related occupations in health	1,170	1,260	1.6
D3 Assisting occupations in support of health services	1,410	1,530	1.6
E0 Judges, lawyers, psychologists, social workers, ministers of religion & policy/program officers	1,460	1,530	0.9
E1 Teachers and professors	3,130	3,020	-0.7
E2 Paralegals, social services workers & occup. in educ. & religion n.e.c.	2,010	2,130	1.2
F0 Professional occupations in art and culture	720	740	0.6
F1 Technical occupations in art, culture, recreation and sport	1,330	1,380	0.8
G0 Sales and service supervisors	640	680	1.1
G1 Wholesale, technical, insurance, real estate sales specialists & retail, wholesale and grain buyers	1,270	1,360	1.4
G2 Retail salespersons and sales clerks	3,550	3,710	0.9
G3 Cashiers	1,600	1,680	1.0
G4 Chefs and cooks	1,370	1,460	1.4
G5 Occupations in food and beverage service	1,330	1,430	1.4
G6 Occupations in protective services	1,100	1,120	0.3
G7 Occup. in travel & accommodation incl. attendants in recreation & sport	810	860	1.1
G8 Childcare and home support workers	1,730	1,770	0.4
G9 Sales and service occupations n.e.c.	6,960	7,310	1.0
H0 Contractors and supervisors in trades and transportation	800	780	-0.5
H1 Construction trades	3,320	3,080	-1.4
H2 Stationary engineers, power stn operators & electrical trades & telecom.	1,190	1,180	-0.1
H3 Machinists, metal forming, shaping and erecting occupations	870	900	0.8
H4 Mechanics	2,690	2,840	1.1
H5 Other trades n.e.c.	750	770	0.5
H6 Heavy equipment and crane operators including drillers	1,270	1,250	-0.4
H7 Transport equipment operators & related workers, excl. labourers	4,150	4,400	1.2
H8 Trades helpers, construction and transport labourers & related	3,040	3,100	0.4
I0 Occupations unique to agriculture, excluding labourers	1,460	1,510	0.8

Cariboo Development Region

Projected Annual Growth Rates in Occupational Demand

	Estimated Employment		Avg Annual % Chng Over 5 Years
	<u>2008</u>	<u>2013</u>	<u>2008 to 2013</u>
I1 Occup. unique to forestry ops, mining, oil & gas extraction, fishing excl. labourers	1,720	1,920	2.4
I2 Primary production labourers	1,710	1,840	1.5
J0 Supervisors in manufacturing	500	550	2.0
J1 Machine operators in manufacturing	2,590	2,840	1.9
J2 Assemblers in manufacturing	580	640	2.2
J3 Labourers in processing, manufacturing and utilities	2,060	2,290	2.2

Appendix 1

Summary of Methodology for the British Columbia Regional Employment Projection Model (REPM)

Summary of Methodology for the British Columbia Regional Employment Projection Model (REPM)

Overview

The methodology used in the model is based on previous work on community dependencies carried out by BC Stats. The fundamental premise is that the economy of a region can be represented by income flows that can be classified as “basic” (or driver) and “non-basic” (or induced) depending on the source of the income. Basic income is the result of employment income generated from “basic jobs” plus investment income.

Included among basic jobs are those that are financed from resources emanating from outside the region. These jobs are labelled as “direct jobs” and are found in industries that export their product internationally, nationally or to other regions within B.C. Typically, export industries are in the goods producing sector, e.g., the primary and manufacturing industries. However, with globalization, certain industries in the service producing sector are increasingly exporting their products; examples of this would be port facilities (categorized in the Water Transport industry), the Financial and Insurance industries, and High Technology Business Service industries (such as Engineering), etc. As well, the metropolitan regions provide retail and wholesale trade services to the outlying regions of B.C. and many local economies provide tourism services such as accommodation, food, and recreation services to residents from other regions (both inside and outside the province).

Another less obvious component of direct jobs are those in the public sector. Education, health and government jobs are generated through tax revenues from the Federal or Provincial governments so those industries rely on general tax revenues coming from outside the region¹.

The other component of basic jobs is classified as “indirect jobs”. The model calculates indirect employment effects from employment changes in direct jobs. For example, when direct jobs are created in a local sawmill, indirect jobs will be created in the “upstream” industries that supply goods and services that go into the production of lumber such as the logging industry, the equipment manufacturing industry, etc., and in the “downstream” industries that get the lumber to market such as the transportation industry, and the wholesale trade industry, etc. The model calculates these indirect jobs using multipliers based on inter-industry linkages from the British Columbia Input-Output Model. The sum of the direct jobs and the indirect jobs are labelled basic jobs. The wages and salaries earned from these basic jobs are the major component of basic income.

The other component of basic income is principally investment income and transfer payments which are assumed to come from outside the local community. Private pensions comprise a large percent of investment income, while Canada Pension Plan and Old Age Security payments form a large percent of transfer payments. Therefore, the growth in the senior population is used as an indicator of changes in this non-salary/non-wage component of basic income.

¹ For the purpose of the model, tax payments are treated as an income flow-out of the regional economy and are deducted from total income so are not connected with any particular industry.

Up to this point, the model has calculated the number of basic jobs by industry and the total basic income of the local region. The next step is to calculate the number of jobs created as a result of the expenditure of this basic income by the local population on household goods and services such as retail trades, restaurants, transportation, residential construction, etc. These induced jobs are called “non-basic jobs” and are calculated using a multiplier based on an income to non-basic jobs ratio derived from the British Columbia Input-Output Model. The final result is a count of the number of non-basic jobs by industry which is then added to the basic jobs to derive total jobs by industry by region.

The final component of the model is to convert the industry employment levels into occupation employment levels. To this end, fixed occupation-to-industry ratios, based on the 2006 Census of Canada data, are applied. Three different ratio structures are used: one for the Vancouver Census Metropolitan Area, one for the Victoria Census Metropolitan Area, and one for the “Rest of Province”.

Data Sources

The current version of the model is benchmarked to the 2006 Census employment by Regional District (RD), and estimates are projected forward to the most up-to-date annual employment data from the Labour Force Survey (LFS). The growth rates for the direct industries from the LFS at the provincial level are used to project growth down to the RD level and then the sub-provincial growth rates are refined using standard variables that indicate differential growth between the regions. The population estimates and projections produced by BC Stats are an important data source for this purpose. For example, the employment growth in the education sector is largely dictated by the projected K-12 and post-secondary population growth in the relevant age groups. Government Services industry grows in line with the total population growth as does the social assistance industry. Employment in the health sector is primarily governed by the growth in the total population and, in particular, by the growth in the seniors’ population. The industries that have components in the tourism sector are differentiated according to the sub-provincial growth rates in tax revenues derived from room rentals. A further important determining factor of sub-region direct employment growth in the private sector is the major projects underway in the timeframe.

The output from the model is benchmarked to the LFS industry employment numbers at the B.C. level, as well as to the LFS regional employment numbers for the Development Regions and the Victoria and Vancouver Census Metropolitan Areas.

Once the model is updated to the most current employment levels, then the forecast is produced for five years out. The industrial employment projections from the Canadian Occupational Projection System (COPS) are now used as the source data for the industrial growth, benchmarked to the British Columbia Ministry of Finance’s employment growth rate projections for the goods producing sector and the service producing sector. These growth rates are used in determining both the growth rates in the direct employment and as a benchmark to reconcile the industrial employment generated by the model. The allocation of the provincial growth pattern forecast among the regions is done the same way as the estimates. Population forecasts by Regional District and the information on planned capital projects from the BC Major Projects Inventory are used as the drivers. The one exception is there are no forecasts available

for Room Tax Revenue so, for the tourism industries, the new completed major projects in the food and accommodation sector are integrated into the model.

Currently, there is a demand for economic forecasts by occupation at the Development Region level. Development Regions are aggregations of sub-sets of Regional Districts. Occupational forecasts are produced at the Development Region and the provincial level only. The accompanying appendices contain a conversion table which outlines which Regional District belongs to which College Region.

Updating

The intent is to update the Regional Employment Projection Model annually, based on another year of LFS data plus a new COPS forecast. The multiplier coefficients used to calculate indirect employment, non-basic employment, and occupational employment are to be updated every five years when regional updated Census data becomes available. At that time, the Regional District employment data by industry will also be re-benchmarked.

The model is only as good as the input data assumptions. Reliance on good quality data from COPS is very important. Users of the data who perceive any problems with the assumptions in the model or question the quality of any of the data series we are using, should contact Cathy Stock, Director, Labour and Social Statistics, at (250) 953-3703 or Cathy.Stock@gov.bc.ca.

July 2009

Appendix 2

REPM INDUSTRY

COPS INDUSTRY

ACC&FD	31 Accommodation and food services
AGRIC	1 Agriculture
BEVMFG	9 Food and Beverage Products
BUS_HI	25 Computer System Design Services
BUS_HI	24 Professional Business Services
BUS_HI	26 Other Professional Services
BUS_LO	27 Management, Administrative and Other Support
BUS_LO	24 Professional Business Services
BUS_LO	26 Other Professional Services
COMMUNICA	30 Information, culture and recreation
CONSTRUCT	8 Construction
EDUCATION	28 Educational Services
FIRE	23 Finance, Insurance, Real Estate and Leasing
FISHING	3 Fishing, Hunting and Trapping
FISHMFG	9 Food and Beverage Products
FOODMFG	9 Food and Beverage Products
FORESTLOG	2 Forestry and Logging with support activities
GOVT	33 Public administration
HEALTH	29 Health Care and Social Assistance
MINING	5 Mining (except Oil and Gas)
MINING	6 Support Activities for Mining and Oil & Gas Extraction
MINMFG	14 Manufactured Mineral Products
OTHMFG	12 Printing and Related Support Activities
OTHMFG	13 Rubber, Plastics and Chemicals
OTHMFG	14 Manufactured Mineral Products
OTHMFG	15 Metal Fabrication and Machinery (excluding electrical)
OTHMFG	16 Computer, Electronic and Electrical Products
OTHMFG	17 Transportation Equipment Manufacturing
OTHMFG	18 Other Manufacturing
OTHSERV	29 Health Care and Social Assistance
OTHSERV	32 Other services
PAPERPULP	11 Paper Manufacturing
PETROL	4 Oil and Gas Extraction
PETROL	6 Support Activities for Mining and Oil and Gas Extraction
PETROLMFG	19 Other Manufacturing
RETAIL	21 Retail Trade
TRANOTHER	22 Transportation and Warehousing
TRANRAIL	22 Transportation and Warehousing
TRANTRUCK	22 Transportation and Warehousing
TRANWATER	22 Transportation and Warehousing
UTILITIES	7 Utilities
WDOTHER	10 Wood Product Manufacturing
WDSAWMILLS	10 Wood Product Manufacturing
WHOLESALE	20 Wholesale Trade

Appendix 3

Regional District to Development Region Conversion for REPM

DR name	DR #	RD Name	RD #
Vancouver Island/Coast	1	Capital	17
Vancouver Island/Coast	1	Cowichan Valley	19
Vancouver Island/Coast	1	Nanaimo	21
Vancouver Island/Coast	1	Alberni-Clayoquot	23
Vancouver Island/Coast	1	Comox-Strathcona	25
Vancouver Island/Coast	1	Powell River	27
Vancouver Island/Coast	1	Mount Waddington	43
Vancouver Island/Coast	1	Central Coast	45
Mainland/Southwest	2	Fraser Valley	9
Mainland/Southwest	2	Greater Vancouver	15
Mainland/Southwest	2	Sunshine Coast	29
Mainland/Southwest	2	Squamish-Lillooet	31
Thompson-Okanagan	3	Okanagan-Similkameen	7
Thompson-Okanagan	3	Thompson-Nicola	33
Thompson-Okanagan	3	Central Okanagan	35
Thompson-Okanagan	3	North Okanagan	37
Thompson-Okanagan	3	Columbia-Shuswap	39
Kootenay	4	East Kootenay	1
Kootenay	4	Central Kootenay	3
Kootenay	4	Kootenay-Boundary	5
Cariboo	5	Cariboo	41
Cariboo	5	Fraser-Fort George	53
North Coast	6	Skeena- Queen Charlotte	47
North Coast	6	Kitimat-Stikine	49
Nechako	7	Bulkley-Nechako	51
Nechako	7	Stikine	57
Northeast	8	Peace River	55
Northeast	8	Northern Rockies	57

Appendix 4

Projected Annual Growth Rates in Occupational Demand (3-digit)

Cariboo Development Region

Projected Annual Growth Rates in Occupational Demand

	Estimated Employment		Avg Annual % Chng Over 5 Years
	<u>2008</u>	<u>2013</u>	<u>2008 to 2013</u>
All occupations	86,070	89,930	0.9
A01 Legislators and senior management	600	620	0.8
A11 Administrative services managers	470	490	0.9
A12 Managers in engineering, architecture, science and information systems	110	120	1.1
A13 Sales, marketing and advertising managers	480	510	1.6
A14 Facility operation and maintenance managers	210	220	1.0
A21 Managers in retail trade	1,870	1,960	0.9
A22 Managers in food service and accommodation	860	920	1.4
A30 Managers in financial and business services	520	550	1.1
A31 Managers in communication (except broadcasting)	40	40	1.2
A32 Managers in health, education, social and community services	450	450	0.1
A33 Managers in public administration	40	50	0.3
A34 Managers in art, culture, recreation and sport	110	120	0.9
A35 Managers in protective service	90	90	0.0
A36 Managers in other services	160	170	0.7
A37 Managers in construction and transportation	750	700	-1.2
A38 Managers in primary production (except agriculture)	200	220	1.7
A39 Managers in manufacturing and utilities	330	350	1.4
B01 Auditors, accountants and investment professionals	970	1,020	1.1
B02 Human resources and business service professionals	290	310	1.2
B11 Finance and insurance administrative occupations	1,470	1,540	1.0
B21 Secretaries, recorders and transcriptionists	1,440	1,480	0.6
B31 Administrative and regulatory occupations	1,510	1,570	0.7
B41 Clerical supervisors	320	330	1.0
B51 Clerical occupations, general office skills	2,190	2,290	1.0
B52 Office equipment operators	180	190	0.9
B53 Finance and insurance clerks	1,190	1,250	1.1
B54 Administrative support clerks	440	460	0.9
B55 Library, correspondence and related information clerks	850	890	0.8
B56 Mail and message distribution occupations	550	580	1.1
B57 Recording, scheduling and distributing occupations	970	1,030	1.2
C01 Physical science professionals	80	80	0.8
C02 Life science professionals	440	480	1.9
C03 Civil, mechanical, electrical and chemical engineers	330	350	0.8
C04 Other engineers	130	140	0.8
C05 Architects, urban planners and land surveyors	160	160	0.7
C06 Mathematicians, statisticians and actuaries	0	0	1.9
C07 Computer and information systems professionals	340	360	1.4
C11 Technical occupations in physical sciences	160	170	0.5
C12 Technical occupations in life sciences	610	670	1.8
C13 Technical occupations in civil, mechanical and industrial engineering	170	170	0.4
C14 Technical occupations in electronics and electrical engineering	410	430	0.8
C15 Technical occupations in architecture, drafting, surveying and mapping	270	290	1.3
C16 Other technical inspectors and regulatory officers	240	240	0.5
C17 Transportation officers and controllers	380	410	1.2
C18 Technical occupations in computer and information systems	280	300	1.2
D01 Physicians, dentists and veterinarians	400	440	1.7

Cariboo Development Region

Projected Annual Growth Rates in Occupational Demand

	Estimated Employment		Avg Annual % Chng Over 5 Years
	<u>2008</u>	<u>2013</u>	<u>2008 to 2013</u>
D02 Optometrists, chiropractors and other health diagnosing and treating professionals	50	60	1.7
D03 Pharmacists, dietitians and nutritionists	120	130	1.2
D04 Therapy and assessment professionals	170	190	1.5
D11 Nurse supervisors and registered nurses	1,380	1,490	1.6
D21 Medical technologists and technicians (except dental health)	390	420	1.7
D22 Technical occupations in dental health care	100	110	1.6
D23 Other technical occupations in health care (except dental)	680	730	1.5
D31 Assisting occupations in support of health services	1,410	1,530	1.6
E01 Judges, lawyers and Quebec notaries	200	210	1.1
E02 Psychologists, social workers, counsellors, clergy and probation officers	720	750	1.0
E03 Policy and program officers, researchers and consultants	540	560	0.7
E11 University professors and assistants	280	270	-0.7
E12 College and other vocational instructors	470	460	-0.3
E13 Secondary and elementary school teachers and educational counsellors	2,390	2,300	-0.7
E21 Paralegals, social services workers and occupations in education and religion, n.e.c.	2,010	2,130	1.2
F01 Librarians, archivists, conservators and curators	60	60	1.0
F02 Writing, translating and public relations professionals	270	290	0.9
F03 Creative and performing artists	390	400	0.3
F11 Technical occupations in libraries, archives, museums and art galleries	90	100	0.5
F12 Photographers, graphic arts technicians and technical and co-ordinating occupations in motion pictures, broadcasting and the performing arts	170	180	1.3
F13 Announcers and other performers	50	50	1.1
F14 Creative designers and craftspersons	430	450	0.9
F15 Athletes, coaches, referees and related occupations	580	600	0.7
G01 Sales and service supervisors	640	670	1.1
G11 Sales representatives, wholesale trade	590	630	1.5
G12 Technical sales specialists, wholesale trade	170	190	1.7
G13 Insurance and real estate sales occupations and buyers	510	540	1.1
G21 Retail salespersons and sales clerks	3,550	3,710	0.9
G31 Cashiers	1,600	1,680	1.0
G41 Chefs and cooks	1,370	1,460	1.4
G51 Occupations in food and beverage service	1,330	1,430	1.4
G61 Police officers and firefighters	410	410	0.0
G62 Other occupations in protective service	380	380	0.1
G63 Security guards and related occupations	310	320	1.0
G71 Occupations in travel and accommodation	400	420	1.2
G72 Tour and recreational guides and casino occupations	200	210	1.1
G73 Other occupations in travel, accommodation, amusement and recreation	210	220	1.1
G81 Child care and home support workers	1,730	1,770	0.4
G91 Technical occupations in personal service	410	420	0.7
G92 Other occupations in personal service	280	290	0.8
G93 Cleaners	2,860	2,990	0.9
G94 Butchers and bakers, retail and wholesale	300	320	1.0
G96 Food counter attendants, kitchen helpers and related occupations	1,740	1,860	1.4
G97 Other sales and related occupations	1,160	1,220	0.9
G98 Other elemental service occupations	200	210	1.0

Cariboo Development Region

Projected Annual Growth Rates in Occupational Demand

	Estimated Employment		Avg Annual % Chng Over 5 Years
	<u>2008</u>	<u>2013</u>	<u>2008 to 2013</u>
H01 Contractors and supervisors, trades and related workers	740	720	-0.6
H02 Supervisors, railway and motor transportation occupations	60	70	1.0
H11 Plumbers, pipefitters and gas fitters	500	470	-1.0
H12 Carpenters and cabinetmakers	1,560	1,460	-1.4
H13 Masonry and plastering trades	480	440	-1.8
H14 Other construction trades	770	710	-1.5
H21 Electrical trades and telecommunications occupations	1,000	980	-0.3
H22 Stationary engineers and power station and system operators	190	200	1.0
H31 Machinists and related occupations	140	150	1.8
H32 Metal forming, shaping and erecting trades	730	750	0.6
H41 Machinery and transportation equipment mechanics (except motor vehicle)	1,680	1,780	1.3
H42 Automotive service technicians	870	900	0.8
H43 Other mechanics	140	150	0.8
H51 Upholsterers, tailors, shoe repairers, jewellers and related occupations	100	100	0.8
H52 Printing press operators, commercial divers and other trades and related occupations, n.e.c.	240	250	1.4
H53 Other installers, repairers and servicers	420	420	-0.1
H61 Heavy equipment operators	1,140	1,110	-0.5
H62 Crane operators, drillers and blasters	140	140	0.0
H71 Motor vehicle and transit drivers	3,710	3,930	1.2
H72 Train crew operating occupations	170	180	1.2
H73 Other transport equipment operators and related workers	280	290	1.2
H81 Longshore workers and material handlers	1,470	1,610	1.9
H82 Trades helpers and labourers	1,380	1,300	-1.2
H83 Public works and other labourers, n.e.c.	190	200	0.6
I01 Contractors, operators and supervisors in agriculture, horticulture and aquaculture	800	830	0.7
I02 Agriculture and horticulture workers	650	680	0.8
I11 Supervisors, logging and forestry	180	210	3.3
I12 Supervisors, mining, oil and gas	110	110	-0.9
I13 Underground miners, oil and gas drillers and related workers	140	140	-0.5
I14 Mine service workers and operators in oil and gas drilling	80	80	0.4
I15 Logging machinery operators	640	740	3.3
I16 Logging and forestry workers	540	620	2.9
I17 Fishing vessel masters and skippers and fishermen/women	20	20	0.3
I18 Other fishing and trapping occupations	10	10	1.2
I21 Primary production labourers	1,710	1,840	1.5
J01 Supervisors, processing occupations	460	510	2.0
J02 Supervisors, assembly and fabrication	40	40	2.2
J11 Central control and process operators in manufacturing and processing	260	270	0.7
J12 Machine operators and related workers in metal and mineral products processing	80	80	1.0
J13 Machine operators and related workers in chemical, plastic and rubber processing	80	80	1.0
J14 Machine operators and related workers in pulp and paper production and wood processing	1,660	1,860	2.4

Cariboo Development Region

Projected Annual Growth Rates in Occupational Demand

	Estimated Employment		Avg Annual % Chng Over 5 Years
	<u>2008</u>	<u>2013</u>	<u>2008 to 2013</u>
J15 Machine operators and related workers in textile processing	20	20	0.9
J16 Machine operators and related workers in fabric, fur and leather products manufacturing	40	40	0.9
J17 Machine operators and related workers in food, beverage and tobacco processing	110	110	1.1
J18 Printing machine operators and related occupations	110	100	-0.7
J19 Machining, metalworking, woodworking and related machine operators	240	270	2.3
J21 Mechanical, electrical and electronics assemblers	60	60	1.6
J22 Other assembly and related occupations	520	570	2.2
J31 Labourers in processing, manufacturing and utilities	2,060	2,290	2.2

Appendix 5

Projected Annual Growth Rates in Occupational Demand (4-digit)

Cariboo Development Region

Projected Annual Growth Rates in Occupational Demand

	Estimated Employment		Avg Annual % Chng Over 5 Years
	2008	2013	2008 to 2013
All occupations	86,070	89,930	0.9
A Management occupations	7,290	7,580	0.8
A0 Senior management occupations	590	620	0.8
A01 Legislators and senior management	600	620	0.8
A011 Legislators	60	60	-0.1
A012 Senior government managers and officials	70	70	0.0
A013 Senior managers - Financial, communications and other business services	100	110	1.4
A014 Senior managers - Health, education, social and community services and membership organizations	80	80	0.8
A015 Senior managers - Trade, broadcasting and other services, n.e.c.	100	110	1.3
A016 Senior managers - Goods production, utilities, transportation and construction	170	180	0.8
A1 Specialist managers	1,260	1,340	1.2
A11 Administrative services managers	470	490	0.9
A111 Financial managers	190	200	1.0
A112 Human resources managers	100	100	1.0
A113 Purchasing managers	30	30	0.9
A114 Other administrative services managers	150	160	0.8
A12 Managers in engineering, architecture, science and information systems	110	120	1.1
A121 Engineering managers	40	40	0.9
A122 Computer and information systems managers	60	60	1.2
A123 Architecture and science managers	10	10	1.0
A13 Sales, marketing and advertising managers	480	510	1.6
A131 Sales, marketing and advertising managers	480	510	1.6
A14 Facility operation and maintenance managers	210	220	1.0
A141 Facility operation and maintenance managers	210	220	1.0
A2 Managers in retail trade, food and accommodation services	2,730	2,880	1.1
A21 Managers in retail trade	1,870	1,960	0.9
A211 Retail trade managers	1,870	1,960	0.9
A22 Managers in food service and accommodation	860	920	1.4
A221 Restaurant and food service managers	510	550	1.4
A222 Accommodation service managers	340	370	1.4
A3 Other managers, n.e.c.	2,700	2,740	0.3
A30 Managers in financial and business services	520	550	1.1
A301 Insurance, real estate and financial brokerage managers	300	310	1.0
A302 Banking, credit and other investment managers	200	210	1.1
A303 Other business services managers	20	20	1.1
A31 Managers in communication (except broadcasting)	40	40	1.2
A311 Telecommunication carriers managers	10	10	1.3
A312 Postal and courier services managers	30	30	1.2
A32 Managers in health, education, social and community services	450	450	0.1
A321 Managers in health care	80	90	1.6
A322 Administrators - Post-secondary education and vocational training	50	50	-0.7
A323 School principals and administrators of elementary and secondary education	220	220	-0.7
A324 Managers in social, community and correctional services	90	90	1.2
A33 Managers in public administration	40	50	0.3

Cariboo Development Region

Projected Annual Growth Rates in Occupational Demand

	Estimated Employment		Avg Annual % Chng Over 5 Years
	2008	2013	2008 to 2013
A331 Government managers - Health and social policy development and program administration	10	10	0.7
A332 Government managers - Economic analysis, policy development and program administration	20	20	0.2
A333 Government managers - Education policy development and program administration	-	-	-
A334 Other managers in public administration	10	10	0.2
A34 Managers in art, culture, recreation and sport	110	120	0.9
A341 Library, archive, museum and art gallery managers	20	20	0.9
A342 Managers - Publishing, motion pictures, broadcasting and performing arts	30	30	1.1
A343 Recreation, sports and fitness program and service directors	60	60	0.9
A35 Managers in protective service	90	90	0.0
A351 Commissioned police officers	-	-	-
A352 Fire chiefs and senior firefighting officers	20	20	0.1
A353 Commissioned officers, armed forces	60	60	0.0
A36 Managers in other services	160	170	0.7
A361 Other services managers	170	170	0.7
A37 Managers in construction and transportation	750	700	-1.2
A371 Construction managers	400	370	-1.6
A372 Residential home builders and renovators	220	200	-1.7
A373 Transportation managers	120	130	1.2
A38 Managers in primary production (except agriculture)	200	220	1.7
A381 Primary production managers (except agriculture)	200	220	1.7
A39 Managers in manufacturing and utilities	330	350	1.4
A391 Manufacturing managers	290	310	1.6
A392 Utilities managers	50	50	0.5
B Business, finance and administrative occupations	12,370	12,950	0.9
B0 Professional occupations in business and finance	1,260	1,330	1.1
B01 Auditors, accountants and investment professionals	970	1,020	1.1
B011 Financial auditors and accountants	640	680	1.1
B012 Financial and investment analysts	50	60	1.1
B013 Securities agents, investment dealers and brokers	60	60	1.0
B014 Other financial officers	220	230	1.1
B02 Human resources and business service professionals	290	310	1.2
B021 Specialists in human resources	120	130	0.9
B022 Professional occupations in business services to management	170	180	1.5
B1 Finance and insurance administration occupations	1,470	1540	1.0
B11 Finance and insurance administrative occupations	1,470	1540	1.0
B111 Bookkeepers	1,170	1230	1.0
B112 Loan officers	130	130	1.1
B113 Insurance adjusters and claims examiners	80	80	1.0
B114 Insurance underwriters	20	20	1.1
B115 Assessors, valuers and appraisers	60	70	0.7
B116 Customs, ship and other brokers	10	10	1.2
B2 Secretaries	1,430	1480	0.6
B21 Secretaries, recorders and transcriptionists	1,440	1480	0.6
B211 Secretaries (except legal and medical)	1,200	1220	0.4

Cariboo Development Region

Projected Annual Growth Rates in Occupational Demand

	Estimated Employment		Avg Annual % Chng Over 5 Years
	2008	2013	2008 to 2013
B212 Legal secretaries	150	160	1.1
B213 Medical secretaries	30	40	1.6
B214 Court recorders and medical transcriptionists	60	60	1.2
B3 Administrative and regulatory occupations	1,510	1570	0.8
B31 Administrative and regulatory occupations	1,510	1570	0.7
B311 Administrative officers	910	950	0.8
B312 Executive assistants	80	80	0.4
B313 Personnel and recruitment officers	40	40	0.4
B314 Property administrators	230	240	0.9
B315 Purchasing agents and officers	110	120	0.9
B316 Conference and event planners	40	40	0.9
B317 Court officers and justices of the peace	10	10	0.0
B318 Immigration, employment insurance and revenue officers	90	90	0.0
B4 Clerical supervisors	310	330	1.0
B41 Clerical supervisors	320	330	1.0
B411 Supervisors, general office and administrative support clerks	50	50	0.9
B412 Supervisors, finance and insurance clerks	70	70	0.9
B413 Supervisors, library, correspondence and related information clerks	70	70	0.8
B414 Supervisors, mail and message distribution occupations	60	60	1.2
B415 Supervisors, recording, distributing and scheduling occupations	80	80	1.2
B5 Clerical occupations	6,370	6690	1.0
B51 Clerical occupations, general office skills	2,190	2290	1.0
B511 General office clerks	1,160	1210	0.7
B513 Records management and filing clerks	100	110	1.0
B514 Receptionists and switchboard operators	920	980	1.3
B52 Office equipment operators	180	190	0.9
B522 Data entry clerks	130	130	1.0
B523 Desktop publishing operators and related occupations	10	10	-0.3
B524 Telephone operators	40	40	1.0
B53 Finance and insurance clerks	1,190	1250	1.1
B531 Accounting and related clerks	530	550	1.0
B532 Payroll clerks	140	150	1.1
B533 Customer service representatives - Financial services	420	440	1.1
B534 Banking, insurance and other financial clerks	90	100	1.1
B535 Collectors	10	20	0.8
B54 Administrative support clerks	440	460	0.9
B541 Administrative clerks	380	400	0.9
B542 Personnel clerks	40	40	0.8
B543 Court clerks	20	20	0.0
B55 Library, correspondence and related information clerks	850	890	0.8
B551 Library clerks	60	60	0.8
B552 Correspondence, publication and related clerks	10	10	0.8
B553 Customer service, information and related clerks	610	640	0.9
B554 Survey interviewers and statistical clerks	180	180	0.4
B56 Mail and message distribution occupations	550	580	1.1
B561 Mail, postal and related clerks	160	170	1.2
B562 Letter carriers	170	180	1.2

Cariboo Development Region

Projected Annual Growth Rates in Occupational Demand

	Estimated Employment		Avg Annual % Chng Over 5 Years
	2008	2013	2008 to 2013
B563 Couriers, messengers and door-to-door distributors	220	230	1.0
B57 Recording, scheduling and distributing occupations	970	1030	1.2
B571 Shippers and receivers	370	390	1.5
B572 Storekeepers and parts clerks	210	220	1.2
B573 Production clerks	50	60	1.2
B574 Purchasing and inventory clerks	160	170	1.3
B575 Dispatchers and radio operators	160	170	0.8
B576 Transportation route and crew schedulers	10	10	1.0
C Natural and applied sciences and related occupations	4,010	4240	1.2
C0 Professional occupations in natural and applied sciences	1,480	1570	1.3
C01 Physical science professionals	80	80	0.8
C011 Physicists and astronomers	-	-	-
C012 Chemists	10	10	1.2
C013 Geologists, geochemists and geophysicists	50	50	0.8
C014 Meteorologists	10	10	0.8
C015 Other professional occupations in physical sciences	10	10	0.0
C02 Life science professionals	440	480	1.9
C021 Biologists and related scientists	110	120	0.8
C022 Forestry professionals	300	340	2.5
C023 Agricultural representatives, consultants and specialists	20	20	0.8
C03 Civil, mechanical, electrical and chemical engineers	330	350	0.8
C031 Civil engineers	170	180	0.6
C032 Mechanical engineers	80	90	1.1
C033 Electrical and electronics engineers	40	40	0.9
C034 Chemical engineers	30	30	0.7
C04 Other engineers	130	140	0.8
C041 Industrial and manufacturing engineers	30	30	1.1
C042 Metallurgical and materials engineers	-	-	-
C043 Mining engineers	30	20	-0.6
C044 Geological engineers	20	20	1.1
C045 Petroleum engineers	10	20	0.9
C046 Aerospace engineers	-	-	-
C047 Computer engineers (except software engineers)	30	30	1.3
C048 Other professional engineers, n.e.c.	10	10	0.9
C05 Architects, urban planners and land surveyors	160	160	0.7
C051 Architects	30	40	0.7
C052 Landscape architects	10	10	1.0
C053 Urban and land use planners	40	40	0.4
C054 Land surveyors	70	80	0.9
C06 Mathematicians, statisticians and actuaries	-	-	-
C061 Mathematicians, statisticians and actuaries	-	-	-
C07 Computer and information systems professionals	340	360	1.4
C071 Information systems analysts and consultants	140	140	1.3
C072 Database analysts and data administrators	20	20	1.3
C073 Software engineers and designers	20	20	1.6
C074 Computer programmers and interactive media developers	100	110	1.5
C075 Web designers and developers	60	70	1.7

Cariboo Development Region

Projected Annual Growth Rates in Occupational Demand

	Estimated Employment		Avg Annual % Chng Over 5 Years
	2008	2013	2008 to 2013
C1 Technical occupations related to natural and applied sciences	2,530	2,670	1.1
C11 Technical occupations in physical sciences	160	170	0.5
C111 Chemical technologists and technicians	90	90	0.7
C112 Geological and mineral technologists and technicians	70	70	0.2
C113 Meteorological technicians	10	10	1.0
C12 Technical occupations in life sciences	610	670	1.8
C121 Biological technologists and technicians	80	80	0.9
C122 Agricultural and fish products inspectors	10	10	0.4
C123 Forestry technologists and technicians	370	420	2.4
C124 Conservation and fishery officers	60	60	0.3
C125 Landscape and horticultural technicians and specialists	80	80	0.9
C13 Technical occupations in civil, mechanical and industrial engineering	170	170	0.4
C131 Civil engineering technologists and technicians	50	60	0.9
C132 Mechanical engineering technologists and technicians	40	40	0.9
C133 Industrial engineering and manufacturing technologists and technicians	30	30	1.4
C134 Construction estimators	50	50	-0.9
C14 Technical occupations in electronics and electrical engineering	410	430	0.8
C141 Electrical and electronics engineering technologists and technicians	70	70	0.6
C142 Electronic service technicians (household and business equipment)	240	250	0.9
C143 Industrial instrument technicians and mechanics	80	80	0.9
C144 Aircraft instrument, electrical and avionics mechanics, technicians and inspectors	30	30	0.9
C15 Technical occupations in architecture, drafting, surveying and mapping	270	290	1.3
C151 Architectural technologists and technicians	20	20	0.9
C152 Industrial designers	20	20	1.3
C153 Drafting technologists and technicians	140	140	1.2
C154 Land survey technologists and technicians	20	20	0.8
C155 Mapping and related technologists and technicians	80	80	1.9
C16 Other technical inspectors and regulatory officers	240	240	0.5
C161 Non-destructive testers and inspectors	20	30	1.1
C162 Engineering inspectors and regulatory officers	10	10	0.6
C163 Inspectors in public and environmental health and occupational health and safety	110	120	0.9
C164 Construction inspectors	90	90	0.0
C17 Transportation officers and controllers	380	410	1.2
C171 Air pilots, flight engineers and flying instructors	190	200	1.2
C172 Air traffic control and related occupations	40	40	1.2
C173 Deck officers, water transport	110	120	1.2
C174 Engineer officers, water transport	40	50	1.1
C175 Railway traffic controllers and marine traffic regulators	-	-	-
C18 Technical occupations in computer and information systems	280	300	1.2
C181 Computer network technicians	110	110	1.0
C182 User support technicians	170	180	1.2
C183 Systems testing technicians	10	10	1.9
D Health occupations	4,710	5,090	1.6
D0 Professional occupations in health	760	820	1.6
D01 Physicians, dentists and veterinarians	400	440	1.7

Cariboo Development Region

Projected Annual Growth Rates in Occupational Demand

	Estimated Employment		Avg Annual % Chng Over 5 Years
	2008	2013	2008 to 2013
D011 Specialist physicians	100	110	1.7
D012 General practitioners and family physicians	180	200	1.7
D013 Dentists	80	80	1.7
D014 Veterinarians	40	50	1.9
D02 Optometrists, chiropractors and other health diagnosing and treating professionals	50	60	1.7
D021 Optometrists	10	20	1.7
D022 Chiropractors	30	30	1.7
D023 Other professional occupations in health diagnosing and treating	10	10	1.7
D03 Pharmacists, dietitians and nutritionists	120	130	1.2
D031 Pharmacists	90	100	1.0
D032 Dietitians and nutritionists	30	30	1.6
D04 Therapy and assessment professionals	170	190	1.5
D041 Audiologists and speech-language pathologists	30	30	0.7
D042 Physiotherapists	70	80	1.7
D043 Occupational therapists	40	50	1.7
D044 Other professional occupations in therapy and assessment	20	30	1.5
D1 Nurse supervisors and registered nurses	1,370	1,490	1.6
D11 Nurse supervisors and registered nurses	1,380	1,490	1.6
D111 Head nurses and supervisors	40	40	1.6
D112 Registered nurses	1,340	1,450	1.6
D2 Technical and related occupations in health	1,170	1,260	1.6
D21 Medical technologists and technicians (except dental health)	390	420	1.7
D211 Medical laboratory technologists and pathologists' assistants	80	90	1.7
D212 Medical laboratory technicians	90	100	1.7
D213 Veterinary and animal health technologists and technicians	70	80	1.8
D214 Respiratory therapists, clinical perfusionists and cardio-pulmonary technologists	20	30	1.6
D215 Medical radiation technologists	80	90	1.7
D216 Medical sonographers	10	10	1.7
D217 Cardiology technologists	10	10	1.7
D218 Electroencephalographic and other diagnostic technologists, n.e.c.	-	-	-
D219 Other medical technologists and technicians (except dental health)	10	10	1.4
D22 Technical occupations in dental health care	100	110	1.6
D221 Denturists	10	10	1.4
D222 Dental hygienists and dental therapists	70	80	1.7
D223 Dental technologists, technicians and laboratory bench workers	20	20	1.4
D23 Other technical occupations in health care (except dental)	680	730	1.5
D231 Opticians	30	30	1.3
D232 Midwives and practitioners of natural healing	40	50	1.6
D233 Licensed practical nurses	230	240	1.7
D234 Ambulance attendants and other paramedical occupations	260	280	1.4
D235 Other technical occupations in therapy and assessment	120	130	1.2
D3 Assisting occupations in support of health services	1,410	1,530	1.6
D31 Assisting occupations in support of health services	1,410	1,530	1.6
D311 Dental assistants	230	250	1.7
D312 Nurse aides, orderlies and patient service associates	930	1,010	1.7
D313 Other assisting occupations in support of health services	250	270	1.3
E Occupations in social science, education, government service and religion	6,590	6,680	0.3

Cariboo Development Region

Projected Annual Growth Rates in Occupational Demand

	Estimated Employment		Avg Annual % Chng Over 5 Years
	2008	2013	2008 to 2013
E0 Judges, lawyers, psychologists, social workers, ministers of religion, and policy and program officers	1,460	1,530	0.9
E01 Judges, lawyers and Quebec notaries	200	210	1.1
E011 Judges	10	10	0.0
E012 Lawyers and Quebec notaries	190	200	1.2
E02 Psychologists, social workers, counsellors, clergy and probation officers	720	750	1.0
E021 Psychologists	50	50	0.9
E022 Social workers	250	260	1.1
E023 Family, marriage and other related counsellors	190	200	1.5
E024 Ministers of religion	190	190	0.7
E025 Probation and parole officers and related occupations	40	40	0.1
E03 Policy and program officers, researchers and consultants	540	560	0.7
E031 Natural and applied science policy researchers, consultants and program officers	60	60	1.0
E032 Economists and economic policy researchers and analysts	10	20	0.8
E033 Business development officers and marketing researchers and consultants	120	130	1.1
E034 Social policy researchers, consultants and program officers	70	70	0.7
E035 Education policy researchers, consultants and program officers	60	60	-0.5
E036 Recreation, sports and fitness program supervisors and consultants	80	80	0.9
E037 Program officers unique to government	40	40	0.0
E038 Other professional occupations in social science, n.e.c.	30	30	1.3
E039 Health policy researchers, consultants and program officers	70	70	1.2
E1 Teachers and professors	3,130	3,020	-0.7
E11 University professors and assistants	280	270	-0.7
E111 University professors	170	160	-0.7
E112 Post-secondary teaching and research assistants	110	110	-0.6
E12 College and other vocational instructors	470	460	-0.3
E121 College and other vocational instructors	470	460	-0.3
E13 Secondary and elementary school teachers and educational counsellors	2,390	2,300	-0.7
E131 Secondary school teachers	850	810	-0.7
E132 Elementary school and kindergarten teachers	1,420	1,370	-0.7
E133 Educational counsellors	120	110	-0.6
E2 Paralegals, social services workers and occupations in education and religion, n.e.c.	2,010	2,130	1.2
E21 Paralegals, social services workers and occupations in education and religion, n.e.c.	2,010	2,130	1.2
E211 Paralegal and related occupations	130	140	1.1
E212 Community and social service workers	740	790	1.3
E213 Employment counsellors	100	100	0.9
E214 Instructors and teachers of persons with disabilities	20	20	0.1
E215 Other instructors	120	120	-0.5
E216 Other religious occupations	40	40	0.7
E217 Early childhood educators and assistants	860	920	1.6
F Occupations in art, culture, recreation and sport	2,050	2,120	0.7
F0 Professional occupations in art and culture	720	740	0.6
F01 Librarians, archivists, conservators and curators	60	60	1.0
F011 Librarians	50	50	0.9
F012 Conservators and curators	10	10	1.1

Cariboo Development Region

Projected Annual Growth Rates in Occupational Demand

	Estimated Employment		Avg Annual % Chng Over 5 Years
	2008	2013	2008 to 2013
F013 Archivists	-	-	-
F02 Writing, translating and public relations professionals	270	290	0.9
F021 Authors and writers	100	100	1.0
F022 Editors	40	50	0.9
F023 Journalists	40	40	0.8
F024 Professional occupations in public relations and communications	70	80	1.0
F025 Translators, terminologists and interpreters	20	20	0.5
F03 Creative and performing artists	390	400	0.3
F031 Producers, directors, choreographers and related occupations	30	40	1.1
F032 Conductors, composers and arrangers	10	10	0.4
F033 Musicians and singers	160	160	-0.3
F034 Dancers	40	40	-0.7
F035 Actors and comedians	20	20	1.1
F036 Painters, sculptors and other visual artists	130	140	1.0
F1 Technical occupations in art, culture, recreation and sport	1,330	1,380	0.8
F11 Technical occupations in libraries, archives, museums and art galleries	90	100	0.5
F111 Library and archive technicians and assistants	70	70	0.2
F112 Technical occupations related to museums and art galleries	30	30	1.1
F12 Photographers, graphic arts technicians and technical and co-ordinating occupations in motion pictures, broadcasting and the performing arts	170	180	1.3
F121 Photographers	80	80	1.8
F122 Film and video camera operators	20	20	1.1
F123 Graphic arts technicians	10	10	0.8
F124 Broadcast technicians	10	10	0.8
F125 Audio and video recording technicians	20	20	0.7
F126 Other technical and co-ordinating occupations in motion pictures, broadcasting and the performing arts	20	20	1.0
F127 Support occupations in motion pictures, broadcasting and the performing arts	20	20	0.8
F13 Announcers and other performers	50	50	1.1
F131 Announcers and other broadcasters	40	40	1.1
F132 Other performers	10	10	1.3
F14 Creative designers and craftspersons	430	450	0.9
F141 Graphic designers and illustrators	170	170	0.4
F142 Interior designers	70	70	1.0
F143 Theatre, fashion, exhibit and other creative designers	30	30	1.1
F144 Artisans and craftspersons	180	190	1.2
F145 Patternmakers - Textile, leather and fur products	-	-	-
F15 Athletes, coaches, referees and related occupations	580	600	0.7
F151 Athletes	20	20	1.0
F152 Coaches	60	60	0.0
F153 Sports officials and referees	50	50	0.9
F154 Program leaders and instructors in recreation, sport and fitness	440	460	0.8
G Sales and service occupations	20,360	21,380	1.0
G0 Sales and service supervisors	640	680	1.1
G01 Sales and service supervisors	640	670	1.1
G011 Retail trade supervisors	320	340	1.0
G012 Food service supervisors	190	200	1.4

Cariboo Development Region

Projected Annual Growth Rates in Occupational Demand

	Estimated Employment		Avg Annual % Chng Over 5 Years
	2008	2013	2008 to 2013
G013 Executive housekeepers	40	40	1.3
G014 Dry cleaning and laundry supervisors	10	10	0.7
G015 Cleaning supervisors	40	40	0.7
G016 Other service supervisors	50	50	1.2
G1 Wholesale, technical, insurance, real estate sales specialists, and retail, wholesale and grain buyers	1,270	1,360	1.4
G11 Sales representatives, wholesale trade	590	630	1.5
G111 Sales representatives, wholesale trade (non-technical)	590	630	1.5
G12 Technical sales specialists, wholesale trade	170	190	1.7
G121 Technical sales specialists, wholesale trade	170	190	1.7
G13 Insurance and real estate sales occupations and buyers	510	540	1.1
G131 Insurance agents and brokers	220	230	1.1
G132 Real estate agents and salespersons	200	210	0.9
G133 Retail and wholesale buyers	90	90	1.4
G134 Grain elevator operators	-	-	-
G2 Retail salespersons and sales clerks	3,550	3,710	0.9
G21 Retail salespersons and sales clerks	3,550	3,710	0.9
G211 Retail salespersons and sales clerks	3,550	3,720	0.9
G3 Cashiers	1,600	1,680	1.0
G31 Cashiers	1,600	1,680	1.0
G311 Cashiers	1,600	1,680	1.0
G4 Chefs and cooks	1,370	1,460	1.4
G41 Chefs and cooks	1,370	1,460	1.4
G411 Chefs	200	220	1.4
G412 Cooks	1,160	1,250	1.4
G5 Occupations in food and beverage service	1,330	1,430	1.4
G51 Occupations in food and beverage service	1,330	1,430	1.4
G511 Maitres d'hôtel and hosts/hostesses	110	120	1.4
G512 Bartenders	200	210	1.4
G513 Food and beverage servers	1,020	1,100	1.4
G6 Occupations in protective services	1,100	1,120	0.3
G61 Police officers and firefighters	410	410	0.0
G611 Police officers (except commissioned)	290	290	0.0
G612 Firefighters	120	120	0.1
G62 Other occupations in protective service	380	380	0.1
G621 Sheriffs and bailiffs	30	30	0.5
G622 Correctional service officers	130	130	0.0
G623 By-law enforcement and other regulatory officers, n.e.c.	50	50	0.2
G624 Other ranks, armed forces	130	130	0.0
G625 Other protective service occupations	40	40	0.6
G63 Security guards and related occupations	310	320	1.0
G631 Security guards and related occupations	310	330	1.0
G7 Occupations in travel and accommodation, including attendants in recreation and sport	810	860	1.1
G71 Occupations in travel and accommodation	400	420	1.2
G711 Travel counsellors	100	100	0.9
G712 Purser and flight attendants	20	20	1.2
G713 Airline sales and service agents	60	60	1.2

Cariboo Development Region

Projected Annual Growth Rates in Occupational Demand

	Estimated Employment		Avg Annual % Chng Over 5 Years
	2008	2013	2008 to 2013
G714 Ticket agents, cargo service representatives and related clerks (except airline)	30	30	1.2
G715 Hotel front desk clerks	200	210	1.5
G72 Tour and recreational guides and casino occupations	200	210	1.1
G721 Tour and travel guides	60	60	0.9
G722 Outdoor sport and recreational guides	80	90	1.1
G723 Casino occupations	60	70	1.1
G73 Other occupations in travel, accommodation, amusement and recreation	210	220	1.1
G731 Operators and attendants in amusement, recreation and sport	190	200	1.1
G732 Other attendants in accommodation and travel	20	30	1.3
G8 Child care and home support workers	1,730	1,770	0.4
G81 Child care and home support workers	1,730	1,770	0.4
G811 Visiting homemakers, housekeepers and related occupations	600	640	1.5
G812 Elementary and secondary school teacher assistants	730	700	-0.7
G814 Babysitters, nannies and parents' helpers	410	430	1.0
G9 Sales and service occupations, n.e.c.	6,960	7,310	1.0
G91 Technical occupations in personal service	410	420	0.7
G911 Hairstylists and barbers	390	400	0.7
G912 Funeral directors and embalmers	20	20	0.7
G92 Other occupations in personal service	280	290	0.8
G921 Image, social and other personal consultants	20	20	0.9
G922 Estheticians, electrologists and related occupations	150	160	0.7
G923 Pet groomers and animal care workers	100	100	0.8
G924 Other personal service occupations	10	10	0.8
G93 Cleaners	2,860	2,990	0.9
G931 Light duty cleaners	1,110	1,180	1.2
G932 Specialized cleaners	260	280	0.9
G933 Janitors, caretakers and building superintendents	1,490	1,540	0.6
G94 Butchers and bakers, retail and wholesale	300	320	1.0
G941 Butchers, meat cutters and fishmongers, retail and wholesale	130	140	0.9
G942 Bakers	170	180	1.1
G96 Food counter attendants, kitchen helpers and related occupations	1,740	1,860	1.4
G961 Food counter attendants, kitchen helpers and related occupations	1,740	1,860	1.4
G97 Other sales and related occupations	1,160	1,220	0.9
G971 Service station attendants	240	250	0.9
G972 Grocery clerks and store shelf stockers	740	770	0.9
G973 Other elemental sales occupations	190	200	1.1
G98 Other elemental service occupations	200	210	1.0
G981 Dry cleaning and laundry occupations	100	110	1.1
G982 Ironing, pressing and finishing occupations	20	20	0.8
G983 Other elemental service occupations	80	90	0.9
H Trades, transport and equipment operators and related occupations	18,080	18,300	0.2
H0 Contractors and supervisors in trades and transportation	800	780	-0.5
H01 Contractors and supervisors, trades and related workers	740	720	-0.6
H011 Supervisors, machinists and related occupations	20	20	1.4
H012 Contractors and supervisors, electrical trades and telecommunications occupations	70	70	-1.0

Cariboo Development Region

Projected Annual Growth Rates in Occupational Demand

	Estimated Employment		Avg Annual % Chng Over 5 Years
	2008	2013	2008 to 2013
H013 Contractors and supervisors, pipefitting trades	20	20	-1.2
H014 Contractors and supervisors, metal forming, shaping and erecting trades	40	40	0.5
H015 Contractors and supervisors, carpentry trades	110	100	-1.3
H016 Contractors and supervisors, mechanic trades	120	130	1.0
H017 Contractors and supervisors, heavy construction equipment crews	180	180	-0.5
H018 Supervisors, printing and related occupations	10	10	-2.8
H019 Contractors and supervisors, other construction trades, installers, repairers and servicers	160	150	-1.5
H02 Supervisors, railway and motor transportation occupations	60	70	1.0
H021 Supervisors, railway transport operations	20	20	1.2
H022 Supervisors, motor transport and other ground transit operators	40	40	1.0
H1 Construction trades	3,320	3,080	-1.4
H11 Plumbers, pipefitters and gas fitters	500	470	-1.0
H111 Plumbers	260	240	-1.7
H112 Steamfitters, pipefitters and sprinkler system installers	190	190	-0.1
H113 Gas fitters	50	50	-1.0
H12 Carpenters and cabinetmakers	1,560	1,460	-1.4
H121 Carpenters	1,450	1,350	-1.5
H122 Cabinetmakers	110	110	0.4
H13 Masonry and plastering trades	480	440	-1.8
H131 Bricklayers	80	80	-1.7
H132 Concrete finishers	70	70	-1.8
H133 Tilesetters	60	50	-1.9
H134 Plasterers, drywall installers and finishers and lathers	270	240	-1.8
H14 Other construction trades	770	710	-1.5
H141 Roofers and shinglers	170	150	-1.9
H142 Glaziers	60	60	-0.1
H143 Insulators	60	60	-1.2
H144 Painters and decorators	350	320	-1.7
H145 Floor covering installers	130	130	-1.4
H2 Stationary engineers, power station operators and electrical trades and telecommunications occupations	1,190	1,180	-0.1
H21 Electrical trades and telecommunications occupations	1,000	980	-0.3
H211 Electricians (except industrial and power system)	430	390	-1.9
H212 Industrial electricians	330	350	1.3
H213 Power system electricians	20	20	0.3
H214 Electrical power line and cable workers	70	60	-0.4
H215 Telecommunications line and cable workers	40	40	0.8
H216 Telecommunications installation and repair workers	80	80	1.0
H217 Cable television service and maintenance technicians	30	30	1.0
H22 Stationary engineers and power station and system operators	190	200	1.0
H221 Stationary engineers and auxiliary equipment operators	180	180	1.0
H222 Power systems and power station operators	10	10	0.4
H3 Machinists, metal forming, shaping and erecting occupations	870	900	0.8
H31 Machinists and related occupations	140	150	1.8
H311 Machinists and machining and tooling inspectors	130	140	1.8
H312 Tool and die makers	10	10	2.3
H32 Metal forming, shaping and erecting trades	730	750	0.6

Cariboo Development Region

Projected Annual Growth Rates in Occupational Demand

	Estimated Employment		Avg Annual % Chng Over 5 Years
	2008	2013	2008 to 2013
H321 Sheet metal workers	100	100	-0.8
H322 Boilermakers	30	30	1.0
H323 Structural metal and platework fabricators and fitters	60	60	1.4
H324 Ironworkers	60	50	-0.7
H325 Blacksmiths and die setters	-	-	-
H326 Welders and related machine operators	490	510	0.9
H4 Mechanics	2,690	2,840	1.1
H41 Machinery and transportation equipment mechanics (except motor vehicle)	1,680	1,780	1.3
H411 Construction millwrights and industrial mechanics (except textile)	890	970	1.6
H412 Heavy-duty equipment mechanics	550	580	1.1
H413 Refrigeration and air conditioning mechanics	80	70	-1.1
H414 Railway carmen/women	30	30	1.4
H415 Aircraft mechanics and aircraft inspectors	110	110	1.2
H416 Machine fitters	10	10	0.3
H417 Textile machinery mechanics and repairers	-	-	-
H418 Elevator constructors and mechanics	10	10	-1.4
H42 Automotive service technicians	870	900	0.8
H421 Automotive service technicians, truck and bus mechanics and mechanical repairers	730	760	0.8
H422 Motor vehicle body repairers	140	150	0.7
H43 Other mechanics	140	150	0.8
H431 Oil and solid fuel heating mechanics	10	10	-0.8
H432 Electric appliance servicers and repairers	40	40	0.5
H433 Electrical mechanics	20	20	0.9
H434 Motorcycle and other related mechanics	20	20	1.1
H435 Other small engine and equipment mechanics	60	60	1.0
H5 Other trades, n.e.c.	750	770	0.5
H51 Upholsterers, tailors, shoe repairers, jewellers and related occupations	100	100	0.8
H511 Upholsterers	30	30	0.8
H512 Tailors, dressmakers, furriers and milliners	50	50	0.7
H513 Shoe repairers and shoemakers	-	-	-
H514 Jewellers, watch repairers and related occupations	20	20	1.0
H52 Printing press operators, commercial divers and other trades and related occupations, n.e.c.	240	250	1.4
H521 Printing press operators	30	30	-2.4
H522 Commercial divers	10	10	0.6
H523 Other trades and related occupations	190	210	2.2
H53 Other installers, repairers and servicers	420	420	-0.1
H531 Residential and commercial installers and servicers	220	210	-1.0
H532 Waterworks and gas maintenance workers	20	20	0.1
H533 Automotive mechanical installers and servicers	100	100	0.9
H534 Pest controllers and fumigators	10	10	0.5
H535 Other repairers and servicers	70	70	1.1
H6 Heavy equipment and crane operators, including drillers	1,270	1,250	-0.4
H61 Heavy equipment operators	1,140	1,110	-0.5
H611 Heavy equipment operators (except crane)	1,040	1,010	-0.6
H612 Public works maintenance equipment operators	90	100	0.8
H62 Crane operators, drillers and blasters	140	140	0.0

Cariboo Development Region

Projected Annual Growth Rates in Occupational Demand

	Estimated Employment		Avg Annual % Chng Over 5 Years
	2008	2013	2008 to 2013
H621 Crane operators	90	90	0.4
H622 Drillers and blasters - Surface mining, quarrying and construction	40	40	-0.4
H623 Water well drillers	10	10	-1.7
H7 Transportation equipment operators and related workers, excluding labourers	4,150	4,400	1.2
H71 Motor vehicle and transit drivers	3,710	3,930	1.2
H711 Truck drivers	2,650	2,820	1.2
H712 Bus drivers and subway and other transit operators	350	360	0.8
H713 Taxi and limousine drivers and chauffeurs	210	220	1.2
H714 Delivery and courier service drivers	490	530	1.3
H72 Train crew operating occupations	170	180	1.2
H721 Railway and yard locomotive engineers	80	80	1.2
H722 Railway conductors and brakemen/women	90	90	1.2
H73 Other transport equipment operators and related workers	280	290	1.2
H731 Railway yard workers	10	20	1.5
H732 Railway track maintenance workers	60	60	1.2
H733 Deck crew, water transport	110	120	1.2
H734 Engine room crew, water transport	10	10	1.0
H735 Lock and cable ferry operators and related occupations	40	40	1.0
H736 Boat operators	30	30	1.8
H737 Air transport ramp attendants	20	20	1.3
H8 Trades helpers, construction and transportation labourers and related occupations	3,040	3,100	0.4
H81 Longshore workers and material handlers	1,470	1,610	1.9
H811 Longshore workers	70	80	1.0
H812 Material handlers	1,400	1,530	1.9
H82 Trades helpers and labourers	1,380	1,300	-1.2
H821 Construction trades helpers and labourers	1,300	1,220	-1.3
H822 Other trades helpers and labourers	80	80	0.8
H83 Public works and other labourers, n.e.c.	190	200	0.6
H831 Public works and maintenance labourers	150	160	0.5
H832 Railway and motor transport labourers	40	50	1.1
I Occupations unique to primary industry	4,890	5,280	1.6
I0 Occupations unique to agriculture, excluding labourers	1,460	1,510	0.8
I01 Contractors, operators and supervisors in agriculture, horticulture and aquaculture	800	830	0.7
I011 Farmers and farm managers	590	610	0.7
I012 Agricultural and related service contractors and managers	-	-	-
I013 Farm supervisors and specialized livestock workers	40	40	0.6
I014 Nursery and greenhouse operators and managers	30	40	1.5
I015 Landscaping and grounds maintenance contractors and managers	70	70	0.9
I016 Supervisors, landscape and horticulture	50	50	0.8
I017 Aquaculture operators and managers	20	20	0.5
I02 Agriculture and horticulture workers	650	680	0.8
I021 General farm workers	450	460	0.7
I022 Nursery and greenhouse workers	210	220	1.2
I1 Occupations unique to forestry operations, mining, oil and gas extraction and fishing, excluding labourers	1,720	1,920	2.4
I11 Supervisors, logging and forestry	180	210	3.3
I111 Supervisors, logging and forestry	180	210	3.2

Cariboo Development Region

Projected Annual Growth Rates in Occupational Demand

	Estimated Employment		Avg Annual % Chng Over 5 Years
	2008	2013	2008 to 2013
I12 Supervisors, mining, oil and gas	110	110	-0.9
I121 Supervisors, mining and quarrying	90	80	-1.5
I122 Supervisors, oil and gas drilling and service	30	30	1.0
I13 Underground miners, oil and gas drillers and related workers	140	140	-0.5
I131 Underground production and development miners	100	100	-1.1
I132 Oil and gas well drillers, servicers, testers and related workers	40	40	1.0
I14 Mine service workers and operators in oil and gas drilling	80	80	0.4
I141 Underground mine service and support workers	40	30	-0.4
I142 Oil and gas well drilling workers and services operators	40	40	1.0
I15 Logging machinery operators	640	740	3.3
I151 Logging machinery operators	630	740	3.3
I16 Logging and forestry workers	540	620	2.9
I161 Chain saw and skidder operators	390	450	3.2
I162 Silviculture and forestry workers	140	160	2.3
I17 Fishing vessel masters and skippers and fishermen/women	20	20	0.3
I171 Fishing masters and officers	-	-	-
I172 Fishing vessel skippers and fishermen/women	20	20	0.2
I18 Other fishing and trapping occupations	10	10	1.2
I181 Fishing vessel deckhands	10	10	0.4
I182 Trappers and hunters	-	-	-
I2 Primary production labourers	1,710	1,840	1.5
I21 Primary production labourers	1,710	1,840	1.5
I211 Harvesting labourers	100	100	0.7
I212 Landscaping and grounds maintenance labourers	910	950	0.8
I213 Aquaculture and marine harvest labourers	20	20	0.6
I214 Mine labourers	50	50	-1.2
I215 Oil and gas drilling, servicing and related labourers	80	80	0.8
I216 Logging and forestry labourers	550	640	3.1
J Occupations unique to processing, manufacturing and utilities	5,730	6,320	2.1
J0 Supervisors in manufacturing	500	550	2.0
J01 Supervisors, processing occupations	460	510	2.0
J011 Supervisors, mineral and metal processing	10	20	1.7
J012 Supervisors, petroleum, gas and chemical processing and utilities	40	40	1.0
J013 Supervisors, food, beverage and tobacco processing	10	10	1.2
J014 Supervisors, plastic and rubber products manufacturing	-	-	-
J015 Supervisors, forest products processing	390	440	2.1
J016 Supervisors, textile processing	-	-	-
J02 Supervisors, assembly and fabrication	40	40	2.2
J021 Supervisors, motor vehicle assembling	-	-	-
J022 Supervisors, electronics manufacturing	-	-	-
J023 Supervisors, electrical products manufacturing	-	-	-
J024 Supervisors, furniture and fixtures manufacturing	10	10	1.7
J025 Supervisors, fabric, fur and leather products manufacturing	-	-	-
J026 Supervisors, other mechanical and metal products manufacturing	10	10	1.9
J027 Supervisors, other products manufacturing and assembly	20	20	2.6
J1 Machine operators in manufacturing	2,590	2,840	1.9
J11 Central control and process operators in manufacturing and processing	260	270	0.7

Cariboo Development Region

Projected Annual Growth Rates in Occupational Demand

	Estimated Employment		Avg Annual % Chng Over 5 Years
	2008	2013	2008 to 2013
J111 Central control and process operators, mineral and metal processing	30	30	0.3
J112 Petroleum, gas and chemical process operators	40	40	1.3
J113 Pulping control operators	50	50	0.7
J114 Papermaking and coating control operators	130	140	0.6
J12 Machine operators and related workers in metal and mineral products processing	80	80	1.0
J121 Machine operators, mineral and metal processing	30	30	0.2
J122 Foundry workers	10	10	1.9
J123 Glass forming and finishing machine operators and glass cutters	10	10	2.0
J124 Concrete, clay and stone forming operators	20	20	1.5
J125 Inspectors and testers, mineral and metal processing	20	20	1.0
J13 Machine operators and related workers in chemical, plastic and rubber processing	80	80	1.0
J131 Chemical plant machine operators	10	10	1.0
J132 Plastics processing machine operators	20	20	2.2
J133 Rubber processing machine operators and related workers	10	10	1.7
J134 Water and waste plant operators	50	50	0.3
J14 Machine operators and related workers in pulp and paper production and wood processing	1,660	1,860	2.4
J141 Sawmill machine operators	790	900	2.8
J142 Pulp mill machine operators	190	200	0.7
J143 Papermaking and finishing machine operators	60	60	0.8
J144 Other wood processing machine operators	240	280	2.7
J145 Paper converting machine operators	20	20	0.7
J146 Lumber graders and other wood processing inspectors and graders	350	400	2.8
J15 Machine operators and related workers in textile processing	20	20	0.9
J151 Textile fibre and yarn preparation machine operators	-	-	-
J152 Weavers, knitters and other fabric-making occupations	10	20	1.3
J153 Textile dyeing and finishing machine operators	-	-	-
J154 Textile inspectors, graders and samplers	-	-	-
J16 Machine operators and related workers in fabric, fur and leather products manufacturing	40	40	0.9
J161 Sewing machine operators	40	40	0.9
J162 Fabric, fur and leather cutters	-	-	-
J163 Hide and pelt processing workers	-	-	-
J164 Inspectors and testers, fabric, fur and leather products manufacturing	-	-	-
J17 Machine operators and related workers in food, beverage and tobacco processing	110	110	1.1
J171 Process control and machine operators, food and beverage processing	50	60	1.2
J172 Industrial butchers and meat cutters, poultry preparers and related workers	10	10	1.0
J173 Fish plant workers	30	30	1.1
J174 Tobacco processing machine operators	-	-	-
J175 Testers and graders, food and beverage processing	10	10	1.1
J18 Printing machine operators and related occupations	110	100	-0.7
J181 Printing machine operators	30	30	-1.7
J182 Camera, platemaking and other pre-press occupations	10	10	-3.2
J183 Binding and finishing machine operators	20	10	-2.4
J184 Photographic and film processors	50	60	0.9
J19 Machining, metalworking, woodworking and related machine operators	240	270	2.3
J191 Machining tool operators	20	20	1.7
J192 Forging machine operators	-	-	-

Cariboo Development Region

Projected Annual Growth Rates in Occupational Demand

	Estimated Employment		Avg Annual % Chng Over 5 Years
	2008	2013	2008 to 2013
J193 Woodworking machine operators	180	210	2.4
J194 Metalworking machine operators	30	40	2.0
J196 Other metal products machine operators	10	10	1.0
J197 Other products machine operators	-	-	-
J2 Assemblers in manufacturing	580	640	2.2
J21 Mechanical, electrical and electronics assemblers	60	60	1.6
J211 Aircraft assemblers and aircraft assembly inspectors	-	-	-
J212 Motor vehicle assemblers, inspectors and testers	20	20	1.3
J213 Electronics assemblers, fabricators, inspectors and testers	10	10	1.8
J214 Assemblers and inspectors, electrical appliance, apparatus and equipment manufacturing	10	10	1.7
J215 Assemblers, fabricators and inspectors, industrial electrical motors and transformers	-	-	-
J216 Mechanical assemblers and inspectors	20	20	2.1
J217 Machine operators and inspectors, electrical apparatus manufacturing	-	-	-
J22 Other assembly and related occupations	520	570	2.2
J221 Boat assemblers and inspectors	20	20	1.3
J222 Furniture and fixture assemblers and inspectors	100	110	1.9
J223 Other wood products assemblers and inspectors	280	320	2.8
J224 Furniture finishers and refinishers	30	40	1.2
J225 Plastic products assemblers, finishers and inspectors	10	20	2.5
J226 Painters and coaters, industrial	40	50	1.2
J227 Plating, metal spraying and related operators	-	-	-
J228 Other assemblers and inspectors	30	30	1.6
J3 Labourers in processing, manufacturing and utilities	2,060	2,290	2.2
J31 Labourers in processing, manufacturing and utilities	2,060	2,290	2.2
J311 Labourers in mineral and metal processing	30	40	1.5
J312 Labourers in metal fabrication	40	40	2.0
J313 Labourers in chemical products processing and utilities	20	20	1.3
J314 Labourers in wood, pulp and paper processing	1,650	1,850	2.5
J315 Labourers in rubber and plastic products manufacturing	20	20	2.6
J316 Labourers in textile processing	10	10	2.0
J317 Labourers in food, beverage and tobacco processing	120	130	1.2
J318 Labourers in fish processing	20	20	1.2
J319 Other labourers in processing, manufacturing and utilities	160	170	1.1