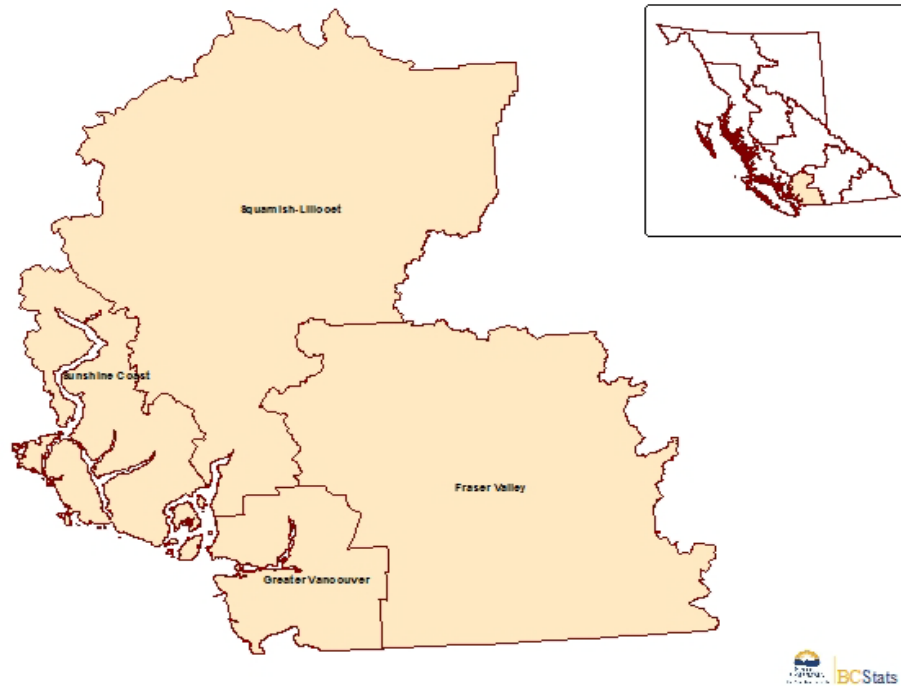


British Columbia: Regional Employment Projection Model

INDUSTRY AND OCCUPATION PROJECTIONS: 2008 to 2013

Mainland/Southwest Development Region



Background Information on Geographic Location of Population				
Major Cities	Population	% of	Land	Population
	2006 Census	Region	Area	Density
			<i>Sq Km</i>	<i>Persons per Sq Km</i>
Vancouver, C	578041	23.7	114.7	5,039.2
Surrey, C	394976	16.2	317.2	1,245.2
Burnaby, C	202,799	8.3	89.1	2,275.6
Richmond, C	174461	7.2	128.8	1,354.9
Abbotsford, C	123,864	5.1	359.4	344.7
Coquitlam, C	114565	4.7	121.7	941.4
Delta, DM	96723	4.0	183.7	526.5
Langley, DM	93726	3.8	306.9	305.4
North Vancouver, DM	82562	3.4	160.7	513.9
Chilliwack, C	69,217	2.8	260.2	266.0
Maple Ridge, DM	68949	2.8	265.8	259.4
New Westminster, C	58,549	2.4	15.4	3,799.4
Port Coquitlam, C	52,687	2.2	28.9	1,826.2
North Vancouver, C	45,165	1.9	11.9	3,811.4
West Vancouver, DM	42,131	1.7	87.1	483.5
Mission, DM	34,505	1.4	225.8	152.8
Port Moody, C	27,512	1.1	25.6	1,073.8
Langley, C	23,606	1.0	10.2	2,309.8
Rest of region	152,558	6.3	33,657.9	4.5
Total Region	2,436,596	100.0	36,370.8	67.0
Region as % of BC	59.2		3.9	
Youth age 15-29	490,600			
Youth in Region as % of BC	62.5			

Prepared by: **BC Stats**

Note to Users

All assumptions relating to employment are based on past conditions, modified wherever possible to take into consideration future changes. The resulting employment projections are not necessarily what will be, but rather what could be, given the realization of these conditions. It is certainly possible that unforeseen changes in factors such as economic development, government policy, or land use and zoning will affect future employment. Consequently, the projections should only be regarded as one possible scenario on the future size and distribution of the workforce.

It is important for users to understand that the same set of industries and occupations are reported for each of the 7 Development Regions, regardless of the importance of these industries to any particular regional economy. Some of these industries, while significant to the province overall, may have a very small presence in a particular region. For example, the Beverage Manufacturing industry could show up as the highest growth rate for each region of the province because the wine industry is expected to grow, but this would mean the Thompson-Okanagan Development Region would gain hundreds of jobs while the Northeast would gain 5 to 10 jobs at the most. For this reason, growth rates should be viewed in the context of the size of the occupational or industry grouping to clarify the number of jobs being created or lost and the potential impact the change would have on the local economy.

For information on the Regional Districts contained in the Development Regions, see [Appendix 3: REGIONAL DISTRICT TO DEVELOPMENT REGION CONVERSION](#)

The December 2008 version of the Major Projects Inventory was used in the development of the employment projections for the 2008-2013 version of the REPM. A full listing of all the Major Projects under construction or at the proposal stage can be found at http://www.bcstats.gov.bc.ca/pubs/pr_mproj.asp

Regional Employment Projection Model (REPM)

Contents

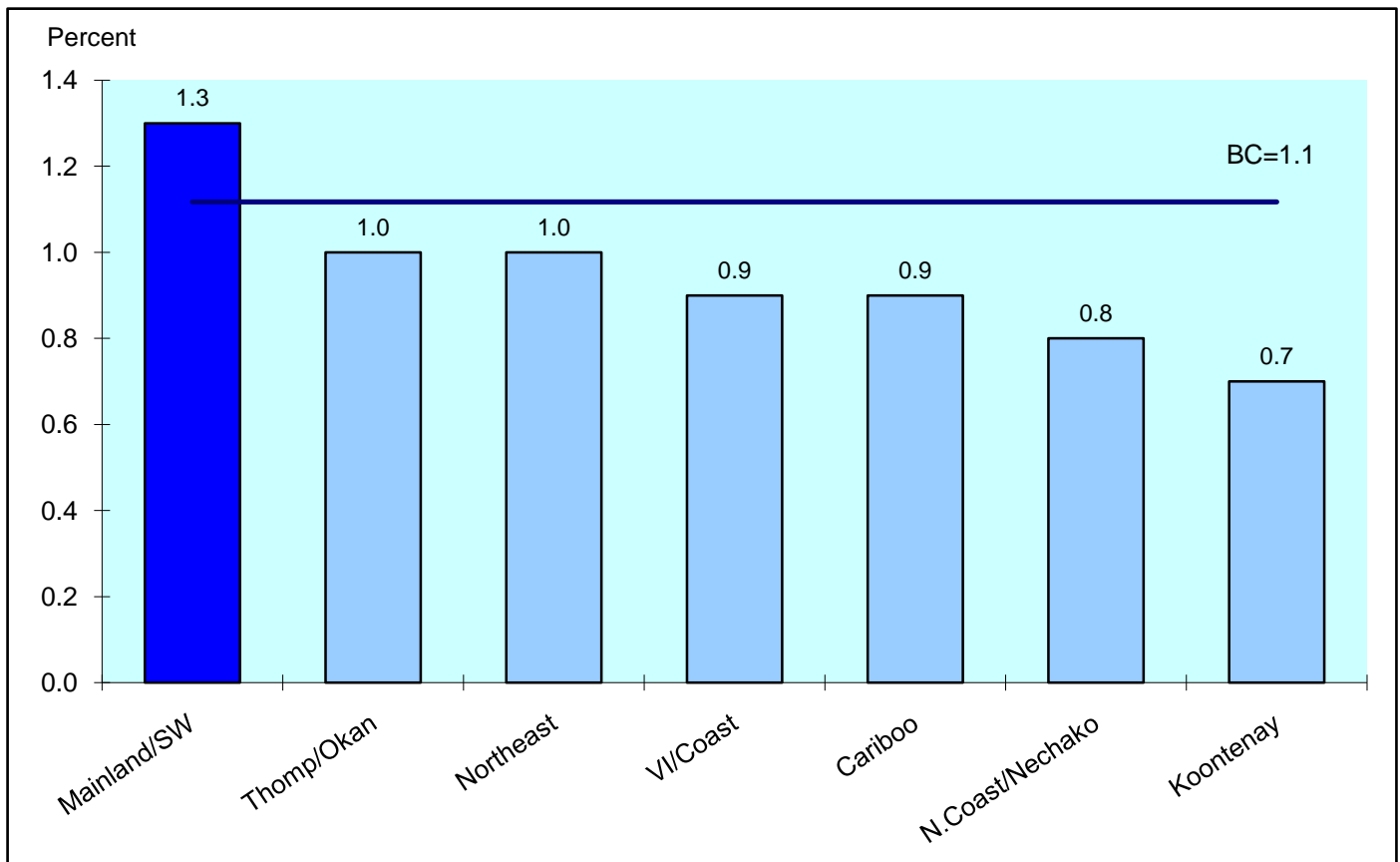
1. Projected Annual Growth in Employment Demand by Development Region
2. Projected Annual Growth in Employment Demand. Comparison between Industries
3. Industrial Structure Compared with BC. Percent Share of Employment by Industry
4. Projected Annual Growth in Employment Demand. Comparison between Occupations
5. Occupational Structure Compared with BC. Percent Share of Employment by Occupation
6. Projected Annual Growth Rates in Occupational Demand, 2-digit occupation

Appendices

1. Summary of the Methodology for the BC REPM
2. COPS Industry Conversion for REPM
3. Regional District to Development Region Conversion for REPM
4. Projected Annual Growth Rates in Occupational Demand (3-digit)
5. Projected Annual Growth Rates in Occupational Demand (4-digit)

Funding for this project was made possible through the Labour Market Information initiative under the Canada-British Columbia Labour Market Agreement (LMA), which is administered for B.C. by the Ministry of Advanced Education and Labour Market Development.

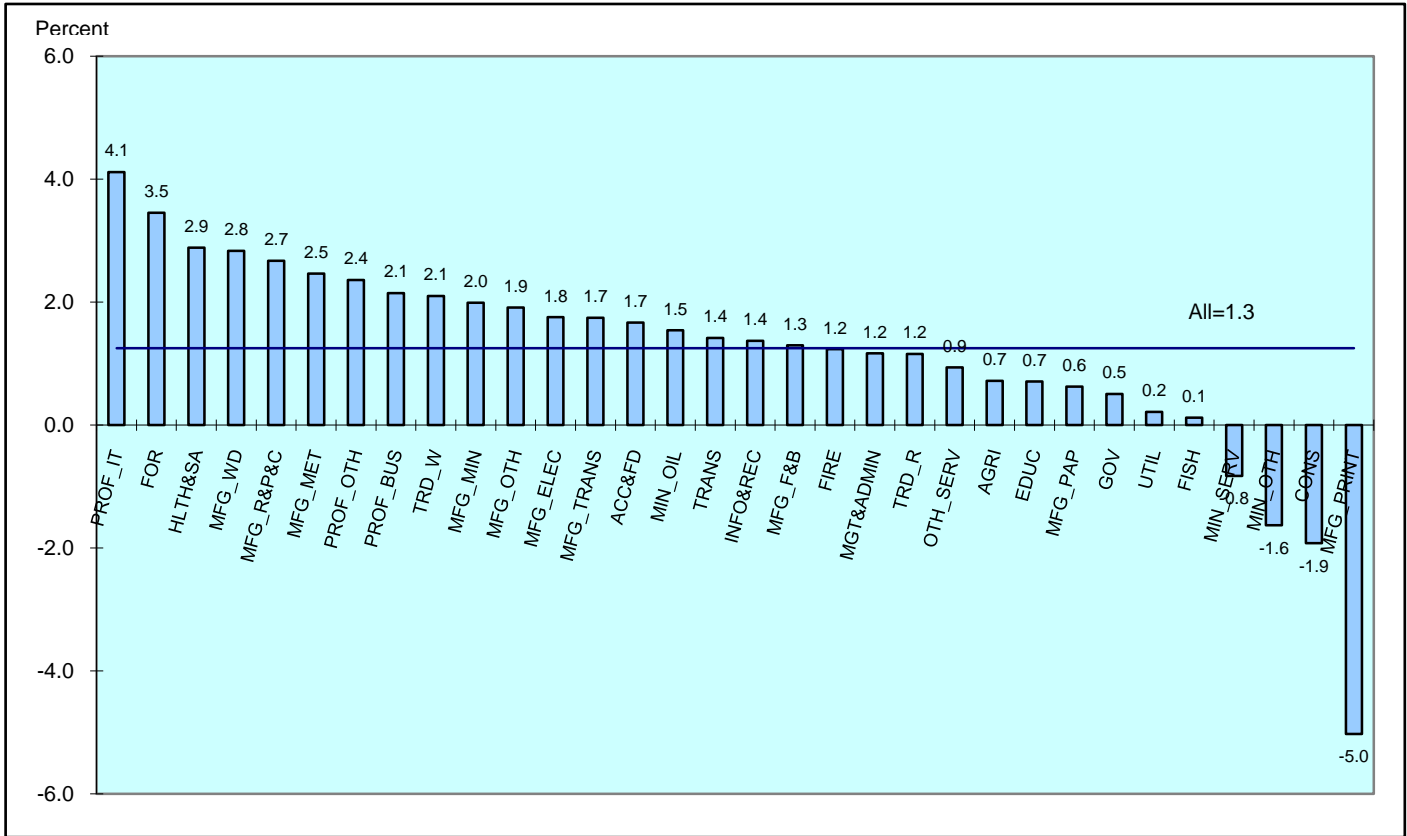
Projected Annual Growth in Employment Demand by Development Region*



<u>Development Region*</u>	<u>Estimated Employment</u>		<u>Avg Annual % Chng Over 5 Years</u>
	<u>2008</u>	<u>2013</u>	<u>2008 to 2013</u>
Vancouver Island/Coast	391,580	408,700	0.9
Mainland/Southwest	1,397,840	1,485,380	1.3
Thompson-Okanagan	263,110	276,880	1.0
Kootenay	81,900	84,780	0.7
Cariboo	86,070	89,930	0.9
North Coast & Nechako	50,260	52,320	0.8
Northeast	42,940	45,010	1.0
Total	2,313,700	2,443,000	1.1

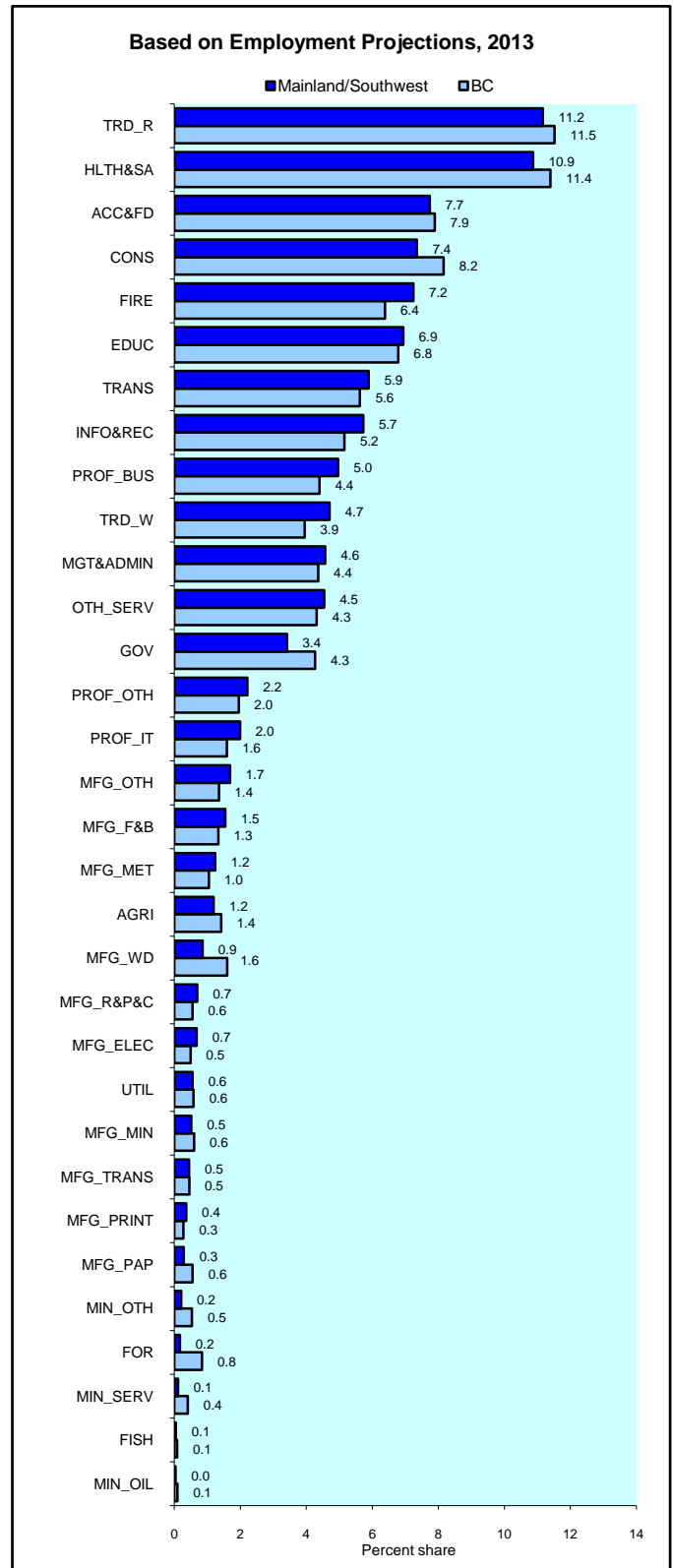
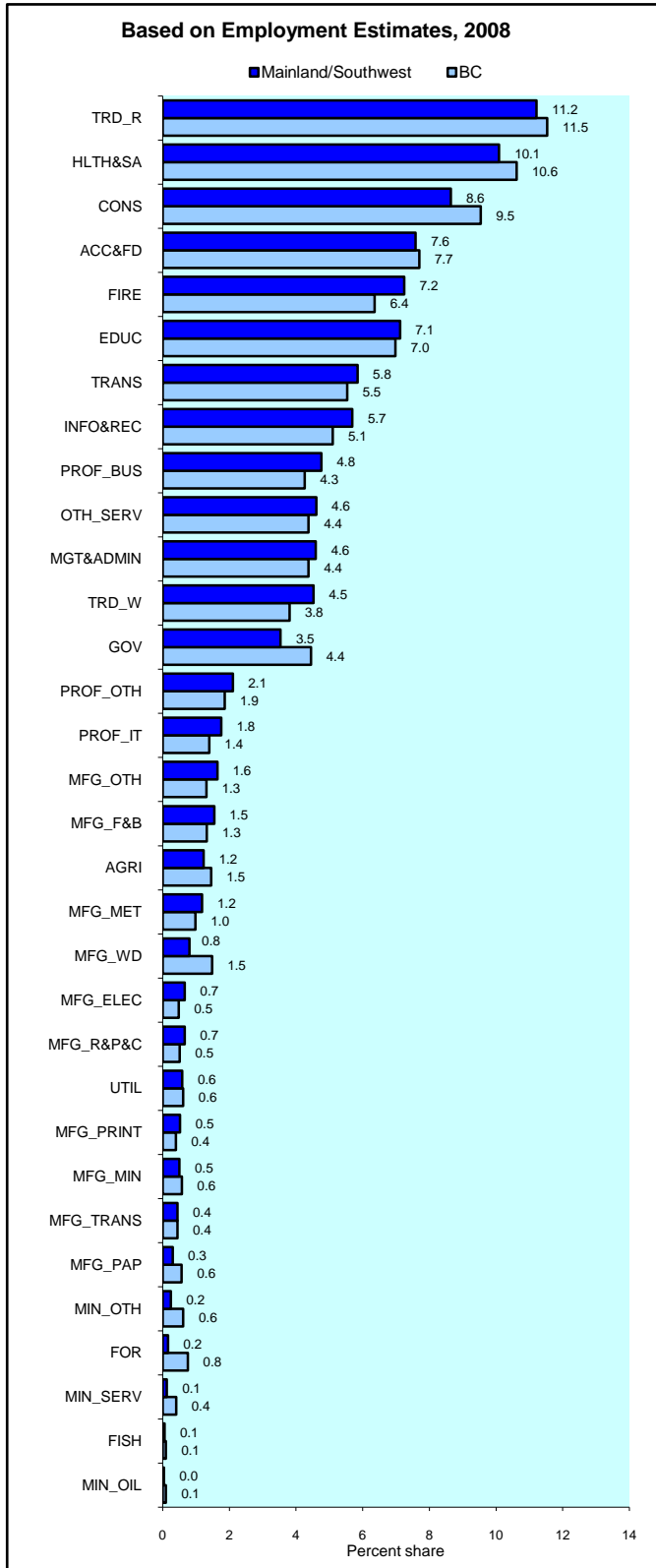
* See Appendix 3 for details on the Regional Districts included in the Development Regions.

Mainland/Southwest Development Region Projected Annual Growth in Employment Demand Comparison Between Industries

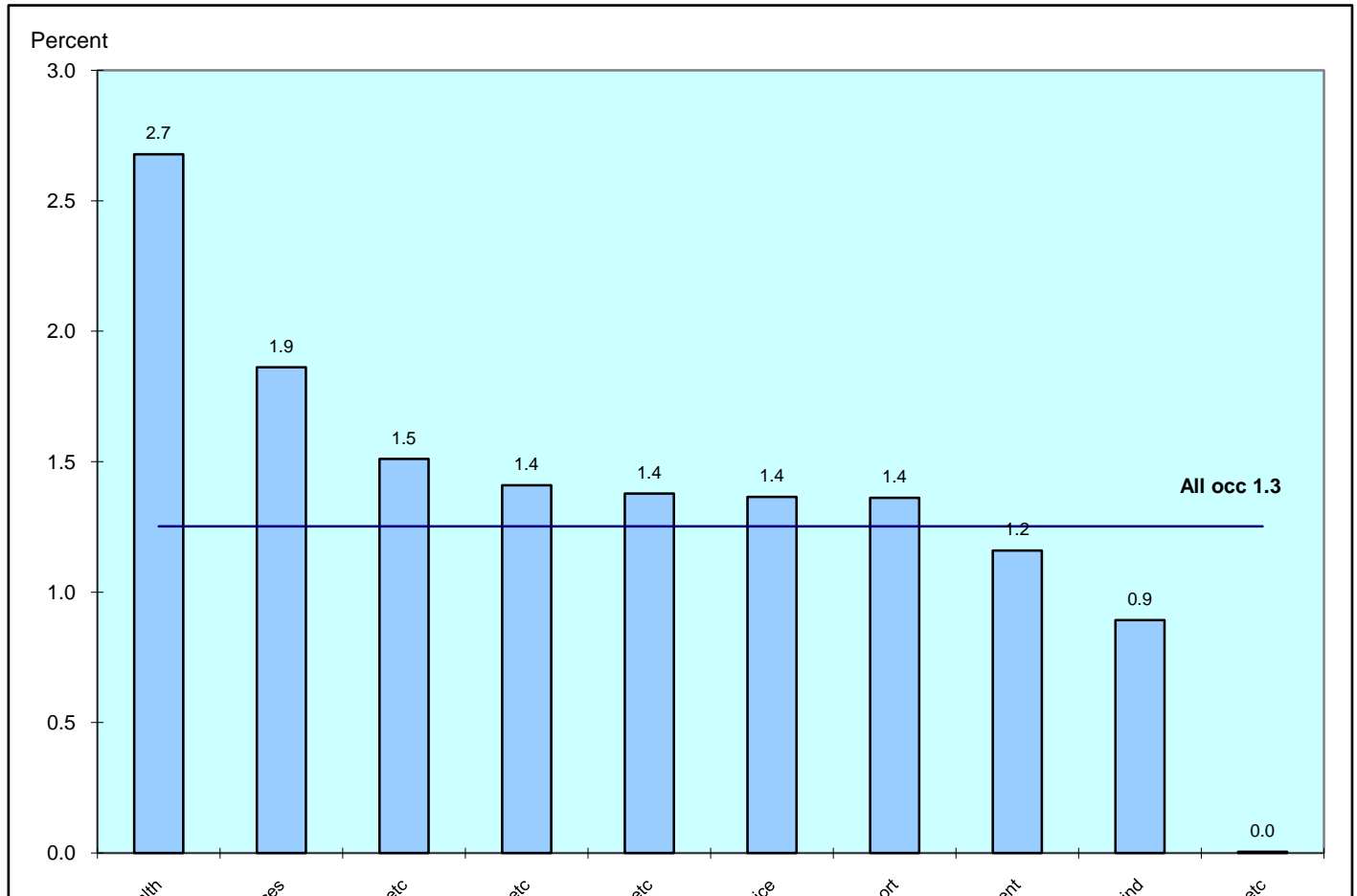


	Avg Annual % Chng Over 5 Years				Avg Annual % Chng Over 5 Years		
	Estimated Employment 2008	Estimated Employment 2013	2008 to 2013		Estimated Employment 2008	Estimated Employment 2013	2008 to 2013
Goods Producing Ind				Service Producing Ind.			
Agriculture	17,140	17,760	0.7	Trade--Wholesale	63,240	69,880	2.1
Forestry	2,190	2,570	3.5	Trade--Retail	156,760	165,830	1.2
Fishing, Hunting, & Trapping	750	760	0.1	Transportation	81,700	87,480	1.4
Oil & Gas	560	610	1.5	Finance, Insurance, R.E.	101,310	107,550	1.2
Mining (non Oil & Gas)	3,440	3,160	-1.6	Prof--Bus Services	66,560	73,700	2.1
Services to Mining	1,720	1,640	-0.8	Prof--Computer Systems	24,540	29,590	4.1
Utilities	8,190	8,280	0.2	Prof--Other Services	29,450	32,930	2.4
Construction	120,800	109,200	-1.9	Management/Admin/Other :	64,170	67,920	1.2
Mfg--Food & Beverages	21,610	23,010	1.3	Education	99,570	103,090	0.7
Mfg--Wood Products	11,180	12,770	2.8	Health & Social Assist.	141,060	161,410	2.9
Mfg--Paper Products	4,170	4,300	0.6	Information, Culture, Rec	79,550	84,990	1.4
Mfg--Printing	7,250	5,430	-5.0	Accom & Food Services	106,080	114,930	1.7
Mfg--Rubber, Plas. Chem	9,180	10,410	2.7	Services--other	64,410	67,430	0.9
Mfg--Mineral Products	7,010	7,710	2.0	Government	49,430	50,680	0.5
Mfg--Metal Fab & Machinery	16,470	18,500	2.5				
Mfg--Comp, Electronic, Elect	9,260	10,070	1.8	Total Service Producing	1,127,830	1,217,410	1.6
Mfg--Transportation Eq.	6,160	6,700	1.7				
Mfg--Other	22,920	25,110	1.9	Total, all industries	1,397,840	1,485,380	1.3
Total Goods Producing	270,010	267,970	-0.2				

Mainland/Southwest Development Region Industrial Structure Compared with BC Percent Share of Employment by Industry

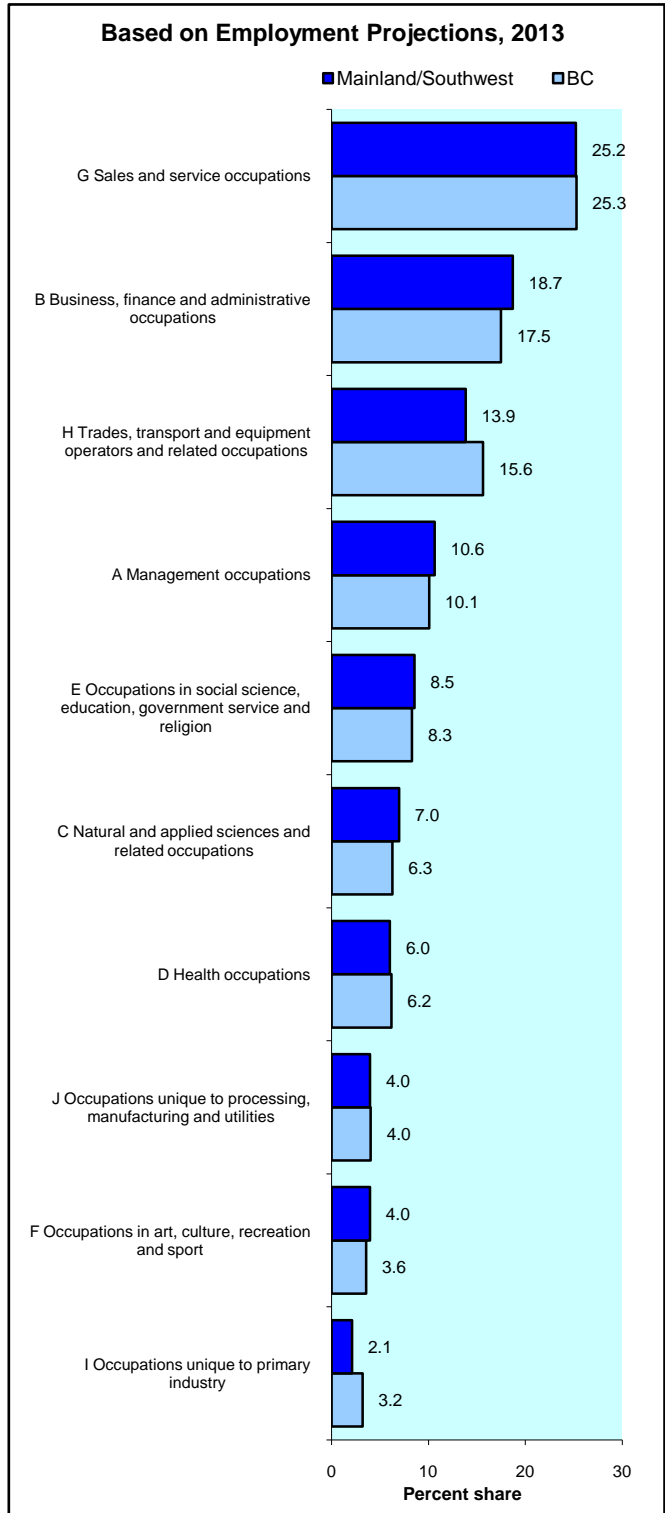
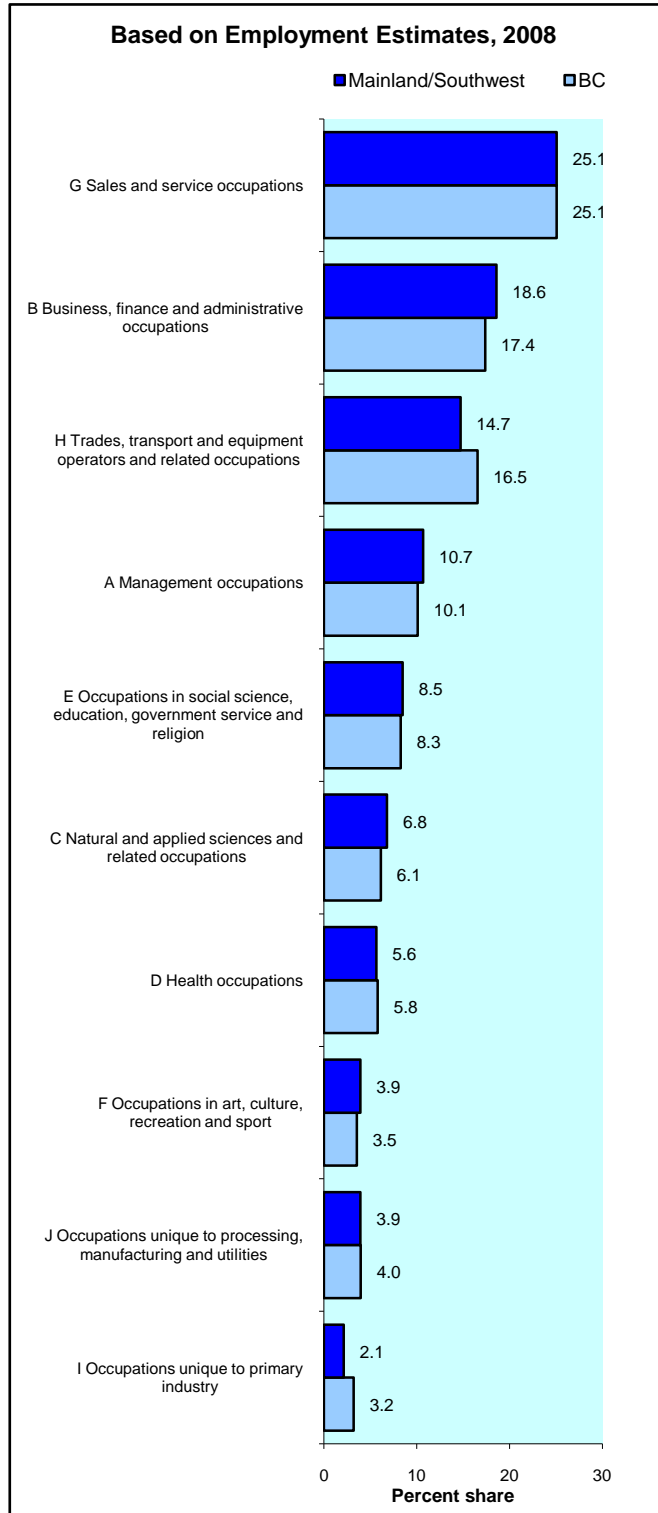


Mainland/Southwest Development Region Projected Annual Growth in Employment Demand Comparison Between Occupations



	Estimated Employment		Avg Annual % Chng Over 5 Years
	2008	2013	2008 to 2013
All occupations	1,397,840	1,485,380	1.3
A Management occupations	149,360	158,020	1.2
B Business finance and administrative occupations	259,780	277,690	1.4
C Natural and applied sciences and related occupations	94,940	103,770	1.9
D Health occupations	78,970	89,550	2.7
E Occupations in social science, education, government serv, & religion	118,590	126,950	1.4
F Occupations in art culture recreation and sport	54,980	58,720	1.4
G Sales and service occupations	350,630	374,560	1.4
H Trades transport and equipment operators and related occupations	205,720	205,770	0.0
I Occupations unique to primary industry	29,980	31,320	0.9
J Occupations unique to processing manufacturing and utilities	54,900	59,050	1.5

Mainland/Southwest Development Region Occupational Structure Compared with BC Percent Share of Employment by Occupation



Mainland/Southwest Development Region

Projected Annual Growth Rates in Occupational Demand

	Estimated Employment		Avg Annual % Chng Over 5 Years
	<u>2008</u>	<u>2013</u>	<u>2008 to 2013</u>
	All occupations	1,397,840	1,485,380
A0 Senior management occupations	16,900	17,990	1.3
A1 Specialist managers	38,510	41,700	1.7
A2 Managers in retail trade food and accommodation services	41,220	43,920	1.3
A3 Other managers n.e.c.	52,730	54,390	0.6
B0 Professional occupations in business and finance	40,620	43,680	1.5
B1 Finance and insurance administration occupations	21,470	22,770	1.2
B2 Secretaries	21,140	22,530	1.3
B3 Administrative and regulatory occupations	32,580	34,520	1.2
B4 Clerical supervisors	7,290	7,800	1.4
B5 Clerical occupations	136,680	146,380	1.4
C0 Professional occupations in natural and applied sciences	55,140	61,060	2.1
C1 Technical occupations related to natural and applied sciences	39,800	42,720	1.5
D0 Professional occupations in health	17,980	20,350	2.6
D1 Nurse supervisors and registered nurses	23,050	26,310	2.8
D2 Technical and related occupations in health	17,450	19,660	2.5
D3 Assisting occupations in support of health services	20,530	23,260	2.7
E0 Judges, lawyers, psychologists, social workers, ministers of religion & policy/program officers	31,590	34,390	1.8
E1 Teachers and professors	54,740	56,820	0.8
E2 Paralegals, social services workers & occup. in educ. & religion n.e.c.	32,290	35,770	2.2
F0 Professional occupations in art and culture	24,120	25,700	1.3
F1 Technical occupations in art, culture, recreation and sport	30,870	33,030	1.4
G0 Sales and service supervisors	10,220	10,910	1.4
G1 Wholesale, technical, insurance, real estate sales specialists & retail, wholesale and grain buyers	32,550	35,140	1.6
G2 Retail salespersons and sales clerks	66,820	70,780	1.2
G3 Cashiers	26,640	28,340	1.3
G4 Chefs and cooks	23,010	24,950	1.7
G5 Occupations in food and beverage service	24,000	25,990	1.7
G6 Occupations in protective services	18,630	19,460	0.9
G7 Occup. in travel & accommodation incl. attendants in recreation & sport	18,990	20,290	1.4
G8 Childcare and home support workers	23,560	25,460	1.6
G9 Sales and service occupations n.e.c.	106,260	113,290	1.3
H0 Contractors and supervisors in trades and transportation	11,000	10,570	-0.8
H1 Construction trades	49,620	46,000	-1.5
H2 Stationary engineers, power stn operators & electrical trades & telecom.	13,340	13,020	-0.5
H3 Machinists, metal forming, shaping and erecting occupations	12,270	12,990	1.2
H4 Mechanics	22,450	23,500	0.9
H5 Other trades n.e.c.	10,600	10,640	0.1
H6 Heavy equipment and crane operators including drillers	6,370	6,100	-0.9
H7 Transport equipment operators & related workers, excl. labourers	40,130	42,760	1.3
H8 Trades helpers, construction and transport labourers & related	39,950	40,200	0.1
I0 Occupations unique to agriculture, excluding labourers	14,540	15,110	0.8

Mainland/Southwest Development Region

Projected Annual Growth Rates in Occupational Demand

	Estimated Employment		Avg Annual % Chng Over 5 Years
	<u>2008</u>	<u>2013</u>	<u>2008 to 2013</u>
I1 Occup. unique to forestry ops, mining, oil & gas extraction, fishing excl. labourers	2,220	2,320	0.9
I2 Primary production labourers	13,210	13,880	1.0
J0 Supervisors in manufacturing	3,210	3,490	1.8
J1 Machine operators in manufacturing	23,620	25,200	1.3
J2 Assemblers in manufacturing	11,220	12,280	1.9
J3 Labourers in processing, manufacturing and utilities	16,900	18,110	1.4

Appendix 1

Summary of Methodology for the British Columbia Regional Employment Projection Model (REPM)

Summary of Methodology for the British Columbia Regional Employment Projection Model (REPM)

Overview

The methodology used in the model is based on previous work on community dependencies carried out by BC Stats. The fundamental premise is that the economy of a region can be represented by income flows that can be classified as “basic” (or driver) and “non-basic” (or induced) depending on the source of the income. Basic income is the result of employment income generated from “basic jobs” plus investment income.

Included among basic jobs are those that are financed from resources emanating from outside the region. These jobs are labelled as “direct jobs” and are found in industries that export their product internationally, nationally or to other regions within B.C. Typically, export industries are in the goods producing sector, e.g., the primary and manufacturing industries. However, with globalization, certain industries in the service producing sector are increasingly exporting their products; examples of this would be port facilities (categorized in the Water Transport industry), the Financial and Insurance industries, and High Technology Business Service industries (such as Engineering), etc. As well, the metropolitan regions provide retail and wholesale trade services to the outlying regions of B.C. and many local economies provide tourism services such as accommodation, food, and recreation services to residents from other regions (both inside and outside the province).

Another less obvious component of direct jobs are those in the public sector. Education, health and government jobs are generated through tax revenues from the Federal or Provincial governments so those industries rely on general tax revenues coming from outside the region¹.

The other component of basic jobs is classified as “indirect jobs”. The model calculates indirect employment effects from employment changes in direct jobs. For example, when direct jobs are created in a local sawmill, indirect jobs will be created in the “upstream” industries that supply goods and services that go into the production of lumber such as the logging industry, the equipment manufacturing industry, etc., and in the “downstream” industries that get the lumber to market such as the transportation industry, and the wholesale trade industry, etc. The model calculates these indirect jobs using multipliers based on inter-industry linkages from the British Columbia Input-Output Model. The sum of the direct jobs and the indirect jobs are labelled basic jobs. The wages and salaries earned from these basic jobs are the major component of basic income.

The other component of basic income is principally investment income and transfer payments which are assumed to come from outside the local community. Private pensions comprise a large percent of investment income, while Canada Pension Plan and Old Age Security payments form a large percent of transfer payments. Therefore, the growth in the senior population is used as an indicator of changes in this non-salary/non-wage component of basic income.

¹ For the purpose of the model, tax payments are treated as an income flow-out of the regional economy and are deducted from total income so are not connected with any particular industry.

Up to this point, the model has calculated the number of basic jobs by industry and the total basic income of the local region. The next step is to calculate the number of jobs created as a result of the expenditure of this basic income by the local population on household goods and services such as retail trades, restaurants, transportation, residential construction, etc. These induced jobs are called “non-basic jobs” and are calculated using a multiplier based on an income to non-basic jobs ratio derived from the British Columbia Input-Output Model. The final result is a count of the number of non-basic jobs by industry which is then added to the basic jobs to derive total jobs by industry by region.

The final component of the model is to convert the industry employment levels into occupation employment levels. To this end, fixed occupation-to-industry ratios, based on the 2006 Census of Canada data, are applied. Three different ratio structures are used: one for the Vancouver Census Metropolitan Area, one for the Victoria Census Metropolitan Area, and one for the “Rest of Province”.

Data Sources

The current version of the model is benchmarked to the 2006 Census employment by Regional District (RD), and estimates are projected forward to the most up-to-date annual employment data from the Labour Force Survey (LFS). The growth rates for the direct industries from the LFS at the provincial level are used to project growth down to the RD level and then the sub-provincial growth rates are refined using standard variables that indicate differential growth between the regions. The population estimates and projections produced by BC Stats are an important data source for this purpose. For example, the employment growth in the education sector is largely dictated by the projected K-12 and post-secondary population growth in the relevant age groups. Government Services industry grows in line with the total population growth as does the social assistance industry. Employment in the health sector is primarily governed by the growth in the total population and, in particular, by the growth in the seniors’ population. The industries that have components in the tourism sector are differentiated according to the sub-provincial growth rates in tax revenues derived from room rentals. A further important determining factor of sub-region direct employment growth in the private sector is the major projects underway in the timeframe.

The output from the model is benchmarked to the LFS industry employment numbers at the B.C. level, as well as to the LFS regional employment numbers for the Development Regions and the Victoria and Vancouver Census Metropolitan Areas.

Once the model is updated to the most current employment levels, then the forecast is produced for five years out. The industrial employment projections from the Canadian Occupational Projection System (COPS) are now used as the source data for the industrial growth, benchmarked to the British Columbia Ministry of Finance’s employment growth rate projections for the goods producing sector and the service producing sector. These growth rates are used in determining both the growth rates in the direct employment and as a benchmark to reconcile the industrial employment generated by the model. The allocation of the provincial growth pattern forecast among the regions is done the same way as the estimates. Population forecasts by Regional District and the information on planned capital projects from the BC Major Projects Inventory are used as the drivers. The one exception is there are no forecasts available

for Room Tax Revenue so, for the tourism industries, the new completed major projects in the food and accommodation sector are integrated into the model.

Currently, there is a demand for economic forecasts by occupation at the Development Region level. Development Regions are aggregations of sub-sets of Regional Districts. Occupational forecasts are produced at the Development Region and the provincial level only. The accompanying appendices contain a conversion table which outlines which Regional District belongs to which College Region.

Updating

The intent is to update the Regional Employment Projection Model annually, based on another year of LFS data plus a new COPS forecast. The multiplier coefficients used to calculate indirect employment, non-basic employment, and occupational employment are to be updated every five years when regional updated Census data becomes available. At that time, the Regional District employment data by industry will also be re-benchmarked.

The model is only as good as the input data assumptions. Reliance on good quality data from COPS is very important. Users of the data who perceive any problems with the assumptions in the model or question the quality of any of the data series we are using, should contact Cathy Stock, Director, Labour and Social Statistics, at (250) 953-3703 or Cathy.Stock@gov.bc.ca.

July 2009

Appendix 2

REPM INDUSTRY

COPS INDUSTRY

ACC&FD	31 Accommodation and food services
AGRIC	1 Agriculture
BEVMFG	9 Food and Beverage Products
BUS_HI	25 Computer System Design Services
BUS_HI	24 Professional Business Services
BUS_HI	26 Other Professional Services
BUS_LO	27 Management, Administrative and Other Support
BUS_LO	24 Professional Business Services
BUS_LO	26 Other Professional Services
COMMUNICA	30 Information, culture and recreation
CONSTRUCT	8 Construction
EDUCATION	28 Educational Services
FIRE	23 Finance, Insurance, Real Estate and Leasing
FISHING	3 Fishing, Hunting and Trapping
FISHMFG	9 Food and Beverage Products
FOODMFG	9 Food and Beverage Products
FORESTLOG	2 Forestry and Logging with support activities
GOVT	33 Public administration
HEALTH	29 Health Care and Social Assistance
MINING	5 Mining (except Oil and Gas)
MINING	6 Support Activities for Mining and Oil & Gas Extraction
MINMFG	14 Manufactured Mineral Products
OTHMFG	12 Printing and Related Support Activities
OTHMFG	13 Rubber, Plastics and Chemicals
OTHMFG	14 Manufactured Mineral Products
OTHMFG	15 Metal Fabrication and Machinery (excluding electrical)
OTHMFG	16 Computer, Electronic and Electrical Products
OTHMFG	17 Transportation Equipment Manufacturing
OTHMFG	18 Other Manufacturing
OTHSERV	29 Health Care and Social Assistance
OTHSERV	32 Other services
PAPERPULP	11 Paper Manufacturing
PETROL	4 Oil and Gas Extraction
PETROL	6 Support Activities for Mining and Oil and Gas Extraction
PETROLMFG	19 Other Manufacturing
RETAIL	21 Retail Trade
TRANOTHER	22 Transportation and Warehousing
TRANRAIL	22 Transportation and Warehousing
TRANTRUCK	22 Transportation and Warehousing
TRANWATER	22 Transportation and Warehousing
UTILITIES	7 Utilities
WDOTHER	10 Wood Product Manufacturing
WDSAWMILLS	10 Wood Product Manufacturing
WHOLESALE	20 Wholesale Trade

Appendix 3

Regional District to Development Region Conversion for REPM

DR name	DR #	RD Name	RD #
Vancouver Island/Coast	1	Capital	17
Vancouver Island/Coast	1	Cowichan Valley	19
Vancouver Island/Coast	1	Nanaimo	21
Vancouver Island/Coast	1	Alberni-Clayoquot	23
Vancouver Island/Coast	1	Comox-Strathcona	25
Vancouver Island/Coast	1	Powell River	27
Vancouver Island/Coast	1	Mount Waddington	43
Vancouver Island/Coast	1	Central Coast	45
Mainland/Southwest	2	Fraser Valley	9
Mainland/Southwest	2	Greater Vancouver	15
Mainland/Southwest	2	Sunshine Coast	29
Mainland/Southwest	2	Squamish-Lillooet	31
Thompson-Okanagan	3	Okanagan-Similkameen	7
Thompson-Okanagan	3	Thompson-Nicola	33
Thompson-Okanagan	3	Central Okanagan	35
Thompson-Okanagan	3	North Okanagan	37
Thompson-Okanagan	3	Columbia-Shuswap	39
Kootenay	4	East Kootenay	1
Kootenay	4	Central Kootenay	3
Kootenay	4	Kootenay-Boundary	5
Cariboo	5	Cariboo	41
Cariboo	5	Fraser-Fort George	53
North Coast	6	Skeena- Queen Charlotte	47
North Coast	6	Kitimat-Stikine	49
Nechako	7	Bulkley-Nechako	51
Nechako	7	Stikine	57
Northeast	8	Peace River	55
Northeast	8	Northern Rockies	57

Appendix 4

Projected Annual Growth Rates in Occupational Demand (3-digit)

Mainland/Southwest Development Region

Projected Annual Growth Rates in Occupational Demand

	Estimated Employment		Avg Annual % Chng Over 5 Years
	<u>2008</u>	<u>2013</u>	<u>2008 to 2013</u>
All occupations	1,397,840	1,485,380	1.3
A01 Legislators and senior management	16,930	18,030	1.3
A11 Administrative services managers	12,820	13,730	1.4
A12 Managers in engineering, architecture, science and information systems	5,970	6,590	2.1
A13 Sales, marketing and advertising managers	16,120	17,550	1.8
A14 Facility operation and maintenance managers	3,570	3,810	1.3
A21 Managers in retail trade	29,220	30,920	1.2
A22 Managers in food service and accommodation	12,010	13,000	1.7
A30 Managers in financial and business services	16,070	17,030	1.2
A31 Managers in communication (except broadcasting)	1,260	1,350	1.4
A32 Managers in health, education, social and community services	6,760	7,260	1.5
A33 Managers in public administration	830	870	0.9
A34 Managers in art, culture, recreation and sport	1,940	2,060	1.2
A35 Managers in protective service	580	600	0.5
A36 Managers in other services	3,170	3,350	1.1
A37 Managers in construction and transportation	14,540	13,810	-1.0
A38 Managers in primary production (except agriculture)	680	690	0.3
A39 Managers in manufacturing and utilities	6,920	7,410	1.4
B01 Auditors, accountants and investment professionals	31,760	34,060	1.4
B02 Human resources and business service professionals	8,880	9,640	1.7
B11 Finance and insurance administrative occupations	21,470	22,760	1.2
B21 Secretaries, recorders and transcriptionists	21,150	22,540	1.3
B31 Administrative and regulatory occupations	32,580	34,520	1.2
B41 Clerical supervisors	7,300	7,810	1.4
B51 Clerical occupations, general office skills	44,190	47,620	1.6
B52 Office equipment operators	5,250	5,610	1.4
B53 Finance and insurance clerks	29,870	31,820	1.3
B54 Administrative support clerks	10,740	11,530	1.5
B55 Library, correspondence and related information clerks	17,310	18,390	1.3
B56 Mail and message distribution occupations	9,380	10,020	1.4
B57 Recording, scheduling and distributing occupations	19,930	21,390	1.5
C01 Physical science professionals	2,910	3,120	1.5
C02 Life science professionals	2,310	2,510	1.8
C03 Civil, mechanical, electrical and chemical engineers	11,930	12,840	1.5
C04 Other engineers	5,180	5,700	2.0
C05 Architects, urban planners and land surveyors	4,030	4,380	1.7
C06 Mathematicians, statisticians and actuaries	350	390	2.0
C07 Computer and information systems professionals	28,430	32,110	2.6
C11 Technical occupations in physical sciences	2,710	2,920	1.5
C12 Technical occupations in life sciences	2,880	3,050	1.2
C13 Technical occupations in civil, mechanical and industrial engineering	3,940	4,070	0.7
C14 Technical occupations in electronics and electrical engineering	8,020	8,590	1.4
C15 Technical occupations in architecture, drafting, surveying and mapping	6,060	6,580	1.7
C16 Other technical inspectors and regulatory officers	2,970	3,090	0.8
C17 Transportation officers and controllers	3,630	3,890	1.4
C18 Technical occupations in computer and information systems	9,620	10,560	2.0
D01 Physicians, dentists and veterinarians	10,120	11,560	2.9

Mainland/Southwest Development Region

Projected Annual Growth Rates in Occupational Demand

	Estimated Employment		Avg Annual % Chng Over 5 Years
	<u>2008</u>	<u>2013</u>	<u>2008 to 2013</u>
D02 Optometrists, chiropractors and other health diagnosing and treating professionals	830	940	2.8
D03 Pharmacists, dietitians and nutritionists	3,140	3,420	1.8
D04 Therapy and assessment professionals	3,860	4,380	2.7
D11 Nurse supervisors and registered nurses	23,030	26,290	2.8
D21 Medical technologists and technicians (except dental health)	7,230	8,210	2.7
D22 Technical occupations in dental health care	2,380	2,690	2.7
D23 Other technical occupations in health care (except dental)	7,790	8,700	2.3
D31 Assisting occupations in support of health services	20,510	23,240	2.7
E01 Judges, lawyers and Quebec notaries	8,680	9,520	1.9
E02 Psychologists, social workers, counsellors, clergy and probation officers	9,470	10,370	1.9
E03 Policy and program officers, researchers and consultants	13,400	14,450	1.6
E11 University professors and assistants	13,280	13,770	0.7
E12 College and other vocational instructors	10,110	10,570	0.9
E13 Secondary and elementary school teachers and educational counsellors	31,360	32,490	0.7
E21 Paralegals, social services workers and occupations in education and religion, n.e.c.	32,290	35,770	2.2
F01 Librarians, archivists, conservators and curators	1,430	1,520	1.3
F02 Writing, translating and public relations professionals	8,950	9,620	1.5
F03 Creative and performing artists	13,690	14,510	1.2
F11 Technical occupations in libraries, archives, museums and art galleries	1,910	2,020	1.2
F12 Photographers, graphic arts technicians and technical and co-ordinating occupations in motion pictures, broadcasting and the performing arts	7,070	7,590	1.5
F13 Announcers and other performers	1,010	1,080	1.4
F14 Creative designers and craftspersons	11,120	11,970	1.5
F15 Athletes, coaches, referees and related occupations	9,760	10,370	1.2
G01 Sales and service supervisors	10,220	10,910	1.4
G11 Sales representatives, wholesale trade	14,370	15,600	1.7
G12 Technical sales specialists, wholesale trade	4,940	5,480	2.2
G13 Insurance and real estate sales occupations and buyers	13,290	14,110	1.2
G21 Retail salespersons and sales clerks	66,810	70,770	1.2
G31 Cashiers	26,640	28,340	1.3
G41 Chefs and cooks	23,010	24,940	1.7
G51 Occupations in food and beverage service	24,000	26,000	1.7
G61 Police officers and firefighters	6,330	6,500	0.5
G62 Other occupations in protective service	3,710	3,850	0.7
G63 Security guards and related occupations	8,550	9,060	1.2
G71 Occupations in travel and accommodation	11,910	12,750	1.4
G72 Tour and recreational guides and casino occupations	4,240	4,520	1.3
G73 Other occupations in travel, accommodation, amusement and recreation	2,820	3,010	1.3
G81 Child care and home support workers	23,560	25,460	1.6
G91 Technical occupations in personal service	6,680	7,000	1.0
G92 Other occupations in personal service	5,180	5,460	1.1
G93 Cleaners	36,470	38,630	1.2
G94 Butchers and bakers, retail and wholesale	5,610	5,980	1.3
G96 Food counter attendants, kitchen helpers and related occupations	30,170	32,750	1.7
G97 Other sales and related occupations	17,480	18,520	1.2
G98 Other elemental service occupations	4,660	4,950	1.3

Mainland/Southwest Development Region

Projected Annual Growth Rates in Occupational Demand

	Estimated Employment		Avg Annual % Chng Over 5 Years
	<u>2008</u>	<u>2013</u>	<u>2008 to 2013</u>
H01 Contractors and supervisors, trades and related workers	10,280	9,800	-0.9
H02 Supervisors, railway and motor transportation occupations	690	730	1.3
H11 Plumbers, pipefitters and gas fitters	7,490	6,960	-1.4
H12 Carpenters and cabinetmakers	19,520	18,290	-1.3
H13 Masonry and plastering trades	7,610	6,960	-1.7
H14 Other construction trades	15,000	13,800	-1.6
H21 Electrical trades and telecommunications occupations	12,390	12,010	-0.6
H22 Stationary engineers and power station and system operators	940	1,000	1.2
H31 Machinists and related occupations	2,840	3,120	2.0
H32 Metal forming, shaping and erecting trades	9,450	9,890	0.9
H41 Machinery and transportation equipment mechanics (except motor vehicle)	10,080	10,480	0.8
H42 Automotive service technicians	10,580	11,130	1.1
H43 Other mechanics	1,820	1,920	1.0
H51 Upholsterers, tailors, shoe repairers, jewellers and related occupations	3,060	3,280	1.5
H52 Printing press operators, commercial divers and other trades and related occupations, n.e.c.	2,310	2,130	-1.5
H53 Other installers, repairers and servicers	5,230	5,230	0.0
H61 Heavy equipment operators	5,260	5,030	-0.9
H62 Crane operators, drillers and blasters	1,080	1,030	-0.9
H71 Motor vehicle and transit drivers	36,230	38,600	1.3
H72 Train crew operating occupations	860	920	1.4
H73 Other transport equipment operators and related workers	3,000	3,200	1.3
H81 Longshore workers and material handlers	18,990	20,400	1.5
H82 Trades helpers and labourers	18,880	17,650	-1.3
H83 Public works and other labourers, n.e.c.	2,090	2,170	0.8
I01 Contractors, operators and supervisors in agriculture, horticulture and aquaculture	7,500	7,780	0.7
I02 Agriculture and horticulture workers	7,060	7,340	0.8
I11 Supervisors, logging and forestry	170	190	2.5
I12 Supervisors, mining, oil and gas	180	180	-0.3
I13 Underground miners, oil and gas drillers and related workers	310	300	-0.7
I14 Mine service workers and operators in oil and gas drilling	130	130	0.2
I15 Logging machinery operators	320	370	3.0
I16 Logging and forestry workers	410	450	1.8
I17 Fishing vessel masters and skippers and fishermen/women	510	520	0.2
I18 Other fishing and trapping occupations	150	160	0.8
I21 Primary production labourers	13,240	13,910	1.0
J01 Supervisors, processing occupations	2,190	2,380	1.7
J02 Supervisors, assembly and fabrication	1,010	1,110	1.9
J11 Central control and process operators in manufacturing and processing	660	710	1.6
J12 Machine operators and related workers in metal and mineral products processing	1,620	1,760	1.7
J13 Machine operators and related workers in chemical, plastic and rubber processing	1,730	1,900	2.0
J14 Machine operators and related workers in pulp and paper production and wood processing	3,230	3,560	2.0

Mainland/Southwest Development Region

Projected Annual Growth Rates in Occupational Demand

	Estimated Employment		Avg Annual % Chng Over 5 Years
	<u>2008</u>	<u>2013</u>	<u>2008 to 2013</u>
J15 Machine operators and related workers in textile processing	690	740	1.6
J16 Machine operators and related workers in fabric, fur and leather products manufacturing	4,590	5,020	1.9
J17 Machine operators and related workers in food, beverage and tobacco processing	5,080	5,410	1.3
J18 Printing machine operators and related occupations	3,110	2,880	-1.4
J19 Machining, metalworking, woodworking and related machine operators	2,900	3,210	2.1
J21 Mechanical, electrical and electronics assemblers	3,700	4,030	1.8
J22 Other assembly and related occupations	7,510	8,240	1.9
J31 Labourers in processing, manufacturing and utilities	16,910	18,120	1.4

Appendix 5

Projected Annual Growth Rates in Occupational Demand (4-digit)

Mainland/Southwest Development Region

Projected Annual Growth Rates in Occupational Demand

	Estimated Employment		Avg Annual % Chng Over 5 Years
	2008	2013	2008 to 2013
All occupations	1,397,840	1,485,380	1.3
A Management occupations	149,360	158,020	1.2
A0 Senior management occupations	16,900	17,990	1.3
A01 Legislators and senior management	16,930	18,030	1.3
A011 Legislators	360	370	0.6
A012 Senior government managers and officials	790	810	0.6
A013 Senior managers - Financial, communications and other business services	5,630	6,200	2.0
A014 Senior managers - Health, education, social and community services and membership organizations	1,590	1,710	1.5
A015 Senior managers - Trade, broadcasting and other services, n.e.c.	4,070	4,400	1.6
A016 Senior managers - Goods production, utilities, transportation and construction	4,450	4,490	0.2
A1 Specialist managers	38,510	41,700	1.7
A11 Administrative services managers	12,820	13,730	1.4
A111 Financial managers	5,310	5,670	1.4
A112 Human resources managers	2,950	3,160	1.4
A113 Purchasing managers	890	960	1.5
A114 Other administrative services managers	3,680	3,960	1.5
A12 Managers in engineering, architecture, science and information systems	5,970	6,590	2.1
A121 Engineering managers	1,500	1,640	1.8
A122 Computer and information systems managers	3,920	4,350	2.2
A123 Architecture and science managers	570	630	1.8
A13 Sales, marketing and advertising managers	16,120	17,550	1.8
A131 Sales, marketing and advertising managers	16,150	17,580	1.8
A14 Facility operation and maintenance managers	3,570	3,810	1.3
A141 Facility operation and maintenance managers	3,560	3,800	1.3
A2 Managers in retail trade, food and accommodation services	41,220	43,920	1.3
A21 Managers in retail trade	29,220	30,920	1.2
A211 Retail trade managers	29,220	30,930	1.2
A22 Managers in food service and accommodation	12,010	13,000	1.7
A221 Restaurant and food service managers	9,600	10,400	1.7
A222 Accommodation service managers	2,400	2,590	1.6
A3 Other managers, n.e.c.	52,730	54,390	0.6
A30 Managers in financial and business services	16,070	17,030	1.2
A301 Insurance, real estate and financial brokerage managers	8,720	9,220	1.1
A302 Banking, credit and other investment managers	6,660	7,060	1.2
A303 Other business services managers	680	740	1.6
A31 Managers in communication (except broadcasting)	1,260	1,350	1.4
A311 Telecommunication carriers managers	910	970	1.4
A312 Postal and courier services managers	380	410	1.4
A32 Managers in health, education, social and community services	6,760	7,260	1.5
A321 Managers in health care	1,570	1,780	2.7
A322 Administrators - Post-secondary education and vocational training	1,430	1,480	0.7
A323 School principals and administrators of elementary and secondary education	2,240	2,330	0.8
A324 Managers in social, community and correctional services	1,520	1,680	2.0
A33 Managers in public administration	830	870	0.9

Mainland/Southwest Development Region

Projected Annual Growth Rates in Occupational Demand

	Estimated Employment		Avg Annual % Chng Over 5 Years
	2008	2013	2008 to 2013
A331 Government managers - Health and social policy development and program administration	190	200	1.1
A332 Government managers - Economic analysis, policy development and program administration	440	460	1.0
A333 Government managers - Education policy development and program administration	20	20	0.6
A334 Other managers in public administration	170	180	0.6
A34 Managers in art, culture, recreation and sport	1,940	2,060	1.2
A341 Library, archive, museum and art gallery managers	310	330	1.3
A342 Managers - Publishing, motion pictures, broadcasting and performing arts	860	920	1.2
A343 Recreation, sports and fitness program and service directors	780	820	1.1
A35 Managers in protective service	580	600	0.5
A351 Commissioned police officers	80	80	0.5
A352 Fire chiefs and senior firefighting officers	160	160	0.6
A353 Commissioned officers, armed forces	340	350	0.5
A36 Managers in other services	3,170	3,350	1.1
A361 Other services managers	3,170	3,350	1.1
A37 Managers in construction and transportation	14,540	13,810	-1.0
A371 Construction managers	8,110	7,520	-1.4
A372 Residential home builders and renovators	3,760	3,430	-1.7
A373 Transportation managers	2,680	2,860	1.4
A38 Managers in primary production (except agriculture)	680	690	0.3
A381 Primary production managers (except agriculture)	690	700	0.3
A39 Managers in manufacturing and utilities	6,920	7,410	1.4
A391 Manufacturing managers	5,950	6,400	1.5
A392 Utilities managers	980	1,000	0.6
B Business, finance and administrative occupations	259,780	277,690	1.4
B0 Professional occupations in business and finance	40,620	43,680	1.5
B01 Auditors, accountants and investment professionals	31,760	34,060	1.4
B011 Financial auditors and accountants	19,000	20,490	1.6
B012 Financial and investment analysts	2,670	2,860	1.4
B013 Securities agents, investment dealers and brokers	3,130	3,320	1.3
B014 Other financial officers	6,930	7,350	1.2
B02 Human resources and business service professionals	8,880	9,640	1.7
B021 Specialists in human resources	3,280	3,490	1.3
B022 Professional occupations in business services to management	5,630	6,190	2.0
B1 Finance and insurance administration occupations	21,470	22770	1.2
B11 Finance and insurance administrative occupations	21,470	22760	1.2
B111 Bookkeepers	12,070	12790	1.2
B112 Loan officers	3,730	3960	1.3
B113 Insurance adjusters and claims examiners	2,990	3170	1.2
B114 Insurance underwriters	1,150	1220	1.3
B115 Assessors, valuers and appraisers	930	990	1.1
B116 Customs, ship and other brokers	540	570	1.3
B2 Secretaries	21,140	22530	1.3
B21 Secretaries, recorders and transcriptionists	21,150	22540	1.3
B211 Secretaries (except legal and medical)	15,840	16700	1.1

Mainland/Southwest Development Region

Projected Annual Growth Rates in Occupational Demand

	Estimated Employment		Avg Annual % Chng Over 5 Years
	2008	2013	2008 to 2013
B212 Legal secretaries	3,580	3910	1.8
B213 Medical secretaries	940	1070	2.8
B214 Court recorders and medical transcriptionists	790	870	1.9
B3 Administrative and regulatory occupations	32,580	34520	1.2
B31 Administrative and regulatory occupations	32,580	34520	1.2
B311 Administrative officers	15,820	16840	1.3
B312 Executive assistants	2,850	3030	1.3
B313 Personnel and recruitment officers	1,320	1410	1.4
B314 Property administrators	6,570	6930	1.1
B315 Purchasing agents and officers	1,830	1950	1.3
B316 Conference and event planners	1,640	1750	1.3
B317 Court officers and justices of the peace	250	260	0.5
B318 Immigration, employment insurance and revenue officers	2,310	2370	0.5
B4 Clerical supervisors	7,290	7800	1.4
B41 Clerical supervisors	7,300	7810	1.4
B411 Supervisors, general office and administrative support clerks	1,190	1280	1.5
B412 Supervisors, finance and insurance clerks	1,910	2030	1.2
B413 Supervisors, library, correspondence and related information clerks	1,330	1420	1.3
B414 Supervisors, mail and message distribution occupations	490	520	1.4
B415 Supervisors, recording, distributing and scheduling occupations	2,400	2580	1.5
B5 Clerical occupations	136,680	146380	1.4
B51 Clerical occupations, general office skills	44,190	47620	1.6
B511 General office clerks	25,700	27330	1.3
B513 Records management and filing clerks	2,150	2320	1.6
B514 Receptionists and switchboard operators	16,370	18020	2.0
B52 Office equipment operators	5,250	5610	1.4
B522 Data entry clerks	4,530	4860	1.4
B523 Desktop publishing operators and related occupations	390	400	1.0
B524 Telephone operators	350	370	1.4
B53 Finance and insurance clerks	29,870	31820	1.3
B531 Accounting and related clerks	13,990	14940	1.4
B532 Payroll clerks	2,460	2630	1.3
B533 Customer service representatives - Financial services	8,380	8890	1.2
B534 Banking, insurance and other financial clerks	4,010	4260	1.2
B535 Collectors	1,100	1170	1.3
B54 Administrative support clerks	10,740	11530	1.5
B541 Administrative clerks	9,650	10350	1.5
B542 Personnel clerks	840	910	1.6
B543 Court clerks	230	240	0.5
B55 Library, correspondence and related information clerks	17,310	18390	1.3
B551 Library clerks	800	850	1.3
B552 Correspondence, publication and related clerks	400	430	1.4
B553 Customer service, information and related clerks	14,650	15580	1.3
B554 Survey interviewers and statistical clerks	1,440	1520	1.1
B56 Mail and message distribution occupations	9,380	10020	1.4
B561 Mail, postal and related clerks	3,380	3610	1.3
B562 Letter carriers	2,700	2890	1.4

Mainland/Southwest Development Region

Projected Annual Growth Rates in Occupational Demand

	Estimated Employment		Avg Annual % Chng Over 5 Years
	2008	2013	2008 to 2013
B563 Couriers, messengers and door-to-door distributors	3,290	3510	1.3
B57 Recording, scheduling and distributing occupations	19,930	21390	1.5
B571 Shippers and receivers	9,280	9970	1.5
B572 Storekeepers and parts clerks	2,060	2210	1.5
B573 Production clerks	1,530	1630	1.4
B574 Purchasing and inventory clerks	4,020	4340	1.6
B575 Dispatchers and radio operators	2,530	2680	1.2
B576 Transportation route and crew schedulers	470	500	1.6
C Natural and applied sciences and related occupations	94,940	103770	1.9
C0 Professional occupations in natural and applied sciences	55,140	61060	2.1
C01 Physical science professionals	2,910	3120	1.5
C011 Physicists and astronomers	230	260	2.1
C012 Chemists	1,300	1440	2.1
C013 Geologists, geochemists and geophysicists	1,130	1180	0.8
C014 Meteorologists	60	60	0.6
C015 Other professional occupations in physical sciences	170	170	0.5
C02 Life science professionals	2,310	2510	1.8
C021 Biologists and related scientists	1,730	1880	1.7
C022 Forestry professionals	470	510	2.0
C023 Agricultural representatives, consultants and specialists	100	110	1.3
C03 Civil, mechanical, electrical and chemical engineers	11,930	12840	1.5
C031 Civil engineers	4,840	5140	1.2
C032 Mechanical engineers	3,230	3510	1.7
C033 Electrical and electronics engineers	3,240	3510	1.7
C034 Chemical engineers	640	700	1.9
C04 Other engineers	5,180	5700	2.0
C041 Industrial and manufacturing engineers	940	1030	1.8
C042 Metallurgical and materials engineers	220	230	1.7
C043 Mining engineers	380	400	0.8
C044 Geological engineers	380	420	1.9
C045 Petroleum engineers	170	180	1.2
C046 Aerospace engineers	200	220	2.1
C047 Computer engineers (except software engineers)	2,530	2,820	2.3
C048 Other professional engineers, n.e.c.	390	420	1.8
C05 Architects, urban planners and land surveyors	4,030	4,380	1.7
C051 Architects	2,320	2,560	2.1
C052 Landscape architects	220	250	2.1
C053 Urban and land use planners	710	740	0.9
C054 Land surveyors	790	840	1.5
C06 Mathematicians, statisticians and actuaries	350	390	2.0
C061 Mathematicians, statisticians and actuaries	350	380	2.0
C07 Computer and information systems professionals	28,430	32,110	2.6
C071 Information systems analysts and consultants	10,080	11,290	2.4
C072 Database analysts and data administrators	1,010	1,110	2.0
C073 Software engineers and designers	4,760	5,400	2.7
C074 Computer programmers and interactive media developers	9,920	11,250	2.7
C075 Web designers and developers	2,680	3,060	2.9

Mainland/Southwest Development Region

Projected Annual Growth Rates in Occupational Demand

	Estimated Employment		Avg Annual % Chng Over 5 Years
	2008	2013	2008 to 2013
C1 Technical occupations related to natural and applied sciences	39,800	42,720	1.5
C11 Technical occupations in physical sciences	2,710	2,920	1.5
C111 Chemical technologists and technicians	1,980	2,160	1.8
C112 Geological and mineral technologists and technicians	710	740	0.8
C113 Meteorological technicians	40	50	1.2
C12 Technical occupations in life sciences	2,880	3,050	1.2
C121 Biological technologists and technicians	660	710	1.4
C122 Agricultural and fish products inspectors	330	350	0.9
C123 Forestry technologists and technicians	530	570	1.7
C124 Conservation and fishery officers	270	280	0.7
C125 Landscape and horticultural technicians and specialists	1,100	1,160	1.1
C13 Technical occupations in civil, mechanical and industrial engineering	3,940	4,070	0.7
C131 Civil engineering technologists and technicians	820	870	1.3
C132 Mechanical engineering technologists and technicians	760	820	1.7
C133 Industrial engineering and manufacturing technologists and technicians	780	840	1.6
C134 Construction estimators	1,590	1,540	-0.6
C14 Technical occupations in electronics and electrical engineering	8,020	8,590	1.4
C141 Electrical and electronics engineering technologists and technicians	2,020	2,170	1.5
C142 Electronic service technicians (household and business equipment)	5,030	5,380	1.4
C143 Industrial instrument technicians and mechanics	400	430	1.2
C144 Aircraft instrument, electrical and avionics mechanics, technicians and inspectors	560	600	1.4
C15 Technical occupations in architecture, drafting, surveying and mapping	6,060	6,580	1.7
C151 Architectural technologists and technicians	980	1,060	1.8
C152 Industrial designers	880	960	2.0
C153 Drafting technologists and technicians	3,300	3,580	1.7
C154 Land survey technologists and technicians	150	150	0.4
C155 Mapping and related technologists and technicians	680	740	1.7
C16 Other technical inspectors and regulatory officers	2,970	3,090	0.8
C161 Non-destructive testers and inspectors	190	200	1.9
C162 Engineering inspectors and regulatory officers	300	310	0.9
C163 Inspectors in public and environmental health and occupational health and safety	1,250	1,340	1.3
C164 Construction inspectors	1,210	1,220	0.2
C17 Transportation officers and controllers	3,630	3,890	1.4
C171 Air pilots, flight engineers and flying instructors	1,800	1,930	1.4
C172 Air traffic control and related occupations	440	470	1.4
C173 Deck officers, water transport	940	1,000	1.3
C174 Engineer officers, water transport	380	410	1.5
C175 Railway traffic controllers and marine traffic regulators	60	60	1.2
C18 Technical occupations in computer and information systems	9,620	10,560	2.0
C181 Computer network technicians	3,820	4,160	1.8
C182 User support technicians	4,880	5,370	2.0
C183 Systems testing technicians	920	1,040	2.6
D Health occupations	78,970	89,550	2.7
D0 Professional occupations in health	17,980	20,350	2.6
D01 Physicians, dentists and veterinarians	10,120	11,560	2.9

Mainland/Southwest Development Region

Projected Annual Growth Rates in Occupational Demand

	Estimated Employment		Avg Annual % Chng Over 5 Years
	2008	2013	2008 to 2013
D011 Specialist physicians	3,190	3,650	2.9
D012 General practitioners and family physicians	4,270	4,880	2.9
D013 Dentists	2,270	2,600	2.9
D014 Veterinarians	380	420	2.2
D02 Optometrists, chiropractors and other health diagnosing and treating professionals	830	940	2.8
D021 Optometrists	250	290	2.8
D022 Chiropractors	410	470	2.9
D023 Other professional occupations in health diagnosing and treating	180	200	2.8
D03 Pharmacists, dietitians and nutritionists	3,140	3,420	1.8
D031 Pharmacists	2,400	2,590	1.6
D032 Dietitians and nutritionists	750	850	2.6
D04 Therapy and assessment professionals	3,860	4,380	2.7
D041 Audiologists and speech-language pathologists	670	740	2.1
D042 Physiotherapists	1,610	1,850	2.9
D043 Occupational therapists	870	1,000	2.9
D044 Other professional occupations in therapy and assessment	710	800	2.6
D1 Nurse supervisors and registered nurses	23,050	26,310	2.8
D11 Nurse supervisors and registered nurses	23,030	26,290	2.8
D111 Head nurses and supervisors	760	870	2.7
D112 Registered nurses	22,280	25,430	2.8
D2 Technical and related occupations in health	17,450	19,660	2.5
D21 Medical technologists and technicians (except dental health)	7,230	8,210	2.7
D211 Medical laboratory technologists and pathologists' assistants	1,870	2,130	2.8
D212 Medical laboratory technicians	2,040	2,320	2.8
D213 Veterinary and animal health technologists and technicians	820	910	2.2
D214 Respiratory therapists, clinical perfusionists and cardio-pulmonary technologists	480	550	2.9
D215 Medical radiation technologists	1,230	1,410	2.9
D216 Medical sonographers	280	330	2.9
D217 Cardiology technologists	250	290	2.9
D218 Electroencephalographic and other diagnostic technologists, n.e.c.	50	50	2.7
D219 Other medical technologists and technicians (except dental health)	190	210	2.1
D22 Technical occupations in dental health care	2,380	2,690	2.7
D221 Denturists	130	140	2.5
D222 Dental hygienists and dental therapists	1,260	1,440	2.8
D223 Dental technologists, technicians and laboratory bench workers	1,020	1,150	2.4
D23 Other technical occupations in health care (except dental)	7,790	8,700	2.3
D231 Opticians	780	850	1.7
D232 Midwives and practitioners of natural healing	1,270	1,440	2.6
D233 Licensed practical nurses	2,520	2,870	2.8
D234 Ambulance attendants and other paramedical occupations	1,690	1,870	2.0
D235 Other technical occupations in therapy and assessment	1,560	1,710	2.0
D3 Assisting occupations in support of health services	20,530	23,260	2.7
D31 Assisting occupations in support of health services	20,510	23,240	2.7
D311 Dental assistants	3,720	4,250	2.8
D312 Nurse aides, orderlies and patient service associates	12,720	14,520	2.8
D313 Other assisting occupations in support of health services	4,060	4,460	2.0
E Occupations in social science, education, government service and religion	118,590	126,950	1.4

Mainland/Southwest Development Region

Projected Annual Growth Rates in Occupational Demand

	Estimated Employment		Avg Annual % Chng Over 5 Years
	2008	2013	2008 to 2013
E0 Judges, lawyers, psychologists, social workers, ministers of religion, and policy and program officers	31,590	34,390	1.8
E01 Judges, lawyers and Quebec notaries	8,680	9,520	1.9
E011 Judges	220	230	0.5
E012 Lawyers and Quebec notaries	8,500	9,340	2.0
E02 Psychologists, social workers, counsellors, clergy and probation officers	9,470	10,370	1.9
E021 Psychologists	1,240	1,380	2.3
E022 Social workers	3,000	3,330	2.2
E023 Family, marriage and other related counsellors	2,310	2,600	2.5
E024 Ministers of religion	2,550	2,680	1.0
E025 Probation and parole officers and related occupations	380	400	0.6
E03 Policy and program officers, researchers and consultants	13,400	14,450	1.6
E031 Natural and applied science policy researchers, consultants and program officers	1,100	1,190	1.7
E032 Economists and economic policy researchers and analysts	440	480	1.6
E033 Business development officers and marketing researchers and consultants	5,000	5,440	1.8
E034 Social policy researchers, consultants and program officers	1,410	1,500	1.4
E035 Education policy researchers, consultants and program officers	1,540	1,610	0.9
E036 Recreation, sports and fitness program supervisors and consultants	1,240	1,340	1.5
E037 Program officers unique to government	530	540	0.5
E038 Other professional occupations in social science, n.e.c.	530	580	1.8
E039 Health policy researchers, consultants and program officers	1,590	1,770	2.2
E1 Teachers and professors	54,740	56,820	0.8
E11 University professors and assistants	13,280	13,770	0.7
E111 University professors	5,230	5,410	0.7
E112 Post-secondary teaching and research assistants	8,050	8,360	0.8
E12 College and other vocational instructors	10,110	10,570	0.9
E121 College and other vocational instructors	10,110	10,570	0.9
E13 Secondary and elementary school teachers and educational counsellors	31,360	32,490	0.7
E131 Secondary school teachers	11,720	12,140	0.7
E132 Elementary school and kindergarten teachers	17,600	18,230	0.7
E133 Educational counsellors	2,050	2,130	0.8
E2 Paralegals, social services workers and occupations in education and religion, n.e.c.	32,290	35,770	2.2
E21 Paralegals, social services workers and occupations in education and religion, n.e.c.	32,290	35,770	2.2
E211 Paralegal and related occupations	3,930	4,310	1.9
E212 Community and social service workers	8,810	9,850	2.4
E213 Employment counsellors	1,150	1,240	1.6
E214 Instructors and teachers of persons with disabilities	310	340	1.7
E215 Other instructors	4,740	4,920	0.7
E216 Other religious occupations	750	790	1.1
E217 Early childhood educators and assistants	12,580	14,300	2.7
F Occupations in art, culture, recreation and sport	54,980	58,720	1.4
F0 Professional occupations in art and culture	24,120	25,700	1.3
F01 Librarians, archivists, conservators and curators	1,430	1,520	1.3
F011 Librarians	1,200	1,280	1.3
F012 Conservators and curators	100	110	1.3

Mainland/Southwest Development Region

Projected Annual Growth Rates in Occupational Demand

	Estimated Employment		Avg Annual % Chng Over 5 Years
	2008	2013	2008 to 2013
F013 Archivists	140	150	0.8
F02 Writing, translating and public relations professionals	8,950	9,620	1.5
F021 Authors and writers	2,960	3,200	1.6
F022 Editors	1,380	1,460	1.2
F023 Journalists	860	920	1.3
F024 Professional occupations in public relations and communications	2,700	2,890	1.4
F025 Translators, terminologists and interpreters	1,010	1,100	1.8
F03 Creative and performing artists	13,690	14,510	1.2
F031 Producers, directors, choreographers and related occupations	3,000	3,200	1.4
F032 Conductors, composers and arrangers	260	280	1.3
F033 Musicians and singers	4,090	4,290	0.9
F034 Dancers	970	1,010	0.8
F035 Actors and comedians	2,830	3,020	1.4
F036 Painters, sculptors and other visual artists	2,550	2,710	1.3
F1 Technical occupations in art, culture, recreation and sport	30,870	33,030	1.4
F11 Technical occupations in libraries, archives, museums and art galleries	1,910	2,020	1.2
F111 Library and archive technicians and assistants	1,560	1,660	1.2
F112 Technical occupations related to museums and art galleries	340	360	1.3
F12 Photographers, graphic arts technicians and technical and co-ordinating occupations in motion pictures, broadcasting and the performing arts	7,070	7,590	1.5
F121 Photographers	1,180	1,300	2.0
F122 Film and video camera operators	670	720	1.4
F123 Graphic arts technicians	350	380	1.4
F124 Broadcast technicians	220	230	1.4
F125 Audio and video recording technicians	1,090	1,170	1.4
F126 Other technical and co-ordinating occupations in motion pictures, broadcasting and the performing arts	2,020	2,160	1.3
F127 Support occupations in motion pictures, broadcasting and the performing arts	1,550	1,660	1.4
F13 Announcers and other performers	1,010	1,080	1.4
F131 Announcers and other broadcasters	690	740	1.4
F132 Other performers	330	350	1.4
F14 Creative designers and craftspersons	11,120	11,970	1.5
F141 Graphic designers and illustrators	6,000	6,430	1.4
F142 Interior designers	1,920	2,090	1.8
F143 Theatre, fashion, exhibit and other creative designers	1,460	1,580	1.6
F144 Artisans and craftspersons	1,680	1,800	1.4
F145 Patternmakers - Textile, leather and fur products	70	70	2.0
F15 Athletes, coaches, referees and related occupations	9,760	10,370	1.2
F151 Athletes	240	260	1.3
F152 Coaches	1,020	1,080	1.0
F153 Sports officials and referees	770	820	1.3
F154 Program leaders and instructors in recreation, sport and fitness	7,730	8,220	1.3
G Sales and service occupations	350,630	374,560	1.4
G0 Sales and service supervisors	10,220	10,910	1.4
G01 Sales and service supervisors	10,220	10,910	1.4
G011 Retail trade supervisors	5,160	5,470	1.2
G012 Food service supervisors	2,890	3,140	1.7

Mainland/Southwest Development Region

Projected Annual Growth Rates in Occupational Demand

	Estimated Employment		Avg Annual % Chng Over 5 Years
	2008	2013	2008 to 2013
G013 Executive housekeepers	270	290	1.7
G014 Dry cleaning and laundry supervisors	50	50	1.2
G015 Cleaning supervisors	780	830	1.2
G016 Other service supervisors	1,060	1,130	1.4
G1 Wholesale, technical, insurance, real estate sales specialists, and retail, wholesale and grain buyers	32,550	35,140	1.6
G11 Sales representatives, wholesale trade	14,370	15,600	1.7
G111 Sales representatives, wholesale trade (non-technical)	14,370	15,610	1.7
G12 Technical sales specialists, wholesale trade	4,940	5,480	2.2
G121 Technical sales specialists, wholesale trade	4,920	5,460	2.2
G13 Insurance and real estate sales occupations and buyers	13,290	14,110	1.2
G131 Insurance agents and brokers	5,970	6,340	1.2
G132 Real estate agents and salespersons	5,230	5,530	1.1
G133 Retail and wholesale buyers	2,020	2,170	1.5
G134 Grain elevator operators	60	60	1.5
G2 Retail salespersons and sales clerks	66,820	70,780	1.2
G21 Retail salespersons and sales clerks	66,810	70,770	1.2
G211 Retail salespersons and sales clerks	66,810	70,770	1.2
G3 Cashiers	26,640	28,340	1.3
G31 Cashiers	26,640	28,340	1.3
G311 Cashiers	26,680	28,390	1.3
G4 Chefs and cooks	23,010	24,950	1.7
G41 Chefs and cooks	23,010	24,940	1.7
G411 Chefs	5,610	6,070	1.7
G412 Cooks	17,390	18,860	1.7
G5 Occupations in food and beverage service	24,000	25,990	1.7
G51 Occupations in food and beverage service	24,000	26,000	1.7
G511 Maitres d'hôtel and hosts/hostesses	2,580	2,790	1.7
G512 Bartenders	2,620	2,830	1.6
G513 Food and beverage servers	18,770	20,340	1.7
G6 Occupations in protective services	18,630	19,460	0.9
G61 Police officers and firefighters	6,330	6,500	0.5
G611 Police officers (except commissioned)	4,240	4,350	0.5
G612 Firefighters	2,110	2,170	0.5
G62 Other occupations in protective service	3,710	3,850	0.7
G621 Sheriffs and bailiffs	370	380	0.8
G622 Correctional service officers	1,060	1,090	0.6
G623 By-law enforcement and other regulatory officers, n.e.c.	520	540	0.8
G624 Other ranks, armed forces	790	810	0.5
G625 Other protective service occupations	980	1,040	1.1
G63 Security guards and related occupations	8,550	9,060	1.2
G631 Security guards and related occupations	8,580	9,100	1.2
G7 Occupations in travel and accommodation, including attendants in recreation and sport	18,990	20,290	1.4
G71 Occupations in travel and accommodation	11,910	12,750	1.4
G711 Travel counsellors	3,870	4,100	1.2
G712 Purser and flight attendants	2,670	2,860	1.4
G713 Airline sales and service agents	2,550	2,730	1.4

Mainland/Southwest Development Region

Projected Annual Growth Rates in Occupational Demand

	Estimated Employment		Avg Annual % Chng Over 5 Years
	2008	2013	2008 to 2013
G714 Ticket agents, cargo service representatives and related clerks (except airline)	650	690	1.4
G715 Hotel front desk clerks	2,190	2,370	1.7
G72 Tour and recreational guides and casino occupations	4,240	4,520	1.3
G721 Tour and travel guides	990	1,050	1.2
G722 Outdoor sport and recreational guides	420	450	1.1
G723 Casino occupations	2,850	3,050	1.4
G73 Other occupations in travel, accommodation, amusement and recreation	2,820	3,010	1.3
G731 Operators and attendants in amusement, recreation and sport	1,870	1,990	1.2
G732 Other attendants in accommodation and travel	970	1,040	1.5
G8 Child care and home support workers	23,560	25,460	1.6
G81 Child care and home support workers	23,560	25,460	1.6
G811 Visiting homemakers, housekeepers and related occupations	7,750	8,720	2.5
G812 Elementary and secondary school teacher assistants	7,260	7,530	0.7
G814 Babysitters, nannies and parents' helpers	8,560	9,220	1.5
G9 Sales and service occupations, n.e.c.	106,260	113,290	1.3
G91 Technical occupations in personal service	6,680	7,000	1.0
G911 Hairstylists and barbers	6,530	6,840	1.0
G912 Funeral directors and embalmers	160	170	0.9
G92 Other occupations in personal service	5,180	5,460	1.1
G921 Image, social and other personal consultants	470	500	1.3
G922 Estheticians, electrologists and related occupations	3,300	3,480	1.0
G923 Pet groomers and animal care workers	1,280	1,350	1.1
G924 Other personal service occupations	110	110	1.3
G93 Cleaners	36,470	38,630	1.2
G931 Light duty cleaners	14,480	15,510	1.4
G932 Specialized cleaners	3,630	3,820	1.0
G933 Janitors, caretakers and building superintendents	18,360	19,310	1.0
G94 Butchers and bakers, retail and wholesale	5,610	5,980	1.3
G941 Butchers, meat cutters and fishmongers, retail and wholesale	1,790	1,900	1.2
G942 Bakers	3,850	4,100	1.3
G96 Food counter attendants, kitchen helpers and related occupations	30,170	32,750	1.7
G961 Food counter attendants, kitchen helpers and related occupations	30,170	32,740	1.7
G97 Other sales and related occupations	17,480	18,520	1.2
G971 Service station attendants	1,950	2,060	1.1
G972 Grocery clerks and store shelf stockers	11,190	11,850	1.2
G973 Other elemental sales occupations	4,300	4,580	1.3
G98 Other elemental service occupations	4,660	4,950	1.3
G981 Dry cleaning and laundry occupations	1,650	1,760	1.3
G982 Ironing, pressing and finishing occupations	380	410	1.4
G983 Other elemental service occupations	2,650	2,810	1.2
H Trades, transport and equipment operators and related occupations	205,720	205,770	0.0
H0 Contractors and supervisors in trades and transportation	11,000	10,570	-0.8
H01 Contractors and supervisors, trades and related workers	10,280	9,800	-0.9
H011 Supervisors, machinists and related occupations	380	410	1.8
H012 Contractors and supervisors, electrical trades and telecommunications occupations	1,140	1,090	-1.0

Mainland/Southwest Development Region

Projected Annual Growth Rates in Occupational Demand

	Estimated Employment		Avg Annual % Chng Over 5 Years
	2008	2013	2008 to 2013
H013 Contractors and supervisors, pipefitting trades	530	500	-1.1
H014 Contractors and supervisors, metal forming, shaping and erecting trades	640	650	0.4
H015 Contractors and supervisors, carpentry trades	1,570	1,450	-1.6
H016 Contractors and supervisors, mechanic trades	990	1,020	0.6
H017 Contractors and supervisors, heavy construction equipment crews	1,560	1,510	-0.7
H018 Supervisors, printing and related occupations	420	360	-2.8
H019 Contractors and supervisors, other construction trades, installers, repairers and servicers	3,040	2,810	-1.5
H02 Supervisors, railway and motor transportation occupations	690	730	1.3
H021 Supervisors, railway transport operations	160	170	1.3
H022 Supervisors, motor transport and other ground transit operators	530	570	1.3
H1 Construction trades	49,620	46,000	-1.5
H11 Plumbers, pipefitters and gas fitters	7,490	6,960	-1.4
H111 Plumbers	5,350	4,920	-1.6
H112 Steamfitters, pipefitters and sprinkler system installers	1,430	1,350	-1.0
H113 Gas fitters	720	690	-0.9
H12 Carpenters and cabinetmakers	19,520	18,290	-1.3
H121 Carpenters	17,390	16,020	-1.6
H122 Cabinetmakers	2,130	2,260	1.2
H13 Masonry and plastering trades	7,610	6,960	-1.7
H131 Bricklayers	1,200	1,110	-1.4
H132 Concrete finishers	1,330	1,230	-1.6
H133 Tilesetters	1,430	1,310	-1.7
H134 Plasterers, drywall installers and finishers and lathers	3,680	3,340	-1.8
H14 Other construction trades	15,000	13,800	-1.6
H141 Roofers and shinglers	2,870	2,610	-1.8
H142 Glaziers	1,410	1,350	-0.9
H143 Insulators	720	660	-1.6
H144 Painters and decorators	7,600	6,970	-1.7
H145 Floor covering installers	2,420	2,240	-1.5
H2 Stationary engineers, power station operators and electrical trades and telecommunications occupations	13,340	13,020	-0.5
H21 Electrical trades and telecommunications occupations	12,390	12,010	-0.6
H211 Electricians (except industrial and power system)	7,330	6,720	-1.7
H212 Industrial electricians	1,640	1,730	1.1
H213 Power system electricians	230	230	0.3
H214 Electrical power line and cable workers	450	440	-0.4
H215 Telecommunications line and cable workers	730	760	0.8
H216 Telecommunications installation and repair workers	1,660	1,760	1.3
H217 Cable television service and maintenance technicians	300	320	0.9
H22 Stationary engineers and power station and system operators	940	1,000	1.2
H221 Stationary engineers and auxiliary equipment operators	810	870	1.4
H222 Power systems and power station operators	140	150	0.3
H3 Machinists, metal forming, shaping and erecting occupations	12,270	12,990	1.2
H31 Machinists and related occupations	2,840	3,120	2.0
H311 Machinists and machining and tooling inspectors	2,540	2,790	2.0
H312 Tool and die makers	310	340	1.9
H32 Metal forming, shaping and erecting trades	9,450	9,890	0.9

Mainland/Southwest Development Region

Projected Annual Growth Rates in Occupational Demand

	Estimated Employment		Avg Annual % Chng Over 5 Years
	2008	2013	2008 to 2013
H321 Sheet metal workers	1,940	1,960	0.2
H322 Boilermakers	200	210	1.3
H323 Structural metal and platework fabricators and fitters	1,520	1,640	1.6
H324 Ironworkers	1,020	1,000	-0.4
H325 Blacksmiths and die setters	-	-	-
H326 Welders and related machine operators	4,770	5,070	1.3
H4 Mechanics	22,450	23,500	0.9
H41 Machinery and transportation equipment mechanics (except motor vehicle)	10,080	10,480	0.8
H411 Construction millwrights and industrial mechanics (except textile)	3,240	3,450	1.3
H412 Heavy-duty equipment mechanics	1,960	2,050	0.9
H413 Refrigeration and air conditioning mechanics	1,500	1,440	-0.8
H414 Railway carmen/women	340	360	1.4
H415 Aircraft mechanics and aircraft inspectors	2,250	2,410	1.5
H416 Machine fitters	180	200	1.6
H417 Textile machinery mechanics and repairers	20	20	1.4
H418 Elevator constructors and mechanics	540	490	-1.6
H42 Automotive service technicians	10,580	11,130	1.1
H421 Automotive service technicians, truck and bus mechanics and mechanical repairers	8,410	8,860	1.1
H422 Motor vehicle body repairers	2,160	2,270	1.0
H43 Other mechanics	1,820	1,920	1.0
H431 Oil and solid fuel heating mechanics	60	60	-0.5
H432 Electric appliance servicers and repairers	710	740	0.9
H433 Electrical mechanics	230	240	0.8
H434 Motorcycle and other related mechanics	280	300	1.5
H435 Other small engine and equipment mechanics	520	560	1.3
H5 Other trades, n.e.c.	10,600	10,640	0.1
H51 Upholsterers, tailors, shoe repairers, jewellers and related occupations	3,060	3,280	1.5
H511 Upholsterers	460	490	1.2
H512 Tailors, dressmakers, furriers and milliners	1,950	2,100	1.6
H513 Shoe repairers and shoemakers	180	180	1.1
H514 Jewellers, watch repairers and related occupations	460	490	1.4
H52 Printing press operators, commercial divers and other trades and related occupations, n.e.c.	2,310	2,130	-1.5
H521 Printing press operators	1,480	1,250	-3.1
H522 Commercial divers	110	110	0.6
H523 Other trades and related occupations	750	800	1.4
H53 Other installers, repairers and servicers	5,230	5,230	0.0
H531 Residential and commercial installers and servicers	3,150	3,040	-0.7
H532 Waterworks and gas maintenance workers	300	300	0.0
H533 Automotive mechanical installers and servicers	680	720	1.1
H534 Pest controllers and fumigators	200	210	1.2
H535 Other repairers and servicers	910	970	1.2
H6 Heavy equipment and crane operators, including drillers	6,370	6,100	-0.9
H61 Heavy equipment operators	5,260	5,030	-0.9
H611 Heavy equipment operators (except crane)	4,390	4,120	-1.2
H612 Public works maintenance equipment operators	870	920	1.0
H62 Crane operators, drillers and blasters	1,080	1,030	-0.9

Mainland/Southwest Development Region

Projected Annual Growth Rates in Occupational Demand

	Estimated Employment		Avg Annual % Chng Over 5 Years
	2008	2013	2008 to 2013
H621 Crane operators	840	810	-0.7
H622 Drillers and blasters - Surface mining, quarrying and construction	190	180	-1.8
H623 Water well drillers	50	40	-2.1
H7 Transportation equipment operators and related workers, excluding labourers	40,130	42,760	1.3
H71 Motor vehicle and transit drivers	36,230	38,600	1.3
H711 Truck drivers	18,720	19,840	1.2
H712 Bus drivers and subway and other transit operators	5,380	5,750	1.4
H713 Taxi and limousine drivers and chauffeurs	4,010	4,290	1.4
H714 Delivery and courier service drivers	8,180	8,770	1.4
H72 Train crew operating occupations	860	920	1.4
H721 Railway and yard locomotive engineers	430	460	1.4
H722 Railway conductors and brakemen/women	430	460	1.4
H73 Other transport equipment operators and related workers	3,000	3,200	1.3
H731 Railway yard workers	170	180	1.4
H732 Railway track maintenance workers	200	210	1.3
H733 Deck crew, water transport	740	780	1.1
H734 Engine room crew, water transport	20	30	1.2
H735 Lock and cable ferry operators and related occupations	270	280	1.3
H736 Boat operators	210	230	1.5
H737 Air transport ramp attendants	1,420	1,520	1.4
H8 Trades helpers, construction and transportation labourers and related occupations	39,950	40,200	0.1
H81 Longshore workers and material handlers	18,990	20,400	1.5
H811 Longshore workers	2,280	2,430	1.3
H812 Material handlers	16,720	17,980	1.5
H82 Trades helpers and labourers	18,880	17,650	-1.3
H821 Construction trades helpers and labourers	18,060	16,810	-1.4
H822 Other trades helpers and labourers	860	880	0.5
H83 Public works and other labourers, n.e.c.	2,090	2,170	0.8
H831 Public works and maintenance labourers	1,750	1,810	0.7
H832 Railway and motor transport labourers	330	350	1.2
I Occupations unique to primary industry	29,980	31,320	0.9
I0 Occupations unique to agriculture, excluding labourers	14,540	15,110	0.8
I01 Contractors, operators and supervisors in agriculture, horticulture and aquaculture	7,500	7,780	0.7
I011 Farmers and farm managers	4,970	5,140	0.7
I012 Agricultural and related service contractors and managers	30	30	1.1
I013 Farm supervisors and specialized livestock workers	450	480	0.9
I014 Nursery and greenhouse operators and managers	400	410	0.9
I015 Landscaping and grounds maintenance contractors and managers	750	770	0.7
I016 Supervisors, landscape and horticulture	760	800	0.9
I017 Aquaculture operators and managers	100	110	0.6
I02 Agriculture and horticulture workers	7,060	7,340	0.8
I021 General farm workers	4,720	4,890	0.7
I022 Nursery and greenhouse workers	2,360	2,460	0.9
I1 Occupations unique to forestry operations, mining, oil and gas extraction and fishing, excluding labourers	2,220	2,320	0.9
I11 Supervisors, logging and forestry	170	190	2.5
I111 Supervisors, logging and forestry	170	190	2.5

Mainland/Southwest Development Region

Projected Annual Growth Rates in Occupational Demand

	Estimated Employment		Avg Annual % Chng Over 5 Years
	2008	2013	2008 to 2013
I12 Supervisors, mining, oil and gas	180	180	-0.3
I121 Supervisors, mining and quarrying	120	120	-0.9
I122 Supervisors, oil and gas drilling and service	80	80	0.6
I13 Underground miners, oil and gas drillers and related workers	310	300	-0.7
I131 Underground production and development miners	180	170	-1.3
I132 Oil and gas well drillers, servicers, testers and related workers	130	130	0.0
I14 Mine service workers and operators in oil and gas drilling	130	130	0.2
I141 Underground mine service and support workers	50	50	0.3
I142 Oil and gas well drilling workers and services operators	90	90	0.2
I15 Logging machinery operators	320	370	3.0
I151 Logging machinery operators	320	360	3.0
I16 Logging and forestry workers	410	450	1.8
I161 Chain saw and skidder operators	250	280	2.3
I162 Silviculture and forestry workers	170	170	1.1
I17 Fishing vessel masters and skippers and fishermen/women	510	520	0.2
I171 Fishing masters and officers	20	20	0.4
I172 Fishing vessel skippers and fishermen/women	500	500	0.2
I18 Other fishing and trapping occupations	150	160	0.8
I181 Fishing vessel deckhands	140	140	0.6
I182 Trappers and hunters	-	-	-
I2 Primary production labourers	13,210	13,880	1.0
I21 Primary production labourers	13,240	13,910	1.0
I211 Harvesting labourers	2,320	2,410	0.8
I212 Landscaping and grounds maintenance labourers	9,820	10,330	1.0
I213 Aquaculture and marine harvest labourers	150	150	0.7
I214 Mine labourers	110	100	-1.5
I215 Oil and gas drilling, servicing and related labourers	190	190	0.2
I216 Logging and forestry labourers	650	740	2.5
J Occupations unique to processing, manufacturing and utilities	54,900	59,050	1.5
J0 Supervisors in manufacturing	3,210	3,490	1.8
J01 Supervisors, processing occupations	2,190	2,380	1.7
J011 Supervisors, mineral and metal processing	270	300	1.9
J012 Supervisors, petroleum, gas and chemical processing and utilities	360	380	1.1
J013 Supervisors, food, beverage and tobacco processing	720	760	1.4
J014 Supervisors, plastic and rubber products manufacturing	250	280	2.5
J015 Supervisors, forest products processing	540	600	2.1
J016 Supervisors, textile processing	50	50	1.9
J02 Supervisors, assembly and fabrication	1,010	1,110	1.9
J021 Supervisors, motor vehicle assembling	50	50	1.7
J022 Supervisors, electronics manufacturing	90	100	1.7
J023 Supervisors, electrical products manufacturing	120	130	1.5
J024 Supervisors, furniture and fixtures manufacturing	120	140	1.9
J025 Supervisors, fabric, fur and leather products manufacturing	130	140	2.0
J026 Supervisors, other mechanical and metal products manufacturing	160	180	2.1
J027 Supervisors, other products manufacturing and assembly	320	360	2.1
J1 Machine operators in manufacturing	23,620	25,200	1.3
J11 Central control and process operators in manufacturing and processing	660	710	1.6

Mainland/Southwest Development Region

Projected Annual Growth Rates in Occupational Demand

	Estimated Employment		Avg Annual % Chng Over 5 Years
	2008	2013	2008 to 2013
J111 Central control and process operators, mineral and metal processing	130	140	1.7
J112 Petroleum, gas and chemical process operators	370	410	1.9
J113 Pulping control operators	30	30	0.7
J114 Papermaking and coating control operators	150	160	0.7
J12 Machine operators and related workers in metal and mineral products processing	1,620	1,760	1.7
J121 Machine operators, mineral and metal processing	250	260	1.2
J122 Foundry workers	220	240	2.0
J123 Glass forming and finishing machine operators and glass cutters	550	610	1.9
J124 Concrete, clay and stone forming operators	400	430	1.5
J125 Inspectors and testers, mineral and metal processing	220	230	1.3
J13 Machine operators and related workers in chemical, plastic and rubber processing	1,730	1,900	2.0
J131 Chemical plant machine operators	280	310	2.3
J132 Plastics processing machine operators	910	1,020	2.4
J133 Rubber processing machine operators and related workers	200	230	2.0
J134 Water and waste plant operators	340	350	0.5
J14 Machine operators and related workers in pulp and paper production and wood processing	3,230	3,560	2.0
J141 Sawmill machine operators	1,110	1,260	2.8
J142 Pulp mill machine operators	140	150	0.9
J143 Papermaking and finishing machine operators	280	290	0.5
J144 Other wood processing machine operators	500	570	2.4
J145 Paper converting machine operators	530	550	0.8
J146 Lumber graders and other wood processing inspectors and graders	620	700	2.6
J15 Machine operators and related workers in textile processing	690	740	1.6
J151 Textile fibre and yarn preparation machine operators	20	20	2.1
J152 Weavers, knitters and other fabric-making occupations	280	300	1.7
J153 Textile dyeing and finishing machine operators	190	200	1.1
J154 Textile inspectors, graders and samplers	200	220	1.9
J16 Machine operators and related workers in fabric, fur and leather products manufacturing	4,590	5,020	1.9
J161 Sewing machine operators	3,980	4,350	1.9
J162 Fabric, fur and leather cutters	500	540	1.7
J163 Hide and pelt processing workers	-	-	-
J164 Inspectors and testers, fabric, fur and leather products manufacturing	120	130	2.0
J17 Machine operators and related workers in food, beverage and tobacco processing	5,080	5,410	1.3
J171 Process control and machine operators, food and beverage processing	1,940	2,060	1.3
J172 Industrial butchers and meat cutters, poultry preparers and related workers	1,080	1,140	1.3
J173 Fish plant workers	1,560	1,660	1.3
J174 Tobacco processing machine operators	-	-	-
J175 Testers and graders, food and beverage processing	500	540	1.3
J18 Printing machine operators and related occupations	3,110	2,880	-1.4
J181 Printing machine operators	900	840	-1.2
J182 Camera, platemaking and other pre-press occupations	470	390	-3.2
J183 Binding and finishing machine operators	730	570	-4.3
J184 Photographic and film processors	1,000	1,060	1.2
J19 Machining, metalworking, woodworking and related machine operators	2,900	3,210	2.1
J191 Machining tool operators	600	660	2.2
J192 Forging machine operators	50	50	2.3

Mainland/Southwest Development Region

Projected Annual Growth Rates in Occupational Demand

	Estimated Employment		Avg Annual % Chng Over 5 Years
	2008	2013	2008 to 2013
J193 Woodworking machine operators	830	910	1.9
J194 Metalworking machine operators	1,060	1,180	2.2
J196 Other metal products machine operators	280	300	1.8
J197 Other products machine operators	140	150	1.7
J2 Assemblers in manufacturing	11,220	12,280	1.9
J21 Mechanical, electrical and electronics assemblers	3,700	4,030	1.8
J211 Aircraft assemblers and aircraft assembly inspectors	110	120	1.7
J212 Motor vehicle assemblers, inspectors and testers	690	740	1.6
J213 Electronics assemblers, fabricators, inspectors and testers	1,370	1,500	1.8
J214 Assemblers and inspectors, electrical appliance, apparatus and equipment manufacturing	660	730	1.8
J215 Assemblers, fabricators and inspectors, industrial electrical motors and transformers	100	110	1.7
J216 Mechanical assemblers and inspectors	460	510	2.1
J217 Machine operators and inspectors, electrical apparatus manufacturing	320	350	1.7
J22 Other assembly and related occupations	7,510	8,240	1.9
J221 Boat assemblers and inspectors	570	610	1.4
J222 Furniture and fixture assemblers and inspectors	2,270	2,490	1.9
J223 Other wood products assemblers and inspectors	1,090	1,220	2.5
J224 Furniture finishers and refinishers	620	660	1.4
J225 Plastic products assemblers, finishers and inspectors	840	950	2.6
J226 Painters and coaters, industrial	830	890	1.5
J227 Plating, metal spraying and related operators	140	160	2.2
J228 Other assemblers and inspectors	1,190	1,300	1.8
J3 Labourers in processing, manufacturing and utilities	16,900	18,110	1.4
J31 Labourers in processing, manufacturing and utilities	16,910	18,120	1.4
J311 Labourers in mineral and metal processing	550	600	1.9
J312 Labourers in metal fabrication	740	820	2.1
J313 Labourers in chemical products processing and utilities	430	470	2.1
J314 Labourers in wood, pulp and paper processing	2,490	2,780	2.3
J315 Labourers in rubber and plastic products manufacturing	690	780	2.6
J316 Labourers in textile processing	370	410	1.8
J317 Labourers in food, beverage and tobacco processing	6,040	6,480	1.4
J318 Labourers in fish processing	940	1,000	1.3
J319 Other labourers in processing, manufacturing and utilities	4,620	4,740	0.5