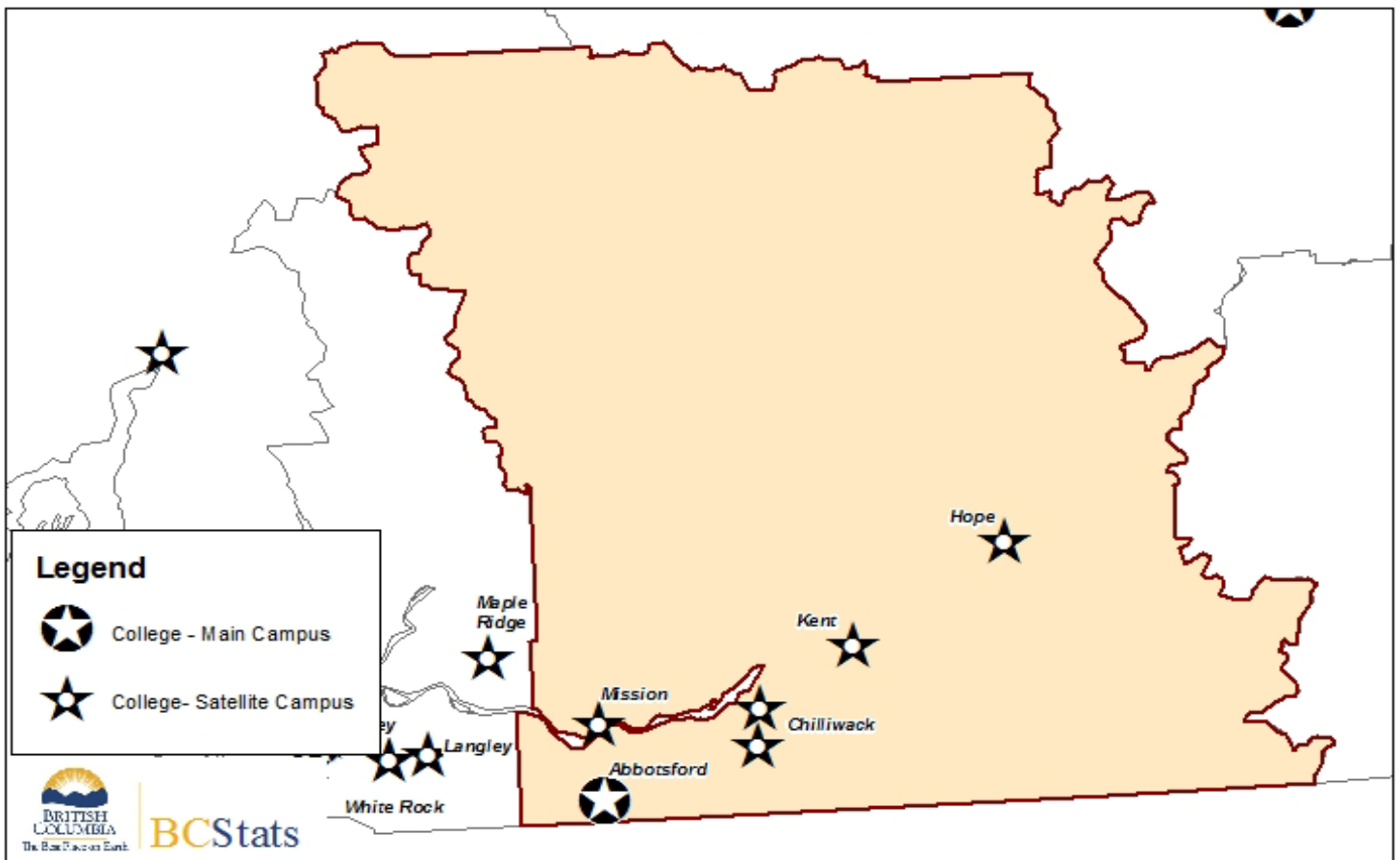


British Columbia: Regional Employment Projection Model
INDUSTRY AND OCCUPATION PROJECTIONS: 2008 to 2013
Fraser Valley College Region



Geographic Location of Population				
Major Cities	Population 2006 Census	% of Region	Land Area	Population Density
			<i>Sq Km</i>	<i>Persons per Sq Km</i>
Abbotsford, C	123,864	48.2	359.4	344.7
Chilliwack, C	69,217	26.9	260.2	266.0
Mission, DM	34,505	13.4	225.8	152.8
Hope, DM	6,185	2.4	41.4	149.3
Kent, DM	4,738	1.8	166.5	28.5
Harrison Hot Springs, VL	1,573	0.6	5.5	287.6
Rest of region	16,932	6.6	11,120.7	1.5
Total Region	257,014	100.0	12,179.4	21.1
Region as % of BC	6.2		1.3	
Youth age 15-29	49,620			
Youth in Region as % of BC	6.3			

Note to Users

All assumptions relating to employment are based on past conditions, modified wherever possible to take into consideration future changes. The resulting employment projections are not necessarily what will be, but rather what could be, given the realization of these conditions. It is certainly possible that unforeseen changes in factors such as economic development, government policy, or land use and zoning will affect future employment. Consequently, the projections should only be regarded as one possible scenario on the future size and distribution of the workforce.

It is important for users to understand that the same set of industries and occupations are reported for each of the 12 College Regions, regardless of the importance of these industries to any particular regional economy. Some of these industries, while significant to the province overall, may have a very small presence in a particular region. For example, the Beverage Manufacturing industry could show up as the highest growth rate for each region of the province because the wine industry is expected to grow, but this would mean the Okanagan College Region would gain hundreds of jobs while the Northwest would gain 5 to 10 jobs at the most. For this reason, growth rates should be viewed in the context of the size of the occupational or industry grouping to clarify the number of jobs being created or lost and the potential impact the change would have on the local economy.

For information on the Regional Districts contained in the College Regions, see [Appendix 3: REGIONAL DISTRICT TO COLLEGE REGION CONVERSION FOR REPM](#).

The December 2008 version of the Major Projects Inventory was used in the development of the employment projections for the 2008-2013 version of the REPM. A full listing of all the Major Projects under construction or at the proposal stage can be found at http://www.bcstats.gov.bc.ca/pubs/pr_mproj.asp

Regional Employment Projection Model (REPM)

Contents

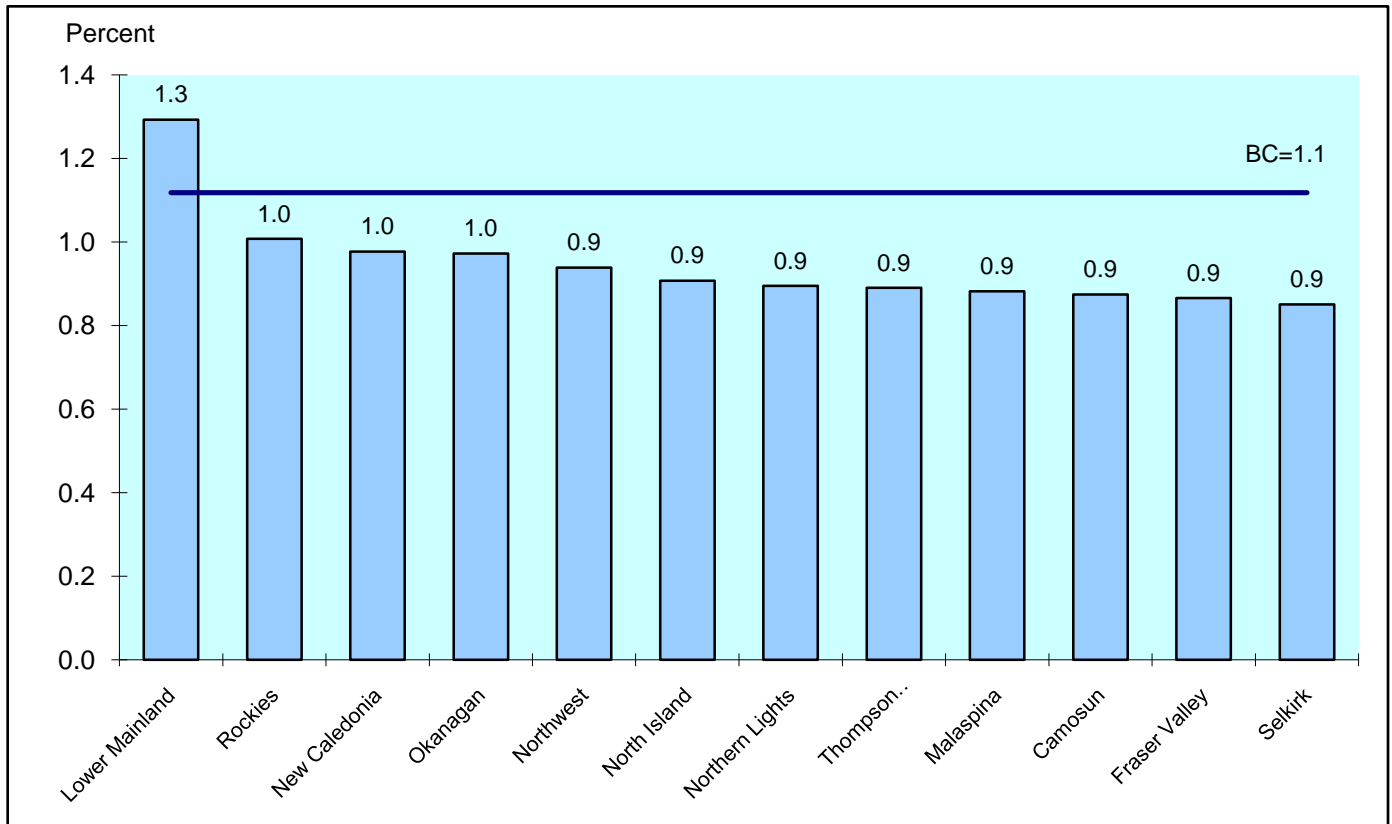
1. Projected Annual Growth in Employment Demand by College Region
2. Projected Annual Growth in Employment Demand. Comparison between Industries
3. Industrial Structure Compared with BC. Percent Share of Employment by Industry
4. Projected Annual Growth in Employment Demand. Comparison between Occupations
5. Occupational Structure Compared with BC. Percent Share of Employment by Occupation
6. Projected Annual Growth Rates in Occupational Demand, 2-digit occupation

Appendices

1. Summary of the Methodology for the BC REPM
2. COPS Industry Conversion for REPM
3. Regional District to College Region Conversion for REPM
4. Projected Annual Growth Rates in Occupational Demand (3-digit)
5. Projected Annual Growth Rates in Occupational Demand (4-digit)

Funding for this project was made possible through the Labour Market Information initiative under the Canada-British Columbia Labour Market Agreement (LMA), which is administered for B.C. by the Ministry of Advanced Education and Labour Market Development.

Projected Annual Growth in Employment Demand by College Region*



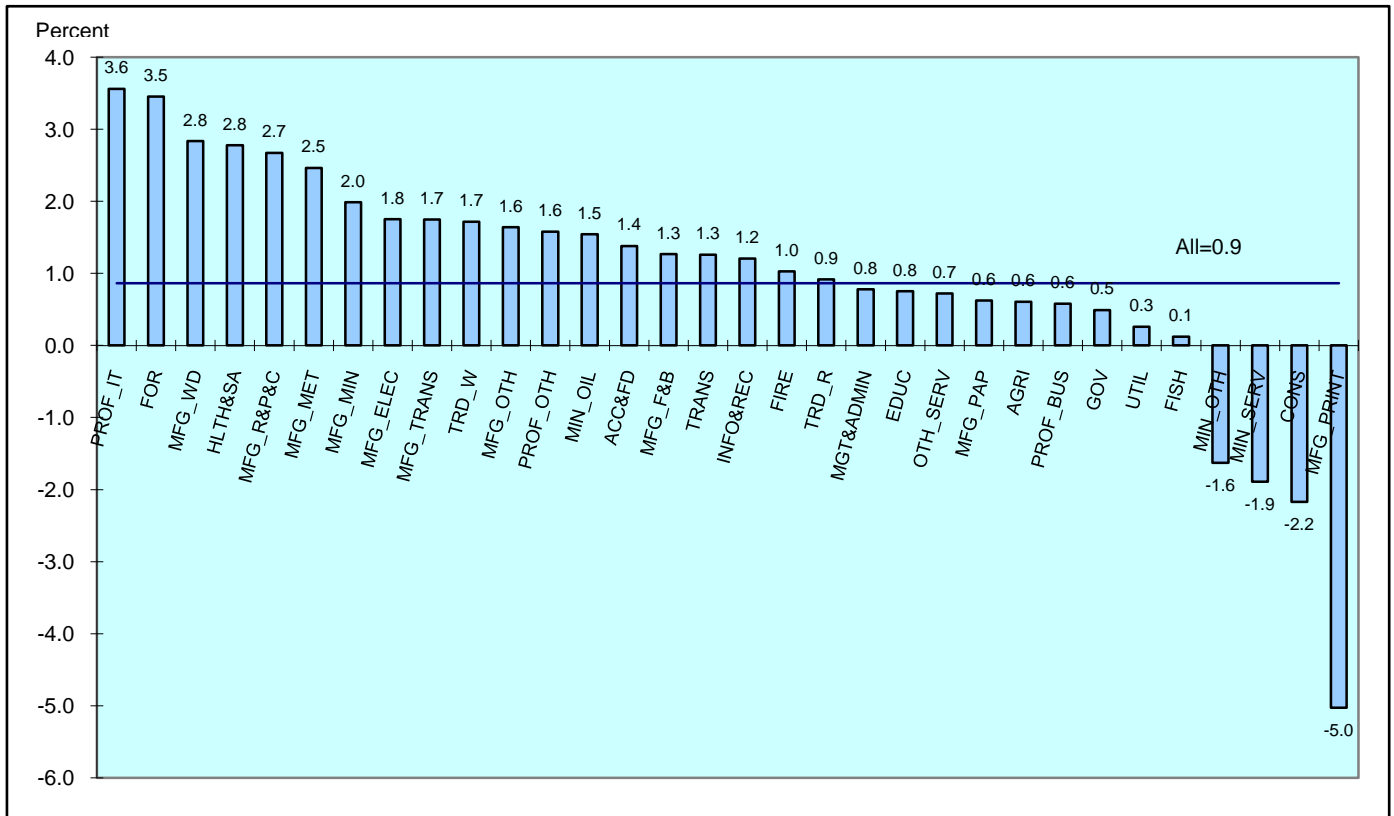
<u>College Region*</u>	<u>Estimated Employment</u>		<u>Avg Annual %</u>
	<u>2008</u>	<u>2013</u>	<u>Chng Over 5</u>
			<u>Years</u>
			<u>2008 to 2013</u>
Camosun	198,090	206,750	0.9
Fraser Valley	135,090	140,940	0.9
Lower Mainland	1,249,300	1,330,070	1.3
Malaspina	111,810	116,750	0.9
New Caledonia	76,330	80,060	1.0
North Island	76,880	80,370	0.9
Northern Lights	44,800	46,810	0.9
Northwest	38,710	40,530	0.9
Okanagan	202,660	212,520	1.0
Rockies	45,290	47,570	1.0
Selkirk	41,410	43,170	0.9
Thompson Rivers	93,310	97,470	0.9
Total	2,313,700	2,443,000	1.1

* See Appendix 3 for details on the Regional Districts included in the College Regions.

Fraser Valley College Region

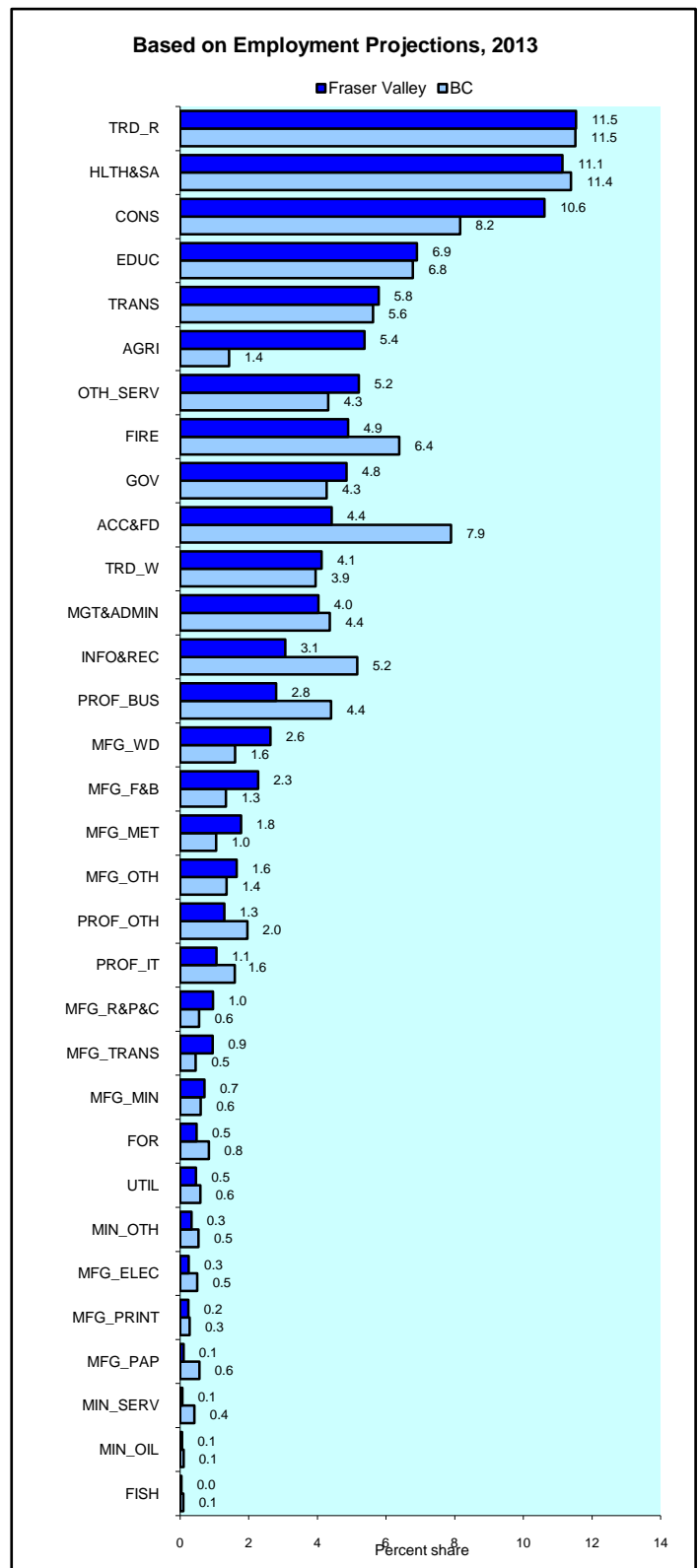
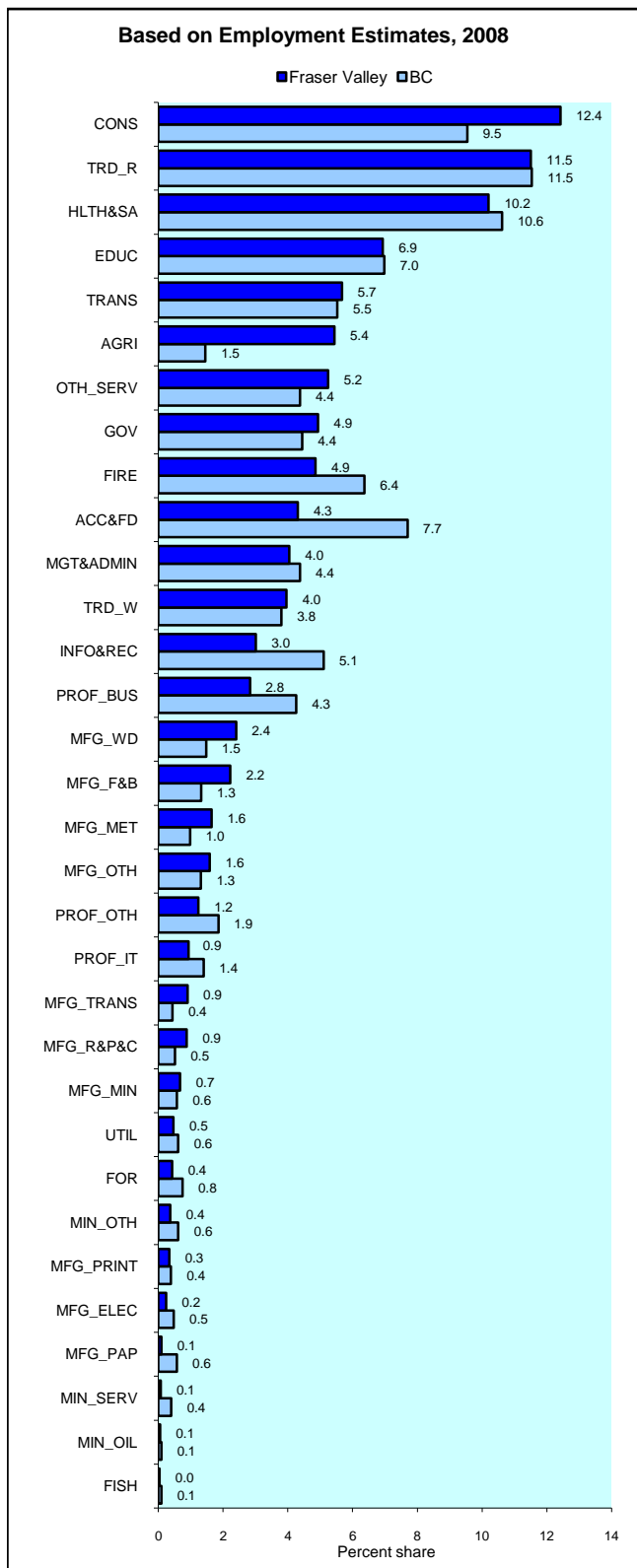
Projected Annual Growth in Employment Demand

Comparison Between Industries



	Avg Annual % Chng Over 5 Years				Avg Annual % Chng Over 5 Years		
	Estimated Employment 2008	Estimated Employment 2013	2008 to 2013		Estimated Employment 2008	Estimated Employment 2013	2008 to 2013
Goods Producing Ind				Service Producing Ind.			
Agriculture	7,350	7,570	0.6	Trade--Wholesale	5,350	5,810	1.7
Forestry	580	680	3.5	Trade--Retail	15,550	16,260	0.9
Fishing, Hunting, & Trapping	50	50	0.1	Transportation	7,670	8,150	1.3
Oil & Gas	70	80	1.5	Finance, Insurance, R.E.	6,560	6,900	1.0
Mining (non Oil & Gas)	500	460	-1.6	Prof--Bus Services	3,830	3,940	0.6
Services to Mining	100	90	-1.9	Prof--Computer Systems	1,270	1,490	3.6
Utilities	640	650	0.3	Prof--Other Services	1,680	1,810	1.6
Construction	16,780	14,960	-2.2	Management/Admin/Other Supp	5,470	5,680	0.8
Mfg--Food & Beverages	3,010	3,200	1.3	Education	9,370	9,720	0.8
Mfg--Wood Products	3,250	3,710	2.8	Health & Social Assist.	13,780	15,700	2.8
Mfg--Paper Products	140	140	0.6	Information, Culture, Rec	4,070	4,310	1.2
Mfg--Printing	460	340	-5.0	Accom & Food Services	5,820	6,220	1.4
Mfg--Rubber, Plas. Chem	1,180	1,340	2.7	Services--other	7,080	7,340	0.7
Mfg--Mineral Products	910	1,000	2.0	Government	6,670	6,830	0.5
Mfg--Metal Fab & Machinery	2,230	2,500	2.5	Total Service Producing	94,150	100,160	1.3
Mfg--Comp, Electronic, Elect	330	360	1.8	Total, all industries	135,090	140,940	0.9
Mfg--Transportation Eq.	1,220	1,330	1.7				
Mfg--Other	2,150	2,330	1.6				
Total Goods Producing	40,950	40,790	-0.1				

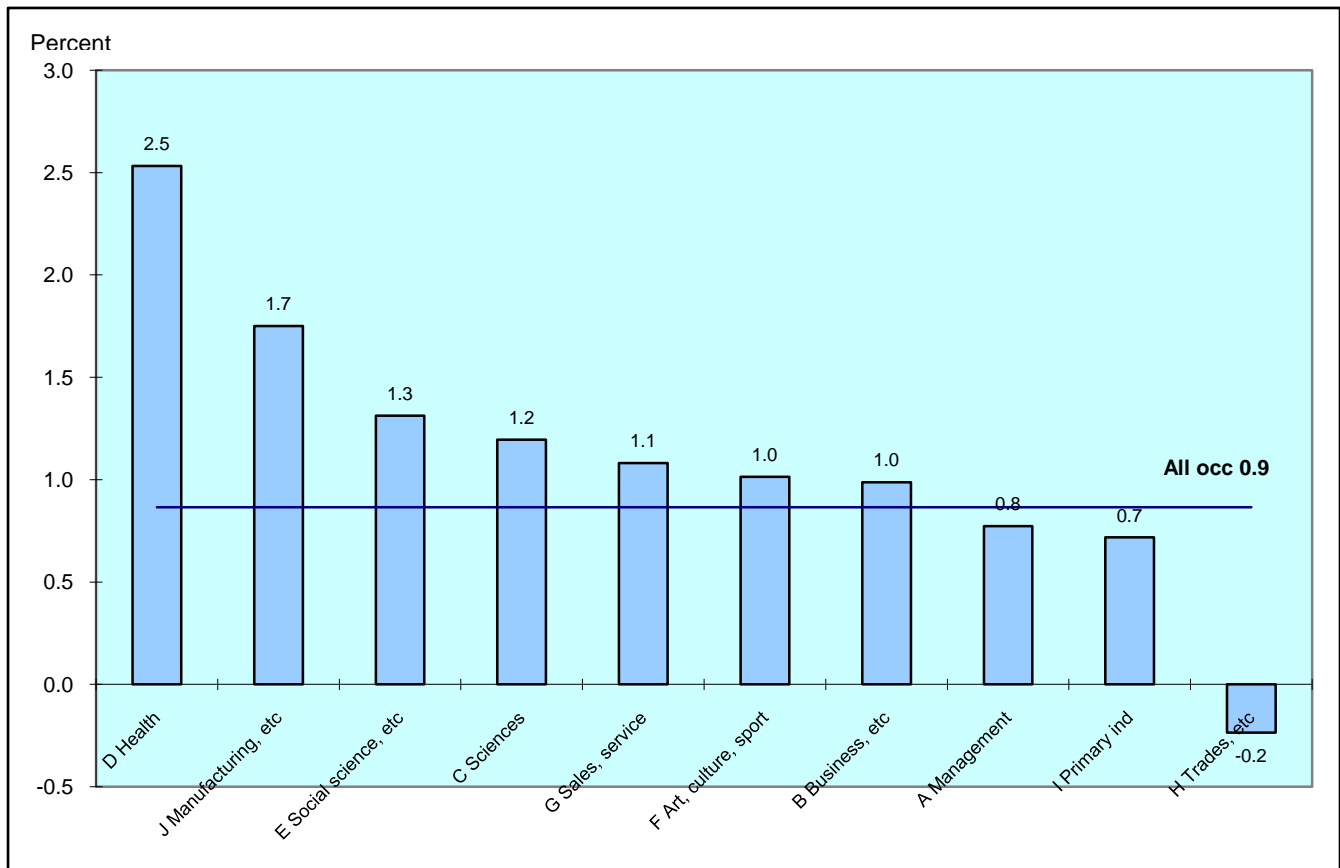
Fraser Valley College Region Industrial Structure Compared with BC Percent Share of Employment by Industry



Fraser Valley College Region

Projected Annual Growth in Employment Demand

Comparison Between Occupations

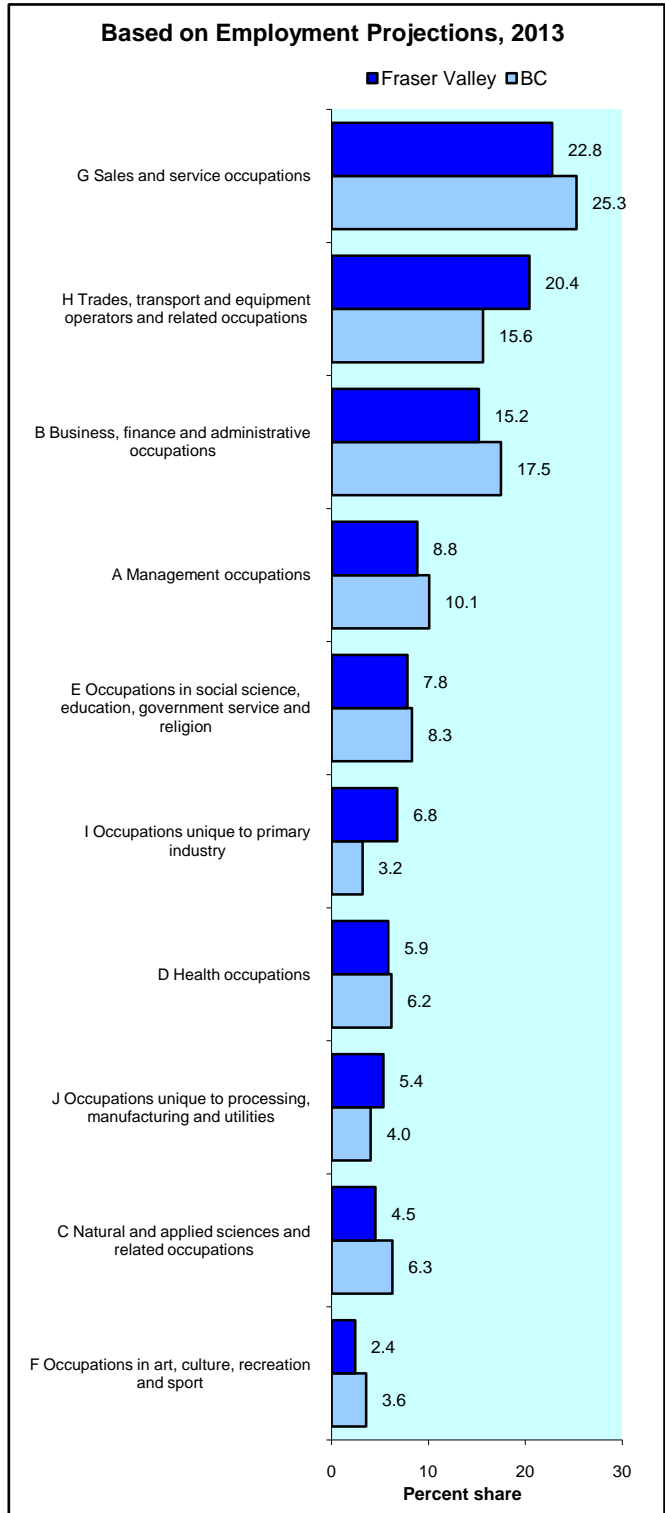
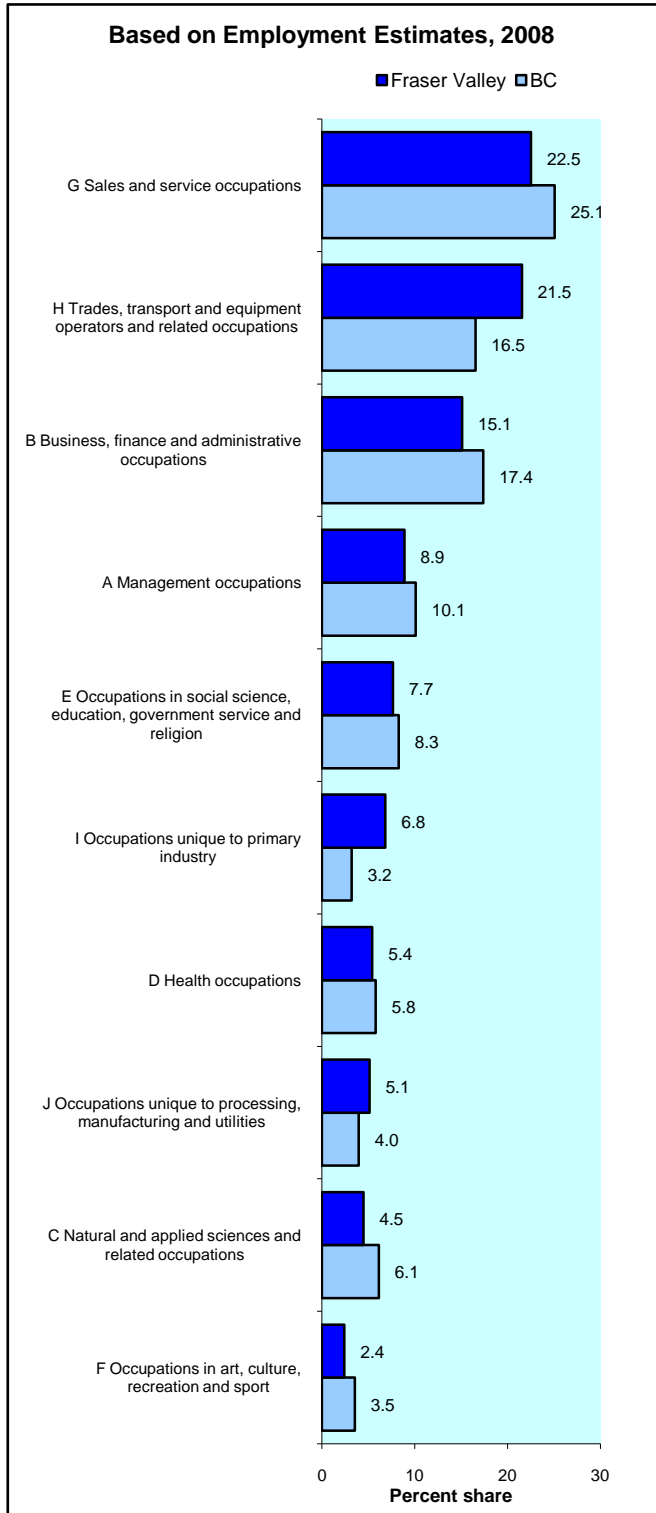


	Estimated Employment		Avg Annual % Chng Over 5 Years
	2008	2013	2008 to 2013
All occupations	135,090	140,940	0.9
A Management occupations	12,000	12,460	0.8
B Business finance and administrative occupations	20,410	21,420	1.0
C Natural and applied sciences and related occupations	6,040	6,400	1.2
D Health occupations	7,330	8,250	2.5
E Occupations in social science, education, government serv, & religion	10,360	11,040	1.3
F Occupations in art culture recreation and sport	3,260	3,430	1.0
G Sales and service occupations	30,430	32,080	1.1
H Trades transport and equipment operators and related occupations	29,100	28,760	-0.2
I Occupations unique to primary industry	9,240	9,570	0.7
J Occupations unique to processing manufacturing and utilities	6,940	7,540	1.7

Fraser Valley College Region

Occupational Structure Compared with BC

Percent Share of Employment by Occupation



Fraser Valley College Region

Projected Annual Growth Rates in Occupational Demand

	Estimated Employment		Avg Annual % Chng Over 5 Years
	<u>2008</u>	<u>2013</u>	<u>2008 to 2013</u>
	All occupations	135,090	140,940
A0 Senior management occupations	1,020	1,070	0.9
A1 Specialist managers	2,170	2,320	1.3
A2 Managers in retail trade food and accommodation services	4,040	4,250	1.0
A3 Other managers n.e.c.	4,760	4,820	0.3
B0 Professional occupations in business and finance	1,990	2,090	1.0
B1 Finance and insurance administration occupations	2,470	2,550	0.7
B2 Secretaries	2,350	2,430	0.7
B3 Administrative and regulatory occupations	2,610	2,720	0.9
B4 Clerical supervisors	500	530	1.1
B5 Clerical occupations	10,480	11,090	1.2
C0 Professional occupations in natural and applied sciences	2,290	2,450	1.4
C1 Technical occupations related to natural and applied sciences	3,750	3,950	1.1
D0 Professional occupations in health	1,170	1,310	2.4
D1 Nurse supervisors and registered nurses	2,130	2,420	2.7
D2 Technical and related occupations in health	1,820	2,040	2.4
D3 Assisting occupations in support of health services	2,210	2,490	2.6
E0 Judges, lawyers, psychologists, social workers, ministers of religion & policy/program officers	2,350	2,510	1.3
E1 Teachers and professors	4,860	5,050	0.8
E2 Paralegals, social services workers & occup. in educ. & religion n.e.c.	3,150	3,480	2.1
F0 Professional occupations in art and culture	1,090	1,150	1.0
F1 Technical occupations in art, culture, recreation and sport	2,170	2,280	1.0
G0 Sales and service supervisors	900	960	1.1
G1 Wholesale, technical, insurance, real estate sales specialists & retail, wholesale and grain buyers	2,450	2,600	1.3
G2 Retail salespersons and sales clerks	6,000	6,280	0.9
G3 Cashiers	2,500	2,630	1.0
G4 Chefs and cooks	1,390	1,490	1.4
G5 Occupations in food and beverage service	1,280	1,370	1.4
G6 Occupations in protective services	1,730	1,780	0.6
G7 Occup. in travel & accommodation incl. attendants in recreation & sport	1,100	1,160	1.1
G8 Childcare and home support workers	2,810	3,010	1.4
G9 Sales and service occupations n.e.c.	10,280	10,810	1.0
H0 Contractors and supervisors in trades and transportation	1,490	1,420	-0.9
H1 Construction trades	6,950	6,390	-1.6
H2 Stationary engineers, power stn operators & electrical trades & telecom.	1,720	1,650	-0.8
H3 Machinists, metal forming, shaping and erecting occupations	1,860	1,960	1.0
H4 Mechanics	3,570	3,720	0.8
H5 Other trades n.e.c.	1,380	1,380	0.1
H6 Heavy equipment and crane operators including drillers	1,850	1,740	-1.2
H7 Transport equipment operators & related workers, excl. labourers	5,540	5,830	1.0
H8 Trades helpers, construction and transport labourers & related	4,740	4,660	-0.3
I0 Occupations unique to agriculture, excluding labourers	6,120	6,310	0.6

Fraser Valley College Region

Projected Annual Growth Rates in Occupational Demand

	Estimated Employment		Avg Annual % Chng Over 5 Years
	<u>2008</u>	<u>2013</u>	<u>2008 to 2013</u>
I1 Occup. unique to forestry ops, mining, oil & gas extraction, fishing excl. labourers	690	730	1.2
I2 Primary production labourers	2,430	2,520	0.8
J0 Supervisors in manufacturing	440	490	2.0
J1 Machine operators in manufacturing	3,000	3,230	1.6
J2 Assemblers in manufacturing	1,220	1,330	1.9
J3 Labourers in processing, manufacturing and utilities	2,280	2,490	1.8

Appendix 1

Summary of Methodology for the British Columbia Regional Employment Projection Model (REPM)

Summary of Methodology for the British Columbia Regional Employment Projection Model (REPM)

Overview

The methodology used in the model is based on previous work on community dependencies carried out by BC Stats. The fundamental premise is that the economy of a region can be represented by income flows that can be classified as “basic” (or driver) and “non-basic” (or induced) depending on the source of the income. Basic income is the result of employment income generated from “basic jobs” plus investment income.

Included among basic jobs are those that are financed from resources emanating from outside the region. These jobs are labelled as “direct jobs” and are found in industries that export their product internationally, nationally or to other regions within B.C. Typically, export industries are in the goods producing sector, e.g., the primary and manufacturing industries. However, with globalization, certain industries in the service producing sector are increasingly exporting their products; examples of this would be port facilities (categorized in the Water Transport industry), the Financial and Insurance industries, and High Technology Business Service industries (such as Engineering), etc. As well, the metropolitan regions provide retail and wholesale trade services to the outlying regions of B.C. and many local economies provide tourism services such as accommodation, food, and recreation services to residents from other regions (both inside and outside the province).

Another less obvious component of direct jobs are those in the public sector. Education, health and government jobs are generated through tax revenues from the Federal or Provincial governments so those industries rely on general tax revenues coming from outside the region¹.

The other component of basic jobs is classified as “indirect jobs”. The model calculates indirect employment effects from employment changes in direct jobs. For example, when direct jobs are created in a local sawmill, indirect jobs will be created in the “upstream” industries that supply goods and services that go into the production of lumber such as the logging industry, the equipment manufacturing industry, etc., and in the “downstream” industries that get the lumber to market such as the transportation industry, and the wholesale trade industry, etc. The model calculates these indirect jobs using multipliers based on inter-industry linkages from the British Columbia Input-Output Model. The sum of the direct jobs and the indirect jobs are labelled basic jobs. The wages and salaries earned from these basic jobs are the major component of basic income.

The other component of basic income is principally investment income and transfer payments which are assumed to come from outside the local community. Private pensions comprise a large percent of investment income, while Canada Pension Plan and Old Age Security payments form a large percent of transfer payments. Therefore, the growth in the senior population is used as an indicator of changes in this non-salary/non-wage component of basic income.

¹ For the purpose of the model, tax payments are treated as an income flow-out of the regional economy and are deducted from total income so are not connected with any particular industry.

Up to this point, the model has calculated the number of basic jobs by industry and the total basic income of the local region. The next step is to calculate the number of jobs created as a result of the expenditure of this basic income by the local population on household goods and services such as retail trades, restaurants, transportation, residential construction, etc. These induced jobs are called “non-basic jobs” and are calculated using a multiplier based on an income to non-basic jobs ratio derived from the British Columbia Input-Output Model. The final result is a count of the number of non-basic jobs by industry which is then added to the basic jobs to derive total jobs by industry by region.

The final component of the model is to convert the industry employment levels into occupation employment levels. To this end, fixed occupation-to-industry ratios, based on the 2006 Census of Canada data, are applied. Three different ratio structures are used: one for the Vancouver Census Metropolitan Area, one for the Victoria Census Metropolitan Area, and one for the “Rest of Province”.

Data Sources

The current version of the model is benchmarked to the 2006 Census employment by Regional District (RD), and estimates are projected forward to the most up-to-date annual employment data from the Labour Force Survey (LFS). The growth rates for the direct industries from the LFS at the provincial level are used to project growth down to the RD level and then the sub-provincial growth rates are refined using standard variables that indicate differential growth between the regions. The population estimates and projections produced by BC Stats are an important data source for this purpose. For example, the employment growth in the education sector is largely dictated by the projected K-12 and post-secondary population growth in the relevant age groups. Government Services industry grows in line with the total population growth as does the social assistance industry. Employment in the health sector is primarily governed by the growth in the total population and, in particular, by the growth in the seniors’ population. The industries that have components in the tourism sector are differentiated according to the sub-provincial growth rates in tax revenues derived from room rentals. A further important determining factor of sub-region direct employment growth in the private sector is the major projects underway in the timeframe.

The output from the model is benchmarked to the LFS industry employment numbers at the B.C. level, as well as to the LFS regional employment numbers for the Development Regions and the Victoria and Vancouver Census Metropolitan Areas.

Once the model is updated to the most current employment levels, then the forecast is produced for five years out. The industrial employment projections from the Canadian Occupational Projection System (COPS) are now used as the source data for the industrial growth, benchmarked to the British Columbia Ministry of Finance’s employment growth rate projections for the goods producing sector and the service producing sector. These growth rates are used in determining both the growth rates in the direct employment and as a benchmark to reconcile the industrial employment generated by the model. The allocation of the provincial growth pattern forecast among the regions is done the same way as the estimates. Population forecasts by Regional District and the information on planned capital projects from the BC Major Projects Inventory are used as the drivers. The one exception is there are no forecasts available

for Room Tax Revenue so, for the tourism industries, the new completed major projects in the food and accommodation sector are integrated into the model.

Currently, there is a demand for economic forecasts by occupation at the College Region level. College Regions are aggregations of sub-sets of Regional Districts. Occupational forecasts are produced at the College Region and the provincial level only. The accompanying appendices contain a conversion table which outlines which Regional District belongs to which College Region.

Updating

The intent is to update the Regional Employment Projection Model annually, based on another year of LFS data plus a new COPS forecast. The multiplier coefficients used to calculate indirect employment, non-basic employment, and occupational employment are to be updated every five years when regional updated Census data becomes available. At that time, the Regional District employment data by industry will also be re-benchmarked.

The model is only as good as the input data assumptions. Reliance on good quality data from COPS is very important. Users of the data who perceive any problems with the assumptions in the model or question the quality of any of the data series we are using, should contact Cathy Stock, Director, Labour and Social Statistics, at (250) 953-3703 or Cathy.Stock@gov.bc.ca.

July 2009

Appendix 2

REPM INDUSTRY

COPS INDUSTRY

ACC&FD	31 Accommodation and food services
AGRIC	1 Agriculture
BEVMFG	9 Food and Beverage Products
BUS_HI	25 Computer System Design Services
BUS_HI	24 Professional Business Services
BUS_HI	26 Other Professional Services
BUS_LO	27 Management, Administrative and Other Support
BUS_LO	24 Professional Business Services
BUS_LO	26 Other Professional Services
COMMUNICA	30 Information, culture and recreation
CONSTRUCT	8 Construction
EDUCATION	28 Educational Services
FIRE	23 Finance, Insurance, Real Estate and Leasing
FISHING	3 Fishing, Hunting and Trapping
FISHMFG	9 Food and Beverage Products
FOODMFG	9 Food and Beverage Products
FORESTLOG	2 Forestry and Logging with support activities
GOVT	33 Public administration
HEALTH	29 Health Care and Social Assistance
MINING	5 Mining (except Oil and Gas)
MINING	6 Support Activities for Mining and Oil & Gas Extraction
MINMFG	14 Manufactured Mineral Products
OTHMFG	12 Printing and Related Support Activities
OTHMFG	13 Rubber, Plastics and Chemicals
OTHMFG	14 Manufactured Mineral Products
OTHMFG	15 Metal Fabrication and Machinery (excluding electrical)
OTHMFG	16 Computer, Electronic and Electrical Products
OTHMFG	17 Transportation Equipment Manufacturing
OTHMFG	18 Other Manufacturing
OTHSERV	29 Health Care and Social Assistance
OTHSERV	32 Other services
PAPERPULP	11 Paper Manufacturing
PETROL	4 Oil and Gas Extraction
PETROL	6 Support Activities for Mining and Oil and Gas Extraction
PETROLMFG	19 Other Manufacturing
RETAIL	21 Retail Trade
TRANOTHER	22 Transportation and Warehousing
TRANRAIL	22 Transportation and Warehousing
TRANTRUCK	22 Transportation and Warehousing
TRANWATER	22 Transportation and Warehousing
UTILITIES	7 Utilities
WDOTHER	10 Wood Product Manufacturing
WDSAWMILLS	10 Wood Product Manufacturing
WHOLESALE	20 Wholesale Trade

Appendix 3

REGIONAL DISTRICT TO COLLEGE REGION CONVERSION FOR REPM

COLLEGE REGION REGIONAL	REGIONAL DISTRICT #	REGIONAL DISTRICT NAME	% of REGIONAL DISTRICT
CAMOSUN	17	Capital	100
FRASER VALLEY	9	Fraser Valley	100
LOWER MAINLAND	15	Greater Vancouver	100
LOWER MAINLAND	29	Sunshine Coast	100
LOWER MAINLAND	31	Squamish Lillooet	87
MALASPINA	19	Cowichan Valley	100
MALASPINA	21	Nanaimo	100
MALASPINA	27	Powell River	100
NEW CALEDONIA	41	Cariboo	37
NEW CALEDONIA	51	Bulkley Nechako	61
NEW CALEDONIA	53	Fraser-Fort George	100
NORTH ISLAND	23	Alberni-Clayoquot	100
NORTH ISLAND	25	Comox Strathcona	100
NORTH ISLAND	43	Mount Waddington	100
NORTH ISLAND	45	Central Coast	100
NORTHERN LIGHTS	49	Kitimat Stikine	2
NORTHERN LIGHTS	55	Peace River	100
NORTHERN LIGHTS	57	Stikine	100
NORTHERN LIGHTS	59	Northern Rockies	100
NORTHWEST	47	Skeena-Queen Charlotte	100
NORTHWEST	49	Kitimat Stikine	98
NORTHWEST	51	Bulkley Nechako	39
OKANAGAN	7	Okanagan- Similkameen	100
OKANAGAN	35	Central Okanagan	100
OKANAGAN	37	North Okanagan	100
OKANAGAN	39	Columbia Shushwap	85
ROCKIES	1	East Kootenay	100
ROCKIES	3	Central Kootenays	20
ROCKIES	39	Columbia Shushwap	15
SELKIRK	3	Central Kootenay	80
SELKIRK	5	Kootenay Boundary	100
THOMPSON RIVERS	31	Squamish Lillooet	13
THOMPSON RIVERS	33	Thompson Nicola	100
THOMPSON RIVERS	41	Cariboo	63

Prepared by: BC Stats

Appendix 4

Projected Annual Growth Rates in Occupational Demand (3-digit)

Fraser Valley College Region

Projected Annual Growth Rates in Occupational Demand

	Estimated Employment		Avg Annual % Chng Over 5 Years
	<u>2008</u>	<u>2013</u>	<u>2008 to 2013</u>
All occupations	135,090	140,940	0.9
A01 Legislators and senior management	1,030	1,070	0.9
A11 Administrative services managers	760	800	1.1
A12 Managers in engineering, architecture, science and information systems	210	230	1.7
A13 Sales, marketing and advertising managers	900	960	1.5
A14 Facility operation and maintenance managers	310	330	1.1
A21 Managers in retail trade	3,200	3,350	0.9
A22 Managers in food service and accommodation	840	900	1.3
A30 Managers in financial and business services	1,020	1,070	1.0
A31 Managers in communication (except broadcasting)	60	60	1.4
A32 Managers in health, education, social and community services	700	740	1.3
A33 Managers in public administration	70	70	0.8
A34 Managers in art, culture, recreation and sport	160	170	1.1
A35 Managers in protective service	140	140	0.5
A36 Managers in other services	280	290	0.9
A37 Managers in construction and transportation	1,520	1,400	-1.5
A38 Managers in primary production (except agriculture)	100	100	0.8
A39 Managers in manufacturing and utilities	710	760	1.4
B01 Auditors, accountants and investment professionals	1,550	1,610	0.9
B02 Human resources and business service professionals	440	470	1.4
B11 Finance and insurance administrative occupations	2,470	2,550	0.7
B21 Secretaries, recorders and transcriptionists	2,350	2,430	0.7
B31 Administrative and regulatory occupations	2,610	2,730	0.9
B41 Clerical supervisors	510	530	1.1
B51 Clerical occupations, general office skills	3,580	3,820	1.3
B52 Office equipment operators	290	300	0.8
B53 Finance and insurance clerks	2,050	2,150	1.0
B54 Administrative support clerks	710	750	1.2
B55 Library, correspondence and related information clerks	1,500	1,570	1.0
B56 Mail and message distribution occupations	760	800	1.1
B57 Recording, scheduling and distributing occupations	1,600	1,700	1.3
C01 Physical science professionals	110	110	0.9
C02 Life science professionals	420	440	1.1
C03 Civil, mechanical, electrical and chemical engineers	490	500	0.6
C04 Other engineers	210	220	1.2
C05 Architects, urban planners and land surveyors	240	240	0.3
C06 Mathematicians, statisticians and actuaries	0	0	1.6
C07 Computer and information systems professionals	810	920	2.6
C11 Technical occupations in physical sciences	220	230	0.8
C12 Technical occupations in life sciences	710	750	1.0
C13 Technical occupations in civil, mechanical and industrial engineering	290	290	0.1
C14 Technical occupations in electronics and electrical engineering	710	750	1.2
C15 Technical occupations in architecture, drafting, surveying and mapping	410	430	0.9
C16 Other technical inspectors and regulatory officers	340	340	0.4
C17 Transportation officers and controllers	520	550	1.2
C18 Technical occupations in computer and information systems	560	610	1.9
D01 Physicians, dentists and veterinarians	620	700	2.6

Fraser Valley College Region

Projected Annual Growth Rates in Occupational Demand

	Estimated Employment		Avg Annual % Chng Over 5 Years
	<u>2008</u>	<u>2013</u>	<u>2008 to 2013</u>
D02 Optometrists, chiropractors and other health diagnosing and treating professionals	80	90	2.7
D03 Pharmacists, dietitians and nutritionists	200	210	1.5
D04 Therapy and assessment professionals	270	310	2.6
D11 Nurse supervisors and registered nurses	2,130	2,420	2.7
D21 Medical technologists and technicians (except dental health)	600	680	2.5
D22 Technical occupations in dental health care	190	220	2.5
D23 Other technical occupations in health care (except dental)	1,020	1,140	2.3
D31 Assisting occupations in support of health services	2,210	2,490	2.6
E01 Judges, lawyers and Quebec notaries	300	300	0.6
E02 Psychologists, social workers, counsellors, clergy and probation officers	1,180	1,280	1.6
E03 Policy and program officers, researchers and consultants	870	930	1.2
E11 University professors and assistants	430	450	0.8
E12 College and other vocational instructors	730	760	0.9
E13 Secondary and elementary school teachers and educational counsellors	3,710	3,850	0.8
E21 Paralegals, social services workers and occupations in education and religion, n.e.c.	3,150	3,480	2.1
F01 Librarians, archivists, conservators and curators	80	90	1.2
F02 Writing, translating and public relations professionals	430	450	1.1
F03 Creative and performing artists	580	610	1.0
F11 Technical occupations in libraries, archives, museums and art galleries	140	150	1.0
F12 Photographers, graphic arts technicians and technical and co-ordinating occupations in motion pictures, broadcasting and the performing arts	260	280	1.1
F13 Announcers and other performers	70	70	1.3
F14 Creative designers and craftspersons	850	890	0.8
F15 Athletes, coaches, referees and related occupations	840	890	1.1
G01 Sales and service supervisors	900	950	1.1
G11 Sales representatives, wholesale trade	1,120	1,190	1.3
G12 Technical sales specialists, wholesale trade	360	390	1.8
G13 Insurance and real estate sales occupations and buyers	980	1,030	1.0
G21 Retail salespersons and sales clerks	6,000	6,280	0.9
G31 Cashiers	2,500	2,620	1.0
G41 Chefs and cooks	1,380	1,480	1.4
G51 Occupations in food and beverage service	1,280	1,370	1.4
G61 Police officers and firefighters	660	680	0.5
G62 Other occupations in protective service	610	620	0.6
G63 Security guards and related occupations	460	480	0.8
G71 Occupations in travel and accommodation	500	530	1.1
G72 Tour and recreational guides and casino occupations	300	320	1.1
G73 Other occupations in travel, accommodation, amusement and recreation	290	300	1.1
G81 Child care and home support workers	2,810	3,010	1.4
G91 Technical occupations in personal service	760	790	0.7
G92 Other occupations in personal service	510	530	0.8
G93 Cleaners	4,370	4,590	1.0
G94 Butchers and bakers, retail and wholesale	550	580	1.1
G96 Food counter attendants, kitchen helpers and related occupations	1,830	1,970	1.5
G97 Other sales and related occupations	1,910	2,000	1.0
G98 Other elemental service occupations	330	350	1.1

Fraser Valley College Region

Projected Annual Growth Rates in Occupational Demand

	Estimated Employment		Avg Annual % Chng Over 5 Years
	<u>2008</u>	<u>2013</u>	<u>2008 to 2013</u>
H01 Contractors and supervisors, trades and related workers	1,410	1,340	-1.0
H02 Supervisors, railway and motor transportation occupations	90	90	0.8
H11 Plumbers, pipefitters and gas fitters	870	810	-1.5
H12 Carpenters and cabinetmakers	3,400	3,150	-1.5
H13 Masonry and plastering trades	1,050	950	-2.0
H14 Other construction trades	1,620	1,480	-1.8
H21 Electrical trades and telecommunications occupations	1,580	1,510	-0.9
H22 Stationary engineers and power station and system operators	140	150	1.3
H31 Machinists and related occupations	300	330	2.0
H32 Metal forming, shaping and erecting trades	1,560	1,630	0.8
H41 Machinery and transportation equipment mechanics (except motor vehicle)	1,730	1,810	0.8
H42 Automotive service technicians	1,560	1,630	0.9
H43 Other mechanics	280	290	0.8
H51 Upholsterers, tailors, shoe repairers, jewellers and related occupations	250	260	1.2
H52 Printing press operators, commercial divers and other trades and related occupations, n.e.c.	310	310	0.3
H53 Other installers, repairers and servicers	820	810	-0.3
H61 Heavy equipment operators	1,630	1,530	-1.2
H62 Crane operators, drillers and blasters	210	200	-0.9
H71 Motor vehicle and transit drivers	4,960	5,220	1.0
H72 Train crew operating occupations	210	230	1.2
H73 Other transport equipment operators and related workers	360	380	1.2
H81 Longshore workers and material handlers	1,640	1,760	1.5
H82 Trades helpers and labourers	2,800	2,590	-1.5
H83 Public works and other labourers, n.e.c.	310	320	0.8
I01 Contractors, operators and supervisors in agriculture, horticulture and aquaculture	3,320	3,430	0.6
I02 Agriculture and horticulture workers	2,800	2,890	0.6
I11 Supervisors, logging and forestry	50	60	2.4
I12 Supervisors, mining, oil and gas	70	70	-0.9
I13 Underground miners, oil and gas drillers and related workers	80	80	-0.9
I14 Mine service workers and operators in oil and gas drilling	50	50	-0.1
I15 Logging machinery operators	140	170	2.9
I16 Logging and forestry workers	210	230	1.7
I17 Fishing vessel masters and skippers and fishermen/women	60	60	0.6
I18 Other fishing and trapping occupations	20	20	0.8
I21 Primary production labourers	2,420	2,520	0.8
J01 Supervisors, processing occupations	340	380	2.1
J02 Supervisors, assembly and fabrication	100	110	1.9
J11 Central control and process operators in manufacturing and processing	140	150	1.4
J12 Machine operators and related workers in metal and mineral products processing	180	190	1.7
J13 Machine operators and related workers in chemical, plastic and rubber processing	230	250	1.8
J14 Machine operators and related workers in pulp and paper production and wood processing	760	860	2.6
J15 Machine operators and related workers in textile processing	60	70	1.3

Fraser Valley College Region

Projected Annual Growth Rates in Occupational Demand

	Estimated Employment		Avg Annual % Chng Over 5 Years
	<u>2008</u>	<u>2013</u>	<u>2008 to 2013</u>
J16 Machine operators and related workers in fabric, fur and leather products manufacturing	160	170	1.5
J17 Machine operators and related workers in food, beverage and tobacco processing	880	930	1.2
J18 Printing machine operators and related occupations	210	200	-1.3
J19 Machining, metalworking, woodworking and related machine operators	390	430	1.9
J21 Mechanical, electrical and electronics assemblers	320	350	1.8
J22 Other assembly and related occupations	890	980	1.9
J31 Labourers in processing, manufacturing and utilities	2,270	2,480	1.8

Appendix 5

Projected Annual Growth Rates in Occupational Demand (4-digit)

Fraser Valley College Region

Projected Annual Growth Rates in Occupational Demand

	Estimated Employment		Avg Annual % Chng Over 5 Years
	2008	2013	2008 to 2013
All occupations	135,090	140,940	0.9
A Management occupations	12,000	12,460	0.8
A0 Senior management occupations	1,020	1,070	0.9
A01 Legislators and senior management	1,030	1,070	0.9
A011 Legislators	100	100	0.5
A012 Senior government managers and officials	120	120	0.5
A013 Senior managers - Financial, communications and other business services	200	220	1.5
A014 Senior managers - Health, education, social and community services and membership organizations	130	140	1.5
A015 Senior managers - Trade, broadcasting and other services, n.e.c.	160	170	1.2
A016 Senior managers - Goods production, utilities, transportation and construction	310	320	0.3
A1 Specialist managers	2,170	2,320	1.3
A11 Administrative services managers	760	800	1.1
A111 Financial managers	310	320	0.9
A112 Human resources managers	150	160	1.3
A113 Purchasing managers	50	50	1.1
A114 Other administrative services managers	240	250	1.1
A12 Managers in engineering, architecture, science and information systems	210	230	1.7
A121 Engineering managers	70	70	1.0
A122 Computer and information systems managers	120	140	2.1
A123 Architecture and science managers	20	20	1.3
A13 Sales, marketing and advertising managers	900	960	1.5
A131 Sales, marketing and advertising managers	900	970	1.5
A14 Facility operation and maintenance managers	310	330	1.1
A141 Facility operation and maintenance managers	310	330	1.1
A2 Managers in retail trade, food and accommodation services	4,040	4,250	1.0
A21 Managers in retail trade	3,200	3,350	0.9
A211 Retail trade managers	3,200	3,350	0.9
A22 Managers in food service and accommodation	840	900	1.3
A221 Restaurant and food service managers	490	530	1.4
A222 Accommodation service managers	340	370	1.3
A3 Other managers, n.e.c.	4,760	4,820	0.3
A30 Managers in financial and business services	1,020	1,070	1.0
A301 Insurance, real estate and financial brokerage managers	580	610	0.9
A302 Banking, credit and other investment managers	400	420	1.0
A303 Other business services managers	40	40	1.1
A31 Managers in communication (except broadcasting)	60	60	1.4
A311 Telecommunication carriers managers	20	20	1.6
A312 Postal and courier services managers	40	40	1.2
A32 Managers in health, education, social and community services	700	740	1.3
A321 Managers in health care	120	140	2.7
A322 Administrators - Post-secondary education and vocational training	80	90	0.8
A323 School principals and administrators of elementary and secondary education	350	360	0.8
A324 Managers in social, community and correctional services	140	160	1.9
A33 Managers in public administration	70	70	0.8

Fraser Valley College Region

Projected Annual Growth Rates in Occupational Demand

	Estimated Employment		Avg Annual % Chng Over 5 Years
	2008	2013	2008 to 2013
A331 Government managers - Health and social policy development and program administration	20	20	1.4
A332 Government managers - Economic analysis, policy development and program administration	30	30	0.6
A333 Government managers - Education policy development and program administration	-	-	-
A334 Other managers in public administration	20	20	0.6
A34 Managers in art, culture, recreation and sport	160	170	1.1
A341 Library, archive, museum and art gallery managers	30	30	1.0
A342 Managers - Publishing, motion pictures, broadcasting and performing arts	40	40	1.2
A343 Recreation, sports and fitness program and service directors	90	90	1.1
A35 Managers in protective service	140	140	0.5
A351 Commissioned police officers	10	10	0.5
A352 Fire chiefs and senior firefighting officers	30	30	0.5
A353 Commissioned officers, armed forces	110	110	0.5
A36 Managers in other services	280	290	0.9
A361 Other services managers	280	290	0.8
A37 Managers in construction and transportation	1,520	1,400	-1.5
A371 Construction managers	860	780	-1.8
A372 Residential home builders and renovators	470	430	-2.0
A373 Transportation managers	180	190	1.2
A38 Managers in primary production (except agriculture)	100	100	0.8
A381 Primary production managers (except agriculture)	100	110	0.9
A39 Managers in manufacturing and utilities	710	760	1.4
A391 Manufacturing managers	630	680	1.6
A392 Utilities managers	80	80	0.4
B Business, finance and administrative occupations	20,410	21,420	1.0
B0 Professional occupations in business and finance	1,990	2,090	1.0
B01 Auditors, accountants and investment professionals	1,550	1,610	0.9
B011 Financial auditors and accountants	920	960	0.8
B012 Financial and investment analysts	100	100	1.0
B013 Securities agents, investment dealers and brokers	110	120	0.9
B014 Other financial officers	420	440	1.0
B02 Human resources and business service professionals	440	470	1.4
B021 Specialists in human resources	180	190	1.1
B022 Professional occupations in business services to management	270	290	1.5
B1 Finance and insurance administration occupations	2,470	2,550	0.7
B11 Finance and insurance administrative occupations	2,470	2,550	0.7
B111 Bookkeepers	1,910	1,960	0.6
B112 Loan officers	250	260	1.0
B113 Insurance adjusters and claims examiners	150	160	1.0
B114 Insurance underwriters	30	30	1.0
B115 Assessors, valuers and appraisers	120	120	0.9
B116 Customs, ship and other brokers	10	20	1.1
B2 Secretaries	2,350	2,430	0.7
B21 Secretaries, recorders and transcriptionists	2,350	2,430	0.7
B211 Secretaries (except legal and medical)	1,980	2,040	0.6

Fraser Valley College Region

Projected Annual Growth Rates in Occupational Demand

	Estimated Employment		Avg Annual % Chng Over 5 Years
	<u>2008</u>	<u>2013</u>	<u>2008 to 2013</u>
B212 Legal secretaries	220	230	0.6
B213 Medical secretaries	50	60	2.5
B214 Court recorders and medical transcriptionists	90	100	1.8
B3 Administrative and regulatory occupations	2,610	2720	0.9
B31 Administrative and regulatory occupations	2,610	2730	0.9
B311 Administrative officers	1,570	1640	0.9
B312 Executive assistants	140	140	0.9
B313 Personnel and recruitment officers	70	70	1.1
B314 Property administrators	440	460	0.9
B315 Purchasing agents and officers	170	180	1.0
B316 Conference and event planners	70	70	1.1
B317 Court officers and justices of the peace	20	20	0.5
B318 Immigration, employment insurance and revenue officers	140	140	0.5
B4 Clerical supervisors	500	530	1.1
B41 Clerical supervisors	510	530	1.1
B411 Supervisors, general office and administrative support clerks	80	80	1.1
B412 Supervisors, finance and insurance clerks	110	120	0.9
B413 Supervisors, library, correspondence and related information clerks	120	130	1.1
B414 Supervisors, mail and message distribution occupations	80	80	1.2
B415 Supervisors, recording, distributing and scheduling occupations	120	120	1.3
B5 Clerical occupations	10,480	11090	1.2
B51 Clerical occupations, general office skills	3,580	3820	1.3
B511 General office clerks	1,920	2010	0.9
B513 Records management and filing clerks	160	170	1.4
B514 Receptionists and switchboard operators	1,500	1630	1.8
B52 Office equipment operators	290	300	0.8
B522 Data entry clerks	200	210	1.0
B523 Desktop publishing operators and related occupations	20	20	-0.9
B524 Telephone operators	60	60	1.0
B53 Finance and insurance clerks	2,050	2150	1.0
B531 Accounting and related clerks	840	880	0.9
B532 Payroll clerks	200	210	1.2
B533 Customer service representatives - Financial services	820	860	1.0
B534 Banking, insurance and other financial clerks	180	190	1.0
B535 Collectors	30	30	0.8
B54 Administrative support clerks	710	750	1.2
B541 Administrative clerks	620	660	1.2
B542 Personnel clerks	50	60	1.4
B543 Court clerks	30	30	0.5
B55 Library, correspondence and related information clerks	1,500	1570	1.0
B551 Library clerks	80	90	1.1
B552 Correspondence, publication and related clerks	20	20	1.3
B553 Customer service, information and related clerks	1,110	1170	1.0
B554 Survey interviewers and statistical clerks	280	290	0.7
B56 Mail and message distribution occupations	760	800	1.1
B561 Mail, postal and related clerks	220	230	1.2
B562 Letter carriers	230	240	1.3

Fraser Valley College Region

Projected Annual Growth Rates in Occupational Demand

	Estimated Employment		Avg Annual % Chng Over 5 Years
	2008	2013	2008 to 2013
B563 Couriers, messengers and door-to-door distributors	310	330	1.0
B57 Recording, scheduling and distributing occupations	1,600	1700	1.3
B571 Shippers and receivers	640	690	1.5
B572 Storekeepers and parts clerks	350	370	1.3
B573 Production clerks	70	80	1.4
B574 Purchasing and inventory clerks	270	290	1.2
B575 Dispatchers and radio operators	240	250	1.0
B576 Transportation route and crew schedulers	20	30	1.2
C Natural and applied sciences and related occupations	6,040	6400	1.2
C0 Professional occupations in natural and applied sciences	2,290	2450	1.4
C01 Physical science professionals	110	110	0.9
C011 Physicists and astronomers	10	10	0.8
C012 Chemists	30	40	1.7
C013 Geologists, geochemists and geophysicists	60	60	0.6
C014 Meteorologists	10	10	0.9
C015 Other professional occupations in physical sciences	10	10	0.0
C02 Life science professionals	420	440	1.1
C021 Biologists and related scientists	180	190	0.8
C022 Forestry professionals	200	210	1.4
C023 Agricultural representatives, consultants and specialists	40	40	0.9
C03 Civil, mechanical, electrical and chemical engineers	490	500	0.6
C031 Civil engineers	270	280	0.2
C032 Mechanical engineers	120	130	1.2
C033 Electrical and electronics engineers	70	70	0.8
C034 Chemical engineers	20	20	1.1
C04 Other engineers	210	220	1.2
C041 Industrial and manufacturing engineers	50	60	1.5
C042 Metallurgical and materials engineers	-	-	-
C043 Mining engineers	20	20	-0.3
C044 Geological engineers	30	30	0.5
C045 Petroleum engineers	20	20	0.7
C046 Aerospace engineers	20	20	1.5
C047 Computer engineers (except software engineers)	50	60	1.7
C048 Other professional engineers, n.e.c.	20	20	1.1
C05 Architects, urban planners and land surveyors	240	240	0.3
C051 Architects	50	50	0.0
C052 Landscape architects	10	10	0.6
C053 Urban and land use planners	70	70	0.5
C054 Land surveyors	100	110	0.4
C06 Mathematicians, statisticians and actuaries	-	-	-
C061 Mathematicians, statisticians and actuaries	-	-	-
C07 Computer and information systems professionals	810	920	2.6
C071 Information systems analysts and consultants	280	320	2.3
C072 Database analysts and data administrators	30	30	2.1
C073 Software engineers and designers	60	70	2.8
C074 Computer programmers and interactive media developers	270	300	2.6
C075 Web designers and developers	180	210	2.9

Fraser Valley College Region

Projected Annual Growth Rates in Occupational Demand

	Estimated Employment		Avg Annual % Chng Over 5 Years
	2008	2013	2008 to 2013
C1 Technical occupations related to natural and applied sciences	3,750	3,950	1.1
C11 Technical occupations in physical sciences	220	230	0.8
C111 Chemical technologists and technicians	140	150	1.0
C112 Geological and mineral technologists and technicians	70	70	0.5
C113 Meteorological technicians	10	10	1.0
C12 Technical occupations in life sciences	710	750	1.0
C121 Biological technologists and technicians	180	180	0.9
C122 Agricultural and fish products inspectors	30	30	0.7
C123 Forestry technologists and technicians	250	260	1.3
C124 Conservation and fishery officers	100	100	0.6
C125 Landscape and horticultural technicians and specialists	150	160	0.8
C13 Technical occupations in civil, mechanical and industrial engineering	290	290	0.1
C131 Civil engineering technologists and technicians	70	80	0.3
C132 Mechanical engineering technologists and technicians	50	60	1.1
C133 Industrial engineering and manufacturing technologists and technicians	50	50	1.7
C134 Construction estimators	110	100	-1.1
C14 Technical occupations in electronics and electrical engineering	710	750	1.2
C141 Electrical and electronics engineering technologists and technicians	140	140	0.9
C142 Electronic service technicians (household and business equipment)	450	480	1.3
C143 Industrial instrument technicians and mechanics	70	70	1.4
C144 Aircraft instrument, electrical and avionics mechanics, technicians and inspectors	60	60	1.2
C15 Technical occupations in architecture, drafting, surveying and mapping	410	430	0.9
C151 Architectural technologists and technicians	30	30	0.2
C152 Industrial designers	40	40	1.3
C153 Drafting technologists and technicians	240	250	0.9
C154 Land survey technologists and technicians	30	30	0.3
C155 Mapping and related technologists and technicians	80	80	1.1
C16 Other technical inspectors and regulatory officers	340	340	0.4
C161 Non-destructive testers and inspectors	20	20	0.4
C162 Engineering inspectors and regulatory officers	20	20	0.6
C163 Inspectors in public and environmental health and occupational health and safety	140	150	1.0
C164 Construction inspectors	160	160	-0.2
C17 Transportation officers and controllers	520	550	1.2
C171 Air pilots, flight engineers and flying instructors	250	260	1.3
C172 Air traffic control and related occupations	50	50	1.2
C173 Deck officers, water transport	150	150	1.2
C174 Engineer officers, water transport	60	70	1.2
C175 Railway traffic controllers and marine traffic regulators	10	10	1.0
C18 Technical occupations in computer and information systems	560	610	1.9
C181 Computer network technicians	190	210	1.6
C182 User support technicians	350	390	2.0
C183 Systems testing technicians	10	10	2.5
D Health occupations	7,330	8,250	2.5
D0 Professional occupations in health	1,170	1,310	2.4
D01 Physicians, dentists and veterinarians	620	700	2.6

Fraser Valley College Region

Projected Annual Growth Rates in Occupational Demand

	Estimated Employment		Avg Annual % Chng Over 5 Years
	2008	2013	2008 to 2013
D011 Specialist physicians	150	180	2.7
D012 General practitioners and family physicians	280	320	2.8
D013 Dentists	120	130	2.7
D014 Veterinarians	60	70	1.6
D02 Optometrists, chiropractors and other health diagnosing and treating professionals	80	90	2.7
D021 Optometrists	20	30	2.8
D022 Chiropractors	50	50	2.8
D023 Other professional occupations in health diagnosing and treating	10	10	2.8
D03 Pharmacists, dietitians and nutritionists	200	210	1.5
D031 Pharmacists	150	160	1.2
D032 Dietitians and nutritionists	50	60	2.6
D04 Therapy and assessment professionals	270	310	2.6
D041 Audiologists and speech-language pathologists	50	60	1.9
D042 Physiotherapists	110	130	2.8
D043 Occupational therapists	70	80	2.7
D044 Other professional occupations in therapy and assessment	40	50	2.3
D1 Nurse supervisors and registered nurses	2,130	2,420	2.7
D11 Nurse supervisors and registered nurses	2,130	2,420	2.7
D111 Head nurses and supervisors	60	70	2.7
D112 Registered nurses	2,070	2,350	2.7
D2 Technical and related occupations in health	1,820	2,040	2.4
D21 Medical technologists and technicians (except dental health)	600	680	2.5
D211 Medical laboratory technologists and pathologists' assistants	130	140	2.8
D212 Medical laboratory technicians	140	160	2.7
D213 Veterinary and animal health technologists and technicians	100	110	1.6
D214 Respiratory therapists, clinical perfusionists and cardio-pulmonary technologists	40	40	2.6
D215 Medical radiation technologists	130	150	2.7
D216 Medical sonographers	20	20	2.8
D217 Cardiology technologists	20	20	2.8
D218 Electroencephalographic and other diagnostic technologists, n.e.c.	-	-	-
D219 Other medical technologists and technicians (except dental health)	20	20	2.0
D22 Technical occupations in dental health care	190	220	2.5
D221 Denturists	20	20	2.0
D222 Dental hygienists and dental therapists	110	130	2.8
D223 Dental technologists, technicians and laboratory bench workers	60	70	2.1
D23 Other technical occupations in health care (except dental)	1,020	1,140	2.3
D231 Opticians	50	60	1.9
D232 Midwives and practitioners of natural healing	70	80	2.4
D233 Licensed practical nurses	350	400	2.8
D234 Ambulance attendants and other paramedical occupations	350	390	2.1
D235 Other technical occupations in therapy and assessment	200	220	1.7
D3 Assisting occupations in support of health services	2,210	2,490	2.6
D31 Assisting occupations in support of health services	2,210	2,490	2.6
D311 Dental assistants	360	410	2.8
D312 Nurse aides, orderlies and patient service associates	1,450	1,640	2.7
D313 Other assisting occupations in support of health services	400	430	1.9
E Occupations in social science, education, government service and religion	10,360	11,040	1.3

Fraser Valley College Region

Projected Annual Growth Rates in Occupational Demand

	Estimated Employment		Avg Annual % Chng Over 5 Years
	2008	2013	2008 to 2013
E0 Judges, lawyers, psychologists, social workers, ministers of religion, and policy and program officers	2,350	2,510	1.3
E01 Judges, lawyers and Quebec notaries	300	300	0.6
E011 Judges	10	10	0.5
E012 Lawyers and Quebec notaries	280	290	0.6
E02 Psychologists, social workers, counsellors, clergy and probation officers	1,180	1,280	1.6
E021 Psychologists	80	90	2.0
E022 Social workers	400	430	1.9
E023 Family, marriage and other related counsellors	290	330	2.4
E024 Ministers of religion	350	360	0.8
E025 Probation and parole officers and related occupations	70	70	0.6
E03 Policy and program officers, researchers and consultants	870	930	1.2
E031 Natural and applied science policy researchers, consultants and program officers	90	100	0.9
E032 Economists and economic policy researchers and analysts	20	20	1.0
E033 Business development officers and marketing researchers and consultants	220	230	1.3
E034 Social policy researchers, consultants and program officers	120	120	1.2
E035 Education policy researchers, consultants and program officers	100	100	0.8
E036 Recreation, sports and fitness program supervisors and consultants	120	130	1.5
E037 Program officers unique to government	70	70	0.5
E038 Other professional occupations in social science, n.e.c.	50	50	1.4
E039 Health policy researchers, consultants and program officers	100	110	2.0
E1 Teachers and professors	4,860	5,050	0.8
E11 University professors and assistants	430	450	0.8
E111 University professors	260	270	0.8
E112 Post-secondary teaching and research assistants	170	180	0.8
E12 College and other vocational instructors	730	760	0.9
E121 College and other vocational instructors	730	760	0.9
E13 Secondary and elementary school teachers and educational counsellors	3,710	3,850	0.8
E131 Secondary school teachers	1,320	1,370	0.8
E132 Elementary school and kindergarten teachers	2,210	2,290	0.8
E133 Educational counsellors	180	190	0.8
E2 Paralegals, social services workers and occupations in education and religion, n.e.c.	3,150	3,480	2.1
E21 Paralegals, social services workers and occupations in education and religion, n.e.c.	3,150	3,480	2.1
E211 Paralegal and related occupations	190	200	0.6
E212 Community and social service workers	1,160	1,290	2.2
E213 Employment counsellors	160	170	1.3
E214 Instructors and teachers of persons with disabilities	40	40	1.3
E215 Other instructors	200	200	0.8
E216 Other religious occupations	70	70	0.8
E217 Early childhood educators and assistants	1,320	1,490	2.6
F Occupations in art, culture, recreation and sport	3,260	3,430	1.0
F0 Professional occupations in art and culture	1,090	1,150	1.0
F01 Librarians, archivists, conservators and curators	80	90	1.2
F011 Librarians	60	70	1.2
F012 Conservators and curators	20	20	1.2

Fraser Valley College Region

Projected Annual Growth Rates in Occupational Demand

	Estimated Employment		Avg Annual % Chng Over 5 Years
	2008	2013	2008 to 2013
F013 Archivists	-	-	-
F02 Writing, translating and public relations professionals	430	450	1.1
F021 Authors and writers	150	160	1.2
F022 Editors	70	80	1.1
F023 Journalists	60	60	0.8
F024 Professional occupations in public relations and communications	120	130	1.2
F025 Translators, terminologists and interpreters	40	40	1.1
F03 Creative and performing artists	580	610	1.0
F031 Producers, directors, choreographers and related occupations	50	50	1.2
F032 Conductors, composers and arrangers	10	10	1.1
F033 Musicians and singers	250	260	0.8
F034 Dancers	60	60	0.8
F035 Actors and comedians	20	30	1.2
F036 Painters, sculptors and other visual artists	180	200	1.1
F1 Technical occupations in art, culture, recreation and sport	2,170	2,280	1.0
F11 Technical occupations in libraries, archives, museums and art galleries	140	150	1.0
F111 Library and archive technicians and assistants	100	100	1.0
F112 Technical occupations related to museums and art galleries	40	50	1.1
F12 Photographers, graphic arts technicians and technical and co-ordinating occupations in motion pictures, broadcasting and the performing arts	260	280	1.1
F121 Photographers	110	120	1.5
F122 Film and video camera operators	30	30	1.2
F123 Graphic arts technicians	20	20	0.8
F124 Broadcast technicians	10	20	1.0
F125 Audio and video recording technicians	30	40	0.9
F126 Other technical and co-ordinating occupations in motion pictures, broadcasting and the performing arts	30	30	1.2
F127 Support occupations in motion pictures, broadcasting and the performing arts	30	30	0.7
F13 Announcers and other performers	70	70	1.3
F131 Announcers and other broadcasters	50	60	1.2
F132 Other performers	10	10	1.5
F14 Creative designers and craftspersons	850	890	0.8
F141 Graphic designers and illustrators	340	340	0.2
F142 Interior designers	110	110	0.6
F143 Theatre, fashion, exhibit and other creative designers	50	50	1.2
F144 Artisans and craftspersons	360	380	1.4
F145 Patternmakers - Textile, leather and fur products	10	10	1.6
F15 Athletes, coaches, referees and related occupations	840	890	1.1
F151 Athletes	20	30	1.1
F152 Coaches	100	100	0.9
F153 Sports officials and referees	80	80	1.1
F154 Program leaders and instructors in recreation, sport and fitness	640	680	1.2
G Sales and service occupations	30,430	32,080	1.1
G0 Sales and service supervisors	900	960	1.1
G01 Sales and service supervisors	900	950	1.1
G011 Retail trade supervisors	530	560	1.0
G012 Food service supervisors	180	200	1.4

Fraser Valley College Region

Projected Annual Growth Rates in Occupational Demand

	Estimated Employment		Avg Annual % Chng Over 5 Years
	2008	2013	2008 to 2013
G013 Executive housekeepers	50	50	1.4
G014 Dry cleaning and laundry supervisors	10	10	1.6
G015 Cleaning supervisors	70	70	1.0
G016 Other service supervisors	60	70	1.1
G1 Wholesale, technical, insurance, real estate sales specialists, and retail, wholesale and grain buyers	2,450	2,600	1.3
G11 Sales representatives, wholesale trade	1,120	1,190	1.3
G111 Sales representatives, wholesale trade (non-technical)	1,120	1,190	1.3
G12 Technical sales specialists, wholesale trade	360	390	1.8
G121 Technical sales specialists, wholesale trade	350	380	1.9
G13 Insurance and real estate sales occupations and buyers	980	1,030	1.0
G131 Insurance agents and brokers	430	450	1.0
G132 Real estate agents and salespersons	400	410	0.8
G133 Retail and wholesale buyers	150	160	1.1
G134 Grain elevator operators	-	-	-
G2 Retail salespersons and sales clerks	6,000	6,280	0.9
G21 Retail salespersons and sales clerks	6,000	6,280	0.9
G211 Retail salespersons and sales clerks	6,000	6,290	0.9
G3 Cashiers	2,500	2,630	1.0
G31 Cashiers	2,500	2,620	1.0
G311 Cashiers	2,510	2,630	1.0
G4 Chefs and cooks	1,390	1,490	1.4
G41 Chefs and cooks	1,380	1,480	1.4
G411 Chefs	210	230	1.4
G412 Cooks	1,170	1,250	1.5
G5 Occupations in food and beverage service	1,280	1,370	1.4
G51 Occupations in food and beverage service	1,280	1,370	1.4
G511 Maitres d'hôtel and hosts/hostesses	110	110	1.3
G512 Bartenders	200	210	1.3
G513 Food and beverage servers	970	1,040	1.4
G6 Occupations in protective services	1,730	1,780	0.6
G61 Police officers and firefighters	660	680	0.5
G611 Police officers (except commissioned)	480	490	0.5
G612 Firefighters	180	190	0.5
G62 Other occupations in protective service	610	620	0.6
G621 Sheriffs and bailiffs	40	50	0.5
G622 Correctional service officers	210	220	0.5
G623 By-law enforcement and other regulatory officers, n.e.c.	80	90	0.7
G624 Other ranks, armed forces	200	210	0.5
G625 Other protective service occupations	60	70	0.7
G63 Security guards and related occupations	460	480	0.8
G631 Security guards and related occupations	460	480	0.8
G7 Occupations in travel and accommodation, including attendants in recreation and sport	1,100	1,160	1.1
G71 Occupations in travel and accommodation	500	530	1.1
G711 Travel counsellors	180	190	0.8
G712 Pursers and flight attendants	30	30	1.3
G713 Airline sales and service agents	80	80	1.2

Fraser Valley College Region

Projected Annual Growth Rates in Occupational Demand

	Estimated Employment		Avg Annual % Chng Over 5 Years
	2008	2013	2008 to 2013
G714 Ticket agents, cargo service representatives and related clerks (except airline)	40	40	1.2
G715 Hotel front desk clerks	180	190	1.4
G72 Tour and recreational guides and casino occupations	300	320	1.1
G721 Tour and travel guides	90	100	0.9
G722 Outdoor sport and recreational guides	120	130	1.1
G723 Casino occupations	90	90	1.2
G73 Other occupations in travel, accommodation, amusement and recreation	290	300	1.1
G731 Operators and attendants in amusement, recreation and sport	250	270	1.1
G732 Other attendants in accommodation and travel	30	30	1.3
G8 Child care and home support workers	2,810	3,010	1.4
G81 Child care and home support workers	2,810	3,010	1.4
G811 Visiting homemakers, housekeepers and related occupations	950	1,060	2.3
G812 Elementary and secondary school teacher assistants	1,130	1,170	0.8
G814 Babysitters, nannies and parents' helpers	720	770	1.3
G9 Sales and service occupations, n.e.c.	10,280	10,810	1.0
G91 Technical occupations in personal service	760	790	0.7
G911 Hairstylists and barbers	740	760	0.7
G912 Funeral directors and embalmers	30	30	0.7
G92 Other occupations in personal service	510	530	0.8
G921 Image, social and other personal consultants	40	40	0.9
G922 Estheticians, electrologists and related occupations	280	290	0.8
G923 Pet groomers and animal care workers	180	190	0.8
G924 Other personal service occupations	10	10	0.8
G93 Cleaners	4,370	4,590	1.0
G931 Light duty cleaners	1,570	1,670	1.2
G932 Specialized cleaners	450	470	0.8
G933 Janitors, caretakers and building superintendents	2,350	2,450	0.8
G94 Butchers and bakers, retail and wholesale	550	580	1.1
G941 Butchers, meat cutters and fishmongers, retail and wholesale	210	220	1.0
G942 Bakers	340	360	1.1
G96 Food counter attendants, kitchen helpers and related occupations	1,830	1,970	1.5
G961 Food counter attendants, kitchen helpers and related occupations	1,830	1,970	1.5
G97 Other sales and related occupations	1,910	2,000	1.0
G971 Service station attendants	390	400	0.9
G972 Grocery clerks and store shelf stockers	1,210	1,270	1.0
G973 Other elemental sales occupations	320	330	1.1
G98 Other elemental service occupations	330	350	1.1
G981 Dry cleaning and laundry occupations	170	180	1.3
G982 Ironing, pressing and finishing occupations	30	30	0.9
G983 Other elemental service occupations	130	130	0.8
H Trades, transport and equipment operators and related occupations	29,100	28,760	-0.2
H0 Contractors and supervisors in trades and transportation	1,490	1,420	-0.9
H01 Contractors and supervisors, trades and related workers	1,410	1,340	-1.0
H011 Supervisors, machinists and related occupations	50	60	1.7
H012 Contractors and supervisors, electrical trades and telecommunications occupations	130	120	-1.5

Fraser Valley College Region

Projected Annual Growth Rates in Occupational Demand

	Estimated Employment		Avg Annual % Chng Over 5 Years
	2008	2013	2008 to 2013
H013 Contractors and supervisors, pipefitting trades	50	50	-1.4
H014 Contractors and supervisors, metal forming, shaping and erecting trades	100	110	0.6
H015 Contractors and supervisors, carpentry trades	230	210	-1.7
H016 Contractors and supervisors, mechanic trades	150	160	0.6
H017 Contractors and supervisors, heavy construction equipment crews	310	300	-1.0
H018 Supervisors, printing and related occupations	30	20	-3.6
H019 Contractors and supervisors, other construction trades, installers, repairers and servicers	340	310	-1.8
H02 Supervisors, railway and motor transportation occupations	90	90	0.8
H021 Supervisors, railway transport operations	30	30	1.3
H022 Supervisors, motor transport and other ground transit operators	60	60	0.7
H1 Construction trades	6,950	6,390	-1.6
H11 Plumbers, pipefitters and gas fitters	870	810	-1.5
H111 Plumbers	550	500	-1.8
H112 Steamfitters, pipefitters and sprinkler system installers	210	200	-0.8
H113 Gas fitters	100	100	-1.2
H12 Carpenters and cabinetmakers	3,400	3,150	-1.5
H121 Carpenters	3,010	2,740	-1.8
H122 Cabinetmakers	400	420	1.0
H13 Masonry and plastering trades	1,050	950	-2.0
H131 Bricklayers	180	170	-1.9
H132 Concrete finishers	160	150	-1.9
H133 Tilesetters	130	120	-2.1
H134 Plasterers, drywall installers and finishers and lathers	580	520	-2.1
H14 Other construction trades	1,620	1,480	-1.8
H141 Roofers and shinglers	370	330	-2.1
H142 Glaziers	120	120	-0.5
H143 Insulators	110	100	-2.0
H144 Painters and decorators	740	680	-1.9
H145 Floor covering installers	280	260	-1.6
H2 Stationary engineers, power station operators and electrical trades and telecommunications occupations	1,720	1,650	-0.8
H21 Electrical trades and telecommunications occupations	1,580	1,510	-0.9
H211 Electricians (except industrial and power system)	950	850	-2.0
H212 Industrial electricians	260	270	1.1
H213 Power system electricians	40	40	0.3
H214 Electrical power line and cable workers	120	110	-0.7
H215 Telecommunications line and cable workers	60	60	0.6
H216 Telecommunications installation and repair workers	120	130	1.0
H217 Cable television service and maintenance technicians	40	40	1.1
H22 Stationary engineers and power station and system operators	140	150	1.3
H221 Stationary engineers and auxiliary equipment operators	120	130	1.5
H222 Power systems and power station operators	20	20	0.2
H3 Machinists, metal forming, shaping and erecting occupations	1,860	1,960	1.0
H31 Machinists and related occupations	300	330	2.0
H311 Machinists and machining and tooling inspectors	280	310	2.0
H312 Tool and die makers	20	20	2.2
H32 Metal forming, shaping and erecting trades	1,560	1,630	0.8

Fraser Valley College Region

Projected Annual Growth Rates in Occupational Demand

	Estimated Employment		Avg Annual % Chng Over 5 Years
	2008	2013	2008 to 2013
H321 Sheet metal workers	250	240	-0.5
H322 Boilermakers	60	60	1.4
H323 Structural metal and platework fabricators and fitters	170	180	1.7
H324 Ironworkers	130	130	-0.5
H325 Blacksmiths and die setters	-	-	-
H326 Welders and related machine operators	950	1,010	1.1
H4 Mechanics	3,570	3,720	0.8
H41 Machinery and transportation equipment mechanics (except motor vehicle)	1,730	1,810	0.8
H411 Construction millwrights and industrial mechanics (except textile)	660	710	1.4
H412 Heavy-duty equipment mechanics	610	630	0.7
H413 Refrigeration and air conditioning mechanics	160	150	-1.2
H414 Railway carmen/women	30	40	1.3
H415 Aircraft mechanics and aircraft inspectors	210	230	1.4
H416 Machine fitters	20	20	0.5
H417 Textile machinery mechanics and repairers	-	-	-
H418 Elevator constructors and mechanics	30	20	-1.4
H42 Automotive service technicians	1,560	1,630	0.9
H421 Automotive service technicians, truck and bus mechanics and mechanical repairers	1,280	1,340	0.9
H422 Motor vehicle body repairers	280	290	0.8
H43 Other mechanics	280	290	0.8
H431 Oil and solid fuel heating mechanics	10	10	-1.1
H432 Electric appliance servicers and repairers	70	80	0.5
H433 Electrical mechanics	30	30	0.7
H434 Motorcycle and other related mechanics	40	40	1.1
H435 Other small engine and equipment mechanics	120	120	1.1
H5 Other trades, n.e.c.	1,380	1,380	0.1
H51 Upholsterers, tailors, shoe repairers, jewellers and related occupations	250	260	1.2
H511 Upholsterers	70	80	1.2
H512 Tailors, dressmakers, furriers and milliners	120	130	1.1
H513 Shoe repairers and shoemakers	10	10	1.0
H514 Jewellers, watch repairers and related occupations	50	50	1.1
H52 Printing press operators, commercial divers and other trades and related occupations, n.e.c.	310	310	0.3
H521 Printing press operators	80	70	-2.7
H522 Commercial divers	30	30	0.7
H523 Other trades and related occupations	210	220	1.5
H53 Other installers, repairers and servicers	820	810	-0.3
H531 Residential and commercial installers and servicers	490	460	-1.0
H532 Waterworks and gas maintenance workers	40	40	-0.2
H533 Automotive mechanical installers and servicers	150	160	1.0
H534 Pest controllers and fumigators	20	20	0.5
H535 Other repairers and servicers	120	130	1.1
H6 Heavy equipment and crane operators, including drillers	1,850	1,740	-1.2
H61 Heavy equipment operators	1,630	1,530	-1.2
H611 Heavy equipment operators (except crane)	1,490	1,380	-1.4
H612 Public works maintenance equipment operators	150	160	0.6
H62 Crane operators, drillers and blasters	210	200	-0.9

Fraser Valley College Region

Projected Annual Growth Rates in Occupational Demand

	Estimated Employment		Avg Annual % Chng Over 5 Years
	2008	2013	2008 to 2013
H621 Crane operators	130	130	-0.4
H622 Drillers and blasters - Surface mining, quarrying and construction	60	50	-1.5
H623 Water well drillers	30	20	-2.0
H7 Transportation equipment operators and related workers, excluding labourers	5,540	5,830	1.0
H71 Motor vehicle and transit drivers	4,960	5,220	1.0
H711 Truck drivers	3,400	3,560	0.9
H712 Bus drivers and subway and other transit operators	490	520	1.1
H713 Taxi and limousine drivers and chauffeurs	290	300	1.2
H714 Delivery and courier service drivers	790	840	1.2
H72 Train crew operating occupations	210	230	1.2
H721 Railway and yard locomotive engineers	90	100	1.2
H722 Railway conductors and brakemen/women	120	130	1.3
H73 Other transport equipment operators and related workers	360	380	1.2
H731 Railway yard workers	10	10	1.4
H732 Railway track maintenance workers	80	80	1.2
H733 Deck crew, water transport	140	150	1.2
H734 Engine room crew, water transport	10	10	1.1
H735 Lock and cable ferry operators and related occupations	50	60	1.0
H736 Boat operators	30	30	1.3
H737 Air transport ramp attendants	40	40	1.3
H8 Trades helpers, construction and transportation labourers and related occupations	4,740	4,660	-0.3
H81 Longshore workers and material handlers	1,640	1,760	1.5
H811 Longshore workers	90	90	1.1
H812 Material handlers	1,550	1,660	1.5
H82 Trades helpers and labourers	2,800	2,590	-1.5
H821 Construction trades helpers and labourers	2,680	2,470	-1.6
H822 Other trades helpers and labourers	120	120	0.4
H83 Public works and other labourers, n.e.c.	310	320	0.8
H831 Public works and maintenance labourers	260	270	0.7
H832 Railway and motor transport labourers	60	60	1.1
I Occupations unique to primary industry	9,240	9,570	0.7
I0 Occupations unique to agriculture, excluding labourers	6,120	6,310	0.6
I01 Contractors, operators and supervisors in agriculture, horticulture and aquaculture	3,320	3,430	0.6
I011 Farmers and farm managers	2,740	2,830	0.6
I012 Agricultural and related service contractors and managers	10	10	0.6
I013 Farm supervisors and specialized livestock workers	170	170	0.6
I014 Nursery and greenhouse operators and managers	100	100	0.8
I015 Landscaping and grounds maintenance contractors and managers	120	130	0.7
I016 Supervisors, landscape and horticulture	100	100	0.7
I017 Aquaculture operators and managers	80	80	0.6
I02 Agriculture and horticulture workers	2,800	2,890	0.6
I021 General farm workers	2,110	2,170	0.6
I022 Nursery and greenhouse workers	700	720	0.7
I1 Occupations unique to forestry operations, mining, oil and gas extraction and fishing, excluding labourers	690	730	1.2
I11 Supervisors, logging and forestry	50	60	2.4
I111 Supervisors, logging and forestry	50	50	2.3

Fraser Valley College Region

Projected Annual Growth Rates in Occupational Demand

	Estimated Employment		Avg Annual % Chng Over 5 Years
	2008	2013	2008 to 2013
I12 Supervisors, mining, oil and gas	70	70	-0.9
I121 Supervisors, mining and quarrying	50	50	-1.2
I122 Supervisors, oil and gas drilling and service	20	20	0.2
I13 Underground miners, oil and gas drillers and related workers	80	80	-0.9
I131 Underground production and development miners	50	50	-1.2
I132 Oil and gas well drillers, servicers, testers and related workers	30	30	-0.2
I14 Mine service workers and operators in oil and gas drilling	50	50	-0.1
I141 Underground mine service and support workers	20	20	-0.3
I142 Oil and gas well drilling workers and services operators	20	20	-0.3
I15 Logging machinery operators	140	170	2.9
I151 Logging machinery operators	140	160	2.9
I16 Logging and forestry workers	210	230	1.7
I161 Chain saw and skidder operators	110	120	2.2
I162 Silviculture and forestry workers	100	110	1.1
I17 Fishing vessel masters and skippers and fishermen/women	60	60	0.6
I171 Fishing masters and officers	10	10	0.9
I172 Fishing vessel skippers and fishermen/women	60	60	0.6
I18 Other fishing and trapping occupations	20	20	0.8
I181 Fishing vessel deckhands	20	20	0.6
I182 Trappers and hunters	-	-	-
I2 Primary production labourers	2,430	2,520	0.8
I21 Primary production labourers	2,420	2,520	0.8
I211 Harvesting labourers	470	490	0.6
I212 Landscaping and grounds maintenance labourers	1,560	1,620	0.8
I213 Aquaculture and marine harvest labourers	100	100	0.7
I214 Mine labourers	30	20	-1.4
I215 Oil and gas drilling, servicing and related labourers	50	50	-0.7
I216 Logging and forestry labourers	220	240	2.0
J Occupations unique to processing, manufacturing and utilities	6,940	7,540	1.7
J0 Supervisors in manufacturing	440	490	2.0
J01 Supervisors, processing occupations	340	380	2.1
J011 Supervisors, mineral and metal processing	40	50	1.8
J012 Supervisors, petroleum, gas and chemical processing and utilities	50	50	1.0
J013 Supervisors, food, beverage and tobacco processing	60	70	1.2
J014 Supervisors, plastic and rubber products manufacturing	30	30	2.7
J015 Supervisors, forest products processing	150	170	2.7
J016 Supervisors, textile processing	-	-	-
J02 Supervisors, assembly and fabrication	100	110	1.9
J021 Supervisors, motor vehicle assembling	20	20	1.7
J022 Supervisors, electronics manufacturing	10	10	1.7
J023 Supervisors, electrical products manufacturing	10	10	1.9
J024 Supervisors, furniture and fixtures manufacturing	20	20	1.8
J025 Supervisors, fabric, fur and leather products manufacturing	-	-	-
J026 Supervisors, other mechanical and metal products manufacturing	20	20	2.1
J027 Supervisors, other products manufacturing and assembly	20	20	2.1
J1 Machine operators in manufacturing	3,000	3,230	1.6
J11 Central control and process operators in manufacturing and processing	140	150	1.4

Fraser Valley College Region

Projected Annual Growth Rates in Occupational Demand

	Estimated Employment		Avg Annual % Chng Over 5 Years
	2008	2013	2008 to 2013
J111 Central control and process operators, mineral and metal processing	60	70	1.6
J112 Petroleum, gas and chemical process operators	70	80	1.5
J113 Pulping control operators	-	-	-
J114 Papermaking and coating control operators	10	10	0.8
J12 Machine operators and related workers in metal and mineral products processing	180	190	1.7
J121 Machine operators, mineral and metal processing	60	60	1.4
J122 Foundry workers	20	20	2.1
J123 Glass forming and finishing machine operators and glass cutters	30	30	2.0
J124 Concrete, clay and stone forming operators	40	40	1.8
J125 Inspectors and testers, mineral and metal processing	30	30	1.5
J13 Machine operators and related workers in chemical, plastic and rubber processing	230	250	1.8
J131 Chemical plant machine operators	30	30	1.9
J132 Plastics processing machine operators	80	90	2.5
J133 Rubber processing machine operators and related workers	30	30	2.2
J134 Water and waste plant operators	80	80	0.4
J14 Machine operators and related workers in pulp and paper production and wood processing	760	860	2.6
J141 Sawmill machine operators	400	460	2.8
J142 Pulp mill machine operators	10	10	1.0
J143 Papermaking and finishing machine operators	10	10	1.4
J144 Other wood processing machine operators	130	150	2.6
J145 Paper converting machine operators	10	10	1.3
J146 Lumber graders and other wood processing inspectors and graders	190	220	2.6
J15 Machine operators and related workers in textile processing	60	70	1.3
J151 Textile fibre and yarn preparation machine operators	-	-	-
J152 Weavers, knitters and other fabric-making occupations	40	40	1.5
J153 Textile dyeing and finishing machine operators	10	10	0.5
J154 Textile inspectors, graders and samplers	-	-	-
J16 Machine operators and related workers in fabric, fur and leather products manufacturing	160	170	1.5
J161 Sewing machine operators	140	150	1.5
J162 Fabric, fur and leather cutters	10	10	1.5
J163 Hide and pelt processing workers	-	-	-
J164 Inspectors and testers, fabric, fur and leather products manufacturing	-	-	-
J17 Machine operators and related workers in food, beverage and tobacco processing	880	930	1.2
J171 Process control and machine operators, food and beverage processing	370	390	1.2
J172 Industrial butchers and meat cutters, poultry preparers and related workers	110	120	1.2
J173 Fish plant workers	320	340	1.3
J174 Tobacco processing machine operators	-	-	-
J175 Testers and graders, food and beverage processing	70	70	1.2
J18 Printing machine operators and related occupations	210	200	-1.3
J181 Printing machine operators	60	60	-2.0
J182 Camera, platemaking and other pre-press occupations	30	20	-3.7
J183 Binding and finishing machine operators	40	30	-3.4
J184 Photographic and film processors	90	90	0.9
J19 Machining, metalworking, woodworking and related machine operators	390	430	1.9
J191 Machining tool operators	50	60	2.1
J192 Forging machine operators	10	10	2.6

Fraser Valley College Region

Projected Annual Growth Rates in Occupational Demand

	Estimated Employment		Avg Annual % Chng Over 5 Years
	2008	2013	2008 to 2013
J193 Woodworking machine operators	200	220	1.8
J194 Metalworking machine operators	110	120	2.1
J196 Other metal products machine operators	20	20	1.5
J197 Other products machine operators	-	-	-
J2 Assemblers in manufacturing	1,220	1,330	1.9
J21 Mechanical, electrical and electronics assemblers	320	350	1.8
J211 Aircraft assemblers and aircraft assembly inspectors	10	10	1.7
J212 Motor vehicle assemblers, inspectors and testers	100	110	1.6
J213 Electronics assemblers, fabricators, inspectors and testers	60	70	1.8
J214 Assemblers and inspectors, electrical appliance, apparatus and equipment manufacturing	40	40	1.9
J215 Assemblers, fabricators and inspectors, industrial electrical motors and transformers	10	10	1.8
J216 Mechanical assemblers and inspectors	100	110	1.9
J217 Machine operators and inspectors, electrical apparatus manufacturing	-	-	-
J22 Other assembly and related occupations	890	980	1.9
J221 Boat assemblers and inspectors	110	120	1.7
J222 Furniture and fixture assemblers and inspectors	220	230	1.7
J223 Other wood products assemblers and inspectors	170	190	2.5
J224 Furniture finishers and refinishers	100	100	1.4
J225 Plastic products assemblers, finishers and inspectors	100	110	2.6
J226 Painters and coaters, industrial	90	100	1.4
J227 Plating, metal spraying and related operators	10	10	2.0
J228 Other assemblers and inspectors	100	110	1.9
J3 Labourers in processing, manufacturing and utilities	2,280	2,490	1.8
J31 Labourers in processing, manufacturing and utilities	2,270	2,480	1.8
J311 Labourers in mineral and metal processing	90	100	1.9
J312 Labourers in metal fabrication	120	130	2.1
J313 Labourers in chemical products processing and utilities	60	70	2.2
J314 Labourers in wood, pulp and paper processing	730	820	2.6
J315 Labourers in rubber and plastic products manufacturing	110	120	2.6
J316 Labourers in textile processing	30	30	1.7
J317 Labourers in food, beverage and tobacco processing	560	600	1.2
J318 Labourers in fish processing	180	190	1.3
J319 Other labourers in processing, manufacturing and utilities	410	430	1.2