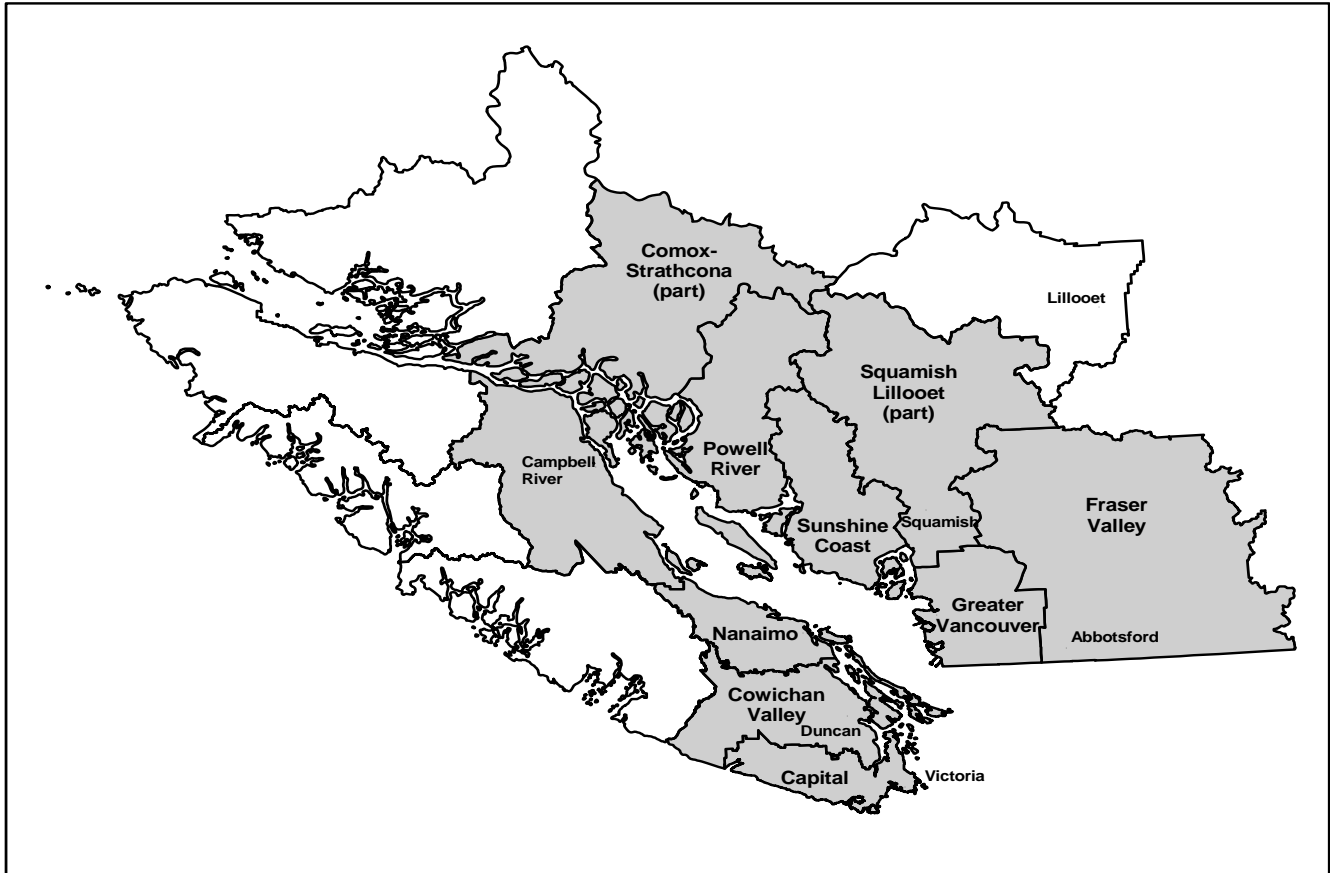


STATISTICAL PROFILE



	<u>2006 CENSUS POPULATION</u>		<u>LAND AREA</u>		<u>POPULATION DENSITY</u>
	<u>Number</u>	<u>% of Region</u>	<u>Sq. Km.</u>	<u>% of Region</u>	<u>Persons per Sq.Km.</u>
Vancouver, C	578,041	18.6%	114.7	0.2%	5,039.2
Surrey, C	394,976	12.7%	317.2	0.5%	1,245.2
Burnaby, C	202,799	6.5%	89.1	0.1%	2,275.6
Richmond, C	174,461	5.6%	128.8	0.2%	1,354.9
Abbotsford, C	123,864	4.0%	359.4	0.5%	344.7
Coquitlam, C	114,565	3.7%	121.7	0.2%	941.4
Saanich, DM	108,265	3.5%	103.4	0.2%	1,046.6
Delta, DM	96,723	3.1%	183.7	0.3%	526.5
Langley, DM	93,726	3.0%	306.9	0.5%	305.4
North Vancouver, DM	82,562	2.7%	160.7	0.2%	513.9
Nanaimo, C	78,692	2.5%	89.3	0.1%	881.2
Victoria, C	78,057	2.5%	19.7	0.0%	3,966.3
Rest of Region	984,156	31.6%	64,604.5	97.0%	15.2
Total Region	3,110,887	100.0%	66,599.1	100.0%	46.7
Total BC	4,113,487		925,344.7		4.4
Region as a % of BC	75.6%		7.2%		

NOTE: BC Total Land Area for RD's is different to that of LHA's due to different accounting for water bodies.
 Please see the Glossary at <http://www.bcstats.gov.bc.ca/data/sep/index.asp>.

Georgia Basin and the Rest of British Columbia

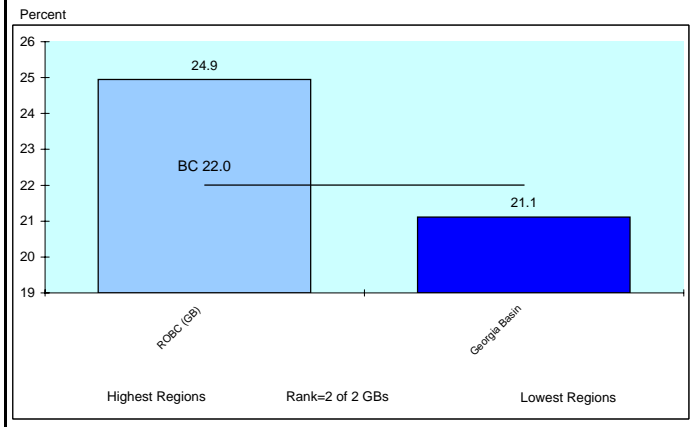
DEMOGRAPHIC PROFILE

2008

AGE STRUCTURE

	Georgia Basin		Georgia Basin		B.C.	
	2008	2008	2018	2008	2018	2018
Population Estimate			(Percent Distribution)			
0-17 years	636,307	19.1	17.0	19.5	18.0	
18-24 years	325,288	9.8	8.0	9.6	7.8	
25-64 years	1,894,290	57.0	57.5	56.4	56.1	
65+ years	468,619	14.1	17.5	14.5	18.1	
Total	3,324,503	100.0	100.0	100.0	100.0	
Dependency Rate (%)						
Child		28.7	25.9	29.5	28.2	
Elderly		21.1	26.7	22.0	28.3	
Total		49.8	52.6	51.5	56.5	

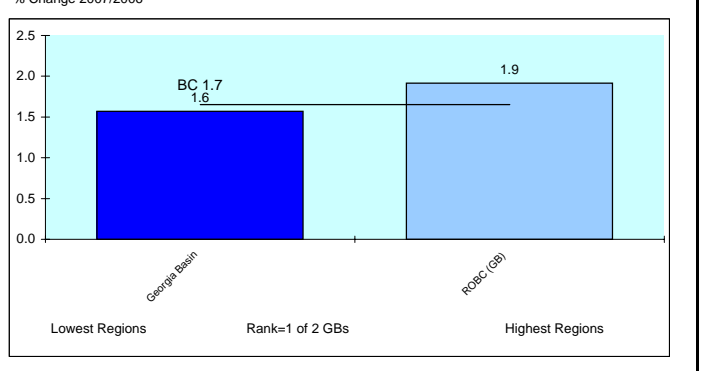
Elderly Dependency Rate - 2008



POPULATION GROWTH

	Georgia Basin	B.C.
Annual Average Population Percent Change		
Last year	1.6	1.7
Last 5 years	1.4	1.3
Last 10 years	1.3	1.0

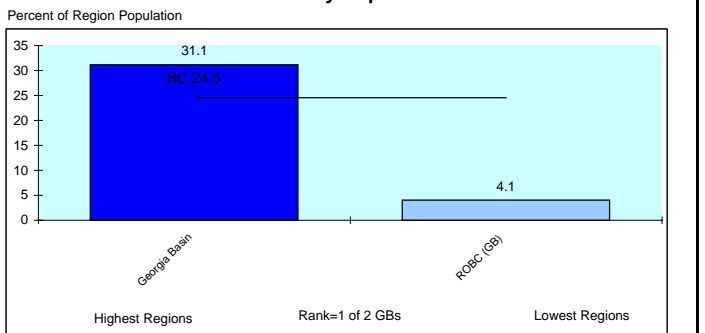
Population Growth



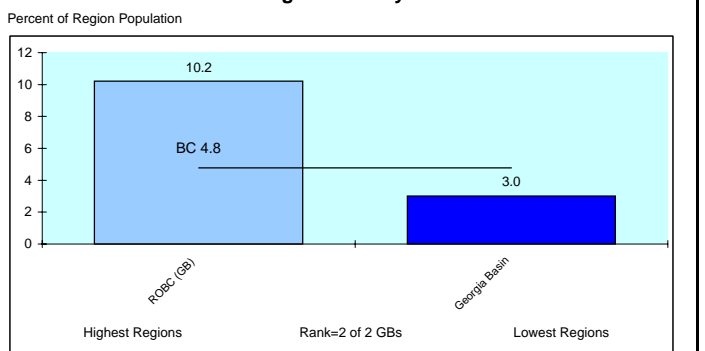
ETHNIC IDENTITY

	Georgia Basin	Georgia Basin	B.C.
2006		(Percent Distribution)	
Total Visible Minorities	968,211	31.1	24.5
Single Origins	943,884	30.3	28.1
Chinese	400,482	12.9	9.9
South Asian	246,278	7.9	6.4
Filipino	84,586	2.7	6.4
Japanese	30,809	1.0	0.9
Other	181,729	5.8	4.6
Multiple Origins	24,327	0.8	0.6
Total Aboriginal People	93,626	3.0	4.8
Rest of Population	2,049,050	65.9	70.7
Total	3,110,887	100.0	100.0

Visible Minority Population - 2006



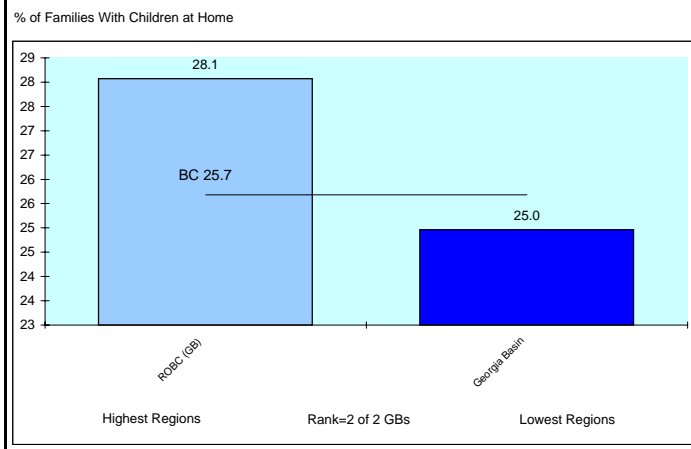
Aboriginal Identity - 2006



FAMILY STRUCTURE

	Georgia Basin	Georgia Basin	B.C.
Total Census Families - 2006	866,149	(Percent Distribution)	
No Children at Home	340,926	39.4	41.3
Children at Home	525,228	60.6	58.7
Families with Children			
Couples	394,105	75.0	74.3
Lone Parents	131,109	25.0	25.7
Avg Number of Children		1.8	1.8
		(% of Total in Economic Families)	
Unattached Individuals	470,518	18.1	17.9

Lone Parent Families as a % of Families With Children at Home - 2006



INDICATORS OF ECONOMIC HARDSHIP

INCOME LEVELS

	Georgia Basin	B.C.
Average Family Income 2005 (\$) (see Glossary)		
All Census Families	83,588	80,511
Husband/Wife	89,967	86,574
Female Lone Parent	45,407	43,491
Income Distribution Among Families		
< \$20,000	8.1	8.0
\$20,000 - \$79,999	52.3	53.8
\$80,000+	39.6	38.1
Incidence of Low Income in Economic Families	14.6	13.3
Income Inequality Measure		
Income Share of Bottom Half (poorest) of Households*	20.3	20.7

Income Share of Poorest Households* - 2005

Region	Percent
Georgia Basin	20.3
BC	20.7
ROBC (GB)	22.4

* The proportion of each region's household income that accrues to households earning less than the median income. In a situation of perfect equality, the bottom half (poorest) households would receive 50% of the total income.

HOUSING COSTS

	Georgia Basin	B.C.
Households (Occupied non-farm non-reserve) - 2006		
% Renting	32.6	30.4
Gross Rent or Major Monthly Payment (\$)		
Tenants	860	828
Owners	1146	1059
% Paying 30% or More of Their Income on Housing Costs		
Tenants	43.8	43.4
Owners	24.9	22.7
Total	31.0	29.0

Households Paying 30% or More on Housing Costs - 2005

Region	Percent of Households
Georgia Basin	29.0
ROBC (GB)	22.6

INCOME ASSISTANCE

	Georgia Basin	B.C.
% of Population Receiving IA Benefits* - September 2008		
Total (0-64)	3.5	3.8
Children (0-18)	3.0	3.3
Youth (19-24)	2.6	3.0
By Duration		
>1 Year	2.5	2.7
<1 Year	1.0	1.2
% of Income Assistance Caseload that are Single Parent Families*	12.9	13.9
% of Population 19-64 on Income Assistance* and are Employable		
Total	0.7	0.8
By Duration		
>1 Year	0.3	0.3
<1 Year	0.5	0.5

* All Income Assistance recipients include the disabled but exclude Aboriginal persons on reserve.

	Georgia Basin	B.C.
% of OAS Recipients Receiving Max. Gov't Income Supp. - 2008		
Total	3.8	3.3
Males	3.2	2.7
Females	3.8	3.3

% of Population 19-64 Receiving Income Assistance* and are Employable - September 2008

Region	Percent of Population 19-65
ROBC (GB)	1.1
Georgia Basin	0.7

INCOME DEPENDENCY

	Georgia Basin	B.C.
Composition of Total Income - 2005		
Employment	77.2	77.1
Government Transfers	9.1	9.6
Other	13.7	13.4
Income Dependency 2005		
Forestry	4%	7%
Mining	2%	3%
Construction	8%	8%
Gov't transfer payments	14%	15%
Tourism	5%	6%
Public Sector	27%	26%

Income Dependency on Forestry, Mining & Fishing* - 2005

Region	Percent
ROBC (GB)	21.6
Georgia Basin	6.0

BC data is a Weighted Average of LHAs/RDs

*Heavy dependency on the primary sector increases the vulnerability of a region to swings in the economic cycle resulting in economic hardship

INDICATORS OF LABOUR MARKET ISSUES

LABOUR DEMAND

	Georgia Basin	B.C.
Labour Force 2006		
Industrial Structure (% Distribution)		
Goods		
Primary	2.7	4.4
Manufacturing	7.1	7.6
Construction	8.1	8.6
Services		
Non-Government	76.9	74.4
Government	5.2	5.0
	100.0	100.0
Occupational Structure (% Distribution)		
Management:	11.0	10.5
Professional Occupations in:		
Business & Finance	2.8	2.5
Natural & Applied Sciences	1.5	1.5
Health	3.9	3.4
Social sciences (excl. teachers)	2.9	2.9
Teachers	2.8	2.7
Art & Culture	1.3	1.3
Total	15.3	14.4
Technical Trades & Assorted Other High Skilled Occupations in:		
Finance & Insurance Admin.	2.4	2.2
Techs In Natural & Appl. Sciences	3.9	3.7
Techs. In Health	2.2	2.2
Paraprofs. in Soc Sci Educ etc	1.7	1.5
Techs in Art Culture & Rec.	2.2	2.0
Skilled Sales & Service	4.9	4.7
Trades & Skilled Transp & Equip Ops.	11.5	12.8
Total	28.7	29.1
Intermediate & Lesser Skilled Occups*	45.1	46.0

* High Skilled Occupations in Primary Manufacturing and Protective Services could not be separated out so are included in Intermediate & Lesser Skilled Occupations.

LABOUR SUPPLY

	Georgia Basin	B.C.
% of Population 20+ With Post Secondary Qualifications - 2006		
Total	64.1	61.8
With Post Secondary Certificate or Diploma	30.0	31.5
With University Degree	27.5	24.1
% Distribution by Field of Study		
Educational, Recreational & Counselling	7.1	7.5
Fine & Applied Arts	4.7	4.2
Humanities & Related	6.2	5.6
Social Sciences & Related	11.4	10.5
Commerce, Managmnt & Business Admin	21.5	21.0
Agricultural & Biological Sciences/Tech	3.8	3.5
Engineering & Applied Sciences	4.6	4.1
Engineering & Applied Science Tech/Trades	19.8	21.1
Health Professions, Sciences & Tech	13.7	14.2
Mathematics & Physical Sciences	5.1	5.5
No Specialization & All Other n.e.c	2.0	2.6
	100.0	100.0

% of Population 20+ With a University Degree - 2006	
BC	24.1
Georgia Basin	27.5

UNEMPLOYMENT

	Georgia Basin	B.C.
Employment Insurance Beneficiaries Sept. 2008		
Total Beneficiaries 19-64 Years of Age	47,930	69,154
Percent Female	67.2	63.6
Percent 19-24 Years Old	10.0	11.4
Total Beneficiaries as a Percent of Population 19-64		
Sep /08	2.2	2.4
Jun /08	2.2	2.5
Mar /08	2.4	2.9
Dec /07	2.4	3.1
Sep /07	2.1	2.2
Most recent 4 quarter average	2.3	2.8

EI Beneficiaries - 4 Quarter Average to September 2008	
BC	2.8
Georgia Basin	2.3

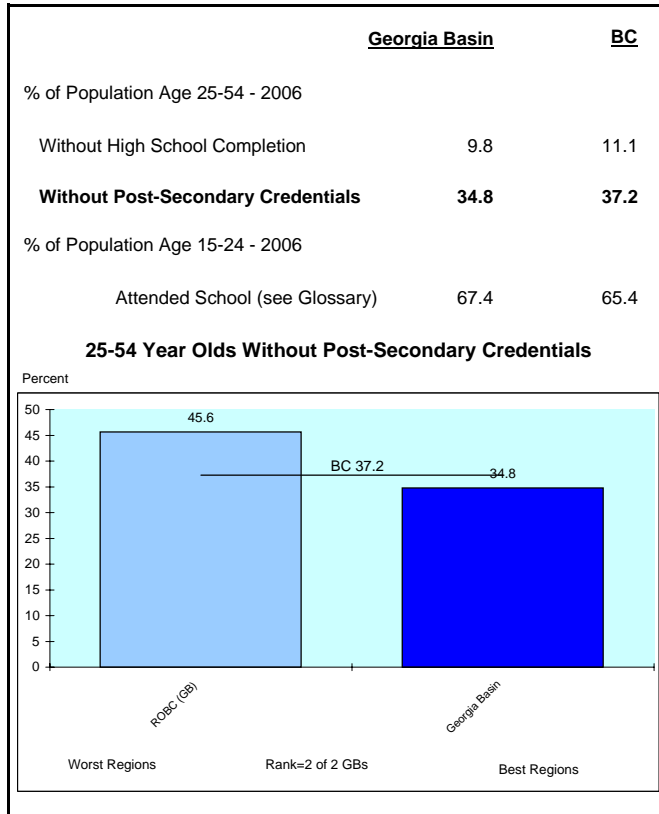
OTHER

	Georgia Basin	B.C.
Labour Force 2006		
Participation Rate		
Males	70.9	70.7
Females	61.0	60.7
Total	65.8	65.6
% Full Year, Full Time Workers	47.2	46.5
% Self Employed	13.9	14.1
Average Employment Income (\$) - 2005	35,915	34,978
Average Employment Income of Full-Year Full-Time Workers (\$)		
Males	58,723	57,772
Females	42,407	41,073
Ratio of Female to Male Income	72.2	71.1

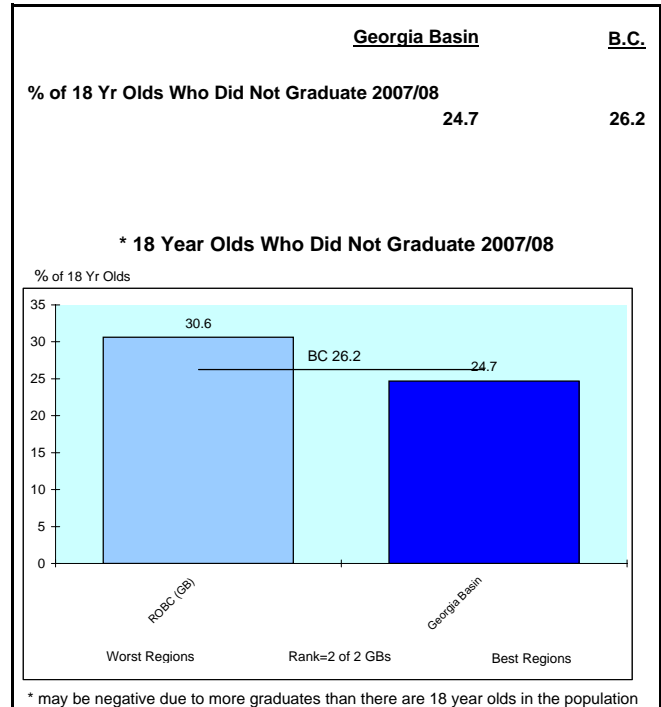
Average Employment Income (\$) - 2005	
BC	34,978
Georgia Basin	35,915

INDICATORS OF EDUCATION CONCERNS

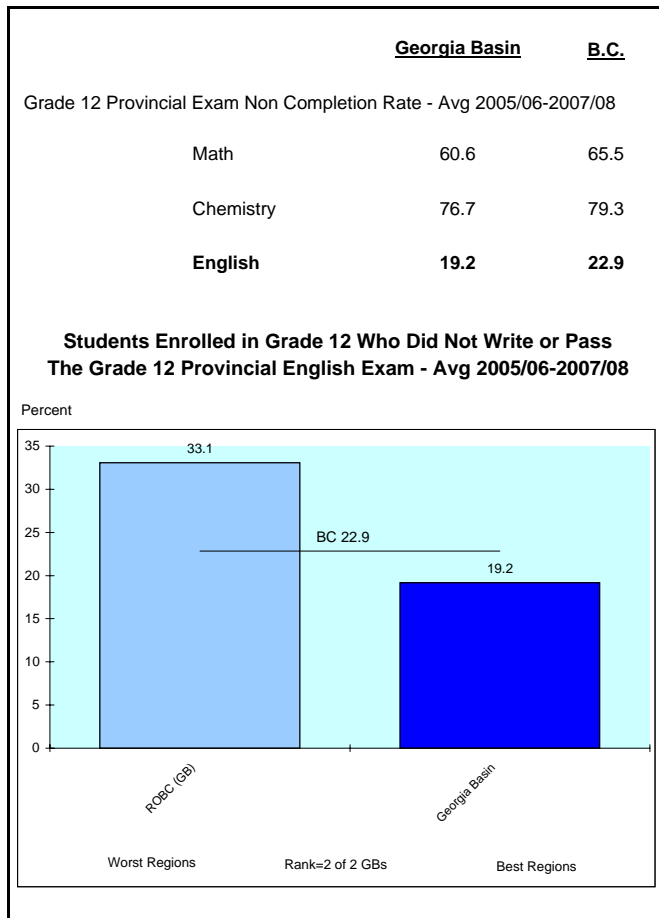
GENERAL EDUCATION



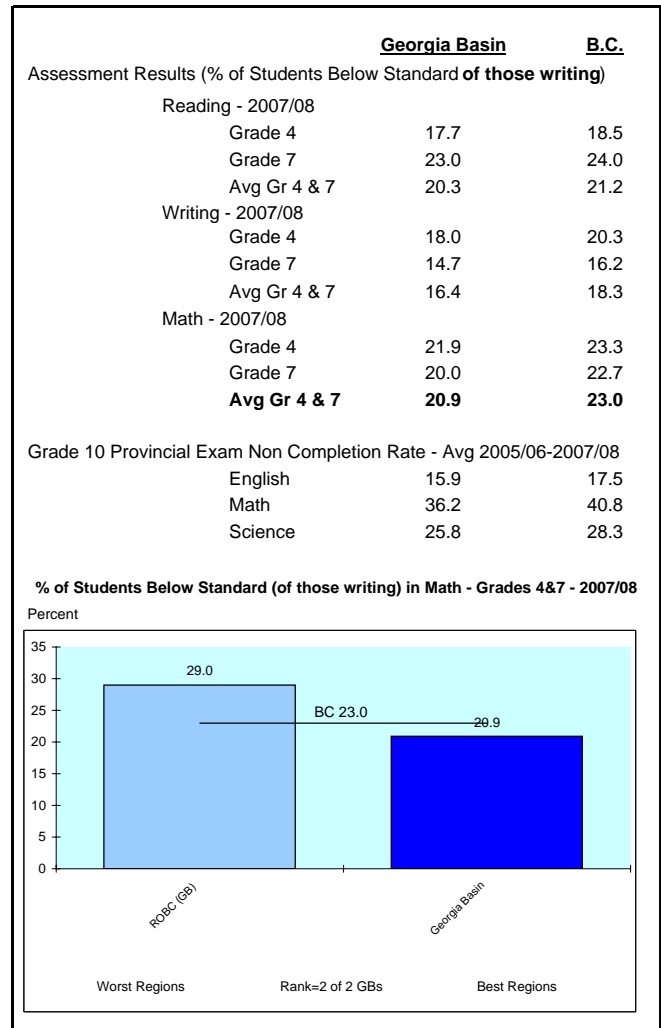
HIGH SCHOOL



PROVINCIAL EXAMS



TEST SCORES



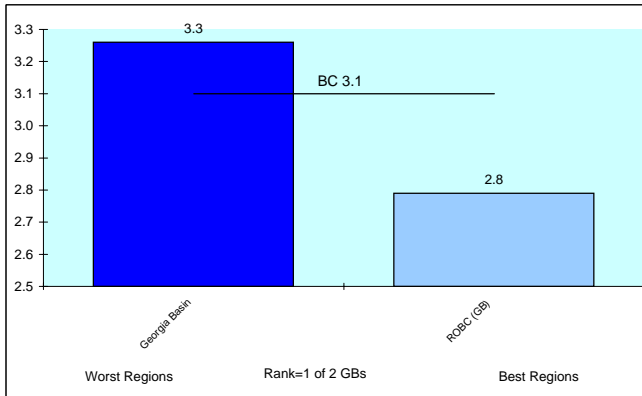
INDICATORS OF CRIME

SERIOUS CRIME

	Georgia Basin	B.C.
Serious Crime Rate - Avg 2004-2006		
Violent	3.3	3.1
Property	11.9	11.7
Total Serious	15.1	14.8
Number of Serious Crimes Per Police Officer	10.7	10.9
Serious Juvenile (Age 12-17) Crime Rate - Avg 2004-2006		
Violent	2.4	2.5
Property	1.3	2.0
Total Serious	3.7	4.5

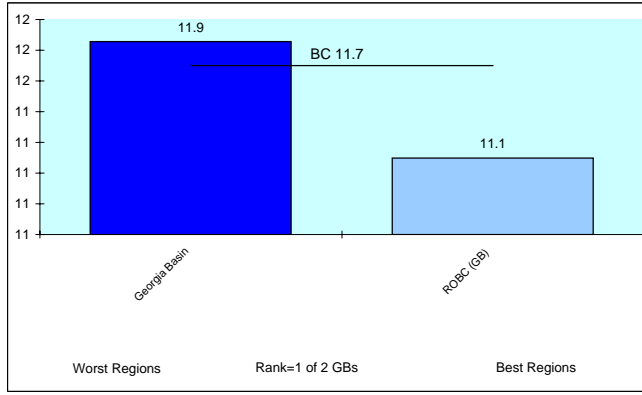
Serious Violent Crime Rate - 2004-2006

Offences per 1,000 Population



Serious Property Crime Rate - 2004-2006

Offences per 1,000 Population



OTHER INDICATORS OF CRIME

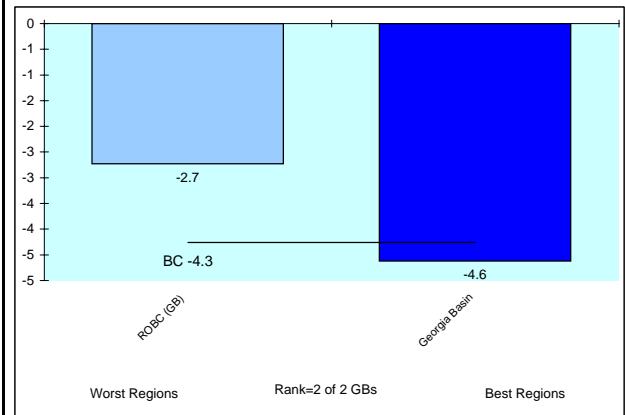
	Georgia Basin	B.C.
Crime Rate - Avg 2004-2006		
Motor Vehicle Theft	8.6	8.0

CHANGE IN CRIME RATE

	Georgia Basin	B.C.
Change in Serious Crime Rate - Avg 2004-06 / Avg 2001-03		
Violent	7.5	8.0
Property	-7.6	-7.1
Total Serious	-4.6	-4.3

Change in Total Serious Crime Rate

% Change Avg 04-06/Avg 01-03

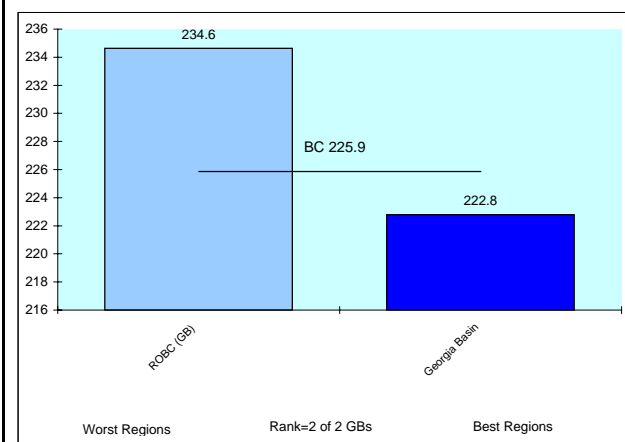


SERIOUS DRUG CRIME

	Georgia Basin	B.C.
Indicators of Serious Drug Crime - Avg 2004-2006		
Non-Cannabis Drug Offences (Offences per 100,000 Pop)	222.8	225.9
Juvenile (12-17) Non-Cannabis Drug Charges (Charges per 100,000 Pop Age 12-17)	48.5	47.0
Illicit Drug Deaths - Avg 2005-2007 (Deaths per 100,000 Pop Age 19-64)	7.2	7.2

Non-Cannabis Drug Offences - Avg 2004-2006

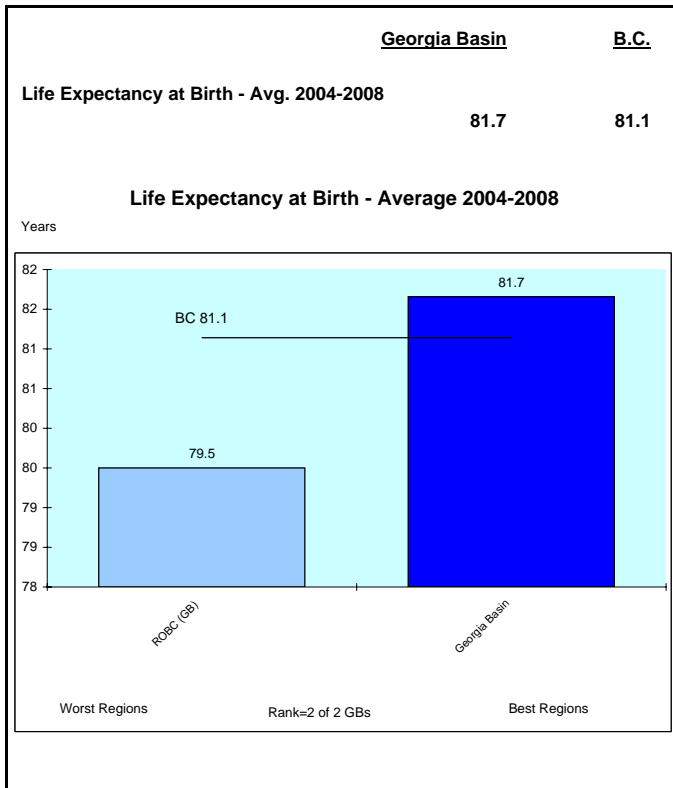
Offences per 100,000



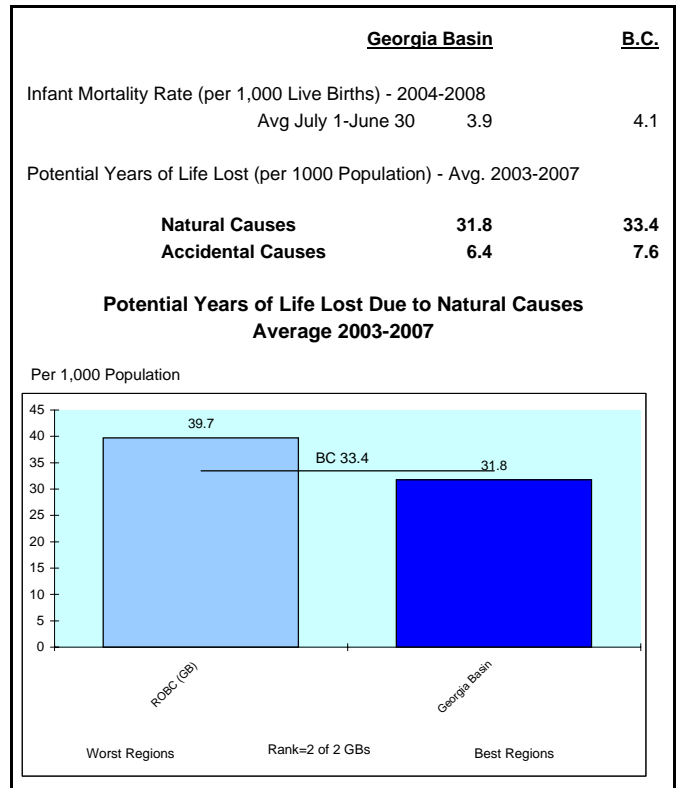
NOTE: Crime Rate = # of Offences(Charges for Juveniles) Per 1,000 Population unless otherwise noted.

INDICATORS OF HEALTH PROBLEMS

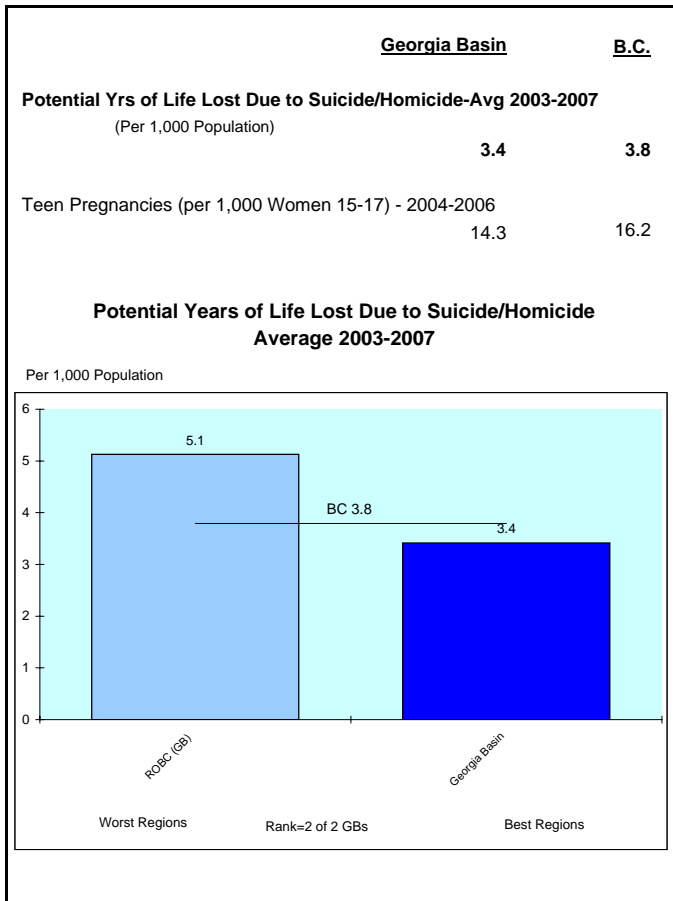
GENERAL HEALTH



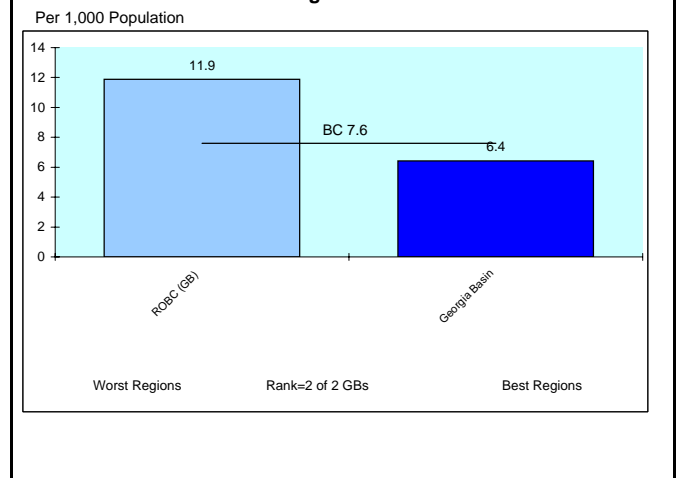
PHYSICAL HEALTH



MENTAL HEALTH



Potential Years of Life Lost Due to Accidental Causes Average 2003-2007



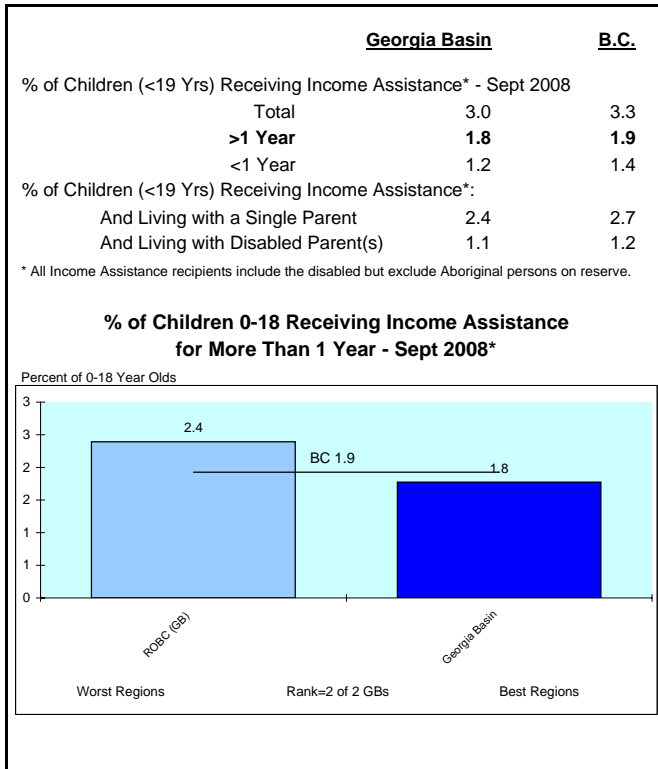
ALCOHOL SALES*

	Georgia Basin	B.C.
Per Capita Alcohol Sales - 2008 (Per Population Age 19+)		
Dollars Spent (\$)	736	805
Litres Consumed	99	112
% Distribution of Litres Sold		
Spirits	6.6	6.5
Wine	16.3	14.5
Beer/Cider/Coolers	77.1	78.9

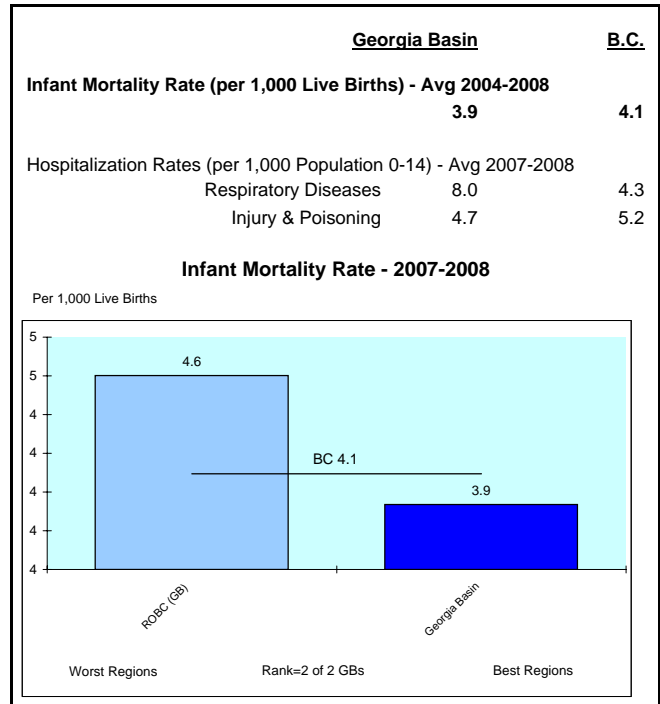
* Represents sales per resident population 19+, therefore high tourist areas will be overstated

INDICATORS OF CHILDREN AT RISK

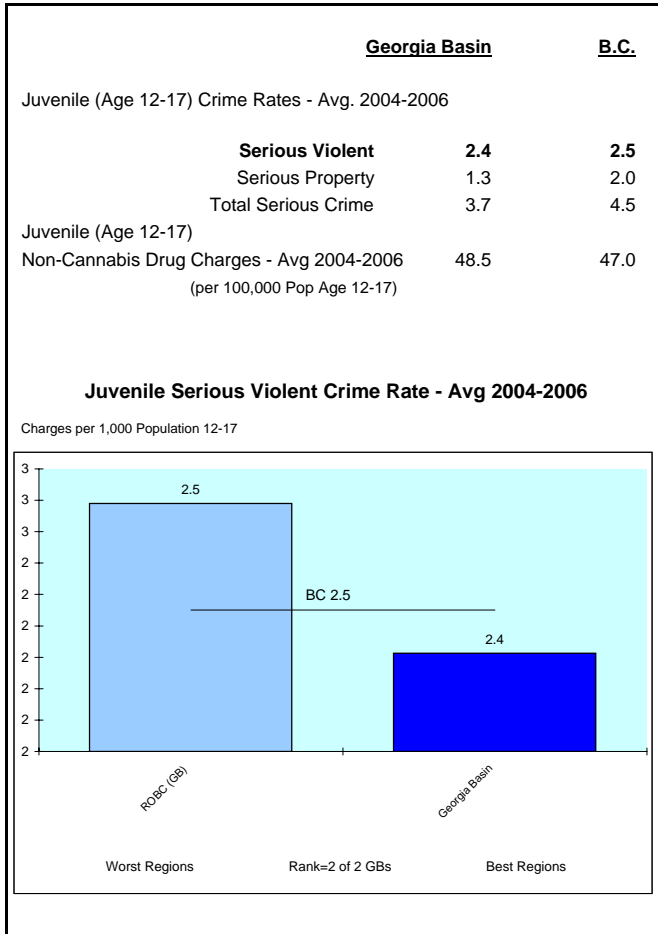
INCOME ASSISTANCE



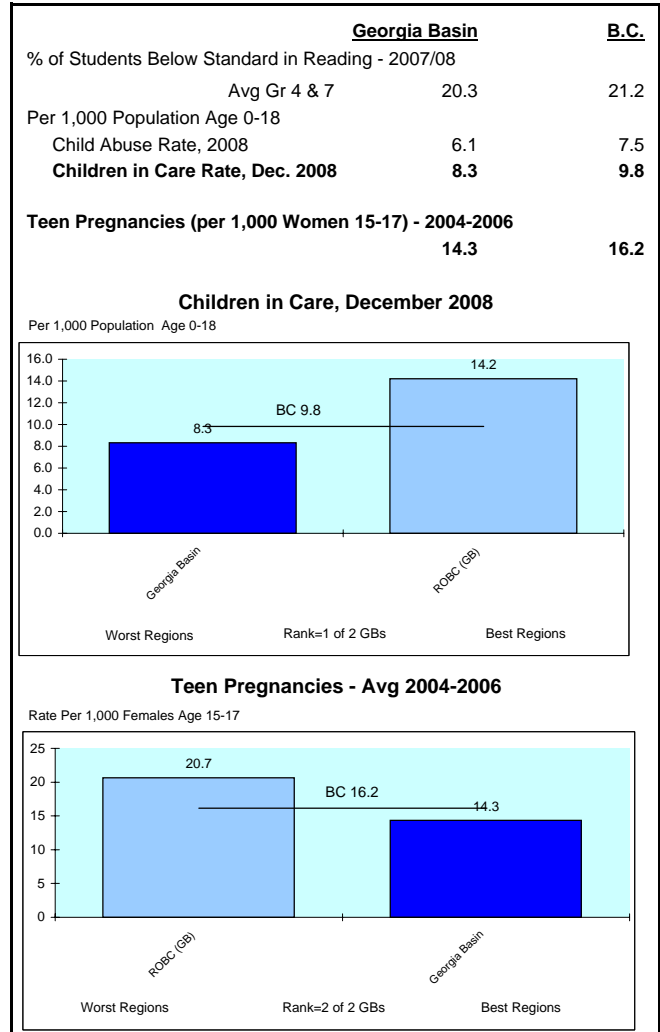
HEALTH



CRIME

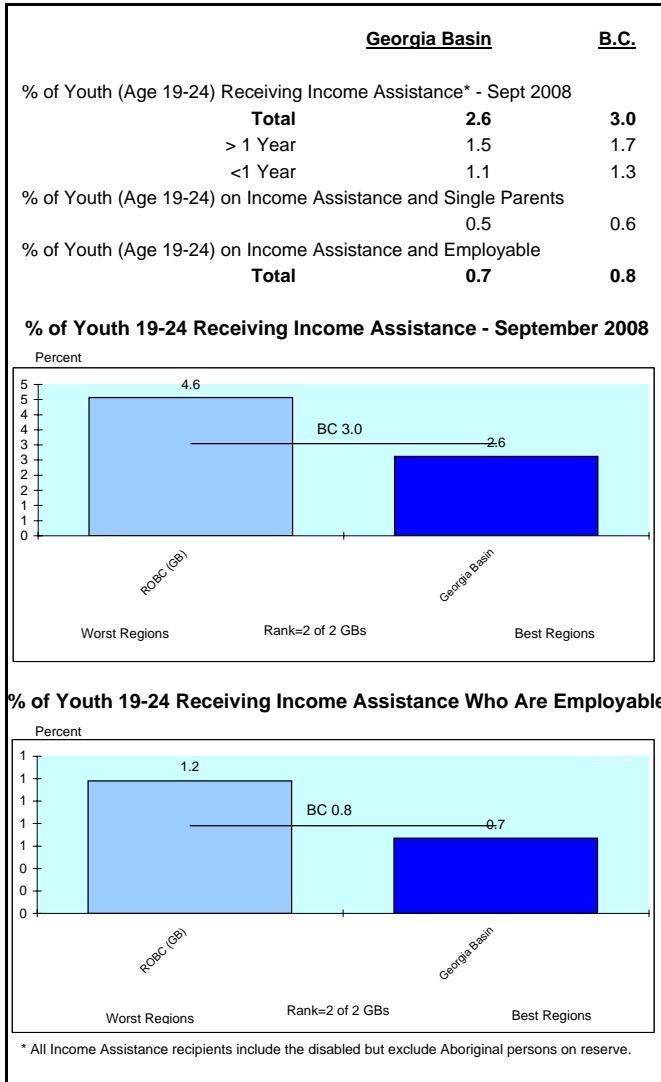


OTHER

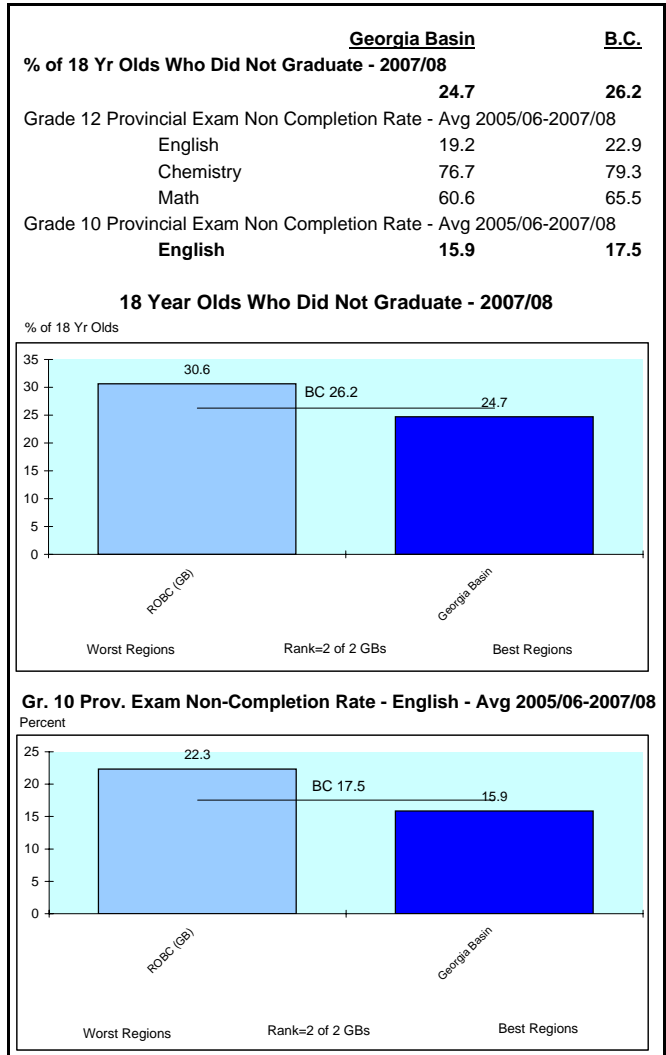


INDICATORS OF YOUTH AT RISK

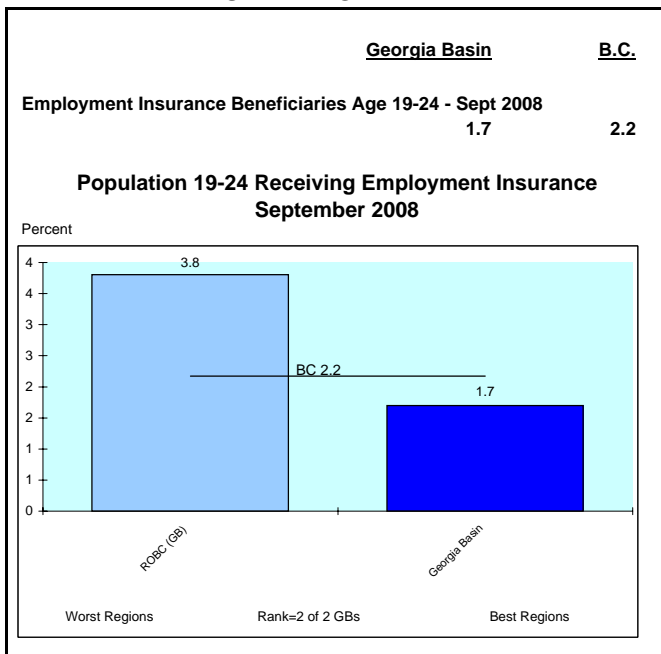
INCOME ASSISTANCE



EDUCATION



UNEMPLOYMENT



OTHER

