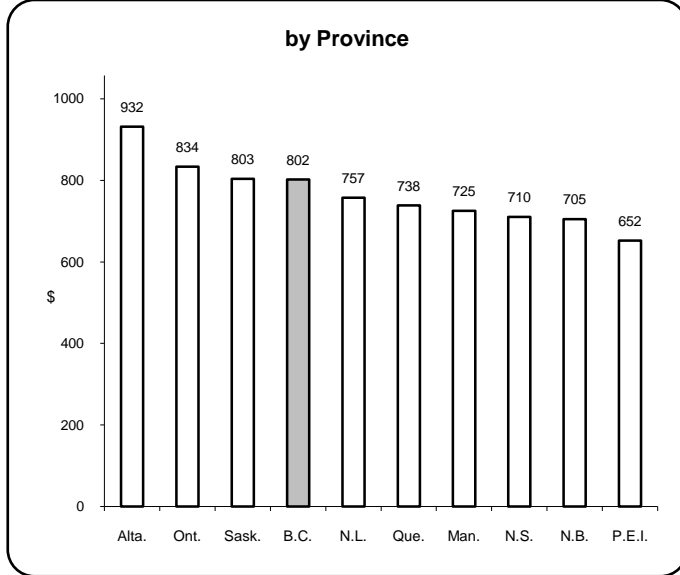
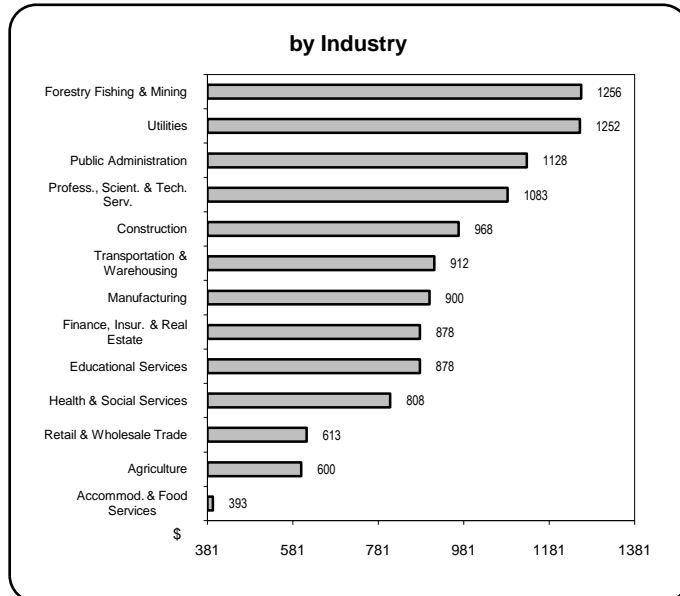
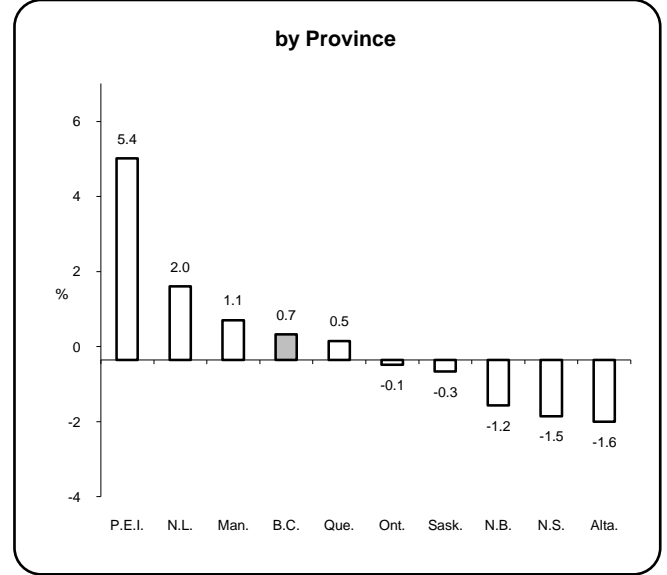


## Earnings & Employment Trends ♦ January 2010

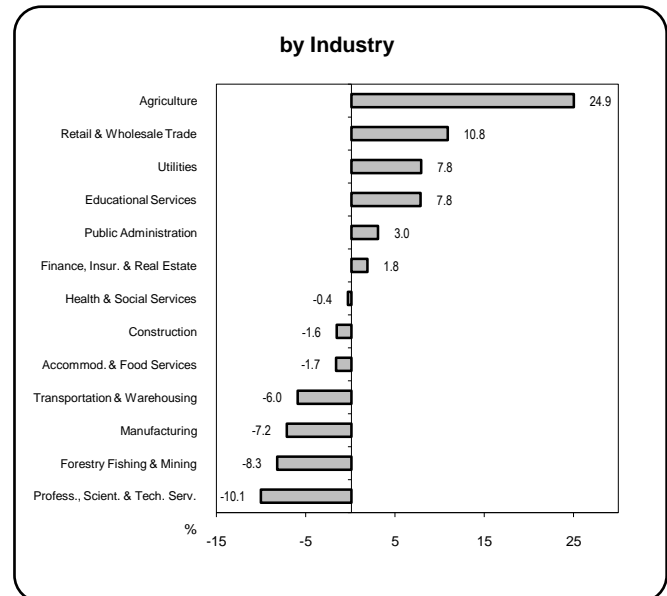
**Average Weekly Wage Rate\* - January 2010**



**Employment Growth\* - January 2010**



\* Latest 12 month average



\* Month over same month previous year (unadjusted)

Prepared by: BC Stats

Source: Statistics Canada Labour Force Survey

**Feature Article: 2009 BC Wage & Salary Survey Highlights**

## SUMMARY TRENDS

	Consumer Price Index			Average Weekly Wage Rate						Employment Growth			Unemployment Rate			
				Current Dollars			Constant Dollars			Seasonally Adjusted			Seasonally Adjusted			
	B.C.	Canada	U.S.A.	B.C.	Canada	U.S.A.	B.C.	Canada	U.S.A.	B.C.	Canada	U.S.A.	B.C.	Canada	U.S.A.	
	% Change			% Change			% Change			% Change			(%)			
2000	1.8	2.7	3.4			3.9			0.5	1.9	2.5	2.5	7.1	6.8	4.0	
2001	1.7	2.5	2.8	1.4	3.2	2.7	-0.3	0.7	-0.2	-0.5	1.2	0.0	7.7	7.2	4.7	
2002	2.4	2.2	1.6	3.1	2.2	2.6	0.7	0.0	1.0	2.3	2.4	-0.3	8.5	7.7	5.8	
2003	2.2	2.8	2.3	2.3	1.9	2.2	0.1	-0.9	0.0	2.5	2.4	0.9	8.0	7.6	6.0	
2004	2.0	1.8	2.7	0.4	2.6	2.1	-1.5	0.8	-0.5	2.4	1.8	1.1	7.2	7.2	5.5	
2005	2.0	2.2	3.4	2.6	3.5	2.9	0.6	1.2	-0.5	3.3	1.4	1.8	5.9	6.8	5.1	
2006	1.7	2.0	3.2	3.1	3.5	4.3	1.3	1.5	1.1	3.1	1.9	1.9	4.8	6.3	4.6	
2007	1.8	2.2	2.9	3.0	3.2	3.9	1.2	1.0	1.0	3.2	2.3	1.1	4.2	6.0	4.6	
2008	2.1	2.3	3.8	4.4	4.2	3.0	2.3	1.9	-0.8	2.1	1.5	-0.5	4.6	6.1	5.8	
2009	0.0	0.3	-0.4	2.5	2.8	1.5	2.5	2.5	1.9	-2.4	-1.6	-3.7	7.6	8.3	9.3	
2009	Jan	1.4	1.1	0.0	3.6	4.4	2.5	2.2	3.3	2.5	-1.7	-0.6	-2.9	6.3	7.3	7.6
	Feb	1.5	1.4	0.2	4.1	3.6	3.3	2.6	2.1	3.1	-2.2	-1.4	-3.0	7.0	8.0	8.1
	Mar	1.1	1.2	-0.4	3.8	3.7	1.4	2.7	2.4	1.8	-3.3	-1.7	-3.5	7.5	8.1	8.5
	Apr	0.3	0.4	-0.7	3.9	3.5	0.9	3.6	3.1	1.6	-2.9	-1.6	-3.6	7.6	8.1	8.9
	May	0.1	0.1	-1.3	1.6	2.3	1.3	1.5	2.2	2.6	-2.6	-1.9	-3.7	7.6	8.5	9.4
	Jun	-0.7	-0.3	-1.4	1.3	2.5	-0.5	2.0	2.7	0.9	-2.9	-1.9	-3.8	8.1	8.6	9.5
	Jul	-1.6	-0.9	-2.1	0.2	2.6	1.2	1.8	3.5	3.4	-3.2	-1.8	-3.8	7.8	8.6	9.4
	Aug	-1.1	-0.8	-1.5	3.7	2.4	2.1	4.8	3.2	3.6	-2.7	-1.7	-3.9	7.9	8.7	9.7
	Sep	-1.2	-0.9	-1.3	2.5	2.1	0.8	3.8	3.0	2.1	-1.9	-1.9	-4.3	7.3	8.3	9.8
	Oct	-0.6	0.1	-0.2	1.7	2.7	1.2	2.3	2.7	1.3	-2.0	-2.1	-4.4	8.0	8.4	10.2
	Nov	0.1	1.0	1.8	1.6	1.7	2.0	1.5	0.8	0.2	-1.3	-1.2	-3.9	8.0	8.4	10.0
	Dec	0.4	1.3	2.7	2.3	1.9	2.1	1.8	0.5	-0.6	-1.2	-1.1	-3.9	8.3	8.4	10.0
2010	Jan	-	-	-	1.6	1.2	-	-	-	-	0.6	-0.1	-	8.1	8.3	-
	Feb															
	Mar															
	Apr															
	May															
	Jun															
	Jul															
	Aug															
	Sep															
	Oct															
	Nov															
	Dec															

Monthly percent changes are calculated as month over same month previous year

## 2.1

## PROVINCIAL COMPARISON - AVERAGE WEEKLY WAGE RATE

	Canada		B.C.		Alberta		Sask.		Manitoba		Ontario		Quebec		N.B.		N.S.		P.E.I.		N.L.	
	\$	% Chg	\$	% Chg	\$	% Chg	\$	% Chg	\$	% Chg	\$	% Chg	\$	% Chg	\$	% Chg	\$	% Chg	\$	% Chg	\$	% Chg
2000	616.02		639.37		617.23		545.87		551.82		656.96		579.75		533.68		523.89		473.88		525.69	
2001	635.75	3.2	648.19	1.4	653.69	5.9	571.73	4.7	562.32	1.9	678.51	3.3	596.38	2.9	537.56	0.7	543.33	3.7	496.19	4.7	549.60	4.5
2002	649.94	2.2	668.04	3.1	684.20	4.7	585.61	2.4	574.53	2.2	689.97	1.7	606.22	1.6	546.18	1.6	558.11	2.7	508.69	2.5	567.69	3.3
2003	662.44	1.9	683.68	2.3	688.04	0.6	604.82	3.3	588.61	2.5	701.35	1.6	619.30	2.2	561.46	2.8	574.14	2.9	538.53	5.9	588.26	3.6
2004	679.83	2.6	686.74	0.4	703.63	2.3	627.34	3.7	612.04	4.0	721.00	2.8	641.46	3.6	574.18	2.3	588.07	2.4	562.57	4.5	587.82	-0.1
2005	703.35	3.5	704.49	2.6	757.32	7.6	643.13	2.5	625.21	2.2	744.94	3.3	656.66	2.4	591.28	3.0	607.46	3.3	560.82	-0.3	615.82	4.8
2006	727.78	3.5	726.02	3.1	814.24	7.5	676.82	5.2	641.38	2.6	767.14	3.0	672.03	2.3	610.85	3.3	618.60	1.8	580.76	3.6	642.91	4.4
2007	751.28	3.2	747.84	3.0	859.94	5.6	708.62	4.7	674.06	5.1	786.24	2.5	687.26	2.3	639.06	4.6	653.65	5.7	596.00	2.6	675.02	5.0
2008	783.09	4.2	780.85	4.4	904.54	5.2	762.72	7.6	704.41	4.5	816.41	3.8	711.06	3.5	672.28	5.2	674.58	3.2	631.70	6.0	734.98	8.9
2009	804.68	2.8	800.50	2.5	931.08	2.9	799.69	4.8	724.66	2.9	832.64	2.0	737.76	3.8	702.56	4.5	707.49	4.9	652.24	3.3	755.51	2.8
<b>2009</b> Jan	804.02	4.4	799.72	3.6	939.06	5.7	788.58	5.4	723.26	4.9	832.09	3.4	733.30	5.5	686.16	4.1	696.59	6.3	672.15	10.1	757.62	7.4
Feb	797.78	3.6	798.07	4.1	917.46	3.7	776.01	5.0	713.65	1.7	827.68	2.7	727.27	4.4	692.64	5.2	713.02	7.2	670.43	10.0	745.46	2.7
Mar	796.01	3.7	790.02	3.8	906.19	1.5	781.63	5.2	724.85	3.7	824.15	2.9	735.35	6.0	690.89	4.5	708.08	7.1	670.25	8.1	725.28	1.4
Apr	800.33	3.5	802.16	3.9	914.91	2.6	785.71	5.7	720.03	4.3	832.25	2.8	729.12	4.6	689.85	2.8	709.33	6.1	674.66	6.7	749.88	3.1
May	795.49	2.3	790.22	1.6	916.06	3.5	780.88	4.4	727.67	3.7	826.97	1.6	726.22	2.9	696.13	4.1	701.02	5.8	661.96	4.1	731.04	0.8
Jun	801.21	2.5	793.27	1.3	929.55	4.9	786.05	4.2	724.10	2.7	831.30	1.6	734.60	2.8	707.35	5.8	705.67	5.8	643.22	-0.1	743.76	1.7
Jul	801.51	2.6	789.41	0.2	926.41	3.5	797.82	3.9	718.60	1.5	830.52	2.2	740.44	3.5	707.60	5.7	709.61	6.9	637.48	0.0	728.22	0.6
Aug	808.08	2.4	806.56	3.7	947.44	4.2	805.41	4.0	720.64	0.3	828.22	0.8	749.27	3.7	710.09	5.9	712.29	4.7	633.74	0.3	755.32	1.6
Sep	813.44	2.1	810.38	2.5	948.00	2.6	814.94	3.6	726.06	2.0	840.66	1.0	744.61	3.3	720.53	5.3	702.72	1.5	643.48	2.9	780.37	2.2
Oct	815.58	2.7	808.81	1.7	949.97	2.5	827.30	6.3	738.34	3.8	841.09	2.0	749.81	4.3	707.62	4.5	705.42	3.3	641.76	0.8	791.28	4.9
Nov	811.48	1.7	802.41	1.6	945.06	0.9	827.48	5.1	728.90	2.8	837.27	1.1	744.85	2.8	712.83	3.5	709.01	2.0	632.38	-1.6	781.38	4.5
Dec	811.07	1.9	815.03	2.3	933.24	-0.1	825.09	5.8	729.71	3.4	839.46	2.0	737.74	1.7	706.35	2.5	716.94	2.5	654.50	0.5	776.76	3.1
<b>2010</b> Jan	814.06	1.2	812.32	1.6	944.18	0.5	831.51	5.4	726.61	0.5	843.35	1.4	737.18	0.5	713.86	4.0	724.46	4.0	657.18	-2.2	777.09	2.6
Feb																						
Mar																						
Apr																						
May																						
Jun																						
Jul																						
Aug																						
Sep																						
Oct																						
Nov																						
Dec																						
<b>Average:</b>																						
Jan-Jan09	804.02		799.72		939.06		788.58		723.26		832.09		733.30		686.16		696.59		672.15		757.62	
Jan-Jan10	814.06		812.32		944.18		831.51		726.61		843.35		737.18		713.86		724.46		657.18		777.09	
% Change	1.2		1.6		0.5		5.4		0.5		1.4		0.5		4.0		4.0		-2.2		2.6	

Monthly percent changes are calculated as month over same month previous year

Produced by: BC STATS

Source: Statistics Canada Labour Force Survey

## 2.2

## PROVINCIAL COMPARISON - AVERAGE HOURLY WAGE RATE

	Canada		B.C.		Alberta		Sask.		Manitoba		Ontario		Quebec		N.B.		N.S.		P.E.I.		N.L.	
	\$	% Chg	\$	% Chg	\$	% Chg	\$	% Chg	\$	% Chg	\$	% Chg	\$	% Chg	\$	% Chg	\$	% Chg	\$	% Chg	\$	% Chg
2000	16.66		17.64		16.29		14.73		14.98		17.59		16.07		14.01		14.01		12.63		13.74	
2001	17.22	3.4	17.98	1.9	17.13	5.2	15.35	4.2	15.34	2.4	18.17	3.3	16.63	3.5	14.20	1.4	14.53	3.7	13.22	4.7	14.32	4.2
2002	17.66	2.6	18.59	3.4	17.99	5.0	15.83	3.1	15.72	2.5	18.54	2.0	16.97	2.0	14.45	1.8	14.81	1.9	13.61	3.0	14.88	3.9
2003	18.04	2.2	19.02	2.3	18.13	0.8	16.42	3.7	16.06	2.2	18.88	1.8	17.42	2.7	14.80	2.4	15.42	4.1	14.52	6.7	15.46	3.9
2004	18.50	2.5	18.99	-0.2	18.54	2.3	16.94	3.2	16.74	4.2	19.43	2.9	17.99	3.3	15.21	2.8	15.79	2.4	15.09	3.9	15.44	-0.1
2005	19.09	3.2	19.36	1.9	19.76	6.6	17.28	2.0	17.17	2.6	20.06	3.2	18.43	2.4	15.63	2.8	16.24	2.8	15.15	0.4	16.09	4.2
2006	19.72	3.3	19.91	2.8	21.12	6.9	18.11	4.8	17.55	2.2	20.65	2.9	18.87	2.4	16.21	3.7	16.65	2.5	15.48	2.2	16.60	3.2
2007	20.41	3.5	20.49	2.9	22.40	6.1	19.00	4.9	18.42	5.0	21.27	3.0	19.35	2.5	16.93	4.4	17.53	5.3	15.97	3.2	17.46	5.2
2008	21.32	4.5	21.46	4.7	23.68	5.7	20.34	7.1	19.24	4.5	22.15	4.1	20.03	3.5	17.79	5.1	18.12	3.4	16.96	6.2	18.85	8.0
2009	22.05	3.4	22.21	3.5	24.70	4.3	21.54	5.9	19.88	3.3	22.75	2.7	20.80	3.8	18.67	4.9	19.00	4.9	17.70	4.4	19.57	3.8
<b>2009</b> Jan	22.11	4.8	22.23	4.3	24.87	6.2	21.35	6.9	19.89	5.3	22.78	3.6	20.83	5.9	18.54	5.4	18.86	5.4	18.37	9.9	19.98	6.4
Feb	21.97	3.9	22.30	4.8	24.36	4.5	21.10	6.1	19.58	1.4	22.70	3.1	20.65	4.5	18.60	5.4	19.24	5.8	18.35	9.9	19.72	3.4
Mar	21.98	4.3	22.09	4.4	24.30	3.6	21.22	6.2	19.92	3.7	22.66	3.6	20.89	5.5	18.56	4.4	19.09	6.1	18.35	7.3	19.36	3.7
Apr	22.04	4.3	22.31	4.6	24.40	4.3	21.32	6.7	19.85	3.7	22.83	3.6	20.72	5.2	18.65	3.3	19.08	5.9	18.49	7.8	19.38	2.8
May	21.87	3.4	22.10	3.2	24.40	5.0	21.15	5.7	19.90	4.2	22.63	2.5	20.56	3.7	18.52	4.6	18.77	5.9	17.53	3.3	19.04	3.0
Jun	21.89	3.5	21.97	2.7	24.70	6.1	21.19	6.0	19.70	2.5	22.71	2.9	20.51	3.3	18.55	6.1	18.87	6.9	17.21	3.2	19.08	4.1
Jul	21.71	3.4	21.81	2.6	24.31	4.6	21.21	5.7	19.38	1.8	22.49	3.0	20.47	3.2	18.51	5.9	18.83	7.4	16.95	2.5	18.68	3.4
Aug	21.83	3.3	21.96	4.2	24.90	5.9	21.30	5.1	19.60	1.9	22.39	1.8	20.73	4.0	18.49	6.4	18.77	4.9	16.90	2.5	18.94	3.1
Sep	22.21	2.5	22.37	3.3	25.07	3.7	21.95	5.9	20.00	2.4	22.87	1.5	20.94	2.8	18.96	6.0	18.95	2.5	17.42	3.9	19.78	2.5
Oct	22.35	3.3	22.46	2.9	25.16	3.9	22.20	6.3	20.25	4.2	23.01	2.7	21.13	3.7	18.68	4.5	19.02	3.0	17.50	1.7	20.35	5.3
Nov	22.32	2.3	22.34	2.1	25.08	2.5	22.34	5.9	20.18	3.9	22.94	1.5	21.13	2.9	18.97	3.8	19.23	2.5	17.51	0.2	20.41	4.9
Dec	22.35	2.4	22.63	2.7	24.82	1.3	22.23	5.5	20.30	4.6	23.03	2.6	21.04	1.8	19.01	3.2	19.33	2.7	18.18	1.2	20.39	3.8
<b>2010</b> Jan	22.51	1.8	22.63	1.8	25.15	1.1	22.37	4.8	20.33	2.2	23.24	2.0	21.06	1.1	19.21	3.6	19.82	5.1	18.59	1.2	20.45	2.4
Feb																						
Mar																						
Apr																						
May																						
Jun																						
Jul																						
Aug																						
Sep																						
Oct																						
Nov																						
Dec																						
<b>Average:</b>																						
Jan-Jan09	22.11		22.23		24.87		21.35		19.89		22.78		20.83		18.54		18.86		18.37		19.98	
Jan-Jan10	22.51		22.63		25.15		22.37		20.33		23.24		21.06		19.21		19.82		18.59		20.45	
% Change	1.8		1.8		1.1		4.8		2.2		2.0		1.1		3.6		5.1		1.2		2.4	

Monthly percent changes are calculated as month over same month previous year

## 2.3

## PROVINCIAL COMPARISON - EMPLOYMENT (Actual)

	Canada		B.C.		Alberta		Sask.		Manitoba		Ontario		Quebec		N.B.		N.S.		P.E.I.		N.L.	
	('000)	% Chg	('000)	% Chg	('000)	% Chg	('000)	% Chg	('000)	% Chg	('000)	% Chg	('000)	% Chg	('000)	% Chg	('000)	% Chg	('000)	% Chg	('000)	% Chg
2000	14,764.2		1,931.3		1,584.0		473.5		552.3		5,817.1		3,402.8		331.2		411.4		62.7		198.0	
2001	14,946.2	1.2	1,921.6	-0.5	1,630.9	3.0	460.3	-2.8	554.3	0.4	5,926.2	1.9	3,440.2	1.1	330.1	-0.3	415.2	0.9	63.6	1.4	203.8	2.9
2002	15,310.4	2.4	1,965.0	2.3	1,670.8	2.4	468.3	1.7	567.2	2.3	6,031.4	1.8	3,569.9	3.8	343.1	3.9	422.9	1.9	64.7	1.7	207.2	1.7
2003	15,672.3	2.4	2,014.7	2.5	1,716.7	2.7	476.1	1.7	570.3	0.5	6,213.2	3.0	3,628.8	1.6	343.1	0.0	431.2	2.0	66.1	2.2	212.3	2.5
2004	15,947.0	1.8	2,062.7	2.4	1,757.5	2.4	479.7	0.8	576.6	1.1	6,316.5	1.7	3,680.5	1.4	350.1	2.0	442.2	2.6	66.9	1.2	214.3	0.9
2005	16,169.7	1.4	2,130.5	3.3	1,784.4	1.5	483.5	0.8	580.3	0.6	6,397.7	1.3	3,717.3	1.0	350.5	0.1	443.1	0.2	68.2	1.9	214.1	-0.1
2006	16,484.3	1.9	2,195.5	3.1	1,870.7	4.8	491.6	1.7	587.0	1.2	6,492.7	1.5	3,765.4	1.3	355.4	1.4	441.8	-0.3	68.6	0.6	215.7	0.7
2007	16,866.4	2.3	2,266.3	3.2	1,959.4	4.7	501.8	2.1	596.5	1.6	6,593.8	1.6	3,851.7	2.3	362.8	2.1	447.6	1.3	69.3	1.0	217.1	0.6
2008	17,125.8	1.5	2,314.3	2.1	2,013.3	2.8	512.7	2.2	606.7	1.7	6,687.3	1.4	3,881.7	0.8	366.2	0.9	453.2	1.3	70.2	1.3	220.3	1.5
2009	16,848.9	-1.6	2,259.4	-2.4	1,988.1	-1.3	520.6	1.5	606.9	0.0	6,526.1	-2.4	3,844.2	-1.0	366.4	0.1	452.8	-0.1	69.5	-1.0	214.9	-2.5
<b>2009</b> Jan	16,600.9	-0.7	2,233.7	-1.8	1,994.1	1.2	512.6	3.3	595.2	0.6	6,463.6	-1.1	3,746.7	-1.0	353.3	0.9	439.4	0.6	63.3	-2.9	199.1	-3.6
Feb	16,578.2	-1.4	2,226.9	-2.1	1,978.0	0.2	514.3	2.9	599.0	1.0	6,452.3	-2.2	3,751.0	-1.6	351.4	-0.7	441.0	2.0	64.1	-2.3	200.2	-3.7
Mar	16,538.8	-1.8	2,221.9	-3.6	1,967.6	-1.0	511.0	2.2	592.8	-0.2	6,435.0	-2.3	3,753.3	-1.5	350.2	-0.5	438.7	0.6	64.4	-3.6	203.9	-1.6
Apr	16,645.1	-1.6	2,238.1	-2.9	1,966.9	-0.9	512.8	1.9	598.4	-1.4	6,468.3	-2.4	3,794.9	-0.3	353.2	-0.4	443.5	-0.8	64.7	-2.7	204.3	-4.1
May	16,952.3	-2.0	2,269.2	-2.6	2,000.7	-1.1	530.1	2.4	615.7	0.5	6,530.0	-3.6	3,888.3	-0.4	370.4	0.5	460.6	0.6	71.7	-3.1	215.7	-5.8
Jun	17,158.7	-1.9	2,286.5	-2.9	2,024.0	-1.6	535.6	2.8	618.8	-0.3	6,582.3	-3.2	3,954.4	-0.8	384.3	0.8	465.6	-0.8	75.6	-2.1	231.6	-2.3
Jul	17,070.8	-2.0	2,272.1	-3.3	2,007.3	-1.6	526.3	2.2	616.1	-0.2	6,572.7	-2.7	3,924.2	-1.2	381.9	-0.1	464.2	-1.2	74.1	-0.5	231.9	-3.4
Aug	17,080.4	-1.8	2,282.9	-2.7	2,000.4	-1.6	521.4	0.3	618.8	1.1	6,605.6	-2.7	3,904.3	-0.9	380.3	-0.4	462.7	-0.1	74.6	-2.5	229.4	-1.7
Sep	16,901.3	-1.9	2,272.5	-1.9	1,981.1	-1.9	521.8	-0.1	609.0	0.3	6,534.5	-2.7	3,858.1	-1.5	374.2	0.4	453.6	-1.0	72.3	-1.0	224.3	0.1
Oct	16,909.4	-2.1	2,265.2	-2.1	1,966.6	-3.4	520.6	-0.2	607.9	-0.2	6,573.1	-2.7	3,858.1	-1.4	373.1	0.5	458.4	-0.8	71.6	2.0	214.8	-2.8
Nov	16,924.1	-1.1	2,277.7	-1.3	1,979.5	-2.3	521.6	0.2	609.9	0.1	6,567.6	-1.5	3,863.9	-0.6	367.0	0.5	454.2	0.4	69.2	2.8	213.5	-0.8
Dec	16,826.5	-1.1	2,265.8	-1.2	1,991.1	-1.0	518.6	0.5	601.6	-0.8	6,528.1	-1.8	3,833.1	-0.4	357.8	-0.7	451.6	-0.2	68.3	3.0	210.5	0.6
<b>2010</b> Jan	16,594.9	0.0	2,248.8	0.7	1,961.2	-1.6	511.0	-0.3	601.5	1.1	6,455.3	-0.1	3,765.5	0.5	349.0	-1.2	432.8	-1.5	66.7	5.4	203.0	2.0
Feb																						
Mar																						
Apr																						
May																						
Jun																						
Jul																						
Aug																						
Sep																						
Oct																						
Nov																						
Dec																						
<b>Average:</b>																						
Jan-Jan09	16,600.9		2,233.7		1,994.1		512.6		595.2		6,463.6		3,746.7		353.3		439.4		63.3		199.1	
Jan-Jan10	16,594.9		2,248.8		1,961.2		511.0		601.5		6,455.3		3,765.5		349.0		432.8		66.7		203.0	
% Change	0.0		0.7		-1.6		-0.3		1.1		-0.1		0.5		-1.2		-1.5		5.4		2.0	

Monthly percent changes are calculated as month over same month previous year

Produced by: BC STATS

Source: Statistics Canada Labour Force Survey

**2.4 PROVINCIAL COMPARISON - AVERAGE WEEKLY HOURS WORKED\***

	Canada		B.C.		Alberta		Sask.		Manitoba		Ontario		Quebec		N.B.		N.S.		P.E.I.		N.L.	
	Hrs	% Chg	Hrs	% Chg	Hrs	% Chg	Hrs	% Chg	Hrs	% Chg	Hrs	% Chg	Hrs	% Chg	Hrs	% Chg	Hrs	% Chg	Hrs	% Chg	Hrs	% Chg
2000	34.5		33.2		35.7		35.2		34.5		34.7		33.8		35.5		34.2		35.4		35.0	
2001	33.8	-2.0	32.2	-3.0	35.7	0.0	34.7	-1.4	34.0	-1.4	34.2	-1.4	32.7	-3.3	34.7	-2.3	33.8	-1.2	35.1	-0.8	34.5	-1.4
2002	33.5	-0.9	32.0	-0.6	34.9	-2.2	34.1	-1.7	33.3	-2.1	34.0	-0.6	32.6	-0.3	34.6	-0.3	33.4	-1.2	34.5	-1.7	34.2	-0.9
2003	32.9	-1.8	31.8	-0.6	34.7	-0.6	33.7	-1.2	33.3	0.0	33.2	-2.4	31.9	-2.1	34.1	-1.4	32.9	-1.5	33.9	-1.7	33.3	-2.6
2004	33.3	1.2	32.3	1.6	34.9	0.6	33.8	0.3	33.3	0.0	33.7	1.5	32.3	1.3	33.8	-0.9	32.1	-2.4	33.0	-2.7	33.4	0.3
2005	33.5	0.6	32.6	0.9	35.5	1.7	34.4	1.8	33.4	0.3	33.8	0.3	32.5	0.6	34.2	1.2	33.1	3.1	33.8	2.4	34.1	2.1
2006	33.3	-0.6	32.5	-0.3	35.4	-0.3	34.5	0.3	33.4	0.0	33.4	-1.2	32.0	-1.5	34.3	0.3	32.9	-0.6	34.4	1.8	34.5	1.2
2007	33.3	0.0	32.9	1.2	35.8	1.1	34.8	0.9	33.8	1.2	33.5	0.3	31.6	-1.3	34.2	-0.3	33.3	1.2	33.8	-1.7	34.7	0.6
2008	33.1	-0.6	32.4	-1.5	35.1	-2.0	34.5	-0.9	33.3	-1.5	33.1	-1.2	31.9	0.9	33.9	-0.9	32.9	-1.2	33.4	-1.2	34.4	-0.9
2009	32.2	-2.7	31.4	-3.1	33.6	-4.3	33.1	-4.1	32.7	-1.8	32.4	-2.1	31.2	-2.2	33.6	-0.9	32.6	-0.9	33.1	-0.9	33.5	-2.6
<b>2009</b> Jan	33.1	-2.1	32.3	-2.1	35.3	-1.1	33.8	-1.2	33.2	-2.9	33.1	-2.9	31.8	-2.5	34.4	0.0	33.5	-0.6	33.0	1.2	33.6	-2.0
Feb	31.9	-4.8	32.2	-2.1	33.3	-5.7	30.2	-9.9	31.7	-3.6	31.5	-6.0	31.8	-3.0	33.9	1.5	32.7	-1.8	32.9	2.5	32.5	-7.1
Mar	31.8	-2.2	30.2	-7.9	34.5	-5.5	33.9	-1.7	34.6	0.3	30.9	-0.6	31.9	-0.9	34.0	1.2	30.8	0.0	30.0	-5.1	33.2	-0.9
Apr	30.8	-9.9	30.5	-8.4	31.7	-11.5	30.7	-13.3	32.9	-4.1	31.7	-7.8	28.5	-13.9	31.9	-7.0	31.7	-7.3	30.8	-6.7	31.4	-11.8
May	33.6	-2.0	32.1	-3.3	34.6	-2.3	36.1	-3.2	35.0	0.9	33.9	-1.5	32.7	-2.1	34.9	-1.1	34.7	1.2	36.6	1.4	35.3	-3.8
Jun	33.9	-2.0	32.9	-2.7	35.0	-2.2	35.1	-3.6	35.1	1.4	34.0	-2.6	33.1	-0.3	35.6	-0.8	34.5	-1.4	36.5	-0.3	36.6	-0.5
Jul	31.4	-1.3	31.3	-1.6	32.7	-3.8	31.8	-4.2	31.3	-2.5	31.8	-0.6	29.7	0.0	32.7	-1.2	32.4	-0.3	33.1	-2.4	33.5	-1.8
Aug	30.5	-2.6	30.3	-3.8	31.7	-5.9	31.8	-5.9	30.5	-5.3	31.3	-0.6	28.1	-2.8	32.1	-1.5	31.8	1.3	32.5	0.6	32.1	0.9
Sep	34.2	-1.2	33.3	-0.3	35.8	-2.5	37.2	-2.4	34.7	-1.1	34.1	-1.7	33.2	0.0	35.6	-0.6	34.2	-0.9	34.7	-2.3	35.8	-0.8
Oct	29.9	-1.3	29.6	-1.7	31.6	-4.5	31.1	-2.5	30.5	-0.3	29.7	-0.7	29.0	0.0	31.4	-1.3	30.7	0.7	31.7	0.0	32.2	-1.2
Nov	31.7	-1.6	29.4	-1.0	31.6	-4.5	31.2	0.0	29.9	-1.6	32.9	-1.5	31.9	-0.6	31.4	-0.3	29.6	-2.6	30.3	-1.9	30.5	-3.2
Dec	33.8	0.3	32.8	-0.6	34.8	-2.5	34.6	0.9	33.5	-2.3	34.2	1.5	32.9	0.9	34.9	0.9	34.3	0.0	33.8	0.3	35.0	1.2
<b>2010</b> Jan	33.1	0.0	32.1	-0.6	34.5	-2.3	34.0	0.6	33.2	0.0	33.5	1.2	31.8	0.0	34.3	-0.3	34.0	1.5	32.6	-1.2	33.7	0.3
Feb																						
Mar																						
Apr																						
May																						
Jun																						
Jul																						
Aug																						
Sep																						
Oct																						
Nov																						
Dec																						
<b>Average:</b>																						
Jan-Jan09	33.1		32.3		35.3		33.8		33.2		33.1		31.8		34.4		33.5		33.0		33.6	
Jan-Jan10	33.1		32.1		34.5		34.0		33.2		33.5		31.8		34.3		34.0		32.6		33.7	
% Change	0.0		-0.6		-2.3		0.6		0.0		1.2		0.0		-0.3		1.5		-1.2		0.3	

\* Average Actual Hours, All Workers, Main Job / Monthly percent changes are calculated as month over same month previous year

### 3.1 B.C. SECTOR COMPARISON - EARNINGS AND EMPLOYMENT TRENDS

	Average Weekly Wage rate				Average Hourly Wage Rate				Employment (Actual)				Average Weekly Hours Worked*			
	Goods Industries		Service Industries		Goods Industries		Service Industries		Goods Industries		Service Industries		Goods Industries		Service Industries	
	\$	% Chg	\$	% Chg	\$	% Chg	\$	% Chg	('000)	% Chg	('000)	% Chg	Hrs	% Chg	Hrs	% Chg
2000	764.48		607.09		19.26		17.23		406.3		1,525.0		36.9		32.3	
2001	780.91	2.1	616.03	1.5	19.60	1.8	17.59	2.1	382.3	-5.9	1,539.3	0.9	36.3	-1.6	31.2	-3.4
2002	787.66	0.9	638.67	3.7	19.91	1.6	18.27	3.9	392.2	2.6	1,572.8	2.2	35.8	-1.4	31.0	-0.6
2003	809.71	2.8	651.68	2.0	20.47	2.8	18.66	2.1	416.4	6.2	1,598.3	1.6	35.6	-0.6	30.8	-0.6
2004	793.81	-2.0	658.93	1.1	19.94	-2.6	18.74	0.4	436.9	4.9	1,625.8	1.7	36.3	2.0	31.2	1.3
2005	807.50	1.7	678.52	3.0	20.20	1.3	19.15	2.2	452.7	3.6	1,677.8	3.2	36.7	1.1	31.5	1.0
2006	836.11	3.5	698.28	2.9	20.87	3.3	19.67	2.7	463.9	2.5	1,731.6	3.2	36.5	-0.5	31.5	0.0
2007	881.25	5.4	712.93	2.1	21.92	5.0	20.11	2.2	495.7	6.9	1,770.6	2.3	37.0	1.4	31.8	1.0
2008	914.52	3.8	746.25	4.7	22.92	4.6	21.09	4.9	501.5	1.2	1,812.8	2.4	36.2	-2.2	31.3	-1.6
2009	956.40	4.6	765.48	2.6	24.12	5.2	21.79	3.3	446.5	-11.0	1,812.9	0.0	35.3	-2.5	30.4	-2.9
<b>2009</b>																
Jan	989.24	9.2	757.94	2.9	24.87	8.4	21.65	3.7	441.7	-10.0	1,792.0	0.5	34.9	-3.6	31.7	-1.2
Feb	963.78	8.1	761.18	3.6	24.27	6.9	21.86	4.6	438.4	-8.9	1,788.5	-0.3	34.9	-2.0	31.5	-1.9
Mar	954.72	7.0	754.70	3.9	24.13	7.6	21.65	4.0	429.0	-15.0	1,792.9	-0.4	34.8	-4.9	29.0	-8.8
Apr	976.91	5.6	763.04	4.0	24.48	5.2	21.82	4.8	447.5	-8.0	1,790.7	-1.5	34.5	-6.5	29.5	-9.0
May	938.98	1.9	757.52	2.2	23.97	3.7	21.69	3.4	444.7	-10.5	1,824.4	-0.5	36.2	-2.4	31.1	-3.4
Jun	932.94	1.9	761.84	1.8	23.62	3.6	21.60	2.7	458.2	-9.7	1,828.2	-1.0	37.5	-1.8	31.8	-2.5
Jul	931.88	3.4	756.65	0.0	23.66	5.1	21.38	2.2	458.1	-13.7	1,813.9	-0.3	35.9	-2.2	30.2	-0.7
Aug	928.33	2.7	778.11	4.6	23.32	3.9	21.64	4.5	462.8	-12.4	1,820.1	0.1	35.2	-3.3	29.0	-3.3
Sep	941.18	4.5	778.99	2.3	23.55	4.2	22.09	3.1	464.0	-10.0	1,808.5	0.5	37.2	-0.8	32.3	0.0
Oct	958.69	3.2	773.88	1.6	24.03	4.7	22.09	2.6	452.1	-9.7	1,813.1	0.0	32.6	-2.7	28.8	-1.4
Nov	970.14	5.1	766.10	1.3	24.50	5.7	21.88	1.5	433.3	-11.9	1,844.4	1.5	33.0	-0.6	28.5	-1.0
Dec	995.74	2.8	775.98	2.8	25.15	3.9	22.08	2.6	428.0	-11.4	1,837.8	1.5	36.5	0.0	31.9	-0.6
<b>2010</b>																
Jan	982.99	-0.6	774.63	2.2	25.06	0.8	22.09	2.0	429.7	-2.7	1,819.1	1.5	35.6	2.0	31.3	-1.3
Feb																
Mar																
Apr																
May																
Jun																
Jul																
Aug																
Sep																
Oct																
Nov																
Dec																
<b>Average:</b>																
Jan-Jan09	989.24		757.94		24.87		21.65		441.7		1,792.0		34.9		31.7	
Jan-Jan10	982.99		774.63		25.06		22.09		429.7		1,819.1		35.6		31.3	
% Change	-0.6		2.2		0.8		2.0		-2.7		1.5		2.0		-1.3	

\* Average Actual Hours, All Workers, Main Job / Monthly percent changes are calculated as month over same month previous )

## 3.2A

## B.C. INDUSTRIAL COMPARISON - AVERAGE WEEKLY WAGE RATE

	All Goods Producing Industries		Agriculture		Forestry Fishing & Mining		Utilities		Manufacturing		Construction	
	\$	% Chg	\$	% Chg	\$	% Chg	\$	% Chg	\$	% Chg	\$	% Chg
2000	764.48		443.18		945.49		952.59		750.08		737.24	
2001	780.91	2.1	463.69	4.6	974.68	3.1	945.04	-0.8	762.88	1.7	786.23	6.6
2002	787.66	0.9	458.57	-1.1	953.33	-2.2	980.51	3.8	784.68	2.9	778.14	-1.0
2003	809.71	2.8	479.92	4.7	968.26	1.6	1079.10	10.1	807.45	2.9	779.83	0.2
2004	793.81	-2.0	494.54	3.0	1019.25	5.3	998.53	-7.5	791.22	-2.0	784.30	0.6
2005	807.50	1.7	506.64	2.4	1047.49	2.8	1056.01	5.8	803.36	1.5	778.92	-0.7
2006	836.11	3.5	488.52	-3.6	1089.11	4.0	1089.09	3.1	826.97	2.9	823.56	5.7
2007	881.25	5.4	564.12	15.5	1116.85	2.5	1115.35	2.4	857.46	3.7	872.28	5.9
2008	914.52	3.8	538.64	-4.5	1178.91	5.6	1163.90	4.4	881.56	2.8	908.30	4.1
2009	956.40	4.6	587.34	9.0	1253.95	6.4	1252.25	7.6	896.91	1.7	971.69	7.0
<b>2009</b> Jan	989.24	9.2	539.09	4.6	1216.08	8.3	1258.78	24.9	942.27	4.1	992.34	11.6
Feb	963.78	8.1	468.42	-25.5	1290.91	8.1	1241.99	17.2	908.39	5.9	964.75	11.4
Mar	954.72	7.0	539.38	-1.0	1184.41	-0.5	1215.26	7.8	892.74	5.4	1002.83	11.4
Apr	976.91	5.6	529.48	-7.9	1356.92	14.4	1240.39	15.4	893.04	-2.1	1032.80	14.6
May	938.98	1.9	536.69	4.4	1240.84	11.7	1270.79	-2.7	884.64	-1.0	958.48	4.1
Jun	932.94	1.9	466.01	-7.3	1247.93	9.2	1233.08	2.2	864.85	-3.2	970.26	5.9
Jul	931.88	3.4	583.85	12.9	1114.42	-7.2	1283.51	8.8	879.36	0.6	969.35	9.1
Aug	928.33	2.7	625.88	11.9	1261.71	6.9	1233.40	-2.2	835.74	-5.0	967.42	8.6
Sep	941.18	4.5	585.19	8.0	1328.91	10.6	1289.81	5.3	874.74	1.9	954.53	7.9
Oct	958.69	3.2	668.30	35.0	1340.41	9.5	1245.90	2.1	911.57	3.6	933.71	0.2
Nov	970.14	5.1	783.65	57.2	1241.34	4.7	1265.30	8.2	918.06	6.0	956.35	2.4
Dec	995.74	2.8	715.37	25.2	1251.97	3.8	1244.80	10.3	966.92	5.8	972.30	-0.7
<b>2010</b> Jan	982.99	-0.6	698.22	29.5	1208.11	-0.7	1262.84	0.3	974.30	3.4	938.22	-5.5
Feb												
Mar												
Apr												
May												
Jun												
Jul												
Aug												
Sep												
Oct												
Nov												
Dec												
<b>Average:</b>												
Jan-Jan09	989.24		539.09		1216.08		1258.78		942.27		992.34	
Jan-Jan10	982.99		698.22		1208.11		1262.84		974.30		938.22	
% Change	-0.6		29.5		-0.7		0.3		3.4		-5.5	

Monthly percent changes are calculated as month over same month previous year

## 3.2B

## B.C. INDUSTRIAL COMPARISON - AVERAGE WEEKLY WAGE RATE

	All Service Producing Industries		Transport and Warehousing		Retail and Wholesale Trade		Finance & Related		Selected Breakout of Community & Personal Service						Public Administration		Total All Industries				
									Profess., Scient. & Tech Services		Education		Health and Social Services						Accommod., Food & Bev.		
	\$	% Chg	\$	% Chg	\$	% Chg	\$	% Chg	\$	% Chg	\$	% Chg	\$	% Chg	\$	% Chg	\$	% Chg			
2000	607.09		730.56		489.95		677.15		778.28		766.76		635.84		338.07		813.88		639.37		
2001	616.03	1.5	770.96	5.5	488.29	-0.3	682.44	0.8	808.78	3.9	745.10	-2.8	660.53	3.9	344.40	1.9	825.90	1.5	648.19	1.4	
2002	638.67	3.7	801.51	4.0	502.66	2.9	732.43	7.3	850.34	5.1	776.52	4.2	688.72	4.3	334.46	-2.9	889.68	7.7	668.04	3.1	
2003	651.68	2.0	803.93	0.3	522.83	4.0	728.90	-0.5	859.44	1.1	791.53	1.9	707.75	2.8	350.03	4.7	906.69	1.9	683.68	2.3	
2004	658.93	1.1	788.53	-1.9	521.95	-0.2	721.30	-1.0	841.32	-2.1	825.68	4.3	732.99	3.6	362.56	3.6	911.87	0.6	686.74	0.4	
2005	678.52	3.0	838.68	6.4	522.12	0.0	732.85	1.6	930.40	10.6	852.02	3.2	727.40	-0.8	385.89	6.4	952.45	4.5	704.49	2.6	
2006	698.28	2.9	853.73	1.8	560.93	7.4	767.73	4.8	953.97	2.5	848.00	-0.5	749.46	3.0	375.41	-2.7	990.00	3.9	726.02	3.1	
2007	712.93	2.1	873.77	2.3	577.42	2.9	773.66	0.8	973.70	2.1	843.70	-0.5	741.20	-1.1	394.13	5.0	1013.49	2.4	747.84	3.0	
2008	746.25	4.7	920.34	5.3	598.55	3.7	832.20	7.6	990.64	1.7	896.47	6.3	782.85	5.6	398.17	1.0	1042.99	2.9	780.85	4.4	
2009	765.48	2.6	913.61	-0.7	612.98	2.4	880.17	5.8	1081.33	9.2	871.07	-2.8	803.66	2.7	393.31	-1.2	1125.77	7.9	800.50	2.5	
<b>2009</b>																					
Jan	757.94	2.9	957.27	3.7	611.99	9.8	896.53	7.8	1092.56	7.9	842.45	-3.3	766.64	-0.5	382.98	3.4	1120.55	10.0	799.72	3.6	
Feb	761.18	3.6	954.00	0.8	636.27	8.6	905.49	9.0	1022.65	6.2	815.90	-5.1	780.02	2.2	385.77	9.8	1134.01	11.0	798.07	4.1	
Mar	754.70	3.9	932.66	1.2	605.25	7.4	843.38	2.9	1096.97	14.9	814.53	-7.3	799.23	3.0	382.98	4.7	1120.61	7.7	790.02	3.8	
Apr	763.04	4.0	983.29	5.2	588.28	2.9	883.30	4.3	1089.08	11.3	819.47	-6.6	817.98	6.4	387.54	4.7	1141.90	11.7	802.16	3.9	
May	757.52	2.2	934.80	-2.0	605.33	1.9	876.37	6.3	1090.12	16.9	846.07	-7.3	830.03	5.6	391.21	1.0	1050.64	2.9	790.22	1.6	
Jun	761.84	1.8	897.74	4.1	604.35	1.1	864.17	7.1	1108.01	11.6	873.58	-5.4	816.00	2.9	404.64	2.2	1122.82	7.4	793.27	1.3	
Jul	756.65	0.0	913.47	0.5	607.08	-2.1	863.03	10.3	1067.97	11.7	909.64	-6.3	807.54	1.2	402.64	-9.0	1113.16	6.7	789.41	0.2	
Aug	778.11	4.6	877.10	-2.5	628.64	4.9	924.32	10.1	1111.40	15.1	942.86	1.5	817.41	2.7	415.67	-7.5	1120.59	9.8	806.56	3.7	
Sep	778.99	2.3	875.30	-4.5	613.59	-1.9	893.94	4.5	1113.79	10.6	903.01	-0.6	816.67	1.6	392.94	-7.3	1132.67	9.1	810.38	2.5	
Oct	773.88	1.6	865.95	-7.3	624.03	-0.8	897.04	6.2	1055.95	3.7	877.12	-4.3	796.76	0.9	397.92	-1.0	1148.93	11.3	808.81	1.7	
Nov	766.10	1.3	895.32	-2.8	622.31	-0.1	862.32	0.1	1026.09	-2.3	888.10	1.3	785.86	4.4	392.10	-5.4	1139.60	4.7	802.41	1.6	
Dec	775.98	2.8	857.90	-7.6	608.65	-1.8	851.77	1.2	1096.68	2.2	930.12	9.0	809.09	1.5	384.96	-4.2	1167.65	3.7	815.03	2.3	
<b>2010</b>																					
Jan	774.63	2.2	953.89	-0.4	609.32	-0.4	869.00	-3.1	1123.17	2.8	911.54	8.2	824.03	7.5	379.14	-1.0	1146.28	2.3	812.32	1.6	
Feb																					
Mar																					
Apr																					
May																					
Jun																					
Jul																					
Aug																					
Sep																					
Oct																					
Nov																					
Dec																					
<b>Average:</b>																					
Jan-Jan09	757.94		957.27		611.99		896.53		1092.56		842.45		766.64		382.98		1120.55		799.72		
Jan-Jan10	774.63		953.89		609.32		869.00		1123.17		911.54		824.03		379.14		1146.28		812.32		
% Change	2.2		-0.4		-0.4		-3.1		2.8		8.2		7.5		-1.0		2.3		1.6		

Monthly Percent Changes are calculated as month over same month previous year

Produced by: BC STATS

Source: Statistics Canada Labour Force Survey

## 3.3A

## B.C. INDUSTRIAL COMPARISON - AVERAGE HOURLY WAGE RATE

	All Goods Producing Industries		Agriculture		Forestry Fishing & Mining		Utilities		Manufacturing		Construction	
	\$	% Chg	\$	% Chg	\$	% Chg	\$	% Chg	\$	% Chg	\$	% Chg
2000	19.26		11.38		22.71		24.75		18.95		18.93	
2001	19.60	1.8	11.92	4.7	22.80	0.4	24.76	0.0	19.29	1.8	19.89	5.1
2002	19.91	1.6	11.83	-0.8	22.32	-2.1	25.92	4.7	19.88	3.1	20.02	0.7
2003	20.47	2.8	12.77	7.9	23.20	3.9	28.13	8.5	20.47	3.0	19.91	-0.5
2004	19.94	-2.6	12.61	-1.3	24.00	3.4	25.81	-8.2	20.01	-2.2	19.78	-0.7
2005	20.20	1.3	12.69	0.6	24.19	0.8	27.57	6.8	20.31	1.5	19.57	-1.1
2006	20.87	3.3	12.74	0.4	25.21	4.2	28.00	1.6	20.92	3.0	20.52	4.9
2007	21.92	5.0	14.48	13.7	25.42	0.8	28.91	3.3	21.61	3.3	21.84	6.4
2008	22.92	4.6	14.05	-3.0	26.86	5.7	30.05	3.9	22.33	3.3	23.00	5.3
2009	24.12	5.2	15.22	8.3	28.66	6.7	32.49	8.1	23.04	3.2	24.62	7.0
<b>2009</b> Jan	24.87	8.4	15.80	9.5	28.62	7.4	33.10	23.3	23.89	3.8	24.95	10.5
Feb	24.27	6.9	14.42	-15.5	29.04	6.5	32.08	14.7	23.01	4.0	24.84	11.2
Mar	24.13	7.6	15.31	11.3	28.14	6.5	32.23	9.0	22.77	5.5	25.20	9.8
Apr	24.48	5.2	14.02	-1.1	30.04	13.7	32.44	12.9	23.17	0.3	25.52	9.9
May	23.97	3.7	13.45	-4.9	30.23	14.9	33.50	3.7	22.79	0.8	24.52	5.9
Jun	23.62	3.6	12.09	-6.6	28.57	11.2	32.46	5.3	22.39	-0.3	24.60	6.4
Jul	23.66	5.1	13.74	3.9	26.95	-1.1	32.62	10.5	22.99	4.4	24.38	7.9
Aug	23.32	3.9	15.88	20.9	27.91	2.2	32.45	1.9	21.99	0.0	24.01	6.9
Sep	23.55	4.2	14.71	6.2	29.06	6.8	32.16	4.6	22.53	3.3	24.04	6.4
Oct	24.03	4.7	16.71	23.2	29.04	5.9	31.49	0.6	23.27	5.5	24.03	3.9
Nov	24.50	5.7	19.24	38.4	28.02	4.0	32.74	4.9	23.43	6.4	24.60	4.6
Dec	25.15	3.9	18.76	16.0	28.54	4.2	32.69	9.7	24.45	5.0	25.04	2.3
<b>2010</b> Jan	25.06	0.8	19.09	20.8	28.32	-1.0	32.54	-1.7	24.67	3.3	24.55	-1.6
Feb												
Mar												
Apr												
May												
Jun												
Jul												
Aug												
Sep												
Oct												
Nov												
Dec												
<b>Average:</b>												
Jan-Jan09	24.87		15.80		28.62		33.10		23.89		24.95	
Jan-Jan10	25.06		19.09		28.32		32.54		24.67		24.55	
% Change	0.8		20.8		-1.0		-1.7		3.3		-1.6	

Monthly percent changes are calculated as month over same month previous year

## 3.3B

## B.C. INDUSTRIAL COMPARISON - AVERAGE HOURLY WAGE RATE

	All Service Producing Industries		Transport and Warehousing		Retail and Wholesale Trade		Finance & Related		Selected Breakout of Community & Personal Service						Public Administration		Total All Industries				
									Profess., Scient. & Tech Services		Education		Health and Social Services						Accommod., Food & Bev.		
	\$	% Chg	\$	% Chg	\$	% Chg	\$	% Chg	\$	% Chg	\$	% Chg	\$	% Chg	\$	% Chg	\$	% Chg			
2000	17.23		18.70		13.95		18.41		20.36		23.05		19.29		10.81		21.88		17.64		
2001	17.59	2.1	20.06	7.3	13.96	0.1	18.62	1.1	21.42	5.2	22.71	-1.5	20.17	4.6	10.95	1.3	22.56	3.1	17.98	1.9	
2002	18.27	3.9	20.38	1.6	14.45	3.5	19.92	7.0	22.52	5.1	23.66	4.2	21.03	4.3	11.09	1.3	23.93	6.1	18.59	3.4	
2003	18.66	2.1	20.43	0.2	14.93	3.3	19.78	-0.7	22.71	0.8	24.27	2.6	21.91	4.2	11.28	1.7	24.40	2.0	19.02	2.3	
2004	18.74	0.4	19.95	-2.3	14.94	0.1	19.80	0.1	22.11	-2.6	25.04	3.2	22.04	0.6	11.57	2.6	24.81	1.7	18.99	-0.2	
2005	19.15	2.2	21.16	6.1	14.97	0.2	19.89	0.5	24.30	9.9	25.21	0.7	21.87	-0.8	12.00	3.7	25.88	4.3	19.36	1.9	
2006	19.67	2.7	21.42	1.2	15.75	5.2	20.78	4.5	25.03	3.0	25.48	1.1	22.40	2.4	11.85	-1.3	26.54	2.6	19.91	2.8	
2007	20.11	2.2	21.93	2.4	16.16	2.6	21.01	1.1	25.26	0.9	25.87	1.5	22.50	0.4	12.40	4.6	27.21	2.5	20.49	2.9	
2008	21.09	4.9	23.52	7.3	16.76	3.7	22.76	8.3	25.96	2.8	26.90	4.0	23.55	4.7	13.00	4.8	28.16	3.5	21.46	4.7	
2009	21.79	3.3	23.40	-0.5	17.41	3.9	23.78	4.5	28.20	8.6	26.85	-0.2	24.29	3.1	13.03	0.2	29.93	6.3	22.21	3.5	
<b>2009</b>																					
Jan	21.65	3.7	24.03	3.3	17.35	9.3	24.28	7.1	28.04	8.5	26.82	-1.8	23.71	4.9	12.65	-1.6	30.23	9.3	22.23	4.3	
Feb	21.86	4.6	24.47	2.1	17.83	8.5	24.04	6.4	26.59	5.2	27.00	1.7	24.07	4.3	12.98	4.5	29.91	7.2	22.30	4.8	
Mar	21.65	4.0	23.89	2.7	17.32	7.0	22.97	0.1	28.43	13.4	26.00	-3.3	24.36	3.5	12.95	2.8	29.88	5.2	22.09	4.4	
Apr	21.82	4.8	24.62	5.7	16.94	3.8	23.92	4.7	28.85	13.0	26.14	-1.2	24.70	8.0	13.03	1.7	30.10	7.7	22.31	4.6	
May	21.69	3.4	23.96	-1.4	17.33	3.3	23.90	6.1	28.33	14.1	26.84	-1.8	24.74	7.3	13.04	2.3	28.34	3.7	22.10	3.2	
Jun	21.60	2.7	23.01	1.8	17.17	1.3	23.47	6.7	28.76	10.7	26.45	-1.8	24.39	2.9	13.35	3.6	29.44	4.7	21.97	2.7	
Jul	21.38	2.2	23.01	-0.1	17.21	1.5	23.23	6.8	28.49	12.2	26.51	-2.6	24.17	2.6	13.15	-3.4	29.27	5.6	21.81	2.6	
Aug	21.64	4.5	22.46	-1.0	17.48	5.9	24.32	4.4	28.95	12.3	27.13	2.5	23.97	-0.1	13.47	0.9	29.70	7.9	21.96	4.2	
Sep	22.09	3.1	22.44	-4.4	17.59	1.8	24.06	3.1	29.11	9.1	27.14	0.7	24.58	1.3	13.00	-2.0	30.13	7.5	22.37	3.3	
Oct	22.09	2.6	22.71	-7.2	17.86	2.6	24.23	4.8	27.54	4.1	27.31	0.5	24.21	1.0	13.02	-0.1	30.57	9.5	22.46	2.9	
Nov	21.88	1.5	23.13	-4.4	17.61	2.4	23.36	1.6	26.79	-2.0	26.96	-0.2	24.24	2.4	12.87	-3.2	30.52	4.2	22.34	2.1	
Dec	22.08	2.6	22.75	-5.1	17.19	-0.8	23.55	2.3	28.39	2.1	27.75	4.9	24.37	0.6	12.83	-2.1	31.07	2.8	22.63	2.7	
<b>2010</b>																					
Jan	22.09	2.0	24.02	0.0	17.33	-0.1	23.74	-2.2	28.95	3.2	28.23	5.3	24.62	3.8	12.78	1.0	30.69	1.5	22.63	1.8	
Feb																					
Mar																					
Apr																					
May																					
Jun																					
Jul																					
Aug																					
Sep																					
Oct																					
Nov																					
Dec																					
<b>Average:</b>																					
Jan-Jan09	21.65		24.03		17.35		24.28		28.04		26.82		23.71		12.65		30.23		22.23		
Jan-Jan10	22.09		24.02		17.33		23.74		28.95		28.23		24.62		12.78		30.69		22.63		
% Change	2.0		0.0		-0.1		-2.2		3.2		5.3		3.8		1.0		1.5		1.8		

Monthly Percent Changes are calculated as month over same month previous year

Produced by: BC STATS

Source: Statistics Canada Labour Force Survey

## 3.4A

## B.C. INDUSTRIAL COMPARISON - EMPLOYMENT (Actual)

	All Goods Prod. Industries (incl. Utilities)		Agriculture		Forestry		Fishing and Trapping		Mining		Total Manufacturing		Selected Breakout of Manufacturing							
													Food and Beverage		Wood		Paper and Allied		Construction	
	('000)	% Chg	('000)	% Chg	('000)	% Chg	('000)	% Chg	('000)	% Chg	('000)	% Chg	('000)	% Chg	('000)	% Chg	('000)	% Chg		
2000	406.3		29.7		35.5		4.3		12.8		202.5		23.4		45.7		17.8		111.1	
2001	382.3	-5.9	25.5	-14.1	24.7	-30.4	4.7	9.3	11.3	-11.7	194.9	-3.8	25.6	9.4	48.9	7.0	15.0	-15.7	110.7	-0.4
2002	392.2	2.6	29.0	13.7	25.3	2.4	3.1	-34.0	9.2	-18.6	196.6	0.9	27.0	5.5	43.8	-10.4	17.0	13.3	118.1	6.7
2003	416.4	6.2	32.9	13.4	27.7	9.5	4.6	48.4	13.3	44.6	206.8	5.2	31.7	17.4	49.0	11.9	14.4	-15.3	119.8	1.4
2004	436.9	4.9	36.9	12.2	21.5	-22.4	2.9	-37.0	11.1	-16.5	211.2	2.1	31.4	-0.9	46.9	-4.3	12.0	-16.7	144.0	20.2
2005	452.7	3.6	38.7	4.9	21.6	0.5	2.1	-27.6	13.8	24.3	198.2	-6.2	31.5	0.3	45.8	-2.3	12.3	2.5	168.0	16.7
2006	463.9	2.5	34.7	-10.3	21.7	0.5	2.7	28.6	19.4	40.6	197.5	-0.4	24.4	-22.5	44.8	-2.2	15.1	22.8	179.3	6.7
2007	495.7	6.9	36.2	4.3	24.3	12.0	2.9	7.4	20.0	3.1	205.1	3.8	28.3	16.0	44.7	-0.2	15.2	0.7	196.9	9.8
2008	501.5	1.2	33.7	-6.9	17.4	-28.4	2.2	-24.1	25.8	29.0	187.4	-8.6	30.7	8.5	34.3	-23.3	13.2	-13.2	220.8	12.1
2009	446.5	-11.0	34.3	1.8	13.9	-20.1	2.2	0.0	24.2	-6.2	163.8	-12.6	29.6	-3.6	27.2	-20.7	10.9	-17.4	195.3	-11.5
<b>2009</b> Jan	441.7	-10.0	23.7	-37.1	14.3	-36.7	3.1	-3.1	28.4	40.6	163.1	-12.9	30.0	-8.5	24.2	-17.4	11.7	-39.7	196.3	-4.5
Feb	438.4	-8.9	27.3	-19.5	15.4	-30.0	3.4	9.7	25.5	28.1	163.6	-9.9	34.3	8.5	24.6	-15.5	13.8	-11.0	192.7	-6.6
Mar	429.0	-15.0	29.2	-20.0	12.7	-43.3	2.3	-8.0	25.9	40.0	165.8	-15.0	35.4	2.9	22.6	-34.9	12.2	-26.1	180.2	-15.9
Apr	447.5	-8.0	33.6	-3.2	10.4	-39.2	2.7	50.0	23.3	-6.4	175.5	-2.6	32.7	44.7	28.2	-17.8	12.8	-9.2	188.6	-12.1
May	444.7	-10.5	35.9	17.7	10.4	-46.7	1.5	-16.7	25.3	5.4	165.1	-12.9	35.8	36.6	28.9	-28.5	9.3	-16.2	193.4	-11.6
Jun	458.2	-9.7	40.4	15.4	13.0	-33.7	1.9	18.8	23.5	-6.0	163.7	-14.4	33.6	21.3	27.1	-32.1	12.0	10.1	202.6	-8.6
Jul	458.1	-13.7	40.2	9.2	13.7	-23.9	2.1	n.a.	24.6	-10.5	164.3	-17.5	24.1	-29.7	27.3	-31.1	10.9	-3.5	201.8	-13.5
Aug	462.8	-12.4	39.5	-2.9	14.2	8.4	1.9	-24.0	26.2	-9.0	166.3	-11.5	27.7	-13.4	26.6	-29.3	8.6	-23.9	204.7	-14.8
Sep	464.0	-10.0	39.2	16.7	15.2	18.8	1.9	-9.5	21.8	-27.1	173.2	-6.6	30.7	3.4	31.4	-12.3	11.1	0.0	199.3	-15.9
Oct	452.1	-9.7	41.0	28.1	15.9	22.3	1.7	-29.2	23.8	-18.2	157.0	-13.6	24.0	-22.8	28.8	-7.7	9.6	-22.6	199.0	-12.5
Nov	433.3	-11.9	31.7	20.1	13.7	4.6	1.9	-5.0	23.5	-21.1	154.6	-17.1	27.5	-14.9	28.1	-16.4	9.4	-16.8	193.8	-11.9
Dec	428.0	-11.4	30.2	11.0	17.5	8.7	1.9	-5.0	18.6	-41.3	153.7	-15.9	19.9	-40.8	29.0	12.8	8.9	-34.6	191.6	-9.1
<b>2010</b> Jan	429.7	-2.7	29.6	24.9	15.8	10.5	1.6	-48.4	24.5	-13.7	151.3	-7.2	20.3	-32.3	28.5	17.8	8.5	-27.4	193.1	-1.6
Feb																				
Mar																				
Apr																				
May																				
Jun																				
Jul																				
Aug																				
Sep																				
Oct																				
Nov																				
Dec																				
<b>Average:</b>																				
Jan-Jan09	441.7		23.7		14.3		3.1		28.4		163.1		30.0		24.2		11.7		196.3	
Jan-Jan10	429.7		29.6		15.8		1.6		24.5		151.3		20.3		28.5		8.5		193.1	
% Change	-2.7		24.9		10.5		-48.4		-13.7		-7.2		-32.3		17.8		-27.4		-1.6	

Monthly percent changes are calculated as month over same month previous yr

Produced by: BC STATS

Source: Statistics Canada Labour Force Survey

## 3.4B

## B.C. INDUSTRIAL COMPARISON - EMPLOYMENT (Actual)

	All Service Producing Industries		Transport. and Warehousing		Retail and Wholesale Trade		Finance & Related		Total Comm., & Personal Service		Selected Breakout of Comm. & Pers. Service						Public Administration		Total All Industries	
	('000)	% Chg	('000)	% Chg	('000)	% Chg	('000)	% Chg	('000)	% Chg	Education		Health and Social Services		Accommod. Food & Bev.		('000)	% Chg	('000)	% Chg
											('000)	% Chg	('000)	% Chg	('000)	% Chg				
2000	1,525.0		116.9		300.8		118.3		896.5		136.6		201.2		154.5		92.4		1,931.3	
2001	1,539.3	0.9	112.4	-3.8	303.3	0.8	120.9	2.2	913.1	1.9	138.3	1.2	196.8	-2.2	163.7	6.0	89.5	-3.1	1,921.6	-0.5
2002	1,572.8	2.2	112.9	0.4	324.9	7.1	123.3	2.0	923.6	1.1	139.3	0.7	211.6	7.5	162.5	-0.7	88.1	-1.6	1,965.0	2.3
2003	1,598.3	1.6	119.6	5.9	327.8	0.9	124.5	1.0	933.3	1.1	140.1	0.6	213.3	0.8	159.4	-1.9	93.0	5.6	2,014.7	2.5
2004	1,625.8	1.7	116.5	-2.6	315.8	-3.7	129.2	3.8	967.1	3.6	135.9	-3.0	219.2	2.8	175.3	10.0	97.2	4.5	2,062.7	2.4
2005	1,677.8	3.2	118.7	1.9	334.6	6.0	132.9	2.9	996.5	3.0	146.1	7.5	217.4	-0.8	175.8	0.3	95.1	-2.2	2,130.5	3.3
2006	1,731.6	3.2	119.5	0.7	353.7	5.7	138.0	3.8	1,029.1	3.3	156.0	6.8	232.2	6.8	170.5	-3.0	91.3	-4.0	2,195.5	3.1
2007	1,770.6	2.3	125.6	5.1	365.0	3.2	145.0	5.1	1,039.1	1.0	156.1	0.1	239.7	3.2	172.7	1.3	95.9	5.0	2,266.3	3.2
2008	1,812.8	2.4	128.0	1.9	354.8	-2.8	147.2	1.5	1,079.8	3.9	161.6	3.5	245.6	2.5	178.1	3.1	102.9	7.3	2,314.3	2.1
2009	1,812.9	0.0	115.2	-10.0	369.1	4.0	143.1	-2.8	1,079.3	0.0	162.3	0.4	260.3	6.0	172.1	-3.4	106.3	3.3	2,259.4	-2.4
<b>2009</b> Jan	1,792.0	0.5	117.8	-6.9	346.1	-0.9	151.2	4.2	1,073.3	0.4	163.7	-6.6	255.3	3.7	175.0	6.4	103.6	10.2	2,233.7	-1.8
Feb	1,788.5	-0.3	116.8	-9.0	346.6	-2.6	148.2	0.2	1,079.4	1.6	170.1	2.5	259.4	7.7	171.7	-1.0	97.6	-1.6	2,226.9	-2.1
Mar	1,792.9	-0.4	121.8	-6.3	346.0	-4.6	139.7	4.2	1,085.1	1.4	163.6	1.3	259.8	8.0	180.4	2.6	100.3	-3.6	2,221.9	-3.6
Apr	1,790.7	-1.5	114.0	-12.6	358.6	0.2	132.0	-7.2	1,089.0	0.7	168.9	0.3	266.2	14.2	171.5	-6.5	97.1	-8.3	2,238.1	-2.9
May	1,824.4	-0.5	114.3	-10.6	373.9	6.8	131.3	-12.9	1,092.2	-0.3	166.0	-3.0	255.8	6.8	175.9	-5.1	112.6	3.3	2,269.2	-2.6
Jun	1,828.2	-1.0	113.4	-17.3	374.2	4.5	134.2	-7.4	1,101.3	0.1	165.6	-4.9	258.0	5.5	177.5	-2.7	105.1	-1.6	2,286.5	-2.9
Jul	1,813.9	-0.3	117.3	-10.9	378.8	8.8	144.7	-6.9	1,068.1	-0.9	132.2	-6.2	262.0	6.5	170.5	-6.9	105.1	-1.1	2,272.1	-3.3
Aug	1,820.1	0.1	119.4	-11.8	388.9	7.0	138.1	-2.7	1,060.1	-1.4	137.8	5.4	252.3	3.7	171.2	-8.3	113.8	11.1	2,282.9	-2.7
Sep	1,808.5	0.5	112.8	-12.7	377.2	9.9	148.1	-0.5	1,058.6	-2.0	162.7	4.7	263.3	4.1	164.6	-5.6	111.8	13.3	2,272.5	-1.9
Oct	1,813.1	0.0	113.0	-9.8	379.0	9.3	147.9	-2.2	1,061.9	-1.7	164.8	1.0	263.7	3.3	167.5	-2.4	111.2	2.9	2,265.2	-2.1
Nov	1,844.4	1.5	110.1	-2.0	378.8	5.7	152.3	-2.0	1,092.9	0.2	177.9	8.1	263.1	3.3	167.9	-3.9	110.4	9.9	2,277.7	-1.3
Dec	1,837.8	1.5	111.4	-8.8	380.7	4.8	148.9	-0.1	1,089.5	1.4	173.8	3.2	265.0	6.1	171.3	-5.4	107.3	6.9	2,265.8	-1.2
<b>2010</b> Jan	1,819.1	1.5	110.7	-6.0	383.4	10.8	153.9	1.8	1,064.4	-0.8	176.4	7.8	254.3	-0.4	172.0	-1.7	106.7	3.0	2,248.8	0.7
Feb																				
Mar																				
Apr																				
May																				
Jun																				
Jul																				
Aug																				
Sep																				
Oct																				
Nov																				
Dec																				
<b>Average:</b>																				
Jan-Jan09	1,792.0		117.8		346.1		151.2		1,073.3		163.7		255.3		175.0		103.6		2,233.7	
Jan-Jan10	1,819.1		110.7		383.4		153.9		1,064.4		176.4		254.3		172.0		106.7		2,248.8	
% Change	1.5		-6.0		10.8		1.8		-0.8		7.8		-0.4		-1.7		3.0		0.7	

Monthly percent changes are calculated as month over same month previous year

Produced by: BC STATS

Source: Statistics Canada Labour Force Survey

## 3.5A

**B.C. INDUSTRIAL COMPARISON - AVERAGE WEEKLY HOURS WORKED\***

	All Goods Producing Industries		Agriculture		Forestry, Fishing & Mining		Utilities		Manufacturing		Construction	
	Hrs	% Chg	Hrs	% Chg	Hrs	% Chg	Hrs	% Chg	Hrs	% Chg	Hrs	% Chg
2000	36.9		37.7		37.3		35.6		37.5		35.4	
2001	36.3	-1.6	38.6	2.4	37.6	0.8	34.4	-3.4	36.3	-3.2	35.3	-0.3
2002	35.8	-1.4	36.3	-6.0	37.8	0.5	33.4	-2.9	36.0	-0.8	35.0	-0.8
2003	35.6	-0.6	36.4	0.3	37.9	0.3	34.4	3.0	35.6	-1.1	34.6	-1.1
2004	36.3	2.0	36.9	1.4	39.3	3.7	31.8	-7.6	36.0	1.1	36.2	4.6
2005	36.7	1.1	37.1	0.5	40.6	3.3	35.8	12.6	36.5	1.4	36.2	0.0
2006	36.5	-0.5	35.5	-4.3	40.2	-1.0	36.7	2.5	36.3	-0.5	35.9	-0.8
2007	37.0	1.4	36.4	2.5	40.5	0.7	35.5	-3.3	36.6	0.8	36.8	2.5
2008	36.2	-2.2	37.4	2.7	40.1	-1.0	33.3	-6.2	35.9	-1.9	35.6	-3.3
2009	35.3	-2.5	38.0	1.6	39.7	-1.0	36.0	8.1	35.1	-2.2	34.0	-4.5
<b>2009</b> Jan	34.9	-3.6	28.2	-18.0	37.0	-2.6	32.8	-6.3	37.4	1.9	33.2	-7.3
Feb	34.9	-2.0	32.4	-10.0	41.6	-0.5	36.9	12.8	36.0	0.8	32.6	-5.2
Mar	34.8	-4.9	33.6	-13.6	39.5	-6.0	28.2	-0.4	35.3	-4.9	33.9	-3.7
Apr	34.5	-6.5	39.7	1.0	34.3	-11.1	33.8	-7.9	34.6	-7.0	33.7	-5.9
May	36.2	-2.4	41.9	2.2	38.4	-1.5	37.0	13.8	36.1	-0.6	34.7	-6.2
Jun	37.5	-1.8	44.6	17.7	41.0	-0.7	38.8	4.3	35.1	-6.6	37.2	-2.6
Jul	35.9	-2.2	44.9	18.2	38.6	-8.3	35.6	6.3	34.7	-1.4	34.5	-6.5
Aug	35.2	-3.3	42.2	-1.2	40.8	5.7	32.1	-3.3	32.5	-7.7	35.0	-3.3
Sep	37.2	-0.8	40.3	1.0	44.0	5.3	41.3	20.8	36.2	-3.2	35.7	-2.7
Oct	32.6	-2.7	32.5	-10.5	40.5	11.3	37.3	17.3	31.8	-5.1	31.4	-4.0
Nov	33.0	-0.6	32.2	13.0	38.4	-3.0	37.3	23.9	33.2	2.2	31.5	-5.1
Dec	36.5	0.0	35.2	10.7	42.2	0.7	39.6	7.6	37.6	2.2	34.4	-2.8
<b>2010</b> Jan	35.6	2.0	31.4	11.3	39.9	7.8	36.6	11.6	37.9	1.3	33.3	0.3
Feb												
Mar												
Apr												
May												
Jun												
Jul												
Aug												
Sep												
Oct												
Nov												
Dec												
<b>Average:</b>												
Jan-Jan09	34.9		28.2		37.0		32.8		37.4		33.2	
Jan-Jan10	35.6		31.4		39.9		36.6		37.9		33.3	
% Change	2.0		11.3		7.8		11.6		1.3		0.3	

\* Average Actual Hours, All Workers, Main Job / Monthly percent changes are calculated as month over same month previous year

**3.5B** **B.C. INDUSTRIAL COMPARISON - AVERAGE WEEKLY HOURS WORKED\***

	All Service Producing Industries		Transport. and Warehousing		Trade		Finance & Related		Selected Breakout of Community & Personal Service						Public Administration		Total All Industries			
									Profess., Scient. & Tech Services		Education		Health and Social Services						Accommod., Food & Bev.	
	Hrs	% Chg	Hrs	% Chg	Hrs	% Chg	Hrs	% Chg	Hrs	% Chg	Hrs	% Chg	Hrs	% Chg	Hrs	% Chg	Hrs	% Chg		
2000	32.3		36.9		32.0		33.9		35.5		29.7		30.6		29.6		34.2		33.2	
2001	31.2	-3.4	35.3	-4.3	31.2	-2.5	32.9	-2.9	33.8	-4.8	28.7	-3.4	28.9	-5.6	29.8	0.7	31.7	-7.3	32.2	-3.0
2002	31.0	-0.6	34.8	-1.4	31.1	-0.3	33.3	1.2	34.0	0.6	29.0	1.0	29.1	0.7	28.0	-6.0	33.3	5.0	32.0	-0.6
2003	30.8	-0.6	35.8	2.9	30.8	-1.0	32.2	-3.3	34.2	0.6	28.1	-3.1	28.0	-3.8	29.0	3.6	32.2	-3.3	31.8	-0.6
2004	31.2	1.3	36.5	2.0	31.1	1.0	32.2	0.0	35.3	3.2	26.8	-4.6	29.1	3.9	29.3	1.0	32.3	0.3	32.3	1.6
2005	31.5	1.0	36.5	0.0	31.1	0.0	32.9	2.2	35.1	-0.6	28.4	6.0	29.9	2.7	29.4	0.3	32.5	0.6	32.6	0.9
2006	31.5	0.0	37.0	1.4	31.4	1.0	32.1	-2.4	34.4	-2.0	28.0	-1.4	30.0	0.3	29.2	-0.7	32.8	0.9	32.5	-0.3
2007	31.8	1.0	37.2	0.5	32.1	2.2	32.7	1.9	34.9	1.5	28.5	1.8	29.1	-3.0	28.9	-1.0	32.8	0.0	32.9	1.2
2008	31.3	-1.6	35.9	-3.5	31.2	-2.8	32.2	-1.5	34.3	-1.7	29.4	3.2	29.3	0.7	28.2	-2.4	32.7	-0.3	32.4	-1.5
2009	30.4	-2.9	34.9	-2.8	30.5	-2.2	32.4	0.6	33.2	-3.2	26.2	-10.9	28.4	-3.1	27.6	-2.1	33.2	1.5	31.4	-3.1
<b>2009</b> Jan	31.7	-1.2	34.9	-5.2	31.9	2.2	33.1	-6.0	36.1	4.9	29.3	-5.2	30.6	-1.6	26.7	2.7	34.5	-1.4	32.3	-2.1
Feb	31.5	-1.9	35.2	-3.0	31.2	-2.2	34.5	2.4	36.2	3.7	28.7	-9.2	29.3	-2.0	26.9	1.1	35.3	3.8	32.2	-2.1
Mar	29.0	-8.8	34.6	-1.1	29.9	-6.3	30.3	-8.2	33.1	-6.8	16.6	-43.7	29.2	-4.6	26.4	-1.9	33.1	-3.2	30.2	-7.9
Apr	29.5	-9.0	34.4	-12.9	29.0	-5.5	31.0	-5.2	34.1	-7.6	24.8	-23.9	26.9	-8.5	27.1	-0.4	32.2	-5.6	30.5	-8.4
May	31.1	-3.4	37.0	2.5	30.9	-1.0	33.5	-1.8	33.7	-4.0	29.8	-7.5	28.5	-8.7	26.8	-7.3	33.6	-1.5	32.1	-3.3
Jun	31.8	-2.5	37.0	-0.5	31.2	1.6	34.7	4.2	33.3	-7.5	30.7	-5.8	29.7	-3.9	28.4	-1.0	36.1	3.4	32.9	-2.7
Jul	30.2	-0.7	36.9	4.8	30.8	-4.3	33.7	15.8	31.0	-8.3	17.1	-19.0	28.5	-1.0	28.7	-3.4	34.0	10.0	31.3	-1.6
Aug	29.0	-3.3	33.8	-9.6	30.6	-1.9	33.2	6.1	30.0	-8.5	14.0	-25.9	27.7	1.8	28.8	-3.0	30.9	3.7	30.3	-3.8
Sep	32.3	0.0	36.5	-0.8	31.2	-1.9	33.7	4.7	34.3	0.0	32.7	-1.2	29.9	2.7	28.5	-5.9	33.9	1.8	33.3	-0.3
Oct	28.8	-1.4	31.3	-3.1	28.9	-3.0	30.0	1.4	30.1	-4.1	27.4	-5.2	26.4	-2.6	27.6	-1.1	30.6	6.6	29.6	-1.7
Nov	28.5	-1.0	32.9	4.4	28.5	-4.0	28.9	-3.7	31.1	-0.3	27.5	3.0	25.0	-2.7	27.4	-2.5	29.6	3.1	29.4	-1.0
Dec	31.9	-0.6	34.9	-1.1	32.2	-0.3	32.4	-2.4	35.4	-1.1	31.9	4.6	29.4	-4.9	28.6	2.9	35.2	2.3	32.8	-0.6
<b>2010</b> Jan	31.3	-1.3	36.6	4.9	30.8	-3.4	31.3	-5.4	33.6	-6.9	31.9	8.9	30.0	-2.0	27.2	1.9	35.0	1.4	32.1	-0.6
Feb																				
Mar																				
Apr																				
May																				
Jun																				
Jul																				
Aug																				
Sep																				
Oct																				
Nov																				
Dec																				
<b>Average:</b>																				
Jan-Jan09	31.7		34.9		31.9		33.1		36.1		29.3		30.6		26.7		34.5		32.3	
Jan-Jan10	31.3		36.6		30.8		31.3		33.6		31.9		30.0		27.2		35.0		32.1	
% Change	-1.3		4.9		-3.4		-5.4		-6.9		8.9		-2.0		1.9		1.4		-0.6	

\* Average Actual Hours, All Workers, Main Job / Monthly percent changes are calculated as month over same month previous year

## **B.C. EARNINGS AND EMPLOYMENT TRENDS**

This is a monthly report designed to assist analysts monitoring changes in inter-provincial and inter-industrial earnings and employment levels. The report provides figures on persons employed and actual dollars earned. Primary emphasis, however, is placed on the 'percentage change' data to help highlight recent trends and/or structural shifts. Questions or comments should be directed to Ian Darling at (250) 387-0684 or [Ian.Darling@gov.bc.ca](mailto:Ian.Darling@gov.bc.ca).

### **Definitions and Explanatory Notes**

#### **Average Hourly Wage Rate & Average Weekly Wage Rate**

Beginning January 1997, information is collected on the usual wages or salary of employees at their main job. Respondents are asked to report their wage/salary before taxes and other deductions, and include tips, commissions and bonuses.

#### **Average Weekly Hours Worked**

Average actual number of hours worked per week, main job, is calculated by dividing total hours by the total number of employed persons. When a respondent holds more than one job or business, the job or business involving the greatest number of usual hours worked is considered to be the main job.

#### **Real (after inflation) Average Weekly Wage Rate**

Average weekly wage rates, as defined above, minus the rate of inflation as measured by the applicable Vancouver, Canada, or U.S. consumer price index.

#### **Employment (derived from Labour Force Survey, Cat No. 71-001) (Actual)**

All persons during the reference week who either a) did any work for pay or profit, or b) had a job but were absent because of illness, weather, vacation, labour disputes, or personal or family responsibility. United States trends are calculated from civilian employment seasonally adjusted data published by the U.S. Department of Commerce.

#### **Employment by Industry**

Employment by industry is based on the North American Industrial Classification System (NAICS).

**Articles published in previous editions can be found on our internet site at : [www.bcstats.gov.bc.ca](http://www.bcstats.gov.bc.ca)**