



Vancouver Island/Coast
Development Region

1	General Economy
<p>Regional Districts in Development Region: Capital, Cowichan Valley, Nanaimo, Alberni-Clayoquot, Comox-Strathcona, Powell River, Mount Waddington, Central Coast</p> <p>Within the Vancouver Island / Coast Development Region economic activity ranges from resource dependent to highly diversified. In the south, public administration, post-secondary activities, and tourism are important economic drivers. Other regions of the Island are highly dependent on resource activities. Logging and forest products manufacturing are important economic activities as well as commercial fishing. There are several mines in the Comox-Strathcona regional district. Higher commodity prices have led to some exploration in the area. The communities on the east coast of the Island have become popular destinations for retirees, resulting in increased construction and health services activity.</p>	

The notes above and later in this report on Demographics and Projections are the basis for BC Stats population projection P33 completed in the Summer of 2008. The projections are updated annually to reflect known demographic shifts and economic conditions. Full projections with "Components of Change", "Special Age Groups", "5 Year Age Cohorts by Sex", and accompanying notes are available for B.C., the 8 development regions, the 28 regional districts, the 79 local health areas (LHAs) and a number of "special areas" of local interest which are not part of a province-wide geocoding system. Individual areas, including age and sex detail, are modestly priced. Users requiring only total population projections are able to self serve for free from our population projection page: www.bcstats.gov.bc.ca/data/pop/pop/popproj.asp The full B.C. level projection is available free on the above page.

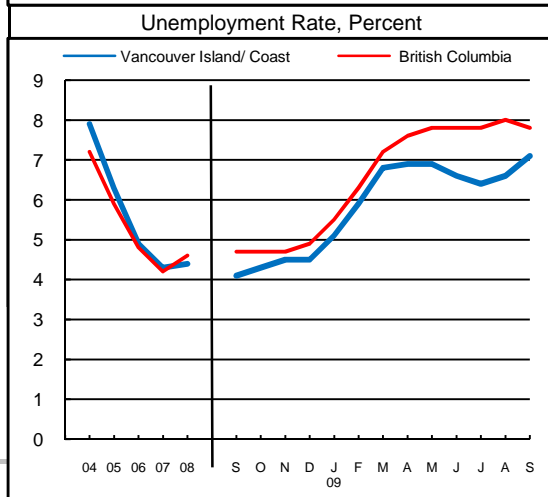
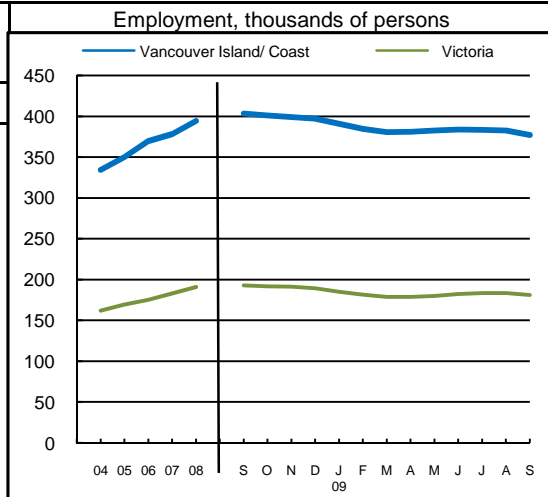
2	Economic Structure - Number of Business Locations, by Sector, by Employment Size, December 2008									
NAICS Code	Industry Sector based on NAICS Canada (North American Industrial Classification System)	Vancouver Island/Coast							British Columbia	
		Locations With No Employees	Firms with Employees						With Employees	
			Less Than 20	20 to 49	50 to 199	200 Plus	All Sizes with Emp.	Percent of Total	Percent of Total	All Sizes
11	Total, All Industries	30,144	25,532	2,118	806	196	28,652	100.0%	100.0%	175,003
	Agric., Forestry, Fishing & Hunt	1,855	1,039	69	32	9	1,149	4.0%	4.0%	7,009
21	Mining & Oil & Gas Extract.	73	45	2	1	1	49	0.2%	0.6%	1,071
22	Utilities	23	26	4	2	0	32	0.1%	0.1%	203
23	Construction	4,731	3,577	221	61	0	3,859	13.5%	12.1%	21,108
31	Manufacturing (31-33)	833	903	120	47	19	1,089	3.8%	4.5%	7,879
41	Wholesale Trade	901	975	86	25	1	1,087	3.8%	5.9%	10,359
44	Retail Trade (44-45)	1,673	3,477	291	155	24	3,947	13.8%	11.9%	20,742
48	Transp. & Warehousing (48-49)	1,206	928	78	28	7	1,041	3.6%	4.4%	7,734
51	Information & Cultural Indust.	363	217	44	11	3	275	1.0%	1.4%	2,412
52	Finance & Insurance	1,952	844	140	21	3	1,008	3.5%	3.8%	6,564
53	Real Estate & Rental & Leasing	4,580	1,163	48	20	0	1,231	4.3%	4.5%	7,835
54	Profes'nl, Scientif. & Tech. Srv	4,772	3,123	93	22	3	3,241	11.3%	11.0%	19,278
55	Mgmt. of Companies & Enter.	1,857	316	20	5	4	345	1.2%	1.6%	2,818
56	Admin. & Sup'rt, Waste Mgmt.	1,242	1,264	77	35	8	1,384	4.8%	4.9%	8,513
61	Educational Services	389	298	44	21	17	380	1.3%	1.4%	2,363
62	Health Care & Social Assistance	839	2,816	155	58	23	3,052	10.7%	8.4%	14,773
71	Arts, Entertainment & Recreation	507	442	45	18	3	508	1.8%	1.6%	2,873
72	Accom. & Food Services	664	1,422	448	158	11	2,039	7.1%	6.7%	11,639
81	Other Serv's (ex. Public Admin.)	1,675	2,556	74	22	3	2,655	9.3%	10.9%	19,095
91	Public Administration	9	101	59	64	57	281	1.0%	0.4%	735

Source: Statistics Canada, Business Register Division. Note: This table formerly identified **business establishments**.



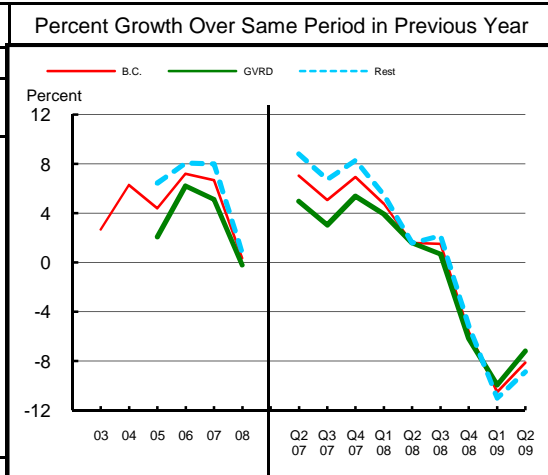
Vancouver Island/Coast
Development Region

3 Employment and Unemployment Rate, monthly data are 3-month moving average, actual, ending in stated month							
	Vancouver Island/Coast		Victoria		British Columbia		
	Emp. ('000)	Unemp. %	Emp. ('000)	Unemp. %	Emp. ('000)	Unemp. %	
1999	330.0	7.9	155.3	6.6	1,894.4	8.3	
2000	327.4	7.8	155.3	6.7	1,931.3	7.1	
2001	307.3	9.2	150.8	6.3	1,921.6	7.7	
2002	317.4	8.7	155.7	7.0	1,965.0	8.5	
2003	319.1	8.6	158.7	6.2	2,014.7	8.0	
2004	334.2	7.9	162.0	5.3	2,062.7	7.2	
2005	350.0	6.3	169.3	4.5	2,130.5	5.9	
2006	369.5	4.9	175.2	3.7	2,195.5	4.8	
2007	378.3	4.3	182.9	3.3	2,266.3	4.2	
2008	394.2	4.4	190.9	3.3	2,314.3	4.6	
2008 Jan	375.8	4.5	186.2	3.0	2,286.5	4.1	
2008 Feb	378.0	5.0	185.0	3.3	2,278.9	4.2	
2008 Mar	380.4	5.2	186.8	3.2	2,284.9	4.4	
2008 Apr	386.9	4.6	190.0	2.8	2,295.0	4.4	
2008 May	391.4	4.3	193.8	2.7	2,313.3	4.5	
2008 Jun	395.9	3.9	195.0	2.8	2,329.8	4.4	
2008 Jul	401.8	3.8	195.1	3.3	2,345.0	4.5	
2008 Aug	403.3	3.8	194.0	3.7	2,350.7	4.6	
2008 Sep	403.3	4.1	192.8	3.7	2,337.7	4.7	
2008 Oct	401.0	4.3	191.8	3.8	2,325.3	4.7	
2008 Nov	399.0	4.5	191.2	3.4	2,312.5	4.7	
2008 Dec	397.2	4.5	189.2	3.6	2,304.8	4.9	
2009 Jan	390.9	5.1	184.9	3.9	2,278.4	5.5	
2009 Feb	384.4	5.9	181.3	4.9	2,251.1	6.3	
2009 Mar	380.7	6.8	178.8	5.5	2,227.5	7.2	
2009 Apr	381.0	6.9	178.9	6.0	2,229.0	7.6	
2009 May	382.5	6.9	180.1	6.2	2,243.1	7.8	
2009 Jun	383.5	6.6	182.4	6.2	2,264.6	7.8	
2009 Jul	383.1	6.4	183.4	6.1	2,275.9	7.8	
2009 Aug	382.4	6.6	183.4	6.1	2,280.5	8.0	
2009 Sep	376.9	7.1	181.1	6.6	2,275.8	7.8	
2009 Oct							
2009 Nov							
2009 Dec							
Average:							
ytd average	Jan-Sep08	393.2	4.4	191.5	3.2	2,317.5	4.5
based on	Jan-Sep09	380.2	6.8	180.8	6.1	2,256.0	7.6
actual data	% Change	-3.3		-5.6		-2.7	



Source: Labour Force Survey, Statistics Canada. Sub-provincial regions are development regions or census metropolitan areas.

4 Retail Sales - based on Statistics Canada monthly survey							Percent Growth Over Same Period in Previous Year		
Year or Year/Quarter	\$ millions of retail sales			Percent change on year ago			B.C.	GVRD	Rest
	B.C.	Greater Vancouver	Rest of Province	B.C.	Greater Vancouver	Rest of Province			
2004	47,216.6	22,243.6	24,973.0	6.3	n/a	n/a			
2005	49,286.3	22,702.6	26,583.7	4.4	2.1	6.4			
Annual data 2006	52,837.1	24,110.2	28,726.9	7.2	6.2	8.1			
2007	56,365.4	25,342.8	31,022.6	6.7	5.1	8.0			
2008	56,562.4	25,290.5	31,271.8	0.3	-0.2	0.8			
Quarterly data 08 2	14,749.1	6,626.3	8,122.8	1.6	1.6	1.6			
08 3	14,923.3	6,466.4	8,456.9	1.5	0.7	2.2			
08 4	14,053.2	6,340.4	7,712.7	-5.6	-6.2	-5.2			
09 1	11,485.1	5,274.5	6,210.5	-10.5	-10.0	-11.0			
09 2	13,550.1	6,150.0	7,400.1	-8.1	-7.2	-8.9			



Source: B.C. & GVRD data - Statistics Canada, monthly survey (CANSIM 080-0015).



Vancouver Island/Coast
Development Region

Was 5 **Manufacturing Principal Statistics - Search at www.made-in-bc.ca for local firms, products and more**

This table is discontinued. Sub-provincial manufacturing principal statistics are no longer being produced.

5		Tourism Room Revenue (\$ Thousands)						Tourism Room Revenue Index 2003=100		
	Year	Total/YTD	Q1	Q2	Q3	Q4	Index			
Vanc. Isl./Coast Dev. Region	2005	309,133.9	44,887.4	81,833.0	133,057.4	49,356.1				
	2006	323,895.0	46,878.6	85,781.5	137,775.3	53,459.6				
	2007	351,617.1	51,152.1	93,744.8	150,536.7	56,183.5				
	2008	340,332.2	51,794.2	92,320.0	142,270.9	53,947.1				
	2009	127,073.7	47,130.8	79,942.9						
British Columbia	2005	1,681,563.6	351,779.6	404,639.8	610,273.7	314,870.6				
	2006	1,807,608.7	366,165.1	450,747.7	652,476.4	338,219.5				
	2007	1,963,958.7	412,949.3	488,493.9	697,545.2	364,970.3				
	2008	1,977,424.9	435,223.9	503,276.7	687,708.3	351,215.9				
	2009	802,329.6	378,880.1	423,449.6						
2008 Room Revenue by Accommodation Type (\$Thousands %Share)										
TOTAL	340,332.0	100.0%								
Fishing lodges	14,178.0	4.2%								
Hotels	210,385.0	61.8%								
76+ Rooms	146,997.0	43.2%								
1-75 Rooms	63,388.0	18.6%								
Motels	39,665.0	11.7%								
Vacation Rentals	40,717.0	12.0%								
Miscellaneous	35,386.0	10.4%								

asterisk before location denotes sub-area detail

Source: Hotel tax database maintained by Consumer Taxation Branch, Ministry of Small Business and Revenue
Published in detail monthly by BC Stats.

All room revenue data has been revised. For an explanation, see our periodical called *Tourism Sector Monitor*, April and May issues of 2009.
Link to explanation of changes: http://www.bcstats.gov.bc.ca/pubs/pr_tour.asp

6		Building Permits						Total Permits Index 2003=100	
Year	Total Building Permits	Non Residential				Residential		Index	
		Total Non Res.	Industrial	Commercial	Institutional & Gov't				
<-- \$ Millions -->							Units		
2001	632.0	282.5	34.8	145.1	102.6	349.6	2,258		
2002	769.2	265.2	16.5	155.2	93.5	504.1	3,469		
2003	993.4	349.7	33.6	202.5	113.6	643.7	4,376		
2004	1,098.4	238.6	18.5	139.1	80.9	859.8	5,199		
2005	1,459.9	426.4	20.7	257.4	148.3	1,033.5	5,860		
2006	1,701.7	474.5	31.4	281.8	161.3	1,227.2	6,214		
2007	1,841.2	525.0	30.1	229.4	265.4	1,316.2	6,223		
2008	1,627.7	465.7	50.7	295.7	119.4	1,162.0	4,897		
Jan-Aug 08	1,223.7	300.2	39.1	165.8	95.3	923.5	4,049		
Jan-Aug 09	901.4	454.6	30.4	230.5	193.7	446.8	1,803		

Not all projects require a building permit, and not all municipalities & regions report. Latest month preliminary, previous month is revised.
Source: Statistics Canada (data collected from municipal and Regional District offices).

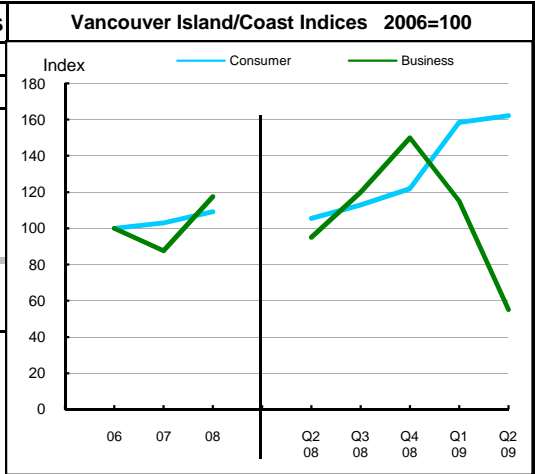


Vancouver Island/Coast
Development Region

7 Business and Consumer Bankruptcies, Quarterly - NEW series						
Year	Vancouver Island/Coast		Victoria		British Columbia	
	Consumer	Business	Consumer	Business	Consumer	Business
2006	1,368	80	611	30	7,020	585
2007	1,410	70	683	35	6,651	470
2008	1,495	94	705	43	7,293	454
2009						
2010						
YTD-08	692	40	325	14	3,335	202
YTD-09	1,097	34	478	20	5,400	232

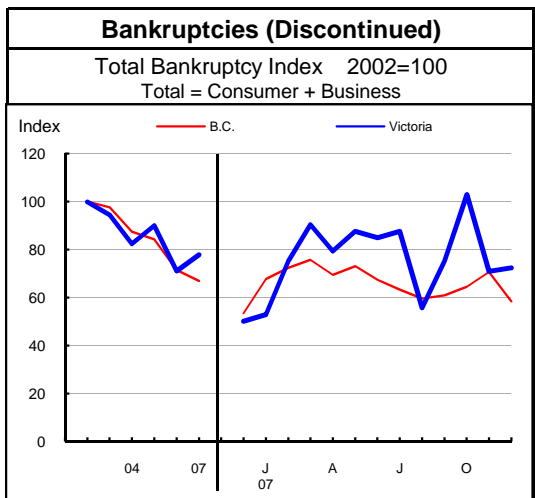
Source: Office of the Superintendent of Bankruptcy, Government of Canada
Total bankruptcy index includes business and consumer bankruptcies.

Note: Bankruptcy is not a good measure of business failure. Most firms that fail wind down operations and withdraw from business.



8 Incorporations			
Year	Incorporations	Incorporations Index 2003=100	
		B.C.	Region
2001	2,401		
2002	2,512		
2003	2,605		
2004	3,062		
2005	3,715		
2006	3,863		
2007	3,983		
2008	3,645		
Jan-Sep 08	2,832		
Jan-Sep 09	2,325		

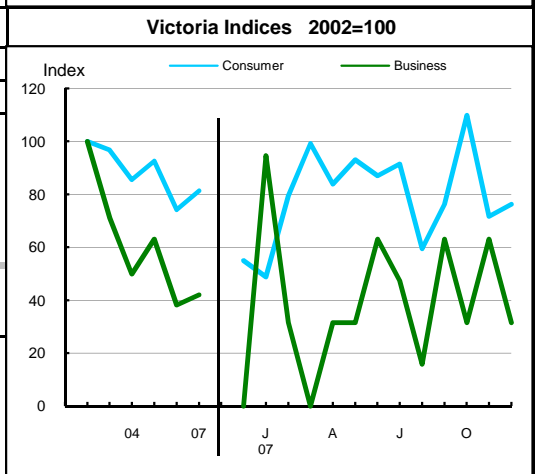
Source: Incorporations - (B.C.) Ministry of Finance



9 Business and Consumer Bankruptcies (Discontinued)						
Year	Victoria		Nanaimo		B.C.	
	Consumer	Business	Consumer	Business	Consumer	Business
2003	760	54	300	18	9,385	1,002
2004	673	38	227	19	8,378	922
2005	728	48	231	11	8,173	786
2006	584	29	204	8	7,021	587
2007	640	32	202	5	6,651	470
Jan-Dec 06	584	29	204	8	7,022	587
Jan-Dec 07	640	32	202	5	6,651	470

Source: Office of the Superintendent of Bankruptcy, Government of Canada
Total bankruptcy index includes business and consumer bankruptcies.

Note: Bankruptcy is not a good measure of business failure. Most firms that fail wind down operations and withdraw from business.





Vancouver Island/Coast
Development Region

Dependence on the Safety Net

10 Basic Income Assistance (Basic Income Assistance Recipients in Subject Group as a percent of Reference Group)							11 Employment Insurance (was UI) (EI beneficiaries as a percent of Reference Group)									
Subject Group (receiving benefits)		All (0-64)	Children <19 yrs in Families	Young Adults (19-24)	'Mid' Group (25-54)	Single Parent Women	Working Age (19-64)	Young Adults (19-24)	'Mid' Group (25-54)	'Older' Workers (55-64)	Note Older Data					
Reference Group		Total Pop. 0-64	Total Pop. <19	Total Pop. 19-24	Total Pop. 25-54	Tot. Female 19-64	Total Pop. 19-64	Total Pop. 19-24	Total Pop. 25-54	Total Pop. 55-64						
Vanc. Isl./Coast Dev. Region	Sep '07	1.5	2.5	1.6	1.4	0.7	1.8	1.8	2.0	1.2	Mar '07					
	Dec '07	1.6	2.5	1.6	1.5	0.7	1.1	1.1	1.3	0.7	Jun '07					
	Mar '08	1.6	2.5	1.6	1.6	0.7	1.2	1.0	1.4	0.8	Sep '07					
	Jun '08	1.6	2.6	1.7	1.6	0.7	1.8	1.7	2.0	1.2	Dec '07					
	Sep '08	1.6	2.6	1.6	1.6	0.7	1.8	1.7	1.9	1.2	Mar '08					
	Dec '08	1.8	2.8	1.9	1.8	0.7	2.5	2.2	2.9	1.9	Jun '08					
	Mar '09	2.1	3.1	2.3	2.2	0.8	1.3	1.2	1.5	0.9	Sep '08					
	Jun '09	2.2	3.2	2.5	2.3	0.8	2.4	2.6	2.7	1.7	Dec '08					
	Sep '09	2.2	3.3	2.5	2.3	0.9	3.9	4.2	4.3	2.6	Mar '09					
	Duration of Dependence on Income Assistance (As of September 2009)		All* Income Assistance Recipients as % of Total Pop 0-64: Region Compared to B.C.					EI Beneficiaries Aged 19-64 as % of Working Age Population								
Region		Percent					Percent									
B.C.		Region					B.C.					Region				
Total Number of Recipients	13,775	72,592														
Percent Distribution by Duration																
<1 Year	65.3	65.3														
1-2 Years	17.6	18.2														
>2 Years	17.2	16.4														
Source: Ministry of Children and Family Development administrative files and BC Stats population estimates. These figures include only a subset of those receiving income assistance. Excluded are those on Continuous Assistance (disabled or with persistent multiple barriers to employment, children in the home of a relative, and OAS/seniors. A recipient is defined as 'each person living in a family or living alone that is receiving basic income assistance'. Data does not include Aboriginal people living on Reserve. Note: '-' Data too small to release.							Source: Ministry of Housing and Social Development and BC Stats population estimates.									
12 Dependence on Basic Income Assistance and/or Employment Insurance (Basic Income Assistance Recipients + Employment Insurance Recipients in Subject Group as a percent of Reference Group)																
Subject Group (receiving assistance)		All (19-64)	Young Adults (19-24)	'Mid' Group (25-54)	'Older' Group (55-64)	All 'Safety Net' Recipients as % of Total Pop 19-64: Region Compared to B.C.										
Reference Group		Total Pop. 19-64	Total Pop. 19-24	Total Pop. 25-54	Total Pop. 55-64	Percent										
Vanc. Isl./Coast Dev. Region	Mar '07	3.0	3.5	3.5	1.6											
	Jun '07	2.4	2.7	2.7	1.1											
	Sep '07	2.4	2.5	2.8	1.2											
	Dec '07	3.0	3.3	3.5	1.6											
	Mar '08	3.0	3.3	3.5	1.6											
	Jun '08	3.8	3.8	4.4	2.3											
	Sep '08	2.6	2.7	3.1	1.3											
	Dec '08	3.8	4.4	4.4	2.1											
	Mar '09	5.6	6.4	6.4	3.2											

Note: The EI figures reported above no longer include persons claiming parental/adoption leave. Previous issues of this table did include them.



Vancouver Island/Coast
 Development Region

13 Demographics

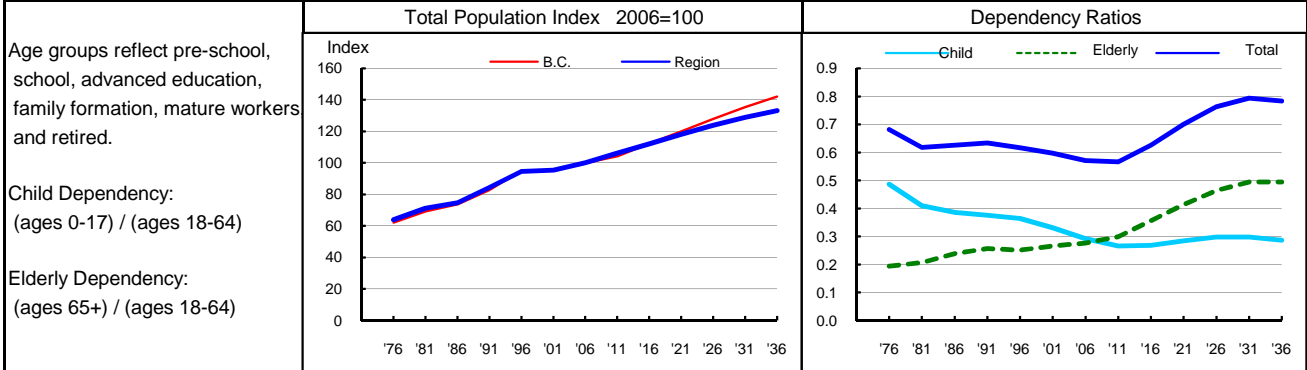
The population of Vancouver Island/Coast is over 3.5 years older than the provincial median. It has also aged at a faster rate than the provincial population, adding over nine years to its median age between 1986 and 2007, compared with a provincial gain of 7.2 years. Fertility rates have declined since the mid 1980s and have been consistently lower than provincial rates. Compared with the province as a whole, there are proportionately fewer children (aged 17 and younger) and more elderly (aged 65 and older) in this area. Consistent with the provincial pattern, there are more females than males. However, while the provincial ratio has about 98 males for every 100 females, there are only about 96 males for every 100 females in this region. Since the mid 1980's, the number of births has declined, while the number of deaths has climbed rapidly. Recently, deaths have exceeded births, resulting in negative natural increase since 2000-2001. Net migration has generally been positive, and was especially significant in the late 1980's to mid 1990's. Net migration is recovering from the lows of the late 1990s and net inflows in the last few years have been comparable to those seen in the early 1990s. However, declining natural increase has resulted in slower growth in the region compared with the earlier period.

14 Projection

Already negative, natural increase in this region is expected to continue to decline as deaths outnumber births by an increasing margin. However, net migration to the region is expected to tend to be highly positive over the duration of the projection period. This tendency will likely more than compensate for population losses due to the increasing number of deaths in the region. As a result, the population of the development region is expected to increase almost 25 percent by the year 2036. The population will continue to age and, by 2036, there will likely be almost 8 dependents for every 10 people of working age, with most of these dependents being seniors.

15 Selected Demographic Characteristics

Year	Population by age group, Thousands of persons							Households (,000)	Dependency Ratios			Year
	0-4	5-17	18-24	25-44	45-64	65+	All Ages		Child	Elderly	Total	
1976	31.7	106.2	62.1	121.8	99.3	55.1	476.2	165.1	0.487	0.194	0.681	1976
1981	34.9	99.7	68.2	153.5	106.6	68.1	531.0	200.0	0.410	0.208	0.618	1981
1986	36.8	95.6	58.7	172.3	111.5	81.7	556.6	224.6	0.387	0.238	0.625	1986
1991	39.7	105.0	56.2	201.2	127.6	99.1	628.7	250.4	0.376	0.257	0.633	1991
1996	40.4	118.5	59.9	217.6	158.6	109.9	705.0	288.3	0.364	0.252	0.617	1996
2001	33.0	114.3	61.1	195.4	188.4	118.6	710.7	299.7	0.331	0.267	0.598	2001
2006	31.7	107.4	65.2	182.1	226.9	131.4	744.7	317.9	0.293	0.277	0.570	2006
2011	34.8	99.7	72.1	185.8	246.8	151.3	790.5	344.4	0.267	0.300	0.566	2011
2016	38.0	100.2	65.4	202.2	245.5	182.9	834.2	371.9	0.269	0.356	0.626	2016
2021	40.2	107.5	61.0	216.1	240.5	214.4	879.7	393.9	0.285	0.414	0.700	2021
2026	40.3	116.1	62.2	223.5	237.7	242.9	922.7	414.0	0.299	0.464	0.763	2026
2031	39.1	120.6	67.9	224.1	243.5	264.9	960.2	433.3	0.298	0.495	0.793	2031
2036	39.1	120.9	73.3	220.4	262.7	275.4	991.8	452.0	0.288	0.495	0.783	2036



Source: Population data are Projection P-34, run in Summer 2009. Figures are adjusted for Census undercount and are for July 1st of stated year.
 Note: Demographics and Projection notes in Tables 13 and 14 are from Projection P-33, run the Summer 2008.