



**Thompson/Okanagan
Development Region**

1	General Economy
<p>Regional Districts in Development Region: Okanagan-Similkameen, Thompson-Nicola, Central Okanagan, North Okanagan, Columbia-Shuswap</p> <p>This region stretches from the Interior plateau (west of the Cascade Mountains), northward over the Kootenays, to the Rocky Mountains. It is made up of many different types of ecosystems from desert to mountain alpine. The main economic activities are agriculture, forestry, mining, manufacturing, and tourism. This region contains the most productive tree fruit and wine grape growing areas within the province. Warm weather and low precipitation have resulted in the pine forests being ravished both by a fungus carried by pine beetles, and by an increase in wild fires. The area has many wood processing facilities, some of which have announced closures or output reductions. Several major mines have closed in this region in the last few years due either to ore depletion or low metal prices. However, higher commodity prices have led to increased mining exploration and some mine openings. The climate, which is so conducive to agriculture, also attracts a large number of tourists and retirees to the region. New four season resorts continue to be built particularly in the eastern portion of the region.</p>	

The notes above and later in this report on Demographics and Projections are the basis for BC Stats population projection P33 completed in the Summer of 2008. The projections are updated annually to reflect known demographic shifts and economic conditions. Full projections with "Components of Change", "Special Age Groups", "5 Year Age Cohorts by Sex", and accompanying notes are available for B.C., the 8 development regions, the 28 regional districts, the 79 local health areas (LHAs) and a number of "special areas" of local interest which are not part of a province-wide geocoding system. Individual areas, including age and sex detail, are modestly priced. Users requiring only total population projections are able to self serve for free from our population projection page: www.bcstats.gov.bc.ca/data/pop/pop/popproj.asp The full B.C. level projection is available free on the above page.

2 Economic Structure - Number of Business Locations, by Sector, by Employment Size, December 2008

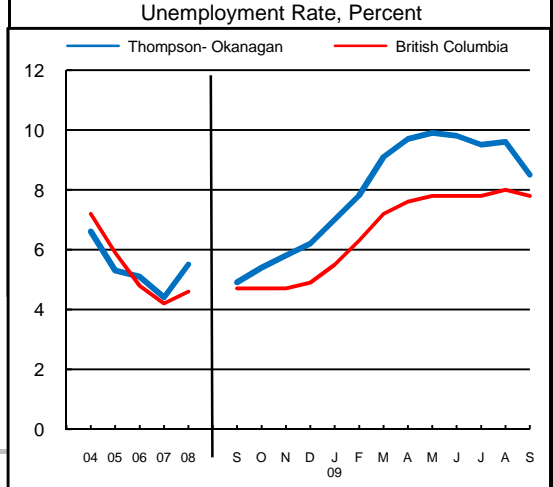
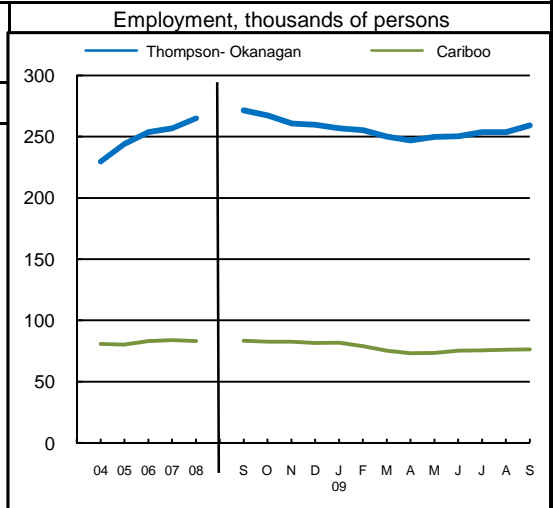
NAICS Code	Industry Sector based on NAICS Canada (North American Industrial Classification System)	Thompson/Okanagan							British Columbia	
		Locations With No Employees	Firms with Employees						With Employees	
			Less Than 20	20 to 49	50 to 99	200 Plus	All Sizes with Emp.	Percent of Total	Percent of Total	All Sizes
	Total, All Industries	21,581	19,602	1,732	685	84	22,103	100.0%	100.0%	175,003
11	Agric., Forestry, Fishing & Hunt	1,561	1,395	77	31	0	1,503	6.8%	4.0%	7,009
21	Mining & Oil & Gas Extract.	89	80	20	2	1	103	0.5%	0.6%	1,071
22	Utilities	32	33	5	3	0	41	0.2%	0.1%	203
23	Construction	4,061	3,268	192	64	2	3,526	16.0%	12.1%	21,108
31	Manufacturing (31-33)	531	795	128	70	16	1,009	4.6%	4.5%	7,879
41	Wholesale Trade	700	898	110	18	1	1,027	4.6%	5.9%	10,359
44	Retail Trade (44-45)	1,273	2,423	275	112	14	2,824	12.8%	11.9%	20,742
48	Transp. & Warehousing (48-49)	1,027	813	74	24	5	916	4.1%	4.4%	7,734
51	Information & Cultural Indust.	150	169	19	13	0	201	0.9%	1.4%	2,412
52	Finance & Insurance	1,501	690	88	20	0	798	3.6%	3.8%	6,564
53	Real Estate & Rental & Leasing	3,443	919	17	7	0	943	4.3%	4.5%	7,835
54	Profes'nl, Scientif. & Tech. Srv	2,341	1,716	66	12	0	1,794	8.1%	11.0%	19,278
55	Mgmt. of Companies & Enter.	1,430	277	15	10	4	306	1.4%	1.6%	2,818
56	Admin. & Sup'rt, Waste Mgmt.	810	950	57	27	1	1,035	4.7%	4.9%	8,513
61	Educational Services	178	176	16	13	13	218	1.0%	1.4%	2,363
62	Health Care & Social Assistance	430	1,700	122	59	8	1,889	8.5%	8.4%	14,773
71	Arts, Entertainment & Recreation	282	295	53	27	4	379	1.7%	1.6%	2,873
72	Accom. & Food Services	585	1,135	320	133	7	1,595	7.2%	6.7%	11,639
81	Other Serv's (ex. Public Admin.)	1,155	1,823	57	11	1	1,892	8.6%	10.9%	19,095
91	Public Administration	2	47	21	29	7	104	0.5%	0.4%	735

Source: Statistics Canada, Business Register Division. Note: This table formerly identified **business establishments**.



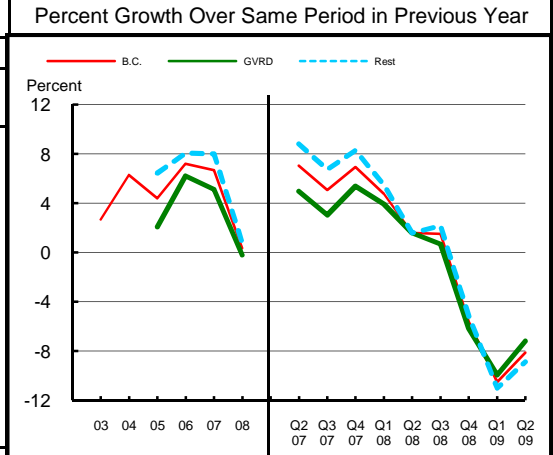
**Thompson/Okanagan
Development Region**

3 Employment and Unemployment Rate, monthly data are 3-month moving average, actual, ending in stated month							
	Thompson-Okanagan		Cariboo		British Columbia		
	Emp. ('000)	Unemp. %	Emp. ('000)	Unemp. %	Emp. ('000)	Unemp. %	
1999	206.1	9.6	81.4	11.6	1,894.4	8.3	
2000	210.3	9.3	79.1	9.9	1,931.3	7.1	
2001	210.2	9.3	79.4	9.7	1,921.6	7.7	
2002	208.1	9.4	78.0	12.7	1,965.0	8.5	
2003	218.8	8.8	78.2	11.1	2,014.7	8.0	
2004	229.7	6.6	80.7	9.1	2,062.7	7.2	
2005	244.0	5.3	80.1	7.4	2,130.5	5.9	
2006	253.7	5.1	82.9	6.1	2,195.5	4.8	
2007	256.7	4.4	83.8	5.1	2,266.3	4.2	
2008	265.0	5.5	83.1	6.5	2,314.3	4.6	
2008 Jan	253.9	4.8	88.0	5.2	2,286.5	4.1	
2008 Feb	253.6	5.3	86.5	5.8	2,278.9	4.2	
2008 Mar	257.6	5.9	84.0	6.8	2,284.9	4.4	
2008 Apr	260.7	5.6	82.9	7.7	2,295.0	4.4	
2008 May	265.6	5.6	82.7	7.9	2,313.3	4.5	
2008 Jun	271.5	5.1	83.5	7.0	2,329.8	4.4	
2008 Jul	274.8	5.2	83.4	6.9	2,345.0	4.5	
2008 Aug	275.2	4.9	83.2	7.2	2,350.7	4.6	
2008 Sep	271.4	4.9	83.3	6.8	2,337.7	4.7	
2008 Oct	267.3	5.4	82.5	6.4	2,325.3	4.7	
2008 Nov	260.7	5.8	82.4	5.5	2,312.5	4.7	
2008 Dec	259.7	6.2	81.4	5.6	2,304.8	4.9	
2009 Jan	256.9	7.0	81.7	6.1	2,278.4	5.5	
2009 Feb	255.3	7.8	78.8	7.8	2,251.1	6.3	
2009 Mar	249.9	9.1	75.3	10.0	2,227.5	7.2	
2009 Apr	246.8	9.7	73.2	12.0	2,229.0	7.6	
2009 May	249.8	9.9	73.4	12.9	2,243.1	7.8	
2009 Jun	250.2	9.8	75.2	13.5	2,264.6	7.8	
2009 Jul	253.6	9.5	75.6	14.2	2,275.9	7.8	
2009 Aug	253.7	9.6	76.1	13.3	2,280.5	8.0	
2009 Sep	259.2	8.5	76.2	12.4	2,275.8	7.8	
2009 Oct							
2009 Nov							
2009 Dec							
Average: ytd average based on actual data	Jan-Sep08	266.8	5.3	83.6	6.9	2,317.5	4.5
	Jan-Sep09	253.4	9.1	75.5	12.0	2,256.0	7.6
	% Change	-5.0		-9.7		-2.7	



Source: Labour Force Survey, Statistics Canada. Sub-provincial regions are development regions or census metropolitan areas.

4 Retail Sales - based on Statistics Canada monthly survey							Percent Growth Over Same Period in Previous Year						
Year or Year/Quarter	\$ millions of retail sales			Percent change on year ago			B.C.	Greater Vancouver	Rest of Province	B.C.	Greater Vancouver	Rest of Province	
	B.C.	Greater Vancouver	Rest of Province	B.C.	Greater Vancouver	Rest of Province							
2004	47,216.6	22,243.6	24,973.0	6.3	n/a	n/a							
2005	49,286.3	22,702.6	26,583.7	4.4	2.1	6.4							
Annual data 2006	52,837.1	24,110.2	28,726.9	7.2	6.2	8.1							
2007	56,365.4	25,342.8	31,022.6	6.7	5.1	8.0							
2008	56,562.4	25,290.5	31,271.8	0.3	-0.2	0.8							
Quarterly data 08 2	14,749.1	6,626.3	8,122.8	1.6	1.6	1.6							
08 3	14,923.3	6,466.4	8,456.9	1.5	0.7	2.2							
08 4	14,053.2	6,340.4	7,712.7	-5.6	-6.2	-5.2							
09 1	11,485.1	5,274.5	6,210.5	-10.5	-10.0	-11.0							
09 2	13,550.1	6,150.0	7,400.1	-8.1	-7.2	-8.9							



Source: B.C. & GVRD data - Statistics Canada, monthly survey (CANSIM 080-0015).



**Thompson/Okanagan
Development Region**

Was 5 **Manufacturing Principal Statistics - Search at www.made-in-bc.ca for local firms, products and more**

This table is discontinued. Sub-provincial manufacturing principal statistics are no longer being produced.

5		Tourism Room Revenue (\$ Thousands)						Tourism Room Revenue Index 2003=100	
	Year	Total/YTD	Q1	Q2	Q3	Q4	Index		
Thompson/Ok. Dev. Region	2005	236,478.8	41,155.5	55,397.2	103,200.5	36,725.6			
	2006	259,128.3	43,422.6	60,830.5	113,777.4	41,097.9			
	2007	293,096.9	51,580.0	70,211.3	126,659.4	44,646.3			
	2008	298,524.7	53,593.0	72,994.8	128,068.4	43,868.6			
	2009	111,294.2	48,242.6	63,051.5					
British Columbia	2005	1,681,563.6	351,779.6	404,639.8	610,273.7	314,870.6			
	2006	1,807,608.7	366,165.1	450,747.7	652,476.4	338,219.5			
	2007	1,963,958.7	412,949.3	488,493.9	697,545.2	364,970.3			
	2008	1,977,424.9	435,223.9	503,276.7	687,708.3	351,215.9			
	2009	802,329.6	378,880.1	423,449.6					
2008 Room Revenue by Accommodation Type (\$Thousands %Share)									
TOTAL	298,525.0	100.0%							
Fishing lodges	2,132.0	0.7%							
Hotels	150,678.0	50.5%							
76+ Rooms	121,999.0	40.9%							
1-75 Rooms	28,679.0	9.6%							
Motels	84,559.0	28.3%							
Vacation Rentals	27,468.0	9.2%							
Miscellaneous	33,688.0	11.3%							
asterisk before location denotes sub-area detail									

Source: Hotel tax database maintained by Consumer Taxation Branch, Ministry of Small Business and Revenue
Published in detail monthly by BC Stats.

All room revenue data has been revised. For an explanation, see our periodical called *Tourism Sector Monitor*, April and May issues of 2009.
Link to explanation of changes: http://www.bcstats.gov.bc.ca/pubs/pr_tour.asp

6		Building Permits						Total Permits Index 2003=100	
Year	Total Building Permits	Non Residential				Residential		Index	
		Total Non Res.	Industrial	Commercial	Institutional & Gov't				
<-- \$ Millions -->							Units		
2001	531.3	247.1	17.4	159.4	70.2	284.2	2,235		
2002	516.0	153.2	23.4	94.2	35.6	362.8	2,708		
2003	774.3	235.5	49.2	116.2	70.1	538.7	3,729		
2004	963.7	235.8	30.5	135.3	70.0	727.9	4,496		
2005	1,560.7	464.0	48.3	293.6	122.0	1,096.8	6,367		
2006	1,549.0	404.6	69.1	209.8	125.7	1,144.5	5,584		
2007	1,881.8	565.7	65.0	369.0	131.8	1,316.1	5,686		
2008	1,650.9	437.5	34.0	259.6	143.9	1,213.4	4,915		
Jan-Aug 08	1,263.1	279.8	27.9	186.7	65.2	983.3	4,104		
Jan-Aug 09	907.6	557.7	31.8	160.8	365.2	349.9	1,251		

Not all projects require a building permit, and not all municipalities & regions report. Latest month preliminary, previous month is revised.
Source: Statistics Canada (data collected from municipal and Regional District offices).



**Thompson/Okanagan
Development Region**

7 Business and Consumer Bankruptcies, Quarterly - NEW series							Thompson/Okanagan Indices 2006=100	
Year	Thompson/Okanagan		Kelowna		British Columbia		Index	
	Consumer	Business	Consumer	Business	Consumer	Business	Consumer	Business
2006	913	120	378	41	7,020	585	100	100
2007	874	97	378	32	6,651	470	100	80
2008	1,014	92	426	31	7,293	454	100	80
2009							100	80
2010							100	80
YTD-08	478	41	203	14	3,335	202	100	80
YTD-09	801	36	331	13	5,400	232	100	80

Source: Office of the Superintendent of Bankruptcy, Government of Canada
Total bankruptcy index includes business and consumer bankruptcies.

Note: Bankruptcy is not a good measure of business failure. Most firms that fail wind down operations and withdraw from business.

8 Incorporations			
Year	Incorporations	Incorporations Index 2003=100	
		B.C.	Region
2001	1,470	100	100
2002	1,644	140	140
2003	1,820	140	140
2004	2,039	140	140
2005	2,948	140	140
2006	3,196	140	140
2007	3,446	140	140
2008	3,124	140	140
Jan-Sep 08	2,489	140	140
Jan-Sep 09	1,734	140	140

Source: Incorporations - (B.C.) Ministry of Finance

Bankruptcies (Discontinued)		
Total Bankruptcy Index 2002=100 Total = Consumer + Business		
Year	Index	
		B.C.
2004	100	100
2007	100	100
2009	100	100

9 Business and Consumer Bankruptcies (Discontinued)						
Year	Kelowna		Kamloops		Penticton	
	Consumer	Business	Consumer	Business	Consumer	Business
2003	531	41	244	42	186	21
2004	422	42	219	35	124	13
2005	437	47	200	29	124	17
2006	350	42	170	18	100	13
2007	351	29	154	20	110	10
Jan-Dec 06	350	42	170	18	100	13
Jan-Dec 07	351	29	154	20	110	10

Source: Office of the Superintendent of Bankruptcy, Government of Canada
Total bankruptcy index includes business and consumer bankruptcies.

Note: Bankruptcy is not a good measure of business failure. Most firms that fail wind down operations and withdraw from business.

Kelowna Indices 2002=100		
Year	Index	
		Consumer
2004	100	100
2007	100	100
2009	100	100



**Thompson/Okanagan
Development Region**

Dependence on the Safety Net

10 Basic Income Assistance (Basic Income Assistance Recipients in Subject Group as a percent of Reference Group)							11 Employment Insurance (was UI) (EI beneficiaries as a percent of Reference Group)				
Subject Group (receiving benefits)		All (0-64)	Children <19 yrs in Families	Young Adults (19-24)	'Mid' Group (25-54)	Single Parent Women	Working Age (19-64)	Young Adults (19-24)	'Mid' Group (25-54)	'Older' Workers (55-64)	Note Older Data
Reference Group		Total Pop. 0-64	Total Pop. <19	Total Pop. 19-24	Total Pop. 25-54	Tot. Female 19-64	Total Pop. 19-64	Total Pop. 19-24	Total Pop. 25-54	Total Pop. 55-64	
Thompson/Ok. Dev. Region	Sep '07	1.4	2.2	1.5	1.3	0.7	2.5	2.5	2.8	1.8	Mar '07
	Dec '07	1.5	2.3	1.7	1.5	0.7	1.5	1.5	1.6	1.1	Jun '07
	Mar '08	1.6	2.4	1.8	1.6	0.8	1.3	1.1	1.5	0.8	Sep '07
	Jun '08	1.5	2.3	1.8	1.4	0.7	2.3	2.5	2.5	1.7	Dec '07
	Sep '08	1.6	2.4	1.9	1.5	0.8	2.6	2.9	2.9	1.8	Mar '08
	Dec '08	1.9	2.7	2.4	1.8	0.8	3.4	3.3	3.8	2.5	Jun '08
	Mar '09	2.3	3.2	3.1	2.4	0.9	1.6	1.6	1.8	1.1	Sep '08
	Jun '09	2.4	3.3	3.3	2.4	1.0	3.5	4.0	3.7	2.4	Dec '08
	Sep '09	2.6	3.7	3.4	2.5	1.1	5.9	7.6	6.3	3.8	Mar '09

Duration of Dependence on Income Assistance (As of September 2009)			All* Income Assistance Recipients as % of Total Pop 0-64: Region Compared to B.C.		EI Beneficiaries Aged 19-64 as % of Working Age Population	
Region		B.C.	Percent		Percent	
Total Number of Recipients	10,872	72,592				
Percent Distribution by Duration						
<1 Year	74.3	65.3				
1-2 Years	16.0	18.2				
>2 Years	9.7	16.4				

Source: Ministry of Children and Family Development administrative files and BC Stats population estimates. These figures include only a subset of those receiving income assistance. Excluded are those on Continuous Assistance (disabled or with persistent multiple barriers to employment, children in the home of a relative, and OAS/seniors. A recipient is defined as 'each person living in a family or living alone that is receiving basic income assistance'. Data does not include Aboriginal people living on Reserve. Note: '-' Data too small to release.

Source: Ministry of Housing and Social Development and BC Stats population estimates.

12 Dependence on Basic Income Assistance and/or Employment Insurance (Basic Income Assistance Recipients + Employment Insurance Recipients in Subject Group as a percent of Reference Group)							
Subject Group (receiving assistance)		All (19-64)	Young Adults (19-24)	'Mid' Group (25-54)	'Older' Group (55-64)	All 'Safety Net' Recipients as % of Total Pop 19-64: Region Compared to B.C.	
Reference Group		Total Pop. 19-64	Total Pop. 19-24	Total Pop. 25-54	Total Pop. 55-64	Percent	
Thompson/Ok. Dev. Region	Mar '07	3.7	4.2	4.1	2.2		
	Jun '07	2.6	3.1	2.9	1.5		
	Sep '07	2.3	2.6	2.7	1.2		
	Dec '07	3.5	4.1	3.9	2.1		
	Mar '08	3.9	4.6	4.3	2.2		
	Jun '08	4.6	5.0	5.2	2.9		
	Sep '08	2.8	3.4	3.2	1.4		
	Dec '08	4.9	6.2	5.4	2.9		
	Mar '09	7.8	10.5	8.5	4.4		

Note: The EI figures reported above no longer include persons claiming parental/adoption leave. Previous issues of this table did include them.



**Thompson/Okanagan
Development Region**

13 Demographics

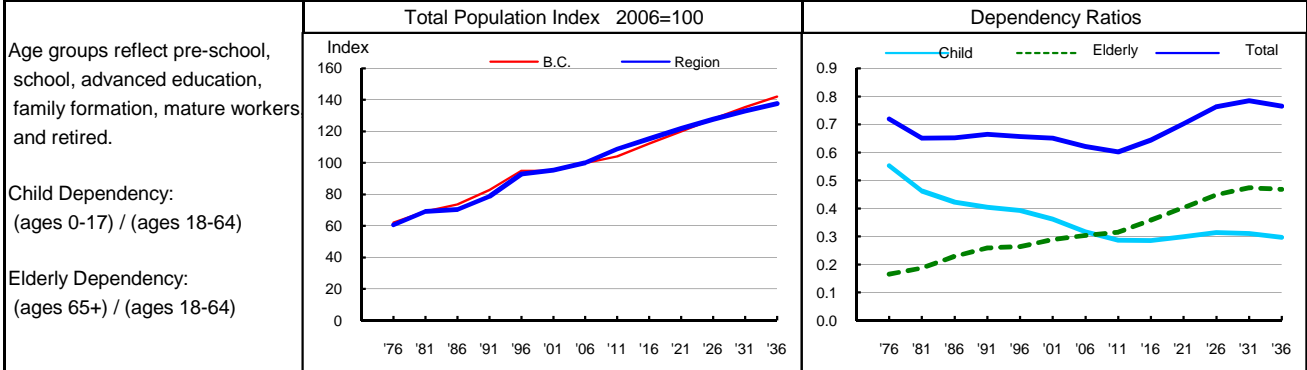
Thompson/Okanagan experienced strong net inflows of migrants during the early to mid 1990's. This highly positive net migration contributed to strong population growth for the region during this time. Levels tapered off after this period, but in 2006 and 2007 saw a return to relatively large net inflows. The population in this area was almost four years older than the provincial median in 2007, and has aged quickly, adding 9.5 years to its median population since the mid 1980s, compared to the provincial gain of 7.2 years. This may be due, in part, to the substantial number of retirees located in the region. The proportion of elderly (aged 65 and over) to working age population (aged 18 to 64) is also higher than the provincial ratio and has been since the mid 1980s. Fertility rates have declined over time, but they remain slightly above provincial levels. Along with fertility rates, the number of births has dropped, while the number of deaths almost doubled between 1986 and 2007. As a result, natural increase has been declining, becoming negative in 2002. Net migration has been positive and fairly strong in the last few years, and has been the sole contributor to recent growth in the region.

14 Projection

Natural increase is projected to become increasingly negative over the period as deaths outstrip births by a wider and wider margin. However, the strong inflows of migrants will likely more than compensate for the losses due to increased deaths. Despite a slowing of growth over the projection period due to natural increase, this region is expected to experience continued strong growth. By 2036, the population in this region is expected to be larger by about 145,000 people. The population will continue to age and, by 2036, this area will likely have about 7.5 dependents for every 10 people of working age. Most of these dependents will be seniors.

15 Selected Demographic Characteristics

Year	Population by age group, Thousands of persons							Households (,000)	Dependency Ratios			Year
	0-4	5-17	18-24	25-44	45-64	65+	All Ages		Child	Elderly	Total	
1976	22.0	76.1	37.8	79.7	60.0	29.5	305.1	98.8	0.553	0.166	0.719	1976
1981	24.3	73.2	43.1	98.6	69.0	39.6	347.8	123.3	0.463	0.188	0.651	1981
1986	23.8	66.7	36.1	103.9	74.4	49.2	354.0	135.9	0.422	0.229	0.652	1986
1991	25.1	71.1	33.6	118.7	85.8	61.9	396.2	152.3	0.404	0.260	0.664	1991
1996	27.3	83.4	39.2	136.5	106.6	74.5	467.6	184.2	0.392	0.264	0.656	1996
2001	22.8	82.2	39.2	126.7	125.0	84.1	480.1	196.2	0.361	0.289	0.650	2001
2006	21.8	76.4	43.2	117.9	149.2	94.5	503.0	205.8	0.316	0.304	0.621	2006
2011	25.3	72.4	48.5	127.3	166.0	107.9	547.3	230.5	0.286	0.316	0.601	2011
2016	28.0	72.5	44.5	141.7	166.6	126.5	579.9	251.6	0.285	0.358	0.643	2016
2021	29.2	78.3	40.9	154.1	164.8	145.0	612.2	267.0	0.299	0.403	0.702	2021
2026	29.1	85.1	41.0	159.9	163.7	163.7	642.3	280.6	0.313	0.449	0.762	2026
2031	28.5	87.6	45.8	159.1	170.1	177.9	669.0	293.9	0.310	0.474	0.784	2031
2036	28.7	87.5	49.5	156.9	185.7	183.7	692.1	306.9	0.296	0.468	0.765	2036



Source: Population data are Projection P-34, run in Summer 2009. Figures are adjusted for Census undercount and are for July 1st of stated year.
Note: Demographics and Projection notes in Tables 13 and 14 are from Projection P-33, run the Summer 2008.