



**Kootenay
Development Region**

1	General Economy
<p>Regional Districts in Development Region: East Kootenay, Central Kootenay, Kootenay-Boundary</p> <p>Located in the south east corner of the province, the area is made up of high mountain ranges and deep valleys which run roughly north and south. The rivers that traverse the elevation through the region provide abundant hydro electric power, and expansion projects are underway or planned. This area is home to the provinces largest coal fields. It has experienced mining exploration over the past few years and several coal mines are in the exploration and development phases in the region. This region is also home to the Trail Lead-Zinc Smelter and Refinery Operations of Teck Cominco. The area also has a large forestry industry. Silviculture activities continue to grow in this area. The out-door activities surrounding the growing tourism sector involve the local lakes and many provincial parks in the area. The area also has several all-season resort facilities, some of which are currently undergoing expansion phases. Livestock and cattle raising, along with haymaking and fruit tree farming, make up the agricultural activities in this area. The retirement community continues to grow, helping to expand the service sector.</p>	

The notes above and later in this report on Demographics and Projections are the basis for BC Stats population projection P33 completed in the Summer of 2008. The projections are updated annually to reflect known demographic shifts and economic conditions. Full projections with "Components of Change", "Special Age Groups", "5 Year Age Cohorts by Sex", and accompanying notes are available for B.C., the 8 development regions, the 28 regional districts, the 79 local health areas (LHAs) and a number of "special areas" of local interest which are not part of a province-wide geocoding system. Individual areas, including age and sex detail, are modestly priced. Users requiring only total population projections are able to self serve for free from our population projection page: www.bcstats.gov.bc.ca/data/pop/pop/popproj.asp The full B.C. level projection is available free on the above page.

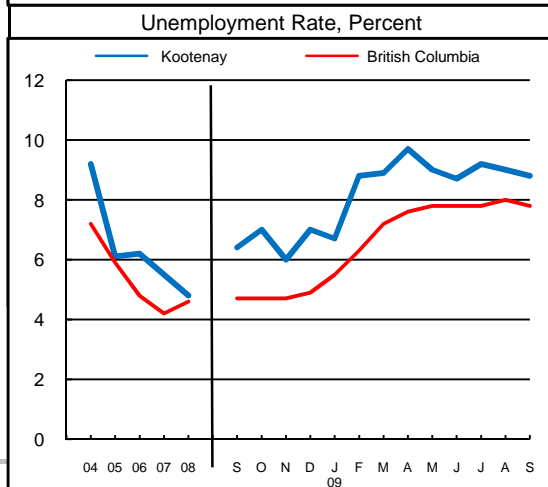
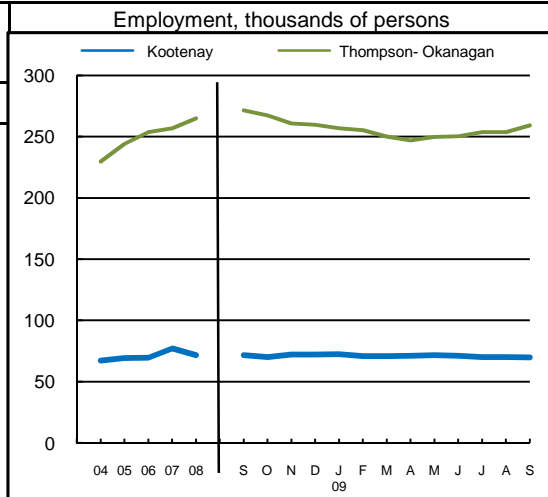
2		Economic Structure - Number of Business Locations, by Sector, by Employment Size, December 2008								
NAICS Code	Industry Sector based on NAICS Canada (North American Industrial Classification System)	Locations With No Employees	Kootenay						British Columbia	
			Firms with Employees						With Employees	
			Less Than 20	20 to 49	50 to 99	200 Plus	All Sizes with Emp.	Percent of Total	Percent of Total	All Sizes
	Total, All Industries	5,193	5,370	399	181	41	5,991	100.0%	100.0%	175,003
11	Agric., Forestry, Fishing & Hunt	419	360	18	8	0	386	6.4%	4.0%	7,009
21	Mining & Oil & Gas Extract.	38	46	3	2	4	55	0.9%	0.6%	1,071
22	Utilities	15	21	2	2	0	25	0.4%	0.1%	203
23	Construction	871	792	44	12	1	849	14.2%	12.1%	21,108
31	Manufacturing (31-33)	153	202	19	17	7	245	4.1%	4.5%	7,879
41	Wholesale Trade	129	199	20	2	0	221	3.7%	5.9%	10,359
44	Retail Trade (44-45)	381	755	63	30	6	854	14.3%	11.9%	20,742
48	Transp. & Warehousing (48-49)	252	286	15	3	1	305	5.1%	4.4%	7,734
51	Information & Cultural Indust.	40	68	7	2	0	77	1.3%	1.4%	2,412
52	Finance & Insurance	249	135	26	5	0	166	2.8%	3.8%	6,564
53	Real Estate & Rental & Leasing	841	231	5	4	0	240	4.0%	4.5%	7,835
54	Profes'nl, Scientif. & Tech. Srv	521	418	9	4	0	431	7.2%	11.0%	19,278
55	Mgmt. of Companies & Enter.	264	40	2	2	0	44	0.7%	1.6%	2,818
56	Admin. & Sup'rt, Waste Mgmt.	208	212	16	6	1	235	3.9%	4.9%	8,513
61	Educational Services	42	37	5	2	8	52	0.9%	1.4%	2,363
62	Health Care & Social Assistance	97	418	28	30	7	483	8.1%	8.4%	14,773
71	Arts, Entertainment & Recreation	85	162	14	17	1	194	3.2%	1.6%	2,873
72	Accom. & Food Services	270	436	85	18	3	542	9.0%	6.7%	11,639
81	Other Serv's (ex. Public Admin.)	314	518	14	4	0	536	8.9%	10.9%	19,095
91	Public Administration	4	34	4	11	2	51	0.9%	0.4%	735

Source: Statistics Canada, Business Register Division. Note: This table formerly identified **business establishments**.



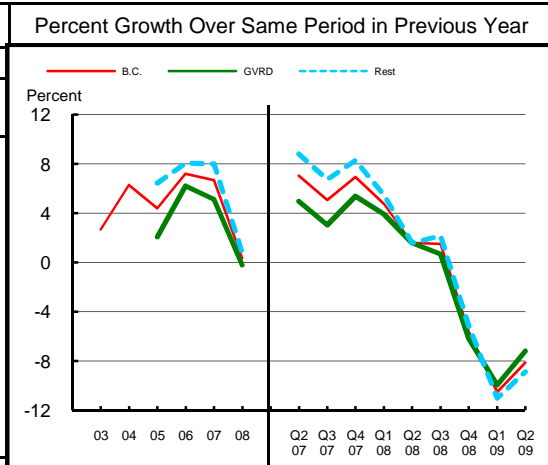
**Kootenay
Development Region**

3 Employment and Unemployment Rate, monthly data are 3-month moving average, actual, ending in stated month							
	Kootenay		Thompson-Okanagan		British Columbia		
	Emp. ('000)	Unemp. %	Emp. ('000)	Unemp. %	Emp. ('000)	Unemp. %	
1999	69.4	9.3	206.1	9.6	1,894.4	8.3	
2000	70.8	10.0	210.3	9.3	1,931.3	7.1	
2001	70.4	9.7	210.2	9.3	1,921.6	7.7	
2002	66.6	10.0	208.1	9.4	1,965.0	8.5	
2003	67.4	11.5	218.8	8.8	2,014.7	8.0	
2004	67.1	9.2	229.7	6.6	2,062.7	7.2	
2005	69.2	6.1	244.0	5.3	2,130.5	5.9	
2006	69.5	6.2	253.7	5.1	2,195.5	4.8	
2007	77.1	5.5	256.7	4.4	2,266.3	4.2	
2008	71.5	4.8	265.0	5.5	2,314.3	4.6	
2008 Jan	73.1	4.8	253.9	4.8	2,286.5	4.1	
2008 Feb	71.8	4.4	253.6	5.3	2,278.9	4.2	
2008 Mar	71.2	3.4	257.6	5.9	2,284.9	4.4	
2008 Apr	71.6	2.5	260.7	5.6	2,295.0	4.4	
2008 May	72.1	2.2	265.6	5.6	2,313.3	4.5	
2008 Jun	71.3	2.5	271.5	5.1	2,329.8	4.4	
2008 Jul	71.2	3.9	274.8	5.2	2,345.0	4.5	
2008 Aug	70.5	5.1	275.2	4.9	2,350.7	4.6	
2008 Sep	71.6	6.4	271.4	4.9	2,337.7	4.7	
2008 Oct	70.1	7.0	267.3	5.4	2,325.3	4.7	
2008 Nov	72.1	6.0	260.7	5.8	2,312.5	4.7	
2008 Dec	72.0	7.0	259.7	6.2	2,304.8	4.9	
2009 Jan	72.4	6.7	256.9	7.0	2,278.4	5.5	
2009 Feb	70.8	8.8	255.3	7.8	2,251.1	6.3	
2009 Mar	70.7	8.9	249.9	9.1	2,227.5	7.2	
2009 Apr	71.1	9.7	246.8	9.7	2,229.0	7.6	
2009 May	71.5	9.0	249.8	9.9	2,243.1	7.8	
2009 Jun	71.1	8.7	250.2	9.8	2,264.6	7.8	
2009 Jul	69.9	9.2	253.6	9.5	2,275.9	7.8	
2009 Aug	69.9	9.0	253.7	9.6	2,280.5	8.0	
2009 Sep	69.7	8.8	259.2	8.5	2,275.8	7.8	
2009 Oct							
2009 Nov							
2009 Dec							
Average:							
ytd average	Jan-Sep08	71.3	3.8	266.8	5.3	2,317.5	4.5
based on	Jan-Sep09	70.5	8.8	253.4	9.1	2,256.0	7.6
actual data	% Change	-1.2		-5.0		-2.7	



Source: Labour Force Survey, Statistics Canada. Sub-provincial regions are development regions or census metropolitan areas.

4 Retail Sales - based on Statistics Canada monthly survey							Percent Growth Over Same Period in Previous Year						
Year or Year/Quarter	\$ millions of retail sales			Percent change on year ago			B.C.	Greater Vancouver	Rest of Province	B.C.	Greater Vancouver	Rest of Province	
	B.C.	Greater Vancouver	Rest of Province	B.C.	Greater Vancouver	Rest of Province							
2004	47,216.6	22,243.6	24,973.0	6.3	n/a	n/a							
2005	49,286.3	22,702.6	26,583.7	4.4	2.1	6.4							
Annual data 2006	52,837.1	24,110.2	28,726.9	7.2	6.2	8.1							
2007	56,365.4	25,342.8	31,022.6	6.7	5.1	8.0							
2008	56,562.4	25,290.5	31,271.8	0.3	-0.2	0.8							
Quarterly data 08 2	14,749.1	6,626.3	8,122.8	1.6	1.6	1.6							
08 3	14,923.3	6,466.4	8,456.9	1.5	0.7	2.2							
08 4	14,053.2	6,340.4	7,712.7	-5.6	-6.2	-5.2							
09 1	11,485.1	5,274.5	6,210.5	-10.5	-10.0	-11.0							
09 2	13,550.1	6,150.0	7,400.1	-8.1	-7.2	-8.9							



Source: B.C. & GVRD data - Statistics Canada, monthly survey (CANSIM 080-0015).



**Kootenay
Development Region**

Was 5 **Manufacturing Principal Statistics - Search at www.made-in-bc.ca for local firms, products and more**

This table is discontinued. Sub-provincial manufacturing principal statistics are no longer being produced.

5		Tourism Room Revenue (\$ Thousands)					Tourism Room Revenue Index 2003=100			
	Year	Total/YTD	Q1	Q2	Q3	Q4	Index			
Kootenay Dev. Region	2005	81,466.7	26,297.2	14,712.7	26,877.1	13,579.7				
	2006	88,988.5	26,709.5	16,361.0	29,872.6	16,045.4				
	2007	105,026.5	31,667.0	19,694.8	34,803.1	18,861.6				
	2008	104,154.9	32,615.4	20,364.6	33,718.1	17,456.9				
	2009	45,175.1	27,410.4	17,764.7						
British Columbia	2005	1,681,563.6	351,779.6	404,639.8	610,273.7	314,870.6				
	2006	1,807,608.7	366,165.1	450,747.7	652,476.4	338,219.5				
	2007	1,963,958.7	412,949.3	488,493.9	697,545.2	364,970.3				
	2008	1,977,424.9	435,223.9	503,276.7	687,708.3	351,215.9				
	2009	802,329.6	378,880.1	423,449.6						
2008 Room Revenue by Accommodation Type (\$Thousands %Share)										
TOTAL	104,155.0	100.0%								
Hotels	36,440.0	35.0%								
1-75 Rooms	17,132.0	16.4%								
Motels	20,058.0	19.3%								
Vacation Rentals	27,537.0	26.4%								
asterisk before location denotes sub-area detail										

All room revenue data has been revised. For an explanation, see our periodical called *Tourism Sector Monitor*, April and May issues of 2009.
Link to explanation of changes: http://www.bcstats.gov.bc.ca/pubs/pr_tour.asp

6		Building Permits						Total Permits Index 2003=100	
Year	Total Building Permits	Non Residential				Residential		Index	
		Total Non Res.	Industrial	Commercial	Institutional & Gov't	Units	Units		
		<-- \$ Millions -->							
2001	174.3	61.9	8.8	18.3	34.7	112.4	803		
2002	164.2	35.1	6.5	23.5	5.0	129.1	789		
2003	239.4	58.8	6.7	28.6	23.5	180.7	1,057		
2004	244.7	71.1	13.9	33.4	23.8	173.6	892		
2005	369.7	70.4	8.9	22.9	38.6	299.3	1,432		
2006	404.0	102.2	13.7	32.9	55.6	301.8	1,442		
2007	493.3	116.7	14.2	47.1	55.5	376.6	1,467		
2008	445.5	48.7	8.2	34.0	6.5	396.8	1,706		
Jan-Aug 08	346.6	33.5	5.3	23.8	4.4	313.1	1,283		
Jan-Aug 09	170.3	37.0	6.0	20.6	10.3	133.3	498		

Not all projects require a building permit, and not all municipalities & regions report. Latest month preliminary, previous month is revised.
Source: Statistics Canada (data collected from municipal and Regional District offices).

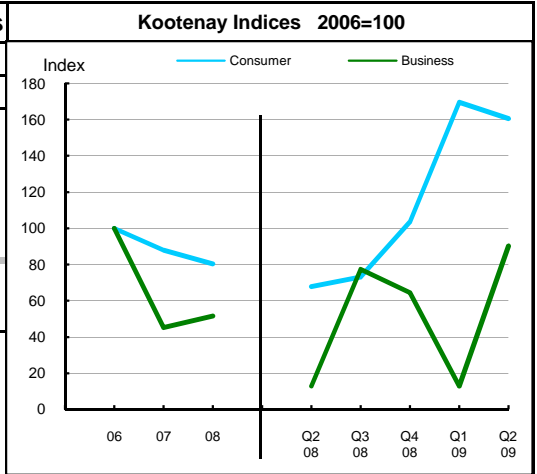


**Kootenay
Development Region**

7 Business and Consumer Bankruptcies, Quarterly - NEW series						
Year	Kootenay		British Columbia		Consumer	Business
	Consumer	Business	Consumer	Business		
2006	224	31	7,020	585		
2007	197	14	6,651	470		
2008	180	16	7,293	454		
2009						
2010						
YTD-08	81	5	3,335	202		
YTD-09	185	8	5,400	232		

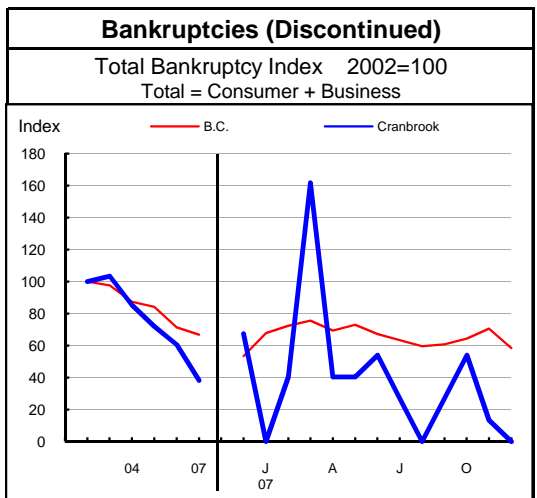
Source: Office of the Superintendent of Bankruptcy, Government of Canada
Total bankruptcy index includes business and consumer bankruptcies.

Note: Bankruptcy is not a good measure of business failure. Most firms that fail wind down operations and withdraw from business.



8 Incorporations			
Year	Incorporations	Incorporations Index 2003=100	
		B.C.	Region
2001	313		
2002	340		
2003	365		
2004	450		
2005	536		
2006	603		
2007	730		
2008	644		
Jan-Sep 08	523		
Jan-Sep 09	361		

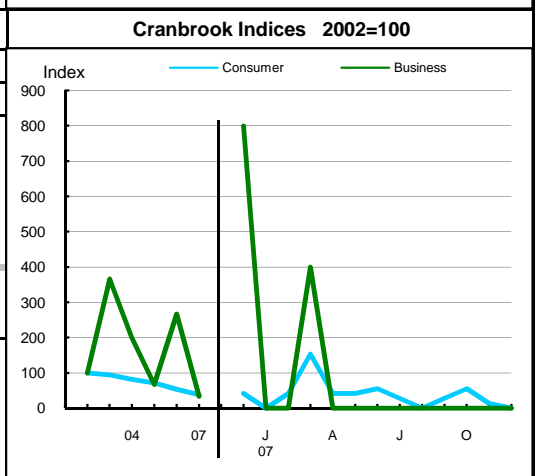
Source: Incorporations - (B.C.) Ministry of Finance



9 Business and Consumer Bankruptcies (Discontinued)						
Year	Cranbrook		Non-urban B.C.		B.C.	
	Consumer	Business	Consumer	Business	Consumer	Business
2003	81	11	1,186	173	9,385	1,002
2004	70	6	1,139	175	8,378	922
2005	62	2	1,097	155	8,173	786
2006	46	8	856	106	7,021	587
2007	33	1	827	75	6,651	470
Jan-Dec 06	46	8	856	106	7,022	587
Jan-Dec 07	33	1	827	75	6,651	470

Source: Office of the Superintendent of Bankruptcy, Government of Canada
Total bankruptcy index includes business and consumer bankruptcies.

Note: Bankruptcy is not a good measure of business failure. Most firms that fail wind down operations and withdraw from business.





**Kootenay
Development Region**

13

Demographics

Kootenay has experienced periods of slow population growth as well as net loss of population since the mid 1980s. It has also seen dramatic shifts in the character and structure of its population in the past 20 years. The median age has increased by over 11 years and, at 44.3 years, is now over four years older than the provincial figure. Cutbacks in the mining sector and the mobility of construction workers likely contributed to an age structure that is somewhat different than the provincial average. Those workers who move are more likely to be young and single, leaving behind more mature couples with families. Fertility has also decreased over the time period, but has generally remained above provincial levels. In the mid 1980s there were 6.6 dependents for every ten people aged 18 to 64 years, a figure higher than the corresponding provincial ratio. While the overall dependency ratio has declined in this region to 5.6 in 2007, it remains slightly higher than the provincial figure. The child dependency ratio has been declining over the last two decades, along with fertility, while the elderly dependency ratio has increased. The sex ratio in this area favours males, in contrast to the province as a whole, where there are more females than males. This is probably due to the abundance of male-dominated jobs in the resource sector in the region. Over the last two decades, births have decreased while the number of deaths is on the rise. As a result, natural increase has been contributing less and less to population growth, and has been negative for several of the last five years. Net migration has been predominantly negative since the late 1990s, but a substantial inflow of migrants in 2007 led to moderate growth in the last year..

14

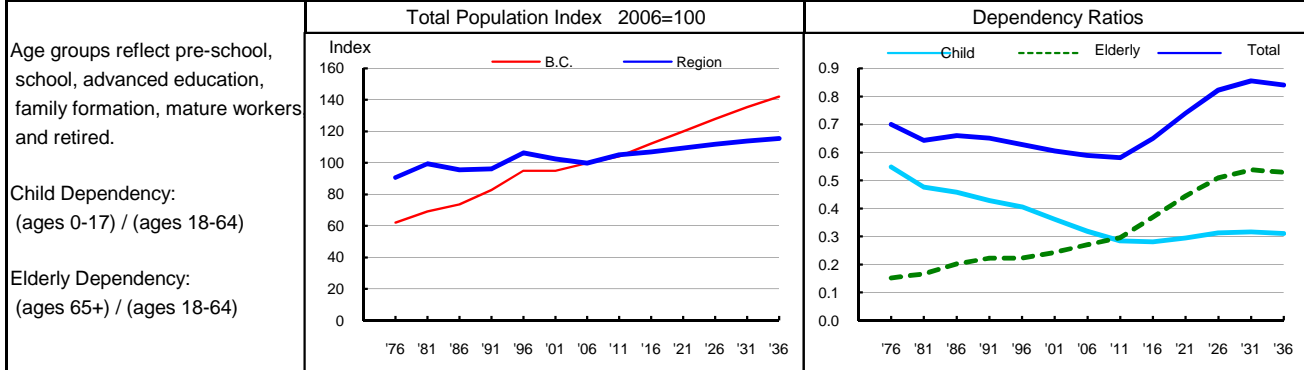
Projection

Natural increase for this region will likely become more negative over the projection period as deaths outnumber births by an increasingly wide margin. However, overall positive net migration should help to offset these losses due to natural increase. Overall, Kootenay is expected to see minimal growth over the projection period, adding less than 6,500 to its population by 2036. The population will continue to age and, by the end of the projection, this area will likely have almost 8.5 dependents for every 10 people of working age.

15

Selected Demographic Characteristics

Year	Population by age group, Thousands of persons							Households (,000)	Dependency Ratios			Year
	0-4	5-17	18-24	25-44	45-64	65+	All Ages		Child	Elderly	Total	
1976	10.0	32.0	16.6	33.8	26.3	11.6	130.2	42.6	0.548	0.152	0.700	1976
1981	10.9	30.5	18.0	42.3	26.6	14.5	142.8	50.5	0.476	0.166	0.643	1981
1986	10.2	27.6	13.1	42.6	27.0	16.7	137.1	52.0	0.457	0.202	0.659	1986
1991	9.0	26.8	11.7	43.2	28.7	18.6	138.0	53.5	0.428	0.223	0.651	1991
1996	8.8	29.2	12.6	45.3	35.9	20.9	152.8	60.7	0.405	0.223	0.628	1996
2001	7.1	26.0	11.8	38.9	41.0	22.3	147.1	61.5	0.361	0.243	0.605	2001
2006	6.4	22.3	10.5	33.2	46.5	24.5	143.4	61.6	0.319	0.271	0.590	2006
2011	6.8	20.3	13.2	32.7	49.4	28.3	150.8	66.6	0.285	0.296	0.581	2011
2016	7.0	19.2	11.9	34.1	47.0	34.3	153.6	69.7	0.281	0.369	0.650	2016
2021	7.2	19.5	10.4	36.0	43.9	40.1	157.1	72.2	0.295	0.444	0.739	2021
2026	7.2	20.3	10.2	37.5	40.5	44.9	160.6	74.0	0.312	0.510	0.822	2026
2031	7.0	20.9	10.7	38.3	39.2	47.4	163.5	75.3	0.317	0.538	0.855	2031
2036	6.9	21.1	11.2	37.1	41.8	47.7	165.7	76.6	0.311	0.529	0.840	2036



Source: Population data are Projection P-34, run in Summer 2009. Figures are adjusted for Census undercount and are for July 1st of stated year.
Note: Demographics and Projection notes in Tables 13 and 14 are from Projection P-33, run the Summer 2008.