



Cariboo
Development Region

1	General Economy
<p>Regional Districts in Development Region: Cariboo, Fraser-Fort George</p> <p>The main economic activities include forestry, agriculture, mining and tourism. This area is home to many large lumber and pulp and paper mills, some of which have announced closures or output reductions. These mills rely on the large Timber Supply Areas in this region for timber. The Annual Allowable Cuts have been increased recently for these areas, in an effort to salvage Mountain Pine Beetle affected timber, but supplies are expected to be negatively impacted in the years to come. The area is home to several large mines and significant mining exploration activity. There are several other mining projects proposed for this area and mining and oil and gas exploration continues. The tourism and recreation industries are also growing. Beef cattle and horse ranching are also important local industries.</p>	

The notes above and later in this report on Demographics and Projections are the basis for BC Stats population projection P33 completed in the Summer of 2008. The projections are updated annually to reflect known demographic shifts and economic conditions. Full projections with "Components of Change", "Special Age Groups", "5 Year Age Cohorts by Sex", and accompanying notes are available for B.C., the 8 development regions, the 28 regional districts, the 79 local health areas (LHAs) and a number of "special areas" of local interest which are not part of a province-wide geocoding system. Individual areas, including age and sex detail, are modestly priced. Users requiring only total population projections are able to self serve for free from our population projection page: www.bcstats.gov.bc.ca/data/pop/pop/popproj.asp The full B.C. level projection is available free on the above page.

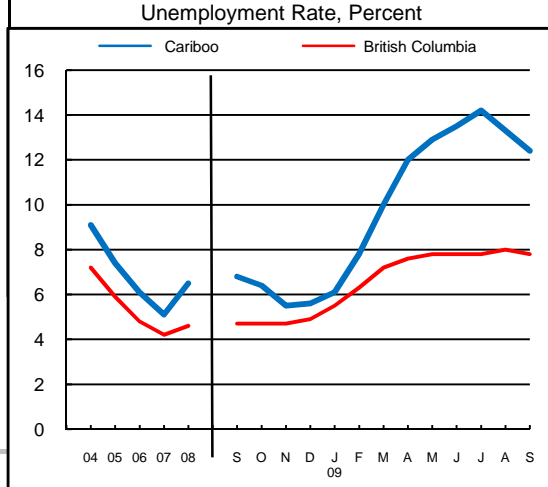
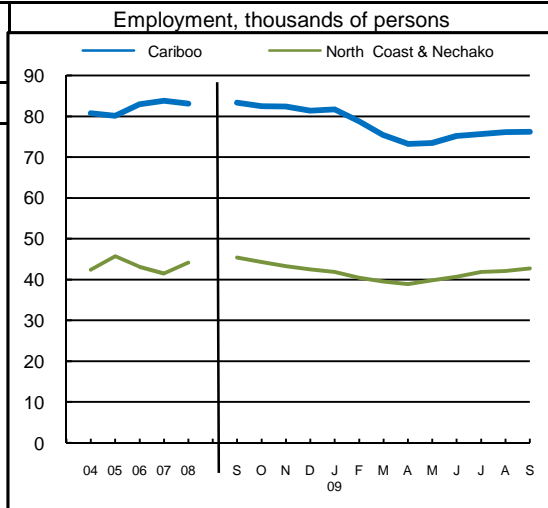
2	Economic Structure - Number of Business Locations, by Sector, by Employment Size, December 2008									
NAICS Code	Industry Sector based on NAICS Canada (North American Industrial Classification System)	Locations With No Employees	Cariboo						British Columbia	
			Firms with Employees						With Employees	
			Less Than 20	20 to 49	50 to 199	200 Plus	All Sizes with Emp.	Percent of Total	Percent of Total	All Sizes
11	Total, All Industries	5,235	5,686	533	203	43	6,465	100.0%	100.0%	175,003
	Agric., Forestry, Fishing & Hunt	856	679	46	19	1	745	11.5%	4.0%	7,009
21	Mining & Oil & Gas Extract.	24	20	1	2	0	23	0.4%	0.6%	1,071
22	Utilities	6	6	2	0	0	8	0.1%	0.1%	203
23	Construction	739	707	37	16	0	760	11.8%	12.1%	21,108
31	Manufacturing (31-33)	111	198	44	30	17	289	4.5%	4.5%	7,879
41	Wholesale Trade	134	270	43	7	0	320	4.9%	5.9%	10,359
44	Retail Trade (44-45)	296	694	70	31	5	800	12.4%	11.9%	20,742
48	Transp. & Warehousing (48-49)	496	454	33	8	3	498	7.7%	4.4%	7,734
51	Information & Cultural Indust.	30	44	5	4	0	53	0.8%	1.4%	2,412
52	Finance & Insurance	240	148	33	10	0	191	3.0%	3.8%	6,564
53	Real Estate & Rental & Leasing	686	202	6	1	2	211	3.3%	4.5%	7,835
54	Profes'nl, Scientif. & Tech. Srv	450	421	19	8	0	448	6.9%	11.0%	19,278
55	Mgmt. of Companies & Enter.	310	63	2	1	1	67	1.0%	1.6%	2,818
56	Admin. & Sup'rt, Waste Mgmt.	169	230	16	13	1	260	4.0%	4.9%	8,513
61	Educational Services	36	35	1	2	5	43	0.7%	1.4%	2,363
62	Health Care & Social Assistance	86	468	40	8	5	521	8.1%	8.4%	14,773
71	Arts, Entertainment & Recreation	62	93	15	1	1	110	1.7%	1.6%	2,873
72	Accom. & Food Services	152	335	84	31	0	450	7.0%	6.7%	11,639
81	Other Serv's (ex. Public Admin.)	352	607	22	0	1	630	9.7%	10.9%	19,095
91	Public Administration	-	12	14	11	1	38	0.6%	0.4%	735

Source: Statistics Canada, Business Register Division. Note: This table formerly identified **business establishments**.



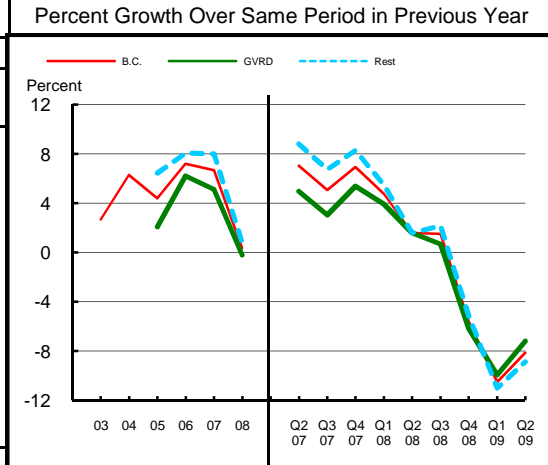
**Cariboo
Development Region**

3		Employment and Unemployment Rate, monthly data are 3-month moving average, actual, ending in stated month					
		Cariboo		North Coast & Nechako		British Columbia	
		Emp. ('000)	Unemp. %	Emp. ('000)	Unemp. %	Emp. ('000)	Unemp. %
	1999	81.4	11.6	46.7	8.8	1,894.4	8.3
	2000	79.1	9.9	47.3	10.2	1,931.3	7.1
	2001	79.4	9.7	46.6	11.2	1,921.6	7.7
	2002	78.0	12.7	44.9	12.6	1,965.0	8.5
	2003	78.2	11.1	44.8	11.3	2,014.7	8.0
	2004	80.7	9.1	42.4	11.6	2,062.7	7.2
	2005	80.1	7.4	45.7	8.1	2,130.5	5.9
	2006	82.9	6.1	43.1	6.7	2,195.5	4.8
	2007	83.8	5.1	41.5	8.0	2,266.3	4.2
	2008	83.1	6.5	44.1	7.7	2,314.3	4.6
2008	Jan	88.0	5.2	41.5	8.2	2,286.5	4.1
	Feb	86.5	5.8	42.1	7.3	2,278.9	4.2
	Mar	84.0	6.8	43.3	7.1	2,284.9	4.4
	Apr	82.9	7.7	44.3	7.9	2,295.0	4.4
	May	82.7	7.9	44.4	8.6	2,313.3	4.5
	Jun	83.5	7.0	45.4	8.5	2,329.8	4.4
	Jul	83.4	6.9	45.8	7.5	2,345.0	4.5
	Aug	83.2	7.2	46.5	7.6	2,350.7	4.6
	Sep	83.3	6.8	45.4	6.8	2,337.7	4.7
	Oct	82.5	6.4	44.3	7.7	2,325.3	4.7
	Nov	82.4	5.5	43.3	7.7	2,312.5	4.7
	Dec	81.4	5.6	42.5	8.6	2,304.8	4.9
2009	Jan	81.7	6.1	41.9	9.3	2,278.4	5.5
	Feb	78.8	7.8	40.5	9.8	2,251.1	6.3
	Mar	75.3	10.0	39.5	11.1	2,227.5	7.2
	Apr	73.2	12.0	38.9	10.6	2,229.0	7.6
	May	73.4	12.9	39.8	10.6	2,243.1	7.8
	Jun	75.2	13.5	40.7	10.0	2,264.6	7.8
	Jul	75.6	14.2	41.9	10.5	2,275.9	7.8
	Aug	76.1	13.3	42.1	11.0	2,280.5	8.0
	Sep	76.2	12.4	42.7	10.1	2,275.8	7.8
	Oct						
	Nov						
	Dec						
Average:							
ytd average based on Jan-Sep08		83.6	6.9	44.7	7.4	2,317.5	4.5
based on Jan-Sep09		75.5	12.0	40.9	10.4	2,256.0	7.6
actual data % Change		-9.7		-8.4		-2.7	



Source: Labour Force Survey, Statistics Canada. Sub-provincial regions are development regions or census metropolitan areas.

4		Retail Sales - based on Statistics Canada monthly survey						Percent Growth Over Same Period in Previous Year	
Year or Year/Quarter	\$ millions of retail sales			Percent change on year ago			B.C.	Greater Vancouver	Rest of Province
	B.C.	Greater Vancouver	Rest of Province	B.C.	Greater Vancouver	Rest of Province			
	2004	47,216.6	22,243.6	24,973.0	6.3	n/a	n/a		
	2005	49,286.3	22,702.6	26,583.7	4.4	2.1	6.4		
Annual data	2006	52,837.1	24,110.2	28,726.9	7.2	6.2	8.1		
	2007	56,365.4	25,342.8	31,022.6	6.7	5.1	8.0		
	2008	56,562.4	25,290.5	31,271.8	0.3	-0.2	0.8		
Quarterly data	08 2	14,749.1	6,626.3	8,122.8	1.6	1.6	1.6		
	08 3	14,923.3	6,466.4	8,456.9	1.5	0.7	2.2		
	08 4	14,053.2	6,340.4	7,712.7	-5.6	-6.2	-5.2		
	09 1	11,485.1	5,274.5	6,210.5	-10.5	-10.0	-11.0		
	09 2	13,550.1	6,150.0	7,400.1	-8.1	-7.2	-8.9		



Source: B.C. & GVRD data - Statistics Canada, monthly survey (CANSIM 080-0015).



**Cariboo
Development Region**

Was 5 **Manufacturing Principal Statistics - Search at www.made-in-bc.ca for local firms, products and more**

This table is discontinued. Sub-provincial manufacturing principal statistics are no longer being produced.

5		Tourism Room Revenue (\$ Thousands)					Tourism Room Revenue Index 2003=100			
	Year	Total/YTD	Q1	Q2	Q3	Q4	Index			
Cariboo Dev. Region	2005	49,271.5	8,397.6	13,274.7	17,419.6	10,179.7				
	2006	54,700.6	9,413.8	13,899.6	19,507.3	11,880.0				
	2007	61,891.6	11,208.1	16,033.0	21,314.1	13,336.3				
	2008	62,201.7	11,763.7	16,954.8	21,286.1	12,197.1				
	2009	23,882.4	10,122.5	13,759.9						
British Columbia	2005	1,681,563.6	351,779.6	404,639.8	610,273.7	314,870.6				
	2006	1,807,608.7	366,165.1	450,747.7	652,476.4	338,219.5				
	2007	1,963,958.7	412,949.3	488,493.9	697,545.2	364,970.3				
	2008	1,977,424.9	435,223.9	503,276.7	687,708.3	351,215.9				
	2009	802,329.6	378,880.1	423,449.6						
2008 Room Revenue by Accommodation Type (\$Thousands %Share)										
TOTAL	62,017.0	100.0%								
Fishing lodges	957.0	1.5%								
Hotels	33,405.0	53.9%								
1-75 Rooms	9,206.0	14.8%								
Motels	23,149.0	37.3%								
Vacation Rentals	1,924.0	3.1%								
Miscellaneous	2,582.0	4.2%								
asterisk before location denotes sub-area detail										

Source: Hotel tax database maintained by Consumer Taxation Branch, Ministry of Small Business and Revenue
Published in detail monthly by BC Stats.

All room revenue data has been revised. For an explanation, see our periodical called *Tourism Sector Monitor*, April and May issues of 2009.
Link to explanation of changes: http://www.bcstats.gov.bc.ca/pubs/pr_tour.asp

6		Building Permits						Total Permits Index 2003=100	
Year	Total Building Permits	Non Residential				Residential		Index	
		Total Non Res.	Industrial	Commercial	Institutional & Gov't	Units			
		<-- \$ Millions -->							
2001	115.2	81.2	4.0	21.3	55.9	34.0	183		
2002	88.5	45.7	10.2	25.7	9.8	42.8	240		
2003	125.4	89.6	6.5	52.0	31.2	35.8	204		
2004	121.2	59.6	16.2	32.3	11.1	61.6	362		
2005	203.0	130.4	38.0	30.3	62.0	72.6	404		
2006	170.3	76.8	7.2	36.2	33.4	93.5	487		
2007	257.4	103.6	10.4	53.3	39.9	153.8	607		
2008	238.4	111.3	6.2	35.1	70.0	127.1	522		
Jan-Aug 08	143.9	45.8	2.1	22.2	21.5	98.2	376		
Jan-Aug 09	107.4	38.4	1.2	24.1	13.2	69.0	257		

Not all projects require a building permit, and not all municipalities & regions report. Latest month preliminary, previous month is revised.
Source: Statistics Canada (data collected from municipal and Regional District offices).

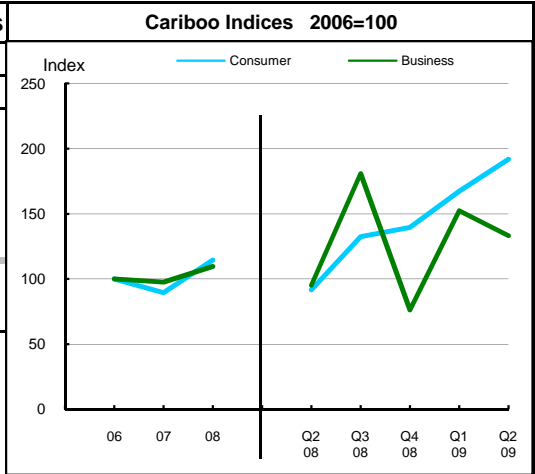


**Cariboo
Development Region**

7 Business and Consumer Bankruptcies, Quarterly - NEW series						
Year	Cariboo		British Columbia		Consumer	Business
	Consumer	Business	Consumer	Business		
2006	344	42	7,020	585		
2007	308	41	6,651	470		
2008	394	46	7,293	454		
2009						
2010						
YTD-08	160	19	3,335	202		
YTD-09	309	30	5,400	232		

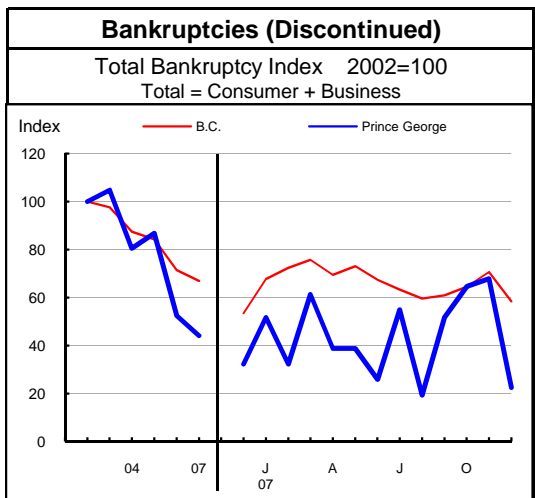
Source: Office of the Superintendent of Bankruptcy, Government of Canada
Total bankruptcy index includes business and consumer bankruptcies.

Note: Bankruptcy is not a good measure of business failure. Most firms that fail wind down operations and withdraw from business.



8 Incorporations			
Year	Incorporations	Incorporations Index 2003=100	
		B.C.	Region
2001	431		
2002	404		
2003	344		
2004	428		
2005	511		
2006	601		
2007	560		
2008	557		
Jan-Sep 08	446		
Jan-Sep 09	343		

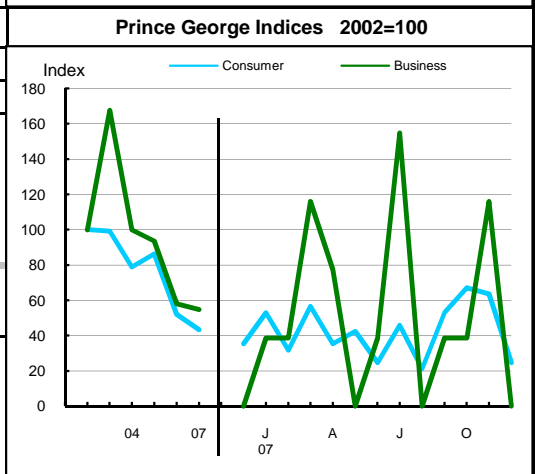
Source: Incorporations - (B.C.) Ministry of Finance



9 Business and Consumer Bankruptcies (Discontinued)						
Year	Prince George		Williams Lake		Quesnel	
	Consumer	Business	Consumer	Business	Consumer	Business
2003	337	52	132	22	87	14
2004	268	31	85	16	73	9
2005	293	29	89	12	71	10
2006	177	18	82	14	58	10
2007	147	17	78	8	59	10
Jan-Dec 06	177	18	82	14	58	10
Jan-Dec 07	147	17	78	8	59	10

Source: Office of the Superintendent of Bankruptcy, Government of Canada
Total bankruptcy index includes business and consumer bankruptcies.

Note: Bankruptcy is not a good measure of business failure. Most firms that fail wind down operations and withdraw from business.





**Cariboo
Development Region**

Dependence on the Safety Net

10 Basic Income Assistance (Basic Income Assistance Recipients in Subject Group as a percent of Reference Group)							11 Employment Insurance (was UI) (EI beneficiaries as a percent of Reference Group)													
Subject Group (receiving benefits)		All (0-64)	Children <19 yrs in Families	Young Adults (19-24)	'Mid' Group (25-54)	Single Parent Women	Working Age (19-64)	Young Adults (19-24)	'Mid' Group (25-54)	'Older' Workers (55-64)	Note Older Data									
Reference Group		Total Pop. 0-64	Total Pop. <19	Total Pop. 19-24	Total Pop. 25-54	Tot. Female 19-64	Total Pop. 19-64	Total Pop. 19-24	Total Pop. 25-54	Total Pop. 55-64										
Cariboo Dev. Region	Sep '07	2.4	3.8	2.7	2.1	1.3	3.4	3.9	3.7	2.3	Mar '07									
	Dec '07	2.4	3.6	2.8	2.2	1.2	3.1	3.0	3.4	2.2	Jun '07									
	Mar '08	2.5	3.7	2.9	2.4	1.2	2.3	2.4	2.5	1.7	Sep '07									
	Jun '08	2.6	3.8	3.1	2.4	1.3	3.1	3.9	3.2	2.3	Dec '07									
	Sep '08	2.6	4.0	3.0	2.4	1.3	4.1	4.8	4.4	2.7	Mar '08									
	Dec '08	2.8	4.1	3.3	2.6	1.3	7.8	7.5	8.6	5.5	Jun '08									
	Mar '09	3.3	4.6	4.1	3.1	1.4	3.2	3.1	3.6	2.1	Sep '08									
	Jun '09	3.5	4.9	4.7	3.3	1.6	4.6	4.9	4.9	3.2	Dec '08									
	Sep '09	3.6	5.0	4.6	3.4	1.6	7.5	8.7	8.1	4.8	Mar '09									
Duration of Dependence on Income Assistance (As of September 2009)		All* Income Assistance Recipients as % of Total Pop 0-64: Region Compared to B.C.					EI Beneficiaries Aged 19-64 as % of Working Age Population													
Region		Percent					Percent													
B.C.		Region					B.C.					Region								
Total Number of Recipients	4,978																			
Percent Distribution by Duration		<table border="1"> <tr> <td><1 Year</td> <td>63.5</td> <td>65.3</td> </tr> <tr> <td>1-2 Years</td> <td>18.9</td> <td>18.2</td> </tr> <tr> <td>>2 Years</td> <td>17.6</td> <td>16.4</td> </tr> </table>					<1 Year	63.5	65.3	1-2 Years	18.9	18.2	>2 Years	17.6	16.4					
<1 Year	63.5	65.3																		
1-2 Years	18.9	18.2																		
>2 Years	17.6	16.4																		
<p>Source: Ministry of Children and Family Development administrative files and BC Stats population estimates. These figures include only a subset of those receiving income assistance. Excluded are those on Continuous Assistance (disabled or with persistent multiple barriers to employment, children in the home of a relative, and OAS/seniors. A recipient is defined as 'each person living in a family or living alone that is receiving basic income assistance'. Data does not include Aboriginal people living on Reserve. Note: '-' Data too small to release.</p>							<p>Source: Ministry of Housing and Social Development and BC Stats population estimates.</p>													
12 Dependence on Basic Income Assistance and/or Employment Insurance (Basic Income Assistance Recipients + Employment Insurance Recipients in Subject Group as a percent of Reference Group)																				
Subject Group (receiving assistance)		All (19-64)	Young Adults (19-24)	'Mid' Group (25-54)	'Older' Group (55-64)	All 'Safety Net' Recipients as % of Total Pop 19-64: Region Compared to B.C.														
Reference Group		Total Pop. 19-64	Total Pop. 19-24	Total Pop. 25-54	Total Pop. 55-64	Percent														
Cariboo Dev. Region	Mar '07	5.3	6.5	5.7	3.0															
	Jun '07	5.0	5.8	5.4	3.0															
	Sep '07	4.1	4.9	4.5	2.3															
	Dec '07	5.0	6.6	5.3	3.1															
	Mar '08	6.1	7.5	6.6	3.4															
	Jun '08	9.8	10.4	10.8	6.3															
	Sep '08	5.3	5.9	5.9	2.9															
	Dec '08	6.7	8.1	7.3	3.9															
	Mar '09	10.2	12.7	11.1	5.7															

Note: The EI figures reported above no longer include persons claiming parental/adoption leave. Previous issues of this table did include them.



**Cariboo
 Development Region**

13 Demographics

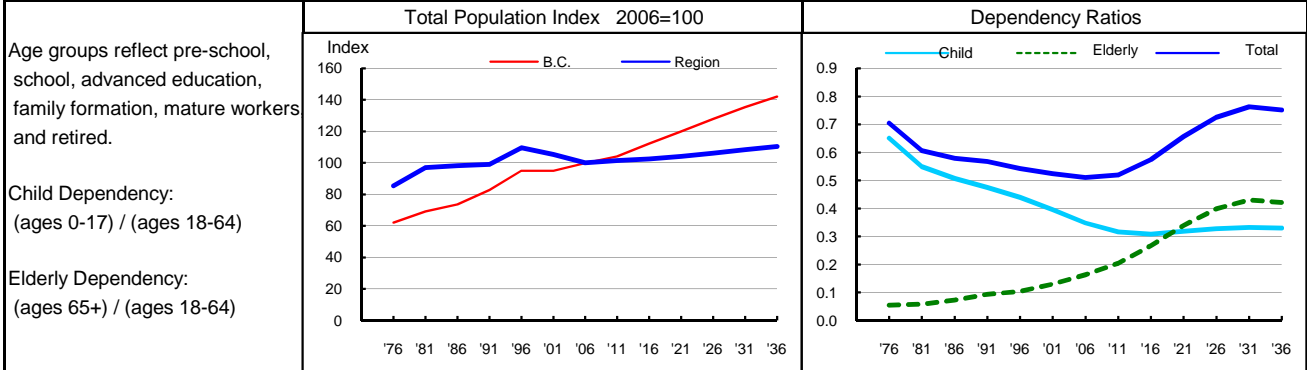
Cariboo has seen periods of growth as well as net loss of population since the mid 1980s. It has also experienced shifts in the structure of its population. Although it has aged, adding over 10.5 years to its median age since 1986, this is a relatively young population, with a median age over one year younger than the provincial median. The sex ratio is weighted in favour of males, in contrast to the province as a whole, where there are more females than males. This is likely due to the dependence on male-dominated resource industries. Consistent with its rural character, fertility has been higher than the provincial rate, despite having declined since the mid 1990s. Declining fertility contributes to a decrease in the ratio of children (17 years and under) to working age population (aged 18 to 64), although it remains higher than the provincial ratio. In contrast, there are proportionately fewer elderly people (aged 65 and older) than in the province as a whole although the elderly dependency ratio has doubled in the last twenty years. Dwindling fertility and an ageing population leads to a decline in the number of births and an increase in the number of deaths. As natural increase (the excess of births over deaths) diminishes, net migration becomes the more important driver of population growth. Despite continuing growth from natural increase, large net outflows in most years since 1997 have led to a 6 percent drop in population during that period.

14 Projection

Cariboo has generally experienced strong net outflows over the last decade or so. This trend is expected to continue over the first decade of the projection, after which the region will likely receive increasingly strong net inflows. Natural increase is expected to become negative halfway through the projection period as births decline and the population ages. Overall though, the area should see a marginal increase in its population, growing by almost 7,000 during the next 30 years. As the population continues to age, overall dependency is expected to increase significantly. By 2036, Cariboo will likely have about 7.5 dependents for every 10 people of working age, compared with a ratio of 5:10 in 2007.

15 Selected Demographic Characteristics

Year	Population by age group, Thousands of persons							Households (,000)	Dependency Ratios			Year
	0-4	5-17	18-24	25-44	45-64	65+	All Ages		Child	Elderly	Total	
1976	13.4	38.0	18.9	41.5	18.5	4.3	134.6	38.9	0.651	0.054	0.705	1976
1981	14.7	37.5	22.3	51.1	21.8	5.5	152.9	48.0	0.548	0.058	0.607	1981
1986	13.8	35.9	18.6	54.3	25.3	7.2	155.0	52.0	0.506	0.073	0.579	1986
1991	12.5	34.8	15.8	54.9	28.9	9.3	156.3	53.9	0.475	0.093	0.568	1991
1996	12.3	36.9	17.5	58.6	35.9	11.6	172.8	61.7	0.439	0.104	0.543	1996
2001	9.9	33.1	16.0	51.1	41.9	14.1	166.0	63.0	0.395	0.129	0.524	2001
2006	8.5	27.8	15.0	42.6	46.7	17.0	157.6	62.7	0.348	0.163	0.511	2006
2011	8.9	24.3	15.6	40.1	49.5	21.5	159.9	65.9	0.316	0.204	0.520	2011
2016	8.6	23.0	13.5	40.6	48.4	27.4	161.5	69.1	0.308	0.267	0.575	2016
2021	8.5	23.0	12.1	41.7	45.5	33.6	164.3	71.3	0.318	0.339	0.657	2021
2026	8.4	23.3	11.9	43.1	42.0	38.7	167.5	73.0	0.327	0.399	0.726	2026
2031	8.3	23.8	12.5	43.6	40.9	41.7	170.8	74.4	0.332	0.431	0.763	2031
2036	8.5	24.3	12.8	43.6	43.1	41.9	174.1	75.7	0.330	0.422	0.751	2036



Source: Population data are Projection P-34, run in Summer 2009. Figures are adjusted for Census undercount and are for July 1st of stated year.
 Note: Demographics and Projection notes in Tables 13 and 14 are from Projection P-33, run the Summer 2008.