



**Central Kootenay
 Regional District**

1	General Economy
<p>Municipalities in Regional District: Castlegar, Creston, Kaslo, Nakusp, Nelson, New Denver, Salmo, Silverton, Slocan</p> <p>The area is made up of high mountain ranges separated by deep valleys which run roughly north and south. The area is dependent on the forestry industry and has several lumber mills, some of which have announced closures or output reductions. The annual allowable cuts of the regions timber supply areas have remained steady and provide significant harvesting employment in the area. The rivers that traverse the region provide abundant hydro electric power for the province, and power project expansions are underway and planned for the Nelson and Castlegar areas. The out-door activities surrounding the growing tourism sector involve Kootenay Lake and many provincial parks in the area. The retirement community is growing, helping to expand the service sector. Agricultural activities in this area include cattle ranching and fruit and tree nut farming.</p>	

The notes above and later in this report on Demographics and Projections are the basis for BC Stats population projection P33 completed in the Summer of 2008. The projections are updated annually to reflect known demographic shifts and economic conditions. Full projections with "Components of Change", "Special Age Groups", "5 Year Age Cohorts by Sex", and accompanying notes are available for B.C., the 8 development regions, the 28 regional districts, the 79 local health areas (LHAs) and a number of "special areas" of local interest which are not part of a province-wide geocoding system. Individual areas, including age and sex detail, are modestly priced. Users requiring only total population projections are able to self serve for free from our population projection page: www.bcstats.gov.bc.ca/data/pop/pop/popproj.asp The full B.C. level projection is available free on the above page.

2 Economic Structure - Number of Business Locations, by Sector, by Employment Size, December 2010

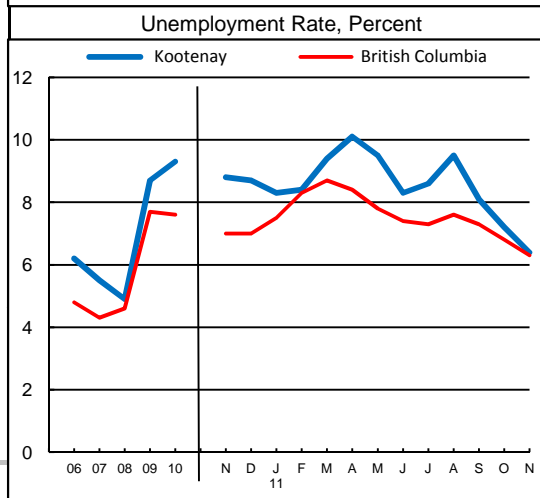
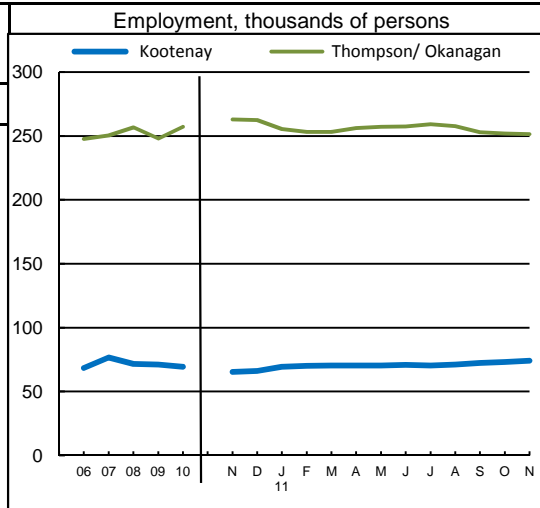
NAICS Code	Industry Sector based on NAICS Canada (North American Industrial Classification System)	Locations With No Employees	Central Kootenay						British Columbia	
			Firms with Employees						With Employees	
			Less Than 20	20 to 49	50 to 199	200 Plus	All Sizes with Emp.	Percent of Total	Percent of Total	All Sizes
	Total, All Industries	2,233	2,204	128	64	12	2,408	100.0%	100.0%	370,262
11	Agric., Forestry, Fishing & Hunt	235	166	11	4	0	181	7.5%	4.1%	15,134
21	Mining & Oil & Gas Extract.	12	10	2	0	0	12	0.5%	0.6%	2,220
22	Utilities	8	9	0	1	0	10	0.4%	0.1%	363
23	Construction	396	308	6	5	1	320	13.3%	14.0%	51,926
31	Manufacturing (31-33)	81	91	8	8	3	110	4.6%	3.2%	11,824
41	Wholesale Trade	56	60	3	1	0	64	2.7%	4.4%	16,471
44	Retail Trade (44-45)	139	336	18	11	1	366	15.2%	8.1%	30,041
48	Transp. & Warehousing (48-49)	111	99	4	0	0	103	4.3%	5.1%	18,964
51	Information & Cultural Indust.	35	34	1	1	0	36	1.5%	1.5%	5,509
52	Finance & Insurance	103	53	10	1	0	64	2.7%	5.4%	19,946
53	Real Estate & Rental & Leasing	320	96	2	1	0	99	4.1%	11.2%	41,389
54	Profes'nl, Scientif. & Tech. Srv	252	188	4	3	0	195	8.1%	13.1%	48,449
55	Mgmt. of Companies & Enter.	79	17	0	1	0	18	0.7%	3.9%	14,283
56	Admin. & Sup'rt, Waste Mgmt.	87	74	2	1	0	77	3.2%	4.5%	16,769
61	Educational Services	21	15	3	2	3	23	1.0%	1.2%	4,290
62	Health Care & Social Assistance	60	174	12	12	3	201	8.3%	5.6%	20,661
71	Arts, Entertainment & Recreation	40	67	7	3	0	77	3.2%	1.7%	6,187
72	Accom. & Food Services	66	177	28	3	0	208	8.6%	4.3%	15,964
81	Other Serv's (ex. Public Admin.)	132	206	6	3	0	215	8.9%	7.8%	28,939
91	Public Administration	-	24	1	3	1	29	1.2%	0.3%	933

Source: Statistics Canada, Business Register Division. Note: This table formerly identified **business establishments**.



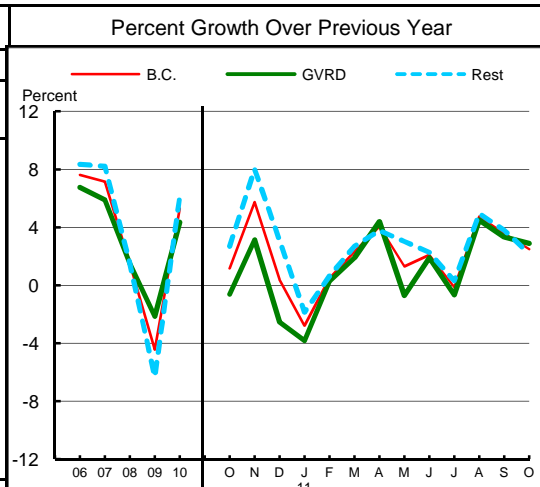
Central Kootenay
 Regional District

3 Employment and Unemployment Rate, monthly data are 3-month moving average, actual, ending in stated month						
	Kootenay		Thompson/ Okanagan		British Columbia	
	Emp. ('000)	Unemp. %	Emp. ('000)	Unemp. %	Emp. ('000)	Unemp. %
2001	70.4	9.7	210.4	9.4	1,919.7	7.7
2002	66.2	9.9	207.2	9.4	1,952.8	8.5
2003	66.7	11.7	217.4	8.8	1,998.0	8.0
2004	65.8	9.2	226.6	6.6	2,032.8	7.2
2005	67.8	6.2	239.5	5.2	2,091.9	5.8
2006	68.4	6.2	247.6	5.0	2,147.2	4.8
2007	76.7	5.5	250.4	4.4	2,222.6	4.3
2008	71.6	4.9	256.6	5.5	2,266.4	4.6
2009	71.0	8.7	248.0	8.8	2,217.9	7.7
2010	69.4	9.3	257.2	8.6	2,256.5	7.6
2010 Jan	71.6	9.6	255.4	8.7	2,219.8	8.0
2010 Feb	71.4	9.4	251.6	9.4	2,213.3	8.1
2010 Mar	70.6	10.7	254.0	9.3	2,213.2	8.2
2010 Apr	70.0	9.2	254.2	9.1	2,224.5	7.8
2010 May	70.7	8.3	253.7	9.1	2,238.7	7.8
2010 Jun	70.5	7.6	255.1	8.4	2,258.8	7.6
2010 Jul	71.6	9.0	256.6	8.1	2,277.1	7.7
2010 Aug	71.5	10.5	259.0	8.1	2,289.9	7.8
2010 Sep	70.5	10.2	257.1	8.7	2,284.5	7.8
2010 Oct	66.5	9.4	261.0	8.6	2,278.8	7.5
2010 Nov	65.3	8.8	262.9	8.3	2,273.6	7.0
2010 Dec	66.0	8.7	262.4	8.0	2,269.6	7.0
2011 Jan	69.3	8.3	255.5	9.0	2,250.0	7.5
2011 Feb	70.0	8.4	253.2	9.3	2,232.3	8.3
2011 Mar	70.2	9.4	253.3	9.3	2,227.7	8.7
2011 Apr	70.4	10.1	256.2	8.8	2,240.5	8.4
2011 May	70.3	9.5	257.1	8.4	2,261.0	7.8
2011 Jun	70.7	8.3	257.4	8.1	2,280.1	7.4
2011 Jul	70.4	8.6	259.2	7.4	2,295.3	7.3
2011 Aug	71.1	9.5	257.6	6.9	2,298.0	7.6
2011 Sep	72.3	8.1	253.0	7.3	2,300.7	7.3
2011 Oct	73.2	7.2	251.9	7.2	2,299.8	6.8
2011 Nov	74.2	6.4	251.5	6.9	2,296.6	6.3
2011 Dec						
Average:						
Jan-Nov10	69.5	9.3	257.3	8.7	2,256.8	7.7
Jan-Nov11	71.7	8.4	254.8	7.9	2,273.7	7.5
% Change	3.1		-1.0		0.7	



Source: Labour Force Survey, Statistics Canada. Sub-provincial regions are development regions or census metropolitan areas.

4 Retail Sales - based on Statistics Canada monthly survey						
Year or Year/Year-to-Date	\$ millions of retail sales			Percent change on year ago		
	B.C.	Greater Vancouver	Rest of Province	B.C.	Greater Vancouver	Rest of Province
2006	53,133.4	24,301.6	28,831.9	7.6	6.7	8.3
2007	56,930.4	25,733.1	31,197.3	7.1	5.9	8.2
2008	57,783.0	26,116.0	31,667.0	1.5	1.5	1.5
2009	55,221.9	25,556.4	29,665.6	-4.4	-2.1	-6.3
2010	58,144.7	26,667.6	31,477.1	5.3	4.3	6.1
Jan-Sep 2010	42,773.1	19,620.4	23,152.6			
Jan-Sep 2011	43,551.2	19,871.0	23,680.1	1.8	1.3	2.3



Source: B.C. & GVRD data - Statistics Canada, CANSIM 080-0020, unadjusted data.



**Central Kootenay
 Regional District**

Was 5 **Manufacturing Principal Statistics - Search at www.made-in-bc.ca for local firms, products and more**

This table is discontinued. Sub-provincial manufacturing principal statistics are no longer being produced.

The methodology used to generate Room Revenue estimates is being refined and as a result the regularly scheduled release of the data from April through August 2011 was interrupted. BC Stats will be publishing updated estimates, including revisions to previously-released data, in September of 2011. We apologize for any inconvenience to users.

5		Tourism Room Revenue (\$ Thousands)					Tourism Room Revenue Index 2004=100	
	Year	Total/YTD	Q1	Q2	Q3	Q4	Index	
Central Kootenay Regional District	2006	20,408.0	3,696.0	4,547.0	8,541.0	3,624.0		
	2007	24,633.0	4,646.0	5,639.0	10,170.0	4,178.0		
	2008	23,769.0	4,616.0	6,026.0	9,460.0	3,667.0		
	2009	22,349.0	4,294.0	5,300.0	9,030.0	3,725.0		
	2010	18,838.0	4,716.0	5,384.0	8,738.0			
British Columbia	2006	1,807,466.0	366,131.0	450,720.0	652,402.0	338,213.0		
	2007	1,807,466.0	366,131.0	450,720.0	652,402.0	338,213.0		
	2008	1,977,385.0	435,234.0	503,243.0	687,790.0	351,118.0		
	2009	1,743,074.0	378,897.0	423,761.0	617,008.0	323,408.0		
	2010	1,594,984.0	502,294.0	441,819.0	650,871.0			
2009 Room Revenue by Accommodation Type (\$Thousands %Share)								
TOTAL	21,680.0	100.0%						
Hotels	6,789.0	31.3%						
Miscellaneous	5,220.0	24.1%						
*City of Nelson	7,486.0	34.5%						

asterisk before location denotes sub-area detail

Source: Hotel tax database maintained by Consumer Taxation Branch, Ministry of Small Business and Revenue
 Published in detail monthly by BC Stats.

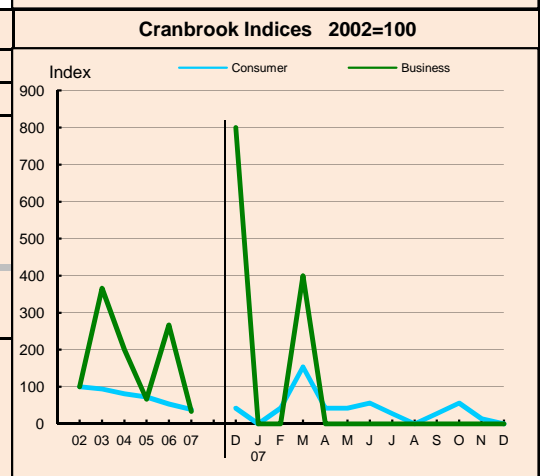
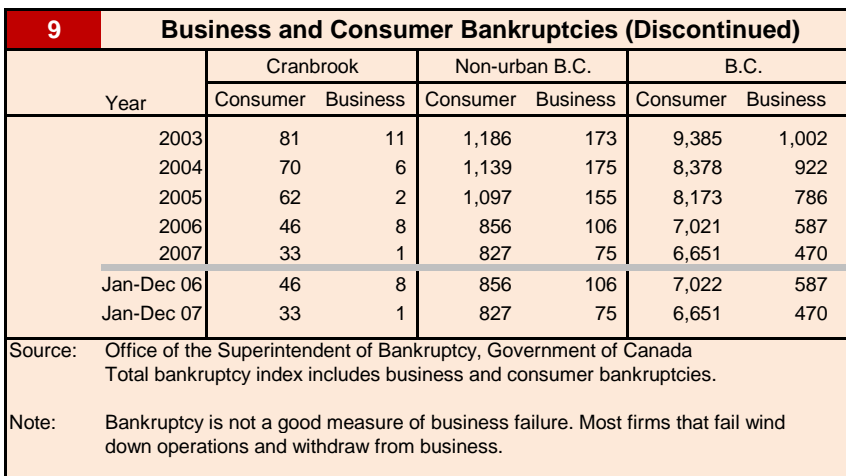
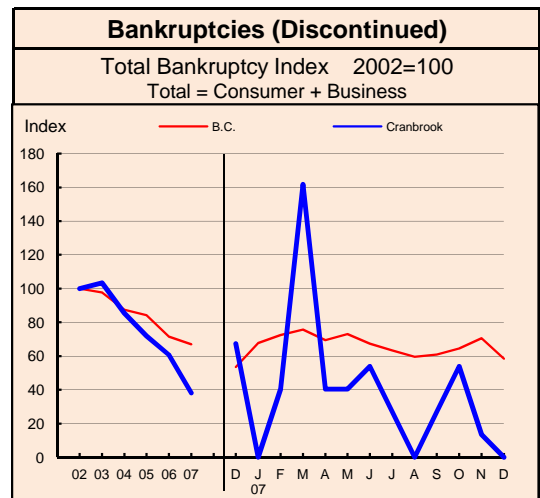
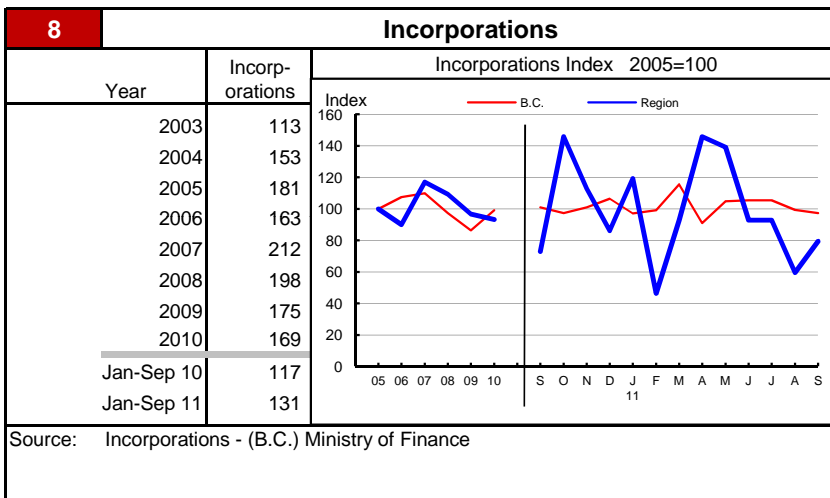
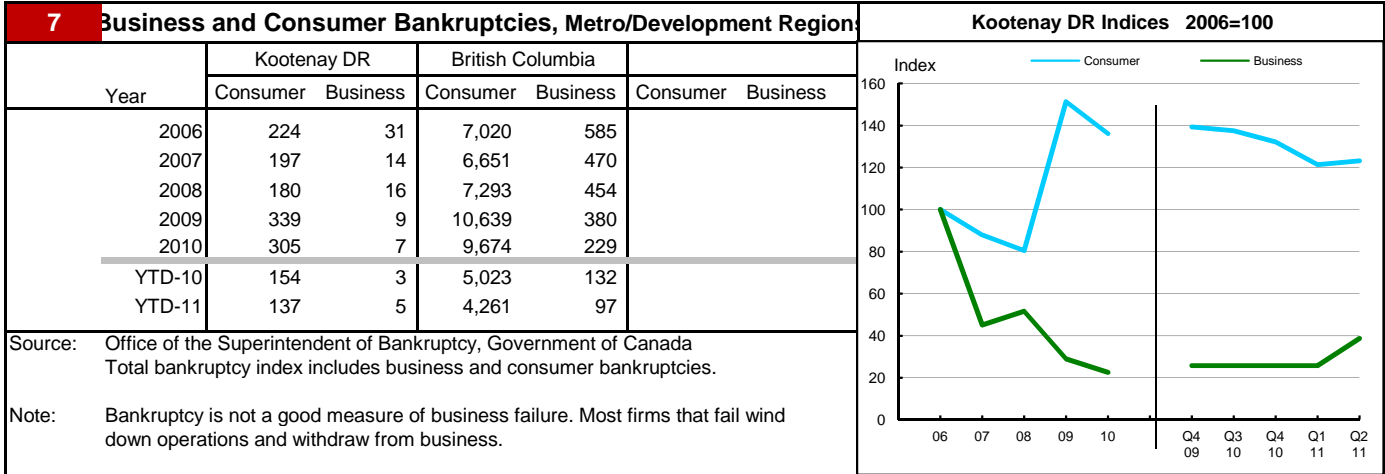
All room revenue data has been revised. For an explanation, see our periodical called *Tourism Sector Monitor*, April and May issues of 2009.
 Link to explanation of changes: http://www.bcstats.gov.bc.ca/pubs/pr_tour.asp

6		Building Permits						Total Permits Index 2005=100	
Year	Total Building Permits	Non Residential				Residential	Units	Index	
		Total Non Res.	Industrial	Commercial	Institutional & Gov't			B.C.	Region
		<-- \$ Millions -->							
2003	40.5	13.2	0.6	5.4	7.2	27.3	151		
2004	65.7	31.1	10.7	12.5	7.8	34.6	175		
2005	72.5	11.3	2.7	6.1	2.6	61.1	349		
2006	75.9	10.7	1.4	4.8	4.6	65.2	297		
2007	109.3	30.7	2.1	12.4	16.3	78.6	352		
2008	122.7	20.4	2.1	16.1	2.2	102.3	547		
2009	83.0	20.9	2.8	7.7	10.4	62.1	252		
2010	112.8	42.5	12.3	21.1	9.2	70.3	282		
Jan-Oct 10	105.9	41.7	12.3	20.4	9.0	64.3	259		
Jan-Oct 11	78.6	23.0	2.3	17.0	3.7	55.6	214		

Not all projects require a building permit, and not all municipalities & regions report. Latest month preliminary, previous month is revised.
 Source: Statistics Canada (data collected from municipal and Regional District offices).



Central Kootenay
 Regional District





Central Kootenay
 Regional District

Dependence on the Safety Net

10 Basic Income Assistance (Basic Income Assistance Recipients in Subject Group as a percent of Reference Group)							11 Employment Insurance (was UI) (EI beneficiaries as a percent of Reference Group)																										
Subject Group (receiving benefits)		All (0-64)	Children <19 yrs in Families	Young Adults (19-24)	'Mid' Group (25-54)	Single Parent Women	Working Age (19-64)	Young Adults (19-24)	'Mid' Group (25-54)	'Older' Workers (55-64)	Note Older Data																						
Reference Group		Total Pop. 0-64	Total Pop. <19	Total Pop. 19-24	Total Pop. 25-54	Tot. Female 19-64	Total Pop. 19-64	Total Pop. 19-24	Total Pop. 25-54	Total Pop. 55-64																							
Central Kootenay Regional District	Sep '08	1.6	2.6	1.5	1.6	0.8	1.6	1.5	1.8	1.0	Sep '07																						
	Dec '08	2.0	3.0	2.3	2.0	0.8	3.3	3.4	3.7	2.0	Dec '07																						
	Mar '09	2.4	3.3	2.6	2.6	0.9	3.7	4.0	4.3	2.2	Mar '08																						
	Jun '09	2.3	3.4	2.5	2.4	0.9	4.0	3.9	4.4	3.0	Jun '08																						
	Sep '09	2.3	3.4	2.3	2.4	0.9	2.0	1.6	2.3	1.3	Sep '08																						
	Dec '09	2.5	3.4	3.0	2.7	1.0	3.5	3.9	3.9	2.2	Dec '08																						
	Mar '10	2.6	3.3	3.3	2.8	0.9	5.1	5.8	5.9	3.0	Mar '09																						
	Jun '10	2.4	3.2	2.7	2.5	0.9	3.9	4.0	4.5	2.3	Jun '09																						
	Sep '10	2.4	3.3	2.6	2.4	1.0	3.5	3.6	4.1	2.0	Sep '09																						
Duration of Dependence on Income Assistance (As of September 2010)		All* Income Assistance Recipients as % of Total Pop 0-64: Region Compared to B.C.					EI Beneficiaries Aged 19-64 as % of Working Age Population																										
Region		Percent					Percent																										
Total Number of Recipients	1,164																																
Percent Distribution by Duration		<table border="1"> <thead> <tr> <th>Region</th> <th>B.C.</th> </tr> </thead> <tbody> <tr> <td><1 Year</td> <td>58.7</td> <td>56.9</td> </tr> <tr> <td>1-2 Years</td> <td>26.1</td> <td>24.5</td> </tr> <tr> <td>>2 Years</td> <td>15.2</td> <td>18.6</td> </tr> </tbody> </table>					Region	B.C.	<1 Year	58.7	56.9	1-2 Years	26.1	24.5	>2 Years	15.2	18.6	<table border="1"> <thead> <tr> <th>Region</th> <th>B.C.</th> </tr> </thead> <tbody> <tr> <td><1 Year</td> <td>58.7</td> <td>56.9</td> </tr> <tr> <td>1-2 Years</td> <td>26.1</td> <td>24.5</td> </tr> <tr> <td>>2 Years</td> <td>15.2</td> <td>18.6</td> </tr> </tbody> </table>					Region	B.C.	<1 Year	58.7	56.9	1-2 Years	26.1	24.5	>2 Years	15.2	18.6
Region	B.C.																																
<1 Year	58.7	56.9																															
1-2 Years	26.1	24.5																															
>2 Years	15.2	18.6																															
Region	B.C.																																
<1 Year	58.7	56.9																															
1-2 Years	26.1	24.5																															
>2 Years	15.2	18.6																															
Source: Ministry of Social Development administrative files and BC Stats population estimates. These figures include only a subset of those receiving income assistance. Excluded are those on Continuous Assistance (disabled or with persistent multiple barriers to employment, children in the home of a relative, and OAS/seniors. A recipient is defined as 'each person living in a family or living alone that is receiving basic income assistance'. Data does not include Aboriginal people living on Reserve. Note: '-' Data too small to release.							Source: Ministry of Social Development and BC Stats population estimates.																										
12 Dependence on Basic Income Assistance and/or Employment Insurance (Basic Income Assistance Recipients + Employment Insurance Recipients in Subject Group as a percent of Reference Group)																																	
Subject Group (receiving assistance)		All (19-64)	Young Adults (19-24)	'Mid' Group (25-54)	'Older' Group (55-64)	All 'Safety Net' Recipients as % of Total Pop 19-64: Region Compared to B.C.																											
Reference Group		Total Pop. 19-64	Total Pop. 19-24	Total Pop. 25-54	Total Pop. 55-64	Percent																											
Central Kootenay Regional District	Sep '07	2.9	3.5	3.4	1.4																												
	Dec '07	4.6	5.2	5.4	2.4																												
	Mar '08	5.1	5.7	6.0	2.6																												
	Jun '08	5.3	5.4	6.0	3.5																												
	Sep '08	3.2	2.9	3.9	1.6																												
	Dec '08	5.0	6.1	5.8	2.7																												
	Mar '09	7.1	8.1	8.3	3.7																												
	Jun '09	5.8	6.4	6.8	3.1																												
	Sep '09	5.3	5.8	6.4	2.6																												

Note: This data should be revamped in early 2012 with EI data coming from Statistics Canada and IA data from Ministry of Social Development.



**Central Kootenay
 Regional District**

13 Demographics

Like many resource dependent regions in the province, Central Kootenay had more people moving out than moving in during the mid-eighties and again from 1998. However, net migration to this region through the mid-nineties was very high, leading to strong growth in these years. The population has aged, adding over 9.5 years to its median age since the mid 1980s, compared with a provincial gain of 7.2 years. By 2007, the median age of the population in this region was almost five years older than the provincial median. Total fertility rates have decreased over the last twenty years, but remain higher than provincial rates. Along with fertility, the ratio of children aged 17 and under to those of working ages (18 to 64) has been on the decline. Nonetheless, the proportion of children in the population is still higher than corresponding provincial ratios. Already much higher in the mid 1980s, elderly dependency ratios have increased. The number of males and females is almost equal, in contrast to the province as a whole, where there are more females than males. Natural increase has been declining rapidly, and births outnumbered deaths until very recently. Population change is now most strongly influenced by movements of people in and out of the region. Decreasing natural increase and mainly negative net migration has resulted in a net loss of population in this region over much of the last decade. However, positive net migration in recent years have resulted in a gain in population, particularly in 2007.

14 Projection

Net migration should become more strongly positive as the economy diversifies, more than offsetting losses due to negative natural increase in the latter portion of the projection period. However, deaths will continue to outnumber births by an increasing margin, lowering the population growth rate. The population of this area is expected to grow marginally over the next 30 years, adding 4,400 people to its population. As the population continues to age, overall dependency will increase and, by 2036, there will likely be over 8 dependents for every 10 people of working age. Most of these dependents will be aged 65 and older.

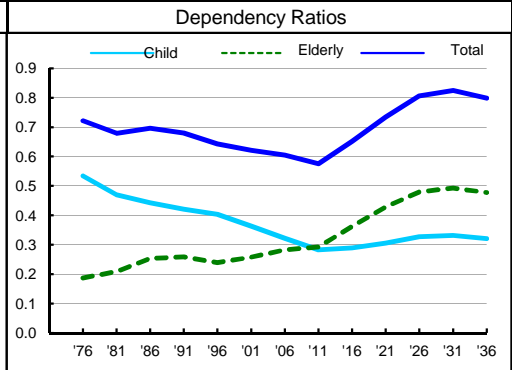
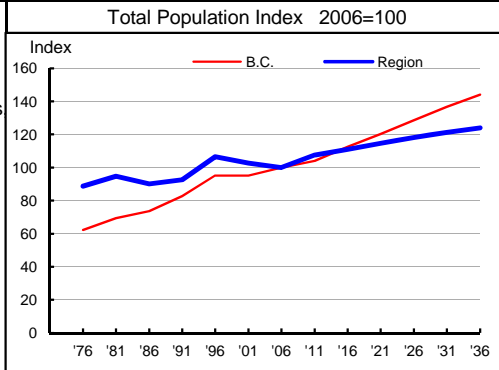
15 Selected Demographic Characteristics

Year	Population by age group, Thousands of persons							Households (,000)	Dependency Ratios			Year
	0-4	5-17	18-24	25-44	45-64	65+	All Ages		Child	Elderly	Total	
1976	3.6	12.0	6.1	12.5	10.6	5.5	50.2	16.8	0.534	0.187	0.721	1976
1981	3.8	11.2	6.0	15.3	10.5	6.7	53.5	19.6	0.470	0.209	0.679	1981
1986	3.6	9.7	4.5	14.9	10.6	7.6	50.9	20.1	0.443	0.253	0.696	1986
1991	3.4	9.7	4.3	15.6	11.3	8.0	52.3	20.7	0.421	0.258	0.679	1991
1996	3.4	11.4	4.9	17.3	14.4	8.8	60.2	24.2	0.403	0.239	0.643	1996
2001	2.9	10.1	4.5	15.0	16.2	9.2	58.0	24.6	0.363	0.258	0.621	2001
2006	2.5	8.8	3.9	13.0	18.4	10.0	56.5	24.9	0.322	0.283	0.605	2006
2011	2.7	8.2	5.8	13.4	19.3	11.3	60.7	27.4	0.282	0.293	0.575	2011
2016	3.1	7.9	4.8	14.6	18.6	13.7	62.7	28.9	0.289	0.362	0.651	2016
2021	3.2	8.2	4.4	15.5	17.4	16.0	64.7	30.1	0.306	0.428	0.734	2021
2026	3.2	8.9	4.4	16.1	16.4	17.7	66.8	30.9	0.328	0.479	0.807	2026
2031	3.1	9.4	4.6	16.5	16.4	18.5	68.5	31.5	0.332	0.493	0.825	2031
2036	3.1	9.4	5.1	15.7	18.0	18.6	70.0	32.2	0.321	0.477	0.798	2036

Age groups reflect pre-school, school, advanced education, family formation, mature workers and retired.

Child Dependency:
 (ages 0-17) / (ages 18-64)

Elderly Dependency:
 (ages 65+) / (ages 18-64)



Source: Population data are Projection P-36, run in Summer 2011. Figures are adjusted for Census undercount and are for July 1st of stated year.
 Note: Demographics and Projection notes in Tables 13 and 14 are from Projection P-33, run the Summer 2008.