



**Kootenay-Boundary
Regional District**

1	General Economy
<p>Municipalities in Regional District: Fruitvale, Grand Forks, Greenwood, Midway, Montrose, Rossland, Trail, Warfield</p> <p>This region is home to the Trail Lead-Zinc Smelter and Refinery Operations of Teck Cominco. Several small construction aggregate mines are also in the area. This area has several lumber mills. In Grand Forks several power projects are proposed. Livestock and cattle raising, along with haymaking and fruit tree farming, make up the agricultural activities in this area.</p>	

The notes above and later in this report on Demographics and Projections are the basis for BC Stats population projection P33 completed in the Summer of 2008. The projections are updated annually to reflect known demographic shifts and economic conditions. Full projections with "Components of Change", "Special Age Groups", "5 Year Age Cohorts by Sex", and accompanying notes are available for B.C., the 8 development regions, the 28 regional districts, the 79 local health areas (LHAs) and a number of "special areas" of local interest which are not part of a province-wide geocoding system. Individual areas, including age and sex detail, are modestly priced. Users requiring only total population projections are able to self serve for free from our population projection page: www.bcstats.gov.bc.ca/data/pop/pop/popproj.asp The full B.C. level projection is available free on the above page.

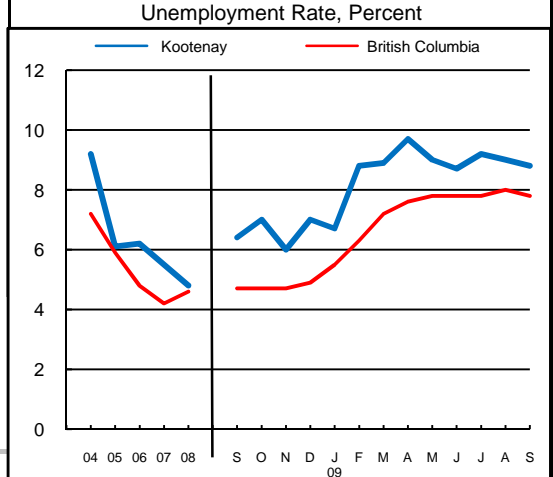
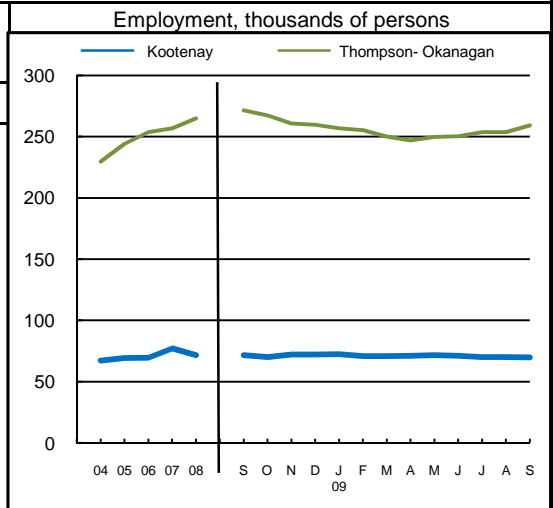
2		Economic Structure - Number of Business Locations, by Sector, by Employment Size, December 2008								
NAICS Code	Industry Sector based on NAICS Canada (North American Industrial Classification System)	Kootenay-Boundary							British Columbia	
		Locations With No Employees	Firms with Employees						With Employees	
			Less Than 20	20 to 49	50 to 199	200 Plus	All Sizes with Emp.	Percent of Total	Percent of Total	All Sizes
	Total, All Industries	1,030	968	83	33	8	1,092	100.0%	100.0%	175,003
11	Agric., Forestry, Fishing & Hunt	69	53	5	2	0	60	5.5%	4.0%	7,009
21	Mining & Oil & Gas Extract.	9	7	0	0	0	7	0.6%	0.6%	1,071
22	Utilities	2	6	1	1	0	8	0.7%	0.1%	203
23	Construction	135	119	11	3	0	133	12.2%	12.1%	21,108
31	Manufacturing (31-33)	32	37	3	2	1	43	3.9%	4.5%	7,879
41	Wholesale Trade	23	23	4	0	0	27	2.5%	5.9%	10,359
44	Retail Trade (44-45)	89	136	15	4	2	157	14.4%	11.9%	20,742
48	Transp. & Warehousing (48-49)	36	43	2	0	0	45	4.1%	4.4%	7,734
51	Information & Cultural Indust.	7	11	2	1	0	14	1.3%	1.4%	2,412
52	Finance & Insurance	39	28	6	2	0	36	3.3%	3.8%	6,564
53	Real Estate & Rental & Leasing	213	47	0	0	0	47	4.3%	4.5%	7,835
54	Profes'nl, Scientif. & Tech. Srv	111	68	1	1	0	70	6.4%	11.0%	19,278
55	Mgmt. of Companies & Enter.	46	8	1	0	0	9	0.8%	1.6%	2,818
56	Admin. & Sup'rt, Waste Mgmt.	36	37	1	2	0	40	3.7%	4.9%	8,513
61	Educational Services	7	5	0	0	3	8	0.7%	1.4%	2,363
62	Health Care & Social Assistance	14	102	4	9	1	116	10.6%	8.4%	14,773
71	Arts, Entertainment & Recreation	14	29	5	1	0	35	3.2%	1.6%	2,873
72	Accom. & Food Services	83	92	13	3	1	109	10.0%	6.7%	11,639
81	Other Serv's (ex. Public Admin.)	64	109	7	0	0	116	10.6%	10.9%	19,095
91	Public Administration	1	8	2	2	0	12	1.1%	0.4%	735

Source: Statistics Canada, Business Register Division. Note: This table formerly identified **business establishments**.



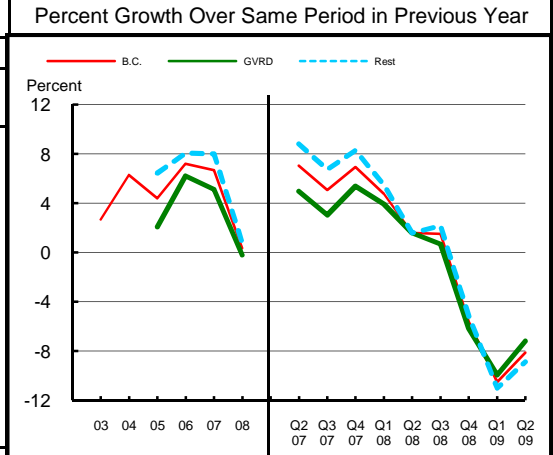
**Kootenay-Boundary
Regional District**

3 Employment and Unemployment Rate, monthly data are 3-month moving average, actual, ending in stated month							
	Kootenay		Thompson-Okanagan		British Columbia		
	Emp. ('000)	Unemp. %	Emp. ('000)	Unemp. %	Emp. ('000)	Unemp. %	
1999	69.4	9.3	206.1	9.6	1,894.4	8.3	
2000	70.8	10.0	210.3	9.3	1,931.3	7.1	
2001	70.4	9.7	210.2	9.3	1,921.6	7.7	
2002	66.6	10.0	208.1	9.4	1,965.0	8.5	
2003	67.4	11.5	218.8	8.8	2,014.7	8.0	
2004	67.1	9.2	229.7	6.6	2,062.7	7.2	
2005	69.2	6.1	244.0	5.3	2,130.5	5.9	
2006	69.5	6.2	253.7	5.1	2,195.5	4.8	
2007	77.1	5.5	256.7	4.4	2,266.3	4.2	
2008	71.5	4.8	265.0	5.5	2,314.3	4.6	
2008 Jan	73.1	4.8	253.9	4.8	2,286.5	4.1	
2008 Feb	71.8	4.4	253.6	5.3	2,278.9	4.2	
2008 Mar	71.2	3.4	257.6	5.9	2,284.9	4.4	
2008 Apr	71.6	2.5	260.7	5.6	2,295.0	4.4	
2008 May	72.1	2.2	265.6	5.6	2,313.3	4.5	
2008 Jun	71.3	2.5	271.5	5.1	2,329.8	4.4	
2008 Jul	71.2	3.9	274.8	5.2	2,345.0	4.5	
2008 Aug	70.5	5.1	275.2	4.9	2,350.7	4.6	
2008 Sep	71.6	6.4	271.4	4.9	2,337.7	4.7	
2008 Oct	70.1	7.0	267.3	5.4	2,325.3	4.7	
2008 Nov	72.1	6.0	260.7	5.8	2,312.5	4.7	
2008 Dec	72.0	7.0	259.7	6.2	2,304.8	4.9	
2009 Jan	72.4	6.7	256.9	7.0	2,278.4	5.5	
2009 Feb	70.8	8.8	255.3	7.8	2,251.1	6.3	
2009 Mar	70.7	8.9	249.9	9.1	2,227.5	7.2	
2009 Apr	71.1	9.7	246.8	9.7	2,229.0	7.6	
2009 May	71.5	9.0	249.8	9.9	2,243.1	7.8	
2009 Jun	71.1	8.7	250.2	9.8	2,264.6	7.8	
2009 Jul	69.9	9.2	253.6	9.5	2,275.9	7.8	
2009 Aug	69.9	9.0	253.7	9.6	2,280.5	8.0	
2009 Sep	69.7	8.8	259.2	8.5	2,275.8	7.8	
2009 Oct							
2009 Nov							
2009 Dec							
Average:							
ytd average	Jan-Sep08	71.3	3.8	266.8	5.3	2,317.5	4.5
based on	Jan-Sep09	70.5	8.8	253.4	9.1	2,256.0	7.6
actual data	% Change	-1.2		-5.0		-2.7	



Source: Labour Force Survey, Statistics Canada. Sub-provincial regions are development regions or census metropolitan areas.

4 Retail Sales - based on Statistics Canada monthly survey							Percent Growth Over Same Period in Previous Year						
Year or Year/Quarter	\$ millions of retail sales			Percent change on year ago			B.C.	Greater Vancouver	Rest of Province	B.C.	Greater Vancouver	Rest of Province	
	B.C.	Greater Vancouver	Rest of Province	B.C.	Greater Vancouver	Rest of Province							
2004	47,216.6	22,243.6	24,973.0	6.3	n/a	n/a							
2005	49,286.3	22,702.6	26,583.7	4.4	2.1	6.4							
Annual data 2006	52,837.1	24,110.2	28,726.9	7.2	6.2	8.1							
2007	56,365.4	25,342.8	31,022.6	6.7	5.1	8.0							
2008	56,562.4	25,290.5	31,271.8	0.3	-0.2	0.8							
Quarterly data 08 2	14,749.1	6,626.3	8,122.8	1.6	1.6	1.6							
08 3	14,923.3	6,466.4	8,456.9	1.5	0.7	2.2							
08 4	14,053.2	6,340.4	7,712.7	-5.6	-6.2	-5.2							
09 1	11,485.1	5,274.5	6,210.5	-10.5	-10.0	-11.0							
09 2	13,550.1	6,150.0	7,400.1	-8.1	-7.2	-8.9							



Source: B.C. & GVRD data - Statistics Canada, monthly survey (CANSIM 080-0015).



**Kootenay-Boundary
Regional District**

Was 5 **Manufacturing Principal Statistics - Search at www.made-in-bc.ca for local firms, products and more**

This table is discontinued. Sub-provincial manufacturing principal statistics are no longer being produced.

5		Tourism Room Revenue (\$ Thousands)					Tourism Room Revenue Index 2003=100	
Year	Total/YTD	Q1	Q2	Q3	Q4	Index		
Kootenay-B'ndary Regional District	2005	16,103.8	8,827.2	1,523.9	2,597.1	3,155.7		
	2006	16,249.2	8,115.9	1,883.8	2,981.0	3,268.5		
	2007	19,134.1	9,579.1	2,087.0	3,490.6	3,977.3		
	2008	19,059.2	9,886.8	2,119.1	3,431.4	3,622.0		
	2009	9,887.5	7,913.0	1,974.6				
British Columbia	2005	1,681,563.6	351,779.6	404,639.8	610,273.7	314,870.6		
	2006	1,807,608.7	366,165.1	450,747.7	652,476.4	338,219.5		
	2007	1,963,958.7	412,949.3	488,493.9	697,545.2	364,970.3		
	2008	1,977,424.9	435,223.9	503,276.7	687,708.3	351,215.9		
	2009	802,329.6	378,880.1	423,449.6				
2008 Room Revenue by Accommodation Type (\$Thousands %Share)								
TOTAL	19,059.0	100.0%						
Motels	4,036.0	21.2%						

asterisk before location denotes sub-area detail

Source: Hotel tax database maintained by Consumer Taxation Branch, Ministry of Small Business and Revenue
Published in detail monthly by BC Stats.

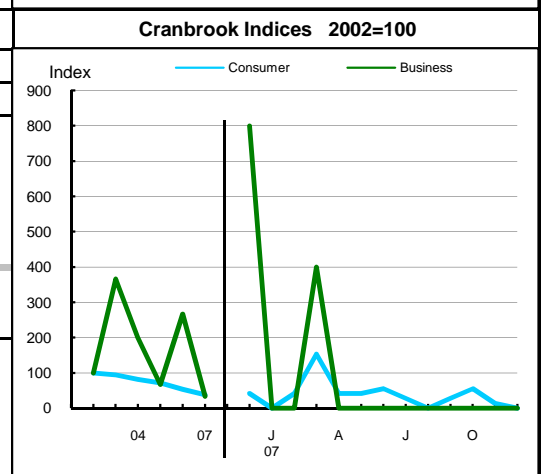
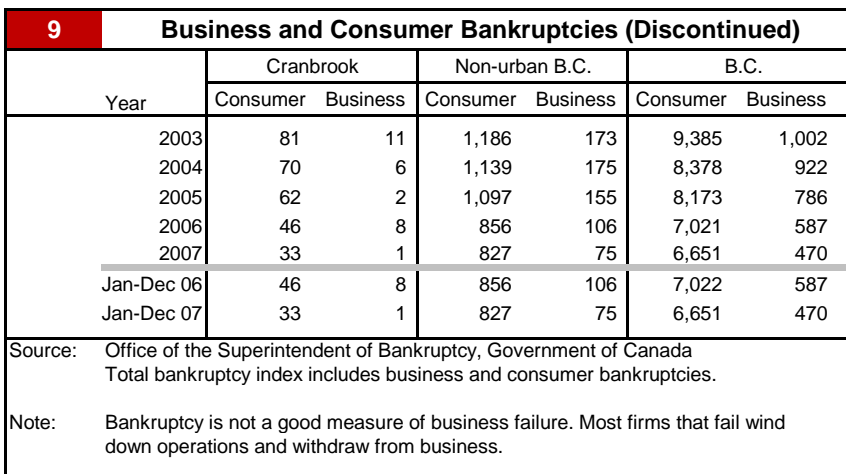
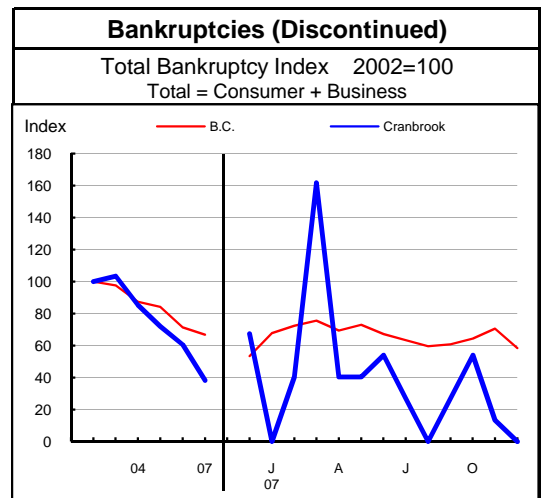
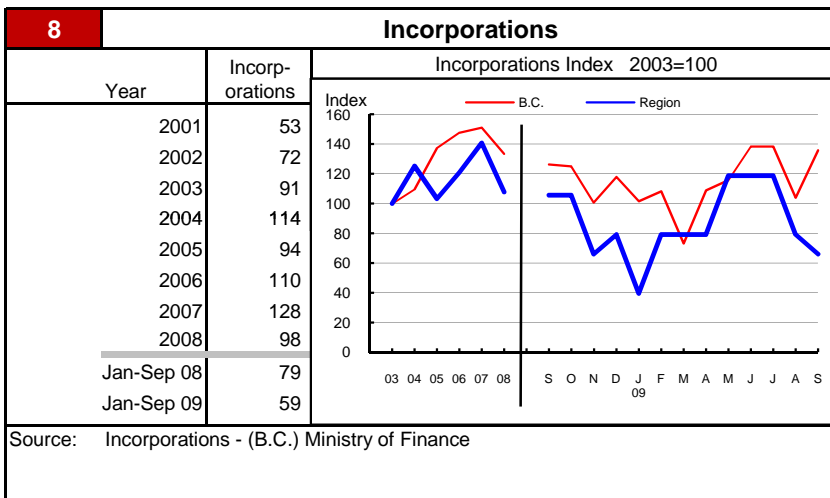
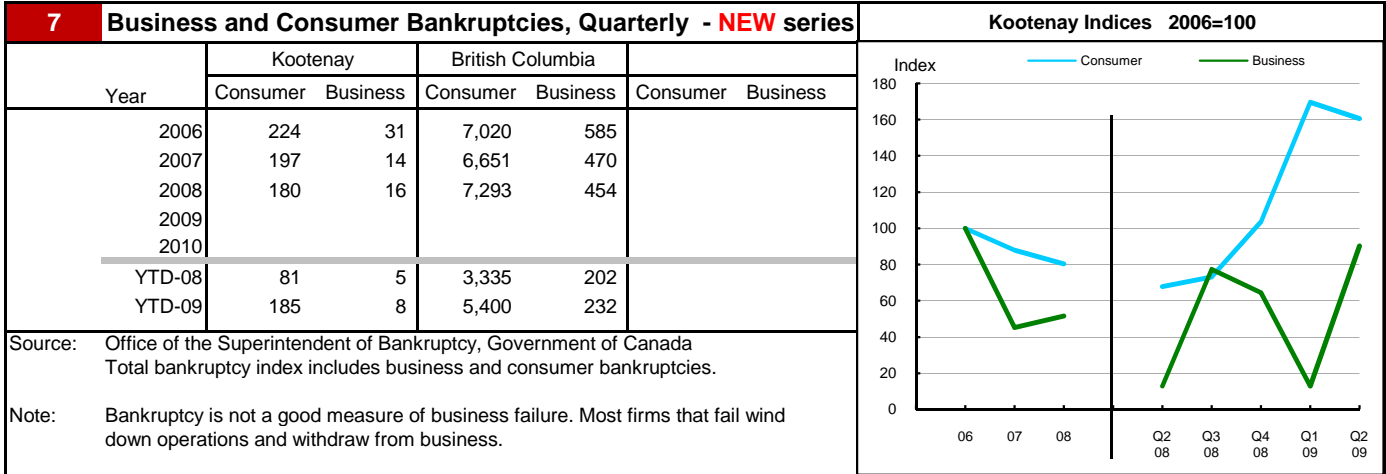
All room revenue data has been revised. For an explanation, see our periodical called *Tourism Sector Monitor*, April and May issues of 2009.
Link to explanation of changes: http://www.bcstats.gov.bc.ca/pubs/pr_tour.asp

6		Building Permits						Total Permits Index 2003=100	
Year	Total Building Permits	Non Residential				Residential		Index	
		Total Non Res.	Industrial	Commercial	Institutional & Gov't	Units	Units		
		<-- \$ Millions -->							
2001	45.3	18.4	3.9	4.1	10.5	26.8	182		
2002	40.1	7.7	2.4	3.4	1.9	32.4	151		
2003	83.6	17.2	2.8	5.8	8.7	66.3	352		
2004	71.7	14.8	0.6	10.8	3.5	56.8	290		
2005	66.9	11.5	3.3	5.0	3.1	55.5	257		
2006	82.2	19.4	3.0	2.8	13.6	62.8	293		
2007	108.8	44.0	6.4	1.1	36.5	64.9	231		
2008	72.0	9.5	2.5	4.7	2.3	62.5	262		
Jan-Aug 08	54.7	6.1	1.2	2.9	1.9	48.7	207		
Jan-Aug 09	29.2	4.5	2.4	1.8	0.3	24.7	76		

Not all projects require a building permit, and not all municipalities & regions report. Latest month preliminary, previous month is revised.
Source: Statistics Canada (data collected from municipal and Regional District offices).



**Kootenay-Boundary
Regional District**





**Kootenay-Boundary
Regional District**

Dependence on the Safety Net

10 Basic Income Assistance (Basic Income Assistance Recipients in Subject Group as a percent of Reference Group)							11 Employment Insurance (was UI) (EI beneficiaries as a percent of Reference Group)									
Subject Group (receiving benefits)		All (0-64)	Children <19 yrs in Families	Young Adults (19-24)	'Mid' Group (25-54)	Single Parent Women	Working Age (19-64)	Young Adults (19-24)	'Mid' Group (25-54)	'Older' Workers (55-64)	Note Older Data					
Reference Group		Total Pop. 0-64	Total Pop. <19	Total Pop. 19-24	Total Pop. 25-54	Tot. Female 19-64	Total Pop. 19-64	Total Pop. 19-24	Total Pop. 25-54	Total Pop. 55-64						
Kootenay-B'ndary Regional District	Sep '07	1.5	2.6	1.7	1.4	0.8	2.3	3.3	2.6	1.2	Mar '07					
	Dec '07	1.6	2.6	2.1	1.5	0.8	1.5	1.1	1.8	1.0	Jun '07					
	Mar '08	1.6	2.7	1.3	1.6	0.9	1.7	1.3	1.8	1.4	Sep '07					
	Jun '08	1.8	3.1	1.7	1.6	0.9	3.4	4.1	3.8	2.1	Dec '07					
	Sep '08	1.7	2.9	1.8	1.6	0.8	3.6	4.1	4.2	2.2	Mar '08					
	Dec '08	2.0	3.3	2.0	2.0	1.0	5.0	3.4	5.7	3.9	Jun '08					
	Mar '09	2.4	3.5	2.6	2.4	1.1	1.8	1.4	2.1	1.3	Sep '08					
	Jun '09	2.3	3.4	2.4	2.3	1.0	3.4	4.9	3.7	2.0	Dec '08					
	Sep '09	2.3	2.9	2.7	2.4	0.9	5.6	7.4	6.5	2.9	Mar '09					
Duration of Dependence on Income Assistance (As of September 2009)		All* Income Assistance Recipients as % of Total Pop 0-64: Region Compared to B.C.					EI Beneficiaries Aged 19-64 as % of Working Age Population									
Region		Percent					Percent									
B.C.		Region					B.C.					Region				
Total Number of Recipients	574	72,592														
Percent Distribution by Duration																
<1 Year	71.4	65.3														
1-2 Years	16.2	18.2														
>2 Years	12.4	16.4														
Source: Ministry of Children and Family Development administrative files and BC Stats population estimates. These figures include only a subset of those receiving income assistance. Excluded are those on Continuous Assistance (disabled or with persistent multiple barriers to employment, children in the home of a relative, and OAS/seniors. A recipient is defined as 'each person living in a family or living alone that is receiving basic income assistance'. Data does not include Aboriginal people living on Reserve. Note: '-' Data too small to release.							Source: Ministry of Housing and Social Development and BC Stats population estimates.									
12 Dependence on Basic Income Assistance and/or Employment Insurance (Basic Income Assistance Recipients + Employment Insurance Recipients in Subject Group as a percent of Reference Group)																
Subject Group (receiving assistance)		All (19-64)	Young Adults (19-24)	'Mid' Group (25-54)	'Older' Group (55-64)	All 'Safety Net' Recipients as % of Total Pop 19-64: Region Compared to B.C.										
Reference Group		Total Pop. 19-64	Total Pop. 19-24	Total Pop. 25-54	Total Pop. 55-64	Percent										
Kootenay-B'ndary Regional District	Mar '07	3.5	4.7	4.0	1.7											
	Jun '07	2.7	2.6	3.2	1.4											
	Sep '07	2.7	2.9	3.1	1.7											
	Dec '07	4.6	5.9	5.3	2.5											
	Mar '08	4.9	5.4	5.8	2.8											
	Jun '08	6.3	5.0	7.3	4.5											
	Sep '08	3.1	3.1	3.6	1.8											
	Dec '08	4.9	6.8	5.6	2.6											
Mar '09	7.6	9.9	8.8	3.7												

Note: The EI figures reported above no longer include persons claiming parental/adoption leave. Previous issues of this table did include them.



**Kootenay-Boundary
Regional District**

13 Demographics

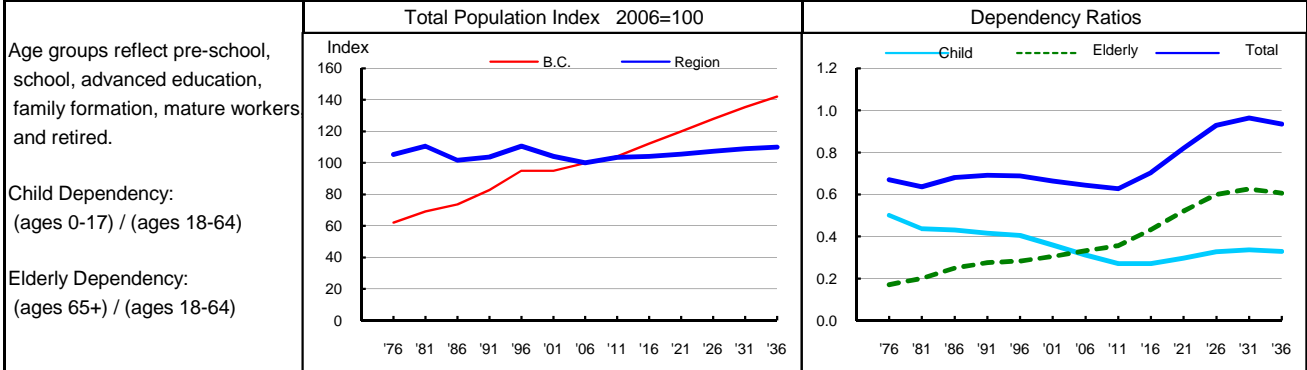
Apart from a period in the early 1990s and in the last few years, Kootenay-Boundary has seen negative growth rates. As a result, the population of this region has grown minimally. However, the structure of the population has changed dramatically over that time period. The population has aged quite rapidly, adding almost 12 years to its median age, compared to a provincial gain of 7.2 years. Total fertility rates have been on the decline, and have dipped below provincial rates in 2001 before returning to higher levels in 2006 and 2007. With declining fertility and an ageing population, the ratio of children to working ages (under 17 to ages 18 to 64) has dropped dramatically, and is now similar to provincial ratios. The ratio of elderly (aged 65 and over) to working age population (aged 18 to 64) has been on the rise, and is much higher than the corresponding provincial ratio. This age structure was likely influenced by lay-offs in the resource sectors that have forced young workers with less seniority to move elsewhere to find jobs. Those left behind are generally older and more likely to have families. Natural increase has been negative since the mid 1990s, as deaths outnumber births by an increasing margin. In combination with net migration out-flows, negative natural increase has resulted in a net loss of population in the area since the mid 1990's.

14 Projection

Interprovincial migration to this region is forecast to remain positive throughout the projection period. This region is expected to receive increasing net in-flows of migrants over in the long-term. However, deaths will continue to outnumber births by an increasing margin, leading to a slowing of growth rates. Towards the end of the projection period the losses due to a negative natural increase should overtake net migration, resulting in a negative population growth rate. The population in 2036 is projected to be almost the same size as in 2007. However, the population will continue to age and, by the end of the projection, it is expected that there will be over 9 dependents for every 10 people of working age. Most of these dependents will likely be those aged 65 and older.

15 Selected Demographic Characteristics

Year	Population by age group, Thousands of persons							House-holds (,000)	Dependency Ratios			Year
	0-4	5-17	18-24	25-44	45-64	65+	All Ages		Child	Elderly	Total	
1976	2.2	7.5	4.2	7.8	7.5	3.3	32.5	10.9	0.501	0.170	0.671	1976
1981	2.3	6.8	4.4	9.3	7.2	4.2	34.1	12.4	0.436	0.200	0.637	1981
1986	2.2	5.8	2.8	9.0	6.8	4.7	31.3	12.2	0.431	0.250	0.681	1986
1991	2.0	5.9	2.5	9.7	6.7	5.2	32.0	12.7	0.416	0.275	0.691	1991
1996	1.8	6.4	2.4	9.7	8.1	5.7	34.1	13.9	0.406	0.282	0.688	1996
2001	1.3	5.6	2.3	7.9	9.1	5.9	32.1	13.7	0.359	0.304	0.663	2001
2006	1.2	4.6	2.1	6.2	10.4	6.2	30.8	13.4	0.312	0.332	0.644	2006
2011	1.3	4.0	2.7	6.0	10.8	7.0	31.9	14.3	0.271	0.356	0.628	2011
2016	1.4	3.7	2.4	6.4	10.0	8.1	32.1	14.7	0.271	0.433	0.704	2016
2021	1.5	3.8	2.0	6.9	9.0	9.3	32.5	15.1	0.297	0.521	0.819	2021
2026	1.5	4.1	1.9	7.3	7.9	10.3	33.1	15.4	0.328	0.600	0.928	2026
2031	1.4	4.3	2.0	7.5	7.6	10.7	33.6	15.6	0.337	0.626	0.964	2031
2036	1.4	4.4	2.2	7.1	8.2	10.6	33.9	15.8	0.329	0.606	0.935	2036



Source: Population data are Projection P-34, run in Summer 2009. Figures are adjusted for Census undercount and are for July 1st of stated year.
Note: Demographics and Projection notes in Tables 13 and 14 are from Projection P-33, run the Summer 2008.