



Okanagan-Similkameen
Regional District

1	General Economy
Municipalities in Regional District: Keremeos, Oliver, Osoyoos, Penticton, Princeton, Summerland	
<p>The Okanagan-Similkameen region includes a portion of the Interior plateau (west of the Cascade Mountains) and the southern portion of the Okanagan valley. The area is the most productive fruit and wine grape growing areas of the province. The area has intensive growing of fruit trees and wine grapes in the valleys and some cattle farming in the grassland areas. There are many orchards of apples, cherries, peaches, plums and other soft fruits along with vineyards and nurseries. The agricultural sector is also responsible for drawing large numbers of tourists to the area. The annual allowable cuts for the Timber supply areas located partially in this region have been increased recently to combat and facilitate salvage harvesting due to the Mountain Pine Beetle.</p>	

The notes above and later in this report on Demographics and Projections are the basis for BC Stats population projection P33 completed in the Summer of 2008. The projections are updated annually to reflect known demographic shifts and economic conditions. Full projections with "Components of Change", "Special Age Groups", "5 Year Age Cohorts by Sex", and accompanying notes are available for B.C., the 8 development regions, the 28 regional districts, the 79 local health areas (LHAs) and a number of "special areas" of local interest which are not part of a province-wide geocoding system. Individual areas, including age and sex detail, are modestly priced. Users requiring only total population projections are able to self serve for free from our population projection page: www.bcstats.gov.bc.ca/data/pop/pop/popproj.asp The full B.C. level projection is available free on the above page.

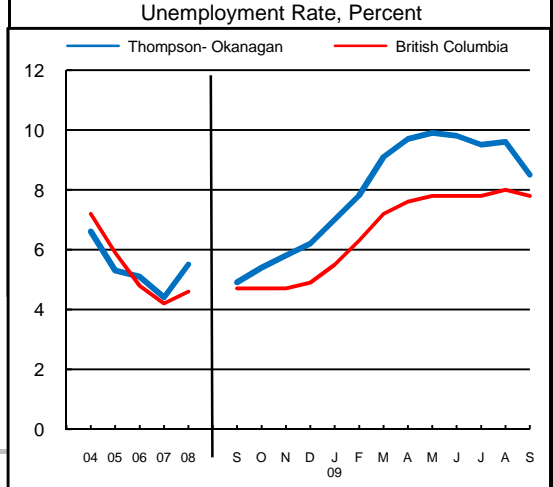
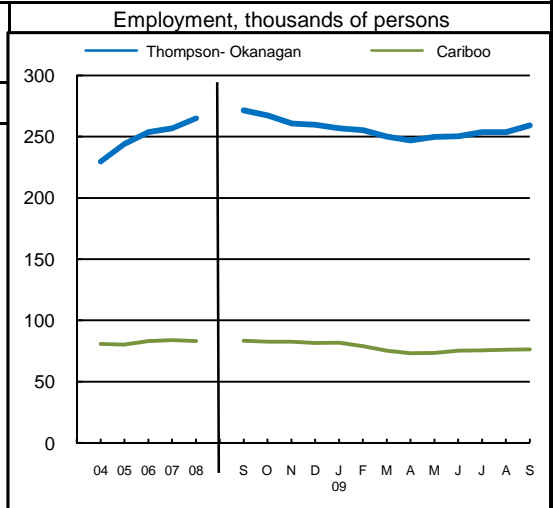
2	Economic Structure - Number of Business Locations, by Sector, by Employment Size, December 2008									
NAICS Code	Industry Sector based on NAICS Canada (North American Industrial Classification System)	Okanagan-Similkameen							British Columbia	
		Locations With No Employees	Firms with Employees						With Employees	
			Less Than 20	20 to 49	50 to 199	200 Plus	All Sizes with Emp.	Percent of Total	Percent of Total	All Sizes
11	Total, All Industries	2,983	3,137	243	108	12	3,500	100.0%	100.0%	175,003
	Agric., Forestry, Fishing & Hunt	302	414	20	7	0	441	12.6%	4.0%	7,009
21	Mining & Oil & Gas Extract.	12	5	4	0	0	9	0.3%	0.6%	1,071
22	Utilities	7	12	1	0	0	13	0.4%	0.1%	203
23	Construction	495	397	20	8	1	426	12.2%	12.1%	21,108
31	Manufacturing (31-33)	78	136	27	18	1	182	5.2%	4.5%	7,879
41	Wholesale Trade	86	108	13	5	0	126	3.6%	5.9%	10,359
44	Retail Trade (44-45)	219	404	41	13	2	460	13.1%	11.9%	20,742
48	Transp. & Warehousing (48-49)	107	125	2	0	0	127	3.6%	4.4%	7,734
51	Information & Cultural Indust.	22	37	1	0	0	38	1.1%	1.4%	2,412
52	Finance & Insurance	194	114	12	7	0	133	3.8%	3.8%	6,564
53	Real Estate & Rental & Leasing	494	147	4	0	0	151	4.3%	4.5%	7,835
54	Profes'nl, Scientif. & Tech. Srv	285	218	4	2	0	224	6.4%	11.0%	19,278
55	Mgmt. of Companies & Enter.	184	29	2	0	0	31	0.9%	1.6%	2,818
56	Admin. & Sup'rt, Waste Mgmt.	103	143	8	3	1	155	4.4%	4.9%	8,513
61	Educational Services	30	25	1	3	2	31	0.9%	1.4%	2,363
62	Health Care & Social Assistance	54	271	15	11	2	299	8.5%	8.4%	14,773
71	Arts, Entertainment & Recreation	42	51	8	4	1	64	1.8%	1.6%	2,873
72	Accom. & Food Services	110	201	52	20	1	274	7.8%	6.7%	11,639
81	Other Serv's (ex. Public Admin.)	159	290	4	2	0	296	8.5%	10.9%	19,095
91	Public Administration	-	10	4	5	1	20	0.6%	0.4%	735

Source: Statistics Canada, Business Register Division. Note: This table formerly identified **business establishments**.



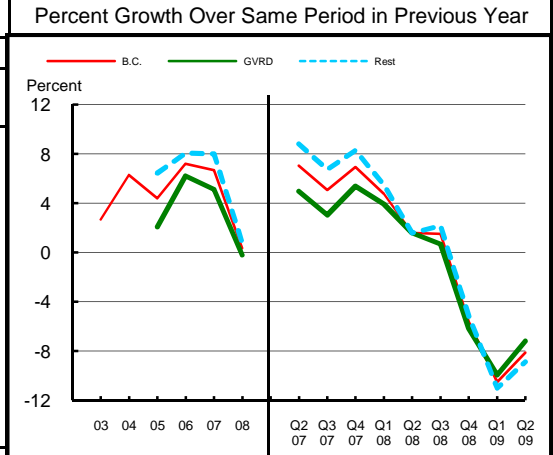
Okanagan-Similkameen Regional District

3 Employment and Unemployment Rate, monthly data are 3-month moving average, actual, ending in stated month							
	Thompson-Okanagan		Cariboo		British Columbia		
	Emp. ('000)	Unemp. %	Emp. ('000)	Unemp. %	Emp. ('000)	Unemp. %	
1999	206.1	9.6	81.4	11.6	1,894.4	8.3	
2000	210.3	9.3	79.1	9.9	1,931.3	7.1	
2001	210.2	9.3	79.4	9.7	1,921.6	7.7	
2002	208.1	9.4	78.0	12.7	1,965.0	8.5	
2003	218.8	8.8	78.2	11.1	2,014.7	8.0	
2004	229.7	6.6	80.7	9.1	2,062.7	7.2	
2005	244.0	5.3	80.1	7.4	2,130.5	5.9	
2006	253.7	5.1	82.9	6.1	2,195.5	4.8	
2007	256.7	4.4	83.8	5.1	2,266.3	4.2	
2008	265.0	5.5	83.1	6.5	2,314.3	4.6	
2008 Jan	253.9	4.8	88.0	5.2	2,286.5	4.1	
2008 Feb	253.6	5.3	86.5	5.8	2,278.9	4.2	
2008 Mar	257.6	5.9	84.0	6.8	2,284.9	4.4	
2008 Apr	260.7	5.6	82.9	7.7	2,295.0	4.4	
2008 May	265.6	5.6	82.7	7.9	2,313.3	4.5	
2008 Jun	271.5	5.1	83.5	7.0	2,329.8	4.4	
2008 Jul	274.8	5.2	83.4	6.9	2,345.0	4.5	
2008 Aug	275.2	4.9	83.2	7.2	2,350.7	4.6	
2008 Sep	271.4	4.9	83.3	6.8	2,337.7	4.7	
2008 Oct	267.3	5.4	82.5	6.4	2,325.3	4.7	
2008 Nov	260.7	5.8	82.4	5.5	2,312.5	4.7	
2008 Dec	259.7	6.2	81.4	5.6	2,304.8	4.9	
2009 Jan	256.9	7.0	81.7	6.1	2,278.4	5.5	
2009 Feb	255.3	7.8	78.8	7.8	2,251.1	6.3	
2009 Mar	249.9	9.1	75.3	10.0	2,227.5	7.2	
2009 Apr	246.8	9.7	73.2	12.0	2,229.0	7.6	
2009 May	249.8	9.9	73.4	12.9	2,243.1	7.8	
2009 Jun	250.2	9.8	75.2	13.5	2,264.6	7.8	
2009 Jul	253.6	9.5	75.6	14.2	2,275.9	7.8	
2009 Aug	253.7	9.6	76.1	13.3	2,280.5	8.0	
2009 Sep	259.2	8.5	76.2	12.4	2,275.8	7.8	
2009 Oct							
2009 Nov							
2009 Dec							
Average: ytd average based on actual data	Jan-Sep08	266.8	5.3	83.6	6.9	2,317.5	4.5
	Jan-Sep09	253.4	9.1	75.5	12.0	2,256.0	7.6
	% Change	-5.0		-9.7		-2.7	



Source: Labour Force Survey, Statistics Canada. Sub-provincial regions are development regions or census metropolitan areas.

4 Retail Sales - based on Statistics Canada monthly survey							Percent Growth Over Same Period in Previous Year						
Year or Year/Quarter	\$ millions of retail sales			Percent change on year ago			B.C.	Greater Vancouver	Rest of Province	B.C.	Greater Vancouver	Rest of Province	
	B.C.	Greater Vancouver	Rest of Province	B.C.	Greater Vancouver	Rest of Province							
2004	47,216.6	22,243.6	24,973.0	6.3	n/a	n/a							
2005	49,286.3	22,702.6	26,583.7	4.4	2.1	6.4							
Annual data 2006	52,837.1	24,110.2	28,726.9	7.2	6.2	8.1							
2007	56,365.4	25,342.8	31,022.6	6.7	5.1	8.0							
2008	56,562.4	25,290.5	31,271.8	0.3	-0.2	0.8							
Quarterly data 08 2	14,749.1	6,626.3	8,122.8	1.6	1.6	1.6							
08 3	14,923.3	6,466.4	8,456.9	1.5	0.7	2.2							
08 4	14,053.2	6,340.4	7,712.7	-5.6	-6.2	-5.2							
09 1	11,485.1	5,274.5	6,210.5	-10.5	-10.0	-11.0							
09 2	13,550.1	6,150.0	7,400.1	-8.1	-7.2	-8.9							



Source: B.C. & GVRD data - Statistics Canada, monthly survey (CANSIM 080-0015).



Okanagan-Similkameen
Regional District

Was 5 **Manufacturing Principal Statistics - Search at www.made-in-bc.ca for local firms, products and more**

This table is discontinued. Sub-provincial manufacturing principal statistics are no longer being produced.

5		Tourism Room Revenue (\$ Thousands)					Tourism Room Revenue Index 2003=100	
Okanagan-Sim'een Regional District	Year	Total/YTD	Q1	Q2	Q3	Q4	Index	
		2005	43,308.1	4,417.9	9,200.7	24,611.0	5,078.5	
	2006	48,593.0	5,373.0	10,270.5	27,064.9	5,884.5		
	2007	54,954.7	5,698.0	12,616.7	30,574.8	6,065.3		
	2008	57,413.2	5,713.3	12,896.5	32,257.5	6,546.0		
	2009	17,222.3	5,100.4	12,121.9				
British Columbia	2005	1,681,563.6	351,779.6	404,639.8	610,273.7	314,870.6		
	2006	1,807,608.7	366,165.1	450,747.7	652,476.4	338,219.5		
	2007	1,963,958.7	412,949.3	488,493.9	697,545.2	364,970.3		
	2008	1,977,424.9	435,223.9	503,276.7	687,708.3	351,215.9		
	2009	802,329.6	378,880.1	423,449.6				
2008 Room Revenue by Accommodation Type (\$Thousands %Share)								
TOTAL	57,413.0	100.0%						
Hotels	22,308.0	38.9%						
Motels	21,350.0	37.2%						
Vacation Rentals	4,792.0	8.3%						
*City of Penticton	28,045.0	48.8%						
*Town of Osoyoos	12,892.0	22.5%						
*Oliver/Okanagan Falls	3,366.0	5.9%						

asterisk before location denotes sub-area detail

Source: Hotel tax database maintained by Consumer Taxation Branch, Ministry of Small Business and Revenue
Published in detail monthly by BC Stats.

All room revenue data has been revised. For an explanation, see our periodical called *Tourism Sector Monitor*, April and May issues of 2009.
Link to explanation of changes: http://www.bcstats.gov.bc.ca/pubs/pr_tour.asp

6		Building Permits						Total Permits Index 2003=100	
Year	Total Building Permits	Non Residential				Residential		Index	
		Total Non Res.	Industrial	Commercial	Institutional & Gov't	Units			
		<-- \$ Millions -->							
2001	67.1	35.1	2.5	17.3	15.3	32.0	229		
2002	83.7	23.4	3.7	13.0	6.7	60.3	453		
2003	102.8	29.2	3.2	13.2	12.9	73.6	519		
2004	127.7	52.2	2.9	34.0	15.2	75.5	472		
2005	174.0	39.4	5.5	29.6	4.3	134.6	904		
2006	265.2	65.5	11.6	28.4	25.5	199.7	971		
2007	256.5	136.1	8.3	97.4	30.4	120.4	517		
2008	245.0	44.9	9.4	18.0	17.5	200.2	819		
Jan-Aug 08	186.5	32.4	6.6	10.1	15.7	154.1	649		
Jan-Aug 09	60.6	16.2	5.5	7.1	3.6	44.4	139		

Not all projects require a building permit, and not all municipalities & regions report. Latest month preliminary, previous month is revised.
Source: Statistics Canada (data collected from municipal and Regional District offices).

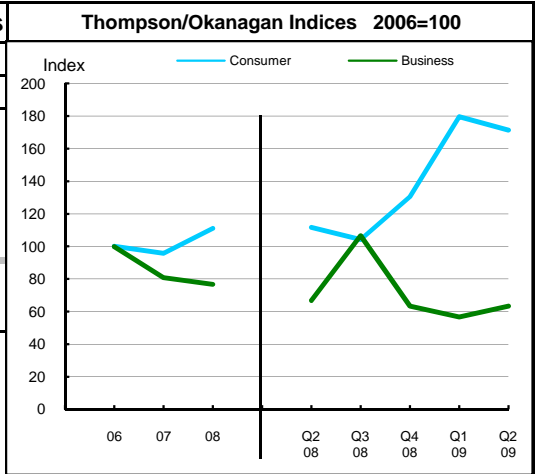


Okanagan-Similkameen
Regional District

7 Business and Consumer Bankruptcies, Quarterly - NEW series						
Year	Thompson/Okanagan		Kelowna		British Columbia	
	Consumer	Business	Consumer	Business	Consumer	Business
2006	913	120	378	41	7,020	585
2007	874	97	378	32	6,651	470
2008	1,014	92	426	31	7,293	454
2009						
2010						
YTD-08	478	41	203	14	3,335	202
YTD-09	801	36	331	13	5,400	232

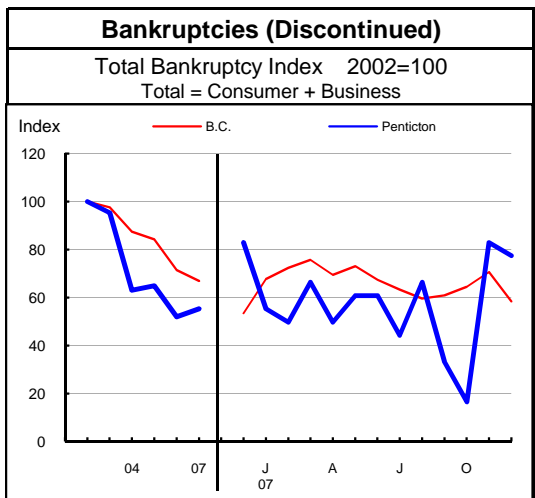
Source: Office of the Superintendent of Bankruptcy, Government of Canada
Total bankruptcy index includes business and consumer bankruptcies.

Note: Bankruptcy is not a good measure of business failure. Most firms that fail wind down operations and withdraw from business.



8 Incorporations			
Year	Incorporations	Incorporations Index 2003=100	
		Index 250	Index
2001	161		
2002	194		
2003	218		
2004	271		
2005	328		
2006	387		
2007	422		
2008	363		
Jan-Sep 08	288		
Jan-Sep 09	215		

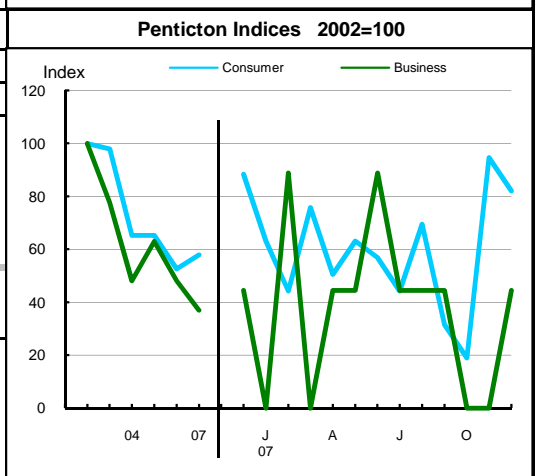
Source: Incorporations - (B.C.) Ministry of Finance



9 Business and Consumer Bankruptcies (Discontinued)						
Year	Penticon		Non-urban B.C.		B.C.	
	Consumer	Business	Consumer	Business	Consumer	Business
2003	186	21	1,186	173	9,385	1,002
2004	124	13	1,139	175	8,378	922
2005	124	17	1,097	155	8,173	786
2006	100	13	856	106	7,021	587
2007	110	10	827	75	6,651	470
Jan-Dec 06	100	13	856	106	7,022	587
Jan-Dec 07	110	10	827	75	6,651	470

Source: Office of the Superintendent of Bankruptcy, Government of Canada
Total bankruptcy index includes business and consumer bankruptcies.

Note: Bankruptcy is not a good measure of business failure. Most firms that fail wind down operations and withdraw from business.





Okanagan-Similkameen
Regional District

Dependence on the Safety Net

10 Basic Income Assistance (Basic Income Assistance Recipients in Subject Group as a percent of Reference Group)							11 Employment Insurance (was UI) (EI beneficiaries as a percent of Reference Group)				
Subject Group (receiving benefits)		All (0-64)	Children <19 yrs in Families	Young Adults (19-24)	'Mid' Group (25-54)	Single Parent Women	Working Age (19-64)	Young Adults (19-24)	'Mid' Group (25-54)	'Older' Workers (55-64)	Note Older Data
Reference Group		Total Pop. 0-64	Total Pop. <19	Total Pop. 19-24	Total Pop. 25-54	Tot. Female 19-64	Total Pop. 19-64	Total Pop. 19-24	Total Pop. 25-54	Total Pop. 55-64	
Okanagan-Sim'een Regional District	Sep '07	1.5	2.4	1.9	1.4	0.8	3.0	3.3	3.4	2.2	Mar '07
	Dec '07	1.6	2.6	2.0	1.6	0.8	1.6	1.7	1.8	1.0	Jun '07
	Mar '08	1.7	3.0	1.8	1.7	0.8	1.3	1.0	1.5	0.9	Sep '07
	Jun '08	1.6	2.7	1.8	1.6	0.9	3.3	3.2	3.6	2.7	Dec '07
	Sep '08	1.6	2.6	1.8	1.6	1.0	3.2	3.0	3.7	2.3	Mar '08
	Dec '08	1.9	3.0	2.0	2.0	0.9	3.5	3.3	4.0	2.6	Jun '08
	Mar '09	2.5	3.8	2.9	2.7	1.0	1.7	1.7	2.1	1.1	Sep '08
	Jun '09	2.5	3.7	3.1	2.6	1.0	4.8	4.5	5.4	3.6	Dec '08
	Sep '09	2.7	4.1	3.1	2.8	1.1	6.9	7.7	7.8	4.7	Mar '09
Duration of Dependence on Income Assistance (As of September 2009)		All* Income Assistance Recipients as % of Total Pop 0-64: Region Compared to B.C.					EI Beneficiaries Aged 19-64 as % of Working Age Population				
Region		Percent					Percent				
Total Number of Recipients	1,634	72,592					72,592				
Percent Distribution by Duration											
<1 Year	72.0	65.3					65.3				
1-2 Years	17.7	18.2					18.2				
>2 Years	10.3	16.4					16.4				
Source: Ministry of Children and Family Development administrative files and BC Stats population estimates. These figures include only a subset of those receiving income assistance. Excluded are those on Continuous Assistance (disabled or with persistent multiple barriers to employment, children in the home of a relative, and OAS/seniors. A recipient is defined as 'each person living in a family or living alone that is receiving basic income assistance'. Data does not include Aboriginal people living on Reserve. Note: '-' Data too small to release.							Source: Ministry of Housing and Social Development and BC Stats population estimates.				
12 Dependence on Basic Income Assistance and/or Employment Insurance (Basic Income Assistance Recipients + Employment Insurance Recipients in Subject Group as a percent of Reference Group)											
Subject Group (receiving assistance)		All (19-64)	Young Adults (19-24)	'Mid' Group (25-54)	'Older' Group (55-64)	All 'Safety Net' Recipients as % of Total Pop 19-64: Region Compared to B.C.					
Reference Group		Total Pop. 19-64	Total Pop. 19-24	Total Pop. 25-54	Total Pop. 55-64	Percent					
Okanagan-Sim'een Regional District	Mar '07	4.2	5.2	4.8	2.6	9.0					
	Jun '07	2.6	3.6	3.1	1.4	4.0					
	Sep '07	2.4	2.8	2.8	1.4	2.5					
	Dec '07	4.6	5.1	5.2	3.0	4.5					
	Mar '08	4.5	4.7	5.3	2.6	2.5					
	Jun '08	4.7	5.0	5.5	2.9	4.5					
	Sep '08	3.0	3.5	3.6	1.4	2.5					
	Dec '08	6.2	6.4	7.2	4.0	4.5					
Mar '09	8.9	10.4	10.3	5.3	9.0						

Note: The EI figures reported above no longer include persons claiming parental/adoption leave. Previous issues of this table did include them.



Okanagan-Similkameen
 Regional District

13 Demographics

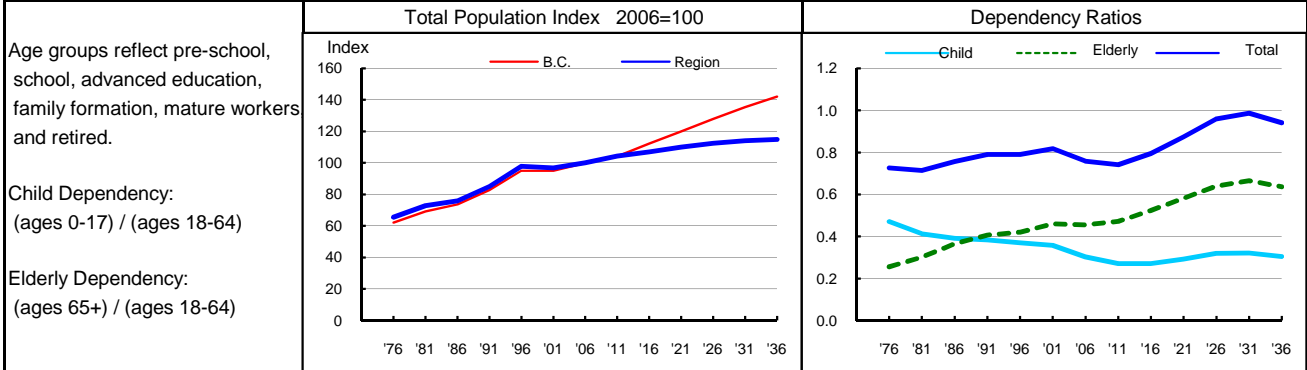
Like the rest of the Okanagan, this region experienced tremendous growth in the 1990's due to very high net migration inflows. The pleasant climate of this area makes it a popular place to retire, which contributes to a median age that is substantially higher than the provincial median age. The population has aged over time, adding over 9.5 years to its median age since the mid 1980s. By 2007, the population in this region was almost nine years older than British Columbia as a whole. The elderly dependency ratio (i.e., the ratio of those aged 65 and over to those aged 18 to 64) has been increasing and is now over twice that of the province as a whole. The older age structure is largely responsible for the strong sex ratio bias in favour of females, since women tend to live longer than men. Despite historically high fertility, the older age structure boosts the number of deaths, resulting in negative natural increase values since the late 1980s. Although its magnitude varied, net migration has been positive and is the sole driver behind population growth in this region. Relatively small net inflows led to minimal growth during the period from 1998 to 2004. However, higher migration levels in the last three years resulted in growth levels not seen in this region since the mid 1990s.

14 Projection

Natural increase will likely become even more negative over the projection period as deaths increase substantially. However, it is expected that net migration to this area will continue to be high, which will compensate somewhat for the increasing number of deaths. Nonetheless, growth will slow toward the end of the projection period. This region will likely grow by about 16 percent over the period. The population will continue to age and, by 2036, there will likely be about 9 dependents for every 10 people of working age and most of these dependents will be seniors.

15 Selected Demographic Characteristics

Year	Population by age group, Thousands of persons							Households (,000)	Dependency Ratios			Year
	0-4	5-17	18-24	25-44	45-64	65+	All Ages		Child	Elderly	Total	
1976	3.1	11.3	6.1	11.8	12.6	7.8	52.6	18.5	0.471	0.256	0.727	1976
1981	3.5	10.6	6.2	14.3	13.5	10.3	58.5	22.6	0.413	0.302	0.714	1981
1986	3.6	10.0	5.3	15.6	13.8	12.7	60.9	25.3	0.392	0.365	0.757	1986
1991	3.7	10.9	4.7	17.9	15.5	15.5	68.2	28.1	0.384	0.407	0.791	1991
1996	3.9	12.3	5.3	19.8	18.8	18.5	78.6	33.5	0.370	0.420	0.790	1996
2001	3.3	12.0	4.8	17.2	20.8	19.7	77.8	34.4	0.358	0.460	0.818	2001
2006	2.9	11.0	5.4	15.5	24.9	20.8	80.4	34.5	0.302	0.456	0.758	2006
2011	3.3	9.7	6.6	15.4	26.1	22.7	83.8	37.1	0.270	0.472	0.742	2011
2016	3.7	9.3	6.0	17.3	24.6	25.1	86.0	39.3	0.271	0.524	0.795	2016
2021	3.9	9.8	5.2	18.9	23.0	27.4	88.3	40.6	0.292	0.581	0.873	2021
2026	3.9	10.8	4.8	19.5	21.8	29.5	90.2	41.4	0.319	0.640	0.959	2026
2031	3.6	11.2	5.4	19.3	21.4	30.7	91.6	42.1	0.321	0.665	0.986	2031
2036	3.5	10.9	5.9	18.3	23.3	30.2	92.2	42.8	0.304	0.636	0.940	0



Source: Population data are Projection P-34, run in Summer 2009. Figures are adjusted for Census undercount and are for July 1st of stated year.
 Note: Demographics and Projection notes in Tables 13 and 14 are from Projection P-33, run the Summer 2008.