



**Fraser Valley  
Regional District**

<b>1</b>	<b>General Economy</b>
<p>Municipalities in Regional District: Chilliwack, Abbotsford, Harrison Hot Springs, Hope, Kent, Mission</p> <p>The main economic activities include agriculture, forestry and manufacturing. Farms in the valley provide food for the large population in the cities to the west. Producers and processors of dairy products, poultry and eggs, beef cattle, hogs and pigs, some field crops, vegetables, small fruits and berries, flower and miscellaneous speciality crops benefit from their close proximity to markets. The area has many wood manufacturing facilities. The annual allowable cut for the timber supply area in this region has remained constant for many years. With land priced lower than in the GVRD, this area has attracted industrial and warehousing operations. Manufacturing has been increasing and construction of residential units has continued to increase throughout the region.</p>	

The notes above and later in this report on Demographics and Projections are the basis for BC Stats population projection P33 completed in the Summer of 2008. The projections are updated annually to reflect known demographic shifts and economic conditions. Full projections with "Components of Change", "Special Age Groups", "5 Year Age Cohorts by Sex", and accompanying notes are available for B.C., the 8 development regions, the 28 regional districts, the 79 local health areas (LHAs) and a number of "special areas" of local interest which are not part of a province-wide geocoding system. Individual areas, including age and sex detail, are modestly priced. Users requiring only total population projections are able to self serve for free from our population projection page: [www.bcstats.gov.bc.ca/data/pop/pop/popproj.asp](http://www.bcstats.gov.bc.ca/data/pop/pop/popproj.asp) The full B.C. level projection is available free on the above page.

**2 Economic Structure - Number of Business Locations, by Sector, by Employment Size, December 2008**

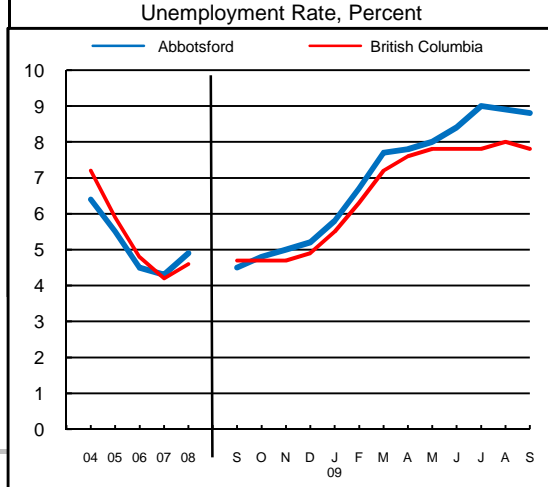
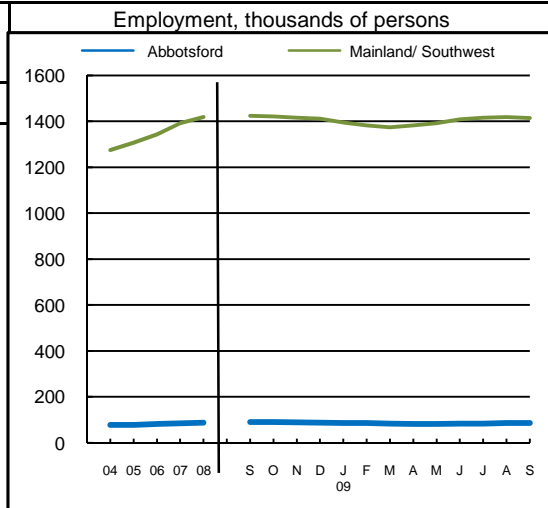
NAICS Code	Industry Sector based on NAICS Canada (North American Industrial Classification System)	Fraser Valley							British Columbia	
		Locations With No Employees	Firms with Employees						With Employees	
			Less Than 20	20 to 49	50 to 199	200 Plus	All Sizes with Emp.	Percent of Total	Percent of Total	All Sizes
	Total, All Industries	10,262	8,255	670	290	43	9,258	100.0%	100.0%	175,003
11	Agric., Forestry, Fishing & Hunt	912	991	52	29	1	1,073	11.6%	4.0%	7,009
21	Mining & Oil & Gas Extract.	20	15	4	0	0	19	0.2%	0.6%	1,071
22	Utilities	6	4	1	2	0	7	0.1%	0.1%	203
23	Construction	2,221	1,472	69	20	3	1,564	16.9%	12.1%	21,108
31	Manufacturing (31-33)	302	369	77	39	4	489	5.3%	4.5%	7,879
41	Wholesale Trade	340	357	38	11	0	406	4.4%	5.9%	10,359
44	Retail Trade (44-45)	538	889	97	42	6	1,034	11.2%	11.9%	20,742
48	Transp. & Warehousing (48-49)	1,170	473	27	13	2	515	5.6%	4.4%	7,734
51	Information & Cultural Indust.	73	38	8	2	1	49	0.5%	1.4%	2,412
52	Finance & Insurance	517	239	26	19	0	284	3.1%	3.8%	6,564
53	Real Estate & Rental & Leasing	1,272	314	13	2	1	330	3.6%	4.5%	7,835
54	Profes'nl, Scientif. & Tech. Srv	905	642	19	4	0	665	7.2%	11.0%	19,278
55	Mgmt. of Companies & Enter.	564	118	8	2	1	129	1.4%	1.6%	2,818
56	Admin. & Sup'rt, Waste Mgmt.	408	370	30	18	0	418	4.5%	4.9%	8,513
61	Educational Services	93	88	13	7	6	114	1.2%	1.4%	2,363
62	Health Care & Social Assistance	142	586	32	22	8	648	7.0%	8.4%	14,773
71	Arts, Entertainment & Recreation	107	87	12	5	0	104	1.1%	1.6%	2,873
72	Accom. & Food Services	169	368	95	43	3	509	5.5%	6.7%	11,639
81	Other Serv's (ex. Public Admin.)	501	816	33	8	2	859	9.3%	10.9%	19,095
91	Public Administration	2	19	16	2	5	42	0.5%	0.4%	735

Source: Statistics Canada, Business Register Division. Note: This table formerly identified **business establishments**.



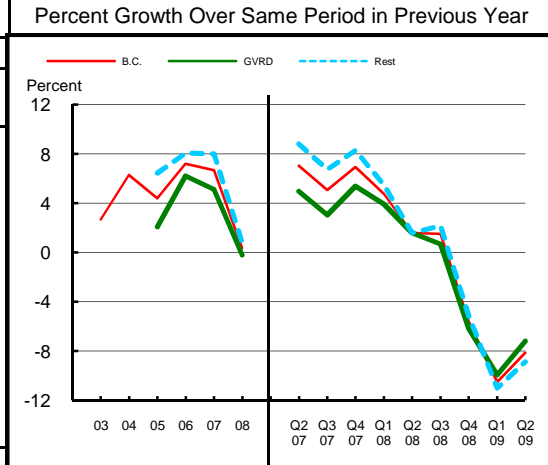
Fraser Valley  
Regional District

<b>3 Employment and Unemployment Rate, monthly data are 3-month moving average, actual, ending in stated month</b>							
	Abbotsford		Mainland/Southwest		British Columbia		
	Emp. ('000)	Unemp. %	Emp. ('000)	Unemp. %	Emp. ('000)	Unemp. %	
1999	66.9	7.6	1,130.1	7.7	1,894.4	8.3	
2000	68.3	7.5	1,164.6	6.1	1,931.3	7.1	
2001	71.4	6.7	1,175.0	6.7	1,921.6	7.7	
2002	75.2	7.5	1,216.7	7.7	1,965.0	8.5	
2003	74.9	7.5	1,251.4	7.3	2,014.7	8.0	
2004	78.5	6.4	1,275.3	6.7	2,062.7	7.2	
2005	78.3	5.5	1,307.3	5.7	2,130.5	5.9	
2006	82.3	4.5	1,342.7	4.4	2,195.5	4.8	
2007	84.8	4.3	1,392.2	4.0	2,266.3	4.2	
2008	88.0	4.9	1,418.3	4.2	2,314.3	4.6	
2008 Jan	84.9	3.6	1,417.7	3.6	2,286.5	4.1	
2008 Feb	83.8	4.9	1,411.1	3.7	2,278.9	4.2	
2008 Mar	84.4	5.6	1,412.7	3.7	2,284.9	4.4	
2008 Apr	85.8	5.4	1,412.8	3.9	2,295.0	4.4	
2008 May	88.0	4.8	1,421.3	4.1	2,313.3	4.5	
2008 Jun	88.7	4.2	1,425.2	4.2	2,329.8	4.4	
2008 Jul	89.2	4.1	1,430.2	4.4	2,345.0	4.5	
2008 Aug	90.8	4.1	1,433.3	4.4	2,350.7	4.6	
2008 Sep	90.7	4.5	1,423.7	4.5	2,337.7	4.7	
2008 Oct	90.5	4.8	1,420.3	4.4	2,325.3	4.7	
2008 Nov	88.8	5.0	1,414.9	4.3	2,312.5	4.7	
2008 Dec	88.2	5.2	1,411.6	4.5	2,304.8	4.9	
2009 Jan	87.2	5.8	1,395.0	5.1	2,278.4	5.5	
2009 Feb	86.3	6.7	1,381.8	5.9	2,251.1	6.3	
2009 Mar	84.0	7.7	1,374.3	6.6	2,227.5	7.2	
2009 Apr	82.9	7.8	1,382.4	6.9	2,229.0	7.6	
2009 May	82.3	8.0	1,392.2	7.2	2,243.1	7.8	
2009 Jun	83.3	8.4	1,409.1	7.3	2,264.6	7.8	
2009 Jul	84.1	9.0	1,415.7	7.4	2,275.9	7.8	
2009 Aug	85.9	8.9	1,418.6	7.6	2,280.5	8.0	
2009 Sep	87.2	8.8	1,413.6	7.4	2,275.8	7.8	
Average:							
ytd average	Jan-Sep08	87.9	4.8	1,420.6	4.2	2,317.5	4.5
based on	Jan-Sep09	84.8	8.3	1,397.7	7.1	2,256.0	7.6
actual data	% Change	-3.6		-1.6		-2.7	



Source: Labour Force Survey, Statistics Canada. Sub-provincial regions are development regions or census metropolitan areas.

<b>4 Retail Sales - based on Statistics Canada monthly survey</b>							Percent Growth Over Same Period in Previous Year		
Year or Year/Quarter	\$ millions of retail sales			Percent change on year ago			B.C.	Greater Vancouver	Rest of Province
	B.C.	Greater Vancouver	Rest of Province	B.C.	Greater Vancouver	Rest of Province			
2004	47,216.6	22,243.6	24,973.0	6.3	n/a	n/a			
2005	49,286.3	22,702.6	26,583.7	4.4	2.1	6.4			
Annual data 2006	52,837.1	24,110.2	28,726.9	7.2	6.2	8.1			
2007	56,365.4	25,342.8	31,022.6	6.7	5.1	8.0			
2008	56,562.4	25,290.5	31,271.8	0.3	-0.2	0.8			
Quarterly data 08 2	14,749.1	6,626.3	8,122.8	1.6	1.6	1.6			
08 3	14,923.3	6,466.4	8,456.9	1.5	0.7	2.2			
08 4	14,053.2	6,340.4	7,712.7	-5.6	-6.2	-5.2			
09 1	11,485.1	5,274.5	6,210.5	-10.5	-10.0	-11.0			
09 2	13,550.1	6,150.0	7,400.1	-8.1	-7.2	-8.9			



Source: B.C. & GVRD data - Statistics Canada, monthly survey (CANSIM 080-0015).



Fraser Valley  
Regional District

**Was 5** **Manufacturing Principal Statistics - Search at [www.made-in-bc.ca](http://www.made-in-bc.ca) for local firms, products and more**

This table is discontinued. Sub-provincial manufacturing principal statistics are no longer being produced.

5		Tourism Room Revenue (\$ Thousands)					Tourism Room Revenue Index 2003=100	
Fraser Valley Regional District	Year	Total/YTD	Q1	Q2	Q3	Q4	Index	
		2005	39,593.9	7,296.7	9,458.2	14,350.5	8,488.6	200
	2006	42,239.6	7,672.8	10,218.5	15,279.5	9,068.9	180	
	2007	44,671.3	8,394.5	11,072.6	15,675.9	9,528.3	160	
	2008	45,667.6	9,811.9	11,213.5	15,462.8	9,179.3	140	
	2009	18,951.7	8,636.8	10,314.9			120	
British Columbia	2005	1,681,563.6	351,779.6	404,639.8	610,273.7	314,870.6	100	
	2006	1,807,608.7	366,165.1	450,747.7	652,476.4	338,219.5	80	
	2007	1,963,958.7	412,949.3	488,493.9	697,545.2	364,970.3	60	
	2008	1,977,424.9	435,223.9	503,276.7	687,708.3	351,215.9	40	
	2009	802,329.6	378,880.1	423,449.6			20	
2008 Room Revenue by Accommodation Type (\$Thousands   %Share)								
TOTAL	45,753.0	100.0%						
*Abbotsford/Mission	14,186.0	31.0%						
*District Municipality of	4,053.0	8.9%						

Source: Hotel tax database maintained by Consumer Taxation Branch, Ministry of Small Business and Revenue. Published in detail monthly by BC Stats.

All room revenue data has been revised. For an explanation, see our periodical called *Tourism Sector Monitor*, April and May issues of 2009.  
Link to explanation of changes: [http://www.bcstats.gov.bc.ca/pubs/pr\\_tour.asp](http://www.bcstats.gov.bc.ca/pubs/pr_tour.asp)

6		Building Permits						Total Permits Index 2003=100	
Year	Total Building Permits	Non Residential				Residential		Index	
		Total Non Res.	Industrial	Commercial	Institutional & Gov't			B.C.	Region
		<-- \$ Millions -->						Units	
2001	294.5	193.4	43.8	64.1	85.5	101.1	859	350	
2002	274.9	84.1	28.7	27.9	27.5	190.7	1,690	300	
2003	298.0	107.3	29.1	54.7	23.4	190.7	1,674	250	
2004	361.2	102.8	55.2	22.1	25.4	258.4	2,133	200	
2005	499.6	212.0	37.6	51.3	123.1	287.5	2,277	150	
2006	593.3	269.5	52.8	90.9	125.8	323.8	2,639	100	
2007	550.9	178.7	38.6	112.4	27.7	372.2	2,589	50	
2008	539.4	242.1	40.6	164.3	37.2	297.4	1,946	0	
Jan-Aug 08	422.1	163.7	24.7	106.0	32.9	258.4	1,710	A S O N D J F M A M J J A	
Jan-Aug 09	227.4	131.5	28.4	62.3	40.9	95.9	631	09	

Not all projects require a building permit, and not all municipalities & regions report. Latest month preliminary, previous month is revised.  
Source: Statistics Canada (data collected from municipal and Regional District offices).

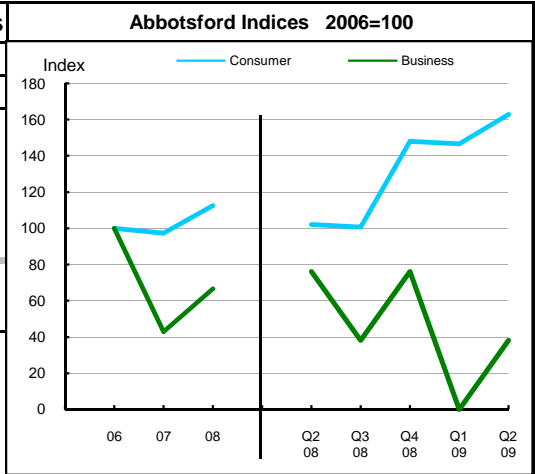


Fraser Valley  
Regional District

7 Business and Consumer Bankruptcies, Quarterly - NEW series						
Year	Abbotsford		Vancouver		Mainland/Southwest	
	Consumer	Business	Consumer	Business	Consumer	Business
2006	270	21	3,332	230	3,931	281
2007	263	9	3,091	201	3,653	230
2008	304	14	3,361	161	3,985	187
2009						
2010						
YTD-08	136	8	1,518	72	1,815	86
YTD-09	209	2	2,365	107	2,831	115

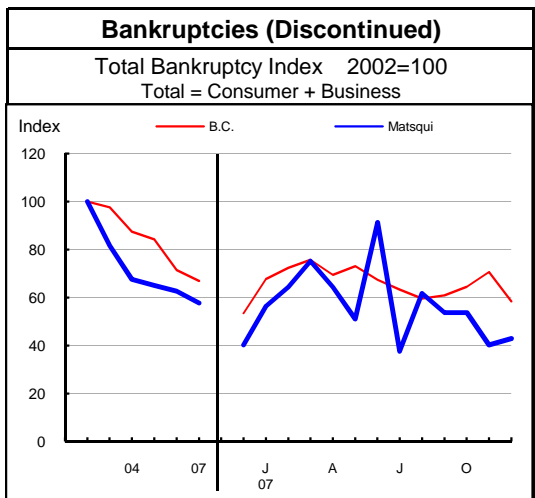
Source: Office of the Superintendent of Bankruptcy, Government of Canada  
Total bankruptcy index includes business and consumer bankruptcies.

Note: Bankruptcy is not a good measure of business failure. Most firms that fail wind down operations and withdraw from business.



8 Incorporations			
Year	Incorporations	Incorporations Index 2003=100	
		B.C.	Region
2001	736		
2002	783		
2003	985		
2004	1,064		
2005	1,347		
2006	1,477		
2007	1,555		
2008	1,285		
Jan-Sep 08	1,025		
Jan-Sep 09	798		

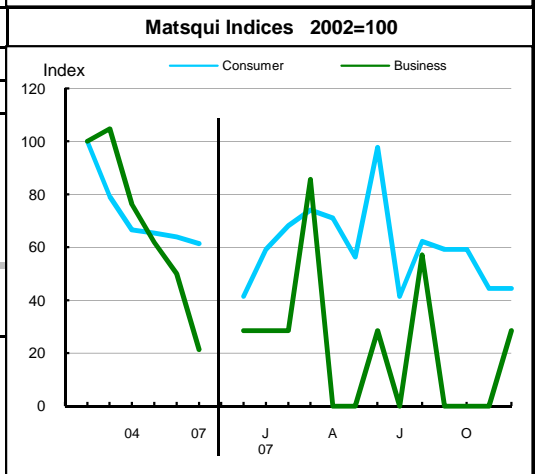
Source: Incorporations - (B.C.) Ministry of Finance



9 Business and Consumer Bankruptcies (Discontinued)						
Year	Matsqui		Chilliwack		B.C.	
	Consumer	Business	Consumer	Business	Consumer	Business
2003	321	44	184	21	9,385	1,002
2004	270	32	153	12	8,378	922
2005	265	26	147	6	8,173	786
2006	259	21	145	5	7,021	587
2007	249	9	108	5	6,651	470
Jan-Dec 06	259	21	145	5	7,022	587
Jan-Dec 07	249	9	108	5	6,651	470

Source: Office of the Superintendent of Bankruptcy, Government of Canada  
Total bankruptcy index includes business and consumer bankruptcies.

Note: Bankruptcy is not a good measure of business failure. Most firms that fail wind down operations and withdraw from business.





Fraser Valley  
Regional District

Dependence on the Safety Net

10 Basic Income Assistance (Basic Income Assistance Recipients in Subject Group as a percent of Reference Group)							11 Employment Insurance (was UI) (EI beneficiaries as a percent of Reference Group)									
Subject Group (receiving benefits)		All (0-64)	Children <19 yrs in Families	Young Adults (19-24)	'Mid' Group (25-54)	Single Parent Women	Working Age (19-64)	Young Adults (19-24)	'Mid' Group (25-54)	'Older' Workers (55-64)	Note Older Data					
Reference Group		Total Pop. 0-64	Total Pop. <19	Total Pop. 19-24	Total Pop. 25-54	Tot. Female 19-64	Total Pop. 19-64	Total Pop. 19-24	Total Pop. 25-54	Total Pop. 55-64						
Fraser Valley Regional District	Sep '07	1.8	2.4	1.7	1.7	0.9	1.9	1.5	2.0	2.0	Mar '07					
	Dec '07	1.8	2.4	1.8	1.8	0.8	1.3	1.0	1.3	1.3	Jun '07					
	Mar '08	1.8	2.4	1.7	1.8	0.8	1.1	0.9	1.2	0.9	Sep '07					
	Jun '08	1.8	2.4	1.8	1.8	0.8	2.0	1.3	1.9	2.8	Dec '07					
	Sep '08	1.8	2.4	1.9	1.8	0.8	1.7	1.3	1.7	2.0	Mar '08					
	Dec '08	2.0	2.6	2.2	2.0	0.9	2.4	1.9	2.5	2.7	Jun '08					
	Mar '09	2.2	2.7	2.6	2.3	1.0	1.2	0.9	1.3	0.9	Sep '08					
	Jun '09	2.3	2.9	2.7	2.3	1.0	2.7	2.3	2.7	3.2	Dec '08					
	Sep '09	2.4	3.0	2.9	2.4	1.1	4.2	4.1	4.3	3.8	Mar '09					
Duration of Dependence on Income Assistance (As of September 2009)		All* Income Assistance Recipients as % of Total Pop 0-64: Region Compared to B.C.					EI Beneficiaries Aged 19-64 as % of Working Age Population									
Region		Percent					Percent									
B.C.		Region					B.C.					Region				
Total Number of Recipients	5,640	72,592														
Percent Distribution by Duration																
<1 Year	65.0	65.3														
1-2 Years	19.0	18.2														
>2 Years	16.0	16.4														
Source: Ministry of Children and Family Development administrative files and BC Stats population estimates. These figures include only a subset of those receiving income assistance. Excluded are those on Continuous Assistance (disabled or with persistent multiple barriers to employment, children in the home of a relative, and OAS/seniors. A recipient is defined as 'each person living in a family or living alone that is receiving basic income assistance'. Data does not include Aboriginal people living on Reserve. Note: '-' Data too small to release.							Source: Ministry of Housing and Social Development and BC Stats population estimates.									
12 Dependence on Basic Income Assistance and/or Employment Insurance (Basic Income Assistance Recipients + Employment Insurance Recipients in Subject Group as a percent of Reference Group)																
Subject Group (receiving assistance)		All (19-64)	Young Adults (19-24)	'Mid' Group (25-54)	'Older' Group (55-64)	All 'Safety Net' Recipients as % of Total Pop 19-64: Region Compared to B.C.										
Reference Group		Total Pop. 19-64	Total Pop. 19-24	Total Pop. 25-54	Total Pop. 55-64	Percent										
Fraser Valley Regional District	Mar '07	3.4	3.2	3.7	2.6											
	Jun '07	2.7	2.6	3.0	1.8											
	Sep '07	2.5	2.5	2.8	1.3											
	Dec '07	3.4	3.0	3.6	3.2											
	Mar '08	3.2	3.0	3.4	2.5											
	Jun '08	3.9	3.7	4.2	3.1											
	Sep '08	2.7	2.7	3.1	1.3											
	Dec '08	4.4	4.4	4.6	3.7											
Mar '09	6.1	6.6	6.4	4.5												

Note: The EI figures reported above no longer include persons claiming parental/adoption leave. Previous issues of this table did include them.



**Fraser Valley  
Regional District**

**13**

**Demographics**

Although Fraser Valley is still far more rural than the neighbouring GVRD, the population density is over four times that of the province as a whole. The Fraser Valley has experienced strong growth, although rates have slowed somewhat since the late 1990s. As with all areas of British Columbia, the population has aged. However, this ageing has been slower than the provincial rate, adding about almost 6 years to its median age, compared with a provincial gain of 7 years. Despite this ageing, this region has a fairly young population, with a median age almost 2.5 younger than the provincial median in 2006. The more rural nature of the region is one of the reasons for the substantially higher total fertility rate compared to the provincial rate. As a result, the ratio of children (aged 17 and under) to working age population (aged 18 to 64) remains higher than the corresponding provincial ratios, despite declines over the past two decades. Elderly dependency ratios are also higher than the provincial average. As a result, Fraser Valley has a larger dependency burden than the province as a whole, with 6 dependents for every 10 people of working age, compared with a provincial ratio of 5.1 to 10. In contrast to the provincial pattern of more females, the sex ratio in this region is fairly evenly balanced between males and females. Natural increase remains positive, as births outpace deaths by a substantial margin. This area generally experiences net migration inflows and this, in combination with natural increase has led to substantial growth over the last twenty years.

**14**

**Projection**

Net migration to this region has been high in the last couple of decades, and this will likely continue to be the case in the future, due in part to the large availability of land and the proximity to the delta and its ports. However, growth should be tempered as a result of the GVRD's Liveable Region Strategic Plan, which attempts to make more efficient use of land in the Growth Concentration Area and to draw more people into urban Vancouver. Despite this, the combination of continued high natural increase over most of the projection period and substantial inflows of migrants will likely result in strong population growth of about 44 percent. The population will also continue to age slowly and, by 2036, there will likely be almost 7 dependents for every 10 people of working age. Although the elderly are expected to contribute the most to overall dependency by 2036, those under the age of 18 also make a significant contribution.

**15**

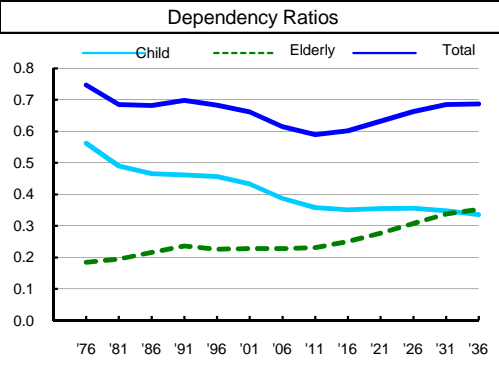
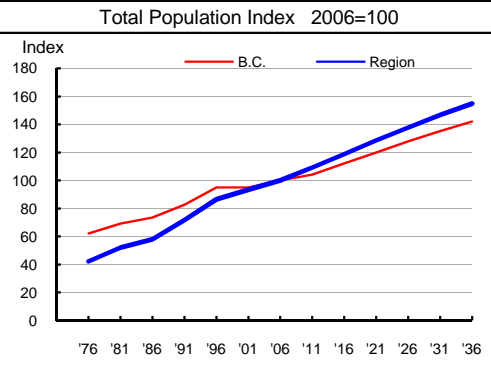
**Selected Demographic Characteristics**

Year	Population by age group, Thousands of persons							Households (,000)	Dependency Ratios			Year
	0-4	5-17	18-24	25-44	45-64	65+	All Ages		Child	Elderly	Total	
1976	8.5	27.8	14.4	28.1	22.0	12.0	112.9	35.5	0.562	0.185	0.747	1976
1981	11.2	29.3	17.9	38.7	26.1	16.1	139.3	46.8	0.490	0.195	0.685	1981
1986	12.6	30.4	17.2	46.5	28.6	20.0	155.2	55.8	0.466	0.217	0.682	1986
1991	15.1	36.9	17.0	60.2	35.4	26.7	191.2	67.0	0.462	0.237	0.699	1991
1996	17.6	45.1	20.4	72.2	44.7	31.1	231.0	82.2	0.457	0.227	0.684	1996
2001	16.3	48.6	22.9	72.9	54.1	34.3	249.0	89.8	0.433	0.229	0.662	2001
2006	16.3	47.7	26.1	73.5	65.5	37.7	266.7	98.0	0.387	0.228	0.615	2006
2011	18.4	47.2	28.5	79.0	75.9	42.4	291.4	110.2	0.358	0.231	0.590	2011
2016	19.9	49.5	27.4	87.6	82.8	49.7	316.9	123.5	0.351	0.251	0.602	2016
2021	20.7	53.9	26.4	95.5	88.0	58.1	342.6	134.2	0.355	0.277	0.632	2021
2026	20.9	57.7	28.0	99.6	93.2	67.9	367.3	144.5	0.356	0.307	0.663	2026
2031	21.2	59.4	31.0	100.9	99.8	78.3	390.6	155.2	0.348	0.338	0.686	2031
2036	21.9	60.3	32.9	102.9	108.8	86.0	412.8	165.8	0.336	0.352	0.688	2036

Age groups reflect pre-school, school, advanced education, family formation, mature workers and retired.

Child Dependency:  
(ages 0-17) / (ages 18-64)

Elderly Dependency:  
(ages 65+) / (ages 18-64)



Source: Population data are Projection P-34, run in Summer 2009. Figures are adjusted for Census undercount and are for July 1st of stated year.  
Note: Demographics and Projection notes in Tables 13 and 14 are from Projection P-33, run the Summer 2008.