



Nanaimo
Regional District

1	General Economy
<p>Municipalities in Regional District: Nanaimo, Parksville, Qualicum Beach, Lantzville</p> <p>The main economic activities include forestry, tourism, manufacturing, transportation and warehousing, and services. The Port of Nanaimo dominates the activity in the area, making the city the main service and distribution centre for central Vancouver Island. The forest sector activity includes logging, lumber mills, veneer production and pulp manufacturing. Some of the lumber mills have announced closures or output reductions. In Nanaimo, the Malaspina College has now been designated Vancouver Island University. An expansion of the Cruise Ship terminal has been proposed and several condominium projects are proposed or under construction. The Parksville / Qualicum area, north of Nanaimo, is known for its retirement community. Resort expansions are underway, and the construction of retirement living facilities are proposed or underway.</p>	

The notes above and later in this report on Demographics and Projections are the basis for BC Stats population projection P33 completed in the Summer of 2008. The projections are updated annually to reflect known demographic shifts and economic conditions. Full projections with "Components of Change", "Special Age Groups", "5 Year Age Cohorts by Sex", and accompanying notes are available for B.C., the 8 development regions, the 28 regional districts, the 79 local health areas (LHAs) and a number of "special areas" of local interest which are not part of a province-wide geocoding system. Individual areas, including age and sex detail, are modestly priced. Users requiring only total population projections are able to self serve for free from our population projection page: www.bcstats.gov.bc.ca/data/pop/pop/popproj.asp The full B.C. level projection is available free on the above page.

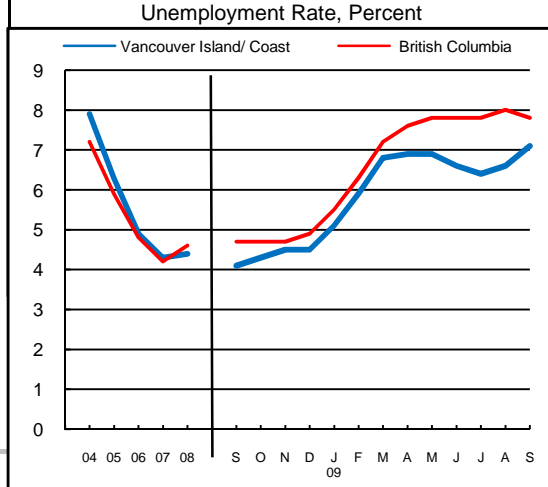
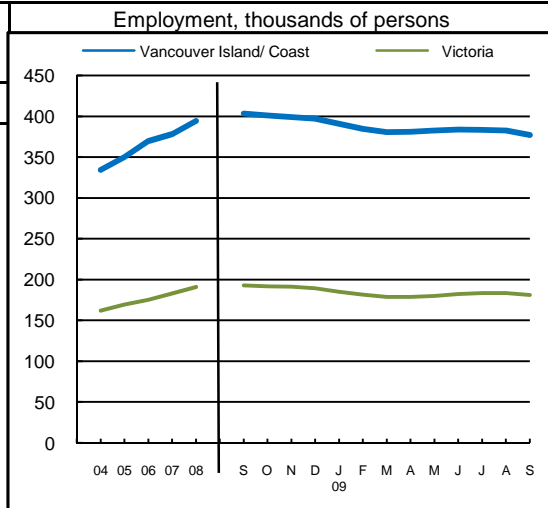
2	Economic Structure - Number of Business Locations, by Sector, by Employment Size, December 2008									
NAICS Code	Industry Sector based on NAICS Canada (North American Industrial Classification System)	Locations With No Employees	Nanaimo						British Columbia	
			Firms with Employees						With Employees	
			Less Than 20	20 to 49	50 to 199	200 Plus	All Sizes with Emp.	Percent of Total	Percent of Total	All Sizes
11	Total, All Industries	6,060	4,818	384	132	23	5,357	100.0%	100.0%	175,003
	Agric., Forestry, Fishing & Hunt	377	156	5	2	1	164	3.1%	4.0%	7,009
21	Mining & Oil & Gas Extract.	17	15	0	0	0	15	0.3%	0.6%	1,071
22	Utilities	6	2	2	0	0	4	0.1%	0.1%	203
23	Construction	1,114	726	57	11	0	794	14.8%	12.1%	21,108
31	Manufacturing (31-33)	179	158	20	7	1	186	3.5%	4.5%	7,879
41	Wholesale Trade	187	232	22	9	0	263	4.9%	5.9%	10,359
44	Retail Trade (44-45)	354	716	52	32	3	803	15.0%	11.9%	20,742
48	Transp. & Warehousing (48-49)	256	198	12	6	1	217	4.1%	4.4%	7,734
51	Information & Cultural Indust.	69	35	7	1	1	44	0.8%	1.4%	2,412
52	Finance & Insurance	346	162	26	4	1	193	3.6%	3.8%	6,564
53	Real Estate & Rental & Leasing	949	208	9	4	0	221	4.1%	4.5%	7,835
54	Profes'nl, Scientif. & Tech. Srv	833	553	12	1	0	566	10.6%	11.0%	19,278
55	Mgmt. of Companies & Enter.	365	62	1	1	0	64	1.2%	1.6%	2,818
56	Admin. & Sup'rt, Waste Mgmt.	244	235	18	6	3	262	4.9%	4.9%	8,513
61	Educational Services	68	35	6	0	3	44	0.8%	1.4%	2,363
62	Health Care & Social Assistance	142	513	21	11	4	549	10.2%	8.4%	14,773
71	Arts, Entertainment & Recreation	87	76	10	3	0	89	1.7%	1.6%	2,873
72	Accom. & Food Services	100	261	89	25	4	379	7.1%	6.7%	11,639
81	Other Serv's (ex. Public Admin.)	365	467	10	4	0	481	9.0%	10.9%	19,095
91	Public Administration	2	8	5	5	1	19	0.4%	0.4%	735

Source: Statistics Canada, Business Register Division. Note: This table formerly identified **business establishments**.



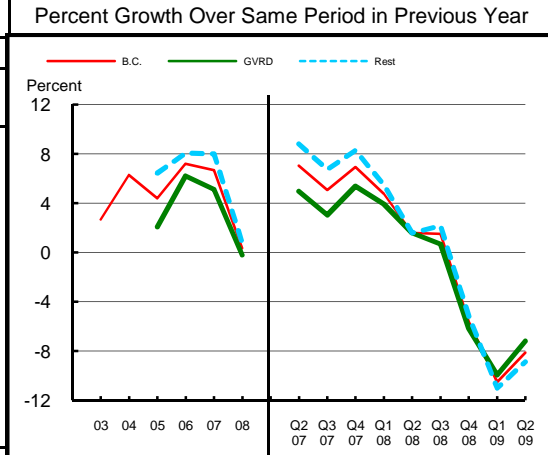
Nanaimo
Regional District

3 Employment and Unemployment Rate, monthly data are 3-month moving average, actual, ending in stated month							
	Vancouver Island/ Coast		Victoria		British Columbia		
	Emp. ('000)	Unemp. %	Emp. ('000)	Unemp. %	Emp. ('000)	Unemp. %	
1999	330.0	7.9	155.3	6.6	1,894.4	8.3	
2000	327.4	7.8	155.3	6.7	1,931.3	7.1	
2001	307.3	9.2	150.8	6.3	1,921.6	7.7	
2002	317.4	8.7	155.7	7.0	1,965.0	8.5	
2003	319.1	8.6	158.7	6.2	2,014.7	8.0	
2004	334.2	7.9	162.0	5.3	2,062.7	7.2	
2005	350.0	6.3	169.3	4.5	2,130.5	5.9	
2006	369.5	4.9	175.2	3.7	2,195.5	4.8	
2007	378.3	4.3	182.9	3.3	2,266.3	4.2	
2008	394.2	4.4	190.9	3.3	2,314.3	4.6	
2008 Jan	375.8	4.5	186.2	3.0	2,286.5	4.1	
2008 Feb	378.0	5.0	185.0	3.3	2,278.9	4.2	
2008 Mar	380.4	5.2	186.8	3.2	2,284.9	4.4	
2008 Apr	386.9	4.6	190.0	2.8	2,295.0	4.4	
2008 May	391.4	4.3	193.8	2.7	2,313.3	4.5	
2008 Jun	395.9	3.9	195.0	2.8	2,329.8	4.4	
2008 Jul	401.8	3.8	195.1	3.3	2,345.0	4.5	
2008 Aug	403.3	3.8	194.0	3.7	2,350.7	4.6	
2008 Sep	403.3	4.1	192.8	3.7	2,337.7	4.7	
2008 Oct	401.0	4.3	191.8	3.8	2,325.3	4.7	
2008 Nov	399.0	4.5	191.2	3.4	2,312.5	4.7	
2008 Dec	397.2	4.5	189.2	3.6	2,304.8	4.9	
2009 Jan	390.9	5.1	184.9	3.9	2,278.4	5.5	
2009 Feb	384.4	5.9	181.3	4.9	2,251.1	6.3	
2009 Mar	380.7	6.8	178.8	5.5	2,227.5	7.2	
2009 Apr	381.0	6.9	178.9	6.0	2,229.0	7.6	
2009 May	382.5	6.9	180.1	6.2	2,243.1	7.8	
2009 Jun	383.5	6.6	182.4	6.2	2,264.6	7.8	
2009 Jul	383.1	6.4	183.4	6.1	2,275.9	7.8	
2009 Aug	382.4	6.6	183.4	6.1	2,280.5	8.0	
2009 Sep	376.9	7.1	181.1	6.6	2,275.8	7.8	
2009 Oct							
2009 Nov							
2009 Dec							
Average:							
ytd average	Jan-Sep08	393.2	4.4	191.5	3.2	2,317.5	4.5
based on	Jan-Sep09	380.2	6.8	180.8	6.1	2,256.0	7.6
actual data	% Change	-3.3		-5.6		-2.7	



Source: Labour Force Survey, Statistics Canada. Sub-provincial regions are development regions or census metropolitan areas.

4 Retail Sales - based on Statistics Canada monthly survey							Percent Growth Over Same Period in Previous Year		
Year or Year/Quarter	\$ millions of retail sales			Percent change on year ago			B.C.	Greater Vancouver	Rest of Province
	B.C.	Greater Vancouver	Rest of Province	B.C.	Greater Vancouver	Rest of Province			
2004	47,216.6	22,243.6	24,973.0	6.3	n/a	n/a			
2005	49,286.3	22,702.6	26,583.7	4.4	2.1	6.4			
Annual data 2006	52,837.1	24,110.2	28,726.9	7.2	6.2	8.1			
2007	56,365.4	25,342.8	31,022.6	6.7	5.1	8.0			
2008	56,562.4	25,290.5	31,271.8	0.3	-0.2	0.8			
Quarterly data 08 2	14,749.1	6,626.3	8,122.8	1.6	1.6	1.6			
08 3	14,923.3	6,466.4	8,456.9	1.5	0.7	2.2			
08 4	14,053.2	6,340.4	7,712.7	-5.6	-6.2	-5.2			
09 1	11,485.1	5,274.5	6,210.5	-10.5	-10.0	-11.0			
09 2	13,550.1	6,150.0	7,400.1	-8.1	-7.2	-8.9			



Source: B.C. & GVRD data - Statistics Canada, monthly survey (CANSIM 080-0015).



Nanaimo
Regional District

Was 5 **Manufacturing Principal Statistics - Search at www.made-in-bc.ca for local firms, products and more**

This table is discontinued. Sub-provincial manufacturing principal statistics are no longer being produced.

5		Tourism Room Revenue (\$ Thousands)					Tourism Room Revenue Index 2003=100	
	Year	Total/YTD	Q1	Q2	Q3	Q4	Index	
	Nanaimo Regional District	2005	36,208.2	5,690.7	9,319.4	15,342.6	5,855.5	
2006		38,176.1	5,536.5	9,522.7	16,517.0	6,599.8		
2007		41,953.6	6,415.5	10,357.4	17,752.3	7,428.5		
2008		42,437.6	6,802.6	10,061.1	17,895.8	7,678.1		
2009		16,243.4	6,144.0	10,099.4				
British Columbia	2005	1,681,563.6	351,779.6	404,639.8	610,273.7	314,870.6		
	2006	1,807,608.7	366,165.1	450,747.7	652,476.4	338,219.5		
	2007	1,963,958.7	412,949.3	488,493.9	697,545.2	364,970.3		
	2008	1,977,424.9	435,223.9	503,276.7	687,708.3	351,215.9		
	2009	802,329.6	378,880.1	423,449.6				
2008 Room Revenue by Accommodation Type (\$Thousands %Share)								
TOTAL	42,438.0	100.0%						
Hotels	18,202.0	42.9%						
Motels	10,103.0	23.8%						
Vacation Rentals	11,890.0	28.0%						
City of Nanaimo	21,543.0	50.8%						

asterisk before location denotes sub-area detail

Source: Hotel tax database maintained by Consumer Taxation Branch, Ministry of Small Business and Revenue
Published in detail monthly by BC Stats.

All room revenue data has been revised. For an explanation, see our periodical called *Tourism Sector Monitor*, April and May issues of 2009.
Link to explanation of changes: http://www.bcstats.gov.bc.ca/pubs/pr_tour.asp

6		Building Permits						Total Permits Index 2003=100	
Year	Total Building Permits	Non Residential				Residential		Index	
		Total Non Res.	Industrial	Commercial	Institutional & Gov't	Units			
		<-- \$ Millions -->							
2001	120.9	51.0	2.6	30.7	17.7	69.9	488		
2002	141.1	30.8	1.5	21.1	8.2	110.2	764		
2003	209.8	53.7	3.2	34.2	16.3	156.0	1,075		
2004	249.9	23.6	3.3	16.0	4.3	226.2	1,367		
2005	320.4	58.2	3.7	33.7	20.8	262.3	1,377		
2006	385.4	114.8	7.2	90.6	17.1	270.6	1,369		
2007	409.6	103.8	6.5	46.6	50.7	305.7	1,540		
2008	347.1	59.8	16.7	36.4	6.7	287.3	1,318		
Jan-Aug 08	244.8	44.9	13.0	25.4	6.4	199.9	996		
Jan-Aug 09	154.5	52.1	4.5	32.3	15.3	102.4	485		

Not all projects require a building permit, and not all municipalities & regions report. Latest month preliminary, previous month is revised.
Source: Statistics Canada (data collected from municipal and Regional District offices).

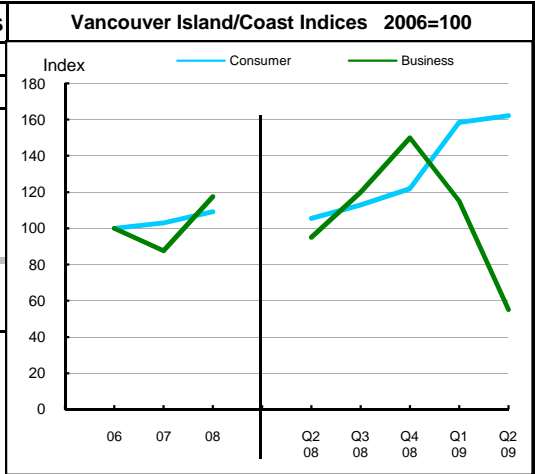


Nanaimo
Regional District

7 Business and Consumer Bankruptcies, Quarterly - NEW series						
Year	Vancouver Island/Coast		British Columbia			
	Consumer	Business	Consumer	Business	Consumer	Business
2006	1,368	80	7,020	585		
2007	1,410	70	6,651	470		
2008	1,495	94	7,293	454		
2009						
2010						
YTD-08	692	40	3,335	202		
YTD-09	1,097	34	5,400	232		

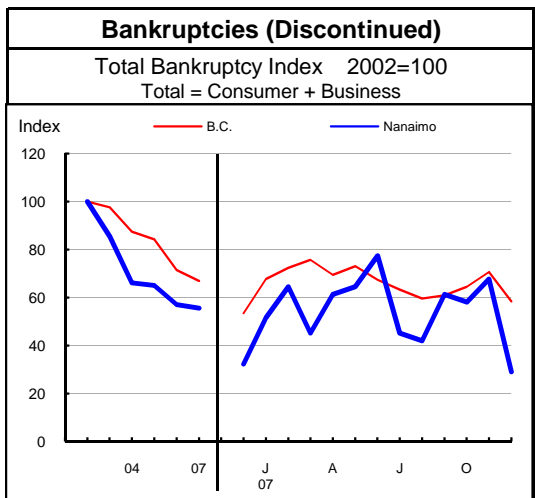
Source: Office of the Superintendent of Bankruptcy, Government of Canada
Total bankruptcy index includes business and consumer bankruptcies.

Note: Bankruptcy is not a good measure of business failure. Most firms that fail wind down operations and withdraw from business.



8 Incorporations			
Year	Incorporations	Incorporations Index 2003=100	
		Index	
2001	463		
2002	431		
2003	502		
2004	606		
2005	698		
2006	778		
2007	790		
2008	716		
Jan-Sep 08	563		
Jan-Sep 09	433		

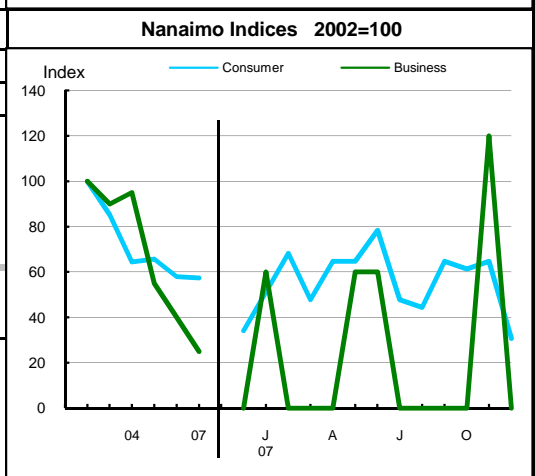
Source: Incorporations - (B.C.) Ministry of Finance



9 Business and Consumer Bankruptcies (Discontinued)						
Year	Nanaimo		Non-urban B.C.		B.C.	
	Consumer	Business	Consumer	Business	Consumer	Business
2003	300	18	1,186	173	9,385	1,002
2004	227	19	1,139	175	8,378	922
2005	231	11	1,097	155	8,173	786
2006	204	8	856	106	7,021	587
2007	202	5	827	75	6,651	470
Jan-Dec 06	204	8	856	106	7,022	587
Jan-Dec 07	202	5	827	75	6,651	470

Source: Office of the Superintendent of Bankruptcy, Government of Canada
Total bankruptcy index includes business and consumer bankruptcies.

Note: Bankruptcy is not a good measure of business failure. Most firms that fail wind down operations and withdraw from business.





Nanaimo
Regional District

Dependence on the Safety Net

10 Basic Income Assistance (Basic Income Assistance Recipients in Subject Group as a percent of Reference Group)							11 Employment Insurance (was UI) (EI beneficiaries as a percent of Reference Group)				
Subject Group (receiving benefits)		All (0-64)	Children <19 yrs in Families	Young Adults (19-24)	'Mid' Group (25-54)	Single Parent Women	Working Age (19-64)	Young Adults (19-24)	'Mid' Group (25-54)	'Older' Workers (55-64)	Note Older Data
Reference Group		Total Pop. 0-64	Total Pop. <19	Total Pop. 19-24	Total Pop. 25-54	Tot. Female 19-64	Total Pop. 19-64	Total Pop. 19-24	Total Pop. 25-54	Total Pop. 55-64	
Nanaimo Regional District	Sep '07	2.0	3.2	2.3	2.0	0.9	2.0	2.0	2.3	1.3	Mar '07
	Dec '07	2.1	3.2	2.4	2.2	0.9	1.3	1.5	1.5	0.8	Jun '07
	Mar '08	2.1	3.3	2.5	2.2	0.9	1.4	1.2	1.6	0.9	Sep '07
	Jun '08	2.1	3.3	2.4	2.2	0.9	2.0	2.2	2.2	1.3	Dec '07
	Sep '08	2.1	3.4	2.4	2.2	0.9	2.0	2.3	2.2	1.3	Mar '08
	Dec '08	2.5	3.9	3.0	2.5	1.0	3.3	3.1	3.7	2.5	Jun '08
	Mar '09	2.9	4.2	3.7	3.1	1.1	1.7	1.6	1.9	1.2	Sep '08
	Jun '09	3.1	4.4	4.0	3.2	1.1	2.7	3.5	2.9	1.7	Dec '08
	Sep '09	3.2	4.5	4.4	3.3	1.1	4.4	5.6	4.9	2.7	Mar '09
	Duration of Dependence on Income Assistance (As of September 2009)		All* Income Assistance Recipients as % of Total Pop 0-64: Region Compared to B.C.					EI Beneficiaries Aged 19-64 as % of Working Age Population			
Region		Percent					Percent				
Total Number of Recipients	3,629	72,592									
Percent Distribution by Duration											
<1 Year	66.2	65.3									
1-2 Years	17.0	18.2									
>2 Years	16.8	16.4									
Source: Ministry of Children and Family Development administrative files and BC Stats population estimates. These figures include only a subset of those receiving income assistance. Excluded are those on Continuous Assistance (disabled or with persistent multiple barriers to employment, children in the home of a relative, and OAS/seniors. A recipient is defined as 'each person living in a family or living alone that is receiving basic income assistance'. Data does not include Aboriginal people living on Reserve. Note: '-' Data too small to release.							Source: Ministry of Housing and Social Development and BC Stats population estimates.				
12 Dependence on Basic Income Assistance and/or Employment Insurance (Basic Income Assistance Recipients + Employment Insurance Recipients in Subject Group as a percent of Reference Group)											
Subject Group (receiving assistance)		All (19-64)	Young Adults (19-24)	'Mid' Group (25-54)	'Older' Group (55-64)	All 'Safety Net' Recipients as % of Total Pop 19-64: Region Compared to B.C.					
Reference Group		Total Pop. 19-64	Total Pop. 19-24	Total Pop. 25-54	Total Pop. 55-64	Percent					
Nanaimo Regional District	Mar '07	3.8	4.4	4.5	1.7						
	Jun '07	3.0	3.7	3.6	1.3						
	Sep '07	3.0	3.4	3.6	1.3						
	Dec '07	3.7	4.5	4.3	1.8						
	Mar '08	3.7	4.6	4.3	1.8						
	Jun '08	5.0	5.3	5.8	2.9						
	Sep '08	3.3	3.8	4.0	1.6						
	Dec '08	4.5	6.3	5.2	2.2						
	Mar '09	6.7	8.9	7.8	3.4						

Note: The EI figures reported above no longer include persons claiming parental/adoption leave. Previous issues of this table did include them.



**Nanaimo
Regional District**

13 Demographics

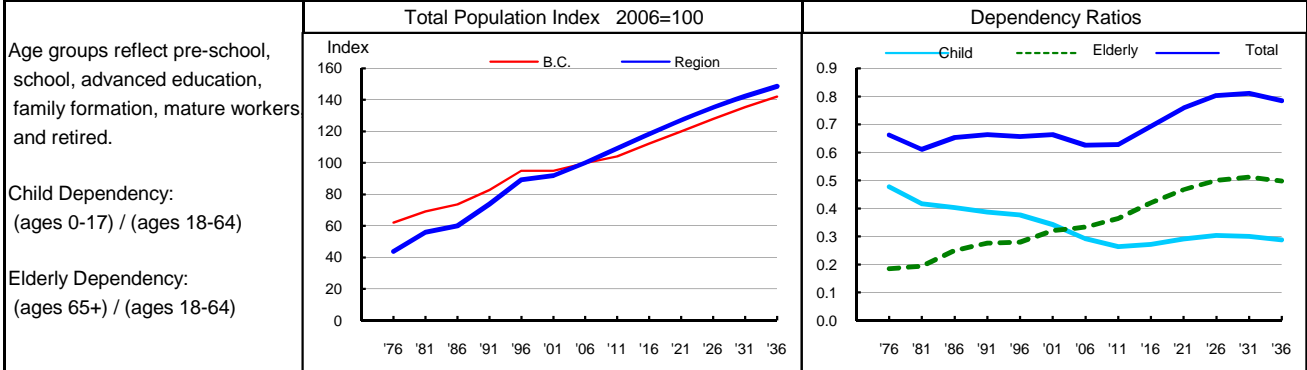
Although net migration to this region declined in the mid-eighties and late-nineties during the downturns in the forest sector, it remained positive, likely due to the strong service sector in Nanaimo. The age structure has shifted as the population has aged, adding 10.5 years to its median age since the mid 1980s. By 2007, Nanaimo was almost six years older than the provincial median. Fertility has decreased over the last two decades with rates dipping to below provincial levels in 1997, but recovering to higher levels in 2006. As fertility has decreased, so has the proportion of children. Elderly dependency has increased and it remains much higher than provincial ratios. Numerous service sector jobs combined with the substantial number of retirees in the Qualicum area are the likely reasons why there is a strong sex ratio bias in favour of females. With more females than males, Nanaimo is unlike neighbouring regions that are more dependent on male-dominated forest sector jobs. Deaths have increased dramatically over the last twenty years, outnumbering births by 2000. Growth in Nanaimo region is now completely driven by in-migration, and strong net inflows have resulted in significant growth in the last several years.

14 Projection

Nanaimo's role as service centre for central Vancouver Island and the growing retirement base, particularly in the Parksville/Qualicum area, should ensure that the region continues to experience strong growth. It is projected that the recent strong, positive net migration will persist and the region will continue to expand rapidly. However, deaths already outnumber births and natural increase is expected to become increasingly negative over the next three decades, resulting in slower growth by the end of the projection. Nonetheless, Nanaimo's population is expected to grow by almost 38 percent by 2036. The population will continue to age and, by the end of the projection, this region will likely have over 7.5 dependents for every 10 people of working age. Most of these dependents will be seniors.

15 Selected Demographic Characteristics

Year	Population by age group, Thousands of persons							Households (,000)	Dependency Ratios			Year
	0-4	5-17	18-24	25-44	45-64	65+	All Ages		Child	Elderly	Total	
1976	4.1	13.7	7.9	15.5	13.9	6.9	61.9	21.5	0.477	0.185	0.662	1976
1981	5.5	15.0	9.6	23.0	16.6	9.5	79.2	29.5	0.417	0.194	0.611	1981
1986	5.7	15.0	8.1	25.3	18.0	12.9	85.0	34.1	0.403	0.250	0.653	1986
1991	6.5	17.7	8.5	31.8	22.5	17.4	104.4	41.6	0.387	0.277	0.664	1991
1996	7.3	21.4	10.1	36.9	29.2	21.3	126.2	51.4	0.376	0.280	0.656	1996
2001	5.8	20.9	10.0	32.5	35.6	25.0	129.8	55.3	0.342	0.321	0.663	2001
2006	5.5	20.0	11.9	30.8	44.2	29.0	141.2	60.7	0.293	0.333	0.626	2006
2011	6.6	18.4	12.7	33.8	48.3	34.5	154.2	67.9	0.264	0.364	0.628	2011
2016	7.5	19.3	11.9	38.8	48.0	41.5	167.1	75.3	0.272	0.421	0.693	2016
2021	8.0	21.7	11.1	43.5	47.5	47.7	179.5	80.8	0.291	0.467	0.759	2021
2026	8.2	24.0	11.6	46.2	48.1	52.9	190.9	85.7	0.304	0.499	0.803	2026
2031	8.2	25.1	13.3	46.2	51.5	56.8	201.0	90.4	0.300	0.511	0.811	2031
2036	8.4	25.4	14.5	46.6	56.6	58.5	209.9	95.2	0.287	0.498	0.785	2036



Source: Population data are Projection P-34, run in Summer 2009. Figures are adjusted for Census undercount and are for July 1st of stated year.
Note: Demographics and Projection notes in Tables 13 and 14 are from Projection P-33, run the Summer 2008.