



**Alberni-Clayoquot  
Regional District**

<b>1</b>	<b>General Economy</b>
<p>Municipalities in Regional District: Port Alberni, Tofino, Ucluelet</p> <p>The main economic activities of this regional district are forestry and tourism. The forestry industry has been important for the area historically. It is home to several lumber mills and a pulp and paper production facility. Some lumber mills have announced closures or output reductions as a result of the high dollar and lower demand from the U.S. The Arrowsmith TSA, located partially in this region, had its annual allowable cut increased in 2004. The area has a growing tourism industry that is helping reduce its reliance on resource extraction. The area is well known for its outdoor activities and coastal communities. Both Tofino and Ucluelet have recently been undergoing development expansions with several resort expansions either proposed or underway. The area has both a commercial and sport fishery and both shell fish and fin fish farming exist along it's the western coast.</p>	

The notes above and later in this report on Demographics and Projections are the basis for BC Stats population projection P33 completed in the Summer of 2008. The projections are updated annually to reflect known demographic shifts and economic conditions. Full projections with "Components of Change", "Special Age Groups", "5 Year Age Cohorts by Sex", and accompanying notes are available for B.C., the 8 development regions, the 28 regional districts, the 79 local health areas (LHAs) and a number of "special areas" of local interest which are not part of a province-wide geocoding system. Individual areas, including age and sex detail, are modestly priced. Users requiring only total population projections are able to self serve for free from our population projection page: [www.bcstats.gov.bc.ca/data/pop/pop/popproj.asp](http://www.bcstats.gov.bc.ca/data/pop/pop/popproj.asp) The full B.C. level projection is available free on the above page.

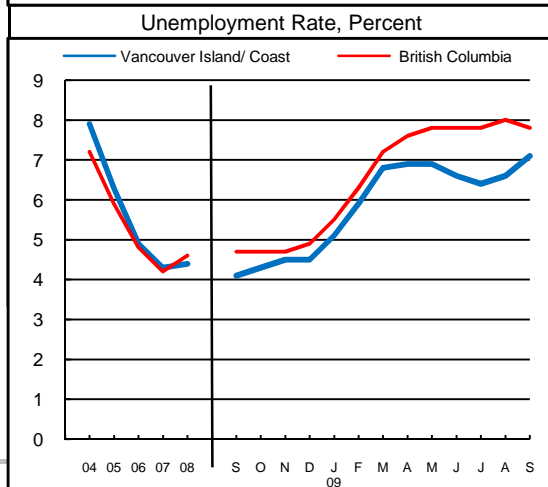
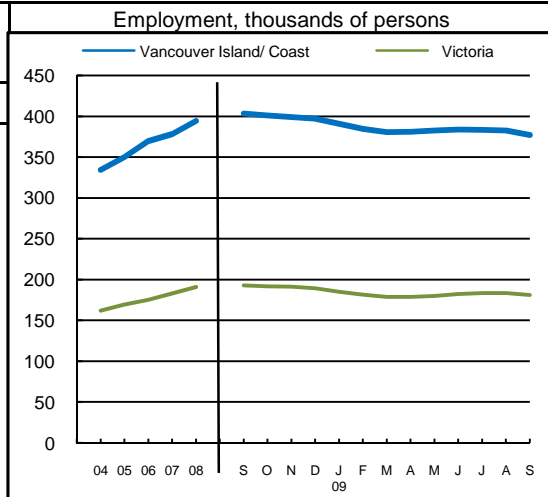
<b>2</b>		<b>Economic Structure - Number of Business Locations, by Sector, by Employment Size, December 2008</b>								
NAICS Code	Industry Sector based on NAICS Canada (North American Industrial Classification System)	Alberni-Clayoquot							British Columbia	
		Locations With No Employees	Firms with Employees						With Employees	
			Less Than 20	20 to 49	50 to 199	200 Plus	All Sizes with Emp.	Percent of Total	Percent of Total	All Sizes
	Total, All Industries	752	969	59	30	6	1,064	100.0%	100.0%	175,003
11	Agric., Forestry, Fishing & Hunt	119	66	3	1	0	70	6.6%	4.0%	7,009
21	Mining & Oil & Gas Extract.	4	1	0	0	0	1	0.1%	0.6%	1,071
22	Utilities	2	1	0	0	0	1	0.1%	0.1%	203
23	Construction	104	130	2	0	0	132	12.4%	12.1%	21,108
31	Manufacturing (31-33)	19	33	8	3	3	47	4.4%	4.5%	7,879
41	Wholesale Trade	18	27	2	0	0	29	2.7%	5.9%	10,359
44	Retail Trade (44-45)	48	143	5	10	1	159	14.9%	11.9%	20,742
48	Transp. & Warehousing (48-49)	49	46	5	1	0	52	4.9%	4.4%	7,734
51	Information & Cultural Indust.	2	10	0	0	0	10	0.9%	1.4%	2,412
52	Finance & Insurance	37	33	5	1	0	39	3.7%	3.8%	6,564
53	Real Estate & Rental & Leasing	99	41	0	1	0	42	3.9%	4.5%	7,835
54	Profes'nl, Scientif. & Tech. Srv	57	61	1	0	0	62	5.8%	11.0%	19,278
55	Mgmt. of Companies & Enter.	48	10	0	0	0	10	0.9%	1.6%	2,818
56	Admin. & Sup'rt, Waste Mgmt.	27	44	2	2	0	48	4.5%	4.9%	8,513
61	Educational Services	6	6	1	1	1	9	0.8%	1.4%	2,363
62	Health Care & Social Assistance	25	102	4	2	0	108	10.2%	8.4%	14,773
71	Arts, Entertainment & Recreation	18	18	2	2	0	22	2.1%	1.6%	2,873
72	Accom. & Food Services	36	78	12	5	0	95	8.9%	6.7%	11,639
81	Other Serv's (ex. Public Admin.)	34	110	3	0	0	113	10.6%	10.9%	19,095
91	Public Administration	-	9	4	1	1	15	1.4%	0.4%	735

Source: Statistics Canada, Business Register Division. Note: This table formerly identified **business establishments**.



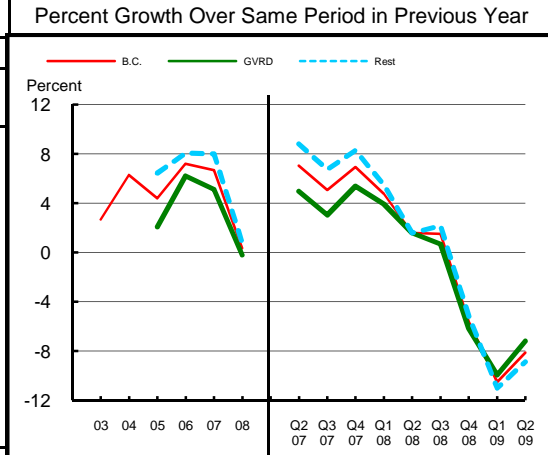
Alberni-Clayoquot  
Regional District

<b>3 Employment and Unemployment Rate, monthly data are 3-month moving average, actual, ending in stated month</b>							
	Vancouver Island/ Coast		Victoria		British Columbia		
	Emp. ('000)	Unemp. %	Emp. ('000)	Unemp. %	Emp. ('000)	Unemp. %	
1999	330.0	7.9	155.3	6.6	1,894.4	8.3	
2000	327.4	7.8	155.3	6.7	1,931.3	7.1	
2001	307.3	9.2	150.8	6.3	1,921.6	7.7	
2002	317.4	8.7	155.7	7.0	1,965.0	8.5	
2003	319.1	8.6	158.7	6.2	2,014.7	8.0	
2004	334.2	7.9	162.0	5.3	2,062.7	7.2	
2005	350.0	6.3	169.3	4.5	2,130.5	5.9	
2006	369.5	4.9	175.2	3.7	2,195.5	4.8	
2007	378.3	4.3	182.9	3.3	2,266.3	4.2	
2008	394.2	4.4	190.9	3.3	2,314.3	4.6	
2008 Jan	375.8	4.5	186.2	3.0	2,286.5	4.1	
2008 Feb	378.0	5.0	185.0	3.3	2,278.9	4.2	
2008 Mar	380.4	5.2	186.8	3.2	2,284.9	4.4	
2008 Apr	386.9	4.6	190.0	2.8	2,295.0	4.4	
2008 May	391.4	4.3	193.8	2.7	2,313.3	4.5	
2008 Jun	395.9	3.9	195.0	2.8	2,329.8	4.4	
2008 Jul	401.8	3.8	195.1	3.3	2,345.0	4.5	
2008 Aug	403.3	3.8	194.0	3.7	2,350.7	4.6	
2008 Sep	403.3	4.1	192.8	3.7	2,337.7	4.7	
2008 Oct	401.0	4.3	191.8	3.8	2,325.3	4.7	
2008 Nov	399.0	4.5	191.2	3.4	2,312.5	4.7	
2008 Dec	397.2	4.5	189.2	3.6	2,304.8	4.9	
2009 Jan	390.9	5.1	184.9	3.9	2,278.4	5.5	
2009 Feb	384.4	5.9	181.3	4.9	2,251.1	6.3	
2009 Mar	380.7	6.8	178.8	5.5	2,227.5	7.2	
2009 Apr	381.0	6.9	178.9	6.0	2,229.0	7.6	
2009 May	382.5	6.9	180.1	6.2	2,243.1	7.8	
2009 Jun	383.5	6.6	182.4	6.2	2,264.6	7.8	
2009 Jul	383.1	6.4	183.4	6.1	2,275.9	7.8	
2009 Aug	382.4	6.6	183.4	6.1	2,280.5	8.0	
2009 Sep	376.9	7.1	181.1	6.6	2,275.8	7.8	
2009 Oct							
2009 Nov							
2009 Dec							
Average:							
ytd average	Jan-Sep08	393.2	4.4	191.5	3.2	2,317.5	4.5
based on	Jan-Sep09	380.2	6.8	180.8	6.1	2,256.0	7.6
actual data	% Change	-3.3		-5.6		-2.7	



Source: Labour Force Survey, Statistics Canada. Sub-provincial regions are development regions or census metropolitan areas.

<b>4 Retail Sales - based on Statistics Canada monthly survey</b>						
Year or Year/Quarter	\$ millions of retail sales			Percent change on year ago		
	B.C.	Greater Vancouver	Rest of Province	B.C.	Greater Vancouver	Rest of Province
2004	47,216.6	22,243.6	24,973.0	6.3	n/a	n/a
2005	49,286.3	22,702.6	26,583.7	4.4	2.1	6.4
Annual data 2006	52,837.1	24,110.2	28,726.9	7.2	6.2	8.1
2007	56,365.4	25,342.8	31,022.6	6.7	5.1	8.0
2008	56,562.4	25,290.5	31,271.8	0.3	-0.2	0.8
Quarterly data 08 2	14,749.1	6,626.3	8,122.8	1.6	1.6	1.6
08 3	14,923.3	6,466.4	8,456.9	1.5	0.7	2.2
08 4	14,053.2	6,340.4	7,712.7	-5.6	-6.2	-5.2
09 1	11,485.1	5,274.5	6,210.5	-10.5	-10.0	-11.0
09 2	13,550.1	6,150.0	7,400.1	-8.1	-7.2	-8.9



Source: B.C. & GVRD data - Statistics Canada, monthly survey (CANSIM 080-0015).



**Alberni-Clayoquot  
Regional District**

**Was 5** **Manufacturing Principal Statistics - Search at [www.made-in-bc.ca](http://www.made-in-bc.ca) for local firms, products and more**

This table is discontinued. Sub-provincial manufacturing principal statistics are no longer being produced.

5		Tourism Room Revenue (\$ Thousands)					Tourism Room Revenue Index 2003=100	
Year	Total/YTD	Q1	Q2	Q3	Q4	Index		
						B.C.	Region	
Alberni-Clayoquot Regional District	2005	42,396.3	5,613.9	9,745.3	20,515.7	6,521.3		
	2006	43,737.2	6,053.2	10,211.8	20,721.8	6,750.3		
	2007	49,712.9	6,160.0	11,973.1	23,760.3	7,819.6		
	2008	48,640.8	6,409.2	11,654.9	23,311.4	7,265.2		
	2009	16,750.1	5,623.5	11,126.6				
British Columbia	2005	1,681,563.6	351,779.6	404,639.8	610,273.7	314,870.6		
	2006	1,807,608.7	366,165.1	450,747.7	652,476.4	338,219.5		
	2007	1,963,958.7	412,949.3	488,493.9	697,545.2	364,970.3		
	2008	1,977,424.9	435,223.9	503,276.7	687,708.3	351,215.9		
	2009	802,329.6	378,880.1	423,449.6				
2008 Room Revenue by Accommodation Type (\$Thousands   %Share)								
TOTAL	48,641.0	100.0%						
Hotels	11,810.0	24.3%						
Motels	4,569.0	9.4%						
*Vacation Rentals	17,295.0	35.6%						
*City of Port Alberni	4,612.0	9.5%						
*District Municipality of	36,804.0	75.7%						
*District Municipality of	5,985.0	12.3%						

asterisk before location denotes sub-area detail

Source: Hotel tax database maintained by Consumer Taxation Branch, Ministry of Small Business and Revenue  
Published in detail monthly by BC Stats.

All room revenue data has been revised. For an explanation, see our periodical called *Tourism Sector Monitor*, April and May issues of 2009.  
Link to explanation of changes: [http://www.bcstats.gov.bc.ca/pubs/pr\\_tour.asp](http://www.bcstats.gov.bc.ca/pubs/pr_tour.asp)

6		Building Permits						Total Permits Index 2003=100	
Year	Total Building Permits	Non Residential				Residential		Index	
		Total Non Res.	Industrial	Commercial	Institutional & Gov't	Units	B.C.	Region	
		<-- \$ Millions -->							
2001	13.0	6.0	0.4	3.6	2.0	7.0	39		
2002	21.5	10.0	0.6	8.1	1.3	11.4	88		
2003	21.9	9.2	1.0	7.7	0.4	12.7	83		
2004	48.4	27.2	0.9	22.6	3.7	21.2	144		
2005	43.5	15.9	1.2	7.8	6.9	27.6	132		
2006	72.6	28.9	1.1	27.4	0.4	43.7	251		
2007	46.7	14.4	0.9	11.2	2.4	32.3	127		
2008	45.6	11.5	1.0	2.6	7.9	34.1	121		
Jan-Aug 08	30.2	2.7	0.5	1.3	1.0	27.5	98		
Jan-Aug 09	27.8	9.7	0.9	8.1	0.7	18.2	60		

Not all projects require a building permit, and not all municipalities & regions report. Latest month preliminary, previous month is revised.  
Source: Statistics Canada (data collected from municipal and Regional District offices).

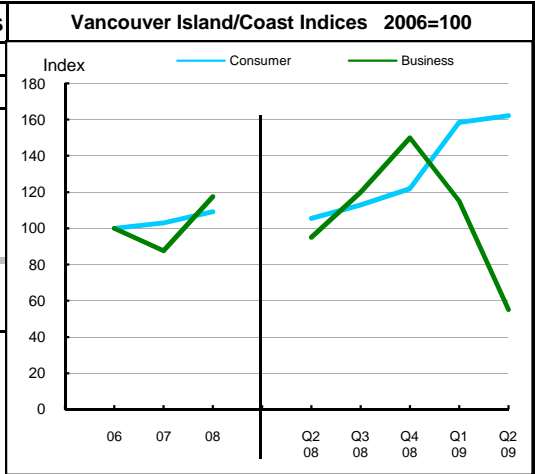


**Alberni-Clayoquot  
Regional District**

7 Business and Consumer Bankruptcies, Quarterly - NEW series						
Year	Vancouver Island/Coast		British Columbia			
	Consumer	Business	Consumer	Business	Consumer	Business
2006	1,368	80	7,020	585		
2007	1,410	70	6,651	470		
2008	1,495	94	7,293	454		
2009						
2010						
YTD-08	692	40	3,335	202		
YTD-09	1,097	34	5,400	232		

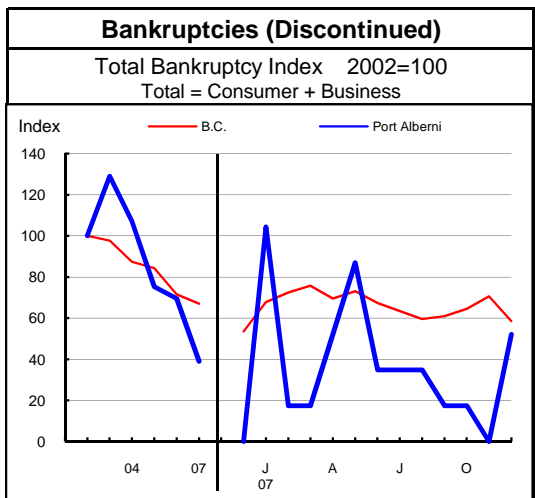
Source: Office of the Superintendent of Bankruptcy, Government of Canada  
Total bankruptcy index includes business and consumer bankruptcies.

Note: Bankruptcy is not a good measure of business failure. Most firms that fail wind down operations and withdraw from business.



8 Incorporations			
Year	Incorporations	Incorporations Index 2003=100	
		Index	
2001	57		
2002	43		
2003	48		
2004	64		
2005	85		
2006	81		
2007	100		
2008	79		
Jan-Sep 08	65		
Jan-Sep 09	43		

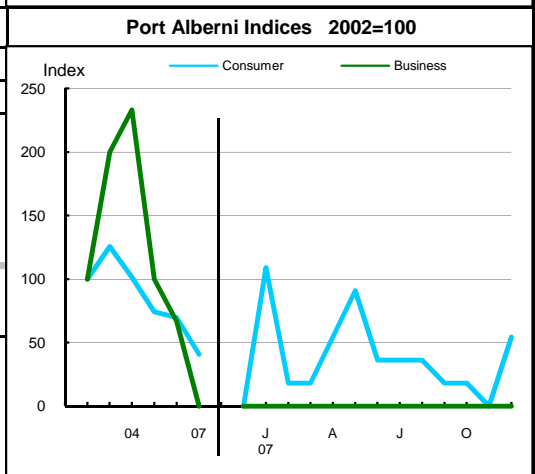
Source: Incorporations - (B.C.) Ministry of Finance



9 Business and Consumer Bankruptcies (Discontinued)						
Year	Port Alberni		Non-urban B.C.		B.C.	
	Consumer	Business	Consumer	Business	Consumer	Business
2003	83	6	1,186	173	9,385	1,002
2004	67	7	1,139	175	8,378	922
2005	49	3	1,097	155	8,173	786
2006	46	2	856	106	7,021	587
2007	27	0	827	75	6,651	470
Jan-Dec 06	46	2	856	106	7,022	587
Jan-Dec 07	27	0	827	75	6,651	470

Source: Office of the Superintendent of Bankruptcy, Government of Canada  
Total bankruptcy index includes business and consumer bankruptcies.

Note: Bankruptcy is not a good measure of business failure. Most firms that fail wind down operations and withdraw from business.





Alberni-Clayoquot  
Regional District

Dependence on the Safety Net

10 Basic Income Assistance (Basic Income Assistance Recipients in Subject Group as a percent of Reference Group)							11 Employment Insurance (was UI) (EI beneficiaries as a percent of Reference Group)									
Subject Group (receiving benefits)		All (0-64)	Children <19 yrs in Families	Young Adults (19-24)	'Mid' Group (25-54)	Single Parent Women	Working Age (19-64)	Young Adults (19-24)	'Mid' Group (25-54)	'Older' Workers (55-64)	Note Older Data					
Reference Group		Total Pop. 0-64	Total Pop. <19	Total Pop. 19-24	Total Pop. 25-54	Tot. Female 19-64	Total Pop. 19-64	Total Pop. 19-24	Total Pop. 25-54	Total Pop. 55-64						
Alberni-Clayoquot Regional District	Sep '07	3.5	5.3	4.5	3.3	1.5	4.5	5.9	5.2	2.1	Mar '07					
	Dec '07	3.6	5.3	4.5	3.6	0.9	2.0	2.0	2.3	1.0	Jun '07					
	Mar '08	4.0	5.7	4.4	4.2	0.9	2.7	1.7	3.2	1.6	Sep '07					
	Jun '08	3.9	5.3	5.1	4.1	0.9	4.3	4.3	5.0	2.3	Dec '07					
	Sep '08	3.9	5.7	5.3	3.9	0.9	4.7	4.9	5.4	2.5	Mar '08					
	Dec '08	4.2	5.8	6.0	4.2	1.6	4.5	5.0	5.1	2.7	Jun '08					
	Mar '09	4.8	6.5	6.8	4.9	1.6	2.2	2.1	2.6	1.5	Sep '08					
	Jun '09	5.3	7.3	7.8	5.3	1.8	4.9	4.8	5.6	3.0	Dec '08					
	Sep '09	5.3	8.2	7.3	5.0	2.0	7.9	7.8	8.9	5.0	Mar '09					
Duration of Dependence on Income Assistance (As of September 2009)		All* Income Assistance Recipients as % of Total Pop 0-64: Region Compared to B.C.					EI Beneficiaries Aged 19-64 as % of Working Age Population									
Region		Percent					Percent									
B.C.		Region					B.C.					Region				
Total Number of Recipients	1,285	72,592														
Percent Distribution by Duration																
<1 Year	62.7	65.3														
1-2 Years	19.4	18.2														
>2 Years	17.9	16.4														
Source: Ministry of Children and Family Development administrative files and BC Stats population estimates. These figures include only a subset of those receiving income assistance. Excluded are those on Continuous Assistance (disabled or with persistent multiple barriers to employment, children in the home of a relative, and OAS/seniors. A recipient is defined as 'each person living in a family or living alone that is receiving basic income assistance'. Data does not include Aboriginal people living on Reserve. Note: '-' Data too small to release.							Source: Ministry of Housing and Social Development and BC Stats population estimates.									
12 Dependence on Basic Income Assistance and/or Employment Insurance (Basic Income Assistance Recipients + Employment Insurance Recipients in Subject Group as a percent of Reference Group)																
Subject Group (receiving assistance)		All (19-64)	Young Adults (19-24)	'Mid' Group (25-54)	'Older' Group (55-64)	All 'Safety Net' Recipients as % of Total Pop 19-64: Region Compared to B.C.										
Reference Group		Total Pop. 19-64	Total Pop. 19-24	Total Pop. 25-54	Total Pop. 55-64	Percent										
Alberni-Clayoquot Regional District	Mar '07	7.2	10.0	8.3	2.7											
	Jun '07	4.9	6.5	5.7	1.8											
	Sep '07	5.5	6.1	6.5	2.4											
	Dec '07	7.2	8.6	8.5	3.2											
	Mar '08	7.9	9.1	9.4	3.5											
	Jun '08	7.8	10.0	9.1	3.4											
	Sep '08	5.5	7.2	6.3	2.4											
	Dec '08	8.3	10.4	9.5	3.9											
	Mar '09	11.9	14.4	13.6	6.2											

Note: The EI figures reported above no longer include persons claiming parental/adoption leave. Previous issues of this table did include them.



**Alberni-Clayoquot  
Regional District**

**13 Demographics**

This region has generally been a net loser of migrants. Overall, Alberni-Clayoquot has seen very little growth over the last twenty years. However, its structure has undergone substantial change as the population has aged relatively quickly. This region added 11.3 years to its median age since the mid 1980s, compared to a provincial gain of only 7.2 years. A year and a half younger than the B.C. population in 1986, by 2007 this region's median age was about 2.5 years older. Fertility rates have been variable over the last two decades, but show an overall downward trend. However, total fertility rates remain higher than the corresponding provincial rates. Although it has decreased over time, higher fertility means that child dependency in this region continues to be higher than in the province as a whole. Elderly dependency ratios have been on the rise, and became higher than the corresponding provincial ratios by the late 1990s. The sex ratio for this region is weighted in favour of males, in contrast to the province as a whole, which has more females than males. This is likely due to the nature of the economy and the dependence on resource-based employment. The number of births barely outnumbers deaths and natural increase now makes a minimal contribution to population growth. Patterns of population change are largely determined by recent movements of people in and out of the region. In a reversal of the net population losses of the late 1990s, this region has experienced some minimal growth over the last five years, mainly due to some small net migration inflows.

**14 Projection**

It is projected that net migration outflows will be the norm in this region for the short-term, due to constraints in the resource sectors. Although there are plans to further develop the tourist industry and to attract more retirees to the region, the number of jobs in the service sector supported by these activities is less than those supported by the forest sector. This means that it will take more than one tourism job to achieve the same spin-off benefits of one forest job. Net migration will become positive after the first decades or so, but increasingly negative natural increase will offset these net inflows for the most part. Overall, this region will likely see a population decline in the order of 1,300 people over the next 30 years. The population will continue to age and, by 2036, this region will likely have over 7.5 dependents for every 10 people of working age, and most of these dependents will be seniors.

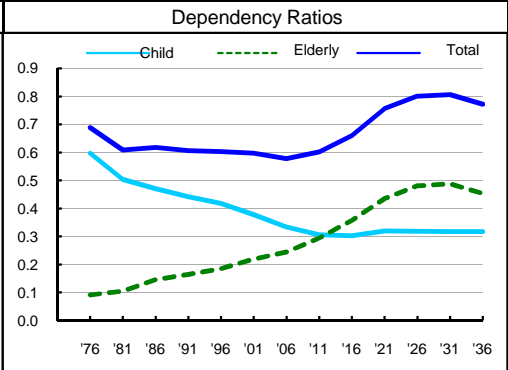
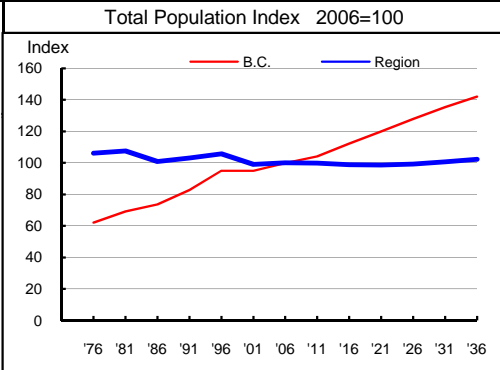
**15 Selected Demographic Characteristics**

Year	Population by age group, Thousands of persons							Households (,000)	Dependency Ratios			Year
	0-4	5-17	18-24	25-44	45-64	65+	All Ages		Child	Elderly	Total	
1976	2.8	8.9	4.6	9.1	5.8	1.8	33.0	10.0	0.598	0.091	0.689	1976
1981	2.7	7.8	4.7	10.0	6.0	2.2	33.4	11.1	0.504	0.106	0.609	1981
1986	2.4	6.7	3.3	9.8	6.2	2.8	31.3	11.4	0.471	0.147	0.618	1986
1991	2.4	6.5	3.1	10.2	6.7	3.3	32.1	11.9	0.442	0.164	0.606	1991
1996	2.2	6.4	3.0	9.9	7.6	3.8	32.8	12.7	0.418	0.185	0.603	1996
2001	1.6	5.7	2.6	8.2	8.5	4.2	30.8	12.5	0.378	0.220	0.598	2001
2006	1.5	5.0	2.5	7.5	9.7	4.8	31.1	12.9	0.334	0.244	0.578	2006
2011	1.7	4.3	2.8	6.9	9.6	5.7	31.0	13.2	0.307	0.295	0.601	2011
2016	1.5	4.1	2.4	7.0	9.0	6.6	30.7	13.4	0.303	0.358	0.660	2016
2021	1.5	4.1	2.1	7.2	8.2	7.6	30.7	13.5	0.320	0.435	0.755	2021
2026	1.5	4.0	2.3	7.4	7.4	8.2	30.8	13.8	0.319	0.480	0.800	2026
2031	1.6	3.9	2.5	7.9	6.9	8.4	31.3	14.1	0.318	0.488	0.806	2031
2036	1.7	4.1	2.4	8.5	7.1	8.1	31.8	14.3	0.318	0.454	0.772	2036

Age groups reflect pre-school, school, advanced education, family formation, mature workers and retired.

Child Dependency:  
(ages 0-17) / (ages 18-64)

Elderly Dependency:  
(ages 65+) / (ages 18-64)



Source: Population data are Projection P-34, run in Summer 2009. Figures are adjusted for Census undercount and are for July 1st of stated year.  
Note: Demographics and Projection notes in Tables 13 and 14 are from Projection P-33, run the Summer 2008.