



**Comox-Strathcona
Regional District**

1	General Economy
<p>Municipalities in Regional District: Campbell River, Comox, Courtenay, Cumberland, Gold River, Sayward, Tahsis, Zeballos</p> <p>Agriculture, fisheries, forestry and mining activities contribute to the local economy. The growing urban centres in the region continue to diversify their economies towards business and services, which support their retiree communities. Several condominium and retirement living project expansions are located within the area. The area has many wood processing facilities, some of which have announced closures or output reductions. The Annual Allowable cuts have recently been reduced for the timber supply areas in this region. Mining is also an important local industry. There are coal, and copper and zinc mines operating in the area. Proposed mines may open in the future. Condominium and resort projects are proposed and under construction. In Campbell River a cruise ship facility opened recently. The area's traditional fisheries industry continues to experience lower employment as the transition from wild to fish farming continues. The area has cattle, livestock and dairy operations, orchards, vegetable farming and horse ranches, as well as shell fish and fin fish farming operations.</p>	

The notes above and later in this report on Demographics and Projections are the basis for BC Stats population projection P33 completed in the Summer of 2008. The projections are updated annually to reflect known demographic shifts and economic conditions. Full projections with "Components of Change", "Special Age Groups", "5 Year Age Cohorts by Sex", and accompanying notes are available for B.C., the 8 development regions, the 28 regional districts, the 79 local health areas (LHAs) and a number of "special areas" of local interest which are not part of a province-wide geocoding system. Individual areas, including age and sex detail, are modestly priced. Users requiring only total population projections are able to self serve for free from our population projection page: www.bcstats.gov.bc.ca/data/pop/pop/popproj.asp The full B.C. level projection is available free on the above page.

2	Economic Structure - Number of Business Locations, by Sector, by Employment Size, December 2008									
NAICS Code	Industry Sector based on NAICS Canada (North American Industrial Classification System)	Comox-Strathcona							British Columbia	
		Locations With No Employees	Firms with Employees						With Employees	
			Less Than 20	20 to 49	50 to 199	200 Plus	All Sizes with Emp.	Percent of Total	Percent of Total	All Sizes
	Total, All Industries	4,413	3,910	303	98	24	4,335	100.0%	100.0%	175,003
11	Agric., Forestry, Fishing & Hunt	571	351	27	14	4	396	9.1%	4.0%	7,009
21	Mining & Oil & Gas Extract.	9	7	1	1	1	10	0.2%	0.6%	1,071
22	Utilities	2	5	0	0	0	5	0.1%	0.1%	203
23	Construction	705	604	19	7	0	630	14.5%	12.1%	21,108
31	Manufacturing (31-33)	145	140	13	5	4	162	3.7%	4.5%	7,879
41	Wholesale Trade	135	132	7	2	0	141	3.3%	5.9%	10,359
44	Retail Trade (44-45)	231	521	49	19	4	593	13.7%	11.9%	20,742
48	Transp. & Warehousing (48-49)	214	167	16	3	0	186	4.3%	4.4%	7,734
51	Information & Cultural Indust.	39	18	6	0	0	24	0.6%	1.4%	2,412
52	Finance & Insurance	251	121	20	2	0	143	3.3%	3.8%	6,564
53	Real Estate & Rental & Leasing	653	160	4	3	0	167	3.9%	4.5%	7,835
54	Profes'nl, Scientif. & Tech. Srv	469	364	8	0	0	372	8.6%	11.0%	19,278
55	Mgmt. of Companies & Enter.	255	27	4	0	0	31	0.7%	1.6%	2,818
56	Admin. & Sup'rt, Waste Mgmt.	163	184	9	3	0	196	4.5%	4.9%	8,513
61	Educational Services	41	47	4	1	3	55	1.3%	1.4%	2,363
62	Health Care & Social Assistance	109	357	26	6	3	392	9.0%	8.4%	14,773
71	Arts, Entertainment & Recreation	90	81	3	2	1	87	2.0%	1.6%	2,873
72	Accom. & Food Services	131	232	68	21	0	321	7.4%	6.7%	11,639
81	Other Serv's (ex. Public Admin.)	199	378	6	3	1	388	9.0%	10.9%	19,095
91	Public Administration	1	14	13	6	3	36	0.8%	0.4%	735

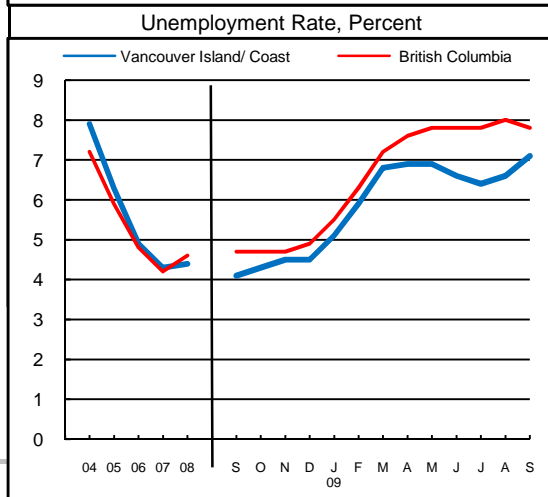
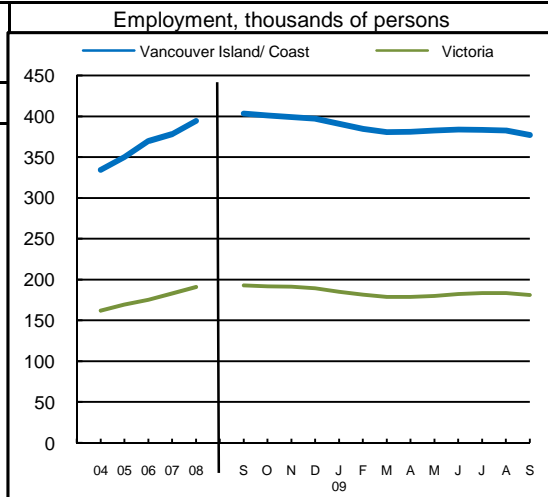
Source: Statistics Canada, Business Register Division. Note: This table formerly identified **business establishments**.



**Comox-Strathcona
Regional District**

3 Employment and Unemployment Rate, monthly data are 3-month moving average, actual, ending in stated month

	Vancouver Island/ Coast		Victoria		British Columbia		
	Emp. ('000)	Unemp. %	Emp. ('000)	Unemp. %	Emp. ('000)	Unemp. %	
1999	330.0	7.9	155.3	6.6	1,894.4	8.3	
2000	327.4	7.8	155.3	6.7	1,931.3	7.1	
2001	307.3	9.2	150.8	6.3	1,921.6	7.7	
2002	317.4	8.7	155.7	7.0	1,965.0	8.5	
2003	319.1	8.6	158.7	6.2	2,014.7	8.0	
2004	334.2	7.9	162.0	5.3	2,062.7	7.2	
2005	350.0	6.3	169.3	4.5	2,130.5	5.9	
2006	369.5	4.9	175.2	3.7	2,195.5	4.8	
2007	378.3	4.3	182.9	3.3	2,266.3	4.2	
2008	394.2	4.4	190.9	3.3	2,314.3	4.6	
2008 Jan	375.8	4.5	186.2	3.0	2,286.5	4.1	
2008 Feb	378.0	5.0	185.0	3.3	2,278.9	4.2	
2008 Mar	380.4	5.2	186.8	3.2	2,284.9	4.4	
2008 Apr	386.9	4.6	190.0	2.8	2,295.0	4.4	
2008 May	391.4	4.3	193.8	2.7	2,313.3	4.5	
2008 Jun	395.9	3.9	195.0	2.8	2,329.8	4.4	
2008 Jul	401.8	3.8	195.1	3.3	2,345.0	4.5	
2008 Aug	403.3	3.8	194.0	3.7	2,350.7	4.6	
2008 Sep	403.3	4.1	192.8	3.7	2,337.7	4.7	
2008 Oct	401.0	4.3	191.8	3.8	2,325.3	4.7	
2008 Nov	399.0	4.5	191.2	3.4	2,312.5	4.7	
2008 Dec	397.2	4.5	189.2	3.6	2,304.8	4.9	
2009 Jan	390.9	5.1	184.9	3.9	2,278.4	5.5	
2009 Feb	384.4	5.9	181.3	4.9	2,251.1	6.3	
2009 Mar	380.7	6.8	178.8	5.5	2,227.5	7.2	
2009 Apr	381.0	6.9	178.9	6.0	2,229.0	7.6	
2009 May	382.5	6.9	180.1	6.2	2,243.1	7.8	
2009 Jun	383.5	6.6	182.4	6.2	2,264.6	7.8	
2009 Jul	383.1	6.4	183.4	6.1	2,275.9	7.8	
2009 Aug	382.4	6.6	183.4	6.1	2,280.5	8.0	
2009 Sep	376.9	7.1	181.1	6.6	2,275.8	7.8	
2009 Oct							
2009 Nov							
2009 Dec							
Average:							
ytd average	Jan-Sep08	393.2	4.4	191.5	3.2	2,317.5	4.5
based on	Jan-Sep09	380.2	6.8	180.8	6.1	2,256.0	7.6
actual data	% Change	-3.3		-5.6		-2.7	

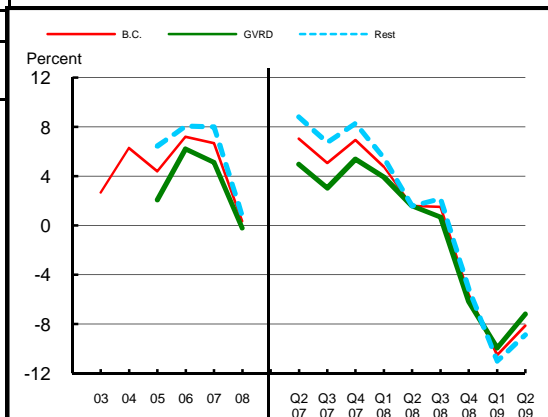


Source: Labour Force Survey, Statistics Canada. Sub-provincial regions are development regions or census metropolitan areas.

4 Retail Sales - based on Statistics Canada monthly survey

Year or Year/Quarter	\$ millions of retail sales			Percent change on year ago		
	B.C.	Greater Vancouver	Rest of Province	B.C.	Greater Vancouver	Rest of Province
2004	47,216.6	22,243.6	24,973.0	6.3	n/a	n/a
2005	49,286.3	22,702.6	26,583.7	4.4	2.1	6.4
Annual data 2006	52,837.1	24,110.2	28,726.9	7.2	6.2	8.1
2007	56,365.4	25,342.8	31,022.6	6.7	5.1	8.0
2008	56,562.4	25,290.5	31,271.8	0.3	-0.2	0.8
Quarterly data 08 2	14,749.1	6,626.3	8,122.8	1.6	1.6	1.6
08 3	14,923.3	6,466.4	8,456.9	1.5	0.7	2.2
08 4	14,053.2	6,340.4	7,712.7	-5.6	-6.2	-5.2
09 1	11,485.1	5,274.5	6,210.5	-10.5	-10.0	-11.0
09 2	13,550.1	6,150.0	7,400.1	-8.1	-7.2	-8.9

Percent Growth Over Same Period in Previous Year



Source: B.C. & GVRD data - Statistics Canada, monthly survey (CANSIM 080-0015).



**Comox-Strathcona
Regional District**

Was 5 **Manufacturing Principal Statistics - Search at www.made-in-bc.ca for local firms, products and more**

This table is discontinued. Sub-provincial manufacturing principal statistics are no longer being produced.

5		Tourism Room Revenue (\$ Thousands)					Tourism Room Revenue Index 2003=100	
	Year	Total/YTD	Q1	Q2	Q3	Q4	Index	
	Comox-Strathcona Regional District	2005	31,837.3	4,157.5	8,257.2	14,283.5	5,139.1	
2006		35,766.9	5,454.4	8,682.8	15,690.9	5,938.8		
2007		39,798.5	6,593.5	10,034.6	16,778.8	6,391.6		
2008		37,957.6	6,770.7	9,512.0	15,971.5	5,703.5		
2009		13,068.4	5,317.7	7,750.7	0.0	0.0		
British Columbia	2005	1,681,563.6	351,779.6	404,639.8	610,273.7	314,870.6		
	2006	1,807,608.7	366,165.1	450,747.7	652,476.4	338,219.5		
	2007	1,963,958.7	412,949.3	488,493.9	697,545.2	364,970.3		
	2008	1,977,424.9	435,223.9	503,276.7	687,708.3	351,215.9		
	2009	802,329.6	378,880.1	423,449.6				
2008 Room Revenue by Accommodation Type (\$Thousands %Share)								
TOTAL	37,958.0	100.0%						
Fishing lodges	6,469.0	17.0%						
Hotels	11,211.0	29.5%						
Motels	8,564.0	22.6%						
Vacation Rentals	4,701.0	12.4%						
*Comox Valley	15,218.0	40.1%						
*Campbell River	13,182.0	34.7%						

asterisk before location denotes sub-area detail

Source: Hotel tax database maintained by Consumer Taxation Branch, Ministry of Small Business and Revenue
Published in detail monthly by BC Stats.

All room revenue data has been revised. For an explanation, see our periodical called *Tourism Sector Monitor*, April and May issues of 2009.
Link to explanation of changes: http://www.bcstats.gov.bc.ca/pubs/pr_tour.asp

6		Building Permits						Total Permits Index 2003=100	
Year	Total Building Permits	Non Residential				Residential		Index	
		Total Non Res.	Industrial	Commercial	Institutional & Gov't	Units			
		<-- \$ Millions -->							
2001	69.7	35.6	7.6	14.9	13.0	34.1	232		
2002	82.4	22.5	2.5	16.0	3.9	59.9	458		
2003	116.6	33.5	6.8	20.8	5.9	83.1	545		
2004	158.6	26.6	4.0	16.3	6.3	132.0	854		
2005	221.1	26.7	2.6	16.4	7.6	194.4	1,169		
2006	304.5	53.9	4.9	36.1	12.9	250.6	1,190		
2007	279.8	71.6	6.3	35.7	29.6	208.1	938		
2008	226.6	46.9	4.1	35.9	6.9	179.8	708		
Jan-Aug 08	194.2	43.2	3.8	32.7	6.7	151.0	594		
Jan-Aug 09	0.0	0.0	0.0	0.0	0.0	0.0	0		

Not all projects require a building permit, and not all municipalities & regions report. Latest month preliminary, previous month is revised.
Source: Statistics Canada (data collected from municipal and Regional District offices).

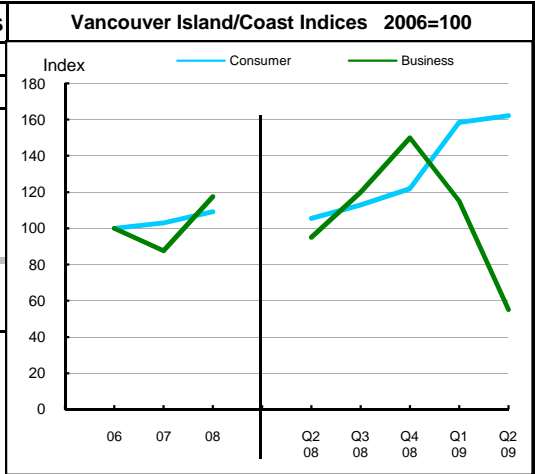


**Comox-Strathcona
Regional District**

7 Business and Consumer Bankruptcies, Quarterly - NEW series						
Year	Vancouver Island/Coast		British Columbia			
	Consumer	Business	Consumer	Business	Consumer	Business
2006	1,368	80	7,020	585		
2007	1,410	70	6,651	470		
2008	1,495	94	7,293	454		
2009						
2010						
YTD-08	692	40	3,335	202		
YTD-09	1,097	34	5,400	232		

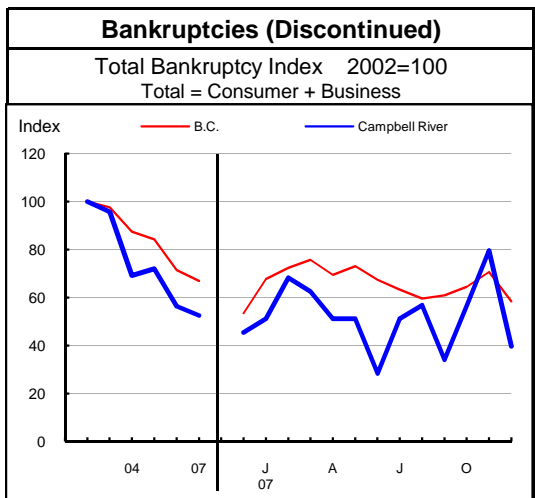
Source: Office of the Superintendent of Bankruptcy, Government of Canada
Total bankruptcy index includes business and consumer bankruptcies.

Note: Bankruptcy is not a good measure of business failure. Most firms that fail wind down operations and withdraw from business.



8 Incorporations			
Year	Incorporations	Incorporations Index 2003=100	
		B.C.	Region
2001	261		
2002	302		
2003	308		
2004	304		
2005	365		
2006	440		
2007	452		
2008	445		
Jan-Sep 08	373		
Jan-Sep 09	237		

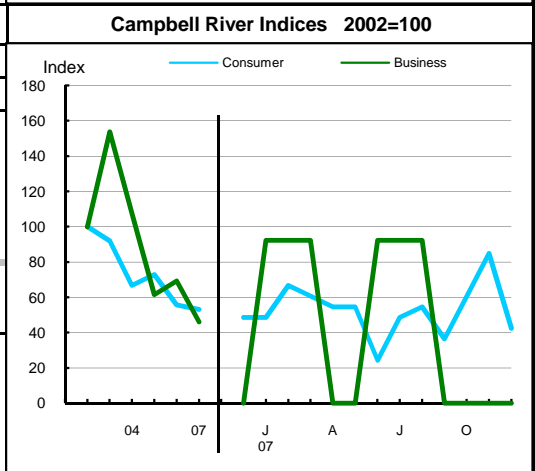
Source: Incorporations - (B.C.) Ministry of Finance



9 Business and Consumer Bankruptcies (Discontinued)						
Year	Campbell River		Courtenay		B.C.	
	Consumer	Business	Consumer	Business	Consumer	Business
2003	182	20	148	13	9,385	1,002
2004	132	14	146	10	8,378	922
2005	144	8	130	8	8,173	786
2006	110	9	124	3	7,021	587
2007	105	6	107	3	6,651	470
Jan-Dec 06	110	9	124	3	7,022	587
Jan-Dec 07	105	6	107	3	6,651	470

Source: Office of the Superintendent of Bankruptcy, Government of Canada
Total bankruptcy index includes business and consumer bankruptcies.

Note: Bankruptcy is not a good measure of business failure. Most firms that fail wind down operations and withdraw from business.





**Comox-Strathcona
Regional District**

Dependence on the Safety Net

10 Basic Income Assistance (Basic Income Assistance Recipients in Subject Group as a percent of Reference Group)							11 Employment Insurance (was UI) (EI beneficiaries as a percent of Reference Group)									
Subject Group (receiving benefits)		All (0-64)	Children <19 yrs in Families	Young Adults (19-24)	'Mid' Group (25-54)	Single Parent Women	Working Age (19-64)	Young Adults (19-24)	'Mid' Group (25-54)	'Older' Workers (55-64)	Note Older Data					
Reference Group		Total Pop. 0-64	Total Pop. <19	Total Pop. 19-24	Total Pop. 25-54	Tot. Female 19-64	Total Pop. 19-64	Total Pop. 19-24	Total Pop. 25-54	Total Pop. 55-64						
Comox-Strathcona Regional District	Sep '07	1.5	2.4	1.9	1.4	0.8	2.7	2.8	2.9	2.0	Mar '07					
	Dec '07	1.6	2.6	2.1	1.5	1.5	1.7	1.8	1.8	1.2	Jun '07					
	Mar '08	1.7	2.5	2.0	1.7	1.5	1.8	1.5	2.0	1.3	Sep '07					
	Jun '08	1.7	2.7	2.0	1.6	1.4	3.0	3.3	3.3	2.3	Dec '07					
	Sep '08	1.7	2.6	1.9	1.7	1.6	2.7	3.0	2.9	2.1	Mar '08					
	Dec '08	1.9	2.8	2.4	1.9	0.8	3.7	4.4	3.9	2.8	Jun '08					
	Mar '09	2.4	3.3	3.3	2.4	1.0	1.9	2.0	2.1	1.3	Sep '08					
	Jun '09	2.4	3.4	3.4	2.5	1.0	4.1	4.8	4.4	2.9	Dec '08					
	Sep '09	2.6	3.8	3.5	2.6	1.1	6.5	7.5	7.0	4.6	Mar '09					
Duration of Dependence on Income Assistance (As of September 2009)		All* Income Assistance Recipients as % of Total Pop 0-64: Region Compared to B.C.					EI Beneficiaries Aged 19-64 as % of Working Age Population									
Region		Percent					Percent									
B.C.		Region					B.C.					Region				
Total Number of Recipients	2,287	72,592														
Percent Distribution by Duration																
<1 Year	71.0	65.3														
1-2 Years	15.2	18.2														
>2 Years	13.8	16.4														
Source: Ministry of Children and Family Development administrative files and BC Stats population estimates. These figures include only a subset of those receiving income assistance. Excluded are those on Continuous Assistance (disabled or with persistent multiple barriers to employment, children in the home of a relative, and OAS/seniors. A recipient is defined as 'each person living in a family or living alone that is receiving basic income assistance'. Data does not include Aboriginal people living on Reserve. Note: '-' Data too small to release.							Source: Ministry of Housing and Social Development and BC Stats population estimates.									
12 Dependence on Basic Income Assistance and/or Employment Insurance (Basic Income Assistance Recipients + Employment Insurance Recipients in Subject Group as a percent of Reference Group)																
Subject Group (receiving assistance)		All (19-64)	Young Adults (19-24)	'Mid' Group (25-54)	'Older' Group (55-64)	All 'Safety Net' Recipients as % of Total Pop 19-64: Region Compared to B.C.										
Reference Group		Total Pop. 19-64	Total Pop. 19-24	Total Pop. 25-54	Total Pop. 55-64	Percent										
Comox-Strathcona Regional District	Mar '07	4.2	5.2	4.7	2.4											
	Jun '07	2.9	3.7	3.4	1.4											
	Sep '07	2.9	3.3	3.4	1.6											
	Dec '07	4.3	5.3	4.8	2.6											
	Mar '08	4.0	4.8	4.5	2.4											
	Jun '08	5.0	6.3	5.5	3.2											
	Sep '08	3.2	3.9	3.7	1.7											
	Dec '08	5.6	7.0	6.2	3.4											
Mar '09	8.4	10.7	9.3	5.2												

Note: The EI figures reported above no longer include persons claiming parental/adoption leave. Previous issues of this table did include them.



**Comox-Strathcona
Regional District**

13 Demographics

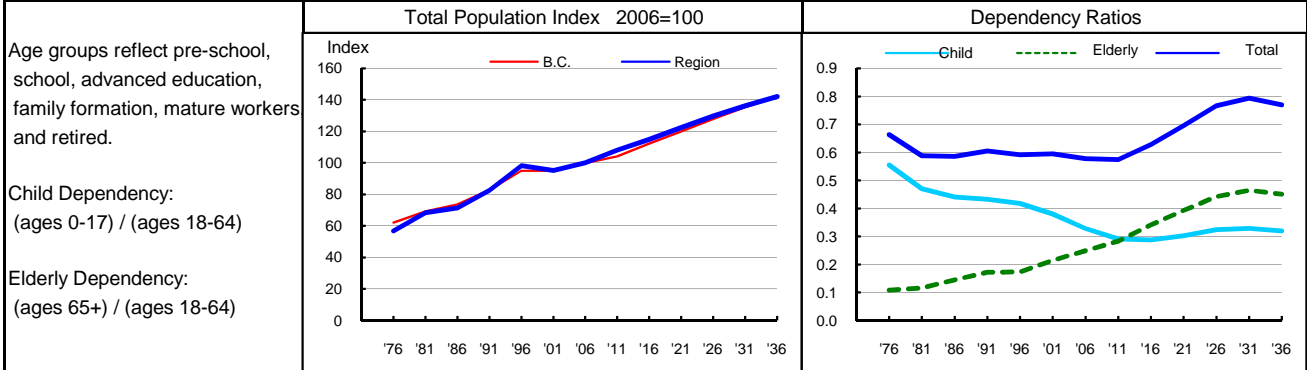
Comox-Strathcona received strong net inflows of people from the late 1980s to the mid 1990s but net outflows between 1999 and 2001 led to a net loss for a few years. Nonetheless, this region as seen strong overall growth in the last twenty years. The population has aged at a more rapid pace than the province as a whole, adding almost 12 years to its median age since 1986, compared to a provincial gain of 7.2 years. This region's population is now almost four years older than British Columbia as a whole. Fertility has shown a dramatic decline, yet remains slightly higher than provincial rates. Consistent with decreasing fertility and an ageing population, child dependency ratios have been dropping while the ratio of elderly people (aged 65 and older) to working ages (aged 18 to 64) has been on the rise. The dependence on resource industries is likely the reason for the sex ratio bias in favour of males in this region in the past, since most of these industries tend to have male-dominated employment. However there are now more females than males, as the population ages and service sector jobs expand. Natural increase remains generally positive, but has a diminishing impact on growth. Moderate inflows have led to strong growth in the last few years.

14 Projection

The diversity of the Courtenay and Campbell River areas should draw migrants to this region throughout the projection period. Natural increase is expected to continue to decrease, as deaths outpace births by an increasing margin, gradually reducing the population growth rate. Nonetheless, strong positive net migration should ensure that this region sees steady growth, increasing its population by about 32 percent by 2036. The population will continue to age and, by the end of the projection, this region should have almost 8 dependents for every 10 people of working age.

15 Selected Demographic Characteristics

Year	Population by age group, Thousands of persons							Households (,000)	Dependency Ratios			Year
	0-4	5-17	18-24	25-44	45-64	65+	All Ages		Child	Elderly	Total	
1976	4.6	14.9	7.5	17.1	10.6	3.8	58.5	18.4	0.555	0.108	0.664	1976
1981	5.6	15.3	9.1	22.5	12.8	5.2	70.5	24.1	0.471	0.116	0.588	1981
1986	5.7	14.8	7.5	24.7	14.3	6.7	73.7	27.7	0.441	0.145	0.586	1986
1991	6.2	16.8	6.8	28.7	17.5	9.1	85.1	32.0	0.433	0.172	0.605	1991
1996	6.5	20.1	7.9	32.5	23.2	11.1	101.3	39.4	0.418	0.174	0.592	1996
2001	4.9	18.5	7.4	27.2	27.0	13.2	98.2	40.2	0.381	0.215	0.595	2001
2006	4.6	16.8	7.6	24.2	33.5	16.3	103.1	42.0	0.328	0.249	0.577	2006
2011	5.1	15.4	10.1	24.1	36.5	20.0	111.3	47.2	0.291	0.284	0.574	2011
2016	5.7	15.2	9.4	27.3	36.1	24.8	118.5	52.4	0.287	0.341	0.628	2016
2021	6.2	16.3	8.6	30.5	35.4	29.2	126.2	56.0	0.303	0.393	0.696	2021
2026	6.5	18.0	8.4	32.8	34.4	33.4	133.6	58.9	0.324	0.442	0.766	2026
2031	6.5	19.3	9.3	34.3	34.6	36.4	140.4	61.6	0.329	0.465	0.794	2031
2036	6.6	19.9	10.3	34.0	38.5	37.3	146.5	64.3	0.320	0.451	0.770	2036



Source: Population data are Projection P-34, run in Summer 2009. Figures are adjusted for Census undercount and are for July 1st of stated year.
Note: Demographics and Projection notes in Tables 13 and 14 are from Projection P-33, run the Summer 2008.