



**Sunshine Coast
Regional District**

1	General Economy
<p>Municipalities in Regional District: Gibsons, Sechelt, Sechelt Indian Government District</p> <p>Forestry is the main economic activity for this area. The area has several wood processing facilities including lumber mills, a dry-land sorting facility for logs and a large pulp and paper mill in Port Mellon. There is also considerable employment in harvesting throughout the region. As well, its proximity to Vancouver, combined with relatively inexpensive housing, helps draw retirees and those who can work from home to the area. The area is an established tourist destination. There are shell fish and fin fish farming in this area.</p>	

The notes above and later in this report on Demographics and Projections are the basis for BC Stats population projection P33 completed in the Summer of 2008. The projections are updated annually to reflect known demographic shifts and economic conditions. Full projections with "Components of Change", "Special Age Groups", "5 Year Age Cohorts by Sex", and accompanying notes are available for B.C., the 8 development regions, the 28 regional districts, the 79 local health areas (LHAs) and a number of "special areas" of local interest which are not part of a province-wide geocoding system. Individual areas, including age and sex detail, are modestly priced. Users requiring only total population projections are able to self serve for free from our population projection page: www.bcstats.gov.bc.ca/data/pop/pop/popproj.asp The full B.C. level projection is available free on the above page.

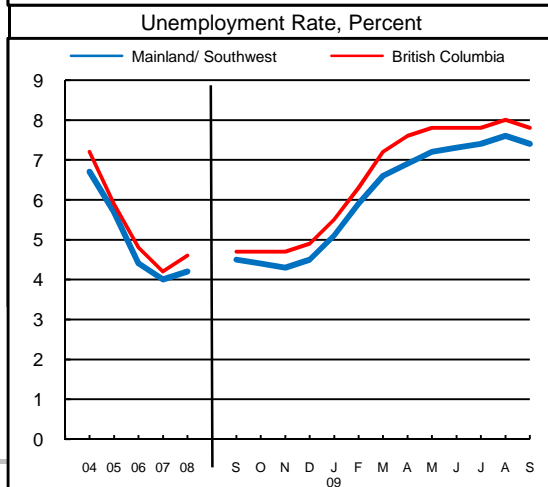
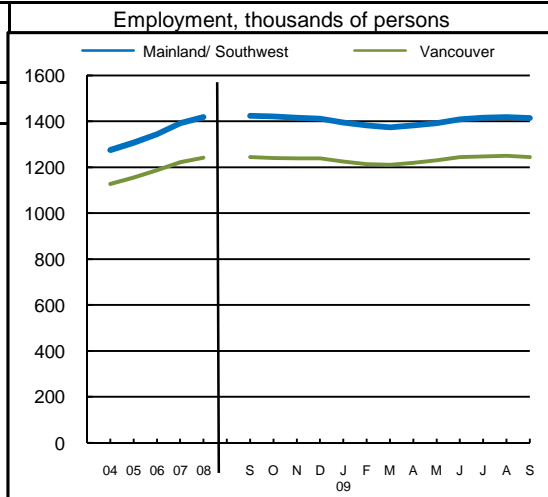
2		Economic Structure - Number of Business Locations, by Sector, by Employment Size, December 2008								
NAICS Code	Industry Sector based on NAICS Canada (North American Industrial Classification System)	Sunshine Coast							British Columbia	
		Locations With No Employees	Firms with Employees					Percent of Total	With Employees	
			Less Than 20	20 to 49	50 to 199	200 Plus	All Sizes with Emp.		Percent of Total	All Sizes
	Total, All Industries	1,554	1,099	66	18	5	1,188	100.0%	100.0%	175,003
11	Agric., Forestry, Fishing & Hunt	130	70	3	2	0	75	6.3%	4.0%	7,009
21	Mining & Oil & Gas Extract.	5	3	0	1	0	4	0.3%	0.6%	1,071
22	Utilities	4	3	0	0	0	3	0.3%	0.1%	203
23	Construction	345	171	6	0	0	177	14.9%	12.1%	21,108
31	Manufacturing (31-33)	54	39	6	1	1	47	4.0%	4.5%	7,879
41	Wholesale Trade	35	39	0	0	0	39	3.3%	5.9%	10,359
44	Retail Trade (44-45)	90	170	9	4	1	184	15.5%	11.9%	20,742
48	Transp. & Warehousing (48-49)	59	35	2	0	0	37	3.1%	4.4%	7,734
51	Information & Cultural Indust.	27	15	2	1	0	18	1.5%	1.4%	2,412
52	Finance & Insurance	70	22	2	1	0	25	2.1%	3.8%	6,564
53	Real Estate & Rental & Leasing	166	55	2	0	0	57	4.8%	4.5%	7,835
54	Profes'nl, Scientif. & Tech. Srv	229	127	2	0	0	129	10.9%	11.0%	19,278
55	Mgmt. of Companies & Enter.	62	10	1	0	0	11	0.9%	1.6%	2,818
56	Admin. & Sup'rt, Waste Mgmt.	65	57	2	0	0	59	5.0%	4.9%	8,513
61	Educational Services	11	15	0	0	1	16	1.3%	1.4%	2,363
62	Health Care & Social Assistance	32	77	7	3	1	88	7.4%	8.4%	14,773
71	Arts, Entertainment & Recreation	41	22	3	0	0	25	2.1%	1.6%	2,873
72	Accom. & Food Services	43	61	16	3	0	80	6.7%	6.7%	11,639
81	Other Serv's (ex. Public Admin.)	86	104	1	0	0	105	8.8%	10.9%	19,095
91	Public Administration	-	4	2	2	1	9	0.8%	0.4%	735

Source: Statistics Canada, Business Register Division. Note: This table formerly identified **business establishments**.



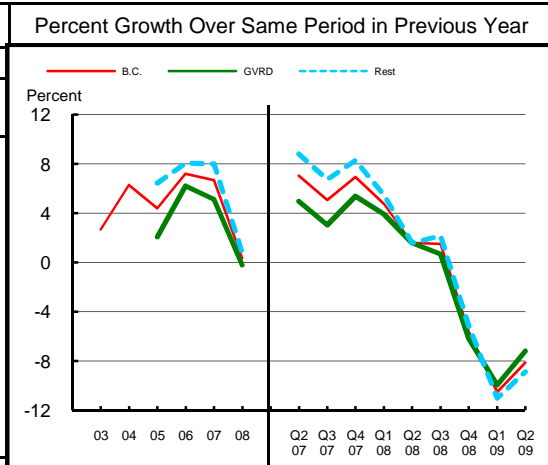
Sunshine Coast
Regional District

3 Employment and Unemployment Rate, monthly data are 3-month moving average, actual, ending in stated month							
	Mainland/ Southwest		Vancouver		British Columbia		
	Emp. ('000)	Unemp. %	Emp. ('000)	Unemp. %	Emp. ('000)	Unemp. %	
1999	1,130.1	7.7	996.0	7.7	1,894.4	8.3	
2000	1,164.6	6.1	1,032.1	5.8	1,931.3	7.1	
2001	1,175.0	6.7	1,039.1	6.6	1,921.6	7.7	
2002	1,216.7	7.7	1,072.1	7.7	1,965.0	8.5	
2003	1,251.4	7.3	1,103.5	7.3	2,014.7	8.0	
2004	1,275.3	6.7	1,127.5	6.7	2,062.7	7.2	
2005	1,307.3	5.7	1,155.7	5.7	2,130.5	5.9	
2006	1,342.7	4.4	1,187.1	4.4	2,195.5	4.8	
2007	1,392.2	4.0	1,222.7	4.0	2,266.3	4.2	
2008	1,418.3	4.2	1,241.6	4.3	2,314.3	4.6	
2008 Jan	1,417.7	3.6	1,245.2	3.7	2,286.5	4.1	
2008 Feb	1,411.1	3.7	1,239.5	3.7	2,278.9	4.2	
2008 Mar	1,412.7	3.7	1,240.4	3.8	2,284.9	4.4	
2008 Apr	1,412.8	3.9	1,238.6	3.9	2,295.0	4.4	
2008 May	1,421.3	4.1	1,241.8	4.1	2,313.3	4.5	
2008 Jun	1,425.2	4.2	1,243.8	4.3	2,329.8	4.4	
2008 Jul	1,430.2	4.4	1,249.0	4.4	2,345.0	4.5	
2008 Aug	1,433.3	4.4	1,253.4	4.5	2,350.7	4.6	
2008 Sep	1,423.7	4.5	1,243.8	4.6	2,337.7	4.7	
2008 Oct	1,420.3	4.4	1,240.6	4.5	2,325.3	4.7	
2008 Nov	1,414.9	4.3	1,238.1	4.3	2,312.5	4.7	
2008 Dec	1,411.6	4.5	1,238.6	4.4	2,304.8	4.9	
2009 Jan	1,395.0	5.1	1,225.3	4.9	2,278.4	5.5	
2009 Feb	1,381.8	5.9	1,214.1	5.6	2,251.1	6.3	
2009 Mar	1,374.3	6.6	1,210.5	6.3	2,227.5	7.2	
2009 Apr	1,382.4	6.9	1,219.9	6.7	2,229.0	7.6	
2009 May	1,392.2	7.2	1,229.8	7.0	2,243.1	7.8	
2009 Jun	1,409.1	7.3	1,243.8	7.2	2,264.6	7.8	
2009 Jul	1,415.7	7.4	1,247.5	7.3	2,275.9	7.8	
2009 Aug	1,418.6	7.6	1,249.9	7.5	2,280.5	8.0	
2009 Sep	1,413.6	7.4	1,244.8	7.3	2,275.8	7.8	
2009 Oct							
2009 Nov							
2009 Dec							
Average:							
ytd average	Jan-Sep08	1,420.6	4.2	1,242.6	4.2	2,317.5	4.5
based on	Jan-Sep09	1,397.7	7.1	1,233.0	6.9	2,256.0	7.6
actual data	% Change	-1.6		-0.8		-2.7	



Source: Labour Force Survey, Statistics Canada. Sub-provincial regions are development regions or census metropolitan areas.

4 Retail Sales - based on Statistics Canada monthly survey							
Year or Year/Quarter	\$ millions of retail sales			Percent change on year ago			
	B.C.	Greater Vancouver	Rest of Province	B.C.	Greater Vancouver	Rest of Province	
2004	47,216.6	22,243.6	24,973.0	6.3	n/a	n/a	
2005	49,286.3	22,702.6	26,583.7	4.4	2.1	6.4	
Annual data	2006	52,837.1	24,110.2	28,726.9	7.2	6.2	8.1
2007	56,365.4	25,342.8	31,022.6	6.7	5.1	8.0	
2008	56,562.4	25,290.5	31,271.8	0.3	-0.2	0.8	
Quarterly data	08 2	14,749.1	6,626.3	8,122.8	1.6	1.6	1.6
08 3	14,923.3	6,466.4	8,456.9	1.5	0.7	2.2	
08 4	14,053.2	6,340.4	7,712.7	-5.6	-6.2	-5.2	
09 1	11,485.1	5,274.5	6,210.5	-10.5	-10.0	-11.0	
09 2	13,550.1	6,150.0	7,400.1	-8.1	-7.2	-8.9	



Source: B.C. & GVRD data - Statistics Canada, monthly survey (CANSIM 080-0015).



Sunshine Coast
Regional District

Was 5 **Manufacturing Principal Statistics - Search at www.made-in-bc.ca for local firms, products and more**

This table is discontinued. Sub-provincial manufacturing principal statistics are no longer being produced.

5		Tourism Room Revenue (\$ Thousands)					Tourism Room Revenue Index 2003=100	
Sunshine Coast Regional District	Year	Total/YTD	Q1	Q2	Q3	Q4	Index	
		2005	4,772.9	581.3	1,210.5	2,248.0	733.2	
	2006	5,743.1	785.7	1,361.1	2,539.9	1,056.3		
	2007	6,548.4	1,020.4	1,581.0	2,940.5	1,006.5		
	2008	6,948.4	922.5	1,627.3	3,191.4	1,207.2		
	2009	2,793.6	887.7	1,905.9				
British Columbia	Year	Total/YTD	Q1	Q2	Q3	Q4		
	2005	1,681,563.6	351,779.6	404,639.8	610,273.7	314,870.6		
	2006	1,807,608.7	366,165.1	450,747.7	652,476.4	338,219.5		
	2007	1,963,958.7	412,949.3	488,493.9	697,545.2	364,970.3		
	2008	1,977,424.9	435,223.9	503,276.7	687,708.3	351,215.9		
	2009	802,329.6	378,880.1	423,449.6				
2008 Room Revenue by Accommodation Type (\$Thousands %Share)								
TOTAL	6,948.0	100.0%	asterisk before location denotes sub-area detail					

All room revenue data has been revised. For an explanation, see our periodical called *Tourism Sector Monitor*, April and May issues of 2009.
Link to explanation of changes: http://www.bcstats.gov.bc.ca/pubs/pr_tour.asp

6		Building Permits						Total Permits Index 2003=100	
Year	Total Building Permits	Non Residential				Residential		Index	
		Total Non Res.	Industrial	Commercial	Institutional & Gov't	Units	Units		
		<-- \$ Millions -->							
2001	32.6	7.5	0.7	5.1	1.7	25.1	144		
2002	52.7	12.5	2.1	5.3	5.2	40.1	220		
2003	62.6	12.3	1.8	4.1	6.4	50.3	250		
2004	88.4	16.7	0.5	4.1	12.2	71.7	339		
2005	101.6	11.7	0.8	8.5	2.4	90.0	391		
2006	117.4	14.9	0.3	13.6	1.0	102.5	385		
2007	117.7	18.9	1.2	17.4	0.3	98.8	329		
2008	95.1	3.5	0.8	2.6	0.2	91.6	214		
Jan-Aug 08	76.2	1.9	0.4	1.4	0.1	74.3	165		
Jan-Aug 09	57.4	6.1	1.3	4.0	0.8	51.3	133		

Not all projects require a building permit, and not all municipalities & regions report. Latest month preliminary, previous month is revised.
Source: Statistics Canada (data collected from municipal and Regional District offices).



Sunshine Coast
Regional District

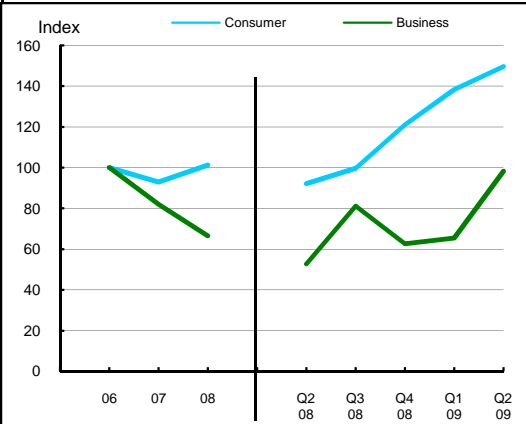
7 Business and Consumer Bankruptcies, Quarterly - NEW series

Year	Mainland/Southwest		British Columbia			
	Consumer	Business	Consumer	Business	Consumer	Business
2006	3,931	281	7,020	585		
2007	3,653	230	6,651	470		
2008	3,985	187	7,293	454		
2009						
2010						
YTD-08	1,815	86	3,335	202		
YTD-09	2,831	115	5,400	232		

Source: Office of the Superintendent of Bankruptcy, Government of Canada
Total bankruptcy index includes business and consumer bankruptcies.

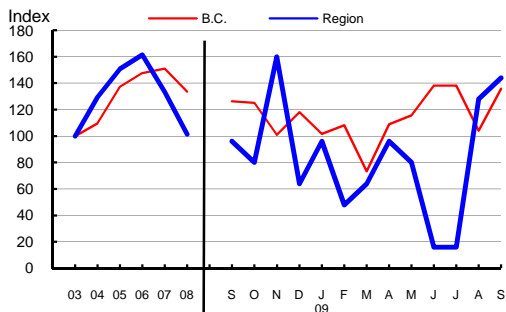
Note: Bankruptcy is not a good measure of business failure. Most firms that fail wind down operations and withdraw from business.

Mainland/Southwest Indices 2006=100



8 Incorporations

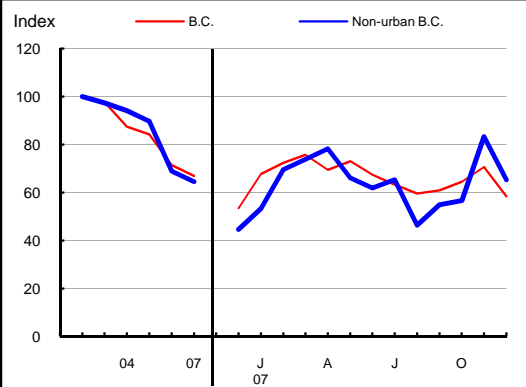
Year	Incorporations	Incorporations Index 2003=100	
		B.C.	Region
2001	64		
2002	75		
2003	75		
2004	97		
2005	113		
2006	121		
2007	100		
2008	76		
Jan-Sep 08	57		
Jan-Sep 09	43		



Source: Incorporations - (B.C.) Ministry of Finance

Bankruptcies (Discontinued)

Total Bankruptcy Index 2002=100
Total = Consumer + Business



9 Business and Consumer Bankruptcies (Discontinued)

Year	Non-urban B.C.		B.C.			
	Consumer	Business	Consumer	Business	Consumer	Business
2003	1,186	173	9,385	1,002		
2004	1,139	175	8,378	922		
2005	1,097	155	8,173	786		
2006	856	106	7,021	587		
2007	827	75	6,651	470		
Jan-Dec 06	856	106	7,022	587		
Jan-Dec 07	827	75	6,651	470		

Source: Office of the Superintendent of Bankruptcy, Government of Canada
Total bankruptcy index includes business and consumer bankruptcies.

Note: Bankruptcy is not a good measure of business failure. Most firms that fail wind down operations and withdraw from business.

Non-urban B.C. Indices 2002=100





Sunshine Coast
Regional District

Dependence on the Safety Net

10 Basic Income Assistance (Basic Income Assistance Recipients in Subject Group as a percent of Reference Group)							11 Employment Insurance (was UI) (EI beneficiaries as a percent of Reference Group)				
Subject Group (receiving benefits)		All (0-64)	Children <19 yrs in Families	Young Adults (19-24)	'Mid' Group (25-54)	Single Parent Women	Working Age (19-64)	Young Adults (19-24)	'Mid' Group (25-54)	'Older' Workers (55-64)	Note Older Data
Reference Group		Total Pop. 0-64	Total Pop. <19	Total Pop. 19-24	Total Pop. 25-54	Tot. Female 19-64	Total Pop. 19-64	Total Pop. 19-24	Total Pop. 25-54	Total Pop. 55-64	
Sunshine Coast Regional District	Sep '07	1.3	2.2	1.5	1.4	0.7	1.5	1.5	1.6	1.1	Mar '07
	Dec '07	1.4	1.8	1.9	1.5	0.9	0.7	0.8	0.8	0.5	Jun '07
	Mar '08	1.5	2.5	2.3	1.5	0.8	1.0	0.6	1.2	0.7	Sep '07
	Jun '08	1.5	2.3	2.6	1.4	0.8	1.7	1.9	2.0	1.1	Dec '07
	Sep '08	1.3	2.1	2.2	1.2	0.8	1.5	1.8	1.8	0.7	Mar '08
	Dec '08	1.8	2.7	3.1	1.9	0.6	1.7	1.6	2.0	1.1	Jun '08
	Mar '09	2.2	3.0	4.3	2.4	0.7	0.9	1.1	1.1	0.6	Sep '08
	Jun '09	2.4	3.1	5.0	2.5	0.7	2.0	2.9	2.2	1.3	Dec '08
	Sep '09	2.3	3.1	4.4	2.5	0.8	3.4	4.5	3.9	2.1	Mar '09
Duration of Dependence on Income Assistance (As of September 2009)		All* Income Assistance Recipients as % of Total Pop 0-64: Region Compared to B.C.					EI Beneficiaries Aged 19-64 as % of Working Age Population				
Region		Percent					Percent				
B.C.											
Total Number of Recipients	526	72,592									
Percent Distribution by Duration											
<1 Year	75.9	65.3									
1-2 Years	14.6	18.2									
>2 Years	9.5	16.4									
Source: Ministry of Children and Family Development administrative files and BC Stats population estimates. These figures include only a subset of those receiving income assistance. Excluded are those on Continuous Assistance (disabled or with persistent multiple barriers to employment, children in the home of a relative, and OAS/seniors. A recipient is defined as 'each person living in a family or living alone that is receiving basic income assistance'. Data does not include Aboriginal people living on Reserve. Note: '-' Data too small to release.							Source: Ministry of Housing and Social Development and BC Stats population estimates.				
12 Dependence on Basic Income Assistance and/or Employment Insurance (Basic Income Assistance Recipients + Employment Insurance Recipients in Subject Group as a percent of Reference Group)											
Subject Group (receiving assistance)		All (19-64)	Young Adults (19-24)	'Mid' Group (25-54)	'Older' Group (55-64)	All 'Safety Net' Recipients as % of Total Pop 19-64: Region Compared to B.C.					
Reference Group		Total Pop. 19-64	Total Pop. 19-24	Total Pop. 25-54	Total Pop. 55-64	Percent					
Sunshine Coast Regional District	Mar '07	2.5	3.2	2.9	1.5						
	Jun '07	1.7	2.4	2.0	0.8						
	Sep '07	2.0	2.1	2.5	1.0						
	Dec '07	2.9	3.7	3.5	1.4						
	Mar '08	2.6	4.1	3.2	1.1						
	Jun '08	2.9	4.1	3.4	1.4						
	Sep '08	1.9	3.3	2.3	0.9						
	Dec '08	3.4	5.6	4.0	1.6						
Mar '09	5.3	8.3	6.2	2.6							

Note: The EI figures reported above no longer include persons claiming parental/adoption leave. Previous issues of this table did include them.



Sunshine Coast
Regional District

13 Demographics

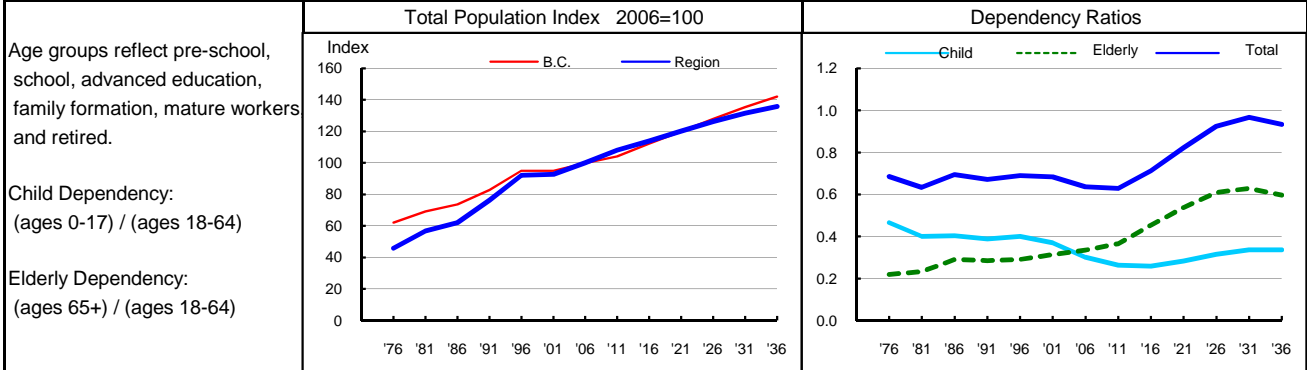
This area has generally had positive net migration, with particularly strong inflows in the mid-nineties. Overall, Sunshine Coast has seen substantial growth over the last two decades. As with all areas of British Columbia, the population has aged, adding 10.5 years to its median age since the mid 1980s. In part due to the region's attractiveness to retirees, Sunshine Coast's median age in 2007 was eight years older than the provincial median. Since the mid 1980s, fertility has dropped dramatically, dipping to below provincial levels in recent years. Overall dependency is relatively high, with six dependents for every ten people of working ages in 2007, compared to the provincial ratio of 5.1. Despite relatively high fertility in the past, the older age structure of the population boosts the number of deaths resulting in consistently negative natural increase by 2001. Net inflows, although moderated by negative natural increase, have led to respectable growth in the last five years.

14 Projection

The proximity to the Lower Mainland and the promise of improvements to the transportation network will likely result in more population growth in this area. As the baby boom generation reaches retirement, there will likely be increasing inflows of retirees to the area. This strong net inflow should compensate for increasingly negative natural increase figures throughout the latter part of the projection. This region can expect sustained growth over the duration of the projection period, adding over 7,000 to its population by 2036. The population will continue to age and, by the end of the projection period, this region will likely have almost 9.5 dependents for every 10 people of working age, and most of these dependents will be seniors.

15 Selected Demographic Characteristics

Year	Population by age group, Thousands of persons							House-holds (,000)	Dependency Ratios			Year
	0-4	5-17	18-24	25-44	45-64	65+	All Ages		Child	Elderly	Total	
1976	0.9	2.7	1.3	3.3	3.0	1.7	12.8	4.8	0.467	0.219	0.685	1976
1981	1.1	2.8	1.6	4.7	3.5	2.3	15.9	6.2	0.402	0.233	0.634	1981
1986	1.2	2.9	1.2	5.2	3.8	3.0	17.3	7.2	0.404	0.290	0.694	1986
1991	1.4	3.6	1.4	6.6	4.8	3.6	21.3	8.7	0.388	0.284	0.672	1991
1996	1.6	4.5	1.5	7.4	6.3	4.4	25.7	10.8	0.401	0.290	0.691	1996
2001	1.2	4.5	1.4	6.2	7.8	4.8	25.9	11.1	0.370	0.314	0.684	2001
2006	1.0	4.2	1.7	5.5	9.9	5.7	28.0	12.5	0.303	0.334	0.637	2006
2011	1.2	3.7	2.5	5.3	10.7	6.8	30.2	14.1	0.264	0.365	0.630	2011
2016	1.3	3.5	2.5	6.1	10.0	8.4	31.9	15.6	0.260	0.454	0.713	2016
2021	1.5	3.7	2.1	7.0	9.3	9.9	33.6	16.5	0.284	0.538	0.822	2021
2026	1.7	4.1	2.1	7.9	8.3	11.2	35.3	17.0	0.315	0.608	0.924	2026
2031	1.7	4.6	2.2	8.7	7.8	11.8	36.8	17.3	0.338	0.629	0.966	2031
2036	1.7	4.9	2.4	8.7	8.5	11.7	38.0	17.5	0.337	0.596	0.933	2036



Source: Population data are Projection P-34, run in Summer 2009. Figures are adjusted for Census undercount and are for July 1st of stated year.
Note: Demographics and Projection notes in Tables 13 and 14 are from Projection P-33, run the Summer 2008.