



**Thompson-Nicola
 Regional District**

1	General Economy
<p>Municipalities in Regional District: Ashcroft, Cache Creek, Chase, Clinton, Kamloops, Logan Lake, Lytton, Merritt</p> <p>The main economic activities in this region are agriculture, forestry, mining, manufacturing and tourism. This area is largely dependent on resource extraction. However mine closures and recent restructuring in the forestry industry have had impacts on the region. The area has many wood processing facilities, some of which have announced closures or output reductions. The forestry resources in this area have been affected by the mountain pine beetle infestation. Current annual allowable cuts are higher to facilitate salvage harvesting in the area. Economic activity has shifted towards tourism. The area is a significant cattle and horse ranching area in the province. Several mines are at proposal stages within this area. Resort expansions are also under construction as the tourism industry in this area grows.</p>	

The notes above and later in this report on Demographics and Projections are the basis for BC Stats population projection P33 completed in the Summer of 2008. The projections are updated annually to reflect known demographic shifts and economic conditions. Full projections with "Components of Change", "Special Age Groups", "5 Year Age Cohorts by Sex", and accompanying notes are available for B.C., the 8 development regions, the 28 regional districts, the 79 local health areas (LHAs) and a number of "special areas" of local interest which are not part of a province-wide geocoding system. Individual areas, including age and sex detail, are modestly priced. Users requiring only total population projections are able to self serve for free from our population projection page: www.bcstats.gov.bc.ca/data/pop/pop/popproj.asp The full B.C. level projection is available free on the above page.

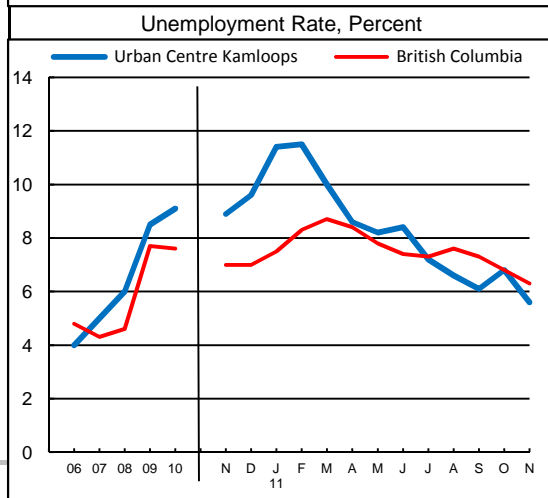
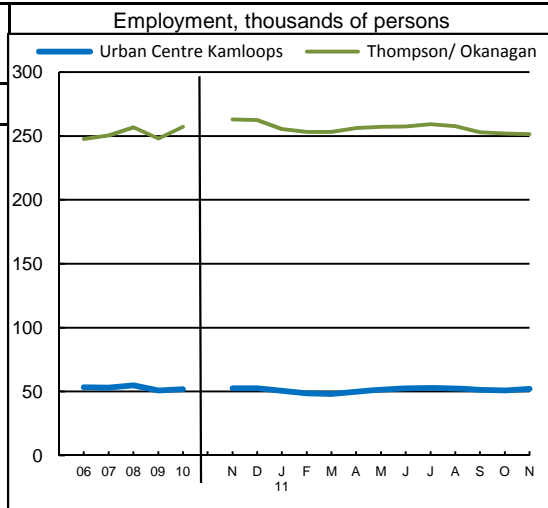
2		Economic Structure - Number of Business Locations, by Sector, by Employment Size, December 2010								
NAICS Code	Industry Sector based on NAICS Canada (North American Industrial Classification System)	Thompson-Nicola							British Columbia	
		Locations With No Employees	Firms with Employees						With Employees	
			Less Than 20	20 to 49	50 to 199	200 Plus	All Sizes with Emp.	Percent of Total	Percent of Total	All Sizes
	Total, All Industries	4,644	4,502	445	177	23	5,147	100.0%	100.0%	370,262
11	Agric., Forestry, Fishing & Hunt	405	293	17	7	0	317	6.2%	4.1%	15,134
21	Mining & Oil & Gas Extract.	23	21	2	3	1	27	0.5%	0.6%	2,220
22	Utilities	7	6	0	1	0	7	0.1%	0.1%	363
23	Construction	807	649	36	12	0	697	13.5%	14.0%	51,926
31	Manufacturing (31-33)	92	148	24	16	4	192	3.7%	3.2%	11,824
41	Wholesale Trade	123	190	32	2	0	224	4.4%	4.4%	16,471
44	Retail Trade (44-45)	252	577	70	34	3	684	13.3%	8.1%	30,041
48	Transp. & Warehousing (48-49)	297	241	26	10	2	279	5.4%	5.1%	18,964
51	Information & Cultural Indust.	27	35	5	3	0	43	0.8%	1.5%	5,509
52	Finance & Insurance	273	154	19	3	1	177	3.4%	5.4%	19,946
53	Real Estate & Rental & Leasing	747	210	7	3	0	220	4.3%	11.2%	41,389
54	Profes'nl, Scientif. & Tech. Srv	463	406	18	3	0	427	8.3%	13.1%	48,449
55	Mgmt. of Companies & Enter.	292	40	3	2	0	45	0.9%	3.9%	14,283
56	Admin. & Sup'rt, Waste Mgmt.	180	231	17	6	1	255	5.0%	4.5%	16,769
61	Educational Services	30	36	6	3	5	50	1.0%	1.2%	4,290
62	Health Care & Social Assistance	133	428	37	18	2	485	9.4%	5.6%	20,661
71	Arts, Entertainment & Recreation	58	52	10	6	2	70	1.4%	1.7%	6,187
72	Accom. & Food Services	138	319	87	29	1	436	8.5%	4.3%	15,964
81	Other Serv's (ex. Public Admin.)	297	444	17	5	0	466	9.1%	7.8%	28,939
91	Public Administration	-	22	12	11	1	46	0.9%	0.3%	933

Source: Statistics Canada, Business Register Division. Note: This table formerly identified **business establishments**.



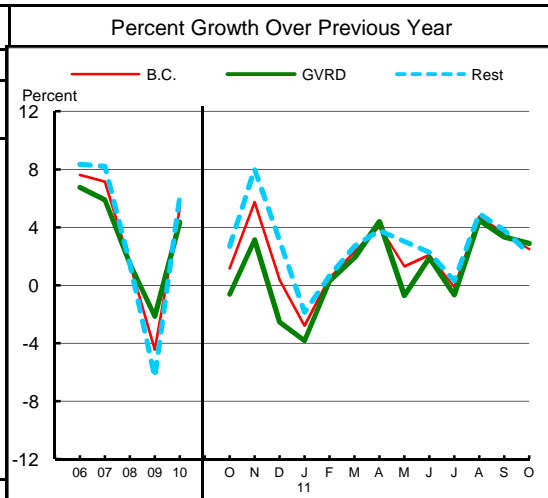
**Thompson-Nicola
 Regional District**

3 Employment and Unemployment Rate, monthly data are 3-month moving average, actual, ending in stated month						
	Urban Centre Kamloops		Thompson/ Okanagan		British Columbia	
	Emp. ('000)	Unemp. %	Emp. ('000)	Unemp. %	Emp. ('000)	Unemp. %
2001	41.7	13.8	210.4	9.4	1,919.7	7.7
2002	42.4	9.0	207.2	9.4	1,952.8	8.5
2003	45.3	9.2	217.4	8.8	1,998.0	8.0
2004	50.5	6.5	226.6	6.6	2,032.8	7.2
2005	48.6	4.7	239.5	5.2	2,091.9	5.8
2006	53.4	4.0	247.6	5.0	2,147.2	4.8
2007	53.1	5.0	250.4	4.4	2,222.6	4.3
2008	54.8	6.0	256.6	5.5	2,266.4	4.6
2009	50.8	8.5	248.0	8.8	2,217.9	7.7
2010	51.9	9.1	257.2	8.6	2,256.5	7.6
Jan	55.6	7.6	255.4	8.7	2,219.8	8.0
Feb	54.1	8.6	251.6	9.4	2,213.3	8.1
Mar	53.1	9.5	254.0	9.3	2,213.2	8.2
Apr	52.3	10.0	254.2	9.1	2,224.5	7.8
May	51.3	9.7	253.7	9.1	2,238.7	7.8
Jun	50.5	9.0	255.1	8.4	2,258.8	7.6
Jul	50.4	8.0	256.6	8.1	2,277.1	7.7
Aug	51.5	8.0	259.0	8.1	2,289.9	7.8
Sep	51.5	8.2	257.1	8.7	2,284.5	7.8
Oct	52.1	8.1	261.0	8.6	2,278.8	7.5
Nov	52.5	8.9	262.9	8.3	2,273.6	7.0
Dec	52.5	9.6	262.4	8.0	2,269.6	7.0
2011						
Jan	50.5	11.4	255.5	9.0	2,250.0	7.5
Feb	48.4	11.5	253.2	9.3	2,232.3	8.3
Mar	47.9	10.0	253.3	9.3	2,227.7	8.7
Apr	49.7	8.6	256.2	8.8	2,240.5	8.4
May	51.4	8.2	257.1	8.4	2,261.0	7.8
Jun	52.6	8.4	257.4	8.1	2,280.1	7.4
Jul	52.9	7.2	259.2	7.4	2,295.3	7.3
Aug	52.2	6.6	257.6	6.9	2,298.0	7.6
Sep	51.2	6.1	253.0	7.3	2,300.7	7.3
Oct	50.7	6.8	251.9	7.2	2,299.8	6.8
Nov	52.1	5.6	251.5	6.9	2,296.6	6.3
Dec						
Average:						
Jan-Nov10	!! Caution		257.3	8.7	2,256.8	7.7
Jan-Nov11	Small		254.8	7.9	2,273.7	7.5
% Change	Sample		-1.0		0.7	



Source: Labour Force Survey, Statistics Canada. Sub-provincial regions are development regions or census metropolitan areas.

4 Retail Sales - based on Statistics Canada monthly survey						
Year or Year/Year-to-Date	\$ millions of retail sales			Percent change on year ago		
	B.C.	Greater Vancouver	Rest of Province	B.C.	Greater Vancouver	Rest of Province
2006	53,133.4	24,301.6	28,831.9	7.6	6.7	8.3
2007	56,930.4	25,733.1	31,197.3	7.1	5.9	8.2
2008	57,783.0	26,116.0	31,667.0	1.5	1.5	1.5
2009	55,221.9	25,556.4	29,665.6	-4.4	-2.1	-6.3
2010	58,144.7	26,667.6	31,477.1	5.3	4.3	6.1
Jan-Sep 2010	42,773.1	19,620.4	23,152.6			
Jan-Sep 2011	43,551.2	19,871.0	23,680.1	1.8	1.3	2.3



Source: B.C. & GVRD data - Statistics Canada, CANSIM 080-0020, unadjusted data.



**Thompson-Nicola
 Regional District**

Was 5 **Manufacturing Principal Statistics - Search at www.made-in-bc.ca for local firms, products and more**

This table is discontinued. Sub-provincial manufacturing principal statistics are no longer being produced.

The methodology used to generate Room Revenue estimates is being refined and as a result the regularly scheduled release of the data from April through August 2011 was interrupted. BC Stats will be publishing updated estimates, including revisions to previously-released data, in September of 2011. We apologize for any inconvenience to users.

5		Tourism Room Revenue (\$ Thousands)					Tourism Room Revenue Index 2004=100	
	Year	Total/YTD	Q1	Q2	Q3	Q4	Index	
Thompson-Nicola Regional District	2006	67,892.0	14,695.0	16,877.0	24,421.0	11,899.0		
	2007	72,727.0	16,147.0	18,418.0	25,368.0	12,794.0		
	2008	74,942.0	16,168.0	19,114.0	27,292.0	12,368.0		
	2009	64,916.0	13,863.0	16,244.0	24,119.0	10,690.0		
	2010	59,790.0	14,714.0	18,325.0	26,751.0			
British Columbia	2006	1,807,466.0	366,131.0	450,720.0	652,402.0	338,213.0		
	2007	1,807,466.0	366,131.0	450,720.0	652,402.0	338,213.0		
	2008	1,977,385.0	435,234.0	503,243.0	687,790.0	351,118.0		
	2009	1,743,074.0	378,897.0	423,761.0	617,008.0	323,408.0		
	2010	1,594,984.0	502,294.0	441,819.0	650,871.0			
2009 Room Revenue by Accommodation Type (\$Thousands %Share)								
TOTAL	64,750.0	100.0%						
Fishing lodges	1,500.0	2.3%						
Hotels	29,935.0	46.2%						
1-75 Rooms	5,382.0	8.3%						
Motels	21,364.0	33.0%						
Vacation Rentals	5,672.0	8.8%						
Miscellaneous	6,279.0	9.7%						
*City of Kamloops	36,756.0	56.8%						
*Village of Cache Creek	2,018.0	3.1%						

Source: Hotel tax database maintained by Consumer Taxation Branch, Ministry of Small Business and Revenue. Published in detail monthly by BC Stats.

All room revenue data has been revised. For an explanation, see our periodical called Tourism Sector Monitor, April and May issues of 2009. Link to explanation of changes: http://www.bcstats.gov.bc.ca/pubs/pr_tour.asp

6		Building Permits					Total Permits Index 2005=100	
Year	Total Building Permits	Non Residential				Residential	Units	Index
		Total Non Res.	Industrial	Commercial	Institutional & Gov't			
		<-- \$ Millions -->						
2003	175.2	92.0	31.4	25.4	35.2	83.2	551	
2004	177.0	49.8	7.1	20.6	22.1	127.2	860	
2005	281.7	83.0	8.1	42.6	32.3	198.7	1,188	
2006	323.3	91.4	10.1	51.0	30.3	231.9	1,228	
2007	312.9	79.5	18.7	35.3	25.5	233.4	1,065	
2008	299.6	74.8	8.1	61.3	5.4	224.8	1,020	
2009	215.8	73.7	10.3	31.6	31.8	142.1	618	
2010	245.3	58.1	13.9	36.9	7.3	187.2	908	
Jan-Oct 10	221.4	49.0	10.8	31.0	7.2	172.4	832	
Jan-Oct 11	189.9	60.5	17.4	29.9	13.2	129.5	533	

Not all projects require a building permit, and not all municipalities & regions report. Latest month preliminary, previous month is revised. Source: Statistics Canada (data collected from municipal and Regional District offices).

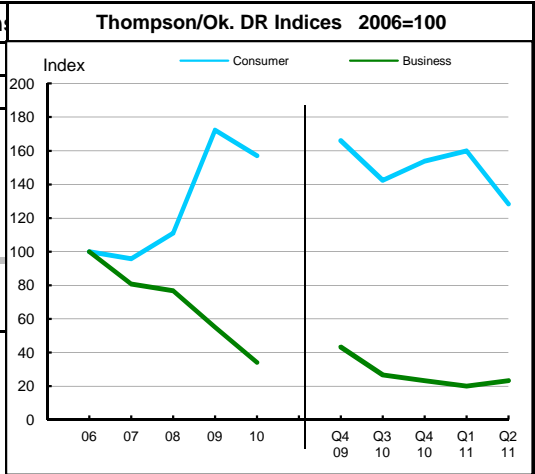


**Thompson-Nicola
 Regional District**

7 Business and Consumer Bankruptcies, Metro/Development Region						
Year	Thompson/Ok. DR		Kelowna, CMA		British Columbia	
	Consumer	Business	Consumer	Business	Consumer	Business
2006	913	120	378	41	7,020	585
2007	874	97	378	32	6,651	470
2008	1,014	92	426	31	7,293	454
2009	1,573	66	631	20	10,639	380
2010	1,434	41	533	18	9,674	229
YTD-10	726	26	283	11	5,023	132
YTD-11	658	13	227	8	4,261	97

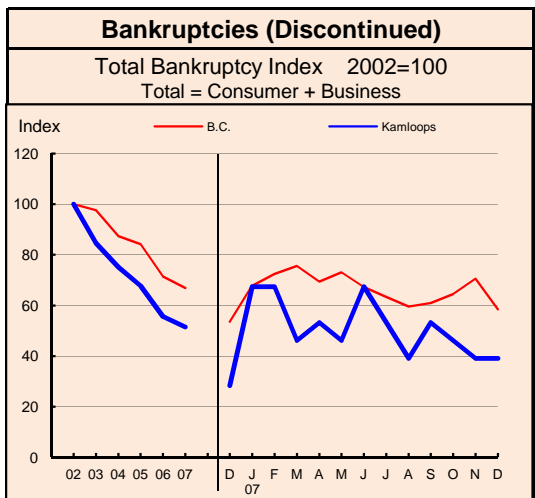
Source: Office of the Superintendent of Bankruptcy, Government of Canada
 Total bankruptcy index includes business and consumer bankruptcies.

Note: Bankruptcy is not a good measure of business failure. Most firms that fail wind down operations and withdraw from business.



8 Incorporations			
Year	Incorporations	Incorporations Index 2005=100	
		B.C.	Region
2003	385	100	100
2004	435	110	120
2005	565	100	100
2006	689	100	100
2007	633	100	100
2008	595	100	100
2009	500	100	100
2010	476	100	100
Jan-Sep 10	358	100	100
Jan-Sep 11	397	100	100

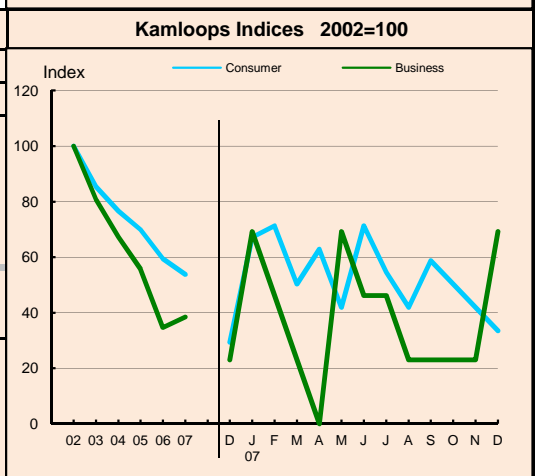
Source: Incorporations - (B.C.) Ministry of Finance



9 Business and Consumer Bankruptcies (Discontinued)						
Year	Kamloops		Non-urban B.C.		B.C.	
	Consumer	Business	Consumer	Business	Consumer	Business
2003	244	42	1,186	173	9,385	1,002
2004	219	35	1,139	175	8,378	922
2005	200	29	1,097	155	8,173	786
2006	170	18	856	106	7,021	587
2007	154	20	827	75	6,651	470
Jan-Dec 06	170	18	856	106	7,022	587
Jan-Dec 07	154	20	827	75	6,651	470

Source: Office of the Superintendent of Bankruptcy, Government of Canada
 Total bankruptcy index includes business and consumer bankruptcies.

Note: Bankruptcy is not a good measure of business failure. Most firms that fail wind down operations and withdraw from business.

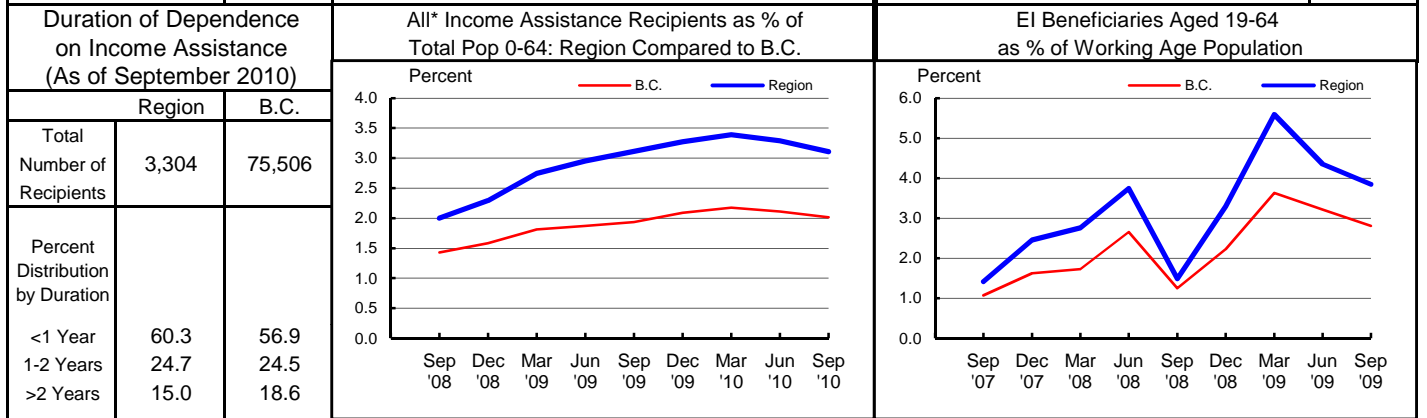




**Thompson-Nicola
 Regional District**

Dependence on the Safety Net

10 Basic Income Assistance (Basic Income Assistance Recipients in Subject Group as a percent of Reference Group)							11 Employment Insurance (was UI) (EI beneficiaries as a percent of Reference Group)				
Subject Group (receiving benefits)		All (0-64)	Children <19 yrs in Families	Young Adults (19-24)	'Mid' Group (25-54)	Single Parent Women	Working Age (19-64)	Young Adults (19-24)	'Mid' Group (25-54)	'Older' Workers (55-64)	Note Older Data
Reference Group		Total Pop. 0-64	Total Pop. <19	Total Pop. 19-24	Total Pop. 25-54	Tot. Female 19-64	Total Pop. 19-64	Total Pop. 19-24	Total Pop. 25-54	Total Pop. 55-64	
Thompson-Nicola Regional District	Sep '08	2.0	3.2	2.4	1.8	1.0	1.4	1.2	1.6	1.0	Sep '07
	Dec '08	2.3	3.6	3.0	2.1	1.0	2.5	2.6	2.6	1.8	Dec '07
	Mar '09	2.7	3.9	3.6	2.7	1.1	2.8	2.9	3.0	2.1	Mar '08
	Jun '09	3.0	4.3	4.1	2.8	1.3	3.7	3.8	4.1	2.6	Jun '08
	Sep '09	3.1	4.8	4.0	2.9	1.4	1.5	1.6	1.6	1.0	Sep '08
	Dec '09	3.3	4.8	4.5	3.1	1.3	3.3	4.0	3.5	2.3	Dec '08
	Mar '10	3.4	5.0	4.7	3.2	1.3	5.6	6.8	5.9	3.8	Mar '09
	Jun '10	3.3	4.9	4.5	3.1	1.4	4.4	5.0	4.8	2.7	Jun '09
	Sep '10	3.1	4.7	4.0	2.9	1.4	3.8	3.7	4.3	2.6	Sep '09



Source: Ministry of Social Development administrative files and BC Stats population estimates. These figures include only a subset of those receiving income assistance. Excluded are those on Continuous Assistance (disabled or with persistent multiple barriers to employment, children in the home of a relative, and OAS/seniors. A recipient is defined as 'each person living in a family or living alone that is receiving basic income assistance'. Data does not include Aboriginal people living on Reserve. Note: '-' Data too small to release.

12 Dependence on Basic Income Assistance and/or Employment Insurance
 (Basic Income Assistance Recipients + Employment Insurance Recipients in Subject Group as a percent of Reference Group)

Subject Group (receiving assistance)		All (19-64)	Young Adults (19-24)	'Mid' Group (25-54)	'Older' Group (55-64)	All 'Safety Net' Recipients as % of Total Pop 19-64: Region Compared to B.C.					
Reference Group		Total Pop. 19-64	Total Pop. 19-24	Total Pop. 25-54	Total Pop. 55-64	Percent					
Thompson-Nicola Regional District	Sep '07	2.7	2.9	3.1	1.3						
	Dec '07	3.9	4.5	4.3	2.2						
	Mar '08	4.3	5.0	4.8	2.5						
	Jun '08	5.2	6.1	5.8	3.0						
	Sep '08	3.0	3.8	3.4	1.4						
	Dec '08	5.0	6.8	5.4	2.8						
	Mar '09	7.8	10.2	8.4	4.4						
	Jun '09	6.7	8.9	7.4	3.4						
	Sep '09	6.2	7.4	7.0	3.3						

Note: This data should be revamped in early 2012 with EI data coming from Statistics Canada and IA data from Ministry of Social Development.



**Thompson-Nicola
 Regional District**

13 Demographics

Like many regions in British Columbia with a high dependence on the resource sector, this region experienced net migration outflows in the mid-eighties and the late nineties. Migration was also negative for a few years in the early part of the new century. Otherwise, net migration has been tended to be strongly positive. The population has aged at a faster rate than the province as a whole, adding 11 years to its median age since the mid 1980s, compared with a provincial gain of 7.2 years. Almost two years younger than British Columbia as a whole in 1986, Thompson-Nicola's population was two years older by 2007. Fertility has decreased over the last two decades, and dipped to just below provincial rates in the late 1990s. Along with the decline in fertility, child dependency ratios have been dropping. Elderly dependency ratios have been increasing and are now slightly higher than those of the province as a whole. Sex ratios have recently begun to favour females over males as the population ages and the economy diversifies to include more service oriented employment. Deaths have almost doubled while births show a downward trend. Although natural increase remains positive, its contribution to growth in this region has been diminishing. Relative to the period before, growth in Thompson-Nicola slowed between 1998 and 2007. In the initial few years, the slower growth was largely due to net outflows of migrants. In the later years, however, slower growth is largely driven by much lower natural increase levels.

14 Projection

Interprovincial migration to the province and to this region is forecast to remain positive throughout the projection period. Natural increase is expected to continue its decline, becoming negative within the next few years and therefore lowering the population growth rate. However, overall positive net migration is expected to contribute to population growth throughout the projection period. By 2036, this region can expect a population larger by about 27,000 people. The population will continue to age and, by the end of the projection period, this region will likely have over 7 dependents for every 10 people of working age and most of these dependents will be seniors.

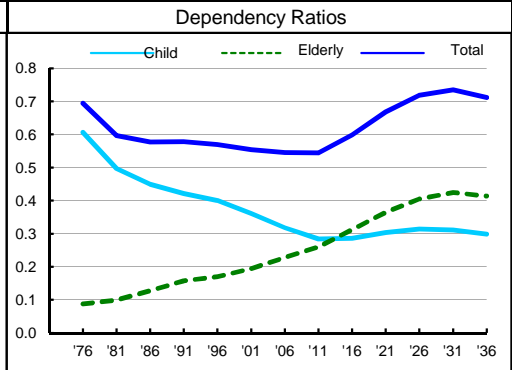
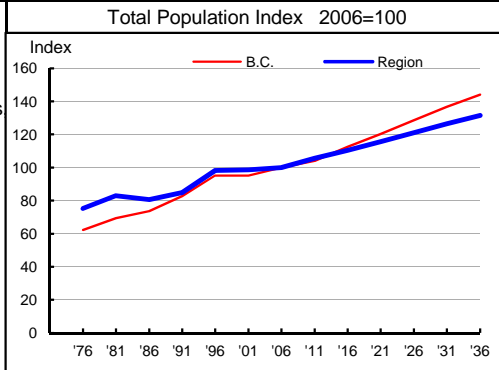
15 Selected Demographic Characteristics

Year	Population by age group, Thousands of persons							House-holds (,000)	Dependency Ratios			Year
	0-4	5-17	18-24	25-44	45-64	65+	All Ages		Child	Elderly	Total	
1976	8.0	25.8	12.5	27.7	15.6	4.9	94.4	28.9	0.606	0.088	0.694	1976
1981	8.1	24.3	14.6	32.8	17.9	6.5	104.2	35.1	0.497	0.100	0.597	1981
1986	7.6	21.3	11.3	33.2	19.7	8.2	101.2	36.6	0.450	0.127	0.577	1986
1991	7.3	21.2	10.3	34.6	22.6	10.6	106.6	39.2	0.422	0.157	0.579	1991
1996	7.8	23.6	12.1	38.3	28.2	13.3	123.4	46.5	0.400	0.170	0.570	1996
2001	6.3	22.5	11.8	35.2	32.8	15.5	124.0	48.8	0.360	0.194	0.554	2001
2006	5.9	20.0	12.2	31.4	37.7	18.6	125.6	49.9	0.317	0.228	0.546	2006
2011	6.4	18.0	13.0	32.4	40.5	22.3	132.6	54.7	0.284	0.260	0.544	2011
2016	6.8	18.0	11.0	35.9	39.9	27.1	138.7	59.2	0.286	0.312	0.598	2016
2021	7.0	19.4	9.9	38.9	38.3	31.7	145.2	62.4	0.304	0.364	0.668	2021
2026	7.0	20.8	10.4	40.7	37.4	35.9	152.2	65.6	0.314	0.405	0.719	2026
2031	6.8	21.6	11.5	40.0	40.1	38.8	158.8	68.8	0.311	0.424	0.735	2031
2036	7.0	21.8	12.4	39.4	44.7	40.0	165.3	72.1	0.298	0.414	0.712	2036

Age groups reflect pre-school, school, advanced education, family formation, mature workers and retired.

Child Dependency:
 (ages 0-17) / (ages 18-64)

Elderly Dependency:
 (ages 65+) / (ages 18-64)



Source: Population data are Projection P-36, run in Summer 2011. Figures are adjusted for Census undercount and are for July 1st of stated year.
 Note: Demographics and Projection notes in Tables 13 and 14 are from Projection P-33, run the Summer 2008.