



Cariboo
Regional District

1	General Economy
<p>Municipalities in Regional District: Quesnel, Williams Lake, 100 Mile House, Wells</p> <p>The main economic activities include forestry, agriculture, mining and tourism. The area has several wood processing and value added wood manufacturing plants, some of which have announced closures or output reductions. The timber supply areas of this region has been severely impacted by the mountain pine beetle. Current annual allowable cuts have been increased in an effort to salvage timber, but supplies are expected to be negatively impacted in the years to come. The area is home to several large mines and significant mining exploration activity. The Mount Polley gold and copper mine, located north of Williams Lake, is expected to have lower output in 2008 after the ore in its Wight Pit is exhausted. The Gibraltar gold and copper mine recently extended its mine life to 2023. There are several other mining projects proposed for this area and mining exploration continues. The tourism and recreation industries are also growing. Beef cattle and horse ranching are important local industries.</p>	

The notes above and later in this report on Demographics and Projections are the basis for BC Stats population projection P33 completed in the Summer of 2008. The projections are updated annually to reflect known demographic shifts and economic conditions. Full projections with "Components of Change", "Special Age Groups", "5 Year Age Cohorts by Sex", and accompanying notes are available for B.C., the 8 development regions, the 28 regional districts, the 79 local health areas (LHAs) and a number of "special areas" of local interest which are not part of a province-wide geocoding system. Individual areas, including age and sex detail, are modestly priced. Users requiring only total population projections are able to self serve for free from our population projection page: www.bcstats.gov.bc.ca/data/pop/pop/popproj.asp The full B.C. level projection is available free on the above page.

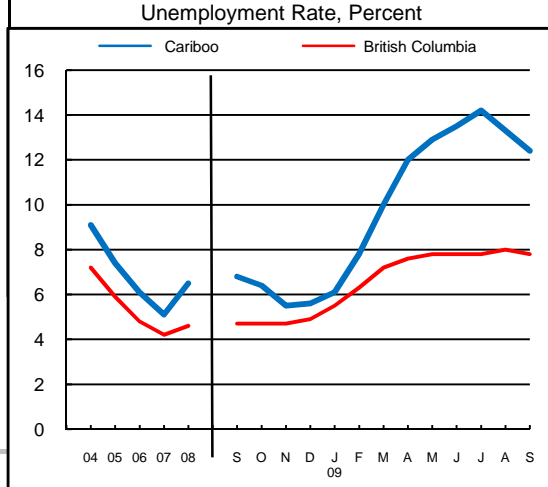
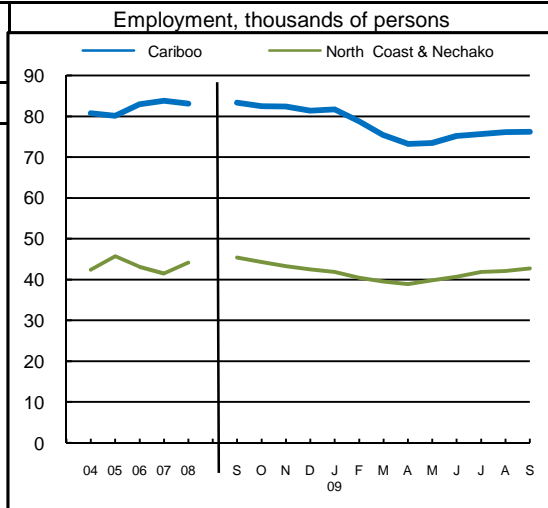
2		Economic Structure - Number of Business Locations, by Sector, by Employment Size, December 2008								
NAICS Code	Industry Sector based on NAICS Canada (North American Industrial Classification System)	Locations With No Employees	Cariboo						British Columbia	
			Firms with Employees						With Employees	
			Less Than 20	20 to 49	50 to 99	200 Plus	All Sizes with Emp.	Percent of Total	Percent of Total	All Sizes
	Total, All Industries	2,261	2,445	185	75	14	2,719	100.0%	100.0%	175,003
11	Agric., Forestry, Fishing & Hunt	481	402	26	8	0	436	16.0%	4.0%	7,009
21	Mining & Oil & Gas Extract.	16	8	0	0	0	8	0.3%	0.6%	1,071
22	Utilities	3	4	1	0	0	5	0.2%	0.1%	203
23	Construction	329	304	12	4	0	320	11.8%	12.1%	21,108
31	Manufacturing (31-33)	52	86	15	12	8	121	4.5%	4.5%	7,879
41	Wholesale Trade	66	91	10	3	0	104	3.8%	5.9%	10,359
44	Retail Trade (44-45)	139	318	26	11	1	356	13.1%	11.9%	20,742
48	Transp. & Warehousing (48-49)	182	206	10	2	0	218	8.0%	4.4%	7,734
51	Information & Cultural Indus.	15	22	1	2	0	25	0.9%	1.4%	2,412
52	Finance & Insurance	70	52	12	6	0	70	2.6%	3.8%	6,564
53	Real Estate & Rental & Leasing	230	79	1	0	1	81	3.0%	4.5%	7,835
54	Profes'nl, Scientif. & Tech. Srv	177	159	4	1	0	164	6.0%	11.0%	19,278
55	Mgmt. of Companies & Enter.	122	27	0	0	0	27	1.0%	1.6%	2,818
56	Admin. & Sup'rt, Waste Mgmt.	73	97	3	4	0	104	3.8%	4.9%	8,513
61	Educational Services	14	7	0	0	2	9	0.3%	1.4%	2,363
62	Health Care & Social Assistance	30	142	20	4	2	168	6.2%	8.4%	14,773
71	Arts, Entertainment & Recreation	26	48	5	0	0	53	1.9%	1.6%	2,873
72	Accom. & Food Services	82	185	26	12	0	223	8.2%	6.7%	11,639
81	Other Serv's (ex. Public Admin.)	154	202	5	0	0	207	7.6%	10.9%	19,095
91	Public Administration	-	6	8	6	0	20	0.7%	0.4%	735

Source: Statistics Canada, Business Register Division. Note: This table formerly identified **business establishments**.



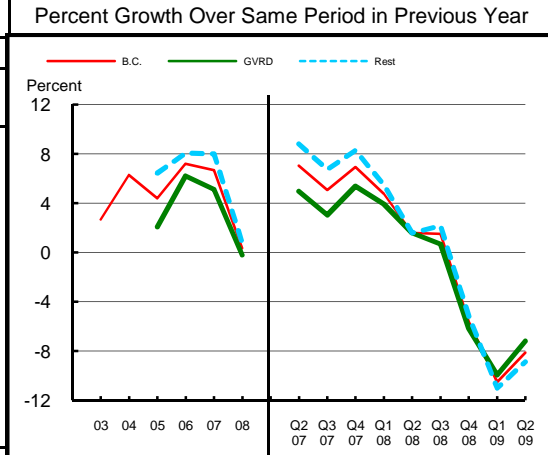
Cariboo
Regional District

3		Employment and Unemployment Rate, monthly data are 3-month moving average, actual, ending in stated month					
		Cariboo		North Coast & Nechako		British Columbia	
		Emp. ('000)	Unemp. %	Emp. ('000)	Unemp. %	Emp. ('000)	Unemp. %
	1999	81.4	11.6	46.7	8.8	1,894.4	8.3
	2000	79.1	9.9	47.3	10.2	1,931.3	7.1
	2001	79.4	9.7	46.6	11.2	1,921.6	7.7
	2002	78.0	12.7	44.9	12.6	1,965.0	8.5
	2003	78.2	11.1	44.8	11.3	2,014.7	8.0
	2004	80.7	9.1	42.4	11.6	2,062.7	7.2
	2005	80.1	7.4	45.7	8.1	2,130.5	5.9
	2006	82.9	6.1	43.1	6.7	2,195.5	4.8
	2007	83.8	5.1	41.5	8.0	2,266.3	4.2
	2008	83.1	6.5	44.1	7.7	2,314.3	4.6
2008	Jan	88.0	5.2	41.5	8.2	2,286.5	4.1
	Feb	86.5	5.8	42.1	7.3	2,278.9	4.2
	Mar	84.0	6.8	43.3	7.1	2,284.9	4.4
	Apr	82.9	7.7	44.3	7.9	2,295.0	4.4
	May	82.7	7.9	44.4	8.6	2,313.3	4.5
	Jun	83.5	7.0	45.4	8.5	2,329.8	4.4
	Jul	83.4	6.9	45.8	7.5	2,345.0	4.5
	Aug	83.2	7.2	46.5	7.6	2,350.7	4.6
	Sep	83.3	6.8	45.4	6.8	2,337.7	4.7
	Oct	82.5	6.4	44.3	7.7	2,325.3	4.7
	Nov	82.4	5.5	43.3	7.7	2,312.5	4.7
	Dec	81.4	5.6	42.5	8.6	2,304.8	4.9
2009	Jan	81.7	6.1	41.9	9.3	2,278.4	5.5
	Feb	78.8	7.8	40.5	9.8	2,251.1	6.3
	Mar	75.3	10.0	39.5	11.1	2,227.5	7.2
	Apr	73.2	12.0	38.9	10.6	2,229.0	7.6
	May	73.4	12.9	39.8	10.6	2,243.1	7.8
	Jun	75.2	13.5	40.7	10.0	2,264.6	7.8
	Jul	75.6	14.2	41.9	10.5	2,275.9	7.8
	Aug	76.1	13.3	42.1	11.0	2,280.5	8.0
	Sep	76.2	12.4	42.7	10.1	2,275.8	7.8
	Oct						
	Nov						
	Dec						
Average:							
ytd average based on Jan-Sep08		83.6	6.9	44.7	7.4	2,317.5	4.5
based on Jan-Sep09		75.5	12.0	40.9	10.4	2,256.0	7.6
actual data % Change		-9.7		-8.4		-2.7	



Source: Labour Force Survey, Statistics Canada. Sub-provincial regions are development regions or census metropolitan areas.

4		Retail Sales - based on Statistics Canada monthly survey						Percent Growth Over Same Period in Previous Year	
		\$ millions of retail sales			Percent change on year ago				
Year or Year/Quarter		B.C.	Greater Vancouver	Rest of Province	B.C.	Greater Vancouver	Rest of Province		
	2004	47,216.6	22,243.6	24,973.0	6.3	n/a	n/a		
	2005	49,286.3	22,702.6	26,583.7	4.4	2.1	6.4		
Annual data	2006	52,837.1	24,110.2	28,726.9	7.2	6.2	8.1		
	2007	56,365.4	25,342.8	31,022.6	6.7	5.1	8.0		
	2008	56,562.4	25,290.5	31,271.8	0.3	-0.2	0.8		
Quarterly data	08 2	14,749.1	6,626.3	8,122.8	1.6	1.6	1.6		
	08 3	14,923.3	6,466.4	8,456.9	1.5	0.7	2.2		
	08 4	14,053.2	6,340.4	7,712.7	-5.6	-6.2	-5.2		
	09 1	11,485.1	5,274.5	6,210.5	-10.5	-10.0	-11.0		
	09 2	13,550.1	6,150.0	7,400.1	-8.1	-7.2	-8.9		



Source: B.C. & GVRD data - Statistics Canada, monthly survey (CANSIM 080-0015).



**Cariboo
Regional District**

Was 5 **Manufacturing Principal Statistics - Search at www.made-in-bc.ca for local firms, products and more**

This table is discontinued. Sub-provincial manufacturing principal statistics are no longer being produced.

5		Tourism Room Revenue (\$ Thousands)					Tourism Room Revenue Index 2003=100	
Year	Total/YTD	Q1	Q2	Q3	Q4	Index		
						B.C.	Region	
Cariboo Regional District	2005	18,101.1	2,524.0	4,773.3	7,376.3	3,427.4		
	2006	19,824.3	2,858.8	4,930.4	8,054.0	3,981.2		
	2007	21,215.9	3,025.2	5,735.9	8,349.4	4,105.4		
	2008	21,553.1	3,312.9	5,847.9	8,503.0	3,889.3		
	2009	7,924.8	2,872.6	5,052.3				
British Columbia	2005	1,681,563.6	351,779.6	404,639.8	610,273.7	314,870.6		
	2006	1,807,608.7	366,165.1	450,747.7	652,476.4	338,219.5		
	2007	1,963,958.7	412,949.3	488,493.9	697,545.2	364,970.3		
	2008	1,977,424.9	435,223.9	503,276.7	687,708.3	351,215.9		
	2009	802,329.6	378,880.1	423,449.6				
2008 Room Revenue by Accommodation Type (\$Thousands %Share)								
TOTAL	21,553.0	100.0%						
Hotels	8,648.0	40.1%						
Motels	8,591.0	39.9%						
*City of Quesnel	4,482.0	20.8%						
*City of Williams Lake	6,887.0	32.0%						

asterisk before location denotes sub-area detail

Source: Hotel tax database maintained by Consumer Taxation Branch, Ministry of Small Business and Revenue
Published in detail monthly by BC Stats.

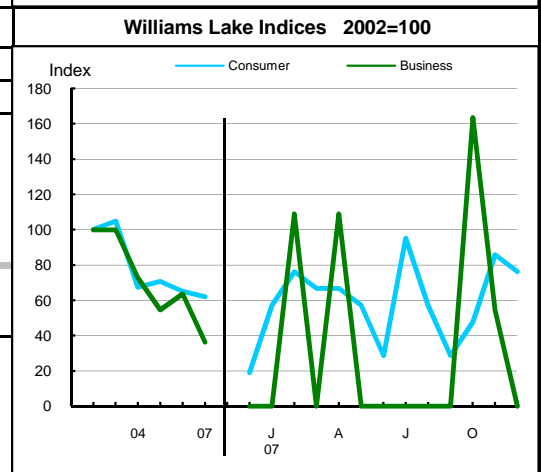
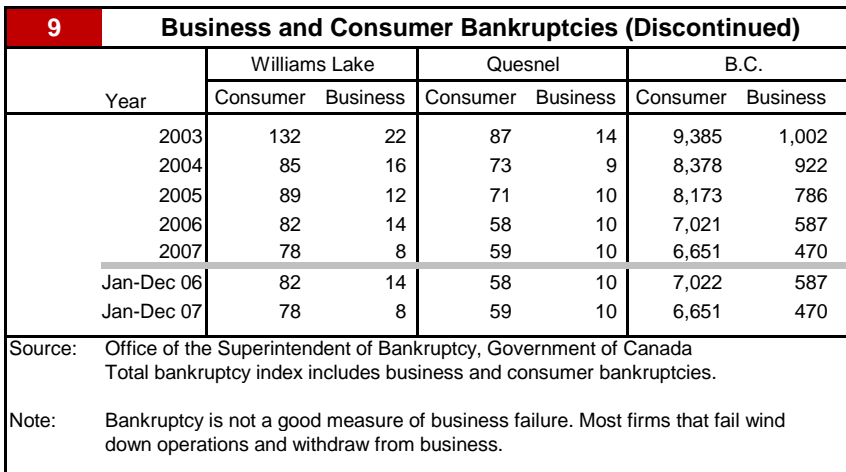
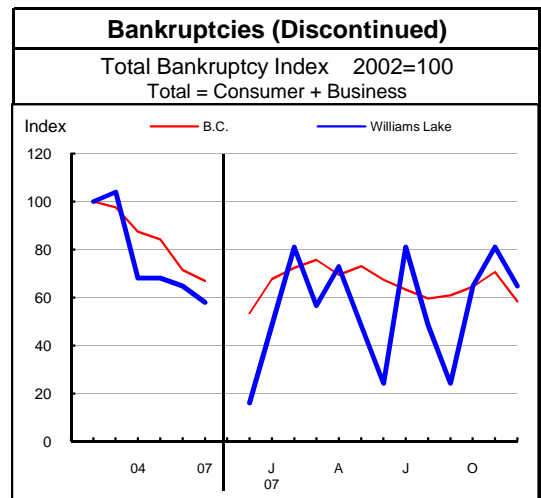
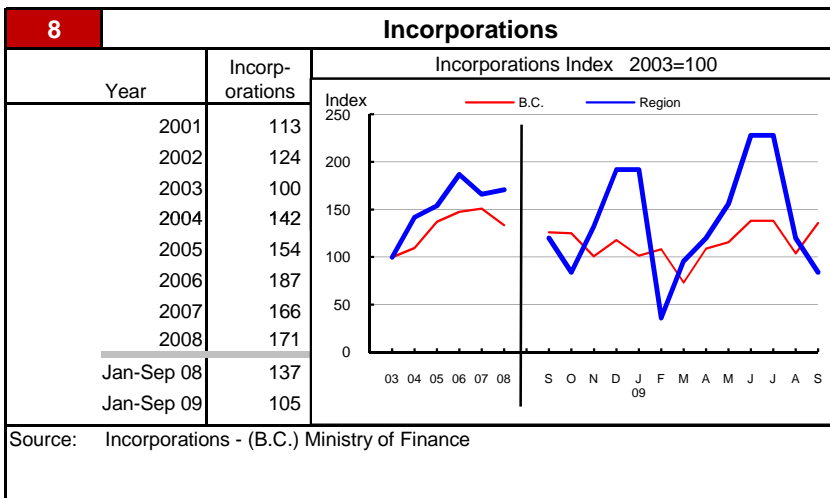
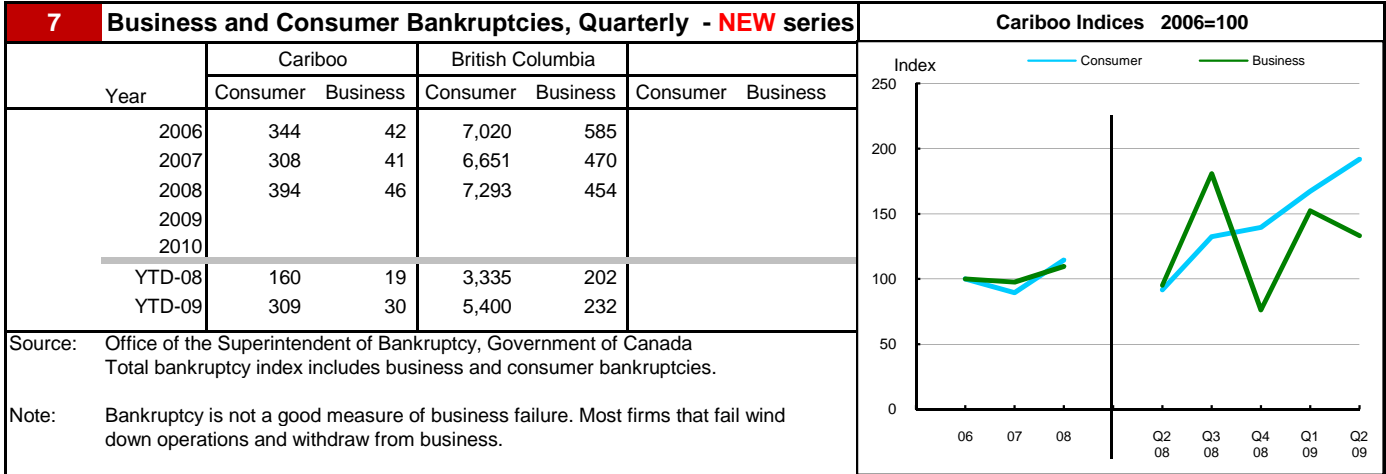
All room revenue data has been revised. For an explanation, see our periodical called *Tourism Sector Monitor*, April and May issues of 2009.
Link to explanation of changes: http://www.bcstats.gov.bc.ca/pubs/pr_tour.asp

6		Building Permits						Total Permits Index 2003=100	
Year	Total Building Permits	Non Residential				Residential		Index	
		Total Non Res.	Industrial	Commercial	Institutional & Gov't	Units	B.C.	Region	
		<-- \$ Millions -->							
2001	33.2	16.4	3.0	10.4	3.0	16.8	88		
2002	41.1	15.5	3.6	8.0	3.9	25.6	131		
2003	37.5	21.2	4.0	7.9	9.3	16.4	87		
2004	42.1	16.2	2.7	5.7	7.8	25.9	121		
2005	91.6	60.7	26.6	9.6	24.5	31.0	153		
2006	51.1	17.9	1.7	11.0	5.3	33.1	124		
2007	78.5	10.1	4.5	5.1	0.5	68.4	261		
2008	90.6	31.2	3.2	13.7	14.4	59.3	217		
Jan-Aug 08	68.5	18.6	0.9	8.1	9.6	49.9	185		
Jan-Aug 09	51.8	14.0	0.9	3.2	9.9	37.8	144		

Not all projects require a building permit, and not all municipalities & regions report. Latest month preliminary, previous month is revised.
Source: Statistics Canada (data collected from municipal and Regional District offices).



**Cariboo
Regional District**





**Cariboo
Regional District**

Dependence on the Safety Net

10 Basic Income Assistance (Basic Income Assistance Recipients in Subject Group as a percent of Reference Group)							11 Employment Insurance (was UI) (EI beneficiaries as a percent of Reference Group)									
Subject Group (receiving benefits)		All (0-64)	Children <19 yrs in Families	Young Adults (19-24)	'Mid' Group (25-54)	Single Parent Women	Working Age (19-64)	Young Adults (19-24)	'Mid' Group (25-54)	'Older' Workers (55-64)	Note Older Data					
Reference Group		Total Pop. 0-64	Total Pop. <19	Total Pop. 19-24	Total Pop. 25-54	Tot. Female 19-64	Total Pop. 19-64	Total Pop. 19-24	Total Pop. 25-54	Total Pop. 55-64						
Cariboo Regional District	Sep '07	2.0	3.4	3.0	1.7	1.2	3.7	4.0	4.1	2.4	Mar '07					
	Dec '07	2.2	3.6	3.3	1.8	0.8	3.3	3.6	3.7	2.2	Jun '07					
	Mar '08	2.3	3.6	3.1	2.0	0.8	2.2	2.4	2.4	1.6	Sep '07					
	Jun '08	2.2	3.5	3.0	1.9	0.7	3.2	4.1	3.3	2.4	Dec '07					
	Sep '08	2.2	3.6	3.0	1.9	0.7	4.1	4.8	4.4	2.6	Mar '08					
	Dec '08	2.3	3.5	3.3	2.2	1.0	7.0	7.3	7.8	4.8	Jun '08					
	Mar '09	2.9	4.3	4.5	2.8	1.3	2.6	2.9	3.0	1.6	Sep '08					
	Jun '09	3.1	4.5	4.9	2.9	1.5	5.0	5.8	5.4	3.4	Dec '08					
	Sep '09	3.3	4.6	4.7	3.1	1.5	9.6	11.2	10.6	6.0	Mar '09					
	Duration of Dependence on Income Assistance (As of September 2009)		All* Income Assistance Recipients as % of Total Pop 0-64: Region Compared to B.C.					EI Beneficiaries Aged 19-64 as % of Working Age Population								
Region		Percent					Percent									
B.C.		Region					B.C.					Region				
Total Number of Recipients	1,697	72,592														
Percent Distribution by Duration																
<1 Year	67.7	65.3														
1-2 Years	18.1	18.2														
>2 Years	14.1	16.4														
Source: Ministry of Children and Family Development administrative files and BC Stats population estimates. These figures include only a subset of those receiving income assistance. Excluded are those on Continuous Assistance (disabled or with persistent multiple barriers to employment, children in the home of a relative, and OAS/seniors. A recipient is defined as 'each person living in a family or living alone that is receiving basic income assistance'. Data does not include Aboriginal people living on Reserve. Note: '-' Data too small to release.							Source: Ministry of Housing and Social Development and BC Stats population estimates.									
12 Dependence on Basic Income Assistance and/or Employment Insurance (Basic Income Assistance Recipients + Employment Insurance Recipients in Subject Group as a percent of Reference Group)																
Subject Group (receiving assistance)		All (19-64)	Young Adults (19-24)	'Mid' Group (25-54)	'Older' Group (55-64)	All 'Safety Net' Recipients as % of Total Pop 19-64: Region Compared to B.C.										
Reference Group		Total Pop. 19-64	Total Pop. 19-24	Total Pop. 25-54	Total Pop. 55-64	Percent										
Cariboo Regional District	Mar '07	5.3	7.0	5.8	3.0											
	Jun '07	4.9	6.7	5.4	2.8											
	Sep '07	3.7	5.4	4.1	2.0											
	Dec '07	4.8	7.2	5.0	3.0											
	Mar '08	5.7	7.6	6.3	3.2											
	Jun '08	8.7	10.2	9.7	5.4											
	Sep '08	4.3	5.8	4.8	2.1											
	Dec '08	6.7	9.0	7.4	3.8											
	Mar '09	11.9	15.5	13.2	6.7											

Note: The EI figures reported above no longer include persons claiming parental/adoption leave. Previous issues of this table did include them.



**Cariboo
Regional District**

13 Demographics

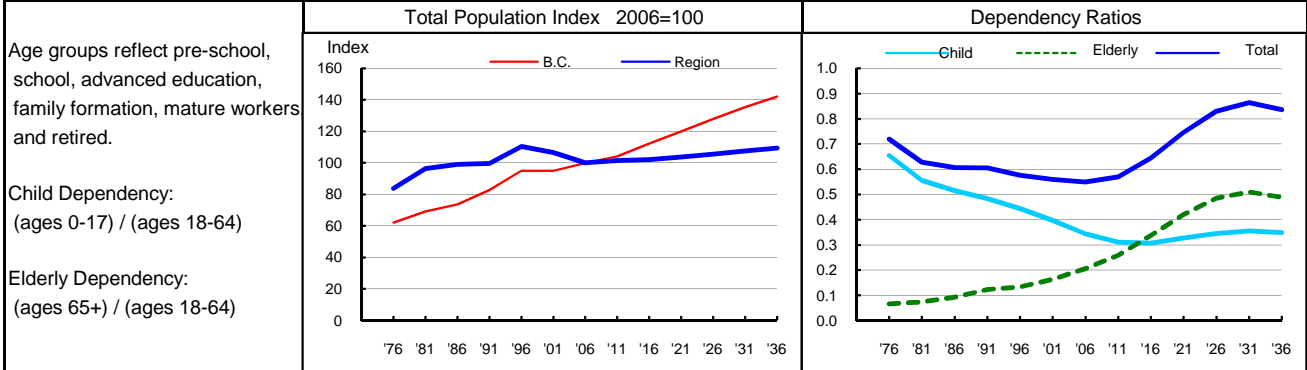
The pattern of net migration over the last twenty years is one of extremes. Overall, Cariboo has experienced a drop in population since the mid 1980s, largely due to net outflows of migrants since the late 1990s. The population has aged more rapidly than the province as a whole, adding over 13 years to its median age since 1986, compared with a provincial gain of only 7.2 years. This ageing is likely also a function of migration outflows, with younger people leaving the area. As a result, by 2007, Cariboo's population was over two years older than the population of British Columbia. Fertility has decreased sharply over the last twenty years, but has remained above provincial levels. Consistent with this higher fertility, the ratio of children (aged 17 and under) to working aged (18 to 64) is also higher, despite a decline over the last two decades. Elderly dependency ratios have increased, but are still lower than provincial ratios. The dependence on male-dominated resource sector industries is the reason for a sex ratio that is weighted in favour of males, in contrast to the province as a whole, where there are more females than males. Although births have been declining and the number of deaths has been climbing, natural increase remains positive. However, natural increase has a diminishing impact on population growth in Cariboo and has been largely unable to offset significant net outflows of migrants over the last decade or so.

14 Projection

After the first 7 years, net migration to this region is forecast to become increasingly positive throughout the projection period. The growing number of deaths will likely exceed births early in the projection, lowering the population growth rate. As a result, the population in this region in 2036 is roughly the same as that in 2007. However, the structure of the population will shift as the population continues to age. By the end of the projection period, Cariboo will likely have almost 8.5 dependents for every 10 people of working age.

15 Selected Demographic Characteristics

Year	Population by age group, Thousands of persons							Households (,000)	Dependency Ratios			Year
	0-4	5-17	18-24	25-44	45-64	65+	All Ages		Child	Elderly	Total	
1976	5.1	15.1	7.0	15.6	8.1	2.0	53.0	15.2	0.654	0.066	0.720	1976
1981	5.9	14.9	8.4	19.5	9.5	2.7	60.9	18.9	0.555	0.073	0.629	1981
1986	5.4	14.6	6.9	21.1	11.0	3.6	62.6	21.1	0.515	0.092	0.607	1986
1991	4.8	14.1	5.7	21.0	12.6	4.8	63.0	21.9	0.483	0.122	0.606	1991
1996	4.7	14.9	6.5	22.2	15.6	5.9	69.8	25.4	0.444	0.132	0.576	1996
2001	3.9	13.2	5.9	19.2	18.1	7.0	67.3	25.8	0.397	0.163	0.560	2001
2006	3.1	10.9	5.2	15.5	20.1	8.4	63.2	25.5	0.344	0.205	0.549	2006
2011	3.4	9.3	6.0	14.0	20.9	10.6	64.2	27.0	0.311	0.259	0.569	2011
2016	3.3	8.7	5.2	14.3	19.8	13.2	64.6	28.5	0.307	0.337	0.644	2016
2021	3.4	8.8	4.6	15.0	17.9	15.8	65.6	29.3	0.327	0.420	0.747	2021
2026	3.4	9.2	4.5	16.0	16.1	17.7	66.7	29.8	0.346	0.484	0.830	2026
2031	3.3	9.6	4.7	16.5	15.2	18.6	68.0	30.1	0.355	0.510	0.865	2031
2036	3.3	9.8	5.0	16.2	16.4	18.4	69.1	30.5	0.349	0.489	0.837	2036



Source: Population data are Projection P-34, run in Summer 2009. Figures are adjusted for Census undercount and are for July 1st of stated year.
Note: Demographics and Projection notes in Tables 13 and 14 are from Projection P-33, run the Summer 2008.