



**Mount Waddington  
Regional District**

<b>1</b>	<b>General Economy</b>
<p>Municipalities in Regional District: Alert Bay, Port Alice, Port Hardy, Port McNeill</p> <p>This region includes the northern tip of Vancouver Island and adjacent areas on the mainland. This area has historically been an important forestry and fisheries area for B.C.; however, both industries have undergone restructuring in recent years. The area is home to many small wood processing facilities. The annual allowable cuts of the Timber Supply Areas here have been reduced. There are both fin-fish and shellfish operations in this area and processing plants. Tourism is a potential future area for growth.</p>	

The notes above and later in this report on Demographics and Projections are the basis for BC Stats population projection P33 completed in the Summer of 2008. The projections are updated annually to reflect known demographic shifts and economic conditions. Full projections with "Components of Change", "Special Age Groups", "5 Year Age Cohorts by Sex", and accompanying notes are available for B.C., the 8 development regions, the 28 regional districts, the 79 local health areas (LHAs) and a number of "special areas" of local interest which are not part of a province-wide geocoding system. Individual areas, including age and sex detail, are modestly priced. Users requiring only total population projections are able to self serve for free from our population projection page: [www.bcstats.gov.bc.ca/data/pop/pop/popproj.asp](http://www.bcstats.gov.bc.ca/data/pop/pop/popproj.asp) The full B.C. level projection is available free on the above page.

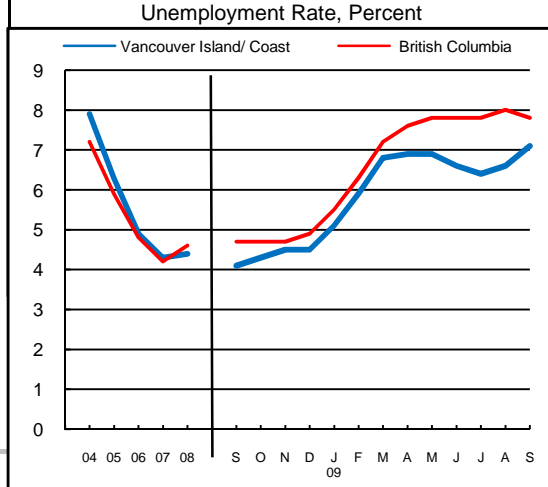
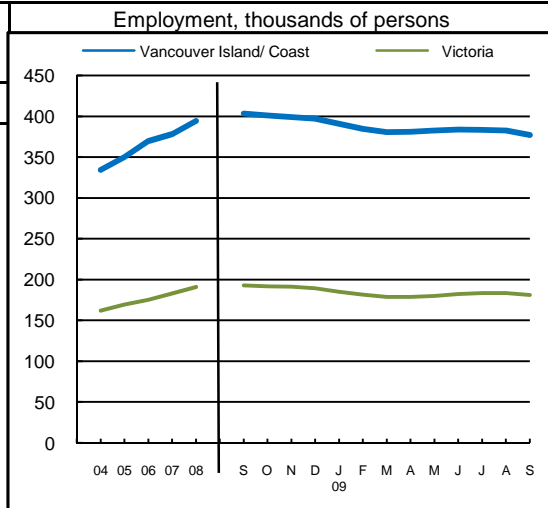
<b>2</b>		<b>Economic Structure - Number of Business Locations, by Sector, by Employment Size, December 2008</b>								
NAICS Code	Industry Sector based on NAICS Canada (North American Industrial Classification System)	Mount Waddington							British Columbia	
		Locations With No Employees	Firms with Employees						With Employees	
			Less Than 20	20 to 49	50 to 199	200 Plus	All Sizes with Emp.	Percent of Total	Percent of Total	All Sizes
	Total, All Industries	447	472	39	13	4	528	100.0%	100.0%	175,003
11	Agric., Forestry, Fishing & Hunt	103	72	3	5	1	81	15.3%	4.0%	7,009
21	Mining & Oil & Gas Extract.	1	0	0	0	0	0	0.0%	0.6%	1,071
22	Utilities	-	2	0	0	0	2	0.4%	0.1%	203
23	Construction	46	48	3	1	0	52	9.8%	12.1%	21,108
31	Manufacturing (31-33)	20	16	2	2	1	21	4.0%	4.5%	7,879
41	Wholesale Trade	13	19	2	1	0	22	4.2%	5.9%	10,359
44	Retail Trade (44-45)	25	61	6	2	0	69	13.1%	11.9%	20,742
48	Transp. & Warehousing (48-49)	29	42	2	0	1	45	8.5%	4.4%	7,734
51	Information & Cultural Indust.	4	5	0	0	0	5	0.9%	1.4%	2,412
52	Finance & Insurance	13	4	4	0	0	8	1.5%	3.8%	6,564
53	Real Estate & Rental & Leasing	46	14	0	0	0	14	2.7%	4.5%	7,835
54	Profes'nl, Scientif. & Tech. Srv	28	29	0	1	0	30	5.7%	11.0%	19,278
55	Mgmt. of Companies & Enter.	25	2	0	0	0	2	0.4%	1.6%	2,818
56	Admin. & Sup'rt, Waste Mgmt.	19	21	1	0	0	22	4.2%	4.9%	8,513
61	Educational Services	5	1	0	0	1	2	0.4%	1.4%	2,363
62	Health Care & Social Assistance	13	23	1	1	0	25	4.7%	8.4%	14,773
71	Arts, Entertainment & Recreation	8	11	1	0	0	12	2.3%	1.6%	2,873
72	Accom. & Food Services	20	50	4	0	0	54	10.2%	6.7%	11,639
81	Other Serv's (ex. Public Admin.)	28	46	2	0	0	48	9.1%	10.9%	19,095
91	Public Administration	1	6	8	0	0	14	2.7%	0.4%	735

Source: Statistics Canada, Business Register Division. Note: This table formerly identified **business establishments**.



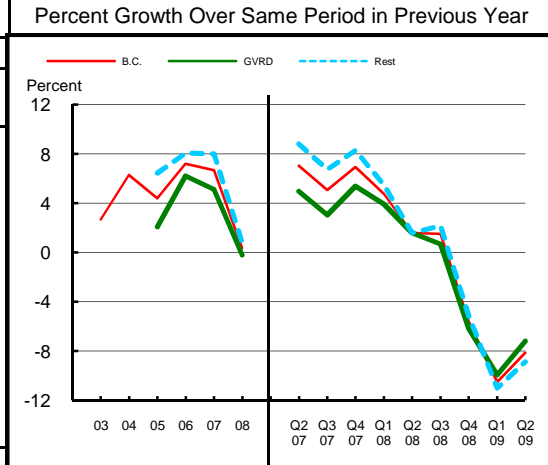
**Mount Waddington  
Regional District**

<b>3 Employment and Unemployment Rate, monthly data are 3-month moving average, actual, ending in stated month</b>							
	Vancouver Island/ Coast		Victoria		British Columbia		
	Emp. ('000)	Unemp. %	Emp. ('000)	Unemp. %	Emp. ('000)	Unemp. %	
1999	330.0	7.9	155.3	6.6	1,894.4	8.3	
2000	327.4	7.8	155.3	6.7	1,931.3	7.1	
2001	307.3	9.2	150.8	6.3	1,921.6	7.7	
2002	317.4	8.7	155.7	7.0	1,965.0	8.5	
2003	319.1	8.6	158.7	6.2	2,014.7	8.0	
2004	334.2	7.9	162.0	5.3	2,062.7	7.2	
2005	350.0	6.3	169.3	4.5	2,130.5	5.9	
2006	369.5	4.9	175.2	3.7	2,195.5	4.8	
2007	378.3	4.3	182.9	3.3	2,266.3	4.2	
2008	394.2	4.4	190.9	3.3	2,314.3	4.6	
2008 Jan	375.8	4.5	186.2	3.0	2,286.5	4.1	
2008 Feb	378.0	5.0	185.0	3.3	2,278.9	4.2	
2008 Mar	380.4	5.2	186.8	3.2	2,284.9	4.4	
2008 Apr	386.9	4.6	190.0	2.8	2,295.0	4.4	
2008 May	391.4	4.3	193.8	2.7	2,313.3	4.5	
2008 Jun	395.9	3.9	195.0	2.8	2,329.8	4.4	
2008 Jul	401.8	3.8	195.1	3.3	2,345.0	4.5	
2008 Aug	403.3	3.8	194.0	3.7	2,350.7	4.6	
2008 Sep	403.3	4.1	192.8	3.7	2,337.7	4.7	
2008 Oct	401.0	4.3	191.8	3.8	2,325.3	4.7	
2008 Nov	399.0	4.5	191.2	3.4	2,312.5	4.7	
2008 Dec	397.2	4.5	189.2	3.6	2,304.8	4.9	
2009 Jan	390.9	5.1	184.9	3.9	2,278.4	5.5	
2009 Feb	384.4	5.9	181.3	4.9	2,251.1	6.3	
2009 Mar	380.7	6.8	178.8	5.5	2,227.5	7.2	
2009 Apr	381.0	6.9	178.9	6.0	2,229.0	7.6	
2009 May	382.5	6.9	180.1	6.2	2,243.1	7.8	
2009 Jun	383.5	6.6	182.4	6.2	2,264.6	7.8	
2009 Jul	383.1	6.4	183.4	6.1	2,275.9	7.8	
2009 Aug	382.4	6.6	183.4	6.1	2,280.5	8.0	
2009 Sep	376.9	7.1	181.1	6.6	2,275.8	7.8	
2009 Oct							
2009 Nov							
2009 Dec							
Average:							
ytd average	Jan-Sep08	393.2	4.4	191.5	3.2	2,317.5	4.5
based on	Jan-Sep09	380.2	6.8	180.8	6.1	2,256.0	7.6
actual data	% Change	-3.3		-5.6		-2.7	



Source: Labour Force Survey, Statistics Canada. Sub-provincial regions are development regions or census metropolitan areas.

<b>4 Retail Sales - based on Statistics Canada monthly survey</b>						
Year or Year/Quarter	\$ millions of retail sales			Percent change on year ago		
	B.C.	Greater Vancouver	Rest of Province	B.C.	Greater Vancouver	Rest of Province
2004	47,216.6	22,243.6	24,973.0	6.3	n/a	n/a
2005	49,286.3	22,702.6	26,583.7	4.4	2.1	6.4
Annual data 2006	52,837.1	24,110.2	28,726.9	7.2	6.2	8.1
2007	56,365.4	25,342.8	31,022.6	6.7	5.1	8.0
2008	56,562.4	25,290.5	31,271.8	0.3	-0.2	0.8
Quarterly data 08 2	14,749.1	6,626.3	8,122.8	1.6	1.6	1.6
08 3	14,923.3	6,466.4	8,456.9	1.5	0.7	2.2
08 4	14,053.2	6,340.4	7,712.7	-5.6	-6.2	-5.2
09 1	11,485.1	5,274.5	6,210.5	-10.5	-10.0	-11.0
09 2	13,550.1	6,150.0	7,400.1	-8.1	-7.2	-8.9



Source: B.C. & GVRD data - Statistics Canada, monthly survey (CANSIM 080-0015).



**Mount Waddington  
Regional District**

**Was 5** **Manufacturing Principal Statistics - Search at [www.made-in-bc.ca](http://www.made-in-bc.ca) for local firms, products and more**

This table is discontinued. Sub-provincial manufacturing principal statistics are no longer being produced.

5		Tourism Room Revenue (\$ Thousands)						Tourism Room Revenue Index 2003=100	
Year	Total/YTD	Q1	Q2	Q3	Q4	Index			
						B.C.	Region		
Mt. Waddington Regional District	2005	6,152.4	563.4	1,441.9	3,459.4	687.7			
	2006	6,853.9	705.2	1,541.7	3,733.9	873.1			
	2007	7,994.9	954.9	1,725.5	4,159.9	1,154.6			
	2008	8,164.9	1,048.2	1,800.7	4,293.2	1,022.7			
	2009	2,222.1	753.4	1,468.6					
British Columbia	2005	1,681,563.6	351,779.6	404,639.8	610,273.7	314,870.6			
	2006	1,807,608.7	366,165.1	450,747.7	652,476.4	338,219.5			
	2007	1,963,958.7	412,949.3	488,493.9	697,545.2	364,970.3			
	2008	1,977,424.9	435,223.9	503,276.7	687,708.3	351,215.9			
	2009	802,329.6	378,880.1	423,449.6					
2008 Room Revenue by Accommodation Type (\$Thousands   %Share)									
TOTAL	8,165.0	100.0%							
Hotels	2,414.0	29.6%							

asterisk before location denotes sub-area detail

Source: Hotel tax database maintained by Consumer Taxation Branch, Ministry of Small Business and Revenue. Published in detail monthly by BC Stats.

All room revenue data has been revised. For an explanation, see our periodical called *Tourism Sector Monitor*, April and May issues of 2009. Link to explanation of changes: [http://www.bcstats.gov.bc.ca/pubs/pr\\_tour.asp](http://www.bcstats.gov.bc.ca/pubs/pr_tour.asp)

6		Building Permits						Total Permits Index 2003=100	
Year	Total Building Permits	Non Residential				Residential	Units	Index	
		Total Non Res.	Industrial	Commercial	Institutional & Gov't			B.C.	Region
		<-- \$ Millions -->							
2001	3.9	2.4	0.4	1.1	1.0	1.4	5		
2002	1.6	0.3	0.0	0.2	0.0	1.3	5		
2003	1.1	0.1	0.1	0.1	0.0	1.0	5		
2004	1.6	0.4	0.0	0.4	0.0	1.1	2		
2005	3.6	1.7	0.3	1.4	0.1	1.8	10		
2006	2.6	0.4	0.0	0.4	0.1	2.2	9		
2007	9.4	7.5	0.1	5.1	2.4	1.9	7		
2008	5.5	2.5	0.6	1.9	0.0	3.0	4		
Jan-Aug 08	4.9	2.1	0.6	1.5	0.0	2.8	3		
Jan-Aug 09	5.8	3.9	0.6	1.5	1.8	2.0	4		

Not all projects require a building permit, and not all municipalities & regions report. Latest month preliminary, previous month is revised. Source: Statistics Canada (data collected from municipal and Regional District offices).

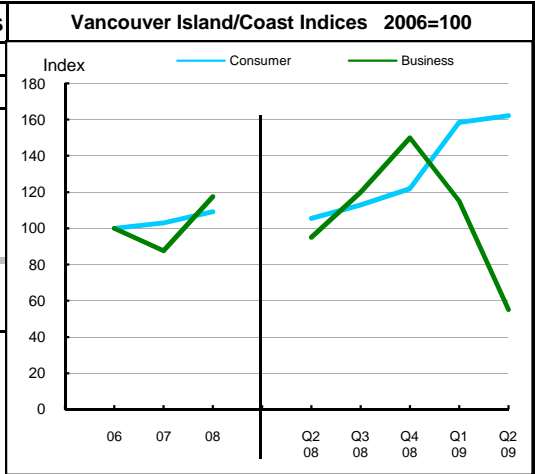


Mount Waddington  
Regional District

7 Business and Consumer Bankruptcies, Quarterly - NEW series						
Year	Vancouver Island/Coast		British Columbia			
	Consumer	Business	Consumer	Business	Consumer	Business
2006	1,368	80	7,020	585		
2007	1,410	70	6,651	470		
2008	1,495	94	7,293	454		
2009						
2010						
YTD-08	692	40	3,335	202		
YTD-09	1,097	34	5,400	232		

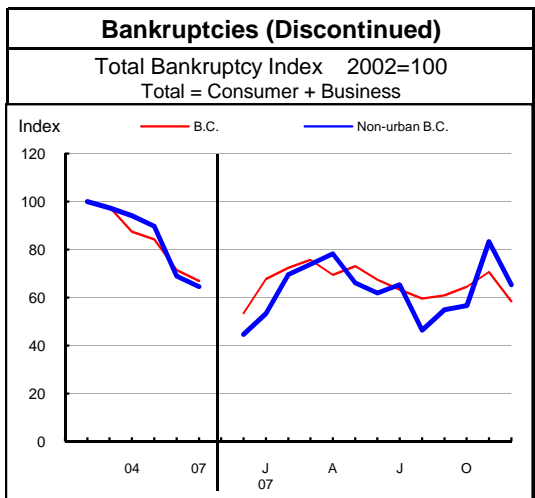
Source: Office of the Superintendent of Bankruptcy, Government of Canada  
Total bankruptcy index includes business and consumer bankruptcies.

Note: Bankruptcy is not a good measure of business failure. Most firms that fail wind down operations and withdraw from business.



8 Incorporations			
Year	Incorporations	Incorporations Index 2003=100	
		Index	
2001	36		
2002	34		
2003	29		
2004	46		
2005	19		
2006	33		
2007	48		
2008	42		
Jan-Sep 08	33		
Jan-Sep 09	32		

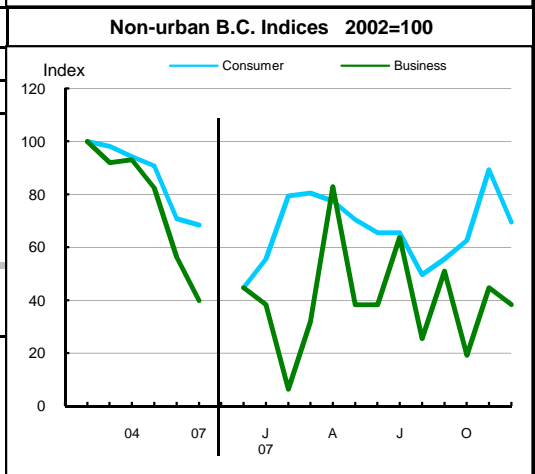
Source: Incorporations - (B.C.) Ministry of Finance



9 Business and Consumer Bankruptcies (Discontinued)				
Year	Non-urban B.C.		B.C.	
	Consumer	Business	Consumer	Business
2003	1,186	173	9,385	1,002
2004	1,139	175	8,378	922
2005	1,097	155	8,173	786
2006	856	106	7,021	587
2007	827	75	6,651	470
Jan-Dec 06	856	106	7,022	587
Jan-Dec 07	827	75	6,651	470

Source: Office of the Superintendent of Bankruptcy, Government of Canada  
Total bankruptcy index includes business and consumer bankruptcies.

Note: Bankruptcy is not a good measure of business failure. Most firms that fail wind down operations and withdraw from business.





Mount Waddington  
Regional District

Dependence on the Safety Net

10 Basic Income Assistance (Basic Income Assistance Recipients in Subject Group as a percent of Reference Group)							11 Employment Insurance (was UI) (EI beneficiaries as a percent of Reference Group)																				
Subject Group (receiving benefits)		All (0-64)	Children <19 yrs in Families	Young Adults (19-24)	'Mid' Group (25-54)	Single Parent Women	Working Age (19-64)	Young Adults (19-24)	'Mid' Group (25-54)	'Older' Workers (55-64)	Note Older Data																
Reference Group		Total Pop. 0-64	Total Pop. <19	Total Pop. 19-24	Total Pop. 25-54	Tot. Female 19-64	Total Pop. 19-64	Total Pop. 19-24	Total Pop. 25-54	Total Pop. 55-64																	
Mt. Waddington Regional District		Sep '07	2.3	3.8	2.6	1.9	1.1	4.1	3.3	4.3	4.2	Mar '07															
		Dec '07	2.9	4.6	3.7	2.5	1.3	2.4	2.0	2.5	2.3	Jun '07															
		Mar '08	3.0	4.9	4.1	2.4	1.2	1.9	2.0	2.0	1.4	Sep '07															
		Jun '08	3.1	5.1	4.5	2.6	1.2	3.7	2.6	4.2	2.8	Dec '07															
		Sep '08	3.0	4.8	3.7	2.7	1.2	4.3	3.0	4.9	3.4	Mar '08															
		Dec '08	3.2	5.3	4.4	2.7	1.2	5.9	4.1	6.6	5.0	Jun '08															
		Mar '09	4.2	7.1	5.9	3.6	1.7	2.7	2.4	3.0	2.1	Sep '08															
		Jun '09	4.3	6.8	5.9	3.7	1.7	7.1	4.8	7.8	6.4	Dec '08															
		Sep '09	3.9	5.8	6.9	3.4	1.6	9.0	9.2	9.8	6.4	Mar '09															
		Duration of Dependence on Income Assistance (As of September 2009)		All* Income Assistance Recipients as % of Total Pop 0-64: Region Compared to B.C.					EI Beneficiaries Aged 19-64 as % of Working Age Population																		
Region		Percent					Percent																				
Total Number of Recipients	358																										
Percent Distribution by Duration		<table border="1"> <tr> <th>Region</th> <th>B.C.</th> </tr> <tr> <td>&lt;1 Year</td> <td>65.3</td> </tr> <tr> <td>1-2 Years</td> <td>18.2</td> </tr> <tr> <td>&gt;2 Years</td> <td>16.4</td> </tr> </table>					Region	B.C.	<1 Year	65.3	1-2 Years	18.2	>2 Years	16.4	<table border="1"> <tr> <th>Region</th> <th>B.C.</th> </tr> <tr> <td>&lt;1 Year</td> <td>63.1</td> </tr> <tr> <td>1-2 Years</td> <td>21.2</td> </tr> <tr> <td>&gt;2 Years</td> <td>15.6</td> </tr> </table>					Region	B.C.	<1 Year	63.1	1-2 Years	21.2	>2 Years	15.6
Region	B.C.																										
<1 Year	65.3																										
1-2 Years	18.2																										
>2 Years	16.4																										
Region	B.C.																										
<1 Year	63.1																										
1-2 Years	21.2																										
>2 Years	15.6																										
Source: Ministry of Children and Family Development administrative files and BC Stats population estimates. These figures include only a subset of those receiving income assistance. Excluded are those on Continuous Assistance (disabled or with persistent multiple barriers to employment, children in the home of a relative, and OAS/seniors. A recipient is defined as 'each person living in a family or living alone that is receiving basic income assistance'. Data does not include Aboriginal people living on Reserve. Note: '-' Data too small to release.							Source: Ministry of Housing and Social Development and BC Stats population estimates.																				
12 Dependence on Basic Income Assistance and/or Employment Insurance (Basic Income Assistance Recipients + Employment Insurance Recipients in Subject Group as a percent of Reference Group)																											
Subject Group (receiving assistance)		All (19-64)	Young Adults (19-24)	'Mid' Group (25-54)	'Older' Group (55-64)	All 'Safety Net' Recipients as % of Total Pop 19-64: Region Compared to B.C.																					
Reference Group		Total Pop. 19-64	Total Pop. 19-24	Total Pop. 25-54	Total Pop. 55-64	Percent																					
Mt. Waddington Regional District		Mar '07	6.4	7.3	6.7	4.9																					
		Jun '07	4.6	5.3	4.9	3.2																					
		Sep '07	3.6	4.7	3.9	2.2																					
		Dec '07	5.9	6.3	6.6	3.5																					
		Mar '08	6.6	6.9	7.3	4.5																					
		Jun '08	8.3	8.6	9.1	6.0																					
		Sep '08	4.9	6.0	5.6	2.6																					
		Dec '08	9.4	8.8	10.4	7.0																					
Mar '09	12.0	14.8	13.2	7.2																							

Note: The EI figures reported above no longer include persons claiming parental/adoption leave. Previous issues of this table did include them.



**Mount Waddington  
Regional District**

**13 Demographics**

Mount Waddington has experienced mainly net outflows over the last twenty years, which has led to a substantial loss of population overall since the mid 1980s. The structure and character of the population has shifted dramatically. It has aged at a faster rate than the province as a whole, adding 12 years to its median age in the last two decades compared to the provincial gain of 7.2 years. Despite this ageing, the median age was very similar to the provincial median in 2007 at just almost 40 years. Although fertility rates show a slight downward trend, they remain extremely high relative to provincial rates. The child dependency ratio (i.e., the ratio of those aged 17 and under to those aged 18 to 64) is higher than the provincial ratio, while the elderly dependency ratio (i.e., the ratio of those aged 65 and over to those aged 18 to 64) is substantially lower than the corresponding provincial ratio. The dependence on male-dominated professions in the resource sectors is the likely reason for the heavy weighting of the sex ratio in favour of males. High fertility and a relatively young age structure ensures that births continue to outnumber deaths although by a diminishing margin. Natural increase has generally been unable to compensate for significant outflows of migrants and growth rates have been negative for much of the last twenty years.

**14 Projection**

The long-term outlook for this region is for consistent net migration outflows, although the size of the outflows is expected to decline over time. Projected gains from natural increase are unlikely to be of sufficient size to offset losses through migration outflows, resulting in a net loss of population during this period. Consequently, the 2036 population in this region is expected to be smaller than the current population by almost 2,000 people. However, as a result of continued population ageing, the structure of the population will likely be quite different, with over 9 dependents for every 10 people of working age.

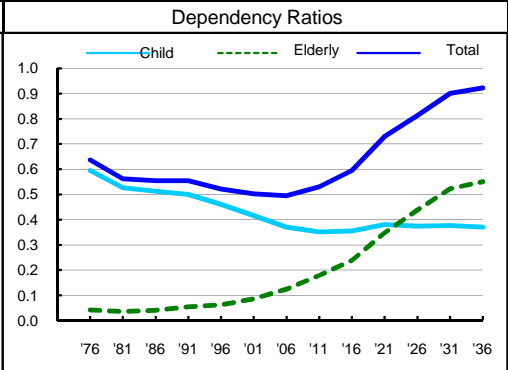
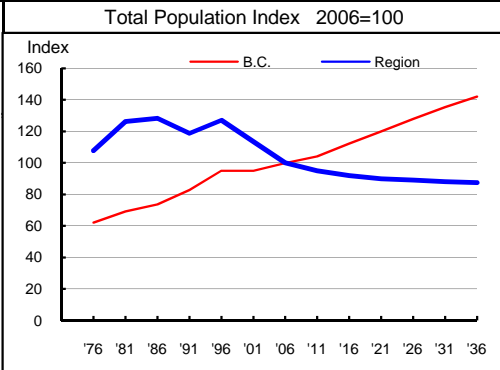
**15 Selected Demographic Characteristics**

Year	Population by age group, Thousands of persons							Households (,000)	Dependency Ratios			Year
	0-4	5-17	18-24	25-44	45-64	65+	All Ages		Child	Elderly	Total	
1976	1.4	3.3	1.9	4.4	1.6	0.3	12.9	3.6	0.595	0.042	0.636	1976
1981	1.7	3.4	2.3	5.6	1.8	0.3	15.1	4.8	0.527	0.035	0.562	1981
1986	1.6	3.5	1.8	6.0	2.1	0.4	15.4	5.2	0.513	0.041	0.554	1986
1991	1.3	3.3	1.3	5.3	2.5	0.5	14.2	5.0	0.500	0.054	0.554	1991
1996	1.2	3.4	1.4	5.4	3.2	0.6	15.2	5.5	0.460	0.061	0.521	1996
2001	0.9	2.9	1.2	4.3	3.5	0.8	13.6	5.2	0.417	0.086	0.502	2001
2006	0.8	2.2	1.0	3.2	3.8	1.0	12.0	4.8	0.370	0.124	0.495	2006
2011	0.7	1.9	1.0	2.6	3.8	1.3	11.4	4.7	0.352	0.179	0.531	2011
2016	0.6	1.8	0.9	2.4	3.5	1.6	11.0	4.8	0.356	0.239	0.595	2016
2021	0.6	1.8	0.8	2.5	2.9	2.2	10.8	4.8	0.381	0.348	0.729	2021
2026	0.6	1.6	0.9	2.5	2.6	2.6	10.7	4.9	0.374	0.438	0.812	2026
2031	0.6	1.5	0.9	2.5	2.2	2.9	10.5	4.9	0.377	0.524	0.901	2031
2036	0.5	1.5	0.8	2.4	2.2	3.0	10.5	5.0	0.371	0.551	0.922	2036

Age groups reflect pre-school, school, advanced education, family formation, mature workers and retired.

Child Dependency:  
(ages 0-17) / (ages 18-64)

Elderly Dependency:  
(ages 65+) / (ages 18-64)



Source: Population data are Projection P-34, run in Summer 2009. Figures are adjusted for Census undercount and are for July 1st of stated year.  
Note: Demographics and Projection notes in Tables 13 and 14 are from Projection P-33, run the Summer 2008.