



**Central Coast
Regional District**

1	General Economy
<p>Forestry, tourism and fishing are the main economic activities of this sparsely population region. Harvesting is the main activity in the forest sector as there are no large processing facilities in the area. The Annual Allowable Cut for the Mid Coast Timber Supply Area was reduced again in 2006. The provincial government has established a park by protecting nearly half a million hectares of coastal rainforest. The fishery has suffered from declining stocks but there are fin fish farms in this area. Tourists continue to be attracted to this area for its outdoor activities, particularly during the summer months.</p>	

The notes above and later in this report on Demographics and Projections are the basis for BC Stats population projection P33 completed in the Summer of 2008. The projections are updated annually to reflect known demographic shifts and economic conditions. Full projections with "Components of Change", "Special Age Groups", "5 Year Age Cohorts by Sex", and accompanying notes are available for B.C., the 8 development regions, the 28 regional districts, the 79 local health areas (LHAs) and a number of "special areas" of local interest which are not part of a province-wide geocoding system. Individual areas, including age and sex detail, are modestly priced. Users requiring only total population projections are able to self serve for free from our population projection page: www.bcstats.gov.bc.ca/data/pop/pop/popproj.asp The full B.C. level projection is available free on the above page.

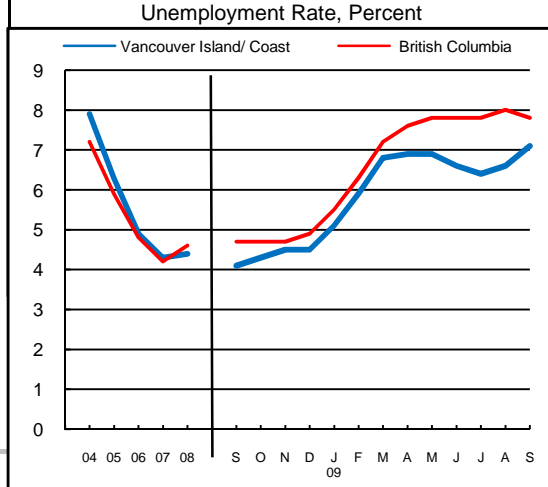
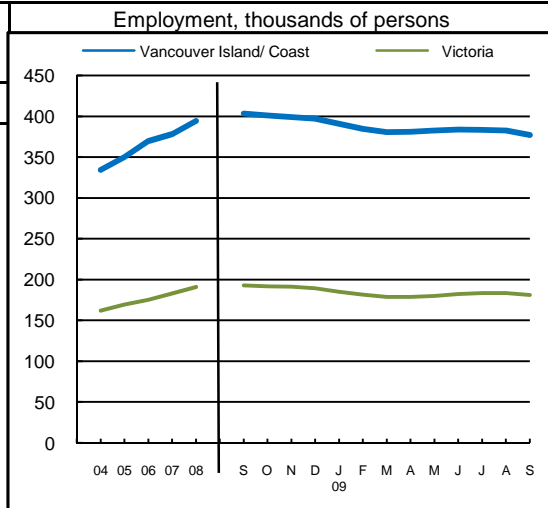
2		Economic Structure - Number of Business Locations, by Sector, by Employment Size, December 2008									
NAICS Code	Industry Sector based on NAICS Canada (North American Industrial Classification System)	Locations With No Employees	Central Coast							British Columbia	
			Firms with Employees							With Employees	
			Less Than 20	20 to 49	50 to 199	200 Plus	All Sizes with Emp.	Percent of Total	Percent of Total	All Sizes	
	Total, All Industries	100	92	15	7	0	114	100.0%	100.0%	175,003	
11	Agric., Forestry, Fishing & Hunt	24	13	6	1	0	20	17.5%	4.0%	7,009	
21	Mining & Oil & Gas Extract.	1	1	0	0	0	1	0.9%	0.6%	1,071	
22	Utilities	-	2	0	0	0	2	1.8%	0.1%	203	
23	Construction	12	5	1	0	0	6	5.3%	12.1%	21,108	
31	Manufacturing (31-33)	4	0	1	0	0	1	0.9%	4.5%	7,879	
41	Wholesale Trade	2	1	0	1	0	2	1.8%	5.9%	10,359	
44	Retail Trade (44-45)	7	12	3	0	0	15	13.2%	11.9%	20,742	
48	Transp. & Warehousing (48-49)	5	11	0	0	0	11	9.6%	4.4%	7,734	
51	Information & Cultural Indust.	2	0	0	1	0	1	0.9%	1.4%	2,412	
52	Finance & Insurance	5	1	0	0	0	1	0.9%	3.8%	6,564	
53	Real Estate & Rental & Leasing	5	2	0	0	0	2	1.8%	4.5%	7,835	
54	Profes'nl, Scientif. & Tech. Srv	9	4	0	0	0	4	3.5%	11.0%	19,278	
55	Mgmt. of Companies & Enter.	2	1	0	0	0	1	0.9%	1.6%	2,818	
56	Admin. & Sup'rt, Waste Mgmt.	3	9	0	0	0	9	7.9%	4.9%	8,513	
61	Educational Services	-	2	1	2	0	5	4.4%	1.4%	2,363	
62	Health Care & Social Assistance	1	3	1	0	0	4	3.5%	8.4%	14,773	
71	Arts, Entertainment & Recreation	2	3	0	0	0	3	2.6%	1.6%	2,873	
72	Accom. & Food Services	10	11	2	0	0	13	11.4%	6.7%	11,639	
81	Other Serv's (ex. Public Admin.)	6	9	0	0	0	9	7.9%	10.9%	19,095	
91	Public Administration	-	2	0	2	0	4	3.5%	0.4%	735	

Source: Statistics Canada, Business Register Division. Note: This table formerly identified **business establishments**.



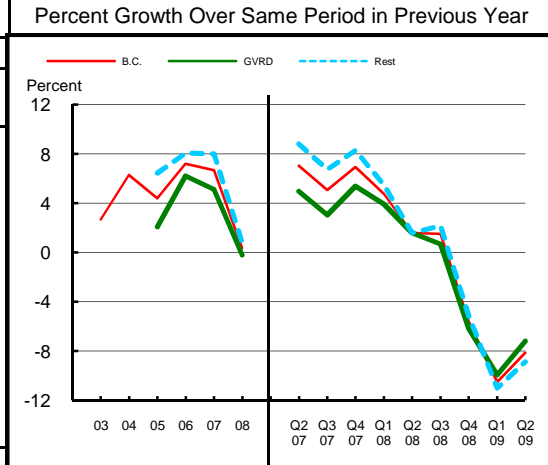
Central Coast
Regional District

3 Employment and Unemployment Rate, monthly data are 3-month moving average, actual, ending in stated month							
	Vancouver Island/ Coast		Victoria		British Columbia		
	Emp. ('000)	Unemp. %	Emp. ('000)	Unemp. %	Emp. ('000)	Unemp. %	
1999	330.0	7.9	155.3	6.6	1,894.4	8.3	
2000	327.4	7.8	155.3	6.7	1,931.3	7.1	
2001	307.3	9.2	150.8	6.3	1,921.6	7.7	
2002	317.4	8.7	155.7	7.0	1,965.0	8.5	
2003	319.1	8.6	158.7	6.2	2,014.7	8.0	
2004	334.2	7.9	162.0	5.3	2,062.7	7.2	
2005	350.0	6.3	169.3	4.5	2,130.5	5.9	
2006	369.5	4.9	175.2	3.7	2,195.5	4.8	
2007	378.3	4.3	182.9	3.3	2,266.3	4.2	
2008	394.2	4.4	190.9	3.3	2,314.3	4.6	
2008 Jan	375.8	4.5	186.2	3.0	2,286.5	4.1	
2008 Feb	378.0	5.0	185.0	3.3	2,278.9	4.2	
2008 Mar	380.4	5.2	186.8	3.2	2,284.9	4.4	
2008 Apr	386.9	4.6	190.0	2.8	2,295.0	4.4	
2008 May	391.4	4.3	193.8	2.7	2,313.3	4.5	
2008 Jun	395.9	3.9	195.0	2.8	2,329.8	4.4	
2008 Jul	401.8	3.8	195.1	3.3	2,345.0	4.5	
2008 Aug	403.3	3.8	194.0	3.7	2,350.7	4.6	
2008 Sep	403.3	4.1	192.8	3.7	2,337.7	4.7	
2008 Oct	401.0	4.3	191.8	3.8	2,325.3	4.7	
2008 Nov	399.0	4.5	191.2	3.4	2,312.5	4.7	
2008 Dec	397.2	4.5	189.2	3.6	2,304.8	4.9	
2009 Jan	390.9	5.1	184.9	3.9	2,278.4	5.5	
2009 Feb	384.4	5.9	181.3	4.9	2,251.1	6.3	
2009 Mar	380.7	6.8	178.8	5.5	2,227.5	7.2	
2009 Apr	381.0	6.9	178.9	6.0	2,229.0	7.6	
2009 May	382.5	6.9	180.1	6.2	2,243.1	7.8	
2009 Jun	383.5	6.6	182.4	6.2	2,264.6	7.8	
2009 Jul	383.1	6.4	183.4	6.1	2,275.9	7.8	
2009 Aug	382.4	6.6	183.4	6.1	2,280.5	8.0	
2009 Sep	376.9	7.1	181.1	6.6	2,275.8	7.8	
2009 Oct							
2009 Nov							
2009 Dec							
Average:							
ytd average	Jan-Sep08	393.2	4.4	191.5	3.2	2,317.5	4.5
based on	Jan-Sep09	380.2	6.8	180.8	6.1	2,256.0	7.6
actual data	% Change	-3.3		-5.6		-2.7	



Source: Labour Force Survey, Statistics Canada. Sub-provincial regions are development regions or census metropolitan areas.

4 Retail Sales - based on Statistics Canada monthly survey						
Year or Year/Quarter	\$ millions of retail sales			Percent change on year ago		
	B.C.	Greater Vancouver	Rest of Province	B.C.	Greater Vancouver	Rest of Province
2004	47,216.6	22,243.6	24,973.0	6.3	n/a	n/a
2005	49,286.3	22,702.6	26,583.7	4.4	2.1	6.4
Annual data 2006	52,837.1	24,110.2	28,726.9	7.2	6.2	8.1
2007	56,365.4	25,342.8	31,022.6	6.7	5.1	8.0
2008	56,562.4	25,290.5	31,271.8	0.3	-0.2	0.8
Quarterly data 08 2	14,749.1	6,626.3	8,122.8	1.6	1.6	1.6
08 3	14,923.3	6,466.4	8,456.9	1.5	0.7	2.2
08 4	14,053.2	6,340.4	7,712.7	-5.6	-6.2	-5.2
09 1	11,485.1	5,274.5	6,210.5	-10.5	-10.0	-11.0
09 2	13,550.1	6,150.0	7,400.1	-8.1	-7.2	-8.9



Source: B.C. & GVRD data - Statistics Canada, monthly survey (CANSIM 080-0015).



Central Coast
Regional District

Was 5 **Manufacturing Principal Statistics - Search at www.made-in-bc.ca for local firms, products and more**

This table is discontinued. Sub-provincial manufacturing principal statistics are no longer being produced.

5		Tourism Room Revenue (\$ Thousands)						Tourism Room Revenue Index 2003=100	
Central Coast Regional District	Year	Total/YTD	Q1	Q2	Q3	Q4	Index		
		2005	x	na()	na()	na()	na()	200	
	2006	x	na()	na()	na()	na()	180		
	2007	n/a	na()	na()	na()	na()	160		
	2008	n/a	na()	na()	na()	na()	140		
	2009	n/a	na()	na()	na()	na()	120		
British Columbia	2005	1,681,563.6	351,779.6	404,639.8	610,273.7	314,870.6	100		
	2006	1,807,608.7	366,165.1	450,747.7	652,476.4	338,219.5	80		
	2007	1,963,958.7	412,949.3	488,493.9	697,545.2	364,970.3	60		
	2008	1,977,424.9	435,223.9	503,276.7	687,708.3	351,215.9	40		
	2009	802,329.6	378,880.1	423,449.6			20		
		2008 Room Revenue by Accommodation Type (\$Thousands %Share)							
TOTAL	1,907.0	100.0%							

Source: Hotel tax database maintained by Consumer Taxation Branch, Ministry of Small Business and Revenue. Published in detail monthly by BC Stats.

All room revenue data has been revised. For an explanation, see our periodical called *Tourism Sector Monitor*, April and May issues of 2009.
Link to explanation of changes: http://www.bcstats.gov.bc.ca/pubs/pr_tour.asp

6		Building Permits						Total Permits Index 2003=100	
Year	Total Building Permits	Non Residential				Residential		Index	
		Total Non Res.	Industrial	Commercial	Institutional & Gov't	Units	Units	Index	
2001	n/a	0.0	n/a	n/a	n/a	n/a	n/a	250	
2002	n/a	0.0	n/a	n/a	n/a	n/a	n/a	200	
2003	n/a	0.0	n/a	n/a	n/a	n/a	n/a	150	
2004	n/a	0.0	n/a	n/a	n/a	n/a	n/a	100	
2005	n/a	0.0	n/a	n/a	n/a	n/a	n/a	50	
2006	n/a	0.0	n/a	n/a	n/a	n/a	n/a	0	
2007	n/a	0.0	n/a	n/a	n/a	n/a	n/a		
2008	n/a	0.0	n/a	n/a	n/a	n/a	n/a		
Jan-Aug 08	n/a	0.0	n/a	n/a	n/a	n/a	n/a	01 02 03 04 05 06 07 08	
Jan-Aug 09	n/a	0.0	n/a	n/a	n/a	n/a	n/a	A S O N D J F M A M J J A	

Not all projects require a building permit, and not all municipalities & regions report. Latest month preliminary, previous month is revised.
Source: Statistics Canada (data collected from municipal and Regional District offices).

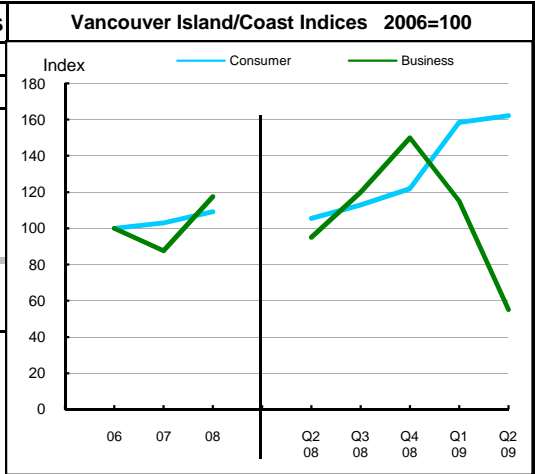


Central Coast
Regional District

7 Business and Consumer Bankruptcies, Quarterly - NEW series						
Year	Vancouver Island/Coast		British Columbia			
	Consumer	Business	Consumer	Business	Consumer	Business
2006	1,368	80	7,020	585		
2007	1,410	70	6,651	470		
2008	1,495	94	7,293	454		
2009						
2010						
YTD-08	692	40	3,335	202		
YTD-09	1,097	34	5,400	232		

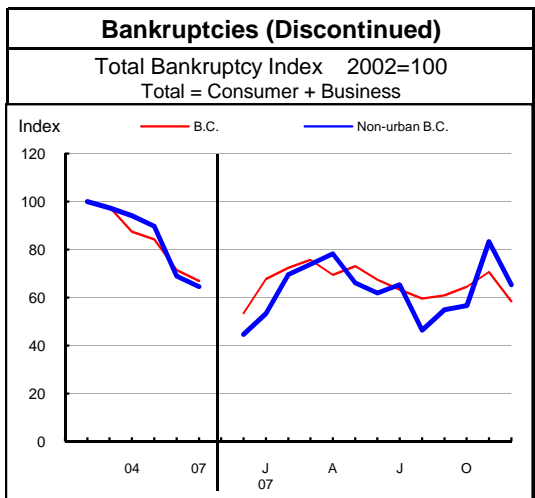
Source: Office of the Superintendent of Bankruptcy, Government of Canada
Total bankruptcy index includes business and consumer bankruptcies.

Note: Bankruptcy is not a good measure of business failure. Most firms that fail wind down operations and withdraw from business.



8 Incorporations			
Year	Incorporations	Incorporations Index 2003=100	
		Index 6,000	
2001	4		
2002	0		
2003	1		
2004	0		
2005	0		
2006	2		
2007	2		
2008	8		
Jan-Sep 08	7		
Jan-Sep 09	5		

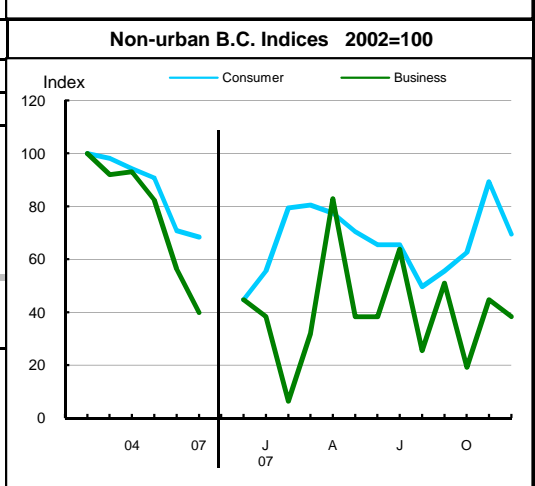
Source: Incorporations - (B.C.) Ministry of Finance



9 Business and Consumer Bankruptcies (Discontinued)				
Year	Non-urban B.C.		B.C.	
	Consumer	Business	Consumer	Business
2003	1,186	173	9,385	1,002
2004	1,139	175	8,378	922
2005	1,097	155	8,173	786
2006	856	106	7,021	587
2007	827	75	6,651	470
Jan-Dec 06	856	106	7,022	587
Jan-Dec 07	827	75	6,651	470

Source: Office of the Superintendent of Bankruptcy, Government of Canada
Total bankruptcy index includes business and consumer bankruptcies.

Note: Bankruptcy is not a good measure of business failure. Most firms that fail wind down operations and withdraw from business.





Central Coast
Regional District

Dependence on the Safety Net

10 Basic Income Assistance (Basic Income Assistance Recipients in Subject Group as a percent of Reference Group)		11 Employment Insurance (was UI) (EI beneficiaries as a percent of Reference Group)														
Subject Group (receiving benefits)		All (0-64)	Children <19 yrs in Families	Young Adults (19-24)	'Mid' Group (25-54)	Single Parent Women	Working Age (19-64)	Young Adults (19-24)	'Mid' Group (25-54)	'Older' Workers (55-64)	Note Older Data					
Reference Group		Total Pop. 0-64	Total Pop. <19	Total Pop. 19-24	Total Pop. 25-54	Tot. Female 19-64	Total Pop. 19-64	Total Pop. 19-24	Total Pop. 25-54	Total Pop. 55-64						
Central Coast Regional District	Sep '07	-	-	-	-	-	13.2	15.7	12.7	13.4	Mar '07					
	Dec '07	1.8	-	-	1.0	1.1	4.1	-	4.9	-	Jun '07					
	Mar '08	1.9	-	-	1.2	1.3	3.9	-	4.2	-	Sep '07					
	Jun '08	-	-	-	1.6	1.4	9.4	5.0	10.2	9.4	Dec '07					
	Sep '08	-	-	-	1.8	1.5	8.6	5.2	9.3	8.2	Mar '08					
	Dec '08	-	-	-	1.8	-	10.2	11.3	11.6	4.4	Jun '08					
	Mar '09	-	-	-	2.1	-	4.3	-	4.8	-	Sep '08					
	Jun '09	-	-	-	-	-	6.0	-	6.2	-	Dec '08					
	Sep '09	-	-	-	2.0	-	6.8	-	7.2	-	Mar '09					
	Duration of Dependence on Income Assistance (As of September 2009)		All* Income Assistance Recipients as % of Total Pop 0-64: Region Compared to B.C.					EI Beneficiaries Aged 19-64 as % of Working Age Population								
Region		Percent					Percent									
B.C.		Region					B.C.					Region				
Total Number of Recipients	-	72,592														
Percent Distribution by Duration																
<1 Year	-	65.3														
1-2 Years	-	18.2														
>2 Years	-	16.4														
Source: Ministry of Children and Family Development administrative files and BC Stats population estimates. These figures include only a subset of those receiving income assistance. Excluded are those on Continuous Assistance (disabled or with persistent multiple barriers to employment, children in the home of a relative, and OAS/seniors. A recipient is defined as 'each person living in a family or living alone that is receiving basic income assistance'. Data does not include Aboriginal people living on Reserve. Note: '-' Data too small to release.							Source: Ministry of Housing and Social Development and BC Stats population estimates.									
12 Dependence on Basic Income Assistance and/or Employment Insurance (Basic Income Assistance Recipients + Employment Insurance Recipients in Subject Group as a percent of Reference Group)		All 'Safety Net' Recipients as % of Total Pop 19-64: Region Compared to B.C.														
Subject Group (receiving assistance)		All (19-64)	Young Adults (19-24)	'Mid' Group (25-54)	'Older' Group (55-64)	Percent										
Reference Group		Total Pop. 19-64	Total Pop. 19-24	Total Pop. 25-54	Total Pop. 55-64	B.C.					Region					
Central Coast Regional District	Mar '07	14.5	-	14.3	-											
	Jun '07	-	-	-	-											
	Sep '07	-	-	-	-											
	Dec '07	10.2	-	11.2	-											
	Mar '08	9.4	-	10.5	-											
	Jun '08	-	-	13.3	-											
	Sep '08	-	-	6.6	-											
	Dec '08	-	-	7.8	-											
	Mar '09	-	-	9.3	-											

Note: The EI figures reported above no longer include persons claiming parental/adoption leave. Previous issues of this table did include them.



**Central Coast
Regional District**

13 Demographics

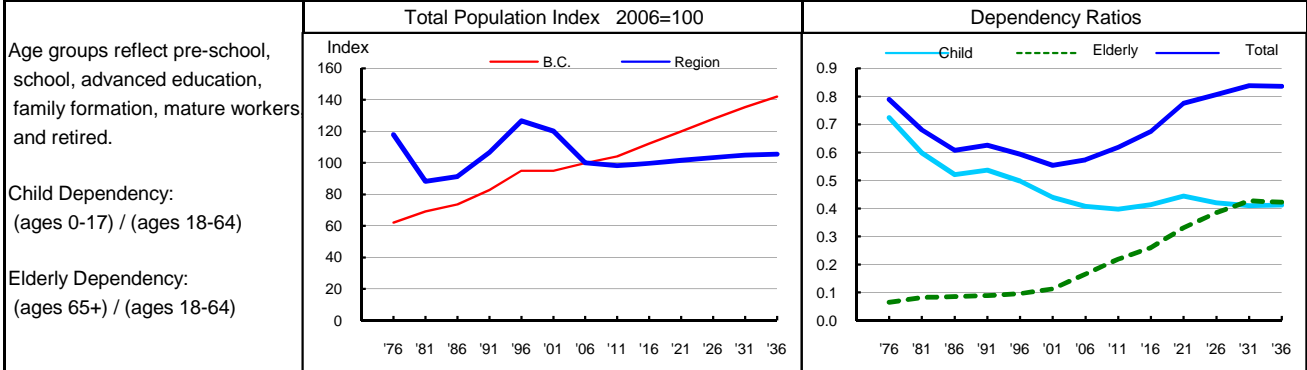
The largely First Nations population of the Central Coast has seen minimal growth over the last twenty years. However, the structure of the population has shifted as it has aged, adding over nine years to its median age since the mid 1980s. Despite this ageing, Central Coast has a very young population. In 2007, its median age was almost 3.5 years younger than the median age of British Columbia as a whole. Fertility is extremely high with rates around or above replacement (TFR of 2100) for most of the last twenty years. High fertility results in a large number of children in the population. The ratio of children (aged 17 and under) to working age population (aged 18 to 64) is much higher than the provincial ratio. On the other hand, the ratio of elderly (aged 65 and over) to working age population is much lower than the provincial ratio, despite a steady increase since the mid 1980s. There are many more men than women in this area, in contrast to the province as a whole, where the reverse is the case. The median age of death, at 64 years, is much lower than for the provincial figure of 80 years. This is likely due to a combination of factors, including the sex ratio bias in favour of males and the concentration of First Nations people in the area (who tend to have lower life expectancies than non-First Nations). High fertility and a young age structure ensures that births continue to outnumber deaths by a significant margin. However, natural increase is too small to compensate for larger net outflows and the region has had a net loss of population since 1997.

14 Projection

Natural increase should remain positive until late in the projection period after which deaths will out number births. Overall, the region is projected to experience net outflows, although the magnitude of these outflows will be negligible after the first few years of the projection. These outflows, along with decreasing natural increase, will result in minimal change in the size of the population between 2007 and 2036. However, the structure of the population will shift as ageing continues. Overall dependency will increase to nearly 8 dependents for every 10 people of working age, but by 2036.

15 Selected Demographic Characteristics

Year	Population by age group, Thousands of persons							Households (,000)	Dependency Ratios			Year
	0-4	5-17	18-24	25-44	45-64	65+	All Ages		Child	Elderly	Total	
1976	0.4	1.1	0.5	1.1	0.5	0.1	3.8	1.2	0.724	0.065	0.789	1976
1981	0.3	0.7	0.4	0.9	0.4	0.1	2.8	0.9	0.598	0.082	0.680	1981
1986	0.3	0.6	0.4	1.0	0.5	0.2	2.9	0.9	0.521	0.086	0.607	1986
1991	0.3	0.8	0.3	1.2	0.6	0.2	3.4	1.1	0.537	0.089	0.625	1991
1996	0.3	0.9	0.4	1.4	0.8	0.2	4.1	1.2	0.499	0.095	0.594	1996
2001	0.3	0.8	0.3	1.3	0.9	0.3	3.9	1.1	0.440	0.114	0.553	2001
2006	0.2	0.6	0.3	0.9	0.9	0.3	3.2	1.3	0.408	0.165	0.573	2006
2011	0.2	0.5	0.2	0.8	0.9	0.4	3.2	1.3	0.398	0.219	0.617	2011
2016	0.2	0.6	0.2	0.7	0.9	0.5	3.2	1.3	0.414	0.260	0.675	2016
2021	0.2	0.6	0.2	0.7	0.9	0.6	3.3	1.4	0.445	0.331	0.776	2021
2026	0.2	0.6	0.3	0.7	0.8	0.7	3.3	1.4	0.421	0.386	0.807	2026
2031	0.2	0.5	0.3	0.7	0.8	0.8	3.4	1.5	0.411	0.428	0.838	2031
2036	0.2	0.5	0.3	0.8	0.7	0.8	3.4	1.5	0.413	0.423	0.836	2036



Source: Population data are Projection P-34, run in Summer 2009. Figures are adjusted for Census undercount and are for July 1st of stated year.
Note: Demographics and Projection notes in Tables 13 and 14 are from Projection P-33, run the Summer 2008.