



**Kitimat-Stikine
Regional District**

1	General Economy
<p>Municipalities in Regional District: Hazelton, Kitimat, New Hazelton, Stewart, Terrace</p> <p>The main economic activities include forestry, mining, energy and fishing. Construction of the large Galore Creek gold and copper mine was suspended in late 2007 pending further evaluation. The Eskay Creek gold and copper mine located 80 km North of Stewart completed mining in March 2008. The Red Chris copper and gold mine is also a possible development in the area. The area has a few mills, some of which have announced closures or output reductions. There has been construction on several hydro projects in Snow Country and several more are proposed. Kitimat is currently expecting several developments linked to its port. They include a condensate pipeline and a LNG terminal and pipeline. The annual allowable cuts for the timber supply areas in the region have fallen over the past decade in general. There is proposed hydro project upgrades in the area as well as proposed pipeline projects.</p>	

The notes above and later in this report on Demographics and Projections are the basis for BC Stats population projection P33 completed in the Summer of 2008. The projections are updated annually to reflect known demographic shifts and economic conditions. Full projections with "Components of Change", "Special Age Groups", "5 Year Age Cohorts by Sex", and accompanying notes are available for B.C., the 8 development regions, the 28 regional districts, the 79 local health areas (LHAs) and a number of "special areas" of local interest which are not part of a province-wide geocoding system. Individual areas, including age and sex detail, are modestly priced. Users requiring only total population projections are able to self serve for free from our population projection page: www.bcstats.gov.bc.ca/data/pop/pop/popproj.asp The full B.C. level projection is available free on the above page.

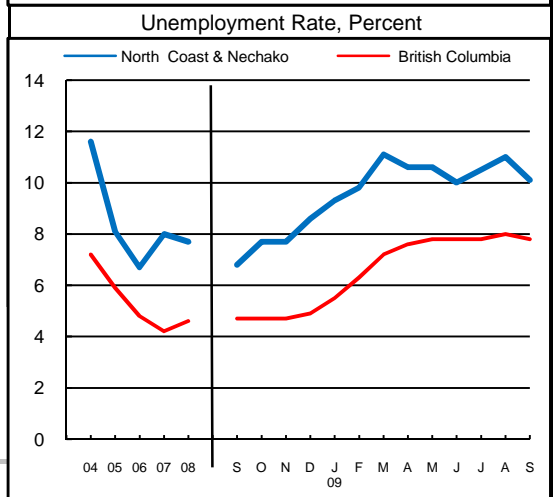
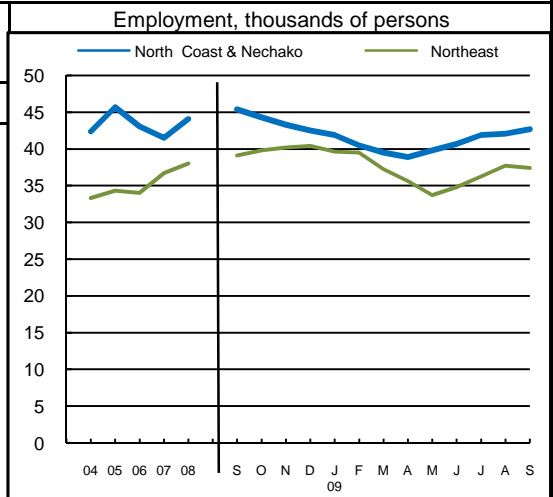
2	Economic Structure - Number of Business Locations, by Sector, by Employment Size, December 2008									
NAICS Code	Industry Sector based on NAICS Canada (North American Industrial Classification System)	Locations With No Employees	Kitimat-Stikine						British Columbia	
			Firms with Employees						With Employees	
			Less Than 20	20 to 49	50 to 199	200 Plus	All Sizes with Emp.	Percent of Total	Percent of Total	All Sizes
11	Total, All Industries	793	1,087	113	50	6	1,256	100.0%	100.0%	175,003
	Agric., Forestry, Fishing & Hunt	124	101	3	2	0	106	8.4%	4.0%	7,009
21	Mining & Oil & Gas Extract.	5	4	1	1	0	6	0.5%	0.6%	1,071
22	Utilities	2	3	1	1	0	5	0.4%	0.1%	203
23	Construction	95	143	8	1	0	152	12.1%	12.1%	21,108
31	Manufacturing (31-33)	13	26	4	3	2	35	2.8%	4.5%	7,879
41	Wholesale Trade	21	58	5	1	0	64	5.1%	5.9%	10,359
44	Retail Trade (44-45)	65	155	19	7	0	181	14.4%	11.9%	20,742
48	Transp. & Warehousing (48-49)	74	75	6	3	0	84	6.7%	4.4%	7,734
51	Information & Cultural Indus.	2	14	4	0	0	18	1.4%	1.4%	2,412
52	Finance & Insurance	38	22	8	2	0	32	2.5%	3.8%	6,564
53	Real Estate & Rental & Leasing	102	42	1	1	0	44	3.5%	4.5%	7,835
54	Profes'nl, Scientif. & Tech. Srv	65	66	5	0	0	71	5.7%	11.0%	19,278
55	Mgmt. of Companies & Enter.	47	7	3	0	0	10	0.8%	1.6%	2,818
56	Admin. & Sup'rt, Waste Mgmt.	24	45	6	1	0	52	4.1%	4.9%	8,513
61	Educational Services	9	8	5	1	3	17	1.4%	1.4%	2,363
62	Health Care & Social Assistance	20	99	8	8	1	116	9.2%	8.4%	14,773
71	Arts, Entertainment & Recreation	15	22	3	1	0	26	2.1%	1.6%	2,873
72	Accom. & Food Services	29	72	11	6	0	89	7.1%	6.7%	11,639
81	Other Serv's (ex. Public Admin.)	43	116	5	0	0	121	9.6%	10.9%	19,095
91	Public Administration	-	9	7	11	0	27	2.1%	0.4%	735

Source: Statistics Canada, Business Register Division. Note: This table formerly identified **business establishments**.



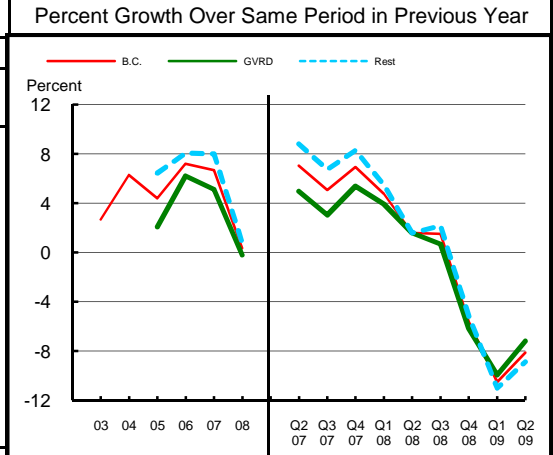
**Kitimat-Stikine
Regional District**

3 Employment and Unemployment Rate, monthly data are 3-month moving average, actual, ending in stated month							
	North Coast & Nechako		Northeast		British Columbia		
	Emp. ('000)	Unemp. %	Emp. ('000)	Unemp. %	Emp. ('000)	Unemp. %	
1999	46.7	8.8	30.7	8.9	1,894.4	8.3	
2000	47.3	10.2	31.8	5.9	1,931.3	7.1	
2001	46.6	11.2	32.5	6.1	1,921.6	7.7	
2002	44.9	12.6	33.2	9.0	1,965.0	8.5	
2003	44.8	11.3	34.9	6.4	2,014.7	8.0	
2004	42.4	11.6	33.3	5.4	2,062.7	7.2	
2005	45.7	8.1	34.3	4.7	2,130.5	5.9	
2006	43.1	6.7	34.0	NA	2,195.5	4.8	
2007	41.5	8.0	36.7	NA	2,266.3	4.2	
2008	44.1	7.7	38.0	4.8	2,314.3	4.6	
2008 Jan	41.5	8.2	36.5	NA	2,286.5	4.1	
2008 Feb	42.1	7.3	35.8	NA	2,278.9	4.2	
2008 Mar	43.3	7.1	35.6	NA	2,284.9	4.4	
2008 Apr	44.3	7.9	35.8	4.3	2,295.0	4.4	
2008 May	44.4	8.6	35.8	5.0	2,313.3	4.5	
2008 Jun	45.4	8.5	37.0	5.9	2,329.8	4.4	
2008 Jul	45.8	7.5	37.9	6.2	2,345.0	4.5	
2008 Aug	46.5	7.6	38.6	6.3	2,350.7	4.6	
2008 Sep	45.4	6.8	39.1	5.8	2,337.7	4.7	
2008 Oct	44.3	7.7	39.8	5.0	2,325.3	4.7	
2008 Nov	43.3	7.7	40.2	4.5	2,312.5	4.7	
2008 Dec	42.5	8.6	40.4	3.6	2,304.8	4.9	
2009 Jan	41.9	9.3	39.6	4.6	2,278.4	5.5	
2009 Feb	40.5	9.8	39.5	4.6	2,251.1	6.3	
2009 Mar	39.5	11.1	37.2	6.5	2,227.5	7.2	
2009 Apr	38.9	10.6	35.6	6.5	2,229.0	7.6	
2009 May	39.8	10.6	33.7	8.4	2,243.1	7.8	
2009 Jun	40.7	10.0	34.8	7.7	2,264.6	7.8	
2009 Jul	41.9	10.5	36.2	7.9	2,275.9	7.8	
2009 Aug	42.1	11.0	37.7	8.3	2,280.5	8.0	
2009 Sep	42.7	10.1	37.4	7.9	2,275.8	7.8	
2009 Oct							
2009 Nov							
2009 Dec							
Average:							
ytd average	Jan-Sep08	44.7	7.4	37.2	NA	2,317.5	4.5
based on	Jan-Sep09	40.9	10.4	36.7	7.4	2,256.0	7.6
actual data	% Change	-8.4		-1.5		-2.7	



Source: Labour Force Survey, Statistics Canada. Sub-provincial regions are development regions or census metropolitan areas.

4 Retail Sales - based on Statistics Canada monthly survey							Percent Growth Over Same Period in Previous Year						
Year or Year/Quarter	\$ millions of retail sales			Percent change on year ago			B.C.	Greater Vancouver	Rest of Province	B.C.	Greater Vancouver	Rest of Province	
	B.C.	Greater Vancouver	Rest of Province	B.C.	Greater Vancouver	Rest of Province							
2004	47,216.6	22,243.6	24,973.0	6.3	n/a	n/a							
2005	49,286.3	22,702.6	26,583.7	4.4	2.1	6.4							
Annual data 2006	52,837.1	24,110.2	28,726.9	7.2	6.2	8.1							
2007	56,365.4	25,342.8	31,022.6	6.7	5.1	8.0							
2008	56,562.4	25,290.5	31,271.8	0.3	-0.2	0.8							
Quarterly data 08 2	14,749.1	6,626.3	8,122.8	1.6	1.6	1.6							
08 3	14,923.3	6,466.4	8,456.9	1.5	0.7	2.2							
08 4	14,053.2	6,340.4	7,712.7	-5.6	-6.2	-5.2							
09 1	11,485.1	5,274.5	6,210.5	-10.5	-10.0	-11.0							
09 2	13,550.1	6,150.0	7,400.1	-8.1	-7.2	-8.9							



Source: B.C. & GVRD data - Statistics Canada, monthly survey (CANSIM 080-0015).



**Kitimat-Stikine
Regional District**

Was 5 **Manufacturing Principal Statistics - Search at www.made-in-bc.ca for local firms, products and more**

This table is discontinued. Sub-provincial manufacturing principal statistics are no longer being produced.

5		Tourism Room Revenue (\$ Thousands)					Tourism Room Revenue Index 2003=100	
Year	Total/YTD	Q1	Q2	Q3	Q4	Index		
						B.C.	Region	
Kitimat-Stikine	2005	9,251.8	1,657.6	2,363.4	3,486.5	1,744.3		
Regional District	2006	9,642.3	1,559.6	2,517.5	3,619.0	1,946.2		
	2007	11,175.4	1,798.2	2,830.6	4,275.9	2,270.7		
	2008	11,403.0	2,203.8	2,767.5	3,945.5	2,486.2		
	2009	4,462.7	2,014.4	2,448.3				
British Columbia	2005	1,681,563.6	351,779.6	404,639.8	610,273.7	314,870.6		
	2006	1,807,608.7	366,165.1	450,747.7	652,476.4	338,219.5		
	2007	1,963,958.7	412,949.3	488,493.9	697,545.2	364,970.3		
	2008	1,977,424.9	435,223.9	503,276.7	687,708.3	351,215.9		
	2009	802,329.6	378,880.1	423,449.6				
2008 Room Revenue by Accommodation Type (\$Thousands %Share)								
TOTAL	11,403.0	100.0%						
Hotels	5,380.0	47.2%						
*City of Terrace	4,714.0	41.3%						

asterisk before location denotes sub-area detail

Source: Hotel tax database maintained by Consumer Taxation Branch, Ministry of Small Business and Revenue. Published in detail monthly by BC Stats.

All room revenue data has been revised. For an explanation, see our periodical called *Tourism Sector Monitor*, April and May issues of 2009.
Link to explanation of changes: http://www.bcstats.gov.bc.ca/pubs/pr_tour.asp

6		Building Permits					Total Permits Index 2003=100	
Year	Total Building Permits	Non Residential				Residential	Units	Index
		Total Non Res.	Industrial	Commercial	Institutional & Gov't			
		<-- \$ Millions -->						
2001	17.1	14.7	0.1	2.5	12.1	2.4	8	
2002	15.4	13.5	0.2	3.1	10.2	1.8	4	
2003	12.6	9.3	0.3	7.5	1.5	3.3	10	
2004	7.5	5.4	0.0	2.6	2.8	2.2	7	
2005	13.7	10.5	1.9	5.4	3.2	3.2	23	
2006	22.5	11.8	0.2	10.7	0.9	10.7	44	
2007	34.5	21.1	0.5	8.6	12.1	13.4	53	
2008	33.9	16.9	1.9	13.6	1.4	16.9	67	
Jan-Aug 08	28.0	13.5	0.3	11.8	1.3	14.5	59	
Jan-Aug 09	11.6	5.7	0.4	3.8	1.5	5.9	19	

Not all projects require a building permit, and not all municipalities & regions report. Latest month preliminary, previous month is revised.
Source: Statistics Canada (data collected from municipal and Regional District offices).

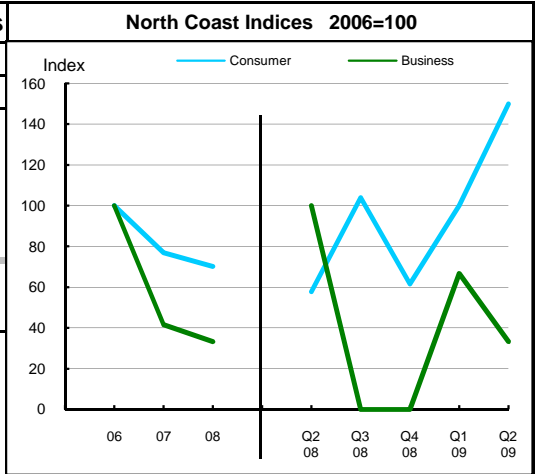


**Kitimat-Stikine
Regional District**

7 Business and Consumer Bankruptcies, Quarterly - NEW series						
Year	North Coast		British Columbia		Consumer	Business
	Consumer	Business	Consumer	Business		
2006	104	12	7,020	585		
2007	80	5	6,651	470		
2008	73	4	7,293	454		
2009						
2010						
YTD-08	30	4	3,335	202		
YTD-09	65	3	5,400	232		

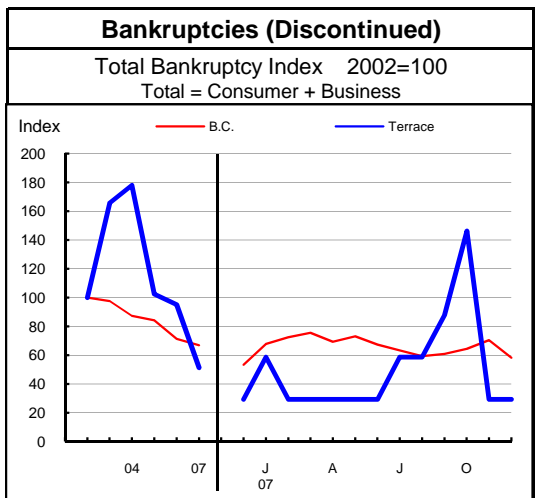
Source: Office of the Superintendent of Bankruptcy, Government of Canada
Total bankruptcy index includes business and consumer bankruptcies.

Note: Bankruptcy is not a good measure of business failure. Most firms that fail wind down operations and withdraw from business.



8 Incorporations			
Year	Incorporations	Incorporations Index 2003=100	
		B.C.	Region
2001	47		
2002	45		
2003	47		
2004	40		
2005	58		
2006	60		
2007	70		
2008	64		
Jan-Sep 08	50		
Jan-Sep 09	32		

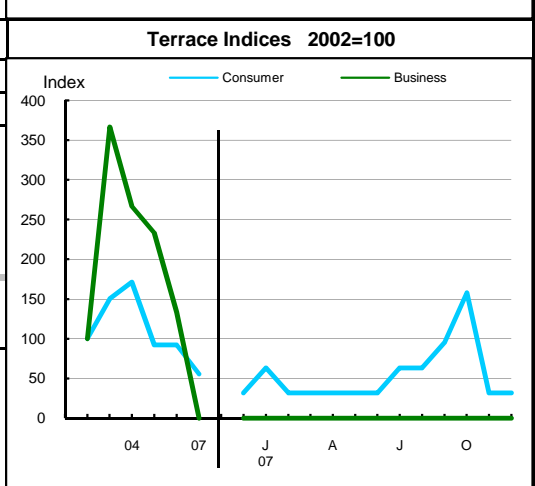
Source: Incorporations - (B.C.) Ministry of Finance



9 Business and Consumer Bankruptcies (Discontinued)						
Year	Terrace		Kitimat		B.C.	
	Consumer	Business	Consumer	Business	Consumer	Business
2003	57	11	13	4	9,385	1,002
2004	65	8	21	2	8,378	922
2005	35	7	20	4	8,173	786
2006	35	4	16	3	7,021	587
2007	21	0	18	1	6,651	470
Jan-Dec 06	35	4	16	3	7,022	587
Jan-Dec 07	21	0	18	1	6,651	470

Source: Office of the Superintendent of Bankruptcy, Government of Canada
Total bankruptcy index includes business and consumer bankruptcies.

Note: Bankruptcy is not a good measure of business failure. Most firms that fail wind down operations and withdraw from business.





**Kitimat-Stikine
Regional District**

Dependence on the Safety Net

10 Basic Income Assistance (Basic Income Assistance Recipients in Subject Group as a percent of Reference Group)							11 Employment Insurance (was UI) (EI beneficiaries as a percent of Reference Group)									
Subject Group (receiving benefits)		All (0-64)	Children <19 yrs in Families	Young Adults (19-24)	'Mid' Group (25-54)	Single Parent Women	Working Age (19-64)	Young Adults (19-24)	'Mid' Group (25-54)	'Older' Workers (55-64)	Note Older Data					
Reference Group		Total Pop. 0-64	Total Pop. <19	Total Pop. 19-24	Total Pop. 25-54	Tot. Female 19-64	Total Pop. 19-64	Total Pop. 19-24	Total Pop. 25-54	Total Pop. 55-64						
Kitimat-Stikine Regional District	Sep '07	3.9	6.1	5.8	3.1	1.9	4.8	5.3	5.2	3.1	Mar '07					
	Dec '07	3.9	6.0	5.9	3.2	3.1	2.9	3.1	3.2	1.7	Jun '07					
	Mar '08	4.1	6.4	5.4	3.4	3.1	2.6	2.5	3.0	1.6	Sep '07					
	Jun '08	4.3	6.9	5.7	3.5	3.0	4.6	4.4	5.1	3.1	Dec '07					
	Sep '08	4.2	7.0	5.5	3.3	2.9	5.6	5.2	6.2	4.0	Mar '08					
	Dec '08	4.4	7.1	5.9	3.6	2.1	7.2	6.3	8.1	4.9	Jun '08					
	Mar '09	4.7	7.2	6.8	3.9	2.2	2.8	2.4	3.3	1.5	Sep '08					
	Jun '09	4.8	7.3	7.3	4.0	2.3	5.3	5.3	5.9	3.1	Dec '08					
	Sep '09	5.0	7.8	7.4	4.2	2.4	7.2	8.1	8.1	3.9	Mar '09					
Duration of Dependence on Income Assistance (As of September 2009)		All* Income Assistance Recipients as % of Total Pop 0-64: Region Compared to B.C.					EI Beneficiaries Aged 19-64 as % of Working Age Population									
Region		Percent					Percent									
B.C.		Region					B.C.					Region				
Total Number of Recipients	1,393	72,592														
Percent Distribution by Duration																
<1 Year	57.7	65.3														
1-2 Years	21.4	18.2														
>2 Years	20.9	16.4														
Source: Ministry of Children and Family Development administrative files and BC Stats population estimates. These figures include only a subset of those receiving income assistance. Excluded are those on Continuous Assistance (disabled or with persistent multiple barriers to employment, children in the home of a relative, and OAS/seniors. A recipient is defined as 'each person living in a family or living alone that is receiving basic income assistance'. Data does not include Aboriginal people living on Reserve. Note: '-' Data too small to release.							Source: Ministry of Housing and Social Development and BC Stats population estimates.									
12 Dependence on Basic Income Assistance and/or Employment Insurance (Basic Income Assistance Recipients + Employment Insurance Recipients in Subject Group as a percent of Reference Group)																
Subject Group (receiving assistance)		All (19-64)	Young Adults (19-24)	'Mid' Group (25-54)	'Older' Group (55-64)	All 'Safety Net' Recipients as % of Total Pop 19-64: Region Compared to B.C.										
Reference Group		Total Pop. 19-64	Total Pop. 19-24	Total Pop. 25-54	Total Pop. 55-64	Percent										
Kitimat-Stikine Regional District	Mar '07	8.0	11.9	8.5	4.0											
	Jun '07	6.1	9.6	6.6	2.9											
	Sep '07	5.5	8.2	5.9	2.5											
	Dec '07	7.6	10.3	8.2	4.0											
	Mar '08	8.7	10.6	9.6	5.0											
	Jun '08	10.3	11.8	11.5	5.8											
	Sep '08	5.8	7.7	6.5	2.5											
	Dec '08	8.5	11.0	9.4	4.2											
	Mar '09	10.8	14.6	11.9	5.0											

Note: The EI figures reported above no longer include persons claiming parental/adoption leave. Previous issues of this table did include them.



**Kitimat-Stikine
Regional District**

13 Demographics

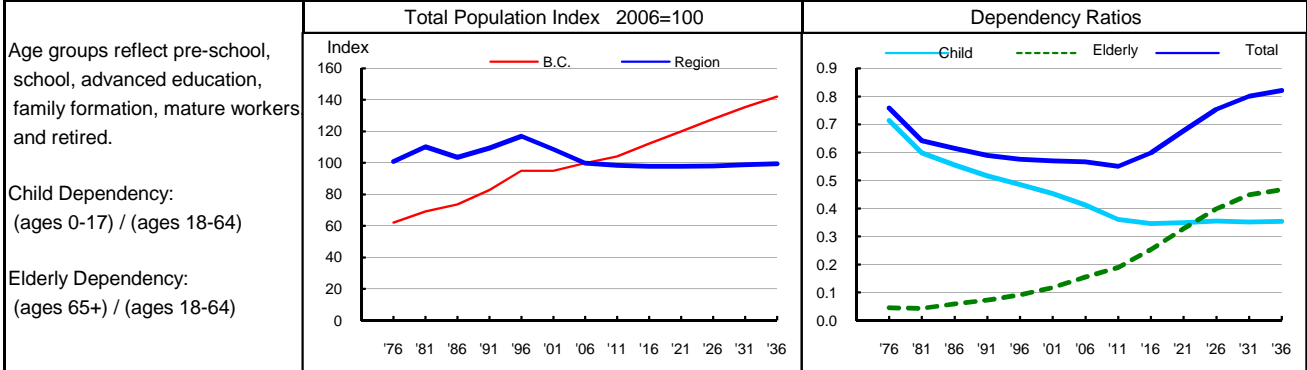
This area has generally experienced net out-flows, and has had a net loss of population since the late 1990s. The population has aged, adding over 11 years to its median age since the mid 1980s. Despite this ageing, Kitimat-Stikine is a young population, with a 2007 median age just over two years younger than the provincial median. Fertility rates have shown a sharp downward trend over the last twenty years, but they remain much higher than provincial rates. High fertility contributes to child dependency ratios that continue to be much higher than provincial ratios, despite dropping over the last two decades. On the other hand, elderly dependency is on the rise, although it remains a small part of overall dependency. The sex ratio for this sparsely populated region is heavily weighted in favour of males, in contrast to the province as a whole, which has more women than men. This is likely due to the predominance of male-dominated occupations in the area. High fertility and a younger age structure means that births outnumber deaths by a significant, but diminishing, margin. Natural increase (i.e., the excess of births over deaths) has offset some of the migration outflows, but from 1998 to 2007 it has been unable to compensate for the size of migration outflows from the region.

14 Projection

This region is expected to experience a net loss of population throughout the projection period from a combination of net migration outflows in the first half of the projection and negative natural increase in the latter half. Overall, the population size of this region should decrease by almost 1,800 by the end of the projection. The process of population ageing is expected to continue and, by 2036, overall dependency will likely have increased to about 8 dependents for every 10 people of working age.

15 Selected Demographic Characteristics

Year	Population by age group, Thousands of persons							House-holds (,000)	Dependency Ratios			Year
	0-4	5-17	18-24	25-44	45-64	65+	All Ages		Child	Elderly	Total	
1976	4.2	11.7	5.5	11.8	5.0	1.0	39.2	10.4	0.714	0.045	0.759	1976
1981	4.3	11.3	6.5	14.0	5.6	1.1	42.7	12.5	0.598	0.044	0.642	1981
1986	3.9	9.9	4.9	13.7	6.2	1.5	40.2	12.5	0.555	0.060	0.615	1986
1991	3.9	9.9	4.8	14.6	7.4	2.0	42.5	13.7	0.516	0.074	0.590	1991
1996	3.7	10.2	4.8	15.3	8.7	2.6	45.4	15.2	0.485	0.091	0.576	1996
2001	2.8	9.3	3.8	13.1	10.0	3.1	42.2	14.7	0.454	0.117	0.571	2001
2006	2.3	7.9	3.4	10.3	11.1	3.8	38.8	14.1	0.412	0.155	0.567	2006
2011	2.3	6.6	4.0	9.0	11.6	4.7	38.2	14.6	0.361	0.190	0.551	2011
2016	2.2	6.0	3.5	8.8	11.5	6.0	38.0	15.2	0.346	0.253	0.599	2016
2021	2.1	5.8	3.0	8.9	10.7	7.4	38.0	15.5	0.350	0.328	0.677	2021
2026	2.0	5.7	2.9	9.2	9.6	8.7	38.1	15.8	0.355	0.399	0.754	2026
2031	2.0	5.5	3.1	9.7	8.6	9.6	38.3	16.1	0.352	0.449	0.800	2031
2036	2.1	5.4	2.9	9.7	8.6	9.9	38.6	16.3	0.354	0.467	0.821	2036



Source: Population data are Projection P-34, run in Summer 2009. Figures are adjusted for Census undercount and are for July 1st of stated year.
Note: Demographics and Projection notes in Tables 13 and 14 are from Projection P-33, run the Summer 2008.