



**Bulkley-Nechako
Regional District**

1	General Economy
<p>Municipalities in Regional District: Burns Lake, Fort St. James, Fraser Lake, Granisle, Houston, Smithers, Telkwa, Vanderhoof</p> <p>The main economic activities in this region include agriculture, forestry, mining, and tourism. Forestry continues to be an important sector in this economy. Annual allowable cuts were increased in this region in 2004 to limit the expansion of the pine beetle epidemic and to facilitate the harvesting of timber while it is still usable. The area has several lumber, or speciality mills, some of which have announced closures or output reductions. The area is home to a large molybdenum mine whose mine life was recently extended to 2015. The area also has molybdenum, and gold and copper mines that are in the proposal stage. Tourism is a growing industry. Cattle and horse ranching are the important local agricultural activities.</p>	

The notes above and later in this report on Demographics and Projections are the basis for BC Stats population projection P33 completed in the Summer of 2008. The projections are updated annually to reflect known demographic shifts and economic conditions. Full projections with "Components of Change", "Special Age Groups", "5 Year Age Cohorts by Sex", and accompanying notes are available for B.C., the 8 development regions, the 28 regional districts, the 79 local health areas (LHAs) and a number of "special areas" of local interest which are not part of a province-wide geocoding system. Individual areas, including age and sex detail, are modestly priced. Users requiring only total population projections are able to self serve for free from our population projection page: www.bcstats.gov.bc.ca/data/pop/pop/popproj.asp The full B.C. level projection is available free on the above page.

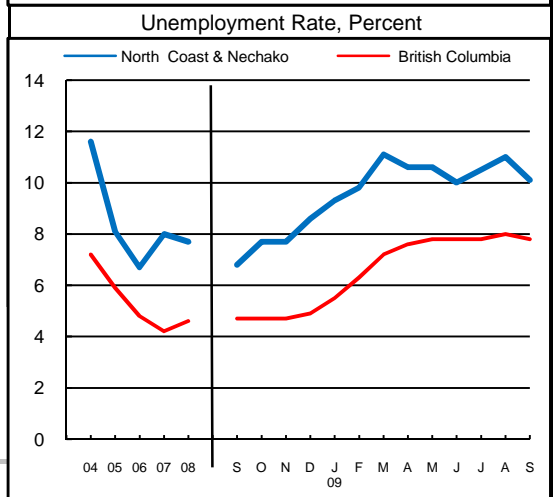
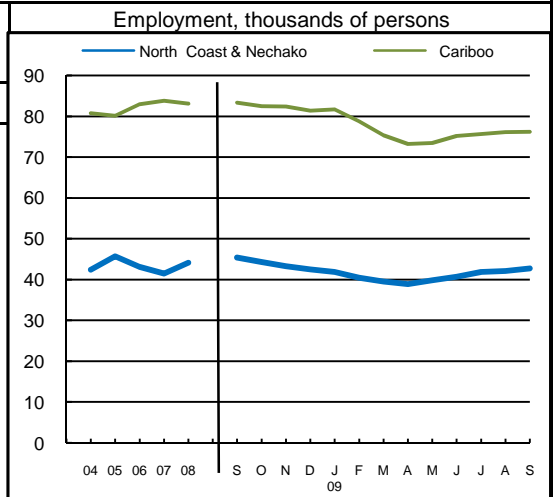
2	Economic Structure - Number of Business Locations, by Sector, by Employment Size, December 2008									
NAICS Code	Industry Sector based on NAICS Canada (North American Industrial Classification System)	Bulkley-Nechako							British Columbia	
		Locations With No Employees	Firms with Employees						With Employees	
			Less Than 20	20 to 49	50 to 99	200 Plus	All Sizes with Emp.	Percent of Total	Percent of Total	All Sizes
11	Total, All Industries	1,532	1,654	134	56	14	1,858	100.0%	100.0%	175,003
	Agric., Forestry, Fishing & Hunt	401	365	30	8	0	403	21.7%	4.0%	7,009
21	Mining & Oil & Gas Extract.	14	11	3	5	1	20	1.1%	0.6%	1,071
22	Utilities	1	3	1	0	0	4	0.2%	0.1%	203
23	Construction	180	185	6	2	0	193	10.4%	12.1%	21,108
31	Manufacturing (31-33)	44	55	6	10	7	78	4.2%	4.5%	7,879
41	Wholesale Trade	38	45	3	1	0	49	2.6%	5.9%	10,359
44	Retail Trade (44-45)	91	176	19	5	3	203	10.9%	11.9%	20,742
48	Transp. & Warehousing (48-49)	149	133	4	2	0	139	7.5%	4.4%	7,734
51	Information & Cultural Indust.	8	18	0	0	0	18	1.0%	1.4%	2,412
52	Finance & Insurance	47	41	7	2	0	50	2.7%	3.8%	6,564
53	Real Estate & Rental & Leasing	147	49	0	0	0	49	2.6%	4.5%	7,835
54	Profes'nl, Scientif. & Tech. Srv	99	110	4	1	1	116	6.2%	11.0%	19,278
55	Mgmt. of Companies & Enter.	67	21	0	0	0	21	1.1%	1.6%	2,818
56	Admin. & Sup'rt, Waste Mgmt.	40	46	5	2	0	53	2.9%	4.9%	8,513
61	Educational Services	5	11	4	0	2	17	0.9%	1.4%	2,363
62	Health Care & Social Assistance	13	93	10	4	0	107	5.8%	8.4%	14,773
71	Arts, Entertainment & Recreation	29	28	4	0	0	32	1.7%	1.6%	2,873
72	Accom. & Food Services	51	108	19	4	0	131	7.1%	6.7%	11,639
81	Other Serv's (ex. Public Admin.)	107	148	1	1	0	150	8.1%	10.9%	19,095
91	Public Administration	1	8	8	9	0	25	1.3%	0.4%	735

Source: Statistics Canada, Business Register Division. Note: This table formerly identified **business establishments**.



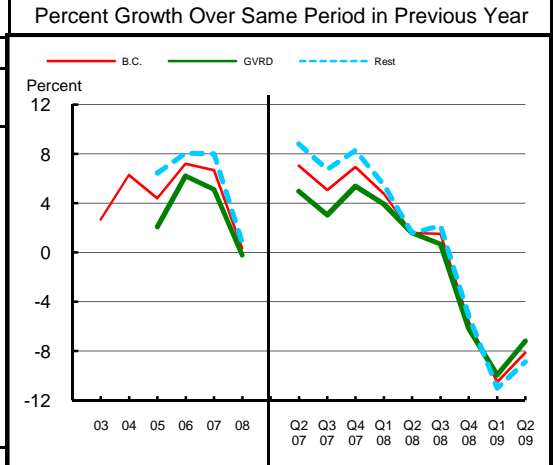
**Bulkley-Nechako
Regional District**

3 Employment and Unemployment Rate, monthly data are 3-month moving average, actual, ending in stated month							
	North Coast & Nechako		Cariboo		British Columbia		
	Emp. ('000)	Unemp. %	Emp. ('000)	Unemp. %	Emp. ('000)	Unemp. %	
1999	46.7	8.8	81.4	11.6	1,894.4	8.3	
2000	47.3	10.2	79.1	9.9	1,931.3	7.1	
2001	46.6	11.2	79.4	9.7	1,921.6	7.7	
2002	44.9	12.6	78.0	12.7	1,965.0	8.5	
2003	44.8	11.3	78.2	11.1	2,014.7	8.0	
2004	42.4	11.6	80.7	9.1	2,062.7	7.2	
2005	45.7	8.1	80.1	7.4	2,130.5	5.9	
2006	43.1	6.7	82.9	6.1	2,195.5	4.8	
2007	41.5	8.0	83.8	5.1	2,266.3	4.2	
2008	44.1	7.7	83.1	6.5	2,314.3	4.6	
2008 Jan	41.5	8.2	88.0	5.2	2,286.5	4.1	
2008 Feb	42.1	7.3	86.5	5.8	2,278.9	4.2	
2008 Mar	43.3	7.1	84.0	6.8	2,284.9	4.4	
2008 Apr	44.3	7.9	82.9	7.7	2,295.0	4.4	
2008 May	44.4	8.6	82.7	7.9	2,313.3	4.5	
2008 Jun	45.4	8.5	83.5	7.0	2,329.8	4.4	
2008 Jul	45.8	7.5	83.4	6.9	2,345.0	4.5	
2008 Aug	46.5	7.6	83.2	7.2	2,350.7	4.6	
2008 Sep	45.4	6.8	83.3	6.8	2,337.7	4.7	
2008 Oct	44.3	7.7	82.5	6.4	2,325.3	4.7	
2008 Nov	43.3	7.7	82.4	5.5	2,312.5	4.7	
2008 Dec	42.5	8.6	81.4	5.6	2,304.8	4.9	
2009 Jan	41.9	9.3	81.7	6.1	2,278.4	5.5	
2009 Feb	40.5	9.8	78.8	7.8	2,251.1	6.3	
2009 Mar	39.5	11.1	75.3	10.0	2,227.5	7.2	
2009 Apr	38.9	10.6	73.2	12.0	2,229.0	7.6	
2009 May	39.8	10.6	73.4	12.9	2,243.1	7.8	
2009 Jun	40.7	10.0	75.2	13.5	2,264.6	7.8	
2009 Jul	41.9	10.5	75.6	14.2	2,275.9	7.8	
2009 Aug	42.1	11.0	76.1	13.3	2,280.5	8.0	
2009 Sep	42.7	10.1	76.2	12.4	2,275.8	7.8	
2009 Oct							
2009 Nov							
2009 Dec							
Average:							
ytd average	Jan-Sep08	44.7	7.4	83.6	6.9	2,317.5	4.5
based on	Jan-Sep09	40.9	10.4	75.5	12.0	2,256.0	7.6
actual data	% Change	-8.4		-9.7		-2.7	



Source: Labour Force Survey, Statistics Canada. Sub-provincial regions are development regions or census metropolitan areas.

4 Retail Sales - based on Statistics Canada monthly survey							Percent Growth Over Same Period in Previous Year						
Year or Year/Quarter	\$ millions of retail sales			Percent change on year ago			B.C.	Greater Vancouver	Rest of Province	B.C.	Greater Vancouver	Rest of Province	
	B.C.	Greater Vancouver	Rest of Province	B.C.	Greater Vancouver	Rest of Province							
2004	47,216.6	22,243.6	24,973.0	6.3	n/a	n/a							
2005	49,286.3	22,702.6	26,583.7	4.4	2.1	6.4							
Annual data 2006	52,837.1	24,110.2	28,726.9	7.2	6.2	8.1							
2007	56,365.4	25,342.8	31,022.6	6.7	5.1	8.0							
2008	56,562.4	25,290.5	31,271.8	0.3	-0.2	0.8							
Quarterly data 08 2	14,749.1	6,626.3	8,122.8	1.6	1.6	1.6							
08 3	14,923.3	6,466.4	8,456.9	1.5	0.7	2.2							
08 4	14,053.2	6,340.4	7,712.7	-5.6	-6.2	-5.2							
09 1	11,485.1	5,274.5	6,210.5	-10.5	-10.0	-11.0							
09 2	13,550.1	6,150.0	7,400.1	-8.1	-7.2	-8.9							



Source: B.C. & GVRD data - Statistics Canada, monthly survey (CANSIM 080-0015).



**Bulkley-Nechako
Regional District**

Was 5 **Manufacturing Principal Statistics - Search at www.made-in-bc.ca for local firms, products and more**

This table is discontinued. Sub-provincial manufacturing principal statistics are no longer being produced.

5		Tourism Room Revenue - Includes Stikine Region (\$ Thousands)					Tourism Room Revenue Index 2003=100			
	Year	Total/YTD	Q1	Q2	Q3	Q4	Index			
Bulkley-Nechako Regional District	2005	9,649.4	1,956.5	2,341.1	3,331.6	2,020.2				
	2006	9,790.6	1,739.9	2,337.0	3,532.7	2,181.0				
	2007	11,246.4	1,862.4	2,696.4	4,111.8	2,575.8				
	2008	10,891.4	1,823.5	2,712.8	3,905.9	2,449.3				
	2009	3,947.7	1,577.9	2,369.8						
British Columbia	2005	1,681,563.6	351,779.6	404,639.8	610,273.7	314,870.6				
	2006	1,807,608.7	366,165.1	450,747.7	652,476.4	338,219.5				
	2007	1,963,958.7	412,949.3	488,493.9	697,545.2	364,970.3				
	2008	1,977,424.9	435,223.9	503,276.7	687,708.3	351,215.9				
	2009	802,329.6	378,880.1	423,449.6						
2008 Room Revenue by Accommodation Type (\$Thousands %Share)										
TOTAL	10,805.0	100.0%								
Fishing lodges	845.0	7.8%								
Motels	4,783.0	44.3%								
*Town of Smithers	5,997.0	55.5%								
asterisk before location denotes sub-area detail										

All room revenue data has been revised. For an explanation, see our periodical called *Tourism Sector Monitor*, April and May issues of 2009.
Link to explanation of changes: http://www.bcstats.gov.bc.ca/pubs/pr_tour.asp

6		Building Permits						Total Permits Index 2003=100	
Year	Total Building Permits	Non Residential				Residential		Index	
		Total Non Res.	Industrial	Commercial	Institutional & Gov't	Units			
		<-- \$ Millions -->							
2001	17.8	10.8	1.1	5.3	4.4	7.0	61		
2002	24.3	19.5	5.5	4.0	10.0	4.9	35		
2003	16.6	9.8	3.5	3.8	2.4	6.8	51		
2004	21.6	13.4	1.3	4.3	7.8	8.2	50		
2005	38.9	25.5	9.8	3.5	12.2	13.4	95		
2006	27.7	13.1	3.7	5.9	3.5	14.6	80		
2007	34.7	14.3	3.3	7.4	3.6	20.4	108		
2008	26.2	7.7	1.0	3.8	3.0	18.4	100		
Jan-Aug 08	21.7	5.5	0.6	3.1	1.8	16.2	83		
Jan-Aug 09	13.9	3.5	0.5	2.2	0.8	10.4	44		

Not all projects require a building permit, and not all municipalities & regions report. Latest month preliminary, previous month is revised.
Source: Statistics Canada (data collected from municipal and Regional District offices).

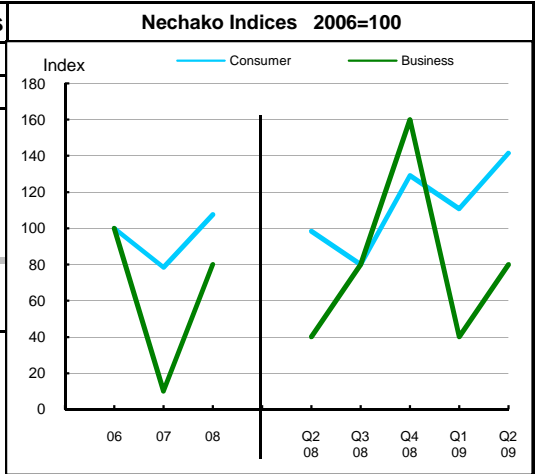


**Bulkley-Nechako
 Regional District**

7 Business and Consumer Bankruptcies, Quarterly - NEW series						
Year	Nechako		British Columbia		Consumer	Business
	Consumer	Business	Consumer	Business		
2006	65	10	7,020	585		
2007	51	1	6,651	470		
2008	70	8	7,293	454		
2009						
2010						
YTD-08	36	2	3,335	202		
YTD-09	41	3	5,400	232		

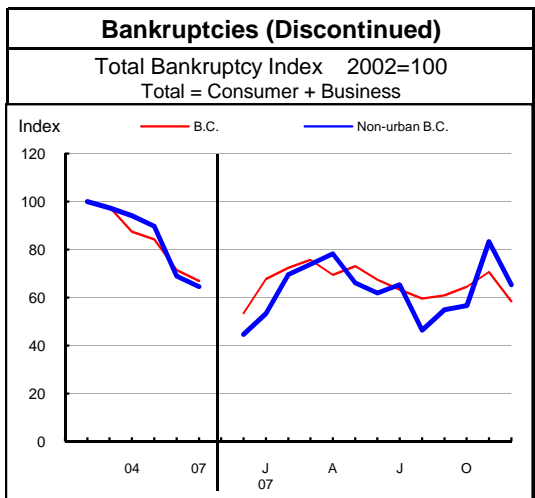
Source: Office of the Superintendent of Bankruptcy, Government of Canada
 Total bankruptcy index includes business and consumer bankruptcies.

Note: Bankruptcy is not a good measure of business failure. Most firms that fail wind down operations and withdraw from business.



8 Incorporations			
Year	Incorporations	Incorporations Index 2003=100	
		B.C.	Region
2001	86		
2002	78		
2003	97		
2004	108		
2005	106		
2006	135		
2007	128		
2008	115		
Jan-Sep 08	90		
Jan-Sep 09	60		

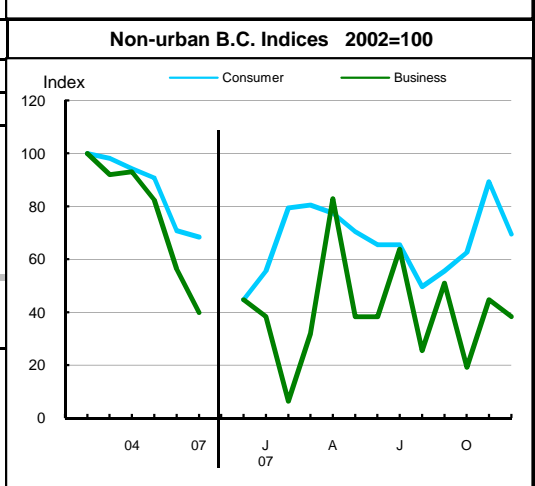
Source: Incorporations - (B.C.) Ministry of Finance



9 Business and Consumer Bankruptcies (Discontinued)				
Year	Non-urban B.C.		B.C.	
	Consumer	Business	Consumer	Business
2003	1,186	173	9,385	1,002
2004	1,139	175	8,378	922
2005	1,097	155	8,173	786
2006	856	106	7,021	587
2007	827	75	6,651	470
Jan-Dec 06	856	106	7,022	587
Jan-Dec 07	827	75	6,651	470

Source: Office of the Superintendent of Bankruptcy, Government of Canada
 Total bankruptcy index includes business and consumer bankruptcies.

Note: Bankruptcy is not a good measure of business failure. Most firms that fail wind down operations and withdraw from business.





**Bulkley-Nechako
Regional District**

Dependence on the Safety Net

10 Basic Income Assistance (Basic Income Assistance Recipients in Subject Group as a percent of Reference Group)							11 Employment Insurance (was UI) (EI beneficiaries as a percent of Reference Group)				
Subject Group (receiving benefits)		All (0-64)	Children <19 yrs in Families	Young Adults (19-24)	'Mid' Group (25-54)	Single Parent Women	Working Age (19-64)	Young Adults (19-24)	'Mid' Group (25-54)	'Older' Workers (55-64)	Note Older Data
Reference Group		Total Pop. 0-64	Total Pop. <19	Total Pop. 19-24	Total Pop. 25-54	Tot. Female 19-64	Total Pop. 19-64	Total Pop. 19-24	Total Pop. 25-54	Total Pop. 55-64	
Bulkley-Nechako Regional District	Sep '07	1.9	2.7	2.4	1.5	1.1	3.0	3.8	3.2	2.0	Mar '07
	Dec '07	1.9	2.7	2.4	1.6	1.9	3.9	3.2	4.2	3.0	Jun '07
	Mar '08	2.1	3.0	2.6	1.8	1.9	2.1	1.8	2.4	1.6	Sep '07
	Jun '08	2.0	2.8	2.9	1.7	2.1	4.1	4.0	4.5	2.8	Dec '07
	Sep '08	2.2	3.3	2.7	1.9	2.0	6.1	6.0	6.8	3.8	Mar '08
	Dec '08	2.2	3.2	2.7	1.9	1.0	13.3	9.5	15.0	9.7	Jun '08
	Mar '09	2.7	3.7	3.6	2.4	1.3	3.5	3.2	3.9	2.3	Sep '08
	Jun '09	2.9	4.0	3.6	2.6	1.3	4.0	5.2	4.2	2.4	Dec '08
	Sep '09	3.0	4.3	4.4	2.6	1.4	6.2	8.4	6.5	3.7	Mar '09
	Duration of Dependence on Income Assistance (As of September 2009)		All* Income Assistance Recipients as % of Total Pop 0-64: Region Compared to B.C.					EI Beneficiaries Aged 19-64 as % of Working Age Population			
Region		Percent					Percent				
B.C.											
Total Number of Recipients	957	72,592									
Percent Distribution by Duration											
<1 Year	64.5	65.3									
1-2 Years	19.1	18.2									
>2 Years	16.4	16.4									
Source: Ministry of Children and Family Development administrative files and BC Stats population estimates. These figures include only a subset of those receiving income assistance. Excluded are those on Continuous Assistance (disabled or with persistent multiple barriers to employment, children in the home of a relative, and OAS/seniors. A recipient is defined as 'each person living in a family or living alone that is receiving basic income assistance'. Data does not include Aboriginal people living on Reserve. Note: '-' Data too small to release.							Source: Ministry of Housing and Social Development and BC Stats population estimates.				
12 Dependence on Basic Income Assistance and/or Employment Insurance (Basic Income Assistance Recipients + Employment Insurance Recipients in Subject Group as a percent of Reference Group)											
Subject Group (receiving assistance)		All (19-64)	Young Adults (19-24)	'Mid' Group (25-54)	'Older' Group (55-64)	All 'Safety Net' Recipients as % of Total Pop 19-64: Region Compared to B.C.					
Reference Group		Total Pop. 19-64	Total Pop. 19-24	Total Pop. 25-54	Total Pop. 55-64	Percent					
Bulkley-Nechako Regional District	Mar '07	4.4	6.5	4.6	2.6						
	Jun '07	5.4	6.0	5.8	3.6						
	Sep '07	3.6	4.1	3.9	2.3						
	Dec '07	5.6	6.3	6.1	3.5						
	Mar '08	7.7	8.4	8.6	4.4						
	Jun '08	14.9	12.3	16.7	10.4						
	Sep '08	5.2	5.7	5.7	2.9						
	Dec '08	5.7	7.9	6.0	3.2						
	Mar '09	8.4	11.9	8.8	4.7						

Note: The EI figures reported above no longer include persons claiming parental/adoption leave. Previous issues of this table did include them.



**Bulkley-Nechako
 Regional District**

13 Demographics

This area has generally experienced net out-flows, and has had several years of net loss of population, especially since the late 1990s. The population has aged, adding about 10.5 years to its median age since the mid 1980s. Despite this ageing, Bulkley-Nechako is a relatively young population, with a 2007 median age almost years younger than the provincial median. Fertility rates have declined slightly, but they continue to be extremely high relative to provincial rates, with levels around or above replacement for much of the period since 1986. High fertility contributes to child dependency ratios that continue to be much higher than provincial ratios, despite dropping over the last two decades. On the other hand, elderly dependency is on the rise, although it remains a small part of overall dependency. The sex ratio for this sparsely populated region is heavily weighted in favour of males, in contrast to the province as a whole, which has more women than men. This is likely due to the predominance of male-dominated occupations in the area. High fertility and a younger age structure means that births outnumber deaths by a significant, but diminishing, margin. Natural increase (i.e., the excess of births over deaths) has offset some of the migration outflows, but for most of the last decade there has been a population decline in this region.

14 Projection

Natural increase (the excess of births over deaths) for this area is expected to be positive until later in the projection period. Net migration is projected to be somewhat variable, but overall the region should see net outflows of migrants until the last decade of the period, with increasing net inflows thereafter. Despite these early outflows, natural increase is expected to drive a small increase in the population over the next 30 years, in the order of about 1,600 people. The process of population ageing is expected to continue and by 2036, the population in this area is projected to have over 8 dependents for every 10 people of working age.

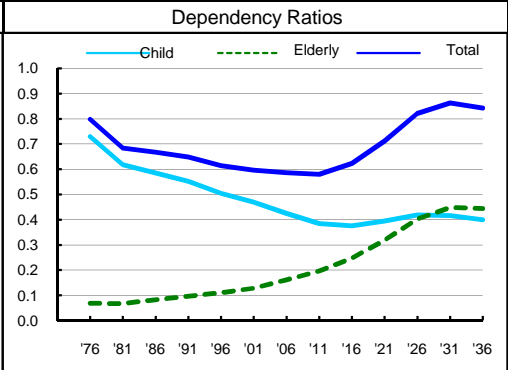
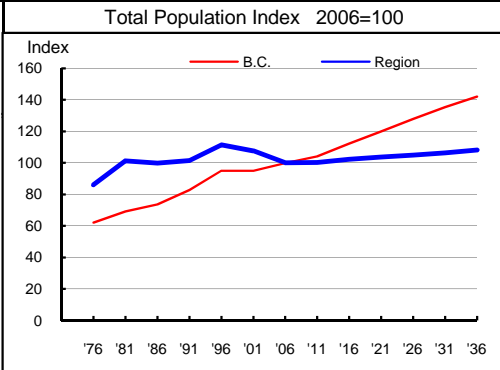
15 Selected Demographic Characteristics

Year	Population by age group, Thousands of persons							Households (,000)	Dependency Ratios			Year
	0-4	5-17	18-24	25-44	45-64	65+	All Ages		Child	Elderly	Total	
1976	3.6	10.0	4.6	9.3	4.7	1.3	33.5	9.2	0.729	0.069	0.798	1976
1981	4.3	10.2	5.9	12.2	5.3	1.6	39.4	11.9	0.617	0.068	0.684	1981
1986	4.0	9.6	4.5	12.9	5.8	1.9	38.8	12.3	0.585	0.082	0.667	1986
1991	3.6	9.6	4.0	13.4	6.5	2.3	39.4	13.0	0.552	0.097	0.648	1991
1996	3.6	9.9	4.4	14.4	8.1	3.0	43.3	14.8	0.503	0.111	0.614	1996
2001	3.0	9.2	4.0	12.8	9.4	3.4	41.8	14.8	0.469	0.128	0.597	2001
2006	2.5	7.9	3.4	10.2	10.8	4.0	38.9	14.3	0.425	0.162	0.587	2006
2011	2.6	6.8	4.1	9.1	11.4	4.8	38.9	14.5	0.383	0.197	0.580	2011
2016	2.7	6.5	3.7	9.4	11.4	6.1	39.7	15.1	0.375	0.248	0.623	2016
2021	2.7	6.6	3.2	9.7	10.7	7.5	40.3	15.6	0.394	0.318	0.712	2021
2026	2.5	6.9	3.0	9.8	9.5	9.0	40.8	15.8	0.419	0.402	0.821	2026
2031	2.5	6.8	3.4	9.9	8.8	9.9	41.3	16.2	0.416	0.448	0.863	2031
2036	2.5	6.6	3.5	10.0	9.3	10.1	42.0	16.7	0.399	0.444	0.843	2036

Age groups reflect pre-school, school, advanced education, family formation, mature workers and retired.

Child Dependency:
 (ages 0-17) / (ages 18-64)

Elderly Dependency:
 (ages 65+) / (ages 18-64)



Source: Population data are Projection P-34, run in Summer 2009. Figures are adjusted for Census undercount and are for July 1st of stated year.
 Note: Demographics and Projection notes in Tables 13 and 14 are from Projection P-33, run the Summer 2008.