



**Fraser-Fort George  
Regional District**

<b>1</b>	<b>General Economy</b>
<p>Municipalities in Regional District: Mackenzie, McBride, Prince George, Valemount</p> <p>Forestry has been the main economic activity for this area historically, however recent efforts to diversify the local economy have resulted in growth in mining, high-tech and tourism industries. This area is home to many large lumber and pulp and paper mills, some of which have announced closures or output reductions. These mills rely on the large Timber Supply Areas in this region for timber. The Annual Allowable Cuts have been increased recently for these areas, in an effort to salvage Mountain Pine Beetle affected timber. Small high technology and chemical production industries also exist in the area. This area is a transportation hub for Northern British Columbia and has good rail, air and road transportation links. Oil and gas exploration in Bowser Basin north-west of the City and Nechako Basin south-west of the City are in preliminary stages of exploration and possible development. Mining exploration and development continues for the area. Beef cattle and horse ranching are the agricultural activities in the areas.</p>	

The notes above and later in this report on Demographics and Projections are the basis for BC Stats population projection P33 completed in the Summer of 2008. The projections are updated annually to reflect known demographic shifts and economic conditions. Full projections with "Components of Change", "Special Age Groups", "5 Year Age Cohorts by Sex", and accompanying notes are available for B.C., the 8 development regions, the 28 regional districts, the 79 local health areas (LHAs) and a number of "special areas" of local interest which are not part of a province-wide geocoding system. Individual areas, including age and sex detail, are modestly priced. Users requiring only total population projections are able to self serve for free from our population projection page: [www.bcstats.gov.bc.ca/data/pop/pop/popproj.asp](http://www.bcstats.gov.bc.ca/data/pop/pop/popproj.asp) The full B.C. level projection is available free on the above page.

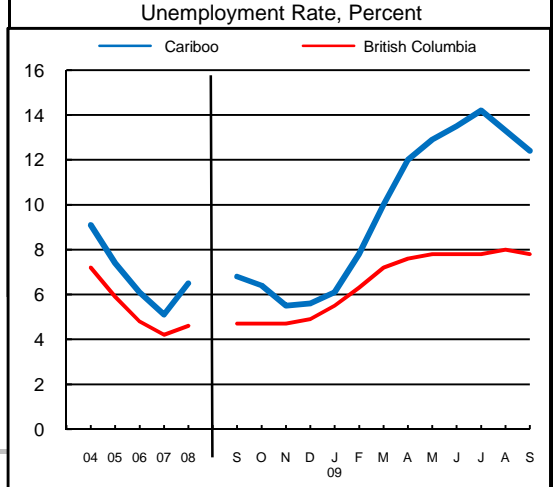
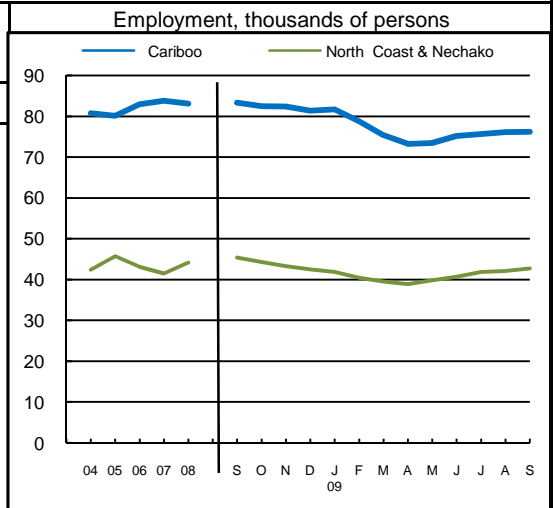
<b>2</b>	<b>Economic Structure - Number of Business Locations, by Sector, by Employment Size, December 2008</b>									
NAICS Code	Industry Sector based on NAICS Canada (North American Industrial Classification System)	Fraser-Fort George							British Columbia	
		Locations With No Employees	Firms with Employees						With Employees	
			Less Than 20	20 to 49	50 to 199	200 Plus	All Sizes with Emp.	Percent of Total	Percent of Total	All Sizes
11	Total, All Industries	2,974	3,241	348	128	29	3,746	100.0%	100.0%	175,003
	Agric., Forestry, Fishing & Hunt	375	277	20	11	1	309	8.2%	4.0%	7,009
21	Mining & Oil & Gas Extract.	8	12	1	2	0	15	0.4%	0.6%	1,071
22	Utilities	3	2	1	0	0	3	0.1%	0.1%	203
23	Construction	410	403	25	12	0	440	11.7%	12.1%	21,108
31	Manufacturing (31-33)	59	112	29	18	9	168	4.5%	4.5%	7,879
41	Wholesale Trade	68	179	33	4	0	216	5.8%	5.9%	10,359
44	Retail Trade (44-45)	157	376	44	20	4	444	11.9%	11.9%	20,742
48	Transp. & Warehousing (48-49)	314	248	23	6	3	280	7.5%	4.4%	7,734
51	Information & Cultural Indust.	15	22	4	2	0	28	0.7%	1.4%	2,412
52	Finance & Insurance	170	96	21	4	0	121	3.2%	3.8%	6,564
53	Real Estate & Rental & Leasing	456	123	5	1	1	130	3.5%	4.5%	7,835
54	Profes'nl, Scientif. & Tech. Srv	273	262	15	7	0	284	7.6%	11.0%	19,278
55	Mgmt. of Companies & Enter.	188	36	2	1	1	40	1.1%	1.6%	2,818
56	Admin. & Sup'rt, Waste Mgmt.	96	133	13	9	1	156	4.2%	4.9%	8,513
61	Educational Services	22	28	1	2	3	34	0.9%	1.4%	2,363
62	Health Care & Social Assistance	56	326	20	4	3	353	9.4%	8.4%	14,773
71	Arts, Entertainment & Recreation	36	45	10	1	1	57	1.5%	1.6%	2,873
72	Accom. & Food Services	70	150	58	19	0	227	6.1%	6.7%	11,639
81	Other Serv's (ex. Public Admin.)	198	405	17	0	1	423	11.3%	10.9%	19,095
91	Public Administration	-	6	6	5	1	18	0.5%	0.4%	735

Source: Statistics Canada, Business Register Division. Note: This table formerly identified **business establishments**.



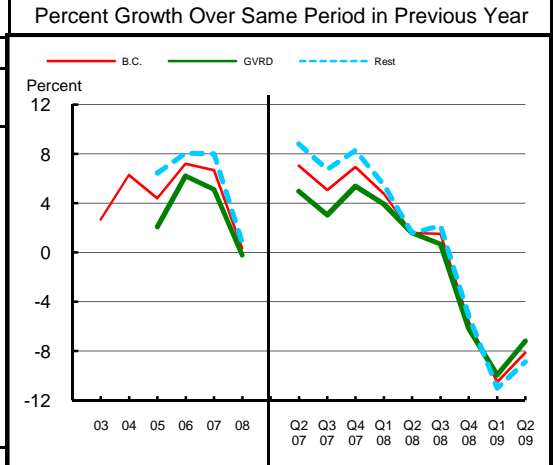
Fraser-Fort George  
Regional District

3		Employment and Unemployment Rate, monthly data are 3-month moving average, actual, ending in stated month					
		Cariboo		North Coast & Nechako		British Columbia	
		Emp. ('000)	Unemp. %	Emp. ('000)	Unemp. %	Emp. ('000)	Unemp. %
1999		81.4	11.6	46.7	8.8	1,894.4	8.3
2000		79.1	9.9	47.3	10.2	1,931.3	7.1
2001		79.4	9.7	46.6	11.2	1,921.6	7.7
2002		78.0	12.7	44.9	12.6	1,965.0	8.5
2003		78.2	11.1	44.8	11.3	2,014.7	8.0
2004		80.7	9.1	42.4	11.6	2,062.7	7.2
2005		80.1	7.4	45.7	8.1	2,130.5	5.9
2006		82.9	6.1	43.1	6.7	2,195.5	4.8
2007		83.8	5.1	41.5	8.0	2,266.3	4.2
2008		83.1	6.5	44.1	7.7	2,314.3	4.6
2008	Jan	88.0	5.2	41.5	8.2	2,286.5	4.1
	Feb	86.5	5.8	42.1	7.3	2,278.9	4.2
	Mar	84.0	6.8	43.3	7.1	2,284.9	4.4
	Apr	82.9	7.7	44.3	7.9	2,295.0	4.4
	May	82.7	7.9	44.4	8.6	2,313.3	4.5
	Jun	83.5	7.0	45.4	8.5	2,329.8	4.4
	Jul	83.4	6.9	45.8	7.5	2,345.0	4.5
	Aug	83.2	7.2	46.5	7.6	2,350.7	4.6
	Sep	83.3	6.8	45.4	6.8	2,337.7	4.7
	Oct	82.5	6.4	44.3	7.7	2,325.3	4.7
	Nov	82.4	5.5	43.3	7.7	2,312.5	4.7
	Dec	81.4	5.6	42.5	8.6	2,304.8	4.9
2009	Jan	81.7	6.1	41.9	9.3	2,278.4	5.5
	Feb	78.8	7.8	40.5	9.8	2,251.1	6.3
	Mar	75.3	10.0	39.5	11.1	2,227.5	7.2
	Apr	73.2	12.0	38.9	10.6	2,229.0	7.6
	May	73.4	12.9	39.8	10.6	2,243.1	7.8
	Jun	75.2	13.5	40.7	10.0	2,264.6	7.8
	Jul	75.6	14.2	41.9	10.5	2,275.9	7.8
	Aug	76.1	13.3	42.1	11.0	2,280.5	8.0
	Sep	76.2	12.4	42.7	10.1	2,275.8	7.8
	Oct						
	Nov						
	Dec						
Average:							
ytd average							
based on							
actual data							
% Change							
		83.6	6.9	44.7	7.4	2,317.5	4.5
		75.5	12.0	40.9	10.4	2,256.0	7.6
		-9.7		-8.4		-2.7	



Source: Labour Force Survey, Statistics Canada. Sub-provincial regions are development regions or census metropolitan areas.

4		Retail Sales - based on Statistics Canada monthly survey						Percent Growth Over Same Period in Previous Year	
Year or Year/Quarter	\$ millions of retail sales			Percent change on year ago			B.C.	Greater Vancouver	Rest of Province
	B.C.	Greater Vancouver	Rest of Province	B.C.	Greater Vancouver	Rest of Province			
2004	47,216.6	22,243.6	24,973.0	6.3	n/a	n/a			
2005	49,286.3	22,702.6	26,583.7	4.4	2.1	6.4			
Annual data	52,837.1	24,110.2	28,726.9	7.2	6.2	8.1			
2007	56,365.4	25,342.8	31,022.6	6.7	5.1	8.0			
2008	56,562.4	25,290.5	31,271.8	0.3	-0.2	0.8			
Quarterly data	14,749.1	6,626.3	8,122.8	1.6	1.6	1.6			
08 2	14,923.3	6,466.4	8,456.9	1.5	0.7	2.2			
08 3	14,053.2	6,340.4	7,712.7	-5.6	-6.2	-5.2			
08 4	11,485.1	5,274.5	6,210.5	-10.5	-10.0	-11.0			
09 1	13,550.1	6,150.0	7,400.1	-8.1	-7.2	-8.9			
09 2									



Source: B.C. & GVRD data - Statistics Canada, monthly survey (CANSIM 080-0015).



Fraser-Fort George  
Regional District

**Was 5** **Manufacturing Principal Statistics - Search at [www.made-in-bc.ca](http://www.made-in-bc.ca) for local firms, products and more**

This table is discontinued. Sub-provincial manufacturing principal statistics are no longer being produced.

5		Tourism Room Revenue (\$ Thousands)					Tourism Room Revenue Index 2003=100	
Fraser-Ft. George Regional District	Year	Total/YTD	Q1	Q2	Q3	Q4	Index	
		2005	9,649.4	1,956.5	2,341.1	3,331.6	2,020.2	
	2006	9,790.6	1,739.9	2,337.0	3,532.7	2,181.0		
	2007	11,246.4	1,862.4	2,696.4	4,111.8	2,575.8		
	2008	10,891.4	1,823.5	2,712.8	3,905.9	2,449.3		
	2009	3,947.7	1,577.9	2,369.8				
British Columbia	Year	Total/YTD	Q1	Q2	Q3	Q4	Index	
	2005	1,681,563.6	351,779.6	404,639.8	610,273.7	314,870.6		
	2006	1,807,608.7	366,165.1	450,747.7	652,476.4	338,219.5		
	2007	1,963,958.7	412,949.3	488,493.9	697,545.2	364,970.3		
	2008	1,977,424.9	435,223.9	503,276.7	687,708.3	351,215.9		
	2009	802,329.6	378,880.1	423,449.6				
2008 Room Revenue by Accommodation Type (\$Thousands   %Share)								
TOTAL	40,464.0	100.0%						
Hotels	24,758.0	61.2%						
1-75 Rooms								
Motels	14,558.0	36.0%						
*City of Prince George	30,881.0	76.3%						
*Valemount/Robson Va	6,852.0	16.9%						
asterisk before location denotes sub-area detail								

Source: Hotel tax database maintained by Consumer Taxation Branch, Ministry of Small Business and Revenue  
Published in detail monthly by BC Stats.

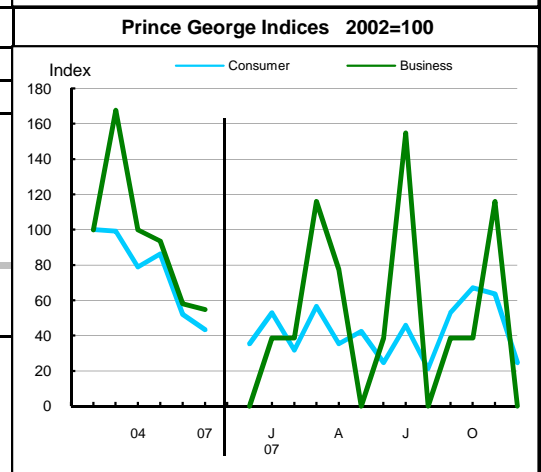
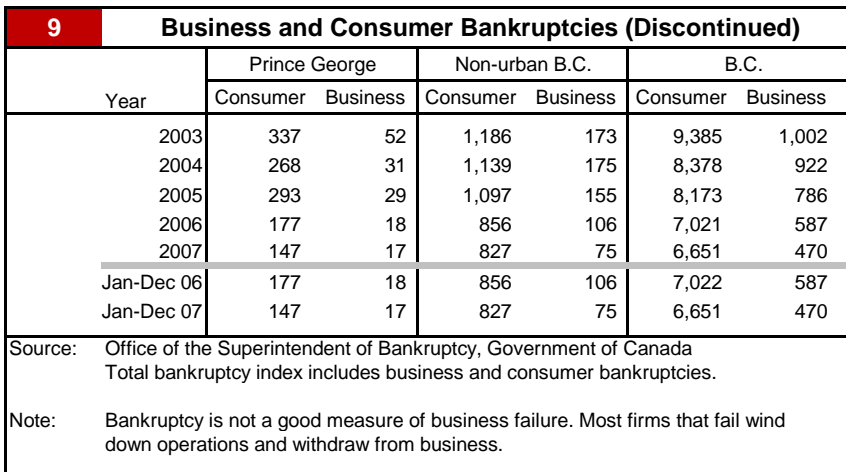
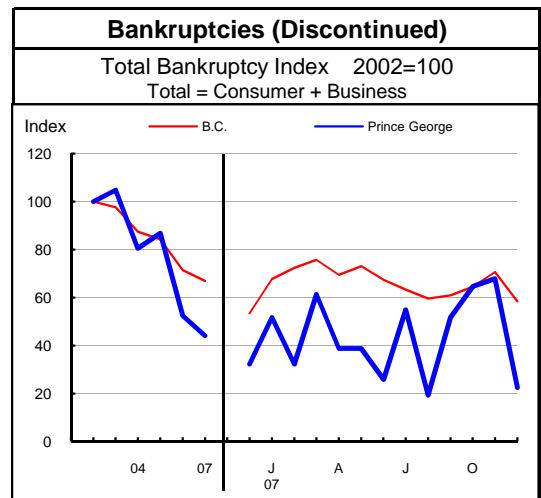
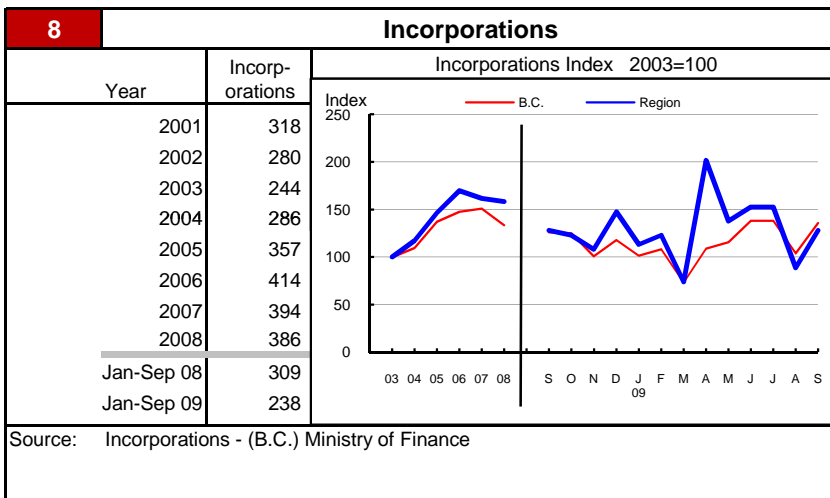
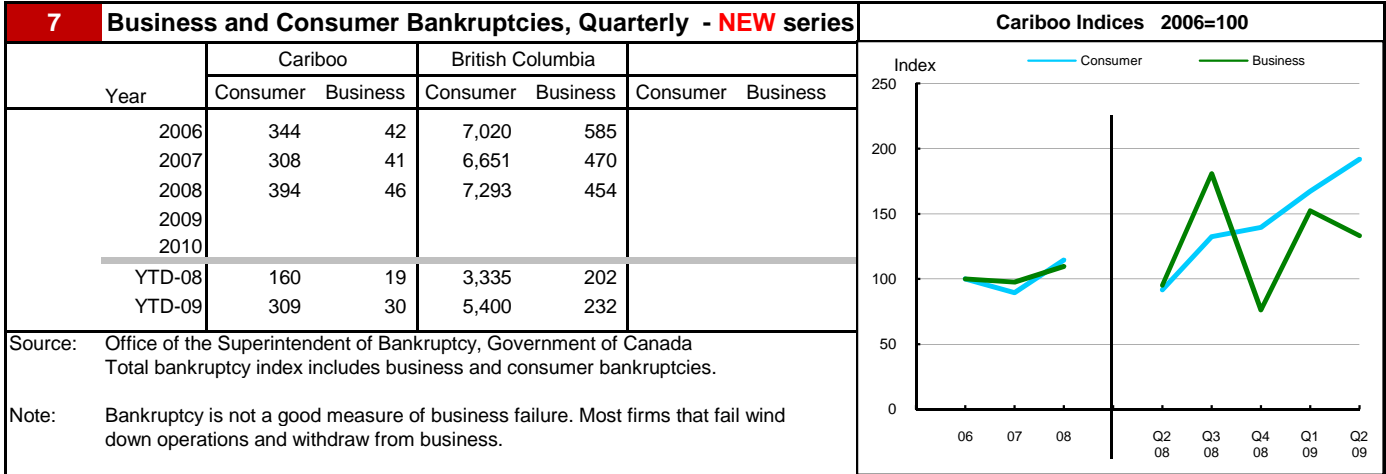
All room revenue data has been revised. For an explanation, see our periodical called *Tourism Sector Monitor*, April and May issues of 2009.  
Link to explanation of changes: [http://www.bcstats.gov.bc.ca/pubs/pr\\_tour.asp](http://www.bcstats.gov.bc.ca/pubs/pr_tour.asp)

6		Building Permits						Total Permits Index 2003=100	
Year	Total Building Permits	Non Residential				Residential		Index	
		Total Non Res.	Industrial	Commercial	Institutional & Gov't	Units	Units		
		<-- \$ Millions -->							
2001	82.0	64.8	1.0	10.9	52.9	17.2	95		
2002	47.5	30.2	6.6	17.8	5.8	17.2	109		
2003	87.8	68.5	2.5	44.1	21.9	19.4	117		
2004	79.0	43.4	13.5	26.6	3.3	35.6	241		
2005	111.4	69.7	11.5	20.8	37.5	41.7	251		
2006	119.2	58.8	5.5	25.2	28.2	60.4	363		
2007	179.0	93.5	5.9	48.2	39.4	85.4	346		
2008	147.8	80.0	3.0	21.4	55.6	67.8	305		
Jan-Aug 08	75.4	27.1	1.1	14.1	11.9	48.3	191		
Jan-Aug 09	55.6	24.4	0.3	20.8	3.2	31.2	113		

Not all projects require a building permit, and not all municipalities & regions report. Latest month preliminary, previous month is revised.  
Source: Statistics Canada (data collected from municipal and Regional District offices).



Fraser-Fort George  
Regional District





Fraser-Fort George  
Regional District

Dependence on the Safety Net

10 Basic Income Assistance (Basic Income Assistance Recipients in Subject Group as a percent of Reference Group)							11 Employment Insurance (was UI) (EI beneficiaries as a percent of Reference Group)																				
Subject Group (receiving benefits)		All (0-64)	Children <19 yrs in Families	Young Adults (19-24)	'Mid' Group (25-54)	Single Parent Women	Working Age (19-64)	Young Adults (19-24)	'Mid' Group (25-54)	'Older' Workers (55-64)	Note Older Data																
Reference Group		Total Pop. 0-64	Total Pop. <19	Total Pop. 19-24	Total Pop. 25-54	Tot. Female 19-64	Total Pop. 19-64	Total Pop. 19-24	Total Pop. 25-54	Total Pop. 55-64																	
Fraser-Ft. George Regional District	Sep '07	2.6	4.0	2.5	2.4	1.4	3.3	3.9	3.4	2.3	Mar '07																
	Dec '07	2.5	3.6	2.6	2.4	1.1	2.9	2.7	3.2	2.2	Jun '07																
	Mar '08	2.6	3.7	2.8	2.6	1.2	2.3	2.3	2.5	1.8	Sep '07																
	Jun '08	2.8	3.9	3.1	2.6	1.1	3.1	3.8	3.2	2.3	Dec '07																
	Sep '08	2.9	4.2	3.0	2.7	1.1	4.1	4.8	4.4	2.7	Mar '08																
	Dec '08	3.0	4.5	3.3	2.8	1.4	8.3	7.5	9.0	6.1	Jun '08																
	Mar '09	3.5	4.8	3.9	3.3	1.5	3.6	3.1	4.0	2.5	Sep '08																
	Jun '09	3.7	5.1	4.7	3.5	1.6	4.3	4.4	4.6	3.1	Dec '08																
	Sep '09	3.8	5.3	4.6	3.6	1.7	6.2	7.4	6.6	3.8	Mar '09																
Duration of Dependence on Income Assistance (As of September 2009)		All* Income Assistance Recipients as % of Total Pop 0-64: Region Compared to B.C.					EI Beneficiaries Aged 19-64 as % of Working Age Population																				
Region		Percent					Percent																				
Total Number of Recipients	3,281																										
Percent Distribution by Duration		<table border="1"> <thead> <tr> <th>Region</th> <th>B.C.</th> </tr> </thead> <tbody> <tr> <td>&lt;1 Year</td> <td>65.3</td> </tr> <tr> <td>1-2 Years</td> <td>18.2</td> </tr> <tr> <td>&gt;2 Years</td> <td>16.4</td> </tr> </tbody> </table>					Region	B.C.	<1 Year	65.3	1-2 Years	18.2	>2 Years	16.4	<table border="1"> <thead> <tr> <th>Region</th> <th>B.C.</th> </tr> </thead> <tbody> <tr> <td>&lt;1 Year</td> <td>61.3</td> </tr> <tr> <td>1-2 Years</td> <td>19.4</td> </tr> <tr> <td>&gt;2 Years</td> <td>19.4</td> </tr> </tbody> </table>					Region	B.C.	<1 Year	61.3	1-2 Years	19.4	>2 Years	19.4
Region	B.C.																										
<1 Year	65.3																										
1-2 Years	18.2																										
>2 Years	16.4																										
Region	B.C.																										
<1 Year	61.3																										
1-2 Years	19.4																										
>2 Years	19.4																										
Source: Ministry of Children and Family Development administrative files and BC Stats population estimates. These figures include only a subset of those receiving income assistance. Excluded are those on Continuous Assistance (disabled or with persistent multiple barriers to employment, children in the home of a relative, and OAS/seniors. A recipient is defined as 'each person living in a family or living alone that is receiving basic income assistance'. Data does not include Aboriginal people living on Reserve. Note: '-' Data too small to release.							Source: Ministry of Housing and Social Development and BC Stats population estimates.																				
12 Dependence on Basic Income Assistance and/or Employment Insurance (Basic Income Assistance Recipients + Employment Insurance Recipients in Subject Group as a percent of Reference Group)																											
Subject Group (receiving assistance)		All (19-64)	Young Adults (19-24)	'Mid' Group (25-54)	'Older' Group (55-64)	All 'Safety Net' Recipients as % of Total Pop 19-64: Region Compared to B.C.																					
Reference Group		Total Pop. 19-64	Total Pop. 19-24	Total Pop. 25-54	Total Pop. 55-64	Percent																					
Fraser-Ft. George Regional District	Mar '07	5.2	6.3	5.6	3.0																						
	Jun '07	5.0	5.4	5.5	3.1																						
	Sep '07	4.3	4.7	4.7	2.5																						
	Dec '07	5.2	6.2	5.5	3.2																						
	Mar '08	6.3	7.4	6.8	3.5																						
	Jun '08	10.5	10.4	11.5	7.0																						
	Sep '08	5.9	6.0	6.5	3.5																						
	Dec '08	6.7	7.6	7.2	3.9																						
	Mar '09	9.1	11.2	9.8	4.9																						

Note: The EI figures reported above no longer include persons claiming parental/adoption leave. Previous issues of this table did include them.



**Fraser-Fort George  
Regional District**

**13 Demographics**

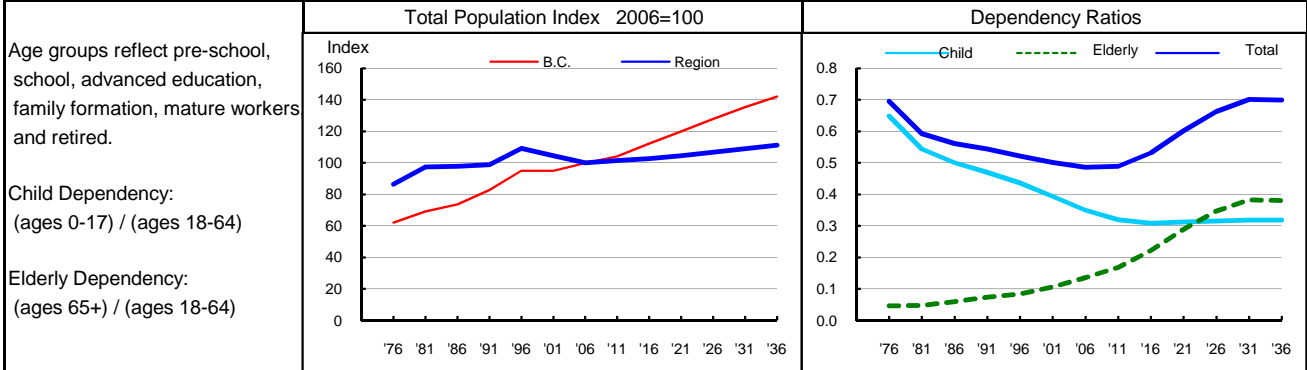
The downturn in the forest sector in the mid-eighties and early nineties was responsible for much of the net out-migration from the area at that time. In the mid-nineties the area received large net inflows of migrants. However, in 1997 to the present the area experienced significant net out-flows again. The population has aged more quickly than the provincial population, adding over nine years to its median age since the mid 1980s, compared with a provincial gain of 7.2 years. Nonetheless, Fraser-Fort George has a young population, with a median age three years younger than the provincial median. Fertility has decreased over the last twenty years, but remains above provincial levels. Child dependency ratios have declined sharply since the mid 1980s, but also remain higher than ratios for British Columbia as a whole. Conversely, the ratio of elderly (aged 65 and over) to working age population is lower than the provincial ratio despite doubling in the last two decades. The dependence on the forest sector and the male-dominated employment in the industry is likely the reason for a sex ratio that is weighted in favour of males. Relatively high fertility, together with a younger age structure, is responsible for the significant, but declining, excess of births over deaths. Natural increase has offset some of the migration outflows, but in seven of the last ten years there has been a population decline.

**14 Projection**

Early in the period this region will see large outflows of migrants, but by the second decade migration will shift and there will be significant inflows. Natural increase (excess of births over deaths) is expected to be positive until the latter portion of the projection period. These two sources of change should leave the population relatively stable. In the first half of the projection, growth is mainly due to gains from natural increase, while in the second half of the projection growth is driven by net migration inflows. The elderly dependency ratio is expected to increase as the population continues to age and, by 2036, the region is projected to have about 7 dependents for every 10 people of working age.

**15 Selected Demographic Characteristics**

Year	Population by age group, Thousands of persons							House-holds (,000)	Dependency Ratios			Year
	0-4	5-17	18-24	25-44	45-64	65+	All Ages		Child	Elderly	Total	
1976	8.3	22.9	11.9	25.9	10.4	2.3	81.7	23.7	0.648	0.047	0.696	1976
1981	8.8	22.6	13.9	31.6	12.3	2.8	92.0	29.1	0.544	0.048	0.592	1981
1986	8.4	21.3	11.7	33.2	14.3	3.6	92.4	31.0	0.501	0.060	0.561	1986
1991	7.7	20.7	10.1	34.0	16.3	4.5	93.3	32.0	0.470	0.074	0.544	1991
1996	7.6	21.9	11.1	36.4	20.3	5.8	103.0	36.3	0.436	0.085	0.521	1996
2001	6.0	19.9	10.1	31.9	23.8	7.0	98.7	37.2	0.394	0.107	0.501	2001
2006	5.3	16.9	9.8	27.1	26.6	8.6	94.4	37.2	0.350	0.136	0.486	2006
2011	5.6	15.0	9.6	26.1	28.6	10.9	95.7	38.9	0.320	0.169	0.489	2011
2016	5.2	14.3	8.2	26.4	28.7	14.1	96.9	40.6	0.308	0.223	0.532	2016
2021	5.1	14.2	7.4	26.6	27.6	17.9	98.7	42.0	0.312	0.290	0.602	2021
2026	5.0	14.1	7.5	27.2	25.9	21.1	100.8	43.2	0.315	0.347	0.663	2026
2031	5.0	14.2	7.8	27.0	25.7	23.2	102.9	44.3	0.318	0.383	0.701	2031
2036	5.2	14.4	7.8	27.3	26.6	23.5	105.0	45.2	0.318	0.381	0.699	2036



Source: Population data are Projection P-34, run in Summer 2009. Figures are adjusted for Census undercount and are for July 1st of stated year.  
Note: Demographics and Projection notes in Tables 13 and 14 are from Projection P-33, run the Summer 2008.