



**Peace River
 Regional District**

1	General Economy
<p>Municipalities in Regional District: Chetwynd, Dawson Creek, Fort St. John, Hudson's Hope, Pouce Coupe, Taylor, Tumbler Ridge</p> <p>The main economic activities of this area are forestry, energy and oil and gas, mining, and agriculture. The area has several coal mines and more are in exploration or development phases. EnCana is currently developing a large year-round oil and gas project in the area. There are wind power projects proposed for this area. Power transmission upgrades and expansions are underway. The Timber Supply Areas located (wholly or in part) in this area are relatively healthy. The annual allowable cuts have remained steady for the past few years, after being increased in 2003. The area is also home to several large lumber and pulp and paper mills and remanufacturing facilities, some of which have announced closures or output reductions. The expansion of the oil and gas industry in the area is also fuelling construction activity. The area is home to over 1,600 farms and ranches. Cattle and horse ranching as well as grain farming are the important local agricultural activities. Backcountry, eco-tourism and cultural tourism are also growing in this area. The electric generation facilities in this region provide a substantial amount of power to the province.</p>	

The notes above and later in this report on Demographics and Projections are the basis for BC Stats population projection P33 completed in the Summer of 2008. The projections are updated annually to reflect known demographic shifts and economic conditions. Full projections with "Components of Change", "Special Age Groups", "5 Year Age Cohorts by Sex", and accompanying notes are available for B.C., the 8 development regions, the 28 regional districts, the 79 local health areas (LHAs) and a number of "special areas" of local interest which are not part of a province-wide geocoding system. Individual areas, including age and sex detail, are modestly priced. Users requiring only total population projections are able to self serve for free from our population projection page: www.bcstats.gov.bc.ca/data/pop/pop/popproj.asp The full B.C. level projection is available free on the above page.

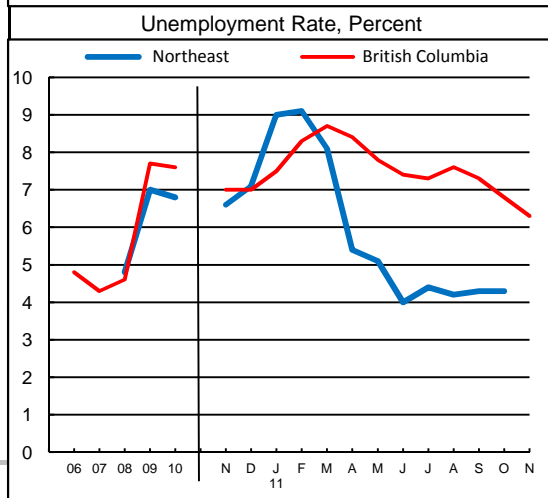
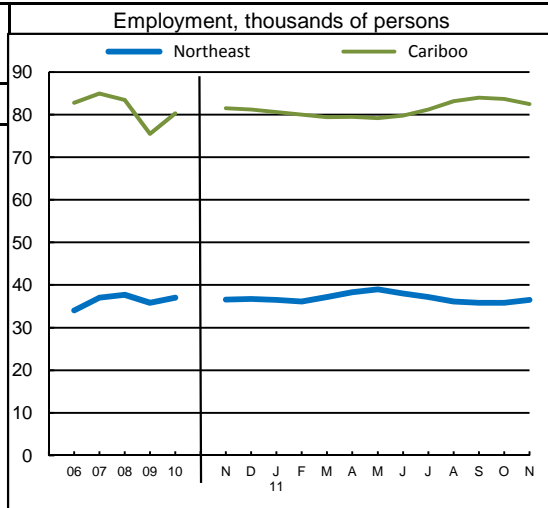
2		Economic Structure - Number of Business Locations, by Sector, by Employment Size, December 2010									
NAICS Code	Industry Sector based on NAICS Canada (North American Industrial Classification System)	Peace River-Liard								British Columbia	
		Locations With No Employees	Firms with Employees							With Employees	
			Less Than 20	20 to 49	50 to 199	200 Plus	All Sizes with Emp.	Percent of Total	Percent of Total	All Sizes	
	Total, All Industries	2,828	3,120	229	100	20	3,469	100.0%	100.0%	370,262	
11	Agric., Forestry, Fishing & Hunt	624	224	10	0	0	234	6.7%	4.1%	15,134	
21	Mining & Oil & Gas Extract.	178	302	26	16	1	345	9.9%	0.6%	2,220	
22	Utilities	1	8	1	0	0	9	0.3%	0.1%	363	
23	Construction	394	458	34	15	5	512	14.8%	14.0%	51,926	
31	Manufacturing (31-33)	34	58	3	5	2	68	2.0%	3.2%	11,824	
41	Wholesale Trade	45	118	14	1	0	133	3.8%	4.4%	16,471	
44	Retail Trade (44-45)	103	253	24	19	3	299	8.6%	8.1%	30,041	
48	Transp. & Warehousing (48-49)	279	332	15	3	1	351	10.1%	5.1%	18,964	
51	Information & Cultural Indust.	3	25	3	0	0	28	0.8%	1.5%	5,509	
52	Finance & Insurance	61	49	9	4	1	63	1.8%	5.4%	19,946	
53	Real Estate & Rental & Leasing	337	107	7	2	0	116	3.3%	11.2%	41,389	
54	Profes'nl, Scientif. & Tech. Srv	216	273	15	3	0	291	8.4%	13.1%	48,449	
55	Mgmt. of Companies & Enter.	87	15	1	0	0	16	0.5%	3.9%	14,283	
56	Admin. & Sup'rt, Waste Mgmt.	98	137	4	4	0	145	4.2%	4.5%	16,769	
61	Educational Services	14	33	3	0	3	39	1.1%	1.2%	4,290	
62	Health Care & Social Assistance	36	160	12	7	3	182	5.2%	5.6%	20,661	
71	Arts, Entertainment & Recreation	22	41	2	1	0	44	1.3%	1.7%	6,187	
72	Accom. & Food Services	58	109	31	9	1	150	4.3%	4.3%	15,964	
81	Other Serv's (ex. Public Admin.)	237	416	12	2	0	430	12.4%	7.8%	28,939	
91	Public Administration	1	2	3	9	0	14	0.4%	0.3%	933	

Source: Statistics Canada, Business Register Division. Note: This table formerly identified **business establishments**.



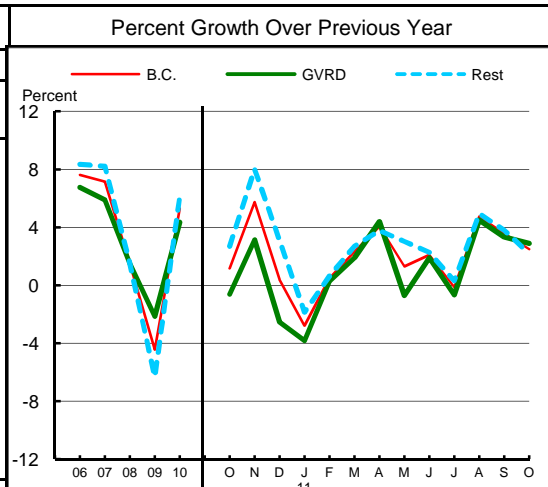
**Peace River
 Regional District**

3 Employment and Unemployment Rate, monthly data are 3-month moving average, actual, ending in stated month						
	Northeast		Cariboo		British Columbia	
	Emp. ('000)	Unemp. %	Emp. ('000)	Unemp. %	Emp. ('000)	Unemp. %
2001	32.5	6.1	79.2	9.7	1,919.7	7.7
2002	33.3	9.0	77.3	12.6	1,952.8	8.5
2003	35.0	6.4	77.3	11.0	1,998.0	8.0
2004	33.5	5.4	79.4	9.2	2,032.8	7.2
2005	34.2	4.7	79.3	7.4	2,091.9	5.8
2006	34.0	NA	82.8	6.1	2,147.2	4.8
2007	37.0	NA	85.0	5.1	2,222.6	4.3
2008	37.7	4.8	83.5	6.7	2,266.4	4.6
2009	35.8	7.0	75.5	12.1	2,217.9	7.7
2010	37.0	6.8	80.3	8.1	2,256.5	7.6
Jan	36.9	4.9	74.7	12.1	2,219.8	8.0
Feb	37.1	4.4	74.6	11.6	2,213.3	8.1
Mar	37.3	4.6	75.0	10.4	2,213.2	8.2
Apr	37.6	5.5	77.2	8.2	2,224.5	7.8
May	37.3	7.0	78.9	7.5	2,238.7	7.8
Jun	37.4	7.7	81.7	7.1	2,258.8	7.6
Jul	37.2	7.2	82.7	8.6	2,277.1	7.7
Aug	37.4	6.7	83.9	8.4	2,289.9	7.8
Sep	36.7	7.6	83.1	8.4	2,284.5	7.8
Oct	36.6	7.6	82.3	7.6	2,278.8	7.5
Nov	36.6	6.6	81.5	7.1	2,273.6	7.0
Dec	36.7	7.1	81.2	7.0	2,269.6	7.0
2011						
Jan	36.5	9.0	80.6	7.2	2,250.0	7.5
Feb	36.1	9.1	80.0	7.5	2,232.3	8.3
Mar	37.2	8.1	79.4	7.6	2,227.7	8.7
Apr	38.3	5.4	79.5	7.1	2,240.5	8.4
May	39.0	5.1	79.2	7.2	2,261.0	7.8
Jun	38.0	4.0	79.8	7.4	2,280.1	7.4
Jul	37.2	4.4	81.2	7.5	2,295.3	7.3
Aug	36.1	4.2	83.2	8.1	2,298.0	7.6
Sep	35.8	4.3	84.0	8.1	2,300.7	7.3
Oct	35.8	4.3	83.7	7.8	2,299.8	6.8
Nov	36.5	NA	82.5	6.9	2,296.6	6.3
Dec						
Average:						
Jan-Nov10	37.2	6.3	80.1	8.4	2,256.8	7.7
Jan-Nov11	37.0	NA	81.1	7.5	2,273.7	7.5
% Change	-0.3		1.3		0.7	



Source: Labour Force Survey, Statistics Canada. Sub-provincial regions are development regions or census metropolitan areas.

4 Retail Sales - based on Statistics Canada monthly survey						
Year or Year/Year-to-Date	\$ millions of retail sales			Percent change on year ago		
	B.C.	Greater Vancouver	Rest of Province	B.C.	Greater Vancouver	Rest of Province
2006	53,133.4	24,301.6	28,831.9	7.6	6.7	8.3
2007	56,930.4	25,733.1	31,197.3	7.1	5.9	8.2
2008	57,783.0	26,116.0	31,667.0	1.5	1.5	1.5
2009	55,221.9	25,556.4	29,665.6	-4.4	-2.1	-6.3
2010	58,144.7	26,667.6	31,477.1	5.3	4.3	6.1
Jan-Sep 2010	42,773.1	19,620.4	23,152.6			
Jan-Sep 2011	43,551.2	19,871.0	23,680.1	1.8	1.3	2.3



Source: B.C. & GVRD data - Statistics Canada, CANSIM 080-0020, unadjusted data.



Peace River
 Regional District

Was 5 **Manufacturing Principal Statistics - Search at www.made-in-bc.ca for local firms, products and more**

This table is discontinued. Sub-provincial manufacturing principal statistics are no longer being produced.

The methodology used to generate Room Revenue estimates is being refined and as a result the regularly scheduled release of the data from April through August 2011 was interrupted. BC Stats will be publishing updated estimates, including revisions to previously-released data, in September of 2011. We apologize for any inconvenience to users.

5 Tourism Room Revenue - Includes Northern Rockies R.D. (\$ Thousands)								
	Year	Total/YTD	Q1	Q2	Q3	Q4	Tourism Room Revenue Index 2004=100	
							B.C.	Region
Northern Rockies Regional District	2006	73,976.0	20,004.0	16,384.0	20,875.0	16,713.0		
	2007	68,504.0	19,521.0	14,577.0	18,720.0	15,686.0		
	2008	77,098.0	19,052.0	16,952.0	21,185.0	19,909.0		
	2009	67,575.0	19,386.0	13,932.0	17,081.0	17,176.0		
	2010	58,408.0	19,016.0	17,473.0	21,919.0			
British Columbia	2006	1,807,466.0	366,131.0	450,720.0	652,402.0	338,213.0		
	2007	1,807,466.0	366,131.0	450,720.0	652,402.0	338,213.0		
	2008	1,977,385.0	435,234.0	503,243.0	687,790.0	351,118.0		
	2009	1,743,074.0	378,897.0	423,761.0	617,008.0	323,408.0		
	2010	1,594,984.0	502,294.0	441,819.0	650,871.0			
2009 Room Revenue by Accommodation Type (\$Thousands %Share)								
TOTAL	67,700.0	100.0%						
Hotels	50,350.0	74.4%						
1-75 Rooms	10,135.0	15.0%						
Motels	11,867.0	17.5%						
*City of Dawson Creek	15,459.0	22.8%						
*City of Fort St. John	16,996.0	25.1%						
asterisk before location denotes sub-area detail								

Source: Hotel tax database maintained by Consumer Taxation Branch, Ministry of Small Business and Revenue
 Published in detail monthly by BC Stats.

All room revenue data has been revised. For an explanation, see our periodical called Tourism Sector Monitor, April and May issues of 2009.
 Link to explanation of changes: http://www.bcstats.gov.bc.ca/pubs/pr_tour.asp

6 Building Permits								
Year	Total Building Permits	Non Residential				Residential		Total Permits Index 2005=100
		Total Non Res.	Industrial	Commercial	Institutional & Gov't			
<-- \$ Millions -->							Units	
2003	55.6	28.1	6.8	19.9	1.3	27.5	253	
2004	105.9	69.6	49.0	18.7	1.9	36.3	187	
2005	149.1	104.4	30.8	66.7	6.9	44.6	230	
2006	202.4	121.1	5.1	102.2	13.7	81.3	418	
2007	163.7	72.8	26.8	31.5	14.5	90.9	571	
2008	148.9	83.5	16.4	60.8	6.3	65.3	267	
2009	93.0	34.0	7.1	17.3	9.6	59.0	237	
2010	139.1	65.1	14.6	36.8	13.7	74.1	360	
Jan-Oct 10	131.3	62.9	13.9	35.3	13.7	68.4	336	
Jan-Oct 11	146.3	82.0	33.4	31.3	17.3	64.3	252	

Not all projects require a building permit, and not all municipalities & regions report. Latest month preliminary, previous month is revised.
 Source: Statistics Canada (data collected from municipal and Regional District offices).

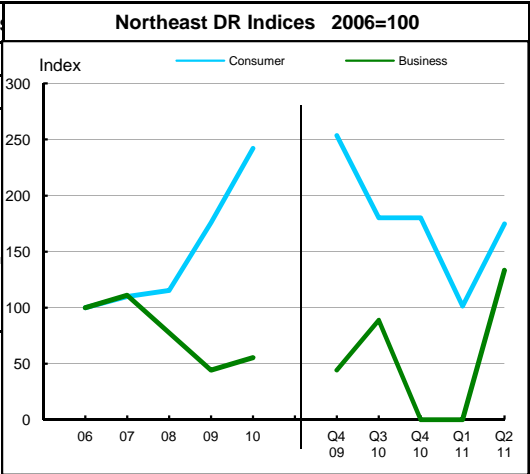


**Peace River
 Regional District**

7 Business and Consumer Bankruptcies, Metro/Development Region						
Year	Northeast DR		British Columbia			
	Consumer	Business	Consumer	Business	Consumer	Business
2006	71	9	7,020	585		
2007	78	10	6,651	470		
2008	82	7	7,293	454		
2009	125	4	10,639	380		
2010	172	5	9,674	229		
YTD-10	108	3	5,023	132		
YTD-11	49	3	4,261	97		

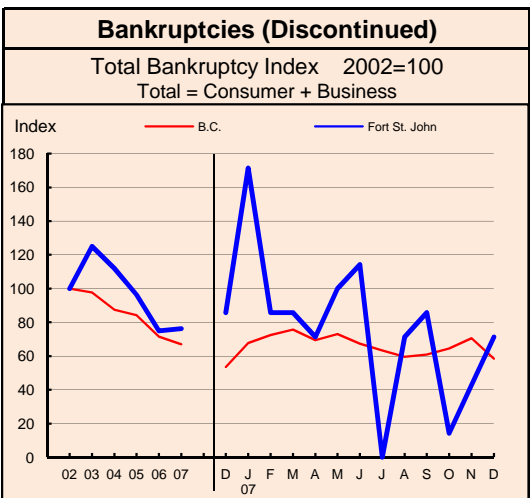
Source: Office of the Superintendent of Bankruptcy, Government of Canada
 Total bankruptcy index includes business and consumer bankruptcies.

Note: Bankruptcy is not a good measure of business failure. Most firms that fail wind down operations and withdraw from business.



8 Incorporations			
Year	Incorporations	Incorporations Index 2005=100	
		B.C.	Region
2003	270		
2004	348		
2005	533		
2006	616		
2007	508		
2008	409		
2009	319		
2010	427		
Jan-Sep 10	298		
Jan-Sep 11	387		

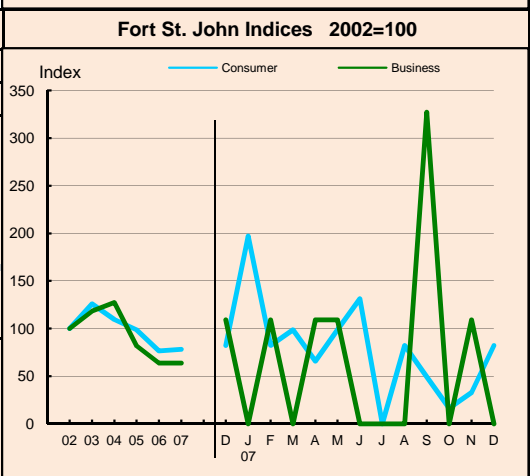
Source: Incorporations - (B.C.) Ministry of Finance



9 Business and Consumer Bankruptcies (Discontinued)						
Year	Fort St. John		Dawson Creek		B.C.	
	Consumer	Business	Consumer	Business	Consumer	Business
2003	92	13	27	7	9,385	1,002
2004	80	14	28	4	8,378	922
2005	72	9	29	0	8,173	786
2006	56	7	15	1	7,021	587
2007	57	7	13	3	6,651	470
Jan-Dec 06	56	7	15	1	7,022	587
Jan-Dec 07	57	7	13	3	6,651	470

Source: Office of the Superintendent of Bankruptcy, Government of Canada
 Total bankruptcy index includes business and consumer bankruptcies.

Note: Bankruptcy is not a good measure of business failure. Most firms that fail wind down operations and withdraw from business.





Peace River
 Regional District

Dependence on the Safety Net

10 Basic Income Assistance (Basic Income Assistance Recipients in Subject Group as a percent of Reference Group)							11 Employment Insurance (was UI) (EI beneficiaries as a percent of Reference Group)									
Subject Group (receiving benefits)		All (0-64)	Children <19 yrs in Families	Young Adults (19-24)	'Mid' Group (25-54)	Single Parent Women	Working Age (19-64)	Young Adults (19-24)	'Mid' Group (25-54)	'Older' Workers (55-64)	Note Older Data					
Reference Group		Total Pop. 0-64	Total Pop. <19	Total Pop. 19-24	Total Pop. 25-54	Tot. Female 19-64	Total Pop. 19-64	Total Pop. 19-24	Total Pop. 25-54	Total Pop. 55-64						
Peace River Regional District	Sep '08	1.2	1.7	1.3	1.1	0.7	1.7	1.6	1.8	1.6	Sep '07					
	Dec '08	1.4	1.8	1.6	1.2	0.7	1.9	2.1	1.9	1.7	Dec '07					
	Mar '09	1.7	2.1	1.9	1.6	0.9	1.9	1.9	1.9	1.6	Mar '08					
	Jun '09	1.9	2.6	2.1	1.7	1.0	4.7	4.2	4.9	4.2	Jun '08					
	Sep '09	1.8	2.5	2.0	1.6	1.0	1.7	1.5	1.8	1.4	Sep '08					
	Dec '09	2.0	2.6	2.5	1.8	1.1	2.1	2.0	2.3	1.7	Dec '08					
	Mar '10	2.0	2.7	2.5	1.8	1.1	3.8	4.0	4.0	2.8	Mar '09					
	Jun '10	1.9	2.6	2.5	1.7	1.0	4.8	5.9	4.9	3.7	Jun '09					
	Sep '10	1.7	2.4	1.9	1.5	1.0	4.2	4.7	4.3	3.1	Sep '09					
	Duration of Dependence on Income Assistance (As of September 2010)		All* Income Assistance Recipients as % of Total Pop 0-64: Region Compared to B.C.					EI Beneficiaries Aged 19-64 as % of Working Age Population								
Region		Percent					Percent									
B.C.		Region					B.C.					Region				
Total Number of Recipients	953	75,506														
Percent Distribution by Duration																
<1 Year	61.7	56.9														
1-2 Years	23.5	24.5														
>2 Years	14.8	18.6														
Source: Ministry of Social Development administrative files and BC Stats population estimates. These figures include only a subset of those receiving income assistance. Excluded are those on Continuous Assistance (disabled or with persistent multiple barriers to employment, children in the home of a relative, and OAS/seniors. A recipient is defined as 'each person living in a family or living alone that is receiving basic income assistance'. Data does not include Aboriginal people living on Reserve. Note: '-' Data too small to release.							Source: Ministry of Social Development and BC Stats population estimates.									
12 Dependence on Basic Income Assistance and/or Employment Insurance (Basic Income Assistance Recipients + Employment Insurance Recipients in Subject Group as a percent of Reference Group)																
Subject Group (receiving assistance)		All (19-64)	Young Adults (19-24)	'Mid' Group (25-54)	'Older' Group (55-64)	All 'Safety Net' Recipients as % of Total Pop 19-64: Region Compared to B.C.										
Reference Group		Total Pop. 19-64	Total Pop. 19-24	Total Pop. 25-54	Total Pop. 55-64	Percent										
Peace River Regional District	Sep '07	2.6	2.5	2.7	2.2											
	Dec '07	2.9	2.9	3.0	2.3											
	Mar '08	2.8	2.9	3.0	2.1											
	Jun '08	5.7	5.4	5.9	4.7											
	Sep '08	2.7	2.7	2.9	1.8											
	Dec '08	3.2	3.5	3.4	2.1											
	Mar '09	5.2	5.8	5.5	3.4											
	Jun '09	6.3	7.8	6.5	4.4											
	Sep '09	5.7	6.7	5.9	3.7											

Note: This data should be revamped in early 2012 with EI data coming from Statistics Canada and IA data from Ministry of Social Development.



**Peace River
 Regional District**

13 Demographics

This area has generally experienced net out-flows, except for a period in the mid 1990s and since 2004. Overall, Peace River has experienced modest growth over the last two decades. The population has aged slightly more slowly than the provincial population, adding 6.7 years to its median age since the mid 1980s. Despite this ageing, Peace River is a very young population, with a 2007 median age over six years younger than the provincial median. Fertility rates have declined slightly, but they continue to be extremely high relative to provincial rates. High fertility contributes to child dependency ratios that continue to be much higher than provincial ratios, despite dropping over the last two decades. On the other hand, elderly dependency is on the rise, although it remains a small part of overall dependency. The sex ratio for this sparsely populated region is heavily weighted in favour of males, in contrast to the province as a whole, which has more women than men. This is likely due to the predominance of male-dominated occupations in the area. High fertility and a younger age structure means that births outnumber deaths by a significant, but diminishing, margin. Natural increase (i.e., the excess of births over deaths) has offset some of the migration outflows, but from 1997 to 2003 the population shrank. Most recently, some large net inflows have combined with natural increase, resulting in some significant growth since 2003..

14 Projection

The increased activity in the oil and gas industry should result in population growth for this region. The long term net in-flows combined with a positive natural increase (births minus deaths) will likely result in positive, though diminishing, population growth rates for the area until the end of the projection period. The population in this region is expected to increase by about 17,000 by 2036. Overall dependency will increase as the population ages and, by 2036, this region will likely have over 6.5 dependents for every 10 people of working age.

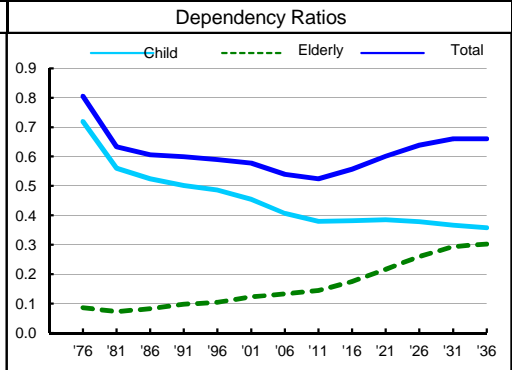
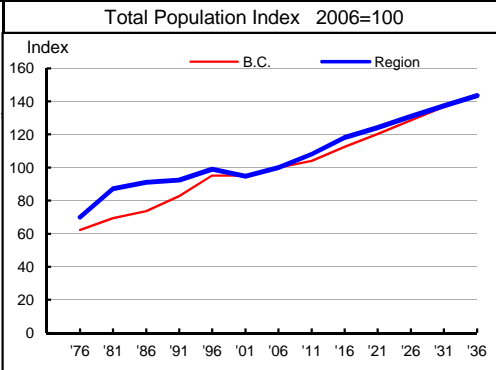
15 Selected Demographic Characteristics

Year	Population by age group, Thousands of persons							House-holds (,000)	Dependency Ratios			Year
	0-4	5-17	18-24	25-44	45-64	65+	All Ages		Child	Elderly	Total	
1976	4.0	12.5	5.5	11.4	6.1	2.0	41.5	11.7	0.719	0.085	0.805	1976
1981	5.1	12.7	8.6	15.9	7.1	2.3	51.8	16.2	0.560	0.073	0.633	1981
1986	5.3	12.3	6.9	18.5	8.3	2.8	54.0	18.4	0.524	0.082	0.606	1986
1991	5.0	12.2	5.9	19.3	9.1	3.4	54.9	19.2	0.501	0.098	0.599	1991
1996	5.0	13.0	6.0	20.4	10.6	3.8	58.8	20.6	0.486	0.104	0.589	1996
2001	4.1	12.1	5.7	18.1	11.8	4.3	56.2	20.8	0.455	0.122	0.577	2001
2006	4.2	11.5	6.5	17.6	14.4	5.1	59.3	22.1	0.407	0.133	0.540	2006
2011	4.8	11.2	6.7	18.6	16.9	6.1	64.2	23.8	0.380	0.144	0.524	2011
2016	4.9	12.3	6.3	21.0	17.7	7.9	70.1	25.9	0.382	0.175	0.557	2016
2021	4.7	13.0	6.0	21.9	18.1	9.9	73.7	27.5	0.385	0.216	0.600	2021
2026	4.7	13.3	6.7	22.1	18.7	12.3	77.6	29.3	0.379	0.260	0.638	2026
2031	4.8	13.2	7.3	21.8	20.0	14.4	81.4	31.1	0.367	0.294	0.660	2031
2036	5.1	13.2	7.3	22.3	21.7	15.5	85.2	32.8	0.358	0.302	0.660	2036

Age groups reflect pre-school, school, advanced education, family formation, mature workers and retired.

Child Dependency:
 (ages 0-17) / (ages 18-64)

Elderly Dependency:
 (ages 65+) / (ages 18-64)



Source: Population data are Projection P-36, run in Summer 2011. Figures are adjusted for Census undercount and are for July 1st of stated year.
 Note: Demographics and Projection notes in Tables 13 and 14 are from Projection P-33, run the Summer 2008.