



Stikine  
Region

<b>1</b>	<b>General Economy</b>
<p>The main economic activities of this area are mining and forestry. Considerable mining exploration has occurred recently in the area. Several copper, zinc or molybdenum mines are in the proposal or development stages. Mining will likely impact local communities through spin-off activities. Forestry activity is restricted to logging as there are no processing facilities in the region. There are several large parks in the area, and back-country tourism options exist for further development in the area.</p>	

The notes above and later in this report on Demographics and Projections are the basis for BC Stats population projection P33 completed in the Summer of 2008. The projections are updated annually to reflect known demographic shifts and economic conditions. Full projections with "Components of Change", "Special Age Groups", "5 Year Age Cohorts by Sex", and accompanying notes are available for B.C., the 8 development regions, the 28 regional districts, the 79 local health areas (LHAs) and a number of "special areas" of local interest which are not part of a province-wide geocoding system. Individual areas, including age and sex detail, are modestly priced. Users requiring only total population projections are able to self serve for free from our population projection page: [www.bcstats.gov.bc.ca/data/pop/pop/popproj.asp](http://www.bcstats.gov.bc.ca/data/pop/pop/popproj.asp) The full B.C. level projection is available free on the above page.

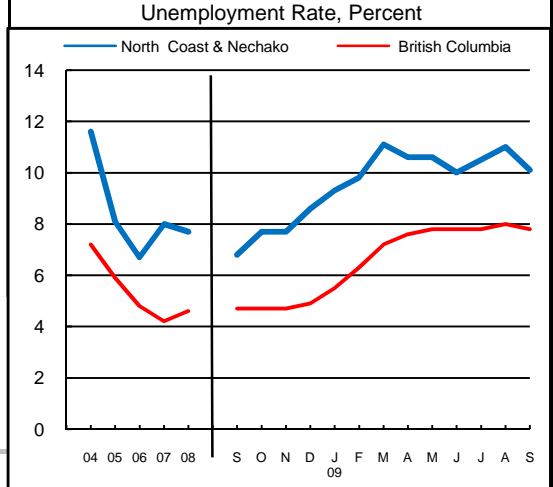
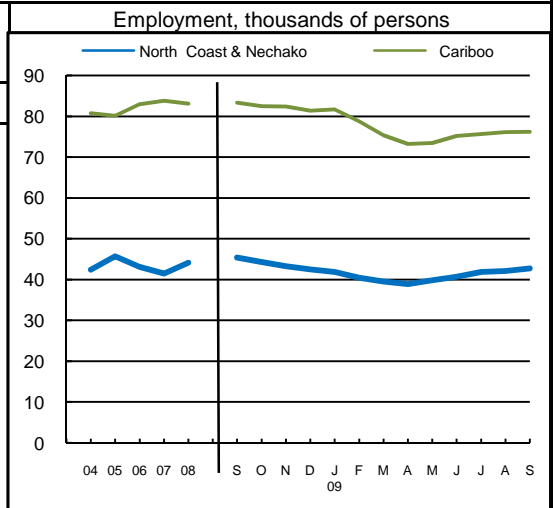
<b>2</b>		<b>Economic Structure - Number of Business Locations, by Sector, by Employment Size, December 2008</b>								
NAICS Code	Industry Sector based on NAICS Canada (North American Industrial Classification System)	Locations With No Employees	Stikine						British Columbia	
			Firms with Employees						With Employees	
			Less Than 20	20 to 49	50 to 199	200 Plus	All Sizes with Emp.	Percent of Total	Percent of Total	All Sizes
	Total, All Industries	47	53	4	4	0	61	100.0%	100.0%	175,003
11	Agric., Forestry, Fishing & Hunt	1	2	0	0	0	2	3.3%	4.0%	7,009
21	Mining & Oil & Gas Extract.	1	1	0	0	0	1	1.6%	0.6%	1,071
22	Utilities	1	0	0	0	0	0	0.0%	0.1%	203
23	Construction	8	8	0	1	0	9	14.8%	12.1%	21,108
31	Manufacturing (31-33)	2	1	0	0	0	1	1.6%	4.5%	7,879
41	Wholesale Trade	1	0	0	0	0	0	0.0%	5.9%	10,359
44	Retail Trade (44-45)	5	11	0	0	0	11	18.0%	11.9%	20,742
48	Transp. & Warehousing (48-49)	4	4	0	0	0	4	6.6%	4.4%	7,734
51	Information & Cultural Indust.	-	0	0	0	0	0	0.0%	1.4%	2,412
52	Finance & Insurance	1	1	0	0	0	1	1.6%	3.8%	6,564
53	Real Estate & Rental & Leasing	4	2	1	0	0	3	4.9%	4.5%	7,835
54	Profes'nl, Scientif. & Tech. Srv	6	3	1	0	0	4	6.6%	11.0%	19,278
55	Mgmt. of Companies & Enter.	-	2	0	0	0	2	3.3%	1.6%	2,818
56	Admin. & Sup'rt, Waste Mgmt.	2	0	1	0	0	1	1.6%	4.9%	8,513
61	Educational Services	-	0	0	1	0	1	1.6%	1.4%	2,363
62	Health Care & Social Assistance	-	2	0	0	0	2	3.3%	8.4%	14,773
71	Arts, Entertainment & Recreation	6	2	0	1	0	3	4.9%	1.6%	2,873
72	Accom. & Food Services	2	8	0	1	0	9	14.8%	6.7%	11,639
81	Other Serv's (ex. Public Admin.)	3	4	1	0	0	5	8.2%	10.9%	19,095
91	Public Administration	-	2	0	0	0	2	3.3%	0.4%	735

Source: Statistics Canada, Business Register Division. Note: This table formerly identified **business establishments**.



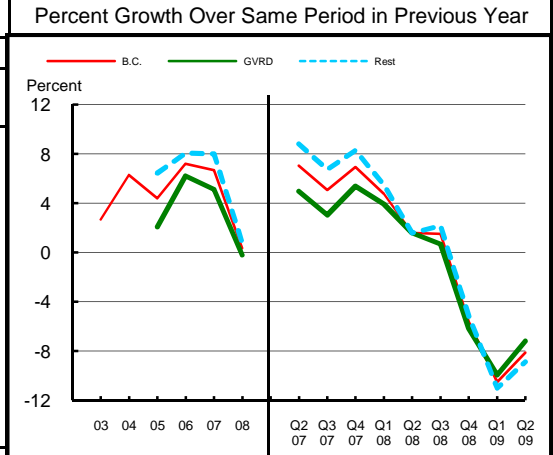
Stikine  
Region

<b>3 Employment and Unemployment Rate, monthly data are 3-month moving average, actual, ending in stated month</b>							
	North Coast & Nechako		Cariboo		British Columbia		
	Emp. ('000)	Unemp. %	Emp. ('000)	Unemp. %	Emp. ('000)	Unemp. %	
1999	46.7	8.8	81.4	11.6	1,894.4	8.3	
2000	47.3	10.2	79.1	9.9	1,931.3	7.1	
2001	46.6	11.2	79.4	9.7	1,921.6	7.7	
2002	44.9	12.6	78.0	12.7	1,965.0	8.5	
2003	44.8	11.3	78.2	11.1	2,014.7	8.0	
2004	42.4	11.6	80.7	9.1	2,062.7	7.2	
2005	45.7	8.1	80.1	7.4	2,130.5	5.9	
2006	43.1	6.7	82.9	6.1	2,195.5	4.8	
2007	41.5	8.0	83.8	5.1	2,266.3	4.2	
2008	44.1	7.7	83.1	6.5	2,314.3	4.6	
2008 Jan	41.5	8.2	88.0	5.2	2,286.5	4.1	
2008 Feb	42.1	7.3	86.5	5.8	2,278.9	4.2	
2008 Mar	43.3	7.1	84.0	6.8	2,284.9	4.4	
2008 Apr	44.3	7.9	82.9	7.7	2,295.0	4.4	
2008 May	44.4	8.6	82.7	7.9	2,313.3	4.5	
2008 Jun	45.4	8.5	83.5	7.0	2,329.8	4.4	
2008 Jul	45.8	7.5	83.4	6.9	2,345.0	4.5	
2008 Aug	46.5	7.6	83.2	7.2	2,350.7	4.6	
2008 Sep	45.4	6.8	83.3	6.8	2,337.7	4.7	
2008 Oct	44.3	7.7	82.5	6.4	2,325.3	4.7	
2008 Nov	43.3	7.7	82.4	5.5	2,312.5	4.7	
2008 Dec	42.5	8.6	81.4	5.6	2,304.8	4.9	
2009 Jan	41.9	9.3	81.7	6.1	2,278.4	5.5	
2009 Feb	40.5	9.8	78.8	7.8	2,251.1	6.3	
2009 Mar	39.5	11.1	75.3	10.0	2,227.5	7.2	
2009 Apr	38.9	10.6	73.2	12.0	2,229.0	7.6	
2009 May	39.8	10.6	73.4	12.9	2,243.1	7.8	
2009 Jun	40.7	10.0	75.2	13.5	2,264.6	7.8	
2009 Jul	41.9	10.5	75.6	14.2	2,275.9	7.8	
2009 Aug	42.1	11.0	76.1	13.3	2,280.5	8.0	
2009 Sep	42.7	10.1	76.2	12.4	2,275.8	7.8	
2009 Oct							
2009 Nov							
2009 Dec							
Average:							
ytd average	Jan-Sep08	44.7	7.4	83.6	6.9	2,317.5	4.5
based on	Jan-Sep09	40.9	10.4	75.5	12.0	2,256.0	7.6
actual data	% Change	-8.4		-9.7		-2.7	



Source: Labour Force Survey, Statistics Canada. Sub-provincial regions are development regions or census metropolitan areas.

<b>4 Retail Sales - based on Statistics Canada monthly survey</b>						
Year or Year/Quarter	\$ millions of retail sales			Percent change on year ago		
	B.C.	Greater Vancouver	Rest of Province	B.C.	Greater Vancouver	Rest of Province
2004	47,216.6	22,243.6	24,973.0	6.3	n/a	n/a
2005	49,286.3	22,702.6	26,583.7	4.4	2.1	6.4
Annual data 2006	52,837.1	24,110.2	28,726.9	7.2	6.2	8.1
2007	56,365.4	25,342.8	31,022.6	6.7	5.1	8.0
2008	56,562.4	25,290.5	31,271.8	0.3	-0.2	0.8
Quarterly data 08 2	14,749.1	6,626.3	8,122.8	1.6	1.6	1.6
08 3	14,923.3	6,466.4	8,456.9	1.5	0.7	2.2
08 4	14,053.2	6,340.4	7,712.7	-5.6	-6.2	-5.2
09 1	11,485.1	5,274.5	6,210.5	-10.5	-10.0	-11.0
09 2	13,550.1	6,150.0	7,400.1	-8.1	-7.2	-8.9



Source: B.C. & GVRD data - Statistics Canada, monthly survey (CANSIM 080-0015).



Stikine  
Region

**Was 5** **Manufacturing Principal Statistics - Search at [www.made-in-bc.ca](http://www.made-in-bc.ca) for local firms, products and more**

This table is discontinued. Sub-provincial manufacturing principal statistics are no longer being produced.

5		Tourism Room Revenue - Includes Bulkley-Nechako R.D. (\$ Thousands)					Tourism Room Revenue Index 2003=100		
Stikine Regional District	Year	Total/YTD	Q1	Q2	Q3	Q4	Index	B.C.	Region
		2005	9,649.4	1,956.5	2,341.1	3,331.6			
	2006	9,790.6	1,739.9	2,337.0	3,532.7	2,181.0			
	2007	11,246.4	1,862.4	2,696.4	4,111.8	2,575.8			
	2008	10,891.4	1,823.5	2,712.8	3,905.9	2,449.3			
	2009	3,947.7	1,577.9	2,369.8					
British Columbia	2005	1,681,563.6	351,779.6	404,639.8	610,273.7	314,870.6			
	2006	1,807,608.7	366,165.1	450,747.7	652,476.4	338,219.5			
	2007	1,963,958.7	412,949.3	488,493.9	697,545.2	364,970.3			
	2008	1,977,424.9	435,223.9	503,276.7	687,708.3	351,215.9			
	2009	802,329.6	378,880.1	423,449.6					
2008 Room Revenue by Accommodation Type (\$Thousands   %Share)									
TOTAL	10,805.0	100.0%							
Fishing lodges	845.0	7.8%							
Motels	4,783.0	44.3%							
*Town of Smithers	5,997.0	55.5%							

Source: Hotel tax database maintained by Consumer Taxation Branch, Ministry of Small Business and Revenue. Published in detail monthly by BC Stats.

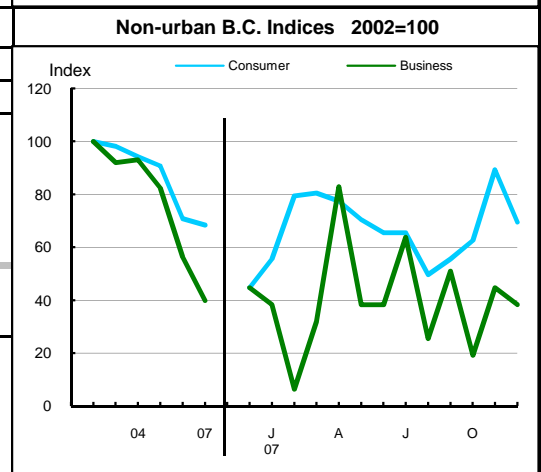
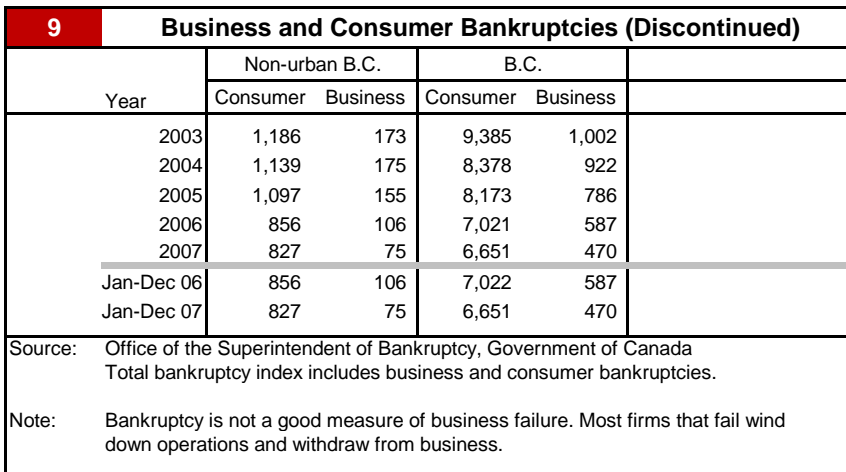
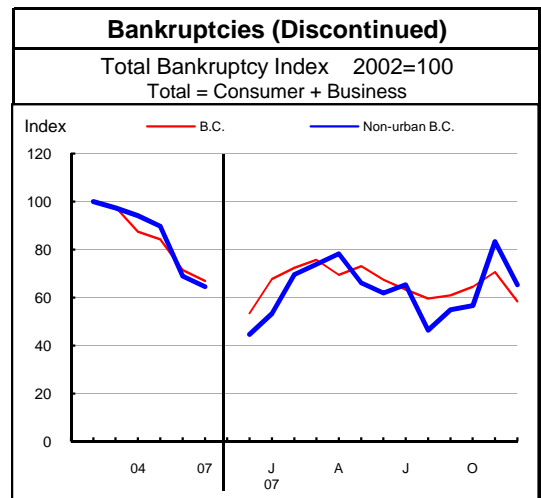
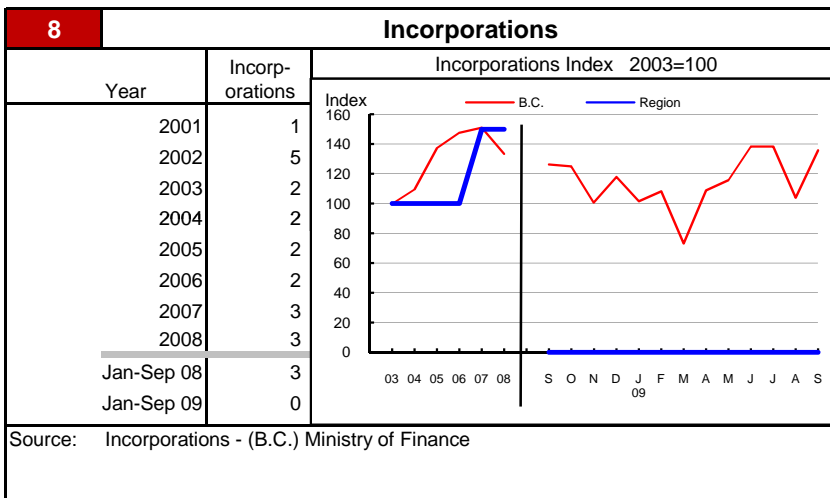
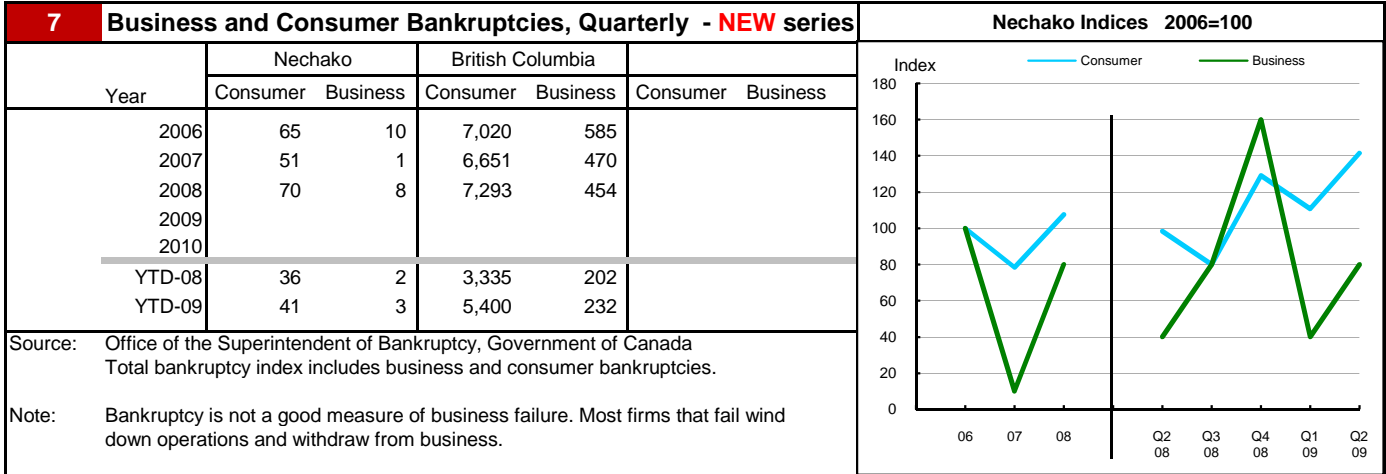
All room revenue data has been revised. For an explanation, see our periodical called *Tourism Sector Monitor*, April and May issues of 2009.  
Link to explanation of changes: [http://www.bcstats.gov.bc.ca/pubs/pr\\_tour.asp](http://www.bcstats.gov.bc.ca/pubs/pr_tour.asp)

6		Building Permits						Total Permits Index 2003=100		
Year	Total Building Permits	Non Residential				Residential		Index	B.C.	Region
		Total Non Res.	Industrial	Commercial	Institutional & Gov't	Units	Units			
2001	n/a	0.0	n/a	n/a	n/a	n/a	n/a			
2002	n/a	0.0	n/a	n/a	n/a	n/a	n/a			
2003	n/a	0.0	n/a	n/a	n/a	n/a	n/a			
2004	n/a	0.0	n/a	n/a	n/a	n/a	n/a			
2005	n/a	0.0	n/a	n/a	n/a	n/a	n/a			
2006	n/a	0.0	n/a	n/a	n/a	n/a	n/a			
2007	n/a	0.0	n/a	n/a	n/a	n/a	n/a			
2008	n/a	0.0	n/a	n/a	n/a	n/a	n/a			
Jan-Aug 08	n/a	0.0	n/a	n/a	n/a	n/a	n/a			
Jan-Aug 09	n/a	0.0	n/a	n/a	n/a	n/a	n/a			

Not all projects require a building permit, and not all municipalities & regions report. Latest month preliminary, previous month is revised.  
Source: Statistics Canada (data collected from municipal and Regional District offices).



Stikine  
Region





Stikine  
Region

Dependence on the Safety Net

10 Basic Income Assistance (Basic Income Assistance Recipients in Subject Group as a percent of Reference Group)							11 Employment Insurance (was UI) (EI beneficiaries as a percent of Reference Group)				
Subject Group (receiving benefits)		All (0-64)	Children <19 yrs in Families	Young Adults (19-24)	'Mid' Group (25-54)	Single Parent Women	Working Age (19-64)	Young Adults (19-24)	'Mid' Group (25-54)	'Older' Workers (55-64)	Note Older Data
Reference Group		Total Pop. 0-64	Total Pop. <19	Total Pop. 19-24	Total Pop. 25-54	Tot. Female 19-64	Total Pop. 19-64	Total Pop. 19-24	Total Pop. 25-54	Total Pop. 55-64	
Stikine Regional District	Sep '07	-	-	-	-	-	11.4	21.6	10.8	9.3	Mar '07
	Dec '07	0.7	-	-	1.5	0.7	5.4	-	5.4	-	Jun '07
	Mar '08	1.3	-	-	1.8	0.7	2.4	-	3.0	-	Sep '07
	Jun '08	-	-	-	-	0.7	5.7	-	6.5	-	Dec '07
	Sep '08	-	-	-	-	0.7	7.3	-	7.8	-	Mar '08
	Dec '08	-	-	-	-	-	5.7	8.7	5.9	4.1	Jun '08
	Mar '09	-	-	-	-	-	2.7	-	2.7	-	Sep '08
	Jun '09	-	-	-	-	-	6.6	-	8.2	-	Dec '08
	Sep '09	-	-	-	-	-	8.7	-	10.9	-	Mar '09
Duration of Dependence on Income Assistance (As of September 2009)		All* Income Assistance Recipients as % of Total Pop 0-64: Region Compared to B.C.					EI Beneficiaries Aged 19-64 as % of Working Age Population				
Region		Percent					Percent				
B.C.											
Total Number of Recipients	-	72,592									
Percent Distribution by Duration											
<1 Year	-	65.3									
1-2 Years	-	18.2									
>2 Years	-	16.4									
Source: Ministry of Children and Family Development administrative files and BC Stats population estimates. These figures include only a subset of those receiving income assistance. Excluded are those on Continuous Assistance (disabled or with persistent multiple barriers to employment, children in the home of a relative, and OAS/seniors. A recipient is defined as 'each person living in a family or living alone that is receiving basic income assistance'. Data does not include Aboriginal people living on Reserve. Note: '-' Data too small to release.							Source: Ministry of Housing and Social Development and BC Stats population estimates.				
12 Dependence on Basic Income Assistance and/or Employment Insurance (Basic Income Assistance Recipients + Employment Insurance Recipients in Subject Group as a percent of Reference Group)											
Subject Group (receiving assistance)		All (19-64)	Young Adults (19-24)	'Mid' Group (25-54)	'Older' Group (55-64)	All 'Safety Net' Recipients as % of Total Pop 19-64: Region Compared to B.C.					
Reference Group		Total Pop. 19-64	Total Pop. 19-24	Total Pop. 25-54	Total Pop. 55-64	Percent					
Stikine Regional District	Mar '07	-	-	-	-						
	Jun '07	-	-	-	-						
	Sep '07	-	-	-	-						
	Dec '07	6.7	-	8.0	-						
	Mar '08	8.5	-	9.6	-						
	Jun '08	-	-	-	-						
	Sep '08	-	-	-	-						
	Dec '08	-	-	-	-						
	Mar '09	-	-	-	-						

Note: The EI figures reported above no longer include persons claiming parental/adoption leave. Previous issues of this table did include them.



**Stikine  
Region**

**13 Demographics**

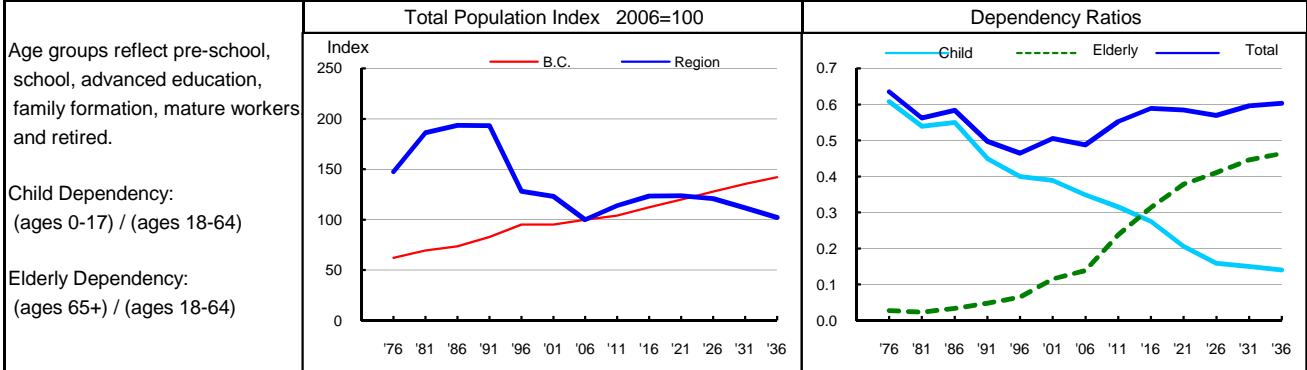
This area is very sparsely populated and this results in rather erratic demographic statistics. Stikine has experienced mainly net outflows which has resulted in an overall loss of population over the last twenty years. The population has aged quite rapidly, adding over 12 years to its median age since 1986, compared with a provincial gain of 7.2 years. This rapid ageing may be a factor of the net outflows characteristic of this region, as young people move out of the area, leaving older individuals behind. Fertility levels have been extremely variable, but have been much lower than provincial levels overall. Overall dependency rates are similar to those of the province as a whole, with 5.3 dependents for every ten people of working age. Child dependency ratios have been on the decline while the proportion of elderly dependents has been increasing over the last two decades. The sex ratio shows a substantial decrease over the period, but males continue to outnumber females by a significant margin. This is likely due to the dependence on resource extraction industries, which tends to draw male workers to the area. Natural increase values have been variable, a reflection of the variability in the numbers of births and deaths. Overall positive natural increase values have been unable to compensate for significant net outflows over the last twenty years and the population has dropped by roughly half.

**14 Projection**

Interprovincial migration to the province and to this region is forecast to be positive in the first half of the projection period, although the magnitude of many of these net inflows will likely be minimal. Births should continue to exceed deaths for the first decade of the projection, but by a decreasing margin. Natural increase is expected to become negative midway through the projection. Net inflows and positive natural increase will result in growth, and by 2019 this region will see a population larger than current levels by over 300 people. However, for the remainder of the period, growth rates are expected to be negative, resulting in a net gain of a little more than 100 people over the entire projection period. The population will continue to age and by 2036 there are projected to be almost 6.5 dependents for every 10 people of working age. Most of the dependents will be aged 65 and older, in contrast to current figures, which indicate that the bulk of dependents in the region are children.

**15 Selected Demographic Characteristics**

Year	Population by age group, Thousands of persons							Households (,000)	Dependency Ratios			Year
	0-4	5-17	18-24	25-44	45-64	65+	All Ages		Child	Elderly	Total	
1976	0.2	0.4	0.2	0.6	0.2	0.0	1.7	0.5	0.608	0.027	0.635	1976
1981	0.2	0.5	0.3	0.8	0.3	0.0	2.1	0.6	0.539	0.023	0.562	1981
1986	0.2	0.5	0.2	0.9	0.3	0.0	2.2	0.8	0.550	0.034	0.584	1986
1991	0.2	0.5	0.2	0.9	0.4	0.1	2.2	0.8	0.449	0.048	0.497	1991
1996	0.1	0.3	0.2	0.5	0.4	0.1	1.4	0.6	0.399	0.065	0.464	1996
2001	0.1	0.3	0.1	0.4	0.4	0.1	1.4	0.5	0.389	0.116	0.505	2001
2006	0.1	0.2	0.1	0.3	0.4	0.1	1.1	0.5	0.349	0.138	0.487	2006
2011	0.0	0.2	0.1	0.4	0.4	0.2	1.3	0.6	0.315	0.238	0.552	2011
2016	0.0	0.2	0.1	0.4	0.4	0.3	1.4	0.6	0.276	0.313	0.589	2016
2021	0.0	0.1	0.1	0.3	0.4	0.3	1.4	0.7	0.206	0.378	0.584	2021
2026	0.0	0.1	0.1	0.3	0.4	0.4	1.4	0.7	0.159	0.410	0.569	2026
2031	0.0	0.1	0.1	0.3	0.4	0.4	1.3	0.6	0.150	0.446	0.596	2031
2036	0.0	0.1	0.0	0.3	0.4	0.3	1.2	0.5	0.140	0.463	0.603	2036



Source: Population data are Projection P-34, run in Summer 2009. Figures are adjusted for Census undercount and are for July 1st of stated year.  
Note: Demographics and Projection notes in Tables 13 and 14 are from Projection P-33, run the Summer 2008.