



**Northern Rockies
Regional District**

1	General Economy
<p>Municipalities in Regional District: Fort Nelson</p> <p>This region is located in the north east corner of the province, to the east of the Rocky Mountains. This area has a wealth of natural resources including forests, and oil and gas. Most of the regions economic opportunities lie in resource extraction. Its main economic activities include oil and gas and forestry. Vast forests offer continued growth potential for the forest industry in the region. Fort Nelson has several lumber mills, some of which have announced closures or output reductions. However, they face a sustained supply of timber for the future as the Fort Nelson Timber Supply Area had its Annual Allowable Cut increased in 2006 and has a healthy long run forecast. Oil and gas remains an important growth industry in the area. Road upgrades are planned in support of expanding oil and gas activity. One of North America's largest gas processing plants, Duke Energy, is located in Fort Nelson. The area has a growing tourism industry.</p>	

The notes above and later in this report on Demographics and Projections are the basis for BC Stats population projection P33 completed in the Summer of 2008. The projections are updated annually to reflect known demographic shifts and economic conditions. Full projections with "Components of Change", "Special Age Groups", "5 Year Age Cohorts by Sex", and accompanying notes are available for B.C., the 8 development regions, the 28 regional districts, the 79 local health areas (LHAs) and a number of "special areas" of local interest which are not part of a province-wide geocoding system. Individual areas, including age and sex detail, are modestly priced. Users requiring only total population projections are able to self serve for free from our population projection page: www.bcstats.gov.bc.ca/data/pop/pop/popproj.asp The full B.C. level projection is available free on the above page.

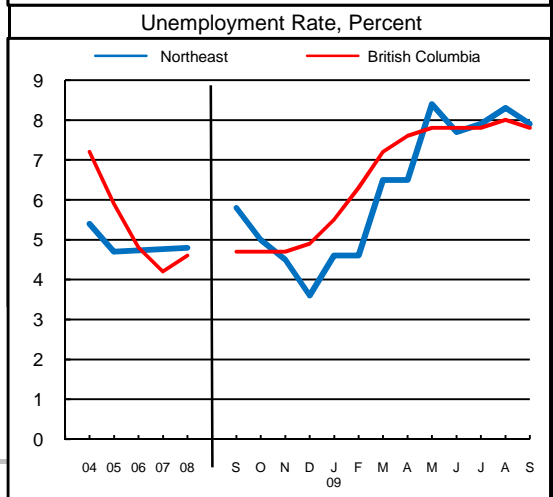
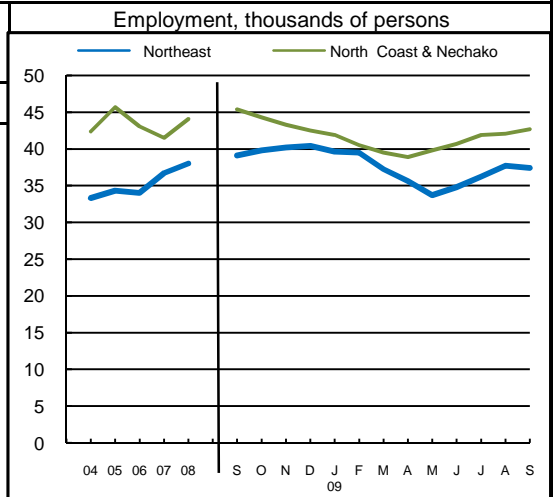
2	Economic Structure - Number of Business Locations, by Sector, by Employment Size, December 2008									
NAICS Code	Industry Sector based on NAICS Canada (North American Industrial Classification System)	Locations With No Employees	Peace River-Liard						British Columbia	
			Firms with Employees						With Employees	
			Less Than 20	20 to 49	50 to 199	200 Plus	All Sizes with Emp.	Percent of Total	Percent of Total	All Sizes
11	Total, All Industries	10	9	2	0	0	11	100.0%	100.0%	175,003
	Agric., Forestry, Fishing & Hunt	-	0	2	0	0	0	0.0%	4.0%	7,009
21	Mining & Oil & Gas Extract.	-	0	1	0	0	1	9.1%	0.6%	1,071
22	Utilities	-	0	0	0	0	0	0.0%	0.1%	203
23	Construction	1	1	0	0	0	1	9.1%	12.1%	21,108
31	Manufacturing (31-33)	-	0	0	0	0	0	0.0%	4.5%	7,879
41	Wholesale Trade	-	0	0	0	0	0	0.0%	5.9%	10,359
44	Retail Trade (44-45)	1	2	0	0	0	2	18.2%	11.9%	20,742
48	Transp. & Warehousing (48-49)	3	2	0	0	0	2	18.2%	4.4%	7,734
51	Information & Cultural Indust.	-	0	0	0	0	0	0.0%	1.4%	2,412
52	Finance & Insurance	-	0	0	0	0	0	0.0%	3.8%	6,564
53	Real Estate & Rental & Leasing	-	0	0	0	0	0	0.0%	4.5%	7,835
54	Profes'nl, Scientif. & Tech. Srv	1	0	0	0	0	0	0.0%	11.0%	19,278
55	Mgmt. of Companies & Enter.	1	0	0	0	0	0	0.0%	1.6%	2,818
56	Admin. & Sup'rt, Waste Mgmt.	1	0	0	0	0	0	0.0%	4.9%	8,513
61	Educational Services	-	0	0	0	0	0	0.0%	1.4%	2,363
62	Health Care & Social Assistance	-	0	0	0	0	0	0.0%	8.4%	14,773
71	Arts, Entertainment & Recreation	1	1	0	0	0	1	9.1%	1.6%	2,873
72	Accom. & Food Services	1	3	1	0	0	4	36.4%	6.7%	11,639
81	Other Serv's (ex. Public Admin.)	-	0	0	0	0	0	0.0%	10.9%	19,095
91	Public Administration	-	0	0	0	0	0	0.0%	0.4%	735

Source: Statistics Canada, Business Register Division. Note: This table formerly identified **business establishments**.



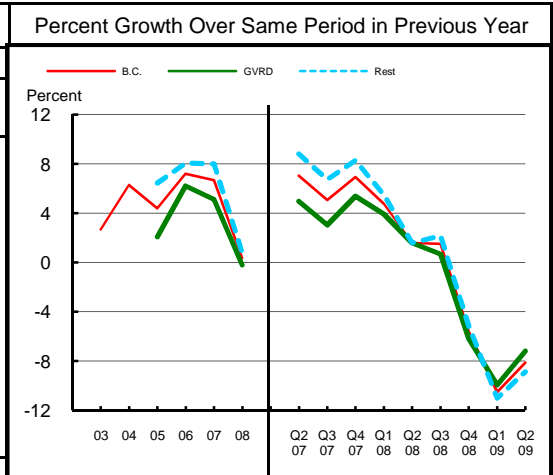
Northern Rockies
Regional District

3		Employment and Unemployment Rate, monthly data are 3-month moving average, actual, ending in stated month					
	Northeast		North Coast & Nechako		British Columbia		
	Emp. ('000)	Unemp. %	Emp. ('000)	Unemp. %	Emp. ('000)	Unemp. %	
1999	30.7	8.9	46.7	8.8	1,894.4	8.3	
2000	31.8	5.9	47.3	10.2	1,931.3	7.1	
2001	32.5	6.1	46.6	11.2	1,921.6	7.7	
2002	33.2	9.0	44.9	12.6	1,965.0	8.5	
2003	34.9	6.4	44.8	11.3	2,014.7	8.0	
2004	33.3	5.4	42.4	11.6	2,062.7	7.2	
2005	34.3	4.7	45.7	8.1	2,130.5	5.9	
2006	34.0	NA	43.1	6.7	2,195.5	4.8	
2007	36.7	NA	41.5	8.0	2,266.3	4.2	
2008	38.0	4.8	44.1	7.7	2,314.3	4.6	
2008 Jan	36.5	NA	41.5	8.2	2,286.5	4.1	
2008 Feb	35.8	NA	42.1	7.3	2,278.9	4.2	
2008 Mar	35.6	NA	43.3	7.1	2,284.9	4.4	
2008 Apr	35.8	4.3	44.3	7.9	2,295.0	4.4	
2008 May	35.8	5.0	44.4	8.6	2,313.3	4.5	
2008 Jun	37.0	5.9	45.4	8.5	2,329.8	4.4	
2008 Jul	37.9	6.2	45.8	7.5	2,345.0	4.5	
2008 Aug	38.6	6.3	46.5	7.6	2,350.7	4.6	
2008 Sep	39.1	5.8	45.4	6.8	2,337.7	4.7	
2008 Oct	39.8	5.0	44.3	7.7	2,325.3	4.7	
2008 Nov	40.2	4.5	43.3	7.7	2,312.5	4.7	
2008 Dec	40.4	3.6	42.5	8.6	2,304.8	4.9	
2009 Jan	39.6	4.6	41.9	9.3	2,278.4	5.5	
2009 Feb	39.5	4.6	40.5	9.8	2,251.1	6.3	
2009 Mar	37.2	6.5	39.5	11.1	2,227.5	7.2	
2009 Apr	35.6	6.5	38.9	10.6	2,229.0	7.6	
2009 May	33.7	8.4	39.8	10.6	2,243.1	7.8	
2009 Jun	34.8	7.7	40.7	10.0	2,264.6	7.8	
2009 Jul	36.2	7.9	41.9	10.5	2,275.9	7.8	
2009 Aug	37.7	8.3	42.1	11.0	2,280.5	8.0	
2009 Sep	37.4	7.9	42.7	10.1	2,275.8	7.8	
2009 Oct							
2009 Nov							
2009 Dec							
Average:							
ytd average	Jan-Sep08	37.2	NA	44.7	7.4	2,317.5	4.5
based on	Jan-Sep09	36.7	7.4	40.9	10.4	2,256.0	7.6
actual data	% Change	-1.5		-8.4		-2.7	



Source: Labour Force Survey, Statistics Canada. Sub-provincial regions are development regions or census metropolitan areas.

4		Retail Sales - based on Statistics Canada monthly survey						Percent Growth Over Same Period in Previous Year	
Year or Year/Quarter	\$ millions of retail sales			Percent change on year ago			B.C.	Greater Vancouver	Rest of Province
	B.C.	Greater Vancouver	Rest of Province	B.C.	Greater Vancouver	Rest of Province			
2004	47,216.6	22,243.6	24,973.0	6.3	n/a	n/a			
2005	49,286.3	22,702.6	26,583.7	4.4	2.1	6.4			
Annual data 2006	52,837.1	24,110.2	28,726.9	7.2	6.2	8.1			
2007	56,365.4	25,342.8	31,022.6	6.7	5.1	8.0			
2008	56,562.4	25,290.5	31,271.8	0.3	-0.2	0.8			
Quarterly data 08 2	14,749.1	6,626.3	8,122.8	1.6	1.6	1.6			
08 3	14,923.3	6,466.4	8,456.9	1.5	0.7	2.2			
08 4	14,053.2	6,340.4	7,712.7	-5.6	-6.2	-5.2			
09 1	11,485.1	5,274.5	6,210.5	-10.5	-10.0	-11.0			
09 2	13,550.1	6,150.0	7,400.1	-8.1	-7.2	-8.9			



Source: B.C. & GVRD data - Statistics Canada, monthly survey (CANSIM 080-0015).



Northern Rockies
Regional District

Was 5 **Manufacturing Principal Statistics - Search at www.made-in-bc.ca for local firms, products and more**

This table is discontinued. Sub-provincial manufacturing principal statistics are no longer being produced.

5		Tourism Room Revenue - Includes Peace River R.D. (\$ Thousands)					Tourism Room Revenue Index 2003=100	
Year	Total/YTD	Q1	Q2	Q3	Q4	Index		
						B.C.	Region	
Northern Rockies Regional District	2005	63,400.4	22,473.6	10,778.7	14,330.4	15,817.7		
	2006	74,099.4	20,003.6	16,433.1	20,917.6	16,745.1		
	2007	68,632.8	19,536.8	14,632.6	18,762.5	15,700.8		
	2008	77,237.0	19,065.9	17,003.4	21,236.4	19,931.3		
	2009	33,407.8	19,406.0	14,001.8				
British Columbia	2005	1,681,563.6	351,779.6	404,639.8	610,273.7	314,870.6		
	2006	1,807,608.7	366,165.1	450,747.7	652,476.4	338,219.5		
	2007	1,963,958.7	412,949.3	488,493.9	697,545.2	364,970.3		
	2008	1,977,424.9	435,223.9	503,276.7	687,708.3	351,215.9		
	2009	802,329.6	378,880.1	423,449.6				
2008 Room Revenue by Accommodation Type (\$Thousands %Share)								
TOTAL	77,237.0	100.0%						
Hotels	52,454.0	67.9%						
1-75 Rooms	13,572.0	17.6%						
Motels	14,374.0	18.6%						
*City of Dawson Creek	15,180.0	19.7%						
*City of Fort St. John	21,589.0	28.0%						
asterisk before location denotes sub-area detail								

All room revenue data has been revised. For an explanation, see our periodical called *Tourism Sector Monitor*, April and May issues of 2009.
Link to explanation of changes: http://www.bcstats.gov.bc.ca/pubs/pr_tour.asp

6		Building Permits					Total Permits Index 2003=100	
Year	Total Building Permits	Non Residential			Residential	Index		
		Total Non Res.	Industrial	Commercial		Institutional & Gov't	B.C.	Region
<-- \$ Millions -->							Units	
2001	0.0	0.0	0.0	0.0	0.0	0		
2002	0.0	0.0	0.0	0.0	0.0	0		
2003	0.0	0.0	0.0	0.0	0.0	0		
2004	0.0	0.0	0.0	0.0	0.0	0		
2005	0.0	0.0	0.0	0.0	0.0	0		
2006	0.0	0.0	0.0	0.0	0.0	0		
2007	0.0	0.0	0.0	0.0	0.0	0		
2008	10.8	8.3	0.3	8.0	0.0	10		
Jan-Aug 08	10.8	8.3	0.3	8.0	0.0	10		
Jan-Aug 09	49.0	47.8	1.0	46.7	0.1	4		

Not all projects require a building permit, and not all municipalities & regions report. Latest month preliminary, previous month is revised.
Source: Statistics Canada (data collected from municipal and Regional District offices).

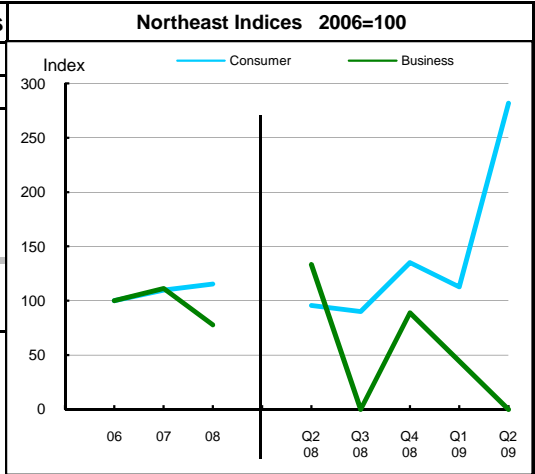


Northern Rockies
Regional District

7 Business and Consumer Bankruptcies, Quarterly - NEW series						
Year	Northeast		British Columbia		Consumer	Business
	Consumer	Business	Consumer	Business		
2006	71	9	7,020	585		
2007	78	10	6,651	470		
2008	82	7	7,293	454		
2009						
2010						
YTD-08	42	5	3,335	202		
YTD-09	70	1	5,400	232		

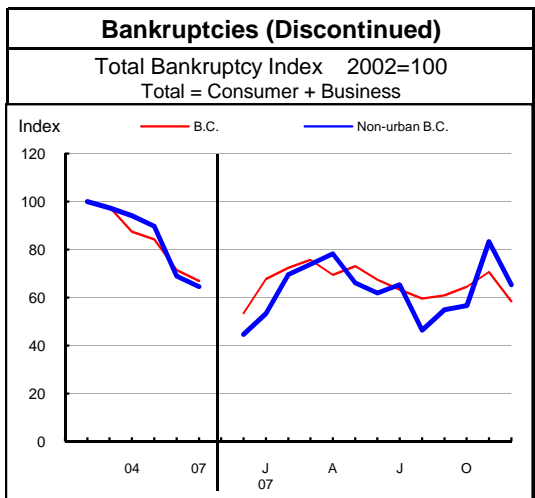
Source: Office of the Superintendent of Bankruptcy, Government of Canada
Total bankruptcy index includes business and consumer bankruptcies.

Note: Bankruptcy is not a good measure of business failure. Most firms that fail wind down operations and withdraw from business.



8 Incorporations			
Year	Incorporations	Incorporations Index 2003=100	
		Index 300	Index
2001	5		
2002	15		
2003	21		
2004	29		
2005	31		
2006	53		
2007	34		
2008	35		
Jan-Sep 08	27		
Jan-Sep 09	10		

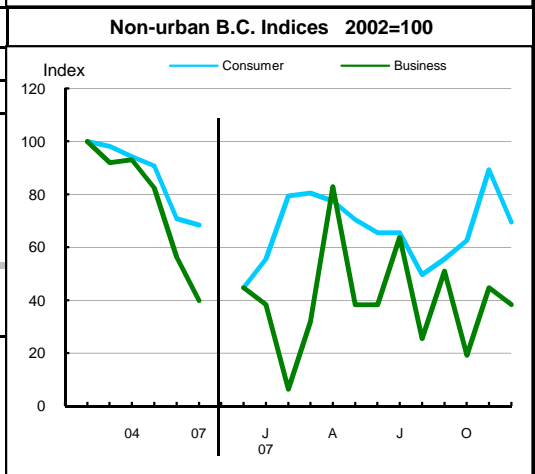
Source: Incorporations - (B.C.) Ministry of Finance



9 Business and Consumer Bankruptcies (Discontinued)						
Year	Non-urban B.C.		Fort St. John		B.C.	
	Consumer	Business	Consumer	Business	Consumer	Business
2003	1,186	173	92	13	9,385	1,002
2004	1,139	175	80	14	8,378	922
2005	1,097	155	72	9	8,173	786
2006	856	106	56	7	7,021	587
2007	827	75	57	7	6,651	470
Jan-Dec 06	856	106	56	7	7,022	587
Jan-Dec 07	827	75	57	7	6,651	470

Source: Office of the Superintendent of Bankruptcy, Government of Canada
Total bankruptcy index includes business and consumer bankruptcies.

Note: Bankruptcy is not a good measure of business failure. Most firms that fail wind down operations and withdraw from business.





Northern Rockies
Regional District

Dependence on the Safety Net

10 Basic Income Assistance (Basic Income Assistance Recipients in Subject Group as a percent of Reference Group)						11 Employment Insurance (was UI) (EI beneficiaries as a percent of Reference Group)					
Subject Group (receiving benefits)		All (0-64)	Children <19 yrs in Families	Young Adults (19-24)	'Mid' Group (25-54)	Single Parent Women	Working Age (19-64)	Young Adults (19-24)	'Mid' Group (25-54)	'Older' Workers (55-64)	Note Older Data
Reference Group		Total Pop. 0-64	Total Pop. <19	Total Pop. 19-24	Total Pop. 25-54	Tot. Female 19-64	Total Pop. 19-64	Total Pop. 19-24	Total Pop. 25-54	Total Pop. 55-64	
Ft. Nelson-Liard Regional District	Sep '07	0.7	1.0	-	0.6	-	1.7	2.0	1.7	1.7	Mar '07
	Dec '07	0.7	1.0	-	0.4	-	2.7	2.7	2.4	4.1	Jun '07
	Mar '08	0.7	1.1	-	0.4	-	2.3	2.7	2.2	2.6	Sep '07
	Jun '08	0.8	1.3	1.7	-	-	1.9	-	1.8	-	Dec '07
	Sep '08	1.0	1.8	0.9	-	-	1.7	-	1.7	-	Mar '08
	Dec '08	0.9	1.6	1.5	-	0.9	4.9	4.6	4.4	7.9	Jun '08
	Mar '09	1.0	1.6	1.1	-	0.9	2.6	2.7	2.3	4.4	Sep '08
	Jun '09	0.7	1.0	-	0.6	0.6	4.2	2.8	4.4	4.4	Dec '08
	Sep '09	1.2	1.9	-	-	1.0	5.1	3.7	5.1	6.3	Mar '09
Duration of Dependence on Income Assistance (As of September 2009)		All* Income Assistance Recipients as % of Total Pop 0-64: Region Compared to B.C.				EI Beneficiaries Aged 19-64 as % of Working Age Population					
Region		Percent				Percent					
B.C.		Region				B.C.					
Total Number of Recipients	69	72,592									
Percent Distribution by Duration											
<1 Year	82.6	65.3									
1-2 Years	8.7	18.2									
>2 Years	8.7	16.4									
Source: Ministry of Children and Family Development administrative files and BC Stats population estimates. These figures include only a subset of those receiving income assistance. Excluded are those on Continuous Assistance (disabled or with persistent multiple barriers to employment, children in the home of a relative, and OAS/seniors. A recipient is defined as 'each person living in a family or living alone that is receiving basic income assistance'. Data does not include Aboriginal people living on Reserve. Note: '-' Data too small to release.						Source: Ministry of Housing and Social Development and BC Stats population estimates.					
12 Dependence on Basic Income Assistance and/or Employment Insurance (Basic Income Assistance Recipients + Employment Insurance Recipients in Subject Group as a percent of Reference Group)											
Subject Group (receiving assistance)		All (19-64)	Young Adults (19-24)	'Mid' Group (25-54)	'Older' Group (55-64)	All 'Safety Net' Recipients as % of Total Pop 19-64: Region Compared to B.C.					
Reference Group		Total Pop. 19-64	Total Pop. 19-24	Total Pop. 25-54	Total Pop. 55-64	Percent					
Ft. Nelson-Liard Regional District	Mar '07	-	-	-	-						
	Jun '07	3.0	-	2.7	-						
	Sep '07	2.7	-	2.6	-						
	Dec '07	2.3	-	2.2	-						
	Mar '08	2.2	-	2.1	-						
	Jun '08	5.4	5.9	-	-						
	Sep '08	3.2	3.6	-	-						
	Dec '08	4.8	4.3	-	-						
	Mar '09	5.7	4.9	-	-						

Note: The EI figures reported above no longer include persons claiming parental/adoption leave. Previous issues of this table did include them.



**Northern Rockies
Regional District**

13 Demographics

The Northern Rockies has experienced periods of strong growth, especially in the early to mid 1990s, as well as periods of net loss of population. The population has aged over the last two decades, but at a slower rate than the province as a whole. It added over six years to its median age since 1986, compared with a provincial gain of 7.2 years. Despite this ageing, Northern Rockies remains very young, with a median age almost 8.5 years younger than the provincial median in 2007. Fertility is quite variable, but overall has been extremely high relative to the province. Consistent with a young population with high fertility, the population of children aged 17 and under contributes the most to overall dependency, while elderly dependency ratios are very low. The remoteness of the area tends to make it less attractive to seniors. The sex ratio is heavily weighted in favour of males, likely due to economic dependence on the resource sectors. Births continue to outnumber deaths by a substantial margin, resulting in positive natural increase. Recent growth in the region is due both to net migration or natural increase.

14 Projection

Net migration to this region is forecast to remain negative through the first half of the projection period although the flow is expected to become positive over time. Natural increase (births minus deaths) will gradually drop over the projection period, but will offset the most of the initial out-migration. Therefore, slow growth will persist over much of the period, accelerating towards the end of the projection. Population ageing is expected to continue and, by 2036, there will likely be over 6 dependents for every 10 people of working age, compared to a ratio of about 4:10 in 2007.

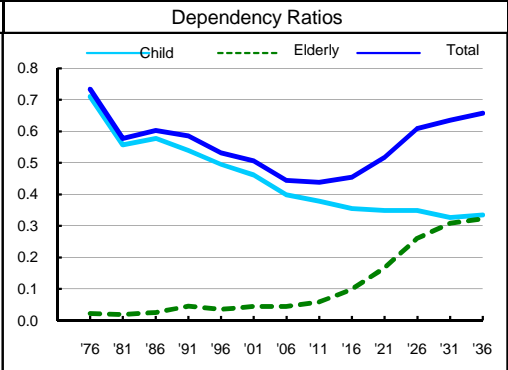
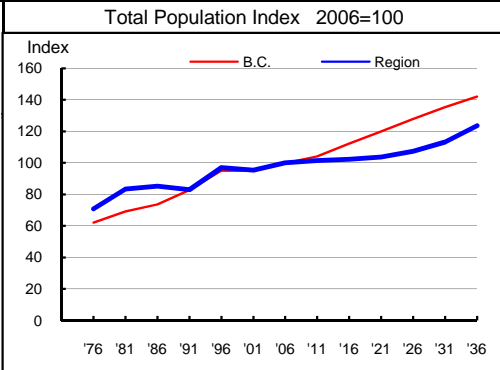
15 Selected Demographic Characteristics

Year	Population by age group, Thousands of persons							House-holds (,000)	Dependency Ratios			Year
	0-4	5-17	18-24	25-44	45-64	65+	All Ages		Child	Elderly	Total	
1976	0.5	1.3	0.7	1.4	0.5	0.1	4.5	1.2	0.711	0.023	0.734	1976
1981	0.6	1.3	1.0	1.8	0.6	0.1	5.3	1.6	0.558	0.020	0.578	1981
1986	0.7	1.2	0.7	2.0	0.7	0.1	5.4	1.7	0.577	0.026	0.603	1986
1991	0.5	1.2	0.6	2.0	0.7	0.2	5.2	1.7	0.539	0.046	0.585	1991
1996	0.6	1.4	0.7	2.5	0.8	0.1	6.1	2.0	0.496	0.036	0.532	1996
2001	0.5	1.4	0.7	2.2	1.1	0.2	6.0	1.9	0.461	0.045	0.507	2001
2006	0.5	1.2	0.7	2.2	1.4	0.2	6.3	2.4	0.398	0.045	0.444	2006
2011	0.5	1.2	0.6	2.1	1.7	0.3	6.4	2.5	0.378	0.060	0.438	2011
2016	0.4	1.1	0.6	1.9	1.9	0.4	6.4	2.6	0.355	0.100	0.455	2016
2021	0.4	1.1	0.5	1.9	1.9	0.7	6.5	2.7	0.349	0.168	0.517	2021
2026	0.4	1.1	0.6	1.8	1.9	1.1	6.8	2.9	0.349	0.261	0.609	2026
2031	0.4	1.0	0.6	1.9	1.8	1.3	7.1	3.1	0.327	0.309	0.636	2031
2036	0.5	1.1	0.6	2.1	2.0	1.5	7.8	3.4	0.335	0.323	0.658	2036

Age groups reflect pre-school, school, advanced education, family formation, mature workers and retired.

Child Dependency:
(ages 0-17) / (ages 18-64)

Elderly Dependency:
(ages 65+) / (ages 18-64)



Source: Population data are Projection P-34, run in Summer 2009. Figures are adjusted for Census undercount and are for July 1st of stated year.
Note: Demographics and Projection notes in Tables 13 and 14 are from Projection P-33, run the Summer 2008.