

- **Manufacturers less optimistic about first quarter business conditions**
- **BC home to one in six of the nation's biotechnology firms**
- **University participation rate rises following creation of new schools in BC communities**

The Economy

- **BC manufacturers surveyed in January were much less optimistic about business conditions than they had been a year earlier** At the beginning of 2006, the balance of opinion on production prospects was +23, with 34% (*seasonally adjusted*) anticipating increases and just 11% expecting to see declines. Last month, the balance of opinion was +4, as 22% of manufacturers anticipated an increase in production, and 18% forecast a decline.

Manufacturers were also less positive about the prospects for new orders and inventory levels. In January, 21% expected to see new orders decline in the first quarter, while 18% anticipated an increase. Eighteen percent thought the backlog of unfilled orders would be lower than normal, double the number who expected bigger backlogs. Similarly, 20% thought the inventory of finished product would be too high, while just 5% said it would be too low. However, employment levels look promising for the first quarter of the year, with 68% of the province's manufacturers saying that employment levels will be unchanged, 21% expecting job prospects to improve, and only 11% anticipating job losses.

More Canadian manufacturers anticipated a decline (23%) rather than an increase (18%) in production during the first quarter of 2007. Twenty percent thought inventory levels would be too high, and 23% expected that orders would diminish. Job losses (19%) were thought to be more likely than job gains (15%), although most manufacturers (66%) did not anticipate much change in employment prospects. Labour shortages in the West and increasing prices for raw materials are among the factors contributing to a 23% expectation of

production difficulties over the first quarter.

Data Source: Statistics Canada

- **Restaurant, caterer and tavern receipts in the province edged down (-0.8% *seasonally adjusted*) for the third consecutive month in November.** Food service establishments, which account for 90% of total receipts, saw revenues slip 0.4%, and receipts at drinking places continued to slump (-6.6%).

Nationally, sales edged up 0.9% as food service establishments continued to thrive (+1.2%), outweighing a 4.5% loss in receipts for drinking places.

Data Source: Statistics Canada & BC Stats

Biotechnology

- **BC was home to 93 of the nation's 532 innovative biotechnology firms in 2005.** Biotechnology firms are companies that use biotechnology for the purpose of developing new products or processes. Combined, BC's 93 companies generated revenues of \$586 million in 2005 and their spending on research and development (R&D) reached \$285 million. In the same year there were nearly 2,000 employees with biotechnology related responsibilities in the province. Together, Quebec (181 firms), Ontario (144 firms) and BC are home to 75% of the country's innovative biotechnology firms. In 2005, biotechnology related to human health remained by far the most significant biotechnology sector in the country.

Data Source: Statistics Canada

Education

- **The creation of a local university is associated with a significant increase in university attendance by youth in BC communities.** Young people who grew up in Prince George became much more likely to pursue a post-secondary education following the opening of the Univer-

Did you know...

59% of Canadian participants in a Groundhog Day poll predict that climate change will affect the critters' forecast for spring. *Source: The Weather Network*

sity of Northern British Columbia (UNBC) in 1994. Nineteen percent of youth (aged 15 to 19) living in Prince George in 1991 spent at least one of the next five years enrolled at university. Among those aged 15 to 19 in 1996, the participation rate jumped to 27%. Kelowna gained a university in 1989 and saw local participation rates rise from 23% for those aged 15 to 19 in 1986 to 31% in 1991. Kamloops, whose college received university status in 1989, saw the university participation rate among youth who grew up in the area surge from 21% to 36% between 1986 and 1991.

By comparison, Canadian communities that did not house a university saw their youth participation rate decline from 28% to 26% over the same period, while rates in cities that already had a local university inched up (from 35% to 36%). Among BC communities, students from lower-income families saw the largest increase in university participation, which is consistent with the notion that distance poses a financial barrier. *Data Source: SC Cat. # 11F0019MIE2006283*

Immigrants

- **New immigrants arriving in Canada are increasingly likely to be university educated, but the economic situation of recent immigrants has shown little, if any, improvement since the early 1990s.** Among immigrants aged 15 and older who entered the country in 1992, 17% had a university degree. By 2004, the proportion of new immigrants with degrees had reached 45% and many more were arriving in the skilled economic class (up from 29% in 1992 to 51% in 2004), while fewer immigrants were in the family class.

In 2004, low income rates among immigrants during their first year in Canada were more than three times higher than for Canadian-born people. Of immigrants who arrived in 2000, 16% remained in low income for at least five years. Among those experiencing such long-term low income, 41% had university degrees, compared to just 13% in 1993.

Data Source: Statistics Canada Cat. # 11F0019MIE2007294

The Nation

- **Canada's economy expanded 0.2% (seasonally adjusted) in November, posting the first monthly gain since August.** The goods and service sectors both grew at the same rate (+0.2%). In the goods sector, manufacturing (+1.6%) expanded for the first time since July, and agriculture, forestry, fishing & hunting rebounded (+0.8%) from a downturn in October. However, other goods industries did not fare as well. Construction posted a modest 0.2% increase, but mining, oil & gas extraction (-2.2%) and utilities (-2.0%) contracted in November.

Most service industries expanded in November, but it was a slow month for retailers (-0.2%) as well as wholesalers (-0.1%). Output in the education industry was unchanged from October, but all other service industries posted gains. The strongest growth was in accommodation & food services (+1.2%), where GDP expanded for the fourth month in a row.

The energy sector contracted 2.5%, and high-tech related industries in the information & communication technologies sector shrank 0.1%. *Data Source: Statistics Canada*

- **Canadian manufacturers' selling prices were 3.6% higher in December than in the same month of 2005.** The increase was mostly attributable to climbing prices for primary metal (+28.8%) products. Prices for pulp & paper (+6.2%), machinery & equipment (+0.9%) and petroleum & coal products (+0.7%) were also higher than in December of 2005.

BC producers of softwood lumber products received less (-5.3%) for their lumber than they had a year earlier. Prices for interior lumber (-7.4%) were significantly lower, outweighing a slight increase for coastal lumber (+0.6%). On the other hand, selling prices for BC pulpwood chips were up a significant 16.1% over December of 2005.

The cost of raw materials jumped 11.7% in December, due mostly to a whopping 78.8% hike in prices for non-ferrous metals. *Data Source: Statistics Canada*

*Infoline Issue: 07-05
February 2nd, 2007*

Contact: Sarah Harrower (250) 387-0334

Originally published in *Migration Highlights* Issue 06-3. Annual subscription \$30 +GST

Migration Patterns in Northern and Southern British Columbia

This Feature Article presents information on patterns of migration in Northern and Southern areas of B.C.. Areas of interest explored are the size of migrant populations within these areas, the age and sex characteristics of migrants, and their top destination and source areas. Northern areas for this Feature Article are defined as the northernmost Development Regions (DR) of British Columbia: Cariboo DR; North Coast DR; Nechako DR; and Northeast Development Region. Southern areas include: Vancouver Island/Coast DR; Mainland/Southwest DR; Thompson-Okanagan DR; and Kootenay DR. While these areas may also have a variety of migration patterns within their areas, this paper will discuss primarily the patterns of the Northern and Southern areas.

Importance of Intraprovincial and Interprovincial Migration

Migrants are an important component of population. However, the composition of this group in terms of their origin, age and sex characteristics may vary greatly. This section presents statistics on the relative importance of different migrant groups within the populations of the Northern and Southern Areas of B.C. at the time of the 2001 Canada Census. The Census allows for the most accurate account of the composition of a population at one given point in time. The 2001 Census is the most recent and available Census for Canada.

The 2001 Census gathered information on the mobility status of individuals aged five years and older, and one year and older. Information on the usual place of residence for individuals one year prior and five years prior

were gathered and compared with the location of their current residence location. Table 1 presents Total 2001 Census Population (Ages 5 years and older) and the Population (Aged 5 years and older) by mobility status.

Migrants are defined as those individuals that listed a 1996 usual place of residence in a different Census Sub-division (CSD) than their 2001 residence. This group includes both external migrants (movers from outside of Canada) and internal migrants (movers from outside their 2001 CSD but from within Canada). For B.C., 842,600 individuals, or 23.0 per cent of the total population aged 5 and up at the time of the 2001 Census, were classified as migrants. Canada's average, over this same period, was 19.5 per cent. Internal migrants who had moved within the previous five years accounted for 17.6 per cent of the total population aged 5 and up, a rate above the National average of 16.0 per cent.

Comparing the populations of northern and southern B.C., a higher proportion of migrants were found in the southern area of the province. A total of 788,615 individuals, or 23.5 per cent of the population 5 years and older, had migrated there during the previous five year period. Of these migrants, 593,410 individuals, or 75.4 per cent of total migrants, arrived from areas internal to Canada. The population in the northern area held a lower proportion of migrants than the Canadian average. In total, 54,000 migrants or 17.0 per cent of the north's total over 5 population had moved to this area over the previous 5 years. Of these migrants, 95 per cent had arrived from areas internal to Canada.

Table 1: Five Year - Mobility Status of Population Aged 5 and Up at 2001 Census, (Mobility Status Population as a Per Cent of Total 2001 Census Population Aged 5 and Up)

Region	Total 2001 Census Population (5ys+)	Internal Migrants					
		Migrants	Internal Migrants	Inter- Provincial Migrants	Intra- Provincial Migrants	<i>Intra- Regional District Migrants</i>	<i>Inter- Regional District Migrants</i>
Canada	27,932,590	5,458,735 (19.5 %)	4,482,775 (16.0 %)	905,665 (3.2 %)	3,577,105 (12.8 %)		
British Columbia	3,661,940	842,600 (23.0 %)	644,935 (17.6 %)	151,720 (4.1 %)	493,215 (13.5 %)		
North	303,330	54,000 (17.8 %)	51,530 (17.0 %)	10,925 (3.6 %)	40,600 (13.4 %)	31,450 (3.0 %)	9,150 (10.4 %)
South	3,358,600	788,615 (23.5 %)	593,410 (17.7 %)	140,785 (4.2 %)	452,620 (13.5 %)	226,555 (6.7 %)	226,065 (6.7 %)

Source: Statistics Canada 2001 Census, Numbers may not sum due to rounding.

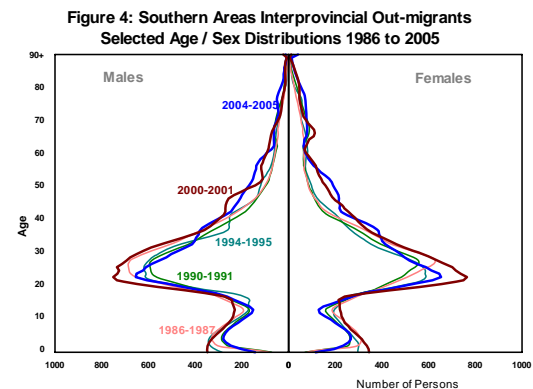
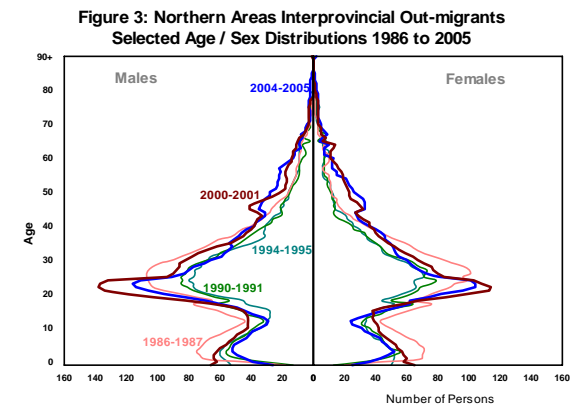
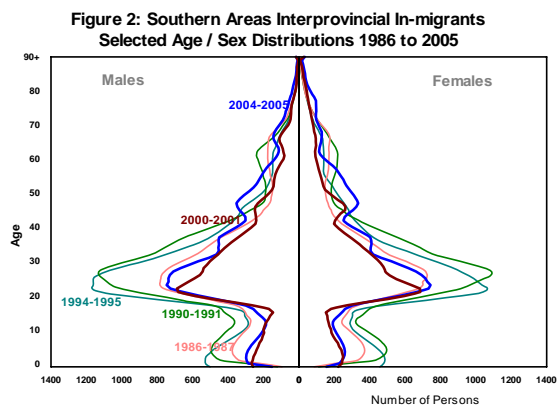
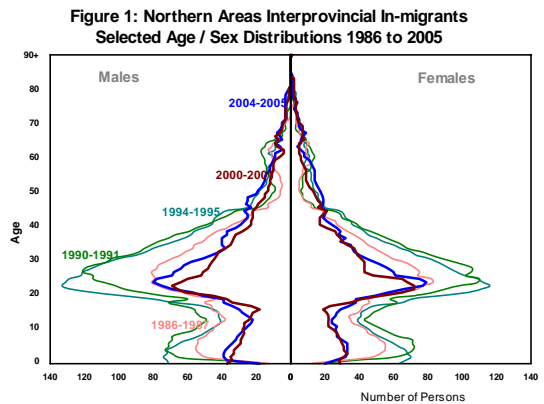
Internal migrants aged 5 years and older have comparable shares of the total population in the northern and southern areas. Intraprovincial migrants are those migrants that moved between CSDs but remained within the province. Interprovincial migrants account for a larger percentage of the internal migrant population than interprovincial migrants for both areas. However, the intraprovincial migrant populations of the two areas exhibit different characteristics.

The northern area has a higher proportion of inter-Regional District migrants, or migrants that moved from another Regional District, in its population. However, the southern area has equal proportions of migrants in their population that moved between CSDs within the same Regional District, and that moved from another Regional District to their current residence.

Age and Sex Characteristics of Interprovincial Migrants

Persons aged 20 to 40 years old account for the majority of interprovincial in-migrants. During the early 1990s, this characteristic of the age and sex distributions became more pronounced as the number of in-migrants in this age group increased dramatically. The higher inflow into the northern area was weighted more towards men, and men of an older age group, than the inflow to the southern area. Since the early 1990s, inflows of older men have decreased by approximately a third.

The age and sex distributions of interprovincial out-migrants are more strongly centred around the ages of 20 to 30 years than the distributions of interprovincial in-migrants. For the northern area, males between these ages account for a slightly larger share of total out-migration than females. In recent periods the number of individuals aged 20 to 24 who moved out of both areas has increased.



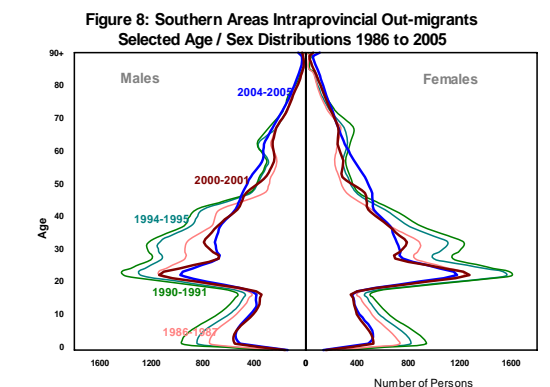
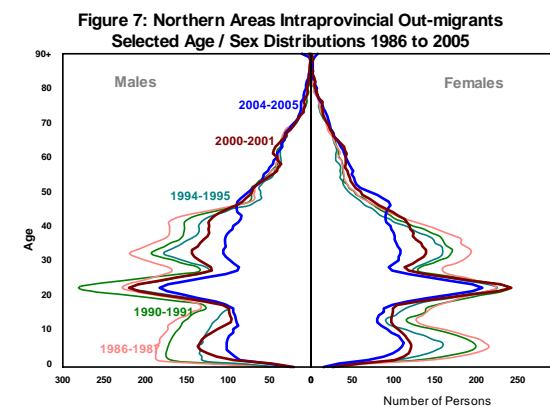
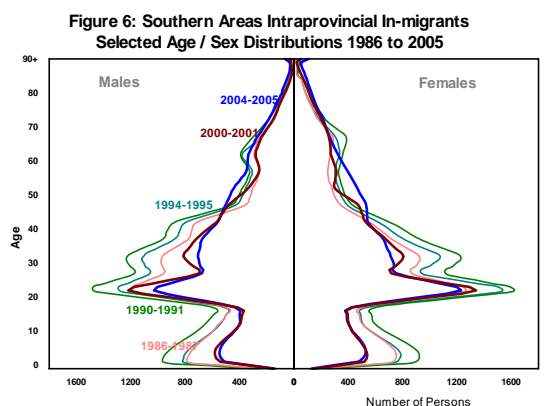
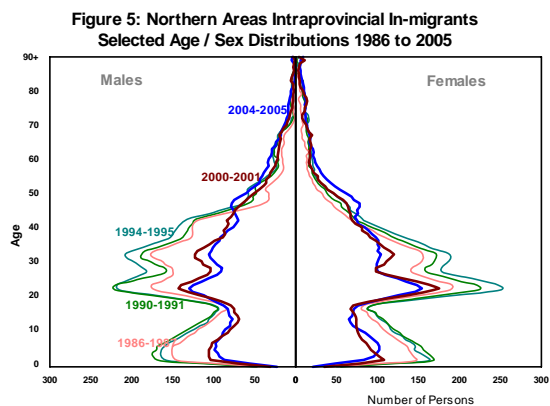
Data Source: Statistics Canada Age and Sex Annual Demographic Statistics.

Age and Sex Characteristics of Intraprovincial Migrants

Intraprovincial migration is defined here as the movement of individuals between Regional Districts within B.C. For example, a northern intraprovincial out-migration distribution represents the age and sex of individuals who moved out of any of the northern RD, regardless of their destination.

The age and sex distributions of intraprovincial migrants show pronounced migration patterns for individuals aged 20 to 24 years. In all years, movements within this age group are larger than for all others. The distributions for intraprovincial in-migrants to northern areas between the years of 1990 to 1994 were more heavily weighted towards men aged 20 to 40 years. In recent years however, female in-migrants have outnumbered males in this age group. Finally, a lower proportion of total in-migrants in the northern area can be attributed to individuals aged 65 and over than in southern areas.

The age and sex distributions of intraprovincial out-migrants for the northern area are also heavily weighted towards individuals under 45 years of age. This characteristic is less pronounced for the distributions of southern areas. In the south, there has been a decline in the number of out-migrants under 45 years



Data Source: Statistics Canada Age and Sex Annual Demographic Statistics.

Geographic Characteristics of B.C. Migration Patterns

Using the Annual Demographic Statistics of Statistics Canada, Figures 9 and 10 present the long term trends in inter- and intra-provincial migration. Interprovincial in- and out-migration for the northern and southern areas show a similar trend between 1986 and 2005. For both these areas, the highest level of in-migration occurred before the late 1990s. However, since the late 1990s in-migration to the north dropped by one-third while out-migration has increased. This has resulted in negative net interprovincial migration.

For the southern area in-migration decreased after 1997 while out-migration increased. Recently, in-migration has rebounded in the south, allowing for positive net interprovincial migration since 2002-2003.

Figure 9: Northern Area Interprovincial Migration 1986 - 2005

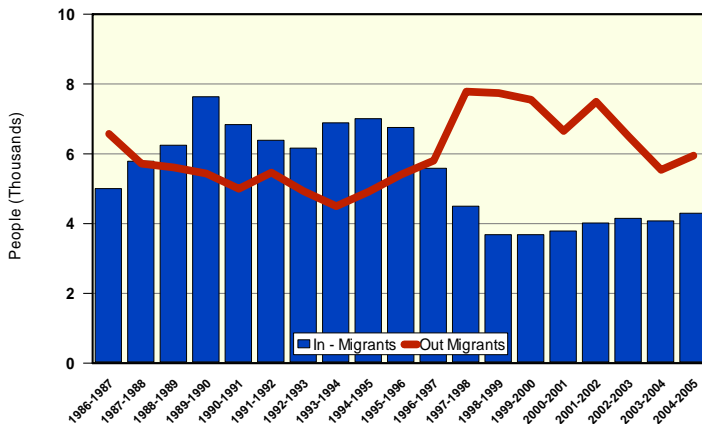
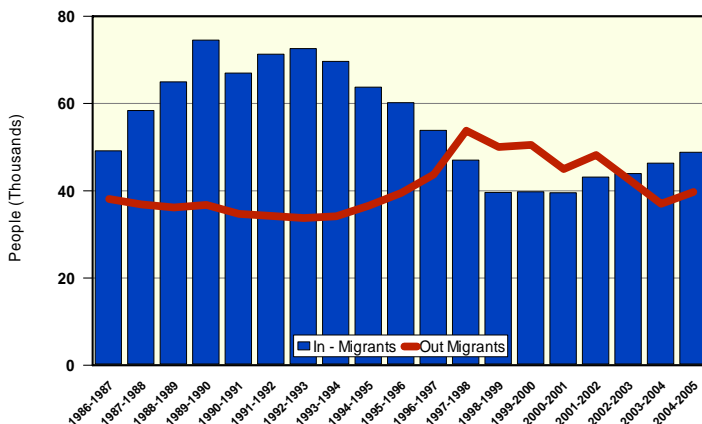


Figure 10: Southern Area Interprovincial Migration 1986 - 2005

Data Source : Statistics Canada Demography Division, Annual Demographic Statistics



Data Source : Statistics Canada Demography Division, Annual Demographic Statistics

The 2001 Census provides information on the direction of migration flows within Canada. The following presents information on the destinations and origins of in- and out-migrants from areas within B.C. between 1996 and 2001.

Geographic Characteristics of Interprovincial Migration

The destinations of inter-provincial out-migrants of the northern and southern areas of B.C. are quite different. Eight of the top ten most popular destinations for out-migrants from northern B.C., who left between 1996 and 2001, were within Alberta. Calgary and Edmonton received the highest number of interprovincial out-migrants from this area over this period. Calgary and Edmonton were also the most popular destinations for out-migrants from B.C.'s southern areas. However urban centres in other provinces held six of the other top eight destination spots.

Most individuals who moved from other provinces into the northern area of B.C. between 1996 and 2001, arrived from areas within Alberta, Yukon, and Northwest Territories. Calgary and Edmonton were the top two sending areas for individuals migrating to areas in southern B.C.. The other important sending areas for the south were the main urban centres in Eastern Canada.

Figure 11: Northern Areas Interprovincial Out-Migrants
Top 10 Census Divisions Moved to
Between 1996 and 2001

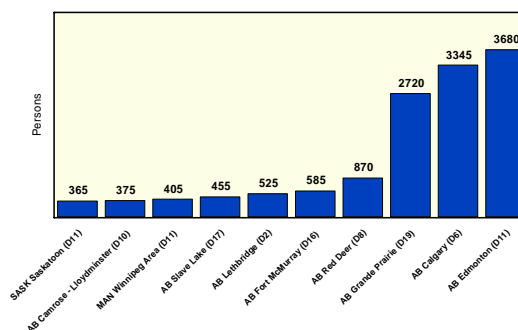


Figure 12: Southern Areas Interprovincial Out-Migrants
Top 10 Census Divisions Moved to
Between 1996 and 2001

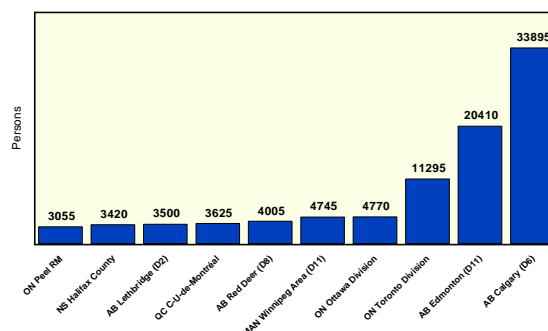


Figure 13: Northern Areas Interprovincial In-Migrants
Top 10 Census Divisions Moved From
Between 1996 and 2001

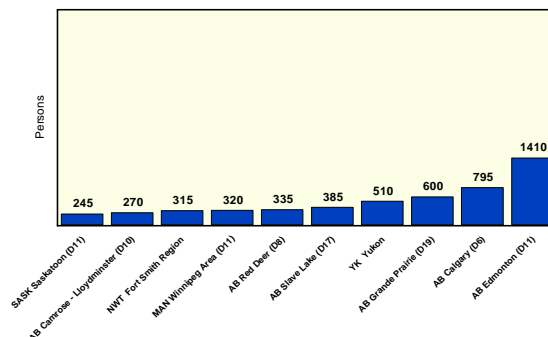
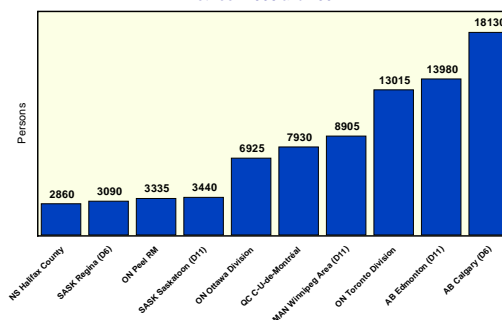


Figure 14: Southern Areas Interprovincial In-Migrants
Top 10 Census Divisions Moved From
Between 1996 and 2001



Data Source: Statistics Canada 2001 Census

Geographic Characteristics of Intraprovincial Migration

There was a sizable intraprovincial migration flow between the northern and southern areas of B.C between 1996 and 2001. Over this period 30,830 individuals (who were five years and older in 2001) left the northern area for areas in the south. A total of 19,195 individuals also left the southern area for the north over the same period.

Table 2 presents more detailed information on intraprovincial movements over this time. This table presents the number of individuals aged 5 years and over who moved between the Development Regions of B.C. between 1996 and 2001. Individuals

who moved *within* the same DR to a different Regional District are listed in the diagonal elements of the table.

Southern DRs sent a larger number of individuals to other Southern DR areas than to the North. Vancouver Is./Coast DR and Mainland/ Southwest DR also had a higher number of migrants move within their boundaries than to any other single DR. A total of 27,305 individuals moved between Regional Districts within Vancouver Island/ Coast DR and 39,185 individuals moved within Mainland/ Southwest DR regional districts. Intraprovincial migration movements for the southern area, therefore, are more focused within itself.

Table 2: BC Intra-provincial Migration Flows (Migrants Aged 5 Years and Older): Movements between Regional Districts 1996 - 2001. (Information Presented at the *Development Region*)

Origin Development	Destination Development Region : 2001 Residence								
	Southern Area				Northern Area				Total
	Vancouver	Mainland	Thompson	Kootenay	Cariboo	North	Ne-	North-	
Vancouver Is. / Coast	27,305	21,925	6,570	1,405	1,990	860	705	790	61,550
Mainland Southwest	23,005	39,185	23,665	4,310	4,950	1,160	1,120	1,350	98,745
Thompson - Okanagan	5,495	14,930	13,515	2,930	2,805	525	635	1,085	41,920
Kootenay	1,895	3,360	3,895	2,335	565	180	270	205	12,705
Cariboo	3,385	6,100	6,265	675	1,395	605	1,205	1,195	20,825
North Coast	2,130	2,855	1,925	350	1,415	1,175	655	275	10,780
Nechako	1,020	1,025	1,075	215	1,315	620	95	345	5,710
Northeast	635	1,305	1,370	500	1,105	215	250	390	5,770
Total Received	64,870	90,685	58,280	12,720	15,540	5,340	4,935	5,635	258,005

Data Source: Statistics Canada 2001 Census (Migrants Aged 5 Years and Older)

Note: Diagonal elements represent movements of individuals between Regional Districts that are *within* the same Development Region. (Number of Intra-Development Region Migrants)

Vancouver Island/Coast DR, Thompson-Okanagan DR and Kootenay DR had positive net intra-provincial migration between 1996 and 2001. More individuals moved to these areas from other parts of British Columbia than moved out. Mainland/Southwest DR experienced negative net intraprovincial migration. Thompson-Okanagan DR sent the highest number of intra-provincial migrants to the Mainland/Southwest DR.

Intraprovincial migration from the northern area shows large flows to areas in the south. However, the Cariboo DR in the North received a large inflow of intraprovincial migrants from other northern DRs. Cariboo DR and Northeast DR sent a majority of their intra-provincial emigrants to Thomp-

son-Okanagan DR while North Coast DR sent a high number of intra-provincial migrants to the Mainland/Southwest DR. Cariboo DR, North Coast DR, Nechako DR and Northeast DR all had more individuals move to other parts of the province than move in from areas within BC over this same period.

In terms of receiving intra-provincial migrants, Cariboo DR and the Northeast DR received high numbers of migrants from the Mainland/Southwest DR. North Coast DR received the highest number of intra-provincial migrants from areas within its boundaries, and Nechako DR received their highest number of intra-provincial migrants, 1,205 individuals, from Cariboo DR.

